

Statistical release

P0211

Quarterly Labour Force Survey

Quarter 4, 2011

Embargoed until:

**07 February 2012
11:30**

Enquiries:

User Information Services
Tel: (012) 310 8600/4892/8390

Forthcoming issue:

Quarter 1, 2012

Expected release date

May 2012

Published by Statistics South Africa, Private Bag X44, Pretoria 0001

© Statistics South Africa, 2012

Users may apply or process this data, provided Statistics South Africa (Stats SA) is acknowledged as the original source of the data; that it is specified that the application and/or analysis is the result of the user's independent processing of the data; and that neither the basic data nor any reprocessed version or application thereof may be sold or offered for sale in any form whatsoever without prior permission from Stats SA.

Stats SA Library Cataloguing-in-Publication (CIP) Data

Quarterly Labour Force Survey Quarter 4, 2011/Statistics South Africa. Pretoria: Statistics South Africa, 2012

Quarterly

1. Labour supply – Statistics
 2. Labour supply (South Africa)
 3. Unemployment (South Africa)
 4. Informal sector (Economics) – South Africa
 5. Formal sector (Economics) – South Africa
 - I. Statistics South Africa
 - II. Series
- (LCSH 16)

A complete set of Stats SA publications is available at Stats SA Library and the following libraries:

National Library of South Africa, Pretoria Division
National Library of South Africa, Cape Town Division
Library of Parliament, Cape Town
Bloemfontein Public Library
Natal Society Library, Pietermaritzburg
Johannesburg Public Library
Eastern Cape Library Services, King William's Town
Central Regional Library, Polokwane
Central Reference Library, Nelspruit
Central Reference Collection, Kimberley
Central Reference Library, Mmabatho

This publication is available both in hard copy and on the Stats SA website www.statssa.gov.za.

The data and metadata set from the Quarterly Labour Force Survey will be available on CD-ROM. A charge may be made according to the pricing policy, which can be accessed on the website.

Stats SA also provides a subscription service.

Enquiries:

	Printing and Distribution	User Information Services
Tel:	(012) 310 8251	(012) 310 8600
Fax:	(012) 321 7381	(012) 310 8500/ 8495
Email:	distribution@statssa.gov.za	info@statssa.gov.za

Contents

	Page
List of tables in highlights of the results	iii
List of figures in highlights of the results	iii
List of tables	iv
1. Introduction	vi
2. Highlights of the results	vi
3. Employment	vii
4. The unemployed population	xiii
5. Characteristics of the not economically active population	xvii
6. Technical notes	xviii
6.1. Response details	xviii
6.2. Survey requirements and design	xviii
6.3. Sample rotation	xviii
6.4. Weighting	xix
6.5. Non-response adjustment	xix
6.6. Final survey weights	xix
6.7. Estimation	xix
6.8. Reliability of the survey estimates	xix
7. Definitions	xx

List of tables in highlights of the results

	Page
Table A: Key labour market indicators	vi
Table B: Employment by industry	viii
Table C: Employment by province	iix
Table D: Employment by occupation	xii
Table E: Unemployed by sex	xv
Table F: Response rates by province	xviii

List of figures in highlights of the results

Figure 1: Total employment, quarter 1: 2008 to quarter 4: 2011	vii
Figure 2: Quarter-to-quarter change in employment, quarter 1: 2008 to quarter 4: 2011	vii
Figure 3 : Year-on-year change in employment, quarter 1: 2008 to quarter 4: 2011	vii
Figure 4: Changes in the formal sector employment by industry	ix
Figure 5: Quarter-to-quarter changes in the formal sector employment	xvii
Figure 6: Year-on-year changes in the formal sector employment	xvii
Figure 7: Changes in the informal sector employment by industry	xi
Figure 8: Quarter-to-quarter changes in the informal sector employment	xvii
Figure 9: Year-on-year changes in the informal sector employment	xvii
Figure 10: Employee access to selected leave benefits	xviii
Figure 11: Employee access to other benefits	xviii
Figure 12: Nature of employment contract or agreement	xvii
Figure 13: Total unemployment, quarter 1: 2008 to quarter 4: 2011	xvii
Figure 14: Changes in unemployed and discouraged work-seekers, quarter 1: 2008 to quarter 4: 2011 ..	xvii
Figure 15: Unemployment rate by sex	xvii
Figure 16: Unemployment rate by education level	xvii
Figure 17: Unemployment rate by province	xvi
Figure 18: Unemployment rate by population group	xvii
Figure 19: The not economically active	xvii

List of tables

	Page
Table 1: Population of working age (15–64 years)	1
Table 2: Labour force characteristics by sex – All population groups	2
Table 2: Labour force characteristics by sex – All population groups (concluded)	3
Table 2.1: Labour force characteristics by population group	4
Table 2.1: Labour force characteristics by population group (concluded)	5
Table 2.2: Labour force characteristics by province	6
Table 2.2: Labour force characteristics by province (continued)	7
Table 2.2: Labour force characteristics by province (continued)	8
Table 2.2: Labour force characteristics by province (concluded)	9
Table 2.2: Labour force characteristics by province (concluded)	10
Table 2.3: Labour force characteristics by province – Expanded definition of unemployment	11
Table 2.3: Labour force characteristics by province – Expanded definition of unemployment (continued) ..	12
Table 2.3: Labour force characteristics by province – Expanded definition of unemployment (concluded) ..	13
Table 2.3: Labour force characteristics by province – Expanded definition of unemployment (concluded) ..	14
Table 3.1: Employed by industry and sex – South Africa	15
Table 3.2: Employed by industry and province	16
Table 3.2: Employed by industry and province (continued)	17
Table 3.2: Employed by industry and province (concluded)	18
Table 3.2: Employed by industry and province (concluded)	19
Table 3.3: Employed by sector and industry – South Africa	20
Table 3.4: Employed by province and sector	21
Table 3.4: Employed by province and sector (concluded)	22
Table 3.5: Employed by sex and occupation – South Africa	23
Table 3.6: Employed by sex and status in employment – South Africa	24
Table 3.7: Employed by sex and usual hours of work – South Africa	25
Table 3.8: Conditions of employment – South Africa	26
Table 3.8: Conditions of employment – South Africa (continued)	27
Table 3.8: Conditions of employment – South Africa (continued)	28
Table 3.8: Conditions of employment – South Africa (continued)	29
Table 3.8: Conditions of employment – South Africa (continued)	30
Table 3.8: Conditions of employment – South Africa (concluded)	31
Table 3.9: Time-related underemployment – South Africa	32
Table 4: Characteristics of the unemployed – South Africa	33
Table 4: Characteristics of the unemployed – South Africa (concluded)	34
Table 5: Characteristics of the not economically active – South Africa	35
Table 6: Socio-demographic characteristics – South Africa	36
Table 6: Socio-demographic characteristics – South Africa (continued)	37
Table 6: Socio-demographic characteristics – South Africa (concluded)	38
Table 7: Involvement in non-market activities and labour market status by province	39
Table 7: Involvement in non-market activities and labour market status by province (continued)	40
Table 7: Involvement in non-market activities and labour market status by province (concluded)	41

Appendix 2A: Sampling variability for labour force characteristics by sex	42
Appendix 2A: Sampling variability for labour force characteristics by sex (concluded)	43
Appendix 2.1A: Sampling variability for labour force characteristics by population group	44
Appendix 2.1A: Sampling variability for labour force characteristics by population group (concluded)	45
Appendix 2.2A: Sampling variability for labour force characteristics by province	46
Appendix 2.2A: Sampling variability for labour force characteristics by province (continued)	47
Appendix 2.2A: Sampling variability for labour force characteristics by province (continued)	48
Appendix 2.2A: Sampling variability for labour force characteristics by province (continued)	49
Appendix 2.2A: Sampling variability for labour force characteristics by province (concluded)	50
Appendix 3.1A: Sampling variability for the employed by industry and sex	51
Appendix 3.4A: Sampling variability for the employed by province and sector	52
Appendix 3.4A: Sampling variability for the employed by province and sector (concluded)	53
Appendix 3.5A: Sampling variability for the employed by sex and occupation	54
Appendix 2B: Sampling variability for labour force characteristics by sex	55
Appendix 2B: Sampling variability for labour force characteristics by sex (concluded)	56
Appendix 2.1B: Sampling variability for labour force characteristics by population group	57
Appendix 2.1B: Sampling variability for labour force characteristics by population group (concluded)	58
Appendix 2.2B: Sampling variability for labour force characteristics by province	59
Appendix 2.2B: Sampling variability for labour force characteristics by province (continued)	60
Appendix 2.2B: Sampling variability for labour force characteristics by province (continued)	61
Appendix 2.2B: Sampling variability for labour force characteristics by province (continued)	62
Appendix 2.2B: Sampling variability for labour force characteristics by province (concluded)	63
Appendix 3.1B: Sampling variability for the employed by industry and sex	64
Appendix 3.4B: Sampling variability for the employed by province and sector	65
Appendix 3.4B: Sampling variability for the employed by province and sector	66
Appendix 3.5B: Sampling variability for the employed by sex and occupation	67

1. Introduction

The Quarterly Labour Force Survey (QLFS) is a household-based sample survey conducted by Statistics South Africa (Stats SA). It collects data on the labour market activities of individuals aged 15 years and above who live in South Africa. However, this report only covers labour market activities of persons aged 15 to 64 years.

This report presents the key findings of the QLFS conducted from October to December, 2011 (Q4:2011).

2. Highlights of the results

Table A: Key labour market indicators

	Oct–Dec 2010	Jul–Sep 2011	Oct–Dec 2011	Qtr-to- qtr change	Year-on- year change	Qtr-to- qtr change	Year-on- year change
	Thousand					Per cent	
Population 15–64 yrs	32 193	32 555	32 670	115	477	0,4	1,5
Labour force	17 269	17 761	17 741	-20	472	-0,1	2,7
Employed	13 132	13 318	13 497	179	365	1,3	2,8
Formal sector (non-agricultural)	9 163	9 436	9 616	180	453	1,9	4,9
Informal sector (non-agricultural)	2 225	2 160	2 134	-26	-91	-1,2	-4,1
Agriculture	627	624	630	6	3	1,0	0,5
Private households	1 117	1 098	1 118	20	1	1,8	0,1
Unemployed	4 137	4 442	4 244	-198	107	-4,5	2,6
Not economically active	14 924	14 795	14 929	134	5	0,9	0,0
Discouraged work-seekers	2 150	2 204	2 315	111	165	5,0	7,7
Other (not economically active)	12 774	12 591	12 614	23	-160	0,2	-1,3
Rates (%)							
Unemployment rate	24,0	25,0	23,9	-1,1	-0,1		
Employed/population ratio (absorption)	40,8	40,9	41,3	0,4	0,5		
Labour force participation rate	53,6	54,6	54,3	-0,3	0,7		

Due to rounding, numbers do not necessarily add up to totals.

The number of persons in the labour force decreased by 20 000 between Q3:2011 and Q4:2011. Table A shows that employment increased by 179 000 in Q4:2011 and the number of unemployed persons decreased by 198 000. The number of the not economically active population increased by 134 000, of which 111 000 were discouraged work-seekers. This resulted in the unemployment rate decreasing by 1,1 percentage points to 23,9%.

Formal sector employment increased by 180 000 jobs while informal sector employment decreased by 26 000 jobs. Employment in Private households rose by 20 000 and Agriculture remained virtually unchanged (up by 6 000) in Q4:2011.

Compared to a year ago, employment increased by 2,8% (365 000), unemployment increased by 2,6% (107 000), the number of discouraged work-seekers increased by 7,7% (165 000) and other (not economically active) decreased by 1,3% (160 000) resulting in a net increase of 5 000 among the not economically active as a whole.

3. Employment

Figure 1: Total employment, quarter 1: 2008 to quarter 4: 2011

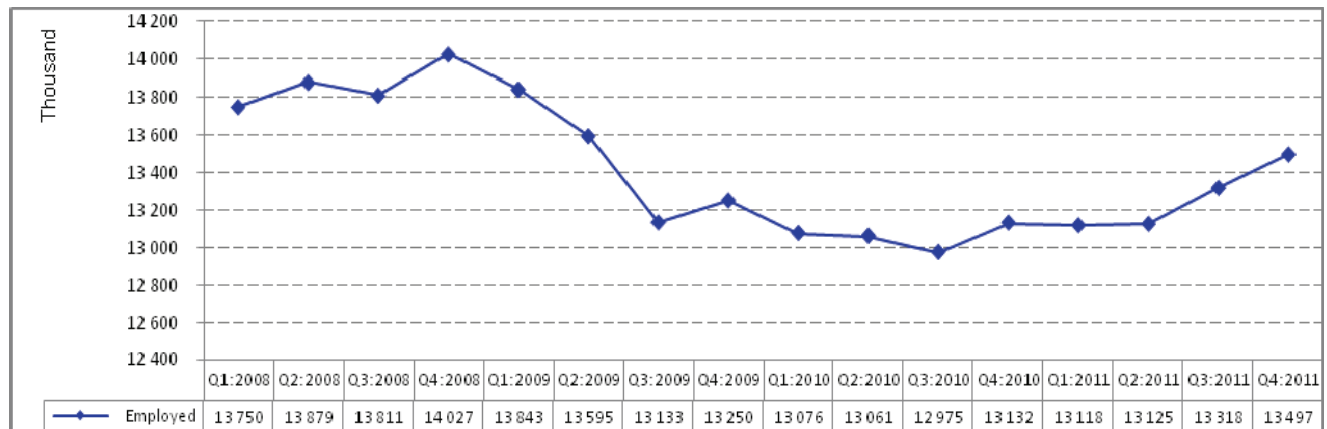


Figure 1 above shows that, since 2008, the rate of job creation was highest in the fourth quarter of each year. Employment remained at almost the same level in the three quarters to Q2:2011, after which employment has been on the rise.

Figure 2: Quarter-to-quarter change in employment, quarter 1: 2008 to quarter 4: 2011

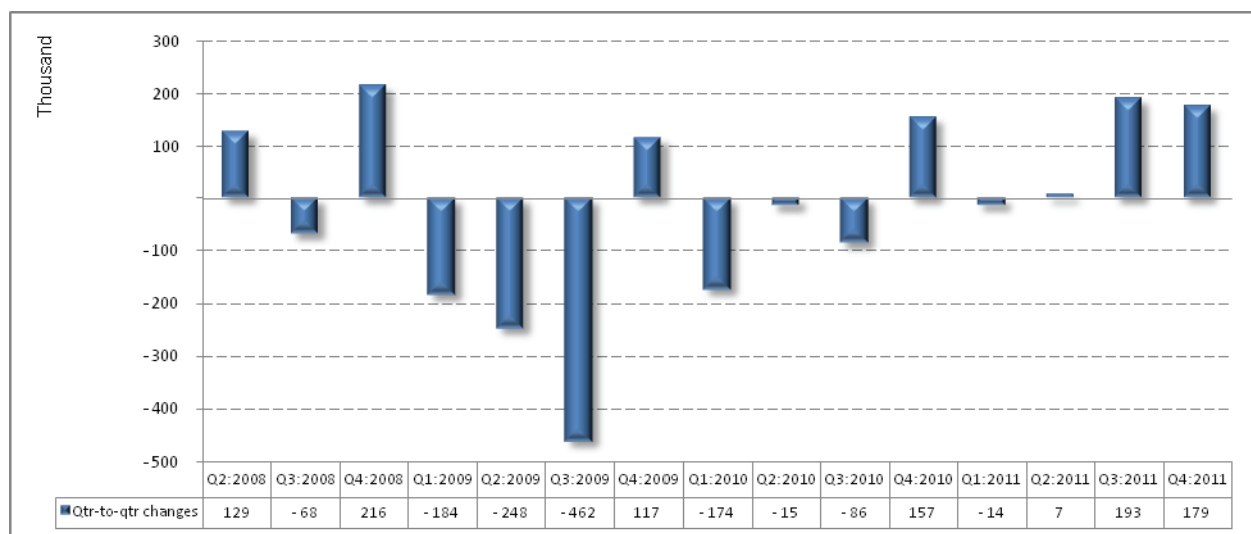
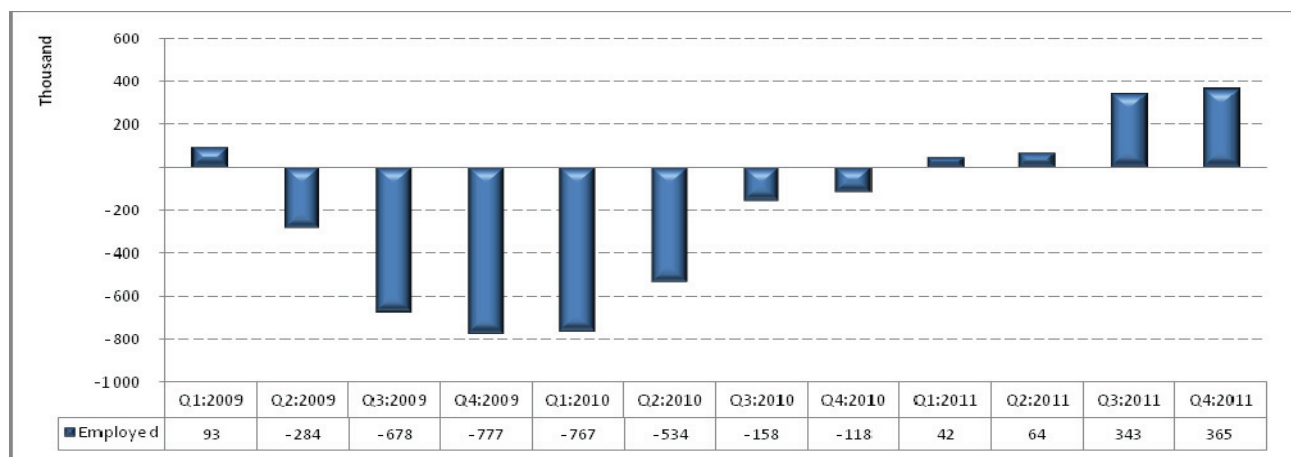


Figure 2 shows that after two successive quarters of virtually no change in employment, growth was observed in Q3:2011 and Q4:2011.

Figure 3: Year-on-year change in employment, quarter 1: 2008 to quarter 4: 2011

Q4:2011 recorded 365 000 more jobs than Q4:2010. This is the fourth successive growth observed year-on-year and the highest since the end of the recession.

Table B: Employment by industry

	Oct-Dec 2010	Jul-Sep 2011	Oct-Dec 2011	Qtr-to-qtr change	Year-on-year change	Qtr-to-qtr change	Year-on-year change
Industry	Thousand					Per cent	
Total	13 132	13 318	13 497	179	365	1,3	2,8
Agriculture	627	624	630	6	3	1,0	0,5
Mining [#]	298	324	327	3	29	0,9	9,7
Manufacturing	1 783	1 737	1 789	52	6	3,0	0,3
Utilities	94	73	81	8	-13	11,0	-13,8
Construction	1 056	1 086	1 057	-29	1	-2,7	0,1
Trade	2 975	3 012	3 060	48	85	1,6	2,9
Transport	761	756	788	32	27	4,2	3,5
Finance and other business services	1 594	1 768	1 739	-29	145	-1,6	9,1
Community and social services	2 826	2 836	2 902	66	76	2,3	2,7
Private households	1 117	1 098	1 118	20	1	1,8	0,1

Note: Total includes other industry.

[#]Mining is a very clustered industry, hence the industry might not have been adequately captured by the QLFS sample.

For more robust mining estimates please use the Quarterly Employment Statistics (QES).

*Due to rounding, numbers do not necessarily add up to totals.

Table B indicates that between Q3:2011 and Q4:2011, there were noticeable employment gains in the Community and social services (66 000), Manufacturing (52 000) and Trade (48 000) industries, while there were declines in Construction (29 000) and Finance and other business services (29 000).

Year-on-year comparisons show a net increase of 365 000 jobs, with Finance and other business services (145 000), Trade (85 000) and Community and social services (76 000) being the main contributors. Utilities is the only industry that lost jobs in Q4:2011 compared to Q4:2010.

Table C: Employment by province

	Oct-Dec 2010	Jul-Sep 2011	Oct-Dec 2011	Qtr-to-qtr change	Year-on- year change	Qtr-to-qtr change	Year-on- year change
Province	Thousand					Per cent	
South Africa	13 132	13 318	13 497	179	365	1,3	2,8
Western Cape	1 772	1 806	1 842	36	70	2,0	4,0
Eastern Cape	1 328	1 298	1 326	28	-2	2,2	-0,2
Northern Cape	278	278	291	13	13	4,7	4,7
Free State	785	826	753	-73	-32	-8,8	-4,1
KwaZulu-Natal	2 439	2 510	2 562	52	123	2,1	5,0
North West	740	680	700	20	-40	2,9	-5,4
Gauteng	3 953	3 983	4 115	132	162	3,3	4,1
Mpumalanga	876	911	923	12	47	1,3	5,4
Limpopo	962	1 026	985	-41	23	-4,0	2,4

*Due to rounding, numbers do not necessarily add up to totals.

Table C shows that between Q3:2011 and Q4:2011, employment increased in seven of the nine provinces, with the highest increases observed in Gauteng (132 000), followed by KwaZulu-Natal (52 000) and Western Cape (36 000). There were noticeable job losses in Free State (73 000) and Limpopo (41 000), in the same period.

Compared to a year ago, employment increased in six of the nine provinces and decreased in North West and Free State by 40 000 and 32 000 respectively, while there was virtually no change in employment in Eastern Cape (down by 2 000).

Figure 4: Changes in the formal sector employment by industry

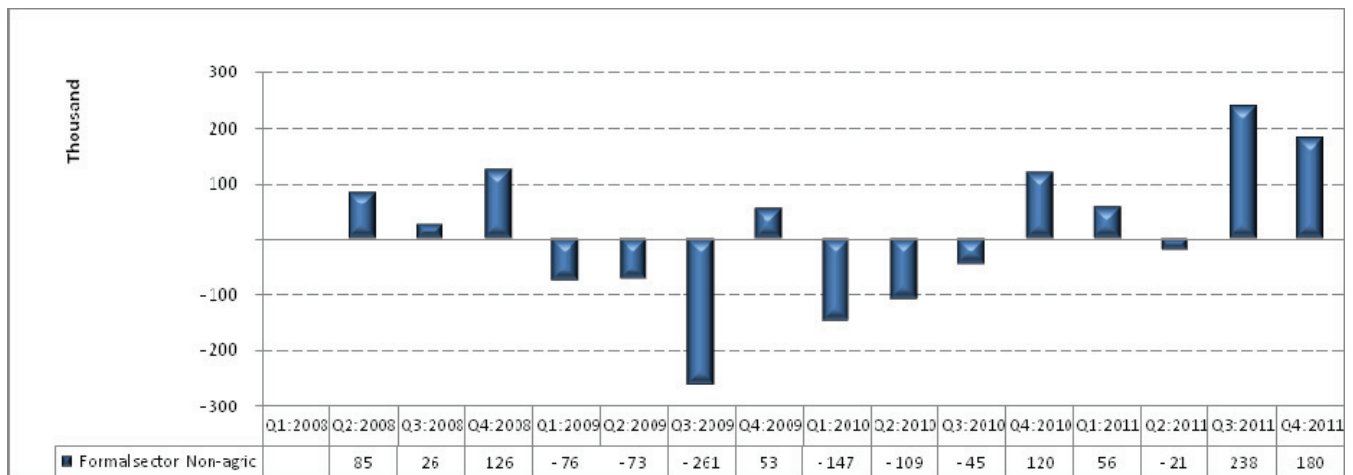


#Mining is a very clustered industry, hence the industry might not have been adequately captured by the QLFS sample. For more robust mining estimates please use the Quarterly Employment Statistics (QES)

Figure 4 shows that between Q3:2011 and Q4:2011 most of the formal sector job gains were in the Trade (85 000), Community and social services (63 000) and Manufacturing (59 000) industries. Job losses were observed only in the Construction and Finance industries in the same period by 46 000 and 20 000 respectively.

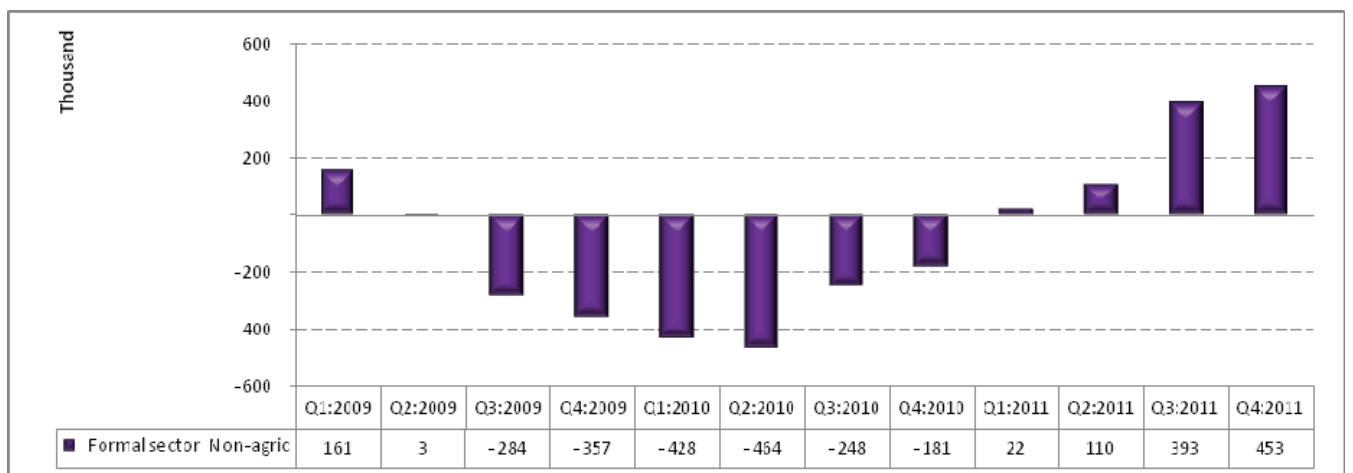
Year-on-year comparisons show employment gains in all industries except Utilities. Most job gains were recorded in the Finance and other business services (146 000), Trade (137 000) and Community and social services (93 000) industries.

Figure 5: Quarter-to-quarter changes in the formal sector employment

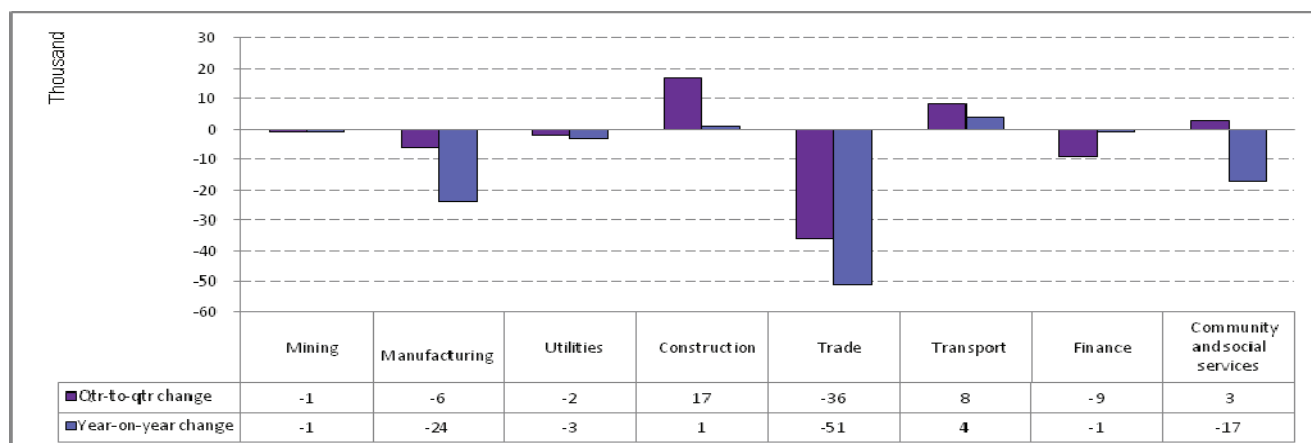


After creating 238 000 jobs in Q3: 2011, the formal sector continued to create more jobs (180 000) in Q4:2011 (Figure 5).

Figure 6: Year-on-year changes in the formal sector employment



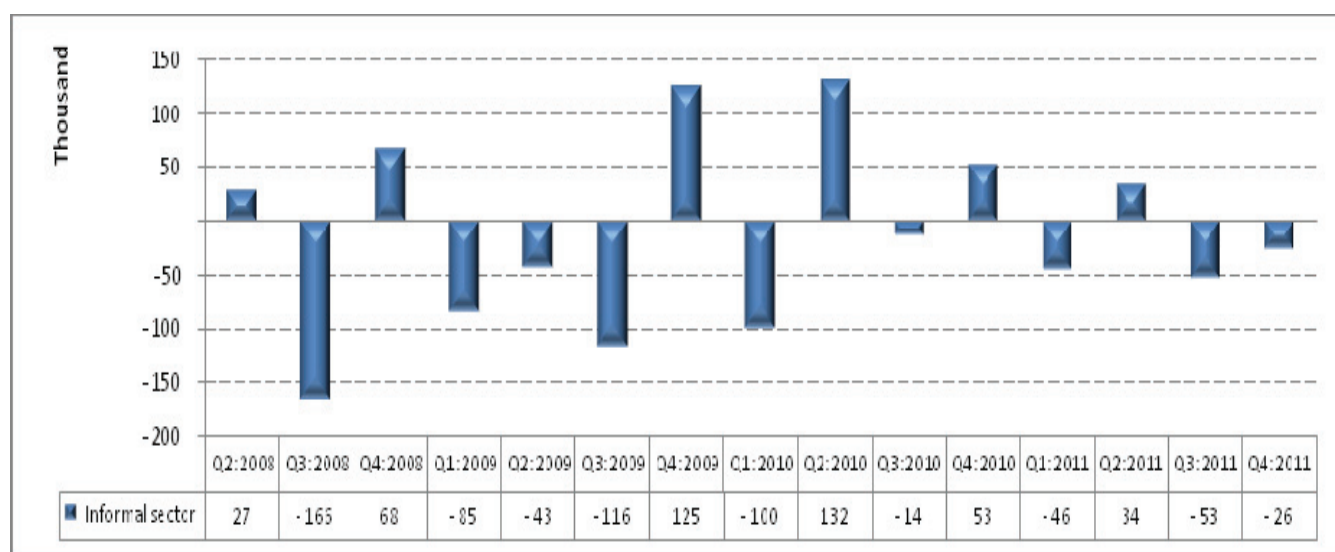
Compared to a year ago, the number of employed persons in the formal sector increased by 453 000 in Q4:2011. This is the highest year-on-year growth observed in the formal sector since the end of the recession.

Figure 7: Changes in the informal sector employment by industry

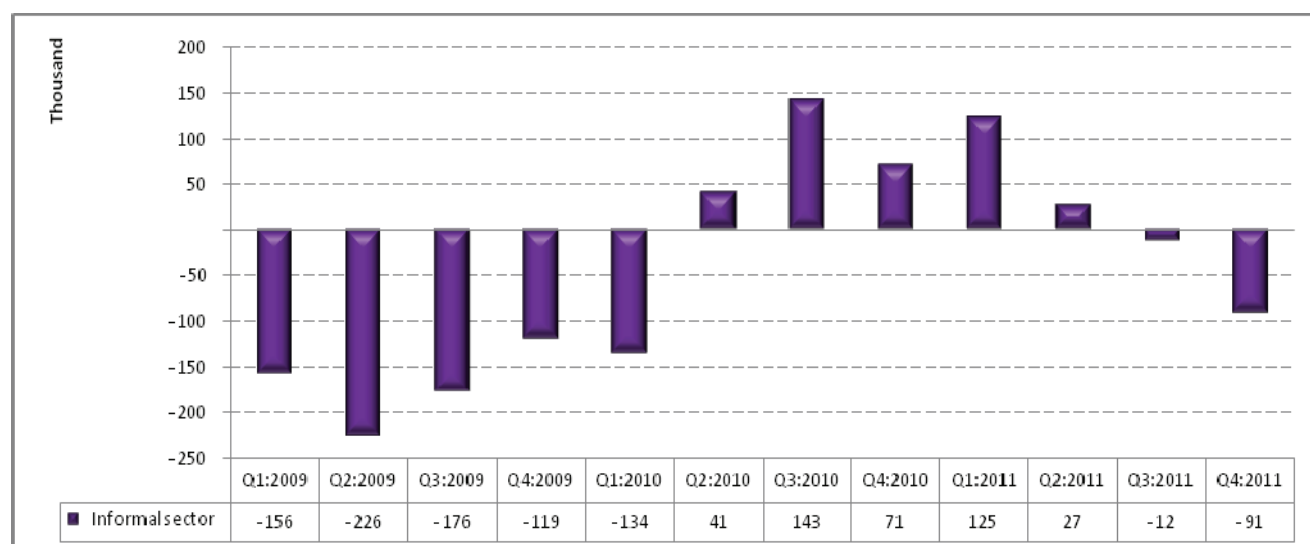
*Mining is a very clustered industry, hence the industry might not have been adequately captured by the QLFS sample. For more robust mining estimates please use the Quarterly Employment Statistics (QES)

Informal sector employment contracted by 26 000 jobs between Q3:2011 and Q4:2011. Figure 7 indicates that most informal sector jobs were lost in Trade (36 000) and Finance and other business services (9 000) in this period. However, informal sector employment increased in the Construction (17 000) and Transport (8 000) industries between the two quarters.

Compared to Q4:2010, the informal sector lost 91 000 jobs in Q4:2011 with most of them being in Trade (51 000), Manufacturing (24 000) and Community and social services (17 000).

Figure 8: Quarter-to-quarter changes in the informal sector employment

The informal sector remains turbulent quarter-to-quarter with two successive declines in Q3:2011 and Q4:2011 after an increase in Q2:2011 (Figure 8).

Figure 9: Year-on-year changes in the informal sector employment

Year-on-year comparisons show that the informal sector contracted in Q3:2011 and Q4:2011 after five successive quarters of year-on-year growth.

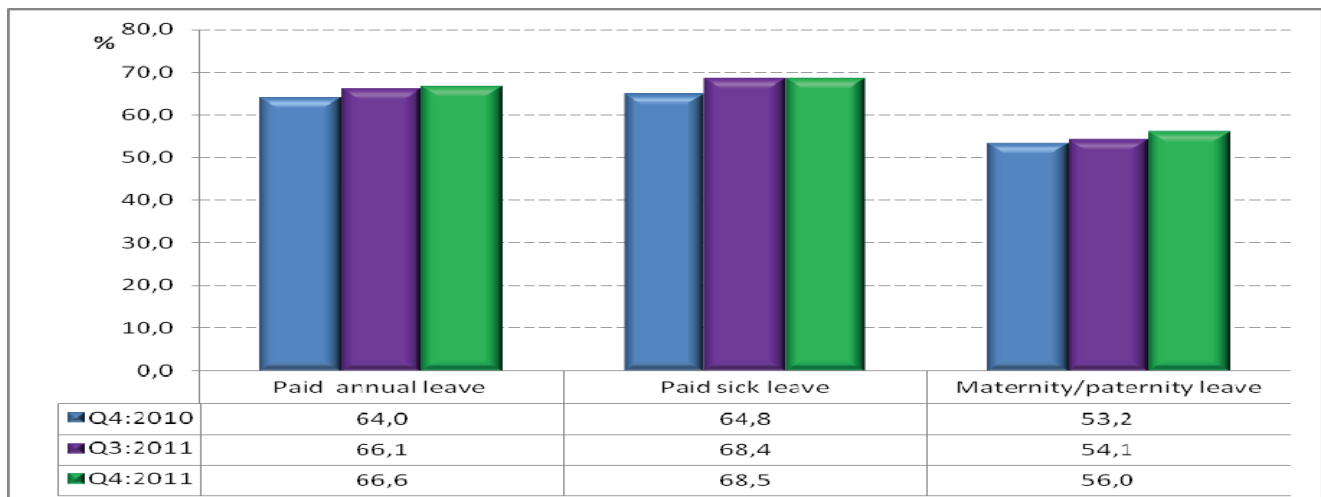
Table D: Employment by occupation

	Oct-Dec 2010	Jul-Sep 2011	Oct-Dec 2011	Qtr-to-qtr change	Year-on-year change	Qtr-to-qtr change	Year-on-year change
Occupation	Thousand				Per cent		
Total	13 132	13 318	13 497	179	365	1,3	2,8
Manager	1 124	1 130	1 130	0	6	0,0	0,5
Professional	762	763	745	-18	-17	-2,4	-2,2
Technician	1 469	1 440	1 498	58	29	4,0	2,0
Clerk	1 434	1 426	1 523	97	89	6,8	6,2
Sales and services	1 882	1 975	1 960	-15	78	-0,8	4,1
Skilled agriculture	73	61	67	6	-6	9,8	-8,2
Craft and related trade	1 566	1 655	1 637	-18	71	-1,1	4,5
Plant and machine operator	1 125	1 097	1 126	29	1	2,6	0,1
Elementary	2 829	2 894	2 933	39	104	1,3	3,7
Domestic worker	869	878	878	0	9	0,0	1,0

*Due to rounding, numbers do not necessarily add up to totals.

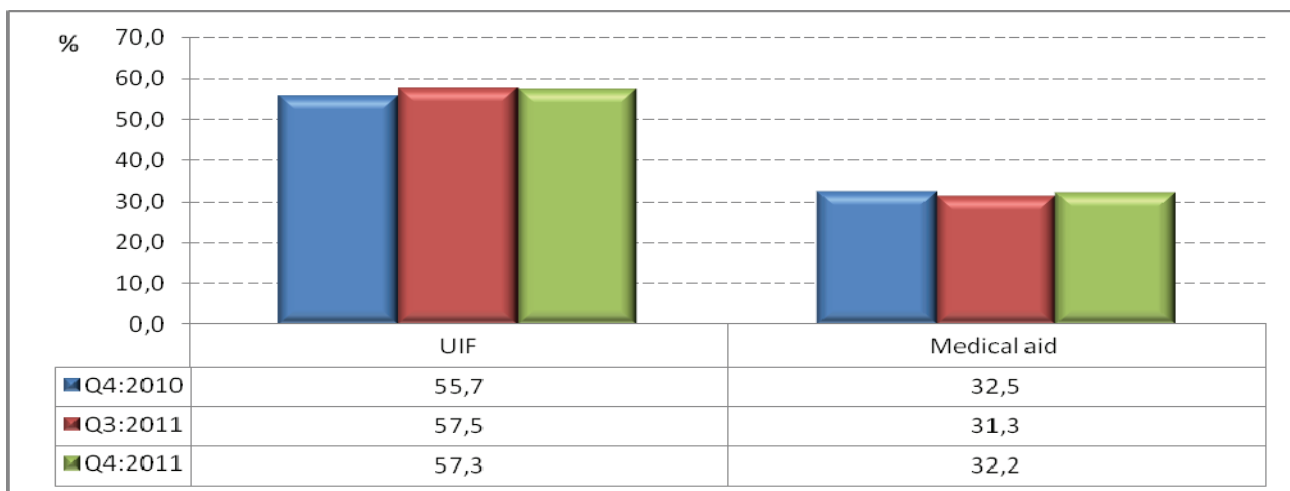
Between Q3:2011 and Q4:2011, the biggest increase in employment was observed in the Clerical occupations where it increased by 97 000, followed by Technician (58 000) and Elementary (39 000) occupations. The biggest job losses were observed among the Craft and related trade (18 000), Professional (18 000) and Sales and services (15 000) occupations.

Year-on-year comparisons show that most of the jobs created were in Elementary (104 000), Clerical (89 000), Sales and services (78 000) and Craft and related trade (71 000) occupations. Employment declined in the Professional (17 000) and Skilled agriculture (6 000) occupations.

Figure 10: Employee access to selected leave benefits

Paid sick leave benefit was the most available benefit offered by employers, with paid sick leave available to 68,5% of employees in Q4:2011. This was no different from the previous quarter. Between Q3:2011 and Q4:2011 the proportion of employees with paid annual leave increased slightly by 0,5 of a percentage point; while the maternity/paternity leave benefit increased by 1,9 percentage points in the same period.

Compared to the same quarter in 2010, the proportion of employees with paid annual leave benefits increased by 2,6 percentage points; there was a 3,7 percentage points increase in the proportion of employees with paid sick leave and an increase of 2,8 percentage points for the maternity/paternity leave benefit.

Figure 11: Employee access to other benefits

According to Figure 11, over 55% of employees indicated that their employers paid Unemployment Insurance Fund (UIF) contributions for them and just over 30% of the employees were entitled to medical aid benefits from their employers.

Between Q3:2011 and Q4:2011 there was virtually no change in the proportion of employees for whom the employers paid UIF, but there was an increase of 0,9 of a percentage point in the medical aid benefit. However, compared to a year ago there was an improvement in the proportion of employees whose employers paid UIF for them while the medical aid benefit decreased slightly by 0,3 of a percentage point.

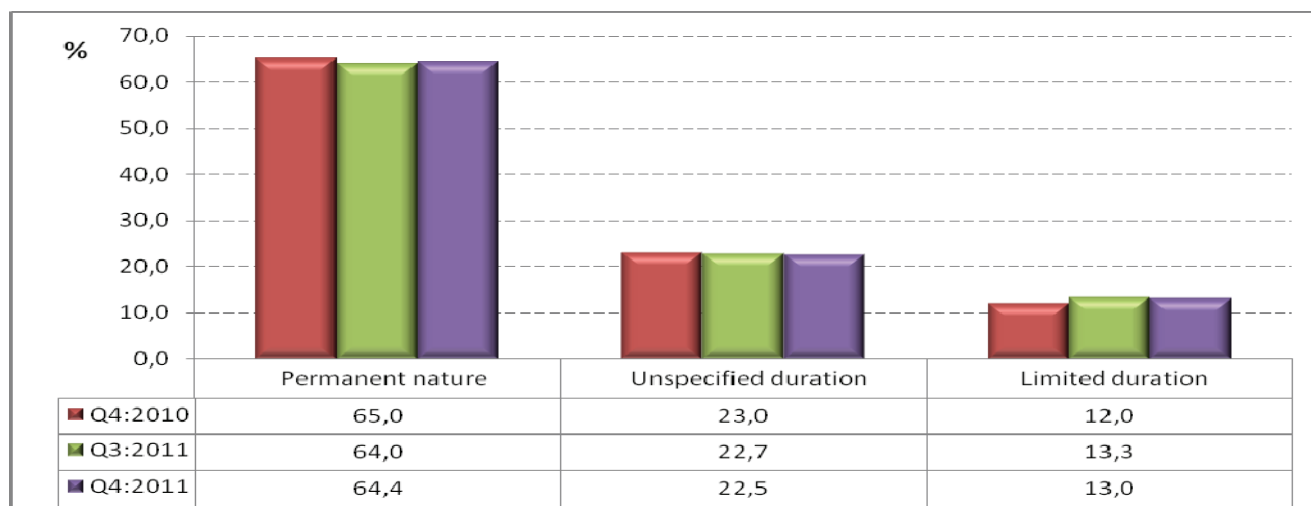
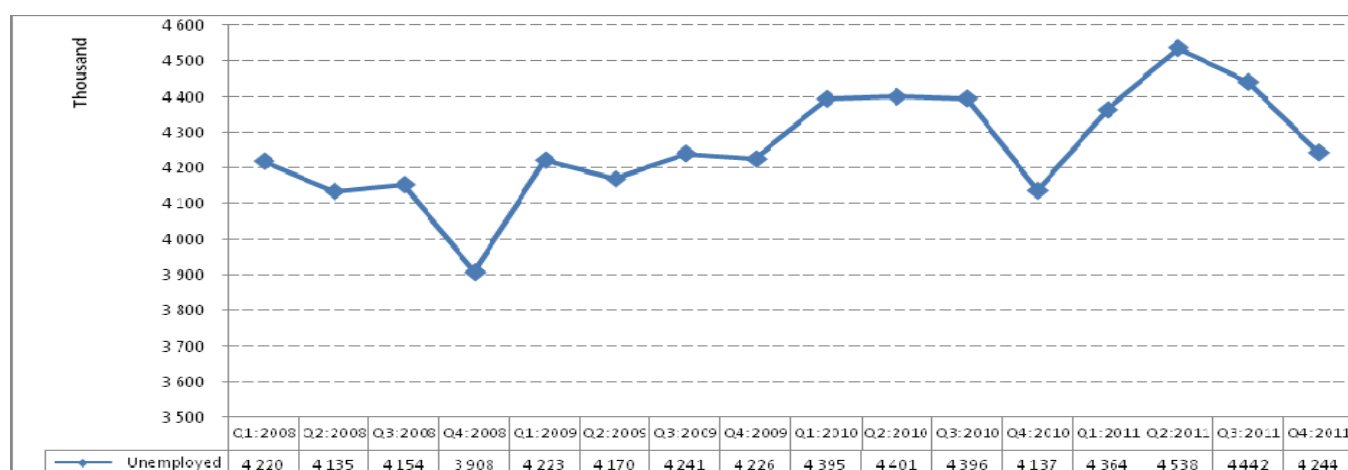
Figure 12: Nature of employment contract or agreement

Figure 12 indicates that just over 64% of employees had a permanent contract/agreement with their employer, while 13,0% had a contract of limited duration in Q4:2011.

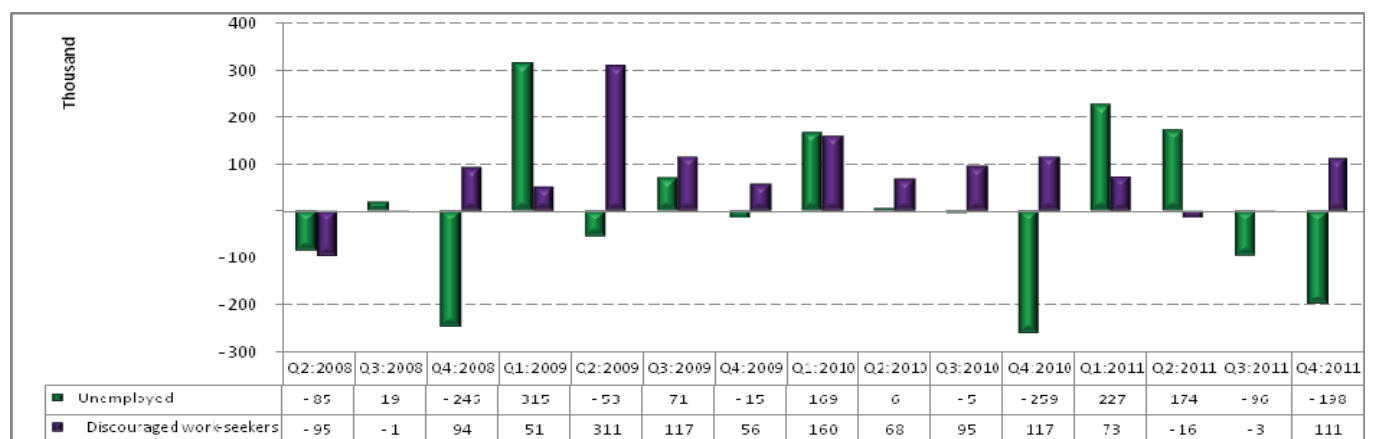
Compared to Q3:2011, there was virtually no change in the proportion of employees whose contracts were of a permanent nature (a slight increase of 0,4 of a percentage point) or of a limited duration (a slight decrease of 0,3 of a percentage point).

The year-on-year comparisons show that the proportion of those with permanent contracts decreased by 0,6 of a percentage point and the proportion of those whose contracts were of a limited duration increased by 1,0 percentage point.

4. The unemployed population

Figure 13: Total unemployment, quarter 1: 2008 to quarter 4: 2011

In Q4:2008, there were approximately 3,9 million persons unemployed in South Africa. In the wake of the financial and economic crisis, the level of unemployment climbed rapidly, increasing by 318 000 to 4,2 million unemployed persons between Q4:2008 and Q4:2009. This figure decreased by 89 000 to 4,1 million unemployed persons in the year ended December 2010. Compared to Q4:2010, there were 107 000 more unemployed persons in Q4:2011.

Figure 14: Changes in unemployed and discouraged work-seekers, quarter 1: 2008 to quarter 4: 2011

This is the second successive quarter in which a decline in unemployment levels is observed; however, this was accompanied by an increase in discouragement as it has always been the case every 4th quarter of each year.

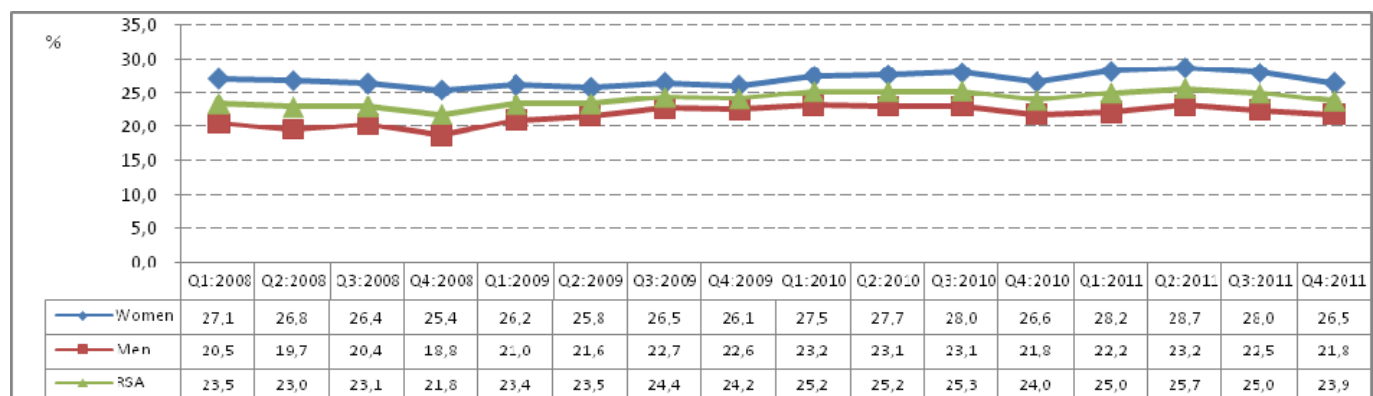
Table E: The unemployed by sex

	Oct-Dec 2010	Jul-Sep 2011	Oct-Dec 2011	Qtr-to-qtr change	Year-on-year change	Qtr-to-qtr change	Year-on-year change
Unemployed	Thousand					Per cent	
Total	4 137	4 442	4 244	-198	107	-4,5	2,6
Women	2 064	2 257	2 129	-128	65	-5,7	3,1
Men	2 073	2 186	2 115	-71	42	-3,2	2,0

*Due to rounding, numbers do not necessarily add up to totals.

The number of unemployed men and women decreased by 71 000 and 128 000 respectively. This resulted in an overall decrease of 198 000 in the number of unemployed persons in Q4:2011 compared to Q3:2011.

Year-on-year comparisons show that the number of unemployed persons increased by 107 000. The number of unemployed women increased by 65 000, while unemployment among men decreased by 42 000 between Q4:2010 and Q4:2011.

Figure 15: Unemployment rate by sex

The pattern of higher unemployment rate among women than among men is maintained. However, the gap has narrowed over the years. For instance, the unemployment rate for women was 25,4% in Q4:2008, while the rate for men was 6,6 percentage points lower. By Q4:2011 the gender gap had narrowed to 4,7 percentage points.

Figure 16: Unemployment rate by education level

In general, lower unemployment rates are associated with higher levels of education. From Q1:2008 the unemployment rate for persons without matric was higher than for those with matric or higher education level. Figure 16 shows that 60,6% of the unemployed persons did not have matric in Q4:2011.

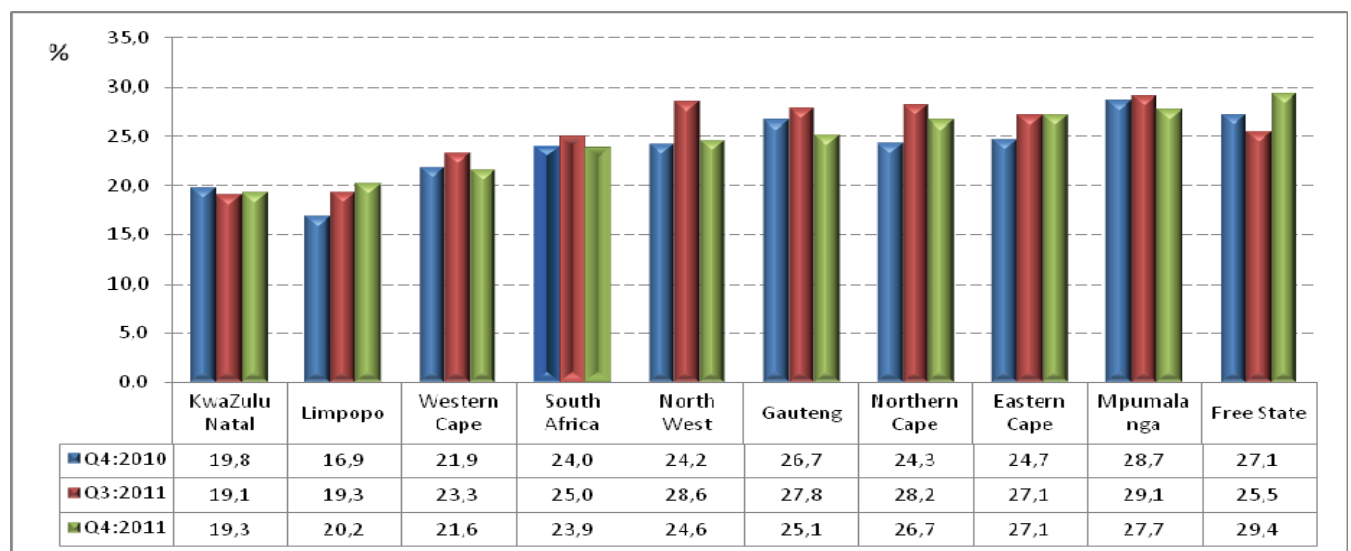
Figure 17: Unemployment rate by province

Figure 17 shows a decrease in the unemployment rate in five of the nine provinces in Q4:2011 compared to Q3:2011. The biggest decrease in the unemployment rate was observed in North West (4,0 percentage points), Gauteng (2,7 percentage points) and Western Cape (1,7 percentage points). The biggest increase in the unemployment rate was recorded in Free State (3,9 percentage points) in the same period.

The year-on-year comparisons indicate that there was virtually no change in the unemployment rate between Q4:2010 and Q4:2011 at the national level. However, at the provincial level there were some changes - the unemployment rate decreased in Gauteng (down by 1,6 percentage points) and Mpumalanga (down by 1,0 percentage point) and increased in Limpopo, Northern Cape, Eastern Cape and Free state (up by 3,3, 2,4, 2,4 and 2,3 percentage points respectively).

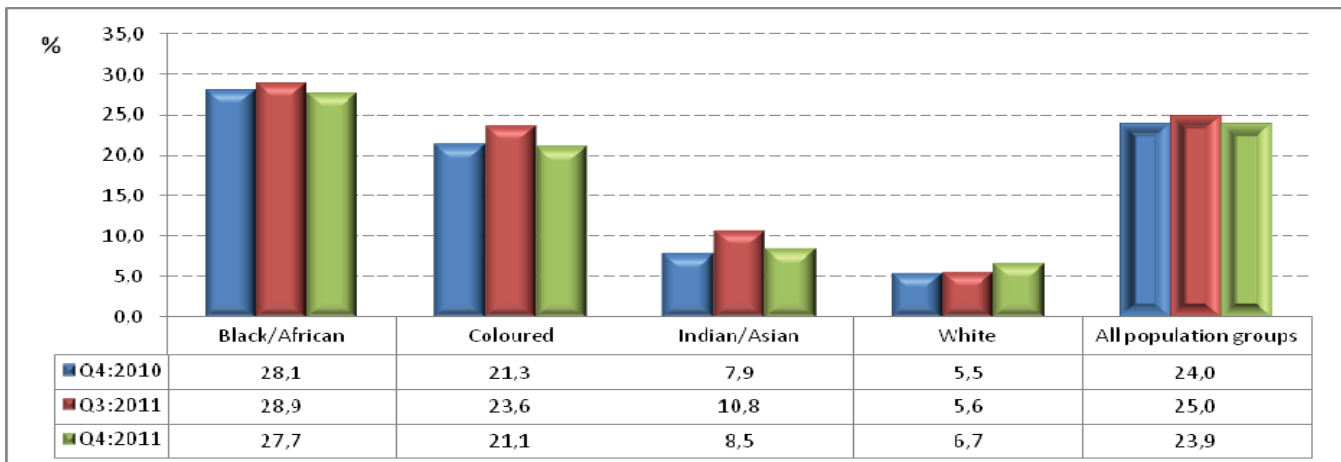
Figure 18: Unemployment rate by population group

Figure 18 shows that between Q3:2011 and Q4:2011, the unemployment rate decreased among the coloured population (2,5 percentage points), Indian/Asian population (2,3 percentage points) and black Africans (1,2 percentage points) while it increased among the white population (1,1 percentage points).

The year-on-year comparisons show a decrease in the unemployment rate among the black African and coloured populations, while it increased among the white and Indian/Asian populations.

5. Characteristics of the not economically active population

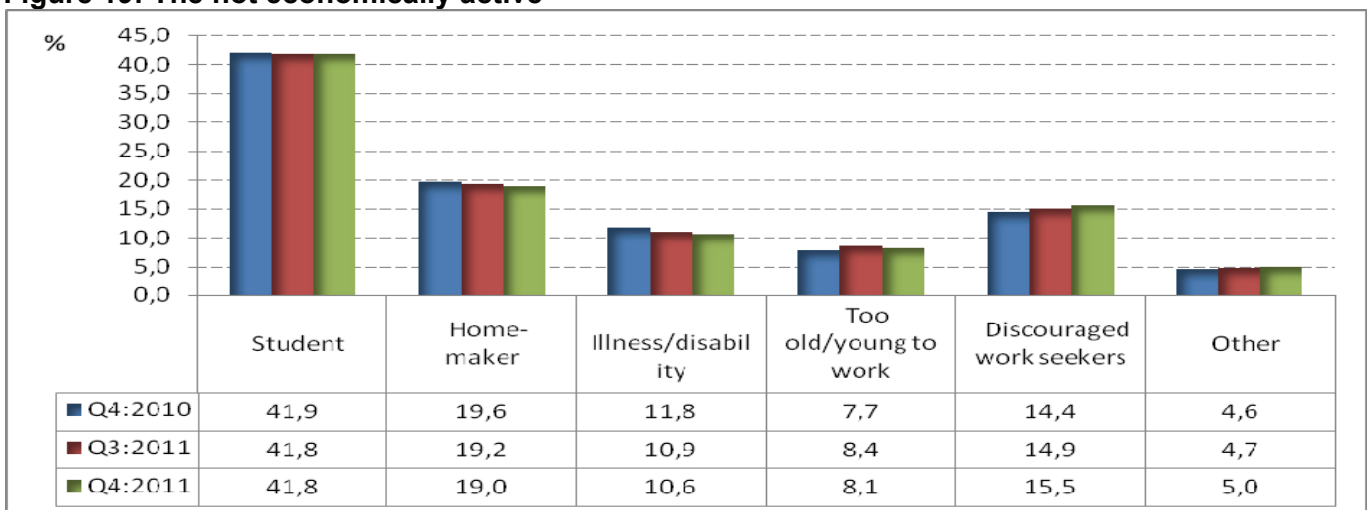
Figure 19: The not economically active

Figure 19 shows that in Q4:2011, students accounted for the biggest share of the not economically active population, while discouraged work-seekers accounted for 15,5% of the not economically active (0,6 of a percentage point higher than in the previous quarter).

Compared to a year ago (Q4:2010), the share of students among the not economically active remained virtually unchanged; while discouraged work-seekers increased by 1,1 percentage points.

PJ Lehohla
Statistician-General

6. Technical notes

6.1. Response details

Table F: Response rates by province

Province	Oct–Dec 2011
	Per cent
Western Cape	86,9
Eastern Cape	99,2
Northern Cape	92,6
Free State	97,6
KwaZulu-Natal	98,1
North West	95,7
Gauteng	87,8
Mpumalanga	97,1
Limpopo	99,2
South Africa	94,5

6.2. Survey requirements and design

The Quarterly Labour Force Survey (QLFS) frame has been developed as a general-purpose household survey frame that can be used by all other household surveys irrespective of the sample size requirement of the survey. The sample size for the QLFS is roughly 30 000 dwellings per quarter.

The sample is based on information collected during the 2001 Population Census conducted by Stats SA. In preparation for the 2001 Census, the country was divided into 80 787 enumeration areas (EAs). Stats SA's household-based surveys use a master sample of primary sampling units (PSUs) which comprises EAs that are drawn from across the country.

The sample is designed to be representative at provincial level and within provinces at metro/non-metro level. Within the metros, the sample is further distributed by geography type. The four geography types are: urban formal, urban informal, farms and tribal. This implies, for example, that within a metropolitan area the sample is representative at the different geography types that may exist within that metro.

The current sample size is 3 080 PSUs. It is divided equally into four subgroups or panels called rotation groups. The rotation groups are designed in such a way that each of these groups has the same distribution pattern as that which is observed in the whole sample. They are numbered from one to four and these numbers also correspond to the quarters of the year in which the sample will be rotated for the particular group.

The sample for the redesigned Labour Force Survey (i.e. the QLFS) is based on a stratified two-stage design with probability proportional to size (PPS) sampling of PSUs in the first stage, and sampling of dwelling units (DUs) with systematic sampling in the second stage.

6.3. Sample rotation

Each quarter, a ¼ of the sampled dwellings rotate out of the sample and are replaced by new dwellings from the same PSU or the next PSU on the list. Thus, sampled dwellings will remain in the sample for four consecutive quarters. It should be noted that the sampling unit is the dwelling, and the unit of observation is the household. Therefore, if a household moves out of a dwelling after being in the sample for, say two quarters, and a new household moves in, the new household will be enumerated for the next two quarters. If no household moves into the sampled dwelling, the dwelling will be classified as vacant (unoccupied).

6.4. Weighting

The sampling weights for the data collected from the sampled households are constructed in such a manner that the responses could be properly expanded to represent the entire civilian population of South Africa. The weights are the result of calculations involving several factors, including original selection probabilities, adjustment for non-response, and benchmarking to known population estimates from the Demographic division of Stats SA.

6.5. Non-response adjustment

In general, imputation is used for item non-response (i.e. blanks within the questionnaire) and edits failure (i.e. invalid or inconsistent responses). The eligible households in the sampled dwellings can be divided into two response categories: respondents and non-respondents; and weight adjustment is applied to account for the non-respondent households (e.g. refusal, no contact, etc.).

6.6. Final survey weights

The final survey weights are constructed using regression estimation to calibrate to the known population counts at the national level population estimates (which are supplied by the Demography division) cross-classified by 5-year age groups, gender and race, and provincial population estimates by broad age groups. The 5-year age groups are: 0–4, 5–9, 10–14, etc., and 65 years and over. The provincial-level age groups are: 0–14, 15–34, 35–64, and 65 years and over. The calibrated weights are constructed such that all persons in a household would have the same final weight.

6.7. Estimation

The final survey weights are used to obtain the estimates for various domains of interest, e.g. number of persons employed in agriculture in Western Cape, number of females employed in manufacturing, etc.

6.8. Reliability of the survey estimates

Because estimates are based on sample data, they differ from figures that would have been obtained from complete enumeration of the population using the same instrument. Results are subject to both sampling and non-sampling errors. Non-sampling errors include biases from inaccurate reporting, processing, and tabulation, etc., as well as errors from non-response and incomplete reporting. These types of errors cannot be measured readily. However, to the extent possible, non-sampling errors can be minimised through the procedures used for data collection, editing, quality control, and non-response adjustment. The variances of the survey estimates are used to measure sampling errors. The variance estimation methodology is discussed below.

(i) Variance estimation

The most commonly used methods for estimating variances of survey estimates from complex surveys such as the QLFS, are the Taylor-series Linearization, Jackknife Replication, Balanced Repeated Replication (BRR), and Bootstrap methods (Wolter, 2007)¹. The Fay's BRR method has been used for variance estimation in the QLFS because of its simplicity.

(ii) Coefficient of variation

It is more useful in many situations to assess the size of the standard error relative to the magnitude of the characteristic being measured (the standard error is defined as the square root of the variance). The **coefficient of variation** (cv) provides such a measure. It is the **ratio of the standard error of the survey estimate to the value of the estimate itself expressed as a percentage**. It is very useful in comparing the precision of several different survey estimates, where their sizes or scale differ from one another.

(iii) P-value of an estimate of change

The p-value corresponding to an estimate of change is the probability of observing a value larger than the particular observed value under the hypothesis that there is no real change. If p-value < 0,01, the difference is highly significant; if p-value is between 0,01 and 0,05, the difference is significant; and if p-value > 0,05, the difference is not significant.

¹ Wolter KM, 2007. *Introduction to Variance Estimation*, 2nd Edition. New York: Springer-Verlag.

7. Definitions

Discouraged work-seeker is a person who was not employed during the reference period, wanted to work, was available to work/start a business but did not take active steps to find work during the last four weeks, provided that the main reason given for not seeking work was any of the following: no jobs available in the area; unable to find work requiring his/her skills; lost hope of finding any kind of work.

Economic activities are those that contribute to the production of goods and services in the country. There are two types of economic activities, and they are: (1) Market production activities (work done for others and usually associated with pay or profit); and (2) Non-market production activities (work done for the benefit of the household, e.g. subsistence farming).

Employed persons are those aged 15–64 years who, during the reference week: did any work for at least one hour; or had a job or business but were not at work (temporarily absent).

Employment-to-population ratio (labour absorption rate) is the proportion of the working-age population that is employed.

Informal employment identifies persons who are in precarious employment situations irrespective of whether or not the entity for which they work is in the formal or informal sector. Persons in informal employment therefore consist of all persons in the informal sector; employees in the formal sector; and persons working in private households who are not entitled to basic benefits such as pension or medical aid contributions from their employer, and who do not have a written contract of employment.

Informal sector: The informal sector has the following two components:

- i) Employees working in establishments that employ less than five employees, who do not deduct income tax from their salaries/wages; and
- ii) Employers, own-account workers and persons helping unpaid in their household business who are not registered for either income tax or value-added tax.

The **labour force** comprises all persons who are employed plus all persons who are unemployed.

Labour force participation rate is the proportion of the working-age population that is either employed or unemployed.

Long-term unemployment: Persons in long-term unemployment are those individuals among the unemployed who were without work and trying to find a job or start a business for one year or more.

Not economically active: Persons aged 15–64 years who are neither employed nor unemployed in the reference week.

Persons in **underemployment (time-related)** are employed persons who were willing and available to work additional hours, whose total number of hours actually worked during the reference period was below 35 hours per week.

Underutilised labour comprises three groups as follows: persons who are underemployed, persons who are unemployed, and persons who are discouraged.

Unemployed persons are those (aged 15–64 years) who:

- a) Were not employed in the reference week **and**;
- b) Actively looked for work or tried to start a business in the four weeks preceding the survey interview **and**;
- c) Were available for work, i.e. would have been able to start work or a business in the reference week **or**;
- d) Had not actively looked for work in the past four weeks but had a job or business to start at a definite date in the future and were available.

Unemployment rate is the proportion of the labour force that is unemployed.

The **working-age population** comprises all persons aged 15–64 years.

Appendix 1

Table 1: Population of working age (15–64 years)

	Oct-Dec 2010	Jan-Mar 2011	Apr-Jun 2011	Jul-Sep 2011	Oct-Dec 2011	Qtr-to-Qtr change Thousand	Year-on-year change Thousand	Qtr-to-Qtr change Per cent	Year-on- year change Per cent
	Thousand	Thousand	Thousand	Thousand	Thousand				
Both sexes	32 193	32 314	32 435	32 555	32 670	115	477	0,4	1,5
Women	16 589	16 642	16 695	16 747	16 797	50	208	0,3	1,3
Men	15 604	15 672	15 740	15 808	15 873	65	269	0,4	1,7
Population groups	32 193	32 314	32 435	32 555	32 670	115	477	0,4	1,5
Black African	25 149	25 265	25 381	25 496	25 608	112	459	0,4	1,8
Coloured	3 012	3 021	3 030	3 038	3 046	8	34	0,3	1,1
Indian/Asian	918	922	926	930	934	4	16	0,4	1,7
White	3 114	3 106	3 098	3 090	3 081	-9	-33	-0,3	-1,1
South Africa	32 193	32 314	32 435	32 555	32 670	115	477	0,4	1,5
Western Cape	3 403	3 417	3 430	3 444	3 457	13	54	0,4	1,6
Eastern Cape	4 143	4 155	4 167	4 179	4 191	12	48	0,3	1,2
Northern Cape	715	717	719	721	723	2	8	0,3	1,1
Free State	1 863	1 867	1 870	1 874	1 877	3	14	0,2	0,8
KwaZulu-Natal	6 692	6 720	6 748	6 776	6 802	26	110	0,4	1,6
North West	2 025	2 031	2 037	2 043	2 049	6	24	0,3	1,2
Gauteng	7 732	7 763	7 793	7 821	7 847	26	115	0,3	1,5
Mpumalanga	2 307	2 316	2 326	2 336	2 346	10	39	0,4	1,7
Limpopo	3 313	3 329	3 345	3 362	3 378	16	65	0,5	2,0

Due to rounding, numbers do not necessarily add up to totals.

Table 2: Labour force characteristics by sex – All population groups

	Oct-Dec 2010	Jan-Mar 2011	Apr-Jun 2011	Jul-Sep 2011	Oct-Dec 2011	Qtr-to-Qtr change	Year-on-year change	Qtr-to-Qtr change	Year-on- year change
	Thousand	Thousand	Thousand	Thousand	Thousand	Thousand	Thousand	Per cent	Per cent
Both sexes									
Population 15–64 yrs	32 193	32 314	32 435	32 555	32 670	115	477	0,4	1,5
Labour Force	17 269	17 482	17 663	17 761	17 741	-20	472	-0,1	2,7
Employed	13 132	13 118	13 125	13 318	13 497	179	365	1,3	2,8
Formal sector (non-agricultural)	9 163	9 219	9 198	9 436	9 616	180	453	1,9	4,9
Informal sector (non-agricultural)	2 225	2 179	2 213	2 160	2 134	-26	-91	-1,2	-4,1
Agriculture	627	603	598	624	630	6	3	1,0	0,5
Private households	1 117	1 118	1 117	1 098	1 118	20	1	1,8	0,1
Unemployed	4 137	4 364	4 538	4 442	4 244	-198	107	-4,5	2,6
Not economically active	14 924	14 832	14 772	14 795	14 929	134	5	0,9	0,0
Discouraged work-seekers	2 150	2 223	2 207	2 204	2 315	111	165	5,0	7,7
Other (not economically active)	12 774	12 609	12 566	12 591	12 614	23	-160	0,2	-1,3
Rates (%)									
Unemployment rate	24,0	25,0	25,7	25,0	23,9	-1,1	-0,1		
Employed/population ratio (absorption)	40,8	40,6	40,5	40,9	41,3	0,4	0,5		
Labour force participation rate	53,6	54,1	54,5	54,6	54,3	-0,3	0,7		
Women									
Population 15–64 yrs	16 589	16 642	16 695	16 747	16 797	50	208	0,3	1,3
Labour Force	7 762	7 926	8 018	8 064	8 050	-14	288	-0,2	3,7
Employed	5 698	5 688	5 717	5 807	5 920	113	222	1,9	3,9
Formal sector (non-agricultural)	3 711	3 703	3 752	3 852	3 982	130	271	3,4	7,3
Informal sector (non-agricultural)	922	915	912	891	874	-17	-48	-1,9	-5,2
Agriculture	209	208	191	205	198	-7	-11	-3,4	-5,3
Private households	856	863	863	860	866	6	10	0,7	1,2
Unemployed	2 064	2 237	2 301	2 257	2 129	-128	65	-5,7	3,1
Not economically active	8 827	8 716	8 677	8 683	8 748	65	-79	0,7	-0,9
Discouraged work-seekers	1 197	1 235	1 212	1 240	1 281	41	84	3,3	7,0
Other (not economically active)	7 630	7 481	7 465	7 443	7 467	24	-163	0,3	-2,1
Rates (%)									
Unemployment rate	26,6	28,2	28,7	28,0	26,5	-1,5	-0,1		
Employed/population ratio (absorption)	34,3	34,2	34,2	34,7	35,2	0,5	0,9		
Labour force participation rate	46,8	47,6	48,0	48,2	47,9	-0,3	1,1		

Due to rounding, numbers do not necessarily add up to totals.

Note: Employment refers to market production activities.

Table 2: Labour force characteristics by sex – All population groups (concluded)

	Oct-Dec 2010	Jan-Mar 2011	Apr-Jun 2011	Jul-Sep 2011	Oct-Dec 2011	Qtr-to-Qtr change	Year-on-year change	Qtr-to-Qtr change	Year-on- year change
	Thousand	Thousand	Thousand	Thousand	Thousand	Thousand	Thousand	Per cent	Per cent
Men									
Population 15–64 yrs	15 604	15 672	15 740	15 808	15 873	65	269	0,4	1,7
Labour Force	9 507	9 556	9 645	9 697	9 692	-5	185	-0,1	1,9
Employed	7 434	7 430	7 408	7 511	7 577	66	143	0,9	1,9
Formal sector (non-agricultural)	5 452	5 516	5 446	5 584	5 634	50	182	0,9	3,3
Informal sector (non-agricultural)	1 303	1 264	1 301	1 269	1 260	-9	-43	-0,7	-3,3
Agriculture	418	395	407	419	432	13	14	3,1	3,3
Private households	261	255	254	239	251	12	-10	5,0	-3,8
Unemployed	2 073	2 126	2 237	2 186	2 115	-71	42	-3,2	2,0
Not economically active	6 097	6 115	6 095	6 111	6 181	70	84	1,1	1,4
Discouraged work-seekers	953	988	995	963	1 034	71	81	7,4	8,5
Other (not economically active)	5 144	5 128	5 101	5 148	5 147	-1	3	0,0	0,1
Rates (%)									
Unemployment rate	21,8	22,2	23,2	22,5	21,8	-0,7	0,0		
Employed/population ratio (absorption)	47,6	47,4	47,1	47,5	47,7	0,2	0,1		
Labour force participation rate	60,9	61,0	61,3	61,3	61,1	-0,2	0,2		

Due to rounding, numbers do not necessarily add up to totals.

Note: Employment refers to market production activities.

Table 2.1: Labour force characteristics by population group

	Oct-Dec 2010	Jan-Mar 2011	Apr-Jun 2011	Jul-Sep 2011	Oct-Dec 2011	Qtr-to-Qtr change	Year-on-year change	Qtr-to-Qtr change	Year-on- year change
	Thousand	Thousand	Thousand	Thousand	Thousand	Thousand	Thousand	Per cent	Per cent
South Africa									
Population 15-64 yrs	32 193	32 314	32 435	32 555	32 670	115	477	0,4	1,5
Labour Force	17 269	17 482	17 663	17 761	17 741	-20	472	-0,1	2,7
Employed	13 132	13 118	13 125	13 318	13 497	179	365	1,3	2,8
Unemployed	4 137	4 364	4 538	4 442	4 244	-198	107	-4,5	2,6
Not economically active	14 924	14 832	14 772	14 795	14 929	134	5	0,9	0,0
Rates (%)									
Unemployment rate	24,0	25,0	25,7	25,0	23,9	-1,1	-0,1		
Employed/population ratio (absorption)	40,8	40,6	40,5	40,9	41,3	0,4	0,5		
Labour force participation rate	53,6	54,1	54,5	54,6	54,3	-0,3	0,7		
Black African									
Population 15-64 yrs	25 149	25 265	25 381	25 496	25 608	112	459	0,4	1,8
Labour Force	12 724	12 898	13 169	13 165	13 171	6	447	0,0	3,5
Employed	9 149	9 158	9 215	9 361	9 519	158	370	1,7	4,0
Unemployed	3 575	3 740	3 953	3 804	3 651	-153	76	-4,0	2,1
Not economically active	12 425	12 367	12 213	12 331	12 437	106	12	0,9	0,1
Rates (%)									
Unemployment rate	28,1	29,0	30,0	28,9	27,7	-1,2	-0,4		
Employed/population ratio (absorption)	36,4	36,2	36,3	36,7	37,2	0,5	0,8		
Labour force participation rate	50,6	51,1	51,9	51,6	51,4	-0,2	0,8		
Coloured									
Population 15-64 yrs	3 012	3 021	3 030	3 038	3 046	8	34	0,3	1,1
Labour Force	1 885	1 931	1 822	1 957	1 926	-31	41	-1,6	2,2
Employed	1 484	1 495	1 402	1 495	1 520	25	36	1,7	2,4
Unemployed	401	436	420	463	406	-57	5	-12,3	1,2
Not economically active	1 126	1 090	1 208	1 081	1 121	40	-5	3,7	-0,4
Rates (%)									
Unemployment rate	21,3	22,6	23,1	23,6	21,1	-2,5	-0,2		
Employed/population ratio (absorption)	49,3	49,5	46,3	49,2	49,9	0,7	0,6		
Labour force participation rate	62,6	63,9	60,1	64,5	63,2	-1,3	0,6		

Due to rounding, numbers do not necessarily add up to totals.

Note: Employment refers to market production activities.

Table 2.1: Labour force characteristics by population group (concluded)

	Oct-Dec 2010	Jan-Mar 2011	Apr-Jun 2011	Jul-Sep 2011	Oct-Dec 2011	Qtr-to-Qtr change	Year-on-year change	Qtr-to-Qtr change	Year-on- year change
	Thousand	Thousand	Thousand	Thousand	Thousand	Thousand	Thousand	Per cent	Per cent
Indian/Asian									
Population 15-64 yrs	918	922	926	930	934	4	16	0,4	1,7
Labour Force	559	548	557	528	533	5	-26	0,9	-4,7
Employed	514	484	497	471	487	16	-27	3,4	-5,3
Unemployed	44	64	60	57	45	-12	1	-21,1	2,3
Not economically active	360	374	369	402	402	0	42	0,0	11,7
Rates (%)									
Unemployment rate	7,9	11,7	10,8	10,8	8,5	-2,3	0,6		
Employed/population ratio (absorption)	56,0	52,5	53,7	50,6	52,1	1,5	-3,9		
Labour force participation rate	60,8	59,4	60,2	56,8	57,0	0,2	-3,8		
White									
Population 15-64 yrs	3 114	3 106	3 098	3 090	3 081	-9	-33	-0,3	-1,1
Labour Force	2 101	2 105	2 115	2 110	2 112	2	11	0,1	0,5
Employed	1 985	1 981	2 011	1 992	1 971	-21	-14	-1,1	-0,7
Unemployed	116	124	105	118	142	24	26	20,3	22,4
Not economically active	1 013	1 001	983	980	969	-11	-44	-1,1	-4,3
Rates (%)									
Unemployment rate	5,5	5,9	5,0	5,6	6,7	1,1	1,2		
Employed/population ratio (absorption)	63,7	63,8	64,9	64,5	64,0	-0,5	0,3		
Labour force participation rate	67,5	67,8	68,3	68,3	68,6	0,3	1,1		

Due to rounding, numbers do not necessarily add up to totals.

Note: Employment refers to market production activities.

Table 2.2: Labour force characteristics by province

	Oct-Dec 2010	Jan-Mar 2011	Apr-Jun 2011	Jul-Sep 2011	Oct-Dec 2011	Qtr-to-Qtr change	Year-on-year change	Qtr-to-Qtr change	Year-on- year change
	Thousand	Thousand	Thousand	Thousand	Thousand	Thousand	Thousand	Per cent	Per cent
South Africa									
Population 15-64 yrs	32 193	32 314	32 435	32 555	32 670	115	477	0,4	1,5
Labour Force	17 269	17 482	17 663	17 761	17 741	-20	472	-0,1	2,7
Employed	13 132	13 118	13 125	13 318	13 497	179	365	1,3	2,8
Unemployed	4 137	4 364	4 538	4 442	4 244	-198	107	-4,5	2,6
Not economically active	14 924	14 832	14 772	14 795	14 929	134	5	0,9	0,0
Discouraged work-seekers	2 150	2 223	2 207	2 204	2 315	111	165	5,0	7,7
Other	12 774	12 609	12 566	12 591	12 614	23	-160	0,2	-1,3
Rates (%)									
Unemployment rate	24,0	25,0	25,7	25,0	23,9	-1,1	-0,1		
Employed/population ratio (absorption)	40,8	40,6	40,5	40,9	41,3	0,4	0,5		
Labour force participation rate	53,6	54,1	54,5	54,6	54,3	-0,3	0,7		
Western Cape									
Population 15-64 yrs	3 403	3 417	3 430	3 444	3 457	13	54	0,4	1,6
Labour Force	2 271	2 295	2 309	2 356	2 349	-7	78	-0,3	3,4
Employed	1 772	1 784	1 805	1 806	1 842	36	70	2,0	4,0
Unemployed	498	510	504	550	507	-43	9	-7,8	1,8
Not economically active	1 132	1 122	1 121	1 087	1 108	21	-24	1,9	-2,1
Discouraged work-seekers	24	19	34	30	46	16	22	53,3	91,7
Other	1 108	1 102	1 087	1 057	1 062	5	-46	0,5	-4,2
Rates (%)									
Unemployment rate	21,9	22,2	21,8	23,3	21,6	-1,7	-0,3		
Employed/population ratio (absorption)	52,1	52,2	52,6	52,4	53,3	0,9	1,2		
Labour force participation rate	66,7	67,1	67,3	68,4	67,9	-0,5	1,2		

Due to rounding, numbers do not necessarily add up to totals.

Note: Employment refers to market production activities.

Table 2.2: Labour force characteristics by province (continued)

	Oct-Dec 2010	Jan-Mar 2011	Apr-Jun 2011	Jul-Sep 2011	Oct-Dec 2011	Qtr-to-Qtr change	Year-on-year change	Qtr-to-Qtr change	Year-on- year change
	Thousand	Thousand	Thousand	Thousand	Thousand	Thousand	Thousand	Per cent	Per cent
Eastern Cape									
Population 15-64 yrs	4 143	4 155	4 167	4 179	4 191	12	48	0,3	1,2
Labour Force	1 763	1 812	1 840	1 781	1 821	40	58	2,2	3,3
Employed	1 328	1 325	1 309	1 298	1 326	28	-2	2,2	-0,2
Unemployed	435	487	531	483	494	11	59	2,3	13,6
Not economically active	2 380	2 343	2 327	2 399	2 370	-29	-10	-1,2	-0,4
Discouraged work-seekers	371	368	382	388	353	-35	-18	-9,0	-4,9
Other	2 009	1 975	1 945	2 011	2 018	7	9	0,3	0,4
Rates (%)									
Unemployment rate	24,7	26,9	28,9	27,1	27,1	0,0	2,4		
Employed/population ratio (absorption)	32,1	31,9	31,4	31,1	31,6	0,5	-0,5		
Labour force participation rate	42,6	43,6	44,2	42,6	43,4	0,8	0,8		
Northern Cape									
Population 15-64 yrs	715	717	719	721	723	2	8	0,3	1,1
Labour Force	367	381	371	387	397	10	30	2,6	8,2
Employed	278	261	264	278	291	13	13	4,7	4,7
Unemployed	89	119	107	109	106	-3	17	-2,8	19,1
Not economically active	348	336	348	334	326	-8	-22	-2,4	-6,3
Discouraged work-seekers	37	38	30	34	39	5	2	14,7	5,4
Other	311	299	318	300	287	-13	-24	-4,3	-7,7
Rates (%)									
Unemployment rate	24,3	31,3	28,8	28,2	26,7	-1,5	2,4		
Employed/population ratio (absorption)	38,9	36,4	36,7	38,6	40,2	1,6	1,3		
Labour force participation rate	51,3	53,0	51,6	53,7	54,9	1,2	3,6		

Due to rounding, numbers do not necessarily add up to totals.

Note: Employment refers to market production activities.

Table 2.2: Labour force characteristics by province (continued)

	Oct-Dec 2010	Jan-Mar 2011	Apr-Jun 2011	Jul-Sep 2011	Oct-Dec 2011	Qtr-to-Qtr change	Year-on-year change	Qtr-to-Qtr change	Year-on- year change
	Thousand	Thousand	Thousand	Thousand	Thousand	Thousand	Thousand	Per cent	Per cent
Free State									
Population 15-64 yrs	1 863	1 867	1 870	1 874	1 877	3	14	0,2	0,8
Labour Force	1 077	1 082	1 074	1 109	1 067	-42	-10	-3,8	-0,9
Employed	785	780	772	826	753	-73	-32	-8,8	-4,1
Unemployed	292	302	303	283	314	31	22	11,0	7,5
Not economically active	787	785	796	765	810	45	23	5,9	2,9
Discouraged work-seekers	82	87	94	104	87	-17	5	-16,3	6,1
Other	705	698	701	660	723	63	18	9,5	2,6
Rates (%)									
Unemployment rate	27,1	27,9	28,2	25,5	29,4	3,9	2,3		
Employed/population ratio (absorption)	42,1	41,8	41,3	44,1	40,1	-4,0	-2,0		
Labour force participation rate	57,8	58,0	57,5	59,2	56,8	-2,4	-1,0		
KwaZulu-Natal									
Population 15-64 yrs	6 692	6 720	6 748	6 776	6 802	26	110	0,4	1,6
Labour Force	3 040	3 049	3 137	3 103	3 176	73	136	2,4	4,5
Employed	2 439	2 429	2 500	2 510	2 562	52	123	2,1	5,0
Unemployed	601	620	638	593	614	21	13	3,5	2,2
Not economically active	3 652	3 671	3 611	3 672	3 626	-46	-26	-1,3	-0,7
Discouraged work-seekers	540	592	604	549	547	-2	7	-0,4	1,3
Other	3 112	3 079	3 007	3 124	3 079	-45	-33	-1,4	-1,1
Rates (%)									
Unemployment rate	19,8	20,3	20,3	19,1	19,3	0,2	-0,5		
Employed/population ratio (absorption)	36,4	36,1	37,0	37,0	37,7	0,7	1,3		
Labour force participation rate	45,4	45,4	46,5	45,8	46,7	0,9	1,3		

Due to rounding, numbers do not necessarily add up to totals.

Note: Employment refers to market production activities.

Table 2.2: Labour force characteristics by province (concluded)

	Oct-Dec 2010	Jan-Mar 2011	Apr-Jun 2011	Jul-Sep 2011	Oct-Dec 2011	Qtr-to-Qtr change	Year-on-year change	Qtr-to-Qtr change	Year-on- year change
	Thousand	Thousand	Thousand	Thousand	Thousand	Thousand	Thousand	Per cent	Per cent
North West									
Population 15-64 yrs	2 025	2 031	2 037	2 043	2 049	6	24	0,3	1,2
Labour Force	976	963	951	952	928	-24	-48	-2,5	-4,9
Employed	740	722	691	680	700	20	-40	2,9	-5,4
Unemployed	236	241	260	272	228	-44	-8	-16,2	-3,4
Not economically active	1 049	1 068	1 086	1 091	1 121	30	72	2,7	6,9
Discouraged work-seekers	187	178	233	241	262	21	75	8,7	40,1
Other	862	890	854	850	859	9	-3	1,1	-0,3
Rates (%)									
Unemployment rate	24,2	25,0	27,3	28,6	24,6	-4,0	0,4		
Employed/population ratio (absorption)	36,5	35,5	33,9	33,3	34,2	0,9	-2,3		
Labour force participation rate	48,2	47,4	46,7	46,6	45,3	-1,3	-2,9		
Gauteng									
Population 15-64 yrs	7 732	7 763	7 793	7 821	7 847	26	115	0,3	1,5
Labour Force	5 391	5 467	5 523	5 517	5 493	-24	102	-0,4	1,9
Employed	3 953	3 999	3 965	3 983	4 115	132	162	3,3	4,1
Unemployed	1 438	1 469	1 558	1 533	1 379	-154	-59	-10,0	-4,1
Not economically active	2 341	2 295	2 270	2 305	2 354	49	13	2,1	0,6
Discouraged work-seekers	309	319	231	235	309	74	0	31,5	0,0
Other	2 032	1 976	2 039	2 069	2 045	-24	13	-1,2	0,6
Rates (%)									
Unemployment rate	26,7	26,9	28,2	27,8	25,1	-2,7	-1,6		
Employed/population ratio (absorption)	51,1	51,5	50,9	50,9	52,4	1,5	1,3		
Labour force participation rate	69,7	70,4	70,9	70,5	70,0	-0,5	0,3		

Due to rounding, numbers do not necessarily add up to totals.

Note: Employment refers to market production activities.

Table 2.2: Labour force characteristics by province (concluded)

	Oct-Dec 2010	Jan-Mar 2011	Apr-Jun 2011	Jul-Sep 2011	Oct-Dec 2011	Qtr-to-Qtr change	Year-on-year change	Qtr-to-Qtr change	Year-on- year change
	Thousand	Thousand	Thousand	Thousand	Thousand	Thousand	Thousand	Per cent	Per cent
Mpumalanga									
Population 15-64 yrs									
Labour Force	2 307	2 316	2 326	2 336	2 346	10	39	0,4	1,7
Employed	1 228	1 267	1 271	1 285	1 277	-8	49	-0,6	4,0
Unemployed	876	877	884	911	923	12	47	1,3	5,4
Not economically active	352	390	387	374	354	-20	2	-5,3	0,6
Discouraged work-seekers	1 079	1 049	1 055	1 051	1 069	18	-10	1,7	-0,9
Other	207	208	185	213	232	19	25	8,9	12,1
Rates (%)									
Unemployment rate	28,7	30,8	30,4	29,1	27,7	-1,4	-1,0		
Employed/population ratio (absorption)	38,0	37,9	38,0	39,0	39,3	0,3	1,3		
Labour force participation rate	53,2	54,7	54,6	55,0	54,4	-0,6	1,2		
Limpopo									
Population 15-64 yrs									
Labour Force	3 313	3 329	3 345	3 362	3 378	16	65	0,5	2,0
Employed	1 157	1 166	1 186	1 271	1 234	-37	77	-2,9	6,7
Unemployed	962	940	936	1 026	985	-41	23	-4,0	2,4
Not economically active	196	225	251	246	249	3	53	1,2	27,0
Discouraged work-seekers	2 155	2 163	2 159	2 090	2 144	54	-11	2,6	-0,5
Other	393	415	413	410	441	31	48	7,6	12,2
Rates (%)									
Unemployment rate	1 762	1 749	1 746	1 681	1 703	22	-59	1,3	-3,3
Employed/population ratio (absorption)	16,9	19,3	21,1	19,3	20,2	0,9	3,3		
Labour force participation rate	29,0	28,2	28,0	30,5	29,2	-1,3	0,2		
	35,0	35,0	35,5	37,8	36,5	-1,3	1,5		

Due to rounding, numbers do not necessarily add up to totals.

Note: Employment refers to market production activities.

Table 2.3: Labour force characteristics by province – Expanded definition of unemployment

	Oct-Dec 2010	Jan-Mar 2011	Apr-Jun 2011	Jul-Sep 2011	Oct-Dec 2011	Qtr-to-Qtr change	Year-on-year change	Qtr-to-Qtr change	Year-on- year change
	Thousand	Thousand	Thousand	Thousand	Thousand	Thousand	Thousand	Per cent	Per cent
South Africa									
Population 15-64 yrs	32 193	32 314	32 435	32 555	32 670	115	477	0,4	1,5
Labour Force	20 439	20 650	20 804	20 822	20 893	71	454	0,3	2,2
Employed	13 132	13 118	13 125	13 318	13 497	179	365	1,3	2,8
Unemployed	7 307	7 532	7 678	7 504	7 396	- 108	89	-1,4	1,2
Not economically active	11 754	11 664	11 632	11 733	11 777	44	23	0,4	0,2
Rates (%)									
Unemployment rate	35,8	36,5	36,9	36,0	35,4	-0,6	-0,4		
Employed/population ratio (absorption)	40,8	40,6	40,5	40,9	41,3	0,4	0,5		
Labour force participation rate	63,5	63,9	64,1	64,0	64,0	0,0	0,5		
Western Cape									
Population 15-64 yrs	3 403	3 417	3 430	3 444	3 457	13	54	0,4	1,6
Labour Force	2 331	2 341	2 362	2 408	2 433	25	102	1,0	4,4
Employed	1 772	1 784	1 805	1 806	1 842	36	70	2,0	4,0
Unemployed	559	556	557	602	590	- 12	31	-2,0	5,5
Not economically active	1 072	1 076	1 068	1 036	1 024	- 12	-48	-1,2	-4,5
Rates (%)									
Unemployment rate	24,0	23,8	23,6	25,0	24,3	-0,7	0,3		
Employed/population ratio (absorption)	52,1	52,2	52,6	52,4	53,3	0,9	1,2		
Labour force participation rate	68,5	68,5	68,9	69,9	70,4	0,5	1,9		
Eastern Cape									
Population 15-64 yrs	4 143	4 155	4 167	4 179	4 191	12	48	0,3	1,2
Labour Force	2 214	2 244	2 280	2 234	2 243	9	29	0,4	1,3
Employed	1 328	1 325	1 309	1 298	1 326	28	- 2	2,2	-0,2
Unemployed	886	919	971	936	917	- 19	31	-2,0	3,5
Not economically active	1 929	1 911	1 887	1 945	1 947	2	18	0,1	0,9
Rates (%)									
Unemployment rate	40,0	41,0	42,6	41,9	40,9	-1,0	0,9		
Employed/population ratio (absorption)	32,1	31,9	31,4	31,1	31,6	0,5	-0,5		
Labour force participation rate	53,4	54,0	54,7	53,5	53,5	0,0	0,1		

Due to rounding, numbers do not necessarily add up to totals.

Note: Employment refers to market production activities.

Table 2.3: Labour force characteristics by province – Expanded definition of unemployment (continued)

	Oct-Dec 2010	Jan-Mar 2011	Apr-Jun 2011	Jul-Sep 2011	Oct-Dec 2011	Qtr-to-Qtr change	Year-on-year change	Qtr-to-Qtr change	Year-on-year change
	Thousand	Thousand	Thousand	Thousand	Thousand	Thousand	Thousand	Per cent	Per cent
Northern Cape									
Population 15-64 yrs	715	717	719	721	723	2	8	0,3	1,1
Labour Force	424	441	422	435	448	13	24	3,0	5,7
Employed	278	261	264	278	291	13	13	4,7	4,7
Unemployed	146	179	157	157	157	0	11	0,0	7,5
Not economically active	291	276	297	286	275	- 11	-16	-3,8	-5,5
Rates (%)									
Unemployment rate	34,4	40,7	37,3	36,1	35,0	-1,1	0,6		
Employed/population ratio (absorption)	38,9	36,4	36,7	38,6	40,2	1,6	1,3		
Labour force participation rate	59,3	61,4	58,6	60,3	62,0	1,7	2,7		
Free State									
Population 15-64 yrs	1 863	1 867	1 870	1 874	1 877	3	14	0,2	0,8
Labour Force	1 208	1 222	1 225	1 253	1 197	- 56	- 11	-4,5	-0,9
Employed	785	780	772	826	753	- 73	- 32	-8,8	-4,1
Unemployed	423	443	453	426	444	18	21	4,2	5,0
Not economically active	655	645	645	621	680	59	25	9,5	3,8
Rates (%)									
Unemployment rate	35,0	36,2	37,0	34,0	37,1	3,1	2,1		
Employed/population ratio (absorption)	42,1	41,8	41,3	44,1	40,1	-4,0	-2,0		
Labour force participation rate	64,8	65,5	65,5	66,8	63,8	-3,0	-1,0		
KwaZulu-Natal									
Population 15-64 yrs	6 692	6 720	6 748	6 776	6 802	26	110	0,4	1,6
Labour Force	3 950	3 982	4 101	4 022	4 038	16	88	0,4	2,2
Employed	2 439	2 429	2 500	2 510	2 562	52	123	2,1	5,0
Unemployed	1 511	1 552	1 602	1 512	1 476	-36	- 35	-2,4	-2,3
Not economically active	2 742	2 738	2 647	2 754	2 764	10	22	0,4	0,8
Rates (%)									
Unemployment rate	38,3	39,0	39,1	37,6	36,6	-1,0	-1,7		
Employed/population ratio (absorption)	36,4	36,1	37,0	37,0	37,7	0,7	1,3		
Labour force participation rate	59,0	59,2	60,8	59,4	59,4	0,0	0,4		

Due to rounding, numbers do not necessarily add up to totals.

Note: Employment refers to market production activities.

Table 2.3: Labour force characteristics by province – Expanded definition of unemployment (concluded)

	Oct-Dec 2010	Jan-Mar 2011	Apr-Jun 2011	Jul-Sep 2011	Oct-Dec 2011	Qtr-to-Qtr change	Year-on- year change	Qtr-to-Qtr change	Year-on- year change
	Thousand	Thousand	Thousand	Thousand	Thousand	Thousand	Thousand	Per cent	Per cent
North West									
Population 15-64 yrs	2 025	2 031	2 037	2 043	2 049	6	24	0,3	1,2
Labour Force	1 267	1 254	1 286	1 264	1 272	8	5	0,6	0,4
Employed	740	722	691	680	700	20	-40	2,9	-5,4
Unemployed	527	532	595	584	572	-12	45	-2,1	8,5
Not economically active	758	777	751	779	777	-2	19	-0,3	2,5
Rates (%)									
Unemployment rate	41,6	42,4	46,3	46,2	45,0	-1,2	3,4		
Employed/population ratio (absorption)	36,5	35,5	33,9	33,3	34,2	0,9	-2,3		
Labour force participation rate	62,6	61,7	63,1	61,9	62,1	0,2	-0,5		
Gauteng									
Population 15-64 yrs	7 732	7 763	7 793	7 821	7 847	26	115	0,3	1,5
Labour Force	5 797	5 866	5 821	5 827	5 867	40	70	0,7	1,2
Employed	3 953	3 999	3 965	3 983	4 115	132	162	3,3	4,1
Unemployed	1 844	1 867	1 857	1 844	1 752	-92	-92	-5,0	-5,0
Not economically active	1 936	1 897	1 972	1 994	1 980	-14	44	-0,7	2,3
Rates (%)									
Unemployment rate	31,8	31,8	31,9	31,6	29,9	-1,7	-1,9		
Employed/population ratio (absorption)	51,1	51,5	50,9	50,9	52,4	1,5	1,3		
Labour force participation rate	75,0	75,6	74,7	74,5	74,8	0,3	-0,2		
Mpumalanga									
Population 15-64 yrs	2 307	2 316	2 326	2 336	2 346	10	39	0,4	1,7
Labour Force	1 574	1 600	1 573	1 591	1 614	23	40	1,4	2,5
Employed	876	877	884	911	923	12	47	1,3	5,4
Unemployed	698	722	689	680	691	11	-7	1,6	-1,0
Not economically active	733	717	753	745	732	-13	-1	-1,7	-0,1
Rates (%)									
Unemployment rate	44,3	45,2	43,8	42,7	42,8	0,1	-1,5		
Employed/population ratio (absorption)	38,0	37,9	38,0	39,0	39,3	0,3	1,3		
Labour force participation rate	68,2	69,0	67,6	68,1	68,8	0,7	0,6		

Due to rounding, numbers do not necessarily add up to totals.

Note: Employment refers to market production activities.

Table 2.3: Labour force characteristics by province – Expanded definition of unemployment (concluded)

	Oct-Dec 2010	Jan-Mar 2011	Apr-Jun 2011	Jul-Sep 2011	Oct-Dec 2011	Qtr-to-Qtr change Thousand	Year-on- year change Thousand	Qtr-to-Qtr change Per cent	Year-on- year change Per cent
	Thousand	Thousand	Thousand	Thousand	Thousand	Thousand	Thousand	Per cent	Per cent
Limpopo									
Population 15-64 yrs	3 313	3 329	3 345	3 362	3 378	16	65	0,5	2,0
Labour Force	1 674	1 702	1 733	1 789	1 781	- 8	107	-0,4	6,4
Employed	962	940	936	1 026	985	- 41	23	-4,0	2,4
Unemployed	713	761	798	763	796	33	83	4,3	11,6
Not economically active	1 638	1 627	1 612	1 573	1 597	24	-41	1,5	-2,5
Rates (%)									
Unemployment rate	42,6	44,7	46,0	42,6	44,7	2,1	2,1		
Employed/population ratio (absorption)	29,0	28,2	28,0	30,5	29,2	-1,3	0,2		
Labour force participation rate	50,6	51,1	51,8	53,2	52,7	-0,5	2,1		

Due to rounding, numbers do not necessarily add up to totals.

Note: Employment refers to market production activities.

Table 3.1: Employed by industry and sex – South Africa

	Oct-Dec 2010	Jan-Mar 2011	Apr-Jun 2011	Jul-Sep 2011	Oct-Dec 2011	Qtr-to-Qtr change Thousand	Year-on-year change Thousand	Qtr-to-Qtr change Thousand	Year-on-year change Thousand
	Thousand	Thousand	Thousand	Thousand	Thousand	Thousand	Thousand	Thousand	Thousand
Both sexes	13 132	13 118	13 125	13 318	13 497	179	365	1,3	2,8
Agriculture	627	603	598	624	630	6	3	1,0	0,5
Mining	298	313	282	324	327	3	29	0,9	9,7
Manufacturing	1 783	1 803	1 735	1 737	1 789	52	6	3,0	0,3
Utilities	94	97	93	73	81	8	-13	11,0	-13,8
Construction	1 056	1 031	1 043	1 086	1 057	-29	1	-2,7	0,1
Trade	2 975	2 962	2 944	3 012	3 060	48	85	1,6	2,9
Transport	761	727	777	756	788	32	27	4,2	3,5
Finance	1 594	1 631	1 704	1 768	1 739	-29	145	-1,6	9,1
Community and social services	2 826	2 828	2 831	2 836	2 902	66	76	2,3	2,7
Private households	1 117	1 118	1 117	1 098	1 118	20	1	1,8	0,1
Other	1	5	3	4	6	2	5	50,0	500,0
Women	5 698	5 688	5 717	5 807	5 920	113	222	1,9	3,9
Agriculture	209	208	191	205	198	-7	-11	-3,4	-5,3
Mining	41	37	32	31	34	3	-7	9,7	-17,1
Manufacturing	613	629	592	580	581	1	-32	0,2	-5,2
Utilities	28	31	22	13	14	1	-14	7,7	-50,0
Construction	110	108	119	112	118	6	8	5,4	7,3
Trade	1 405	1 397	1 376	1 414	1 469	55	64	3,9	4,6
Transport	152	130	148	140	167	27	15	19,3	9,9
Finance	645	662	747	781	743	-38	98	-4,9	15,2
Community and social services	1 638	1 621	1 628	1 672	1 729	57	91	3,4	5,6
Private households	856	863	863	860	866	6	10	0,7	1,2
Other	1	3	1	1	2	1	1	100,0	100,0
Men	7 434	7 430	7 408	7 511	7 577	66	143	0,9	1,9
Agriculture	418	395	407	419	432	13	14	3,1	3,3
Mining	257	276	249	292	294	2	37	0,7	14,4
Manufacturing	1 171	1 174	1 143	1 156	1 208	52	37	4,5	3,2
Utilities	67	66	71	60	67	7	0	11,7	0,0
Construction	946	923	925	975	939	-36	-7	-3,7	-0,7
Trade	1 570	1 565	1 568	1 599	1 592	-7	22	-0,4	1,4
Transport	609	597	629	616	621	5	12	0,8	2,0
Finance	949	969	957	987	996	9	47	0,9	5,0
Community and social services	1 188	1 207	1 203	1 164	1 173	9	-15	0,8	-1,3
Private households	261	255	254	239	251	12	-10	5,0	-3,8
Other	.	2	2	3	5	2	.	66,7	.

Table 3.2: Employed by industry and province

	Oct-Dec 2010	Jan-Mar 2011	Apr-Jun 2011	Jul-Sep 2011	Oct-Dec 2011	Qtr-to-Qtr change	Year-on- year change	Qtr-to-Qtr change	Year-on- year change
	Thousand	Thousand	Thousand	Thousand	Thousand	Thousand	Thousand	Thousand	Thousand
Agriculture	627	603	598	624	630	6	3	1,0	0,5
Western Cape	122	121	100	113	94	-19	-28	-16,8	-23,0
Eastern Cape	66	64	61	67	64	-3	-2	-4,5	-3,0
Northern Cape	54	53	47	47	55	8	1	17,0	1,9
Free State	64	62	73	68	62	-6	-2	-8,8	-3,1
KwaZulu-Natal	121	108	99	97	95	-2	-26	-2,1	-21,5
North West	31	37	32	31	30	-1	-1	-3,2	-3,2
Gauteng	27	34	34	39	64	25	37	64,1	137,0
Mpumalanga	74	71	78	75	75	0	1	0,0	1,4
Limpopo	67	52	74	87	90	3	23	3,4	34,3
Mining	298	313	282	324	327	3	29	0,9	9,7
Western Cape	3	2	4	6	4	-2	1	-33,3	33,3
Eastern Cape	.	2	.	1
Northern Cape	9	11	10	10	13	3	4	30,0	44,4
Free State	29	21	16	21	27	6	-2	28,6	-6,9
KwaZulu-Natal	13	14	6	16	13	-3	0	-18,8	0,0
North West	123	131	108	114	110	-4	-13	-3,5	-10,6
Gauteng	23	22	31	25	30	5	7	20,0	30,4
Mpumalanga	50	52	52	72	69	-3	19	-4,2	38,0
Limpopo	48	57	55	58	61	3	13	5,2	27,1
Manufacturing	1 783	1 803	1 735	1 737	1 789	52	6	3,0	0,3
Western Cape	283	290	277	276	320	44	37	15,9	13,1
Eastern Cape	163	183	201	171	155	-16	-8	-9,4	-4,9
Northern Cape	12	14	9	13	15	2	3	15,4	25,0
Free State	62	63	60	65	64	-1	2	-1,5	3,2
KwaZulu-Natal	371	389	397	400	428	28	57	7,0	15,4
North West	77	62	63	67	62	-5	-15	-7,5	-19,5
Gauteng	667	663	581	600	608	8	-59	1,3	-8,8
Mpumalanga	80	77	75	77	76	-1	-4	-1,3	-5,0
Limpopo	69	62	71	67	62	-5	-7	-7,5	-10,1

For all values of 10 000 or lower the sample size is too small for reliable estimates.
Due to rounding, numbers do not necessarily add up to totals.

Table 3.2: Employed by industry and province (continued)

	Oct-Dec 2010	Jan-Mar 2011	Apr-Jun 2011	Jul-Sep 2011	Oct-Dec 2011	Qtr-to-Qtr change	Year-on-year change	Qtr-to-Qtr change	Year-on- year change
	Thousand	Thousand	Thousand	Thousand	Thousand	Thousand	Thousand	Per cent	Per cent
Utilities	94	97	93	73	81	8	-13	11,0	-13,8
Western Cape	10	11	12	10	6	-4	-4	-40,0	-40,0
Eastern Cape	2	6	6	5	5	0	3	0,0	150,0
Northern Cape	1		2	3	3	0	2	0,0	200,0
Free State	4	4	4	3	3	0	-1	0,0	-25,0
KwaZulu-Natal	17	19	18	8	7	-1	-10	-12,5	-58,8
North West	1	2	3	3	3	0	2	0,0	200,0
Gauteng	28	25	19	24	25	1	-3	4,2	-10,7
Mpumalanga	23	22	23	14	22	8	-1	57,1	-4,3
Limpopo	8	9	6	5	7	2	-1	40,0	-12,5
Construction	1 056	1 031	1 043	1 086	1 057	-29	1	-2,7	0,1
Western Cape	130	124	118	129	144	15	14	11,6	10,8
Eastern Cape	129	120	118	107	124	17	-5	15,9	-3,9
Northern Cape	18	14	13	21	19	-2	1	-9,5	5,6
Free State	54	56	54	108	49	-59	-5	-54,6	-9,3
KwaZulu-Natal	225	226	235	234	239	5	14	2,1	6,2
North West	43	45	45	41	49	8	6	19,5	14,0
Gauteng	274	284	313	259	259	0	-15	0,0	-5,5
Mpumalanga	74	69	69	76	78	2	4	2,6	5,4
Limpopo	109	93	78	111	95	-16	-14	-14,4	-12,8
Trade	2 975	2 962	2 944	3 012	3 060	48	85	1,6	2,9
Western Cape	379	388	406	397	406	9	27	2,3	7,1
Eastern Cape	313	295	286	296	308	12	-5	4,1	-1,6
Northern Cape	39	35	39	40	42	2	3	5	7,7
Free State	169	167	178	176	173	-3	4	-1,7	2,4
KwaZulu-Natal	523	536	555	605	614	9	91	1,5	17,4
North West	162	150	141	130	138	8	-24	6,2	-14,8
Gauteng	922	930	899	894	914	20	-8	2,2	-0,9
Mpumalanga	219	218	217	222	222	0	3	0,0	1,4
Limpopo	250	243	224	252	242	-10	-8	-4	-3,2

For all values of 10 000 or lower the sample size is too small for reliable estimates.

Due to rounding, numbers do not necessarily add up to totals.

Table 3.2: Employed by industry and province (concluded)

	Oct-Dec 2010	Jan-Mar 2011	Apr-Jun 2011	Jul-Sep 2011	Oct-Dec 2011	Qtr-to-Qtr change Thousand	Year-on-year change Thousand	Qtr-to-Qtr change Per cent	Year-on- year change Per cent
	Thousand	Thousand	Thousand	Thousand	Thousand	Thousand	Thousand	Per cent	Per cent
Transport	761	727	777	756	788	32	27	4,2	3,5
Western Cape	112	113	106	105	96	-9	-16	-8,6	-14,3
Eastern Cape	70	57	74	75	75	0	5	0	7,1
Northern Cape	12	14	11	10	10	0	-2	0	-16,7
Free State	37	36	31	33	35	2	-2	6,1	-5,4
KwaZulu-Natal	185	174	181	156	171	15	-14	9,6	-7,6
North West	21	21	24	22	26	4	5	18,2	23,8
Gauteng	250	244	278	278	298	20	48	7,2	19,2
Mpumalanga	34	34	39	42	39	-3	5	-7,1	14,7
Limpopo	39	33	34	35	39	4	0	11,4	0,0
Finance	1 594	1 631	1 704	1 768	1 739	-29	145	-1,6	9,1
Western Cape	244	239	286	288	281	-7	37	-2,4	15,2
Eastern Cape	110	125	139	138	147	9	37	6,5	33,6
Northern Cape	22	15	24	23	27	4	5	17,4	22,7
Free State	83	80	76	75	62	-13	-21	-17,3	-25,3
KwaZulu-Natal	266	259	274	287	277	-10	11	-3,5	4,1
North West	55	61	55	63	56	-7	1	-11,1	1,8
Gauteng	675	705	705	744	740	-4	65	-0,5	9,6
Mpumalanga	82	82	82	81	84	3	2	3,7	2,4
Limpopo	58	64	64	69	66	-3	8	-4,3	13,8
Community and social services	2 826	2 828	2 831	2 836	2 902	66	76	2,3	2,7
Western Cape	377	390	382	364	374	10	-3	2,7	-0,8
Eastern Cape	356	333	326	330	339	9	-17	2,7	-4,8
Northern Cape	79	79	83	83	79	-4	0	-4,8	0,0
Free State	191	199	197	197	192	-5	1	-2,5	0,5
KwaZulu-Natal	510	514	509	486	516	30	6	6,2	1,2
North West	168	152	151	151	165	14	-3	9,3	-1,8
Gauteng	770	760	769	805	830	25	60	3,1	7,8
Mpumalanga	160	172	164	163	163	0	3	0	1,9
Limpopo	215	227	249	257	244	-13	29	-5,1	13,5

For all values of 10 000 or lower the sample size is too small for reliable estimates.
Due to rounding, numbers do not necessarily add up to totals.

Table 3.2: Employed by industry and province (concluded)

	Oct-Dec 2010	Jan-Mar 2011	Apr-Jun 2011	Jul-Sep 2011	Oct-Dec 2011	Qtr-to-Qtr change	Year-on-year change	Qtr-to-Qtr change	Year-on- year change
	Thousand	Thousand	Thousand	Thousand	Thousand	Thousand	Thousand	Per cent	Per cent
Private households	1 117	1 118	1 117	1 098	1 118	20	1	1,8	0,1
Western Cape	113	105	113	119	117	-2	4	-1,7	3,5
Eastern Cape	120	139	97	106	110	4	-10	3,8	-8,3
Northern Cape	32	25	26	27	28	1	-4	3,7	-12,5
Free State	91	90	83	82	85	3	-6	3,7	-6,6
KwaZulu-Natal	208	188	226	220	201	-19	-7	-8,6	-3,4
North West	59	61	67	59	61	2	2	3,4	3,4
Gauteng	317	328	336	312	341	29	24	9,3	7,6
Mpumalanga	80	81	87	90	95	5	15	5,6	18,8
Limpopo	98	101	81	84	78	-6	-20	-7,1	-20,4

For all values of 10 000 or lower the sample size is too small for reliable estimates.
Due to rounding, numbers do not necessarily add up to totals.

Table 3.3: Employed by sector and industry – South Africa

	Oct-Dec 2010	Jan-Mar 2011	Apr-Jun 2011	Jul-Sep 2011	Oct-Dec 2011	Qtr-to-Qtr change Thousand	Year-on- year change Thousand	Qtr-to-Qtr change Per cent	Year-on- year change Per cent
	Thousand	Thousand	Thousand	Thousand	Thousand	Thousand	Thousand	Per cent	Per cent
Total employed	13 132	13 118	13 125	13 318	13 497	179	365	1,3	2,8
Formal and informal sector (non-agricultural)	11 388	11 397	11 411	11 596	11 750	154	362	1,3	3,2
Mining	298	313	282	324	327	3	29	0,9	9,7
Manufacturing	1 783	1 803	1 735	1 737	1 789	52	6	3,0	0,3
Utilities	94	97	93	73	81	8	-13	11,0	-13,8
Construction	1 056	1 031	1 043	1 086	1 057	-29	1	-2,7	0,1
Trade	2 975	2 962	2 944	3 012	3 060	48	85	1,6	2,9
Transport	761	727	777	756	788	32	27	4,2	3,5
Finance	1 594	1 631	1 704	1 768	1 739	-29	145	-1,6	9,1
Community and social services	2 826	2 828	2 831	2 836	2 902	66	76	2,3	2,7
Other	1	5	3	4	6	2	5	50,0	500,0
Formal sector (non- agricultural)	9 163	9 219	9 198	9 436	9 616	180	453	1,9	4,9
Mining	297	306	280	323	327	4	30	1,2	10,1
Manufacturing	1 556	1 584	1 513	1 527	1 586	59	30	3,9	1,9
Utilities	91	96	90	71	80	9	-11	12,7	-12,1
Construction	737	739	730	783	737	-46	0	-5,9	0,0
Trade	1 927	1 935	1 938	1 979	2 064	85	137	4,3	7,1
Transport	573	536	567	572	597	25	24	4,4	4,2
Finance	1 452	1 505	1 549	1 618	1 598	-20	146	-1,2	10,1
Community and social services	2 529	2 513	2 529	2 559	2 622	63	93	2,5	3,7
Other	1	5	2	4	5	1	4	25,0	400,0
Informal sector (non-agricultural)	2 225	2 179	2 213	2 160	2 134	-26	-91	-1,2	-4,1
Mining	1	7	1	1		-1	-1	-100,0	-100,0
Manufacturing	227	219	222	209	203	-6	-24	-2,9	-10,6
Utilities	3	1	4	2		-2	-3	-100,0	-100,0
Construction	319	293	314	303	320	17	1	5,6	0,3
Trade	1 048	1 027	1 006	1 033	997	-36	-51	-3,5	-4,9
Transport	188	191	210	184	192	8	4	4,3	2,1
Finance	142	126	155	150	141	-9	-1	-6,0	-0,7
Community and social services	297	315	301	277	280	3	-17	1,1	-5,7
Other	.	.	1	.	1
Agriculture	627	603	598	624	630	6	3	1,0	0,5
Private households	1 117	1 118	1 117	1 098	1 118	20	1	2	0,5

For all values of 10 000 or lower the sample size is too small for reliable estimates.

Due to rounding, numbers do not necessarily add up to totals.

Table 3.4: Employed by province and sector

	Oct-Dec 2010	Jan-Mar 2011	Apr-Jun 2011	Jul-Sep 2011	Oct-Dec 2011	Qtr-to-Qtr change	Year-on- year change	Qtr-to-Qtr change	Year-on- year change
	Thousand	Thousand	Thousand	Thousand	Thousand	Thousand	Thousand	Per cent	Per cent
South Africa	13 132	13 118	13 125	13 318	13 497	179	365	1,3	2,8
Formal sector (non-agricultural)	9 163	9 219	9 198	9 436	9 616	180	453	1,9	4,9
Informal sector (non-agricultural)	2 225	2 179	2 213	2 160	2 134	-26	-91	-1,2	-4,1
Agriculture	627	603	598	624	630	6	3	1,0	0,5
Private households	1 117	1 118	1 117	1 098	1 118	20	1	1,8	0,1
Western Cape	1 772	1 784	1 805	1 806	1 842	36	70	2,0	4,0
Formal sector (non-agricultural)	1 361	1 366	1 414	1 387	1 455	68	94	4,9	6,9
Informal sector (non-agricultural)	177	192	178	188	176	-12	-1	-6,4	-0,6
Agriculture	122	121	100	113	94	-19	-28	-16,8	-23,0
Private households	113	105	113	119	117	-2	4	-1,7	3,5
Eastern Cape	1 328	1 325	1 309	1 298	1 326	28	-2	2,2	-0,2
Formal sector (non-agricultural)	844	864	871	876	903	27	59	3,1	7,0
Informal sector (non-agricultural)	298	258	279	249	250	1	-48	0,4	-16,1
Agriculture	66	64	61	67	64	-3	-2	-4,5	-3,0
Private households	120	139	97	106	110	4	-10	3,8	-8,3
Northern Cape	278	261	264	278	291	13	13	4,7	4,7
Formal sector (non-agricultural)	161	152	162	170	178	8	17	4,7	10,6
Informal sector (non-agricultural)	31	31	28	34	30	-4	-1	-11,8	-3,2
Agriculture	54	53	47	47	55	8	1	17,0	1,9
Private households	32	25	26	27	28	1	-4	3,7	-12,5
Free State	785	780	772	826	753	-73	-32	-8,8	-4,1
Formal sector (non-agricultural)	502	495	480	544	488	-56	-14	-10,3	-2,8
Informal sector (non-agricultural)	128	132	136	133	118	-15	-10	-11,3	-7,8
Agriculture	64	62	73	68	62	-6	-2	-8,8	-3,1
Private households	91	90	83	82	85	3	-6	3,7	-6,6
KwaZulu-Natal	2 439	2 429	2 500	2 510	2 562	52	123	2,1	5,0
Formal sector (non-agricultural)	1 667	1 672	1 688	1 688	1 757	69	90	4,1	5,4
Informal sector (non-agricultural)	443	462	487	505	509	4	66	0,8	14,9
Agriculture	121	108	99	97	95	-2	-26	-2,1	-21,5
Private households	208	188	226	220	201	-19	-7	-8,6	-3,4

For all values of 10 000 or lower the sample size is too small for reliable estimates.
Due to rounding, numbers do not necessarily add up to totals.

Table 3.4: Employed by province and sector (concluded)

	Oct-Dec 2010	Jan-Mar 2011	Apr-Jun 2011	Jul-Sep 2011	Oct-Dec 2011	Qtr-to-Qtr change	Year-on- year change	Qtr-to-Qtr change	Year-on- year change
	Thousand	Thousand	Thousand	Thousand	Thousand	Thousand	Thousand	Per cent	Per cent
North West	740	722	691	680	700	20	-40	2,9	-5,4
Formal sector (non-agricultural)	559	534	504	506	519	13	-40	2,6	-7,2
Informal sector (non-agricultural)	90	89	87	85	89	4	-1	4,7	-1,1
Agriculture	31	37	32	31	30	-1	-1	-3,2	-3,2
Private households	59	61	67	59	61	2	2	3,4	3,4
Gauteng	3 953	3 999	3 965	3 983	4 115	132	162	3,3	4,1
Formal sector (non-agricultural)	3 061	3 099	3 053	3 126	3 217	91	156	2,9	5,1
Informal sector (non-agricultural)	547	538	543	506	492	-14	-55	-2,8	-10,1
Agriculture	27	34	34	39	64	25	37	64,1	137,0
Private households	317	328	336	312	341	29	24	9,3	7,6
Mpumalanga	876	877	884	911	923	12	47	1,3	5,4
Formal sector (non-agricultural)	536	535	519	563	555	-8	19	-1,4	3,5
Informal sector (non-agricultural)	186	191	201	183	197	14	11	7,7	5,9
Agriculture	74	71	78	75	75	0	1	0,0	1,4
Private households	80	81	87	90	95	5	15	5,6	18,8
Limpopo	962	940	936	1 026	985	-41	23	-4,0	2,4
Formal sector (non-agricultural)	471	502	507	577	544	-33	73	-5,7	15,5
Informal sector (non-agricultural)	325	286	274	278	273	-5	-52	-1,8	-16,0
Agriculture	67	52	74	87	90	3	23	3,4	34,3
Private households	98	101	81	84	78	-6	-20	-7,1	-20,4

For all values of 10 000 or lower the sample size is too small for reliable estimates.
Due to rounding, numbers do not necessarily add up to totals.

Table 3.5: Employed by sex and occupation – South Africa

	Oct-Dec 2010	Jan-Mar 2011	Apr-Jun 2011	Jul-Sep 2011	Oct-Dec 2011	Qtr-to-Qtr change Thousand	Year-on-year change Thousand	Qtr-to-Qtr change Per cent	Year-on- year change Per cent
	Thousand	Thousand	Thousand	Thousand	Thousand	Thousand	Thousand	Per cent	Per cent
Both sexes	13 132	13 118	13 125	13 318	13 497	179	365	1,3	2,8
Manager	1 124	1 136	1 124	1 130	1 130	0	6	0,0	0,5
Professional	762	750	762	763	745	-18	-17	-2,4	-2,2
Technician	1 469	1 461	1 469	1 440	1 498	58	29	4,0	2,0
Clerk	1 434	1 341	1 358	1 426	1 523	97	89	6,8	6,2
Sales and services	1 882	1 904	1 944	1 975	1 960	-15	78	-0,8	4,1
Skilled agriculture	73	75	71	61	67	6	-6	9,8	-8,2
Craft and related trade	1 566	1 621	1 576	1 655	1 637	-18	71	-1,1	4,5
Plant and machine operator	1 125	1 134	1 121	1 097	1 126	29	1	2,6	0,1
Elementary	2 829	2 821	2 824	2 894	2 933	39	104	1,3	3,7
Domestic worker	869	877	876	878	878	0	9	0,0	1,0
Women	5 698	5 688	5 717	5 807	5 920	113	222	1,9	3,9
Manager	357	361	352	349	340	-9	-17	-2,6	-4,8
Professional	343	328	351	373	343	-30	0	-8,0	0,0
Technician	811	811	823	796	838	42	27	5,3	3,3
Clerk	985	931	941	988	1 066	78	81	7,9	8,2
Sales and services	838	826	843	875	886	11	48	1,3	5,7
Skilled agriculture	21	22	18	20	21	1	0	5,0	0,0
Craft and related trade	188	203	193	185	186	1	-2	0,5	-1,1
Plant and machine operator	163	178	166	166	165	-1	2	-0,6	1,2
Elementary	1 166	1 188	1 189	1 211	1 233	22	67	1,8	5,7
Domestic worker	826	842	841	843	843	0	17	0,0	2,1
Men	7 434	7 430	7 408	7 511	7 577	66	143	0,9	1,9
Manager	767	775	772	781	790	9	23	1,2	3,0
Professional	419	421	411	390	402	12	-17	3,1	-4,1
Technician	658	650	647	643	660	17	2	2,6	0,3
Clerk	449	409	416	437	457	20	8	4,6	1,8
Sales and services	1 043	1 078	1 102	1 100	1 075	-25	32	-2,3	3,1
Skilled agriculture	52	53	52	41	46	5	-6	12,2	-11,5
Craft and related trade	1 378	1 418	1 383	1 471	1 452	-19	74	-1,3	5,4
Plant and machine operator	962	956	955	931	960	29	-2	3,1	-0,2
Elementary	1 663	1 633	1 635	1 683	1 700	17	37	1,0	2,2
Domestic worker	43	35	36	34	35	1	-8	2,9	-18,6

For all values of 10 000 or lower the sample size is too small for reliable estimates.
Due to rounding, numbers do not necessarily add up to totals.

Table 3.6: Employed by sex and status in employment – South Africa									
	Oct-Dec 2010	Jan-Mar 2011	Apr-Jun 2011	Jul-Sep 2011	Oct-Dec 2011	Qtr-to-Qtr change	Year-on-year change	Qtr-to-Qtr change	Year-on- year change
	Thousand	Thousand	Thousand	Thousand	Thousand	Thousand	Thousand	Per cent	Per cent
Both sexes	13 132	13 118	13 125	13 318	13 497	179	365	1,3	2,8
Employee	11 039	11 061	11 056	11 263	11 460	197	421	1,7	3,8
Employer	754	726	748	713	704	-9	-50	-1,3	-6,6
Own-account worker	1 240	1 230	1 224	1 231	1 230	-1	-10	-0,1	-0,8
Unpaid household member	99	102	97	112	103	-9	4	-8,0	4,0
Women	5 698	5 688	5 717	5 807	5 920	113	222	1,9	3,9
Employee	4 857	4 870	4 892	5 001	5 125	124	268	2,5	5,5
Employer	171	173	168	158	148	-10	-23	-6,3	-13,5
Own-account worker	613	581	589	584	580	-4	-33	-0,7	-5,4
Unpaid household member	56	65	69	65	68	3	12	4,6	21,4
Men	7 434	7 430	7 408	7 511	7 577	66	143	0,9	1,9
Employee	6 182	6 191	6 164	6 262	6 335	73	153	1,2	2,5
Employer	583	553	580	555	556	1	-27	0,2	-4,6
Own-account worker	627	649	636	647	650	3	23	0,5	3,7
Unpaid household member	43	37	28	47	36	-11	-7	-23,4	-16,3

For all values of 10 000 or lower the sample size is too small for reliable estimates.
Due to rounding, numbers do not necessarily add up to totals.

Table 3.7: Employed by sex and usual hours of work – South Africa

	Oct-Dec 2010	Jan-Mar 2011	Apr-Jun 2011	Jul-Sep 2011	Oct-Dec 2011	Qtr-to-Qtr change	Year-on-year change	Qtr-to-Qtr change	Year-on- year change
	Thousand	Thousand	Thousand	Thousand	Thousand	Thousand	Thousand	Per cent	Per cent
Both sexes	13 132	13 118	13 125	13 318	13 497	179	365	1,3	2,8
Working less than 15 hours per week	246	220	234	227	238	11	-8	4,8	-3,3
Working 15-29 hours per week	783	768	744	779	774	-5	-9	-0,6	-1,1
Working 30-39 hours per week	974	920	963	957	932	-25	-42	-2,6	-4,3
Working 40-45 hours per week	7 082	7 168	7 177	7 389	7 424	35	342	0,5	4,8
Working more than 45 hours per week	4 047	4 044	4 008	3 966	4 129	163	82	4,1	2,0
Women	5 698	5 688	5 717	5 807	5 920	113	222	1,9	3,9
Working less than 15 hours per week	143	134	129	140	143	3	0	2,1	0,0
Working 15-29 hours per week	498	498	485	485	501	16	3	3,3	0,6
Working 30-39 hours per week	596	565	583	586	576	-10	-20	-1,7	-3,4
Working 40-45 hours per week	3 076	3 123	3 102	3 232	3 264	32	188	1,0	6,1
Working more than 45 hours per week	1 384	1 369	1 419	1 364	1 436	72	52	5,3	3,8
Men	7 434	7 430	7 408	7 511	7 577	66	143	0,9	1,9
Working less than 15 hours per week	103	86	106	87	95	8	-8	9,2	-7,8
Working 15-29 hours per week	285	269	258	293	273	-20	-12	-6,8	-4,2
Working 30-39 hours per week	377	355	380	371	356	-15	-21	-4,0	-5,6
Working 40-45 hours per week	4 006	4 045	4 075	4 157	4 159	2	153	0,0	3,8
Working more than 45 hours per week	2 663	2 675	2 589	2 602	2 693	91	30	3,5	1,1

For all values of 10 000 or lower the sample size is too small for reliable estimates.
Due to rounding, numbers do not necessarily add up to totals.

Table 3.8: Conditions of employment – South Africa

	Oct-Dec 2010	Jan-Mar 2011	Apr-Jun 2011	Jul-Sep 2011	Oct-Dec 2011	Qtr-to-Qtr change	Year-on- year change	Qtr-to-Qtr change	Year-on- year change
	Thousand	Thousand	Thousand	Thousand	Thousand	Thousand	Thousand	Per cent	Per cent
Pension/retirement fund contribution									
Both sexes									
Yes	11 039	11 061	11 056	11 263	11 460	197	421	1,7	3,8
No	5 112	5 208	5 188	5 355	5 537	182	425	3,4	8,3
Don't know	5 795	5 721	5 721	5 740	5 769	29	-26	0,5	-0,4
	132	131	146	168	154	-14	22	-8,3	16,7
Women									
Yes	4 857	4 870	4 892	5 001	5 125	124	268	2,5	5,5
No	2 158	2 123	2 119	2 246	2 315	69	157	3,1	7,3
Don't know	2 648	2 692	2 707	2 688	2 743	55	95	2,0	3,6
	52	55	66	68	66	-2	14	-2,9	26,9
Men									
Yes	6 182	6 191	6 164	6 262	6 335	73	153	1,2	2,5
No	2 954	3 085	3 070	3 110	3 222	112	268	3,6	9,1
Don't know	3 148	3 029	3 014	3 052	3 025	-27	-123	-0,9	-3,9
	80	76	80	101	88	-13	8	-12,9	10,0
Entitled to any paid leave									
Both sexes									
Yes	11 039	11 061	11 056	11 263	11 460	197	421	1,7	3,8
No	7 067	7 159	7 222	7 444	7 631	187	564	2,5	8,0
Don't know	3 877	3 798	3 741	3 691	3 712	21	-165	0,6	-4,3
	96	104	93	129	118	-11	22	-8,5	22,9
Women									
Yes	4 857	4 870	4 892	5 001	5 125	124	268	2,5	5,5
No	3 051	3 052	3 093	3 256	3 343	87	292	2,7	9,6
Don't know	1 775	1 778	1 762	1 698	1 741	43	-34	2,5	-1,9
	31	39	37	47	41	-6	10	-12,8	32,3
Men									
Yes	6 182	6 191	6 164	6 262	6 335	73	153	1,2	2,5
No	4 015	4 107	4 129	4 187	4 288	101	273	2,4	6,8
Don't know	2 102	2 020	1 979	1 993	1 971	-22	-131	-1,1	-6,2
	65	64	56	82	76	-6	11	-7,3	16,9

For all values of 10 000 or lower the sample size is too small for reliable estimates.
Due to rounding, numbers do not necessarily add up to totals.

Table 3.8: Conditions of employment – South Africa (continued)

	Oct-Dec 2010	Jan-Mar 2011	Apr-Jun 2011	Jul-Sep 2011	Oct-Dec 2011	Qtr-to-Qtr change	Year-on- year change	Qtr-to-Qtr change	Year-on- year change
	Thousand	Thousand	Thousand	Thousand	Thousand	Thousand	Thousand	Per cent	Per cent
Entitled to paid sick leave									
Both sexes									
Yes	11 039	11 061	11 056	11 263	11 460	197	421	1,7	3,8
No	7 152	7 283	7 388	7 705	7 846	141	694	1,8	9,7
	3 887	3 777	3 668	3 558	3 614	56	-273	1,6	-7,0
Women									
Yes	4 857	4 870	4 892	5 001	5 125	124	268	2,5	5,5
No	3 118	3 144	3 202	3 394	3 471	77	353	2,3	11,3
	1 739	1 726	1 690	1 607	1 654	47	-85	2,9	-4,9
Men									
Yes	6 182	6 191	6 164	6 262	6 335	73	153	1,2	2,5
No	4 034	4 140	4 186	4 311	4 374	63	340	1,5	8,4
	2 148	2 051	1 978	1 951	1 961	10	-187	0,5	-8,7
Entitled to maternity/paternity leave									
Both sexes									
Yes	11 039	11 061	11 056	11 263	11 460	197	421	1,7	3,8
No	5 875	5 852	5 907	6 090	6 415	325	540	5,3	9,2
	5 164	5 208	5 149	5 173	5 045	-128	-119	-2,5	-2,3
Women									
Yes	4 857	4 870	4 892	5 001	5 125	124	268	2,5	5,5
No	2 734	2 644	2 701	2 789	2 961	172	227	6,2	8,3
	2 123	2 226	2 191	2 212	2 163	-49	40	-2,2	1,9
Men									
Yes	6 182	6 191	6 164	6 262	6 335	73	153	1,2	2,5
No	3 141	3 209	3 206	3 300	3 454	154	313	4,7	10,0
	3 041	2 982	2 958	2 962	2 881	-81	-160	-2,7	-5,3

For all values of 10 000 or lower the sample size is too small for reliable estimates.
Due to rounding, numbers do not necessarily add up to totals.

Table 3.8: Conditions of employment – South Africa (continued)

	Oct-Dec 2010	Jan-Mar 2011	Apr-Jun 2011	Jul-Sep 2011	Oct-Dec 2011	Qtr-to-Qtr change	Year-on- year change	Qtr-to-Qtr change	Year-on- year change
	Thousand	Thousand	Thousand	Thousand	Thousand	Thousand	Thousand	Per cent	Per cent
UIF contribution									
Both sexes									
Yes	11 039	11 061	11 056	11 263	11 460	197	421	1,7	3,8
No	6 150	6 288	6 265	6 479	6 563	84	413	1,3	6,7
Don't know	4 781	4 666	4 687	4 670	4 748	78	-33	1,7	-0,7
	108	107	105	114	148	34	40	29,8	37,0
Women									
Yes	4 857	4 870	4 892	5 001	5 125	124	268	2,5	5,5
No	2 505	2 557	2 563	2 667	2 688	21	183	0,8	7,3
Don't know	2 302	2 262	2 280	2 289	2 363	74	61	3,2	2,6
	50	51	49	46	73	27	23	58,7	46,0
Men									
Yes	6 182	6 191	6 164	6 262	6 335	73	153	1,2	2,5
No	3 645	3 730	3 702	3 812	3 875	63	230	1,7	6,3
Don't know	2 479	2 404	2 407	2 381	2 385	4	-94	0,2	-3,8
	58	57	56	68	75	7	17	10,3	29,3
Medical aid benefits									
Both sexes									
Yes	11 039	11 061	11 056	11 263	11 460	197	421	1,7	3,8
No	3 584	3 553	3 465	3 523	3 689	166	105	4,7	2,9
Don't know	7 387	7 441	7 522	7 648	7 672	24	285	0,3	3,9
	69	67	69	92	99	7	30	7,6	43,5
Women									
Yes	4 857	4 870	4 892	5 001	5 125	124	268	2,5	5,5
No	1 571	1 523	1 506	1 541	1 613	72	42	4,7	2,7
Don't know	3 258	3 320	3 360	3 420	3 458	38	200	1,1	6,1
	29	26	26	40	54	14	25	35,0	86,2
Men									
Yes	6 182	6 191	6 164	6 262	6 335	73	153	1,2	2,5
No	2 013	2 029	1 959	1 982	2 075	93	62	4,7	3,1
Don't know	4 129	4 121	4 162	4 228	4 214	-14	85	-0,3	2,1
	40	41	43	52	46	-6	6	-11,5	15,0

For all values of 10 000 or lower the sample size is too small for reliable estimates.
Due to rounding, numbers do not necessarily add up to totals.

Table 3.8: Conditions of employment – South Africa (continued)

	Oct-Dec 2010	Jan-Mar 2011	Apr-Jun 2011	Jul-Sep 2011	Oct-Dec 2011	Qtr-to-Qtr change	Year-on- year change	Qtr-to-Qtr change	Year-on- year change
	Thousand	Thousand	Thousand	Thousand	Thousand	Thousand	Thousand	Per cent	Per cent
Income tax (PAYE/ SITE) deduction									
Both sexes									
Yes	11 039	11 061	11 056	11 263	11 460	197	421	1,7	3,8
No	5 887	6 006	6 046	6 338	6 527	189	640	3,0	10,9
Don't know	5 014	4 923	4 877	4 784	4 781	-3	-233	-0,1	-4,6
	138	131	132	141	152	11	14	7,8	10,1
Women									
Yes	4 857	4 870	4 892	5 001	5 125	124	268	2,5	5,5
No	2 447	2 457	2 490	2 654	2 742	88	295	3,3	12,1
Don't know	2 363	2 370	2 354	2 293	2 323	30	-40	1,3	-1,7
	47	43	48	55	60	5	13	9,1	27,7
Men									
Yes	6 182	6 191	6 164	6 262	6 335	73	153	1,2	2,5
No	3 439	3 550	3 556	3 684	3 785	101	346	2,7	10,1
Don't know	2 651	2 554	2 524	2 492	2 458	-34	-193	-1,4	-7,3
	91	88	84	86	93	7	2	8,1	2,2
Condition of employment									
Both sexes									
Written contract	11 039	11 061	11 056	11 263	11 460	197	421	1,7	3,8
Verbal agreement	8 669	8 661	8 791	8 993	9 149	156	480	1,7	5,5
	2 370	2 400	2 265	2 270	2 311	41	-59	1,8	-2,5
Women									
Written contract	4 857	4 870	4 892	5 001	5 125	124	268	2,5	5,5
Verbal agreement	3 746	3 723	3 829	3 930	4 035	105	289	2,7	7,7
	1 111	1 147	1 064	1 071	1 090	19	-21	1,8	-1,9
Men									
Written contract	6 182	6 191	6 164	6 262	6 335	73	153	1,2	2,5
Verbal agreement	4 923	4 938	4 963	5 063	5 114	51	191	1,0	3,9
	1 259	1 253	1 201	1 199	1 221	22	-38	1,8	-3,0

For all values of 10 000 or lower the sample size is too small for reliable estimates.
Due to rounding, numbers do not necessarily add up to totals.

Table 3.8: Conditions of employment – South Africa (continued)

	Oct-Dec 2010	Jan-Mar 2011	Apr-Jun 2011	Jul-Sep 2011	Oct-Dec 2011	Qtr-to-Qtr change	Year-on- year change	Qtr-to-Qtr change	Year-on- year change
	Thousand	Thousand	Thousand	Thousand	Thousand	Thousand	Thousand	Per cent	Per cent
Nature of contract/agreement (Both sexes)									
Both sexes	11 039	11 061	11 056	11 263	11 460	197	421	1,7	3,8
Limited duration	1 325	1 252	1 407	1 498	1 495	-3	170	-0,2	12,8
Permanent nature	7 176	7 225	7 088	7 208	7 384	176	208	2,4	2,9
Unspecified duration	2 539	2 583	2 561	2 557	2 581	24	42	0,9	1,7
Women	4 857	4 870	4 892	5 001	5 125	124	268	2,5	5,5
Limited duration	582	571	622	646	685	39	103	6,0	17,7
Permanent nature	3 069	3 080	3 043	3 138	3 225	87	156	2,8	5,1
Unspecified duration	1 206	1 219	1 227	1 217	1 215	-2	9	-0,2	0,7
Men	6 182	6 191	6 164	6 262	6 335	73	153	1,2	2,5
Limited duration	743	681	785	852	810	-42	67	-4,9	9,0
Permanent nature	4 106	4 145	4 045	4 070	4 159	89	53	2,2	1,3
Unspecified duration	1 332	1 364	1 334	1 340	1 366	26	34	1,9	2,6
Trade union membership									
Both sexes	11 039	11 061	11 056	11 263	11 460	197	421	1,7	3,8
Yes	3 311	3 194	3 185	3 265	3 363	98	52	3,0	1,6
No	7 464	7 617	7 661	7 772	7 876	104	412	1,3	5,5
Don't know	264	249	210	226	221	-5	-43	-2,2	-16,3
Women	4 857	4 870	4 892	5 001	5 125	124	268	2,5	5,5
Yes	1 345	1 283	1 271	1 334	1 368	34	23	2,5	1,7
No	3 401	3 476	3 553	3 578	3 665	87	264	2,4	7,8
Don't know	111	110	68	90	92	2	-19	2,2	-17,1
Men	6 182	6 191	6 164	6 262	6 335	73	153	1,2	2,5
Yes	1 966	1 911	1 914	1 932	1 995	63	29	3,3	1,5
No	4 063	4 141	4 108	4 194	4 212	18	149	0,4	3,7
Don't know	153	139	142	136	128	-8	-25	-5,9	-16,3

For all values of 10 000 or lower the sample size is too small for reliable estimates.
Due to rounding, numbers do not necessarily add up to totals.

Table 3.8: Conditions of employment – South Africa (concluded)

	Oct-Dec 2010	Jan-Mar 2011	Apr-Jun 2011	Jul-Sep 2011	Oct-Dec 2011	Qtr-to-Qtr change	Year-on- year change	Qtr-to-Qtr change	Year-on- year change
	Thousand	Thousand	Thousand	Thousand	Thousand	Thousand	Thousand	Per cent	Per cent
How annual salary increment is negotiated									
Both sexes	11 039	11 061	11 056	11 263	11 460	197	421	1,7	3,8
Individual and employer	1 617	1 682	1 660	1 542	1 442	-100	-175	-6,5	-10,8
Union and employer	2 533	2 480	2 425	2 491	2 551	60	18	2,4	0,7
Bargaining council	1 072	1 073	1 057	1 052	1 031	-21	-41	-2,0	-3,8
Employer only	5 075	5 179	5 240	5 418	5 779	361	704	6,7	13,9
No regular increment	669	562	627	710	593	-117	-76	-16,5	-11,4
Other	73	85	47	49	65	16	-8	32,7	-11,0
Women	4 857	4 870	4 892	5 001	5 125	124	268	2,5	5,5
Individual and employer	681	744	719	661	634	-27	-47	-4,1	-6,9
Union and employer	992	955	913	996	989	-7	-3	-0,7	-0,3
Bargaining council	481	492	496	500	506	6	25	1,2	5,2
Employer only	2 374	2 371	2 453	2 502	2 671	169	297	6,8	12,5
No regular increment	297	270	295	321	296	-25	-1	-7,8	-0,3
Other	32	37	16	21	28	7	-4	33,3	-12,5
Men	6 182	6 191	6 164	6 262	6 335	73	153	1,2	2,5
Individual and employer	935	937	941	881	807	-74	-128	-8,4	-13,7
Union and employer	1 541	1 525	1 513	1 495	1 561	66	20	4,4	1,3
Bargaining council	591	580	561	553	525	-28	-66	-5,1	-11,2
Employer only	2 701	2 808	2 787	2 916	3 108	192	407	6,6	15,1
No regular increment	372	293	332	389	297	-92	-75	-23,7	-20,2
Other	42	48	31	28	37	9	-5	32,1	-11,9

For all values of 10 000 or lower the sample size is too small for reliable estimates.
Due to rounding, numbers do not necessarily add up to totals.

Table 3.9: Time-related underemployment – South Africa

	Oct-Dec 2010	Jan-Mar 2011	Apr-Jun 2011	Jul-Sep 2011	Oct-Dec 2011	Qtr-to-Qtr change Thousand	Year-on- year change Thousand	Qtr-to-Qtr change Per cent	Year-on- year change Per cent
	Thousand	Thousand	Thousand	Thousand	Thousand	Thousand	Thousand	Per cent	Per cent
Both sexes	496	525	519	490	521	31	25	6,3	5,0
Women	296	327	304	297	306	9	10	3,0	3,4
Men	200	198	215	193	215	22	15	11,4	7,5
As percentage of the labour force (Both sexes)	2,9	3,0	2,9	2,8	2,9	0,1	0,0		
Women	3,8	4,1	3,8	3,7	3,8	0,1	0,0		
Men	2,1	2,1	2,2	2,0	2,2	0,2	0,1		
As percentage of total employment (Both sexes)	3,8	4,0	4,0	3,7	3,9	0,2	0,1		
Women	5,2	5,7	5,3	5,1	5,2	0,1	0,0		
Men	2,7	2,7	2,9	2,6	2,8	0,2	0,1		
Industry	496	525	519	490	521	31	25	6,3	5,0
Agriculture	11	13	6	10	11	1	0	10,0	0,0
Mining	0	.	0	0	1	1	1	.	.
Manufacturing	26	27	39	37	50	13	24	35,1	92,3
Utilities									
Construction	53	45	56	55	48	-7	-5	-12,7	-9,4
Trade	106	101	106	83	98	15	-8	18,1	-7,5
Transport	10	13	15	10	10	0	0	0,0	0,0
Finance	30	33	31	45	35	-10	5	-22,2	16,7
Community and social services	78	68	68	74	77	3	-1	4,1	-1,3
Private households	181	225	196	176	191	15	10	8,5	5,5
Occupation	496	525	519	490	521	31	25	6,3	5,0
Manager	11	14	11	18	7	-11	-4	-61,1	-36,4
Professional	5	5	1	7	6	-1	1	-14,3	20,0
Technician	27	28	29	26	29	3	2	11,5	7,4
Clerk	18	20	20	20	14	-6	-4	-30,0	-22,2
Sales and services	65	51	46	43	48	5	-17	11,6	-26,2
Skilled agriculture		4	1	3	4	1	4	33,3	.
Craft and related trade	56	46	74	62	72	10	16	16,1	28,6
Plant and machine operator	6	12	14	10	14	4	8	40,0	133,3
Elementary	171	177	180	168	190	22	19	13,1	11,1
Domestic worker	136	167	142	133	138	5	2	3,8	1,5

For all values of 10 000 or lower the sample size is too small for reliable estimates.

Due to rounding, numbers do not necessarily add up to totals.

Table 4: Characteristics of the unemployed – South Africa

	Oct-Dec 2010	Jan-Mar 2011	Apr-Jun 2011	Jul-Sep 2011	Oct-Dec 2011	Qtr-to-Qtr change	Year-on- year change	Qtr-to- Qtr change	Year-on- year change
	Thousand	Thousand	Thousand	Thousand	Thousand	Thousand	Thousand	Per cent	Per cent
Unemployed	4 137	4 364	4 538	4 442	4 244	-198	107	-4,5	2,6
Job losers	1 292	1 325	1 359	1 339	1 288	-51	-4	-3,8	-0,3
Job leavers	253	270	255	264	260	-4	7	-1,5	2,8
New entrants	1 782	1 896	2 036	1 973	1 850	-123	68	-6,2	3,8
Re-entrants	171	189	188	218	236	18	65	8,3	38,0
Other	639	684	700	648	610	-38	-29	-5,9	-4,5
Unemployed	4 137	4 364	4 538	4 442	4 244	-198	107	-4,5	2,6
Long-term unemployment (1 year and more)	2 815	2 979	3 093	3 029	2 866	-163	51	-5,4	1,8
Short-term unemployment (less than 1 year)	1 322	1 385	1 444	1 413	1 378	-35	56	-2,5	4,2
Long-term unemployment (%)									
Proportion of the labour force	16,3	17,0	17,5	17,1	16,2	-0,9	-0,1		
Proportion of the unemployed	68,0	68,3	68,2	68,2	67,5	-0,7	-0,5		
Those who have worked in the past 5 years									
Previous occupation	1 715	1 784	1 802	1 821	1 784	-37	69	-2,0	4,0
Manager	32	37	41	45	45		13	0,0	40,6
Professional	23	34	31	43	39	-4	16	-9,3	69,6
Technician	90	84	73	114	94	-20	4	-17,5	4,4
Clerk	214	213	205	222	218	-4	4	-1,8	1,9
Sales and services	262	264	297	275	262	-13	0	-4,7	0,0
Skilled agriculture	5	10	10	6	6	0	1	0,0	20,0
Craft and related trade	298	313	303	292	293	1	-5	0,3	-1,7
Plant and machine operator	133	143	123	155	154	-1	21	-0,6	15,8
Elementary	522	522	582	518	512	-6	-10	-1,2	-1,9
Domestic worker	136	164	136	150	161	11	25	7,3	18,4
Other			0						

For all values of 10 000 or lower the sample size is too small for reliable estimates.
Due to rounding, numbers do not necessarily add up to totals.

Table 4: Characteristics of the unemployed – South Africa (concluded)

	Oct-Dec 2010	Jan-Mar 2011	Apr-Jun 2011	Jul-Sep 2011	Oct-Dec 2011	Qtr-to-Qtr change	Year-on- year change	Qtr-to- Qtr change	Year- on- year change
	Thousand	Thousand	Thousand	Thousand	Thousand	Thousand	Thousand	Per cent	Per cent
Previous industry	1 715	1 784	1 802	1 821	1 784	-37	69	-2,0	4,0
Agriculture	83	98	108	81	80	-1	-3	-1,2	-3,6
Mining	37	28	30	31	24	-7	-13	-22,6	-35,1
Manufacturing	250	249	242	264	251	-13	1	-4,9	0,4
Utilities	8	12	8	7	12	5	4	71,4	50,0
Construction	275	289	276	278	256	-22	-19	-7,9	-6,9
Trade	438	414	450	420	440	20	2	4,8	0,5
Transport	65	77	95	97	94	-3	29	-3,1	44,6
Finance	214	215	222	234	223	-11	9	-4,7	4,2
Community and social services	162	194	183	204	204	0	42	0,0	25,9
Private households	184	209	187	206	199	-7	15	-3,4	8,2
Other	.	.	1	.	1

For all values of 10 000 or lower the sample size is too small for reliable estimates.
Due to rounding, numbers do not necessarily add up to totals.

Table 5: Characteristics of the not economically active – South Africa

	Oct-Dec 2010	Jan-Mar 2011	Apr-Jun 2011	Jul-Sep 2011	Oct-Dec 2011	Qtr-to-Qtr change	Year-on-year change	Qtr-to-Qtr change	Year-on- year change
	Thousand	Thousand	Thousand	Thousand	Thousand	Thousand	Thousand	Per cent	Per cent
Not economically active	14 924	14 832	14 772	14 795	14 929	134	5	0,9	0,0
Student	6 251	6 083	6 182	6 184	6 235	51	-16	0,8	-0,3
Home-maker	2 929	2 882	2 833	2 842	2 836	-6	-93	-0,2	-3,2
Illness/disability	1 760	1 708	1 670	1 618	1 585	-33	-175	-2,0	-9,9
Too old/young to work	1 149	1 216	1 197	1 249	1 215	-34	66	-2,7	5,7
Discouraged work seekers	2 150	2 223	2 207	2 204	2 315	111	165	5,0	7,7
Other	686	719	684	698	743	45	57	6,4	8,3
Inactivity rate by age (Both sexes)	46,4	45,9	45,5	45,4	45,7	0,3	-0,7		
15-24 yrs	75,6	74,8	74,5	74,7	75,1	0,4	-0,5		
25-54 yrs	28,4	27,9	27,7	27,5	27,8	0,3	-0,6		
55-64 yrs	59,8	60,7	59,3	59,5	58,6	-0,9	-1,2		
Inactivity rate by age (Women)	53,2	52,4	52,0	51,8	52,1	0,3	-1,1		
15-24 yrs	77,6	76,2	76,1	77,2	77,3	0,1	-0,3		
25-54 yrs	38,0	37,1	36,5	36,1	36,6	0,5	-1,4		
55-64 yrs	68,8	69,9	69,6	67,9	66,8	-1,1	-2,0		
Inactivity rate by age (Men)	39,1	39,0	38,7	38,7	38,9	0,2	-0,2		
15-24 yrs	73,5	73,4	72,9	72,2	73,0	0,8	-0,5		
25-54 yrs	18,0	17,9	18,2	18,1	18,3	0,2	0,3		
55-64 yrs	49,0	49,7	47,0	49,5	48,7	-0,8	-0,3		

Due to rounding, numbers do not necessarily add up to totals.

Table 6: Socio-demographic characteristics – South Africa

	Oct-Dec 2010	Jan-Mar 2011	Apr-Jun 2011	Jul-Sep 2011	Oct-Dec 2011	Qtr-to-Qtr change	Year-on- year change	Qtr-to- Qtr change	Year-on- year change
	Thousand	Thousand	Thousand	Thousand	Thousand	Thousand	Thousand	Per cent	Per cent
Age group of the employed	13 132	13 118	13 125	13 318	13 497	179	365	1,3	2,8
15-24 yrs	1 271	1 304	1 318	1 297	1 306	9	35	0,7	2,8
25-34 yrs	4 379	4 333	4 314	4 417	4 522	105	143	2,4	3,3
35-44 yrs	3 806	3 847	3 800	3 847	3 921	74	115	1,9	3,0
45-54 yrs	2 545	2 519	2 529	2 596	2 553	-43	8	-1,7	0,3
55-64 yrs	1 130	1 116	1 164	1 162	1 196	34	66	2,9	5,8
Age group of the unemployed	4 137	4 364	4 538	4 442	4 244	-198	107	-4,5	2,6
15-24 yrs	1 240	1 289	1 309	1 319	1 267	-52	27	-3,9	2,2
25-34 yrs	1 738	1 868	1 933	1 851	1 737	-114	-1	-6,2	-0,1
35-44 yrs	758	780	861	857	813	-44	55	-5,1	7,3
45-54 yrs	324	356	364	341	349	8	25	2,3	7,7
55-64 yrs	76	71	72	75	79	4	3	5,3	3,9
Age group of the not economically active	14 924	14 832	14 772	14 795	14 929	134	5	0,9	0,0
15-24 yrs	7 762	7 698	7 682	7 711	7 770	59	8	0,8	0,1
25-34 yrs	2 487	2 437	2 425	2 439	2 481	42	-6	1,7	-0,2
35-44 yrs	1 494	1 477	1 490	1 493	1 508	15	14	1,0	0,9
45-54 yrs	1 387	1 386	1 372	1 331	1 368	37	-19	2,8	-1,4
55-64 yrs	1 795	1 834	1 803	1 821	1 802	-19	7	-1,0	0,4
Highest level of education of the employed	13 132	13 118	13 125	13 318	13 497	179	365	1,3	2,8
No schooling	377	337	331	360	350	-10	-27	-2,8	-7,2
Less than primary completed	1 056	1 063	1 052	1 151	1 090	-61	34	-5,3	3,2
Primary completed	626	587	607	590	590	0	-36	0,0	-5,8
Secondary not completed	4 333	4 416	4 313	4 455	4 523	68	190	1,5	4,4
Secondary completed	4 035	3 960	4 014	3 957	4 032	75	-3	1,9	-0,1
Tertiary	2 530	2 602	2 643	2 642	2 732	90	202	3,4	8,0
Other	174	154	166	163	179	16	5	9,8	2,9

Due to rounding, numbers do not necessarily add up to totals.

Table 6: Socio-demographic characteristics – South Africa (continued)

	Oct-Dec 2010	Jan-Mar 2011	Apr-Jun 2011	Jul-Sep 2011	Oct-Dec 2011	Qtr-to-Qtr change	Year-on- year change	Qtr-to-Qtr change	Year-on- year change
	Thousand	Thousand	Thousand	Thousand	Thousand	Thousand	Thousand	Per cent	Per cent
Highest level of education of the unemployed	4 137	4 364	4 538	4 442	4 244	-198	107	-4,5	2,6
No schooling	83	68	71	81	67	-14	-16	-17,3	-19,3
Less than primary completed	342	306	316	302	287	-15	-55	-5,0	-16,1
Primary completed	174	200	195	205	205	0	31	0,0	17,8
Secondary not completed	1 872	2 023	2 096	2 085	2 014	-71	142	-3,4	7,6
Secondary completed	1 403	1 504	1 580	1 476	1 371	-105	-32	-7,1	-2,3
Tertiary	234	241	256	260	266	6	32	2,3	13,7
Other	30	22	24	34	33	-1	3	-2,9	10,0
Highest level of education of the not economically active	14 924	14 832	14 772	14 795	14 929	134	5	0,9	0,0
No schooling	821	834	845	813	773	-40	-48	-4,9	-5,8
Less than primary completed	2 115	1 888	1 901	1 885	1 899	14	-216	0,7	-10,2
Primary completed	1 246	1 074	1 114	1 147	1 174	27	-72	2,4	-5,8
Secondary not completed	7 754	7 773	7 875	7 876	8 019	143	265	1,8	3,4
Secondary completed	2 450	2 710	2 493	2 526	2 532	6	82	0,2	3,3
Tertiary	412	431	435	420	416	-4	4	-1,0	1,0
Other	126	121	109	128	116	-12	-10	-9,4	-7,9
Current marital status of the employed	13 132	13 118	13 125	13 318	13 497	179	365	1,3	2,8
Married	5 552	5 470	5 475	5 629	5 639	10	87	0,2	1,6
Living together like husband and wife	1 469	1 516	1 502	1 486	1 498	12	29	0,8	2,0
Widow/widower	442	416	437	420	428	8	-14	1,9	-3,2
Divorced or separated	468	455	454	431	469	38	1	8,8	0,2
Never married	5 201	5 262	5 257	5 353	5 463	110	262	2,1	5,0
Current marital status of the unemployed	4 137	4 364	4 538	4 442	4 244	-198	107	-4,5	2,6
Married	684	717	736	727	719	-8	35	-1,1	5,1
Living together like husband and wife	431	412	447	449	418	-31	-13	-6,9	-3,0
Widow/widower	51	50	49	63	63	0	12	0,0	23,5
Divorced or separated	53	72	79	81	79	-2	26	-2,5	49,1
Never married	2 918	3 112	3 226	3 123	2 964	-159	46	-5,1	1,6

Due to rounding, numbers do not necessarily add up to totals.

Table 6: Socio-demographic characteristics – South Africa (concluded)

	Oct-Dec 2010	Jan-Mar 2011	Apr-Jun 2011	Jul-Sep 2011	Oct-Dec 2011	Qtr-to-Qtr change	Year-on- year change	Qtr-to-Qtr change	Year-on- year change
	Thousand	Thousand	Thousand	Thousand	Thousand	Thousand	Thousand	Per cent	Per cent
Current marital status of the not economically active	14 924	14 832	14 772	14 795	14 929	134	5	0,9	0,0
Married	2 957	3 011	2 979	2 921	2 913	-8	-44	-0,3	-1,5
Living together like husband and wife	734	718	676	675	731	56	-3	8,3	-0,4
Widow/widower	646	673	662	652	659	7	13	1,1	2,0
Divorced or separated	218	229	231	237	246	9	28	3,8	12,8
Never married	10 370	10 201	10 224	10 309	10 380	71	10	0,7	0,1

Due to rounding, numbers do not necessarily add up to totals.

Table 7: Involvement in non-market activities and labour market status by province

	Oct-Dec 2010	Jan-Mar 2011	Apr-Jun 2011	Jul-Sep 2011	Oct-Dec 2011	Qtr-to-Qtr change	Year-on- year change	Qtr-to- Qtr change	Year- on- year change
	Thousand	Thousand	Thousand	Thousand	Thousand	Thousand	Thousand	Per cent	Per cent
South Africa									
Subsistence farming	1 909	2 285	1 740	1 921	1 796	-125	-113	-6,5	-5,9
Fetching water or collecting wood/dung	4 283	3 998	4 130	4 642	4 144	-498	-139	-10,7	-3,2
Produce other goods for household use	166	182	169	457	161	-296	-5	-64,8	-3,0
Construction or major repairs to own or household'	332	259	288	606	330	-276	-2	-45,5	-0,6
Hunting or fishing for household use	54	38	37	320	42	-278	-12	-86,9	-22,2
Involvement in at least one activity	5 331	5 382	5 155	6 254	5 152	-1 102	-179	-17,6	-3,4
Employed	1 067	1 103	1 051	1 515	1 146	-369	79	-24,4	7,4
Unemployed	613	602	642	759	596	-163	-17	-21,5	-2,8
Not economically active	3 651	3 677	3 462	3 980	3 411	-569	-240	-14,3	-6,6
Eastern Cape									
Subsistence farming	573	711	508	493	521	28	-52	5,7	-9,1
Fetching water or collecting wood/dung	1 030	982	933	1 062	1 003	-59	-27	-5,6	-2,6
Produce other goods for household use	12	4	7	59	18	-41	6	-69,5	50,0
Construction or major repairs to own or household'	58	85	105	142	118	-24	60	-16,9	103,4
Hunting or fishing for household use	3	4	11	41	5	-36	2	-87,8	66,7
Involvement in at least one activity	1 289	1 357	1 210	1 334	1 242	-92	-47	-6,9	-3,6
Employed	208	187	174	215	201	-14	-7	-6,5	-3,4
Unemployed	118	137	136	132	109	-23	-9	-17,4	-7,6
Not economically active	963	1 033	900	987	933	-54	-30	-5,5	-3,1
Northern Cape									
Subsistence farming	9	6	4	12	5	-7	-4	-58,3	-44,4
Fetching water or collecting wood/dung	102	90	75	74	66	-8	-36	-10,8	-35,3
Produce other goods for household use			1	10		-10		-100,0	
Construction or major repairs to own or household'	1		1	8	1	-7		-87,5	0,0
Hunting or fishing for household use	4			9	1	-8	-3	-88,9	-75,0
Involvement in at least one activity	105	93	79	98	69	-29	-36	-29,6	-34,3
Employed	22	11	10	17	12	-5	-10	-29,4	-45,5
Unemployed	16	18	9	19	14	-5	-2	-26,3	-12,5
Not economically active	67	63	59	61	44	-17	-23	-27,9	-34,3

For all values of 10 000 or lower the sample size is too small for reliable estimates.
Due to rounding, numbers do not necessarily add up to totals.

Table 7: Involvement in non-market activities and labour market status by province (continued)

	Oct-Dec 2010	Jan-Mar 2011	Apr-Jun 2011	Jul-Sep 2011	Oct-Dec 2011	Qtr-to-Qtr change	Year-on- year change	Qtr-to- Qtr change	Year- on-year change
	Thousand	Thousand	Thousand	Thousand	Thousand	Thousand	Thousand	Per cent	Per cent
Free State									
Subsistence farming	118	106	114	85	84	-1	-34	-1,2	-28,8
Fetching water or collecting wood/dung	35	34	52	80	21	-59	-14	-73,8	-40,0
Produce other goods for household use	5	8	10	27	3	-24	-2	-88,9	-40,0
Construction or major repairs to own or household'	12	19	19	36	10	-26	-2	-72,2	-16,7
Hunting or fishing for household use	24	19	13	29	8	-21	-16	-72,4	-66,7
Involvement in at least one activity	156	155	174	192	106	-86	-50	-44,8	-32,1
Employed	62	69	71	74	48	-26	-14	-35,1	-22,6
Unemployed	23	28	27	34	13	-21	-10	-61,8	-43,5
Not economically active	71	57	77	84	45	-39	-26	-46,4	-36,6
KwaZulu-Natal									
Subsistence farming	749	853	631	685	742	57	-7	8,3	-0,9
Fetching water or collecting wood/dung	1 294	1 269	1 308	1 396	1 269	-127	-25	-9,1	-1,9
Produce other goods for household use	58	28	42	106	47	-59	-11	-55,7	-19,0
Construction or major repairs to own or household'	194	89	120	213	133	-80	-61	-37,6	-31,4
Hunting or fishing for household use	18	10	10	57	11	-46	-7	-80,7	-38,9
Involvement in at least one activity	1 608	1 684	1 604	1 831	1 605	-226	-3	-12,3	-0,2
Employed	332	378	367	459	390	-69	58	-15,0	17,5
Unemployed	171	141	168	167	209	42	38	25,1	22,2
Not economically active	1 106	1 164	1 068	1 206	1 005	-201	-101	-16,7	-9,1
North West									
Subsistence farming	75	83	89	106	75	-31		-29,2	0,0
Fetching water or collecting wood/dung	321	294	294	333	232	-101	-89	-30,3	-27,7
Produce other goods for household use	2	2	4	18	1	-17	-1	-94,4	-50,0
Construction or major repairs to own or household'	5	4	2	11	1	-10	-4	-90,9	-80,0
Hunting or fishing for household use	3	1	1	23		-23	-3	-100,0	-100,0
Involvement in at least one activity	350	333	337	425	274	-151	-76	-35,5	-21,7
Employed	52	50	53	85	39	-46	-13	-54,1	-25,0
Unemployed	76	60	74	73	41	-32	-35	-43,8	-46,1
Not economically active	222	223	210	266	193	-73	-29	-27,4	-13,1

For all values of 10 000 or lower the sample size is too small for reliable estimates.
Due to rounding, numbers do not necessarily add up to totals.

Table 7: Involvement in non-market activities and labour market status by province (concluded)

	Oct-Dec 2010	Jan-Mar 2011	Apr-Jun 2011	Jul-Sep 2011	Oct-Dec 2011	Qtr-to-Qtr change	Year-on- year change	Qtr-to- Qtr change	Year- on- year change
	Thousand	Thousand	Thousand	Thousand	Thousand	Thousand	Thousand	Per cent	Per cent
Gauteng									
Subsistence farming	28	21	2	115	34	-81	6	-70.4	21.4
Fetching water or collecting wood/dung	27	22	19	126	41	-85	14	-67.5	51.9
Produce other goods for household use	42	75	59	105	60	-45	18	-42.9	42.9
Construction or major repairs to own or household'	28	35	20	96	12	-84	-16	-87.5	-57.1
Hunting or fishing for household use		1		74	3	-71	3	-95.9	.
Involvement in at least one activity	110	142	97	435	136	-299	26	-68.7	23.6
Employed	67	89	65	220	93	-127	26	-57.7	38.8
Unemployed	10	17	12	91	17	-74	7	-81.3	70.0
Not economically active	33	36	21	124	26	-98	-7	-79.0	-21.2
Mpumalanga									
Subsistence farming	172	191	157	161	135	-26	-37	-16.1	-21.5
Fetching water or collecting wood/dung	296	238	290	325	257	-68	-39	-20.9	-13.2
Produce other goods for household use	44	57	42	57	24	-33	-20	-57.9	-45.5
Construction or major repairs to own or household'	24	14	10	33	14	-19	-10	-57.6	-41.7
Hunting or fishing for household use	1	1	1	15	1	-14		-93.3	0.0
Involvement in at least one activity	439	396	392	473	358	-115	-81	-24.3	-18.5
Employed	81	84	86	116	74	-42	-7	-36.2	-8.6
Unemployed	120	119	110	114	88	-26	-32	-22.8	-26.7
Not economically active	238	193	196	243	195	-48	-43	-19.8	-18.1
Limpopo									
Subsistence farming	160	283	199	212	180	-32	20	-15.1	12.5
Fetching water or collecting wood/dung	1 158	1 061	1 141	1 181	1 218	37	60	3.1	5.2
Produce other goods for household use	3	6	2	42	4	-38	1	-90.5	33.3
Construction or major repairs to own or household'	8	9	10	48	32	-16	24	-33.3	300.0
Hunting or fishing for household use		1	1	44	9	-35	9	-79.5	.
Involvement in at least one activity	1 226	1 178	1 207	1 300	1 306	6	80	0.5	6.5
Employed	216	206	194	247	257	10	41	4.0	19.0
Unemployed	74	76	105	99	97	-2	23	-2.0	31.1
Not economically active	936	895	908	954	952	-2	16	-0.2	1.7

For all values of 10 000 or lower the sample size is too small for reliable estimates.
Due to rounding, numbers do not necessarily add up to totals.

Appendix 2A: Sampling variability for labour force characteristics by sex

	Jul-Sep 2011 CV	Oct-Dec 2011 CV	Estimate	Lower 95%	Upper 95%	P-value
Both sexes						
Population 15–64 yrs						
Labour Force	0,5	0,5	-20	-185	146	0,82
Employed	0,7	0,7	179	15	343	0,03
Formal sector (non-agricultural)	1,0	1,0	180	7	353	0,04
Informal sector (non-agricultural)	2,4	2,5	-26	-114	62	0,56
Agriculture	6,2	6,9	6	-46	58	0,82
Private households	3,1	3,2	20	-49	88	0,58
Unemployed	1,8	1,9	-198	-344	-52	0,01
Not economically active	0,6	0,6	134	-31	300	0,11
Discouraged work-seekers	3,1	2,8	111	-2	225	0,06
Other (not economically active)	0,6	0,6	23	-125	171	0,76
Rates (%)						
Unemployment rate	1,6	1,7	-1,1	-1,8	-0,3	0,00
Employed/population ratio (absorption)	0,7	0,7	0,4	-0,1	0,9	0,11
Labour force participation rate	0,5	0,5	-0,3	-0,8	0,3	0,33
Women						
Population 15–64 yrs						
Labour Force	0,8	0,8	-14	-126	98	0,80
Employed	1,0	1,0	113	15	211	0,02
Formal sector (non-agricultural)	1,3	1,4	130	38	221	0,01
Informal sector (non-agricultural)	3,3	3,4	-17	-72	38	0,55
Agriculture	8,5	8,6	-7	-37	24	0,69
Private households	3,3	3,2	6	-49	62	0,82
Unemployed	2,2	2,4	-128	-220	-34	0,01
Not economically active	0,7	0,7	65	-48	176	0,26
Discouraged work-seekers	3,4	3,4	41	-43	124	0,34
Other (not economically active)	0,8	0,8	24	-83	131	0,66
Rates (%)						
Unemployment rate	2,0	2,1	-1,5	-2,5	-0,5	0,00
Employed/population ratio (absorption)	1,0	1,0	0,5	0,0	1,2	0,06
Labour force participation rate	0,8	0,8	-0,3	-0,9	0,4	0,50

Appendix 2A: Sampling variability for labour force characteristics by sex (concluded)

	Jul-Sep 2011 CV	Oct-Dec 2011 CV	Estimate	Lower 95%	Upper 95%	P-value
Men						
Population 15–64 yrs						
Labour Force	0,6	0,6	-5	-117	107	0,93
Employed	0,9	0,8	66	-54	186	0,28
Formal sector (non-agricultural)	1,2	1,1	50	-78	178	0,44
Informal sector (non-agricultural)	3,2	3,2	-9	-81	63	0,80
Agriculture	6,7	7,6	13	-30	55	0,57
Private households	6,3	6,1	12	-19	44	0,43
Unemployed	2,2	2,4	-71	-168	26	0,15
Not economically active	1,0	0,9	70	-42	182	0,22
Discouraged work-seekers	4,3	3,5	71	-8	150	0,08
Other (not economically active)	1,0	1,0	-1	-96	94	0,98
Rates (%)						
Unemployment rate	2,2	2,3	-0,7	-1,7	0,2	0,14
Employed/population ratio (absorption)	0,9	0,8	0,2	-0,5	1,0	0,57
Labour force participation rate	0,6	0,6	-0,2	-1,0	0,4	0,43

Appendix 2.1A: Sampling variability for labour force characteristics by population group

	Jul-Sep 2011 CV	Oct-Dec 2011 CV	Estimate	Lower 95%	Upper 95%	P-value
South Africa						
Population 15-64 yrs						
Labour Force	0,5	0,5	-20	-185	146	0,82
Employed	0,7	0,7	179	15	343	0,03
Unemployed	1,8	1,9	-198	-344	-52	0,01
Not economically active	0,6	0,6	134	-31	300	0,11
Rates (%)						
Unemployment rate	1,6	1,7	-1,1	-1,8	-0,3	0,00
Employed/population ratio (absorption)	0,7	0,7	0,4	-0,1	0,9	0,11
Labour force participation rate	0,5	0,5	-0,3	-0,8	0,3	0,33
Black African						
Population 15-64 yrs						
Labour Force	0,7	0,7	6	-144	155	0,94
Employed	0,9	0,9	158	15	302	0,03
Unemployed	2,0	2,1	-153	-290	-16	0,03
Not economically active	0,7	0,7	106	-44	256	0,16
Rates (%)						
Unemployment rate	1,8	1,9	-1,2	-2,1	-0,3	0,01
Employed/population ratio (absorption)	0,9	0,9	0,5	-0,1	1,0	0,11
Labour force participation rate	0,7	0,7	-0,2	-0,8	0,4	0,50
Coloured						
Population 15-64 yrs						
Labour Force	1,0	1,1	-31	-70	7	0,11
Employed	1,5	1,5	25	-20	72	0,28
Unemployed	5,2	5,0	-57	-101	-12	0,01
Not economically active	1,8	1,9	40	1	78	0,05
Rates (%)						
Unemployment rate	4,7	4,7	-2,5	-4,7	-0,4	0,02
Employed/population ratio (absorption)	1,5	1,5	0,7	-0,8	2,2	0,36
Labour force participation rate	1,0	1,1	-1,3	-2,5	0,1	0,06

Appendix 2.1A: Sampling variability for labour force characteristics by population group (concluded)						
	Jul-Sep 2011 CV	Oct-Dec 2011 CV	Estimate	Lower 95%	Upper 95%	P-value
Indian/Asian						
Population 15-64 yrs						
Labour Force	2,8	2,5	5	-22	30	0,75
Employed	3,6	3,4	16	-11	44	0,25
Unemployed	18,1	18,1	-12	-29	6	0,18
Not economically active	3,7	3,3	0	-26	26	0,99
Rates (%)						
Unemployment rate	17,9	18,5	-2,3	-5,5	0,9	0,15
Employed/population ratio (absorption)	3,6	3,4	1,5	-1,5	4,5	0,32
Labour force participation rate	2,8	2,5	0,2	-2,6	3,0	0,88
White						
Population 15-64 yrs						
Labour Force	1,1	1,3	2	-46	51	0,93
Employed	1,3	1,5	-21	-68	25	0,37
Unemployed	12,1	10,1	24	3	44	0,03
Not economically active	2,4	2,7	-11	-59	38	0,66
Rates (%)						
Unemployment rate	12,0	10,1	1,1	0,2	2,1	0,02
Employed/population ratio (absorption)	1,3	1,5	-0,5	-2,0	1,0	0,50
Labour force participation rate	1,1	1,3	0,3	-1,3	1,8	0,74

Appendix 2.2A: Sampling variability for labour force characteristics by province

	Jul-Sep 2011 CV	Oct-Dec 2011 CV	Estimate	Lower 95%	Upper 95%	P-value
South Africa						
Population 15–64 yrs						
Labour Force	0,5	0,5	-20	-185	146	0,82
Employed	0,7	0,7	179	15	343	0,03
Unemployed	1,8	1,9	-198	-344	-52	0,01
Not economically active	0,6	0,6	134	-31	300	0,11
Discouraged work-seekers	3,1	2,8	111	-2	225	0,06
Other	0,6	0,6	23	-125	171	0,76
Rates (%)						
Unemployment rate	1,6	1,7	-1,1	-1,8	-0,3	0,00
Employed/population ratio (absorption)	0,7	0,7	0,4	-0,1	0,9	0,11
Labour force participation rate	0,5	0,5	-0,3	-0,8	0,3	0,33
Western Cape						
Population 15–64 yrs						
Labour Force	0,9	1,0	-7	-54	40	0,76
Employed	1,5	1,6	36	-18	91	0,19
Unemployed	4,5	4,0	-43	-91	4	0,07
Not economically active	2,0	2,1	21	-27	68	0,39
Discouraged work-seekers	29,0	16,8	16	-1	32	0,06
Other	2,2	2,1	5	-43	53	0,84
Rates (%)						
Unemployment rate	4,3	4,0	-1,7	-3,7	0,1	0,07
Employed/population ratio (absorption)	1,5	1,6	0,9	-0,7	2,4	0,29
Labour force participation rate	0,9	1,0	-0,5	-1,8	0,9	0,50

Appendix 2.2A: Sampling variability for labour force characteristics by province (continued)

	Jul-Sep 2011 CV	Oct-Dec 2011 CV	Estimate	Lower 95%	Upper 95%	P-value
Eastern Cape						
Population 15–64 yrs						
Labour Force	2,5	2,7	40	-21	101	0,20
Employed	2,4	2,7	28	-25	82	0,29
Unemployed	7,1	8,0	11	-44	67	0,70
Not economically active	1,8	2,0	-29	-89	33	0,36
Discouraged work-seekers	10,0	8,1	-35	-75	5	0,09
Other	1,9	2,1	7	-45	59	0,80
Rates (%)						
Unemployment rate	5,6	6,5	0,0	-2,6	2,7	0,99
Employed/population ratio (absorption)	2,4	2,7	0,5	-0,7	1,9	0,36
Labour force participation rate	2,5	2,7	0,8	-0,6	2,3	0,26
Northern Cape						
Population 15–64 yrs						
Labour Force	2,2	2,3	10	-11	32	0,36
Employed	2,4	3,4	13	-4	30	0,14
Unemployed	7,8	8,0	-3	-23	18	0,80
Not economically active	2,5	2,8	-8	-29	14	0,47
Discouraged work-seekers	10,1	11,1	5	-2	12	0,15
Other	2,8	3,3	-13	-32	7	0,20
Rates (%)						
Unemployment rate	6,5	7,4	-1,5	-5,7	2,9	0,53
Employed/population ratio (absorption)	2,4	3,4	1,6	-0,7	4,0	0,17
Labour force participation rate	2,2	2,3	1,2	-1,8	4,2	0,42

Appendix 2.2A: Sampling variability for labour force characteristics by province (continued)

	Jul-Sep 2011 CV	Oct-Dec 2011 CV	Estimate	Lower 95%	Upper 95%	P-value
Free State						
Population 15–64 yrs						
Labour Force	2,6	1,8	-42	-107	24	0,22
Employed	3,9	2,0	-73	-137	-9	0,03
Unemployed	6,5	4,1	31	-9	72	0,12
Not economically active	3,8	2,3	45	-21	111	0,18
Discouraged work-seekers	15,1	16,3	-17	-45	9	0,20
Other	3,4	2,5	63	8	117	0,03
Rates (%)						
Unemployment rate	6,7	3,3	3,9	0,6	7,4	0,02
Employed/population ratio (absorption)	3,9	2,0	-4,0	-7,4	-0,6	0,02
Labour force participation rate	2,6	1,8	-2,4	-5,8	1,2	0,19
KwaZulu-Natal						
Population 15–64 yrs						
Labour Force	1,4	1,7	73	-14	159	0,10
Employed	1,5	1,7	52	-21	125	0,17
Unemployed	6,2	5,3	21	-55	96	0,59
Not economically active	1,2	1,4	-46	-133	41	0,30
Discouraged work-seekers	5,3	5,2	-2	-53	50	0,96
Other	1,6	1,7	-45	-135	46	0,34
Rates (%)						
Unemployment rate	5,5	4,6	0,2	-1,9	2,3	0,84
Employed/population ratio (absorption)	1,5	1,7	0,7	-0,5	1,7	0,26
Labour force participation rate	1,4	1,7	0,9	-0,4	2,2	0,17

Appendix 2.2A: Sampling variability for labour force characteristics by province (continued)

	Jul-Sep 2011 CV	Oct-Dec 2011 CV	Estimate	Lower 95%	Upper 95%	P-value
North West						
Population 15–64 yrs						
Labour Force	2,9	2,7	-24	-66	18	0,26
Employed	3,2	2,7	20	-14	53	0,25
Unemployed	6,1	7,2	-44	-72	-15	0,00
Not economically active	2,5	2,2	30	-12	72	0,16
Discouraged work-seekers	7,3	5,7	21	-7	51	0,15
Other	3,0	2,6	9	-25	42	0,62
Rates (%)						
Unemployment rate	4,8	5,8	-4,0	-6,5	-1,5	0,00
Employed/population ratio (absorption)	3,2	2,7	0,9	-0,8	2,5	0,31
Labour force participation rate	2,9	2,7	-1,3	-3,4	0,7	0,21
Gauteng						
Population 15–64 yrs						
Labour Force	1,0	1,0	-24	-96	49	0,53
Employed	1,3	1,2	132	36	226	0,01
Unemployed	3,1	3,7	-154	-233	-77	0,00
Not economically active	2,4	2,2	49	-23	122	0,18
Discouraged work-seekers	14,1	10,4	74	22	125	0,01
Other	2,1	2,0	-24	-93	45	0,49
Rates (%)						
Unemployment rate	2,7	3,3	-2,7	-4,1	-1,3	0,00
Employed/population ratio (absorption)	1,3	1,2	1,5	0,3	2,7	0,02
Labour force participation rate	1,0	1,0	-0,5	-1,5	0,4	0,26

Appendix 2.2A: Sampling variability for labour force characteristics by province (concluded)

	Jul-Sep 2011 CV	Oct-Dec 2011 CV	Estimate	Lower 95%	Upper 95%	P-value
Mpumalanga						
Population 15–64 yrs						
Labour Force	1,7	1,7	-8	-52	36	0,72
Employed	2,3	2,3	12	-27	52	0,54
Unemployed	5,5	5,8	-20	-49	8	0,17
Not economically active	2,0	2,0	18	-26	62	0,42
Discouraged work-seekers	8,4	7,8	19	-15	54	0,27
Other	2,6	2,7	-2	-41	38	0,95
Rates (%)						
Unemployment rate	4,9	5,2	-1,4	-3,4	0,6	0,16
Employed/population ratio (absorption)	2,3	2,3	0,3	-1,3	2,1	0,68
Labour force participation rate	1,7	1,7	-0,6	-2,5	1,3	0,55
Limpopo						
Population 15–64 yrs						
Labour Force	2,8	3,0	-37	-94	20	0,20
Employed	3,4	3,8	-41	-87	6	0,09
Unemployed	7,2	7,9	3	-29	35	0,84
Not economically active	1,7	1,7	54	-4	111	0,07
Discouraged work-seekers	4,2	6,7	31	-21	82	0,24
Other	2,0	2,1	22	-29	75	0,39
Rates (%)						
Unemployment rate	6,9	7,7	0,9	-1,3	3,0	0,44
Employed/population ratio (absorption)	3,4	3,8	-1,3	-2,7	0,0	0,05
Labour force participation rate	2,8	3,0	-1,3	-3,0	0,4	0,14

Appendix 3.1A: Sampling variability for the employed by industry and sex

	Jul-Sep 2011 CV	Oct-Dec 2011 CV	Estimate	Lower 95%	Upper 95%	P-value
Both sexes						
Agriculture	0,7	0,7	179	15	343	0,03
Mining	6,2	6,9	6	-46	58	0,82
Manufacturing	7,5	9,9	3	-33	41	0,84
Utilities	3,1	2,8	52	-41	147	0,27
	11,8	10,6	8	-11	25	0,44
Construction	5,1	3,7	-29	-143	83	0,60
Trade	2,1	2,2	48	-59	155	0,38
Transport	3,7	3,9	32	-22	86	0,24
Finance	2,3	2,8	-29	-106	48	0,46
Community and social services	2,2	2,1	66	-31	163	0,18
Private households	3,1	3,2	20	-49	88	0,58
Women						
Agriculture	1,0	1,0	113	15	211	0,02
Mining	8,5	8,6	-7	-37	24	0,69
Manufacturing	19,6	16,3	3	-7	12	0,60
	4,7	4,7	1	-45	46	0,99
Utilities	25,7	32,6	1	-6	8	0,84
Construction	7,5	8,5	6	-14	27	0,55
Trade	2,6	2,7	55	-17	127	0,13
Transport	8,9	7,6	27	3	51	0,03
Finance	3,5	3,8	-38	-96	22	0,22
Community and social services	2,4	2,4	57	-13	127	0,11
Private households	3,3	3,2	6	-49	62	0,82
Men						
Agriculture	0,9	0,8	66	-54	186	0,28
Mining	6,7	7,6	13	-30	55	0,57
Manufacturing	7,8	10,1	2	-31	33	0,93
	3,3	3,0	52	-24	128	0,18
Utilities	12,2	12,7	7	-11	24	0,46
Construction	5,6	3,9	-36	-147	74	0,52
Trade	3,2	2,9	-7	-86	72	0,86
Transport	4,0	4,2	5	-43	53	0,83
Finance	3,2	3,6	9	-46	63	0,76
Community and social services	3,1	2,8	9	-48	66	0,77
Private households	6,3	6,1	12	-19	44	0,43

Appendix 3.4A: Sampling variability for the employed by province and sector

	Jul-Sep 2011 CV	Oct-Dec 2011 CV	Estimate	Lower 95%	Upper 95%	P-value
South Africa	0,7	0,7	179	15	343	0,03
Formal sector (non-agricultural)	1,0	1,0	180	7	353	0,04
Informal sector (non-agricultural)	2,4	2,5	-26	-114	62	0,56
Agriculture	6,2	6,9	6	-46	58	0,82
Private households	3,1	3,2	20	-49	88	0,58
Western Cape	1,5	1,6	36	-18	91	0,19
Formal sector (non-agricultural)	2,2	2,2	68	14	122	0,01
Informal sector (non-agricultural)	8,0	8,5	-12	-32	8	0,24
Agriculture	11,7	11,8	-19	-32	-4	0,01
Private households	10,6	7,2	-2	-23	20	0,89
Eastern Cape	2,4	2,7	28	-25	82	0,29
Formal sector (non-agricultural)	3,0	3,6	27	-26	80	0,32
Informal sector (non-agricultural)	7,1	6,4	1	-31	34	0,93
Agriculture	24,1	20,1	-3	-21	15	0,72
Private households	11,6	12,8	4	-19	27	0,76
Northern Cape	2,4	3,4	13	-4	30	0,14
Formal sector (non-agricultural)	3,8	5,5	8	-7	22	0,32
Informal sector (non-agricultural)	10,7	13,8	-4	-11	3	0,30
Agriculture	11,7	10,7	8	-3	19	0,18
Private households	17,3	13,8	1	-3	6	0,55
Free State	3,9	2,0	-73	-137	-9	0,03
Formal sector (non-agricultural)	6,9	2,7	-56	-131	20	0,15
Informal sector (non-agricultural)	7,0	7,0	-15	-30	0	0,05
Agriculture	11,6	9,1	-6	-19	8	0,40
Private households	8,2	8,7	3	-12	18	0,68
KwaZulu-Natal	1,5	1,7	52	-21	125	0,17
Formal sector (non-agricultural)	2,5	2,9	69	-10	147	0,09
Informal sector (non-agricultural)	5,8	6,0	4	-42	50	0,86
Agriculture	17,8	18,1	-2	-26	22	0,86
Private households	7,8	8,2	-19	-42	5	0,11

Appendix 3.4A: Sampling variability for the employed by province and sector (concluded)

	Jul-Sep 2011 CV	Oct-Dec 2011 CV	Estimate	Lower 95%	Upper 95%	P-value
North West						
Formal sector (non-agricultural)	3,2	2,7	20	-14	53	0,25
Informal sector (non-agricultural)	4,5	3,7	13	-17	44	0,40
Agriculture	7,5	8,8	4	-9	17	0,53
Private households	21,8	21,5	-1	-6	5	0,85
	13,2	11,6	2	-10	16	0,67
Gauteng						
Formal sector (non-agricultural)	1,3	1,2	132	36	226	0,01
Informal sector (non-agricultural)	1,6	1,8	91	-1	184	0,05
Agriculture	5,3	5,6	-14	-65	37	0,59
Private households	22,5	29,9	25	-5	55	0,10
	6,2	6,7	29	-21	79	0,25
Mpumalanga						
Formal sector (non-agricultural)	2,3	2,3	12	-27	52	0,54
Informal sector (non-agricultural)	4,0	3,9	-8	-41	26	0,66
Agriculture	6,2	6,0	14	-3	32	0,11
Private households	13,5	13,0	0	-13	13	1,00
	7,1	9,3	5	-8	19	0,43
Limpopo						
Formal sector (non-agricultural)	3,4	3,8	-41	-87	6	0,09
Informal sector (non-agricultural)	4,1	4,5	-33	-75	9	0,12
Agriculture	4,9	6,1	-5	-37	27	0,77
Private households	25,0	30,6	3	-12	19	0,66
	10,8	10,6	-6	-16	4	0,25

Appendix 3.5A: Sampling variability for the employed by sex and occupation

	Jul-Sep 2011 CV	Oct-Dec 2011 CV	Estimate	Lower 95%	Upper 95%	P-value
Both sexes	0,7	0,7	179	15	343	0,03
Manager	3,7	3,1	0	-61	61	1,00
Professional	4,2	4,5	-18	-75	38	0,53
Technician	2,5	2,7	58	-15	132	0,12
Clerk	2,5	2,5	97	28	166	0,01
Sales and services	2,3	2,3	-15	-109	80	0,76
Skilled agriculture	12,4	12,2	6	-10	22	0,44
Craft and related trade	3,6	2,7	-18	-135	99	0,76
Plant and machine operator	3,1	3,0	29	-38	95	0,41
Elementary	2,1	2,1	39	-69	149	0,47
Domestic worker	3,3	3,3	0	-56	57	0,99
Women	1,0	1,0	113	15	211	0,02
Manager	6,0	5,7	-9	-49	31	0,66
Professional	5,0	5,6	-30	-68	6	0,10
Technician	3,3	3,6	42	-9	92	0,11
Clerk	3,0	3,0	78	23	131	0,01
Sales and services	2,9	3,1	11	-43	64	0,70
Skilled agriculture	22,5	22,3	1	-7	10	0,79
Craft and related trade	7,0	7,2	1	-27	30	0,94
Plant and machine operator	8,7	8,3	-1	-25	23	0,95
Elementary	2,9	2,9	22	-44	89	0,51
Domestic worker	3,3	3,3	0	-55	54	0,99
Men	0,9	0,8	66	-54	186	0,28
Manager	3,9	3,7	9	-43	61	0,73
Professional	5,8	5,2	12	-26	50	0,52
Technician	4,1	3,8	17	-33	66	0,51
Clerk	4,3	4,3	20	-19	59	0,32
Sales and services	3,2	3,1	-25	-94	44	0,48
Skilled agriculture	14,3	12,7	5	-8	18	0,46
Craft and related trade	4,0	2,8	-19	-135	96	0,75
Plant and machine operator	3,1	3,3	29	-32	90	0,35
Elementary	2,7	2,8	17	-68	102	0,69
Domestic worker	18,7	17,4	1	-14	16	0,91

Appendix 2B: Sampling variability for labour force characteristics by sex

	Oct-Dec 2010 CV	Oct-Dec 2011 CV	Estimate	Lower 95%	Upper 95%	P-value
Both sexes						
Population 15–64 yrs						
Labour Force	0,6	0,5	472	218	727	0,00
Employed	0,7	0,7	365	112	619	0,01
Formal sector (non-agricultural)	1,0	1,0	453	193	714	0,00
Informal sector (non-agricultural)	2,3	2,5	-91	-237	54	0,22
Agriculture	4,7	6,9	3	-100	106	0,95
Private households	3,6	3,2	1	-105	106	1,00
Unemployed	2,1	1,9	107	-129	344	0,37
Not economically active	0,7	0,6	5	-250	260	0,97
Discouraged work-seekers	3,0	2,8	165	-21	351	0,08
Other (not economically active)	0,7	0,6	-160	-391	71	0,17
Rates (%)						
Unemployment rate	1,9	1,7	-0,1	-1,3	1,2	0,96
Employed/population ratio (absorption)	0,7	0,7	0,5	-0,3	1,3	0,19
Labour force participation rate	0,6	0,5	0,7	-0,1	1,5	0,10
Women						
Population 15–64 yrs						
Labour Force	0,8	0,8	288	118	457	0,00
Employed	1,0	1,0	222	64	381	0,01
Formal sector (non-agricultural)	1,4	1,4	271	121	421	0,00
Informal sector (non-agricultural)	3,2	3,4	-48	-129	33	0,24
Agriculture	7,3	8,6	-11	-56	35	0,65
Private households	3,5	3,2	10	-69	89	0,80
Unemployed	2,7	2,4	65	-76	207	0,37
Not economically active	0,7	0,7	-79	-249	90	0,36
Discouraged work-seekers	3,4	3,4	84	-37	204	0,17
Other (not economically active)	0,8	0,8	-163	-325	-1	0,05
Rates (%)						
Unemployment rate	2,3	2,1	-0,1	-1,7	1,5	0,86
Employed/population ratio (absorption)	1,0	1,0	0,9	-0,1	1,9	0,06
Labour force participation rate	0,8	0,8	1,1	0,1	2,2	0,03

Appendix 2B: Sampling variability for labour force characteristics by sex (concluded)

	Oct-Dec 2010 CV	Oct-Dec 2011 CV	Estimate	Lower 95%	Upper 95%	P-value
Men						
Population 15–64 yrs						
Labour Force	0,6	0,6	185	34	335	0,02
Employed	0,9	0,8	143	-23	308	0,09
Formal sector (non-agricultural)	1,2	1,1	182	6	359	0,04
Informal sector (non-agricultural)	2,8	3,2	-43	-153	66	0,44
Agriculture	5,4	7,6	14	-65	92	0,73
Private households	7,9	6,1	-10	-60	41	0,70
Unemployed	2,5	2,4	42	-103	188	0,57
Not economically active	1,0	0,9	84	-66	235	0,27
Discouraged work-seekers	4,0	3,5	81	-15	178	0,10
Other (not economically active)	0,9	1,0	3	-122	128	0,96
Rates (%)						
Unemployment rate	2,3	2,3	0,0	-1,4	1,4	0,98
Employed/population ratio (absorption)	0,9	0,8	0,1	-1,0	1,1	0,87
Labour force participation rate	0,6	0,6	0,1	-0,8	1,1	0,79

Appendix 2.1B: Sampling variability for labour force characteristics by population group

	Oct-Dec 2010 CV	Oct-Dec 2011 CV	Estimate	Lower 95%	Upper 95%	P-value
South Africa						
Population 15–64 yrs						
Labour Force	0,6	0,5	472	218	727	0,00
Employed	0,7	0,7	365	112	619	0,01
Unemployed	2,1	1,9	107	-129	344	0,37
Not economically active	0,7	0,6	5	-250	260	0,97
Rates (%)						
Unemployment rate	1,9	1,7	-0,1	-1,3	1,2	0,96
Employed/population ratio (absorption)	0,7	0,7	0,5	-0,3	1,3	0,19
Labour force participation rate	0,6	0,5	0,7	-0,1	1,5	0,10
Black African						
Population 15–64 yrs						
Labour Force	0,7	0,7	447	210	684	0,00
Employed	0,9	0,9	370	137	603	0,00
Unemployed	2,3	2,1	76	-146	300	0,50
Not economically active	0,7	0,7	12	-225	250	0,92
Rates (%)						
Unemployment rate	2,0	1,9	-0,4	-1,9	1,2	0,64
Employed/population ratio (absorption)	0,9	0,9	0,8	-0,1	1,7	0,09
Labour force participation rate	0,7	0,7	0,8	-0,1	1,8	0,08
Coloured						
Population 15–64 yrs						
Labour Force	1,0	1,1	41	-18	99	0,17
Employed	1,6	1,5	36	-31	104	0,29
Unemployed	5,4	5,0	5	-56	65	0,89
Not economically active	1,7	1,9	-5	-64	53	0,84
Rates (%)						
Unemployment rate	5,2	4,7	-0,2	-3,2	2,8	0,89
Employed/population ratio (absorption)	1,6	1,5	0,6	-1,6	2,9	0,58
Labour force participation rate	1,0	1,1	0,6	-1,3	2,6	0,53

Appendix 2.1B: Sampling variability for labour force characteristics by population group (concluded)						
	Oct-Dec 2010 CV	Oct-Dec 2011 CV	Estimate	Lower 95%	Upper 95%	P-value
Indian/Asian						
Population 15-64 yrs						
Labour Force	2,2	2,5	-26	-59	8	0,13
Employed	2,3	3,4	-27	-65	11	0,16
Unemployed	21,0	18,1	1	-24	26	0,94
Not economically active	3,4	3,3	42	9	75	0,01
Rates (%)						
Unemployment rate	20,2	18,5	0,6	-3,9	5,0	0,80
Employed/population ratio (absorption)	2,3	3,4	-3,9	-7,9	0,2	0,06
Labour force participation rate	2,2	2,5	-3,8	-7,4	-0,2	0,04
White						
Population 15-64 yrs						
Labour Force	1,2	1,3	11	-62	84	0,77
Employed	1,3	1,5	-14	-95	66	0,73
Unemployed	12,0	10,1	26	-17	67	0,24
Not economically active	2,4	2,7	-44	-116	29	0,24
Rates (%)						
Unemployment rate	11,8	10,1	1,2	-0,8	3,1	0,25
Employed/population ratio (absorption)	1,3	1,5	0,3	-2,4	2,8	0,87
Labour force participation rate	1,2	1,3	1,1	-1,3	3,4	0,37

Appendix 2.2B: Sampling variability for labour force characteristics by province

	Oct-Dec 2010 CV	Oct-Dec 2011 CV	Estimate	Lower 95%	Upper 95%	P-value
South Africa						
Population 15–64 yrs						
Labour Force	0,6	0,5	472	218	727	0,00
Employed	0,7	0,7	365	112	619	0,01
Unemployed	2,1	1,9	107	-129	344	0,37
Not economically active	0,7	0,6	5	-250	260	0,97
Discouraged work-seekers	3,0	2,8	165	-21	351	0,08
Other	0,7	0,6	-160	-391	71	0,17
Rates (%)						
Unemployment rate	1,9	1,7	0,1	-1,3	1,2	0,96
Employed/population ratio (absorption)	0,7	0,7	0,5	-0,3	1,3	0,19
Labour force participation rate	0,6	0,5	0,7	-0,1	1,5	0,10
Western Cape						
Population 15–64 yrs						
Labour Force	1,2	1,0	78	5	151	0,04
Employed	1,7	1,6	70	-12	152	0,09
Unemployed	5,1	4,0	9	-58	74	0,81
Not economically active	2,5	2,1	-24	-98	49	0,51
Discouraged work-seekers	30,0	16,8	22	0	44	0,05
Other	2,4	2,1	-46	-114	22	0,18
Rates (%)						
Unemployment rate	4,9	4,0	-0,3	-3,1	2,4	0,78
Employed/population ratio (absorption)	1,7	1,6	1,2	-1,2	3,6	0,32
Labour force participation rate	1,2	1,0	1,2	-0,9	3,4	0,26

Appendix 2.2B: Sampling variability for labour force characteristics by province (continued)

	Oct-Dec 2010 CV	Oct-Dec 2011 CV	Estimate	Lower 95%	Upper 95%	P-value
Eastern Cape						
Population 15–64 yrs						
Labour Force	2,6	2,7	58	-59	175	0,33
Employed	2,7	2,7	-2	-107	104	0,98
Unemployed	4,7	8,0	59	-19	138	0,14
Not economically active	1,9	2,0	-10	-126	107	0,87
Discouraged work-seekers	7,0	8,1	-18	-89	53	0,62
Other	2,0	2,1	9	-93	109	0,87
Rates (%)						
Unemployment rate	3,7	6,5	2,4	-1,4	6,3	0,21
Employed/population ratio (absorption)	2,7	2,7	-0,5	-2,9	2,1	0,75
Labour force participation rate	2,6	2,7	0,9	-1,9	3,7	0,53
Northern Cape						
Population 15–64 yrs						
Labour Force	2,1	2,3	30	7	54	0,01
Employed	3,0	3,4	13	-13	39	0,32
Unemployed	6,6	8,0	17	-4	38	0,11
Not economically active	2,2	2,8	-22	-46	1	0,06
Discouraged work-seekers	12,4	11,1	2	-10	14	0,78
Other	2,6	3,3	-24	-46	-2	0,03
Rates (%)						
Unemployment rate	6,4	7,4	2,4	-2,7	7,7	0,34
Employed/population ratio (absorption)	3,0	3,4	1,3	-2,3	5,0	0,46
Labour force participation rate	2,1	2,3	3,6	0,4	6,9	0,03

Appendix 2.2B: Sampling variability for labour force characteristics by province (continued)

	Oct-Dec 2010 CV	Oct-Dec 2011 CV	Estimate	Lower 95%	Upper 95%	P-value
Free State						
Population 15–64 yrs						
Labour Force	1,5	1,8	-10	-57	38	0,70
Employed	2,3	2,0	-32	-77	14	0,17
Unemployed	4,2	4,1	22	-15	59	0,24
Not economically active	2,0	2,3	23	-24	71	0,33
Discouraged work-seekers	8,1	16,3	5	-28	39	0,76
Other	2,2	2,5	18	-30	66	0,46
Rates (%)						
Unemployment rate	4,1	3,3	2,3	-0,8	5,4	0,14
Employed/population ratio (absorption)	2,3	2,0	-2,0	-4,4	0,4	0,11
Labour force participation rate	1,5	1,8	-1,0	-3,5	1,6	0,47
KwaZulu-Natal						
Population 15–64 yrs						
Labour Force	2,0	1,7	136	-22	292	0,09
Employed	1,8	1,7	123	-1	246	0,05
Unemployed	7,3	5,3	13	-95	120	0,82
Not economically active	1,6	1,4	-26	-182	132	0,75
Discouraged work-seekers	5,9	5,2	7	-75	89	0,86
Other	1,9	1,7	-33	-200	135	0,70
Rates (%)						
Unemployment rate	6,1	4,6	-0,5	-3,4	2,5	0,77
Employed/population ratio (absorption)	1,8	1,7	1,3	-0,6	3,1	0,19
Labour force participation rate	2,0	1,7	1,3	-1,1	3,6	0,29

Appendix 2.2B: Sampling variability for labour force characteristics by province (continued)

	Oct-Dec 2010 CV	Oct-Dec 2011 CV	Estimate	Lower 95%	Upper 95%	P-value
North West						
Population 15–64 yrs						
Labour Force	3,0	2,7	-48	-126	30	0,23
Employed	4,0	2,7	-40	-118	39	0,32
Unemployed	7,7	7,2	-8	-62	46	0,77
Not economically active	2,8	2,2	72	-6	150	0,07
Discouraged work-seekers	7,8	5,7	75	28	122	0,00
Other	3,0	2,6	-3	-68	61	0,92
Rates (%)						
Unemployment rate	7,3	5,8	0,4	-5,0	5,7	0,89
Employed/population ratio (absorption)	4,0	2,7	-2,3	-6,2	1,5	0,23
Labour force participation rate	3,0	2,7	-2,9	-6,7	0,9	0,14
Gauteng						
Population 15–64 yrs						
Labour Force	1,1	1,0	102	-49	253	0,18
Employed	1,3	1,2	162	17	307	0,03
Unemployed	4,4	3,7	-59	-221	102	0,47
Not economically active	2,6	2,2	13	-139	164	0,87
Discouraged work-seekers	12,5	10,4	0	-110	110	1,00
Other	2,4	2,0	13	-113	138	0,84
Rates (%)						
Unemployment rate	3,8	3,3	-1,6	-4,2	1,0	0,24
Employed/population ratio (absorption)	1,3	1,2	1,3	-0,6	3,2	0,17
Labour force participation rate	1,1	1,0	0,3	-1,7	2,2	0,77

Appendix 2.2B: Sampling variability for labour force characteristics by province (concluded)

	Oct-Dec 2010 CV	Oct-Dec 2011 CV	Estimate	Lower 95%	Upper 95%	P-value
Mpumalanga						
Population 15-64 yrs						
Labour Force	1,8	1,7	49	-8	106	0,09
Employed	2,6	2,3	47	-18	112	0,16
Unemployed	7,1	5,8	2	-58	63	0,95
Not economically active	2,1	2,0	-10	-67	47	0,74
Discouraged work-seekers	7,8	7,8	25	-20	70	0,28
Other	2,5	2,7	-35	-99	29	0,29
Rates (%)						
Unemployment rate	6,3	5,2	-1,0	-5,4	3,6	0,68
Employed/population ratio (absorption)	2,6	2,3	1,3	-1,4	4,2	0,34
Labour force participation rate	1,8	1,7	1,2	-1,3	3,7	0,34
Limpopo						
Population 15-64 yrs						
Labour Force	3,0	3,0	77	-19	173	0,12
Employed	3,5	3,8	23	-78	125	0,65
Unemployed	7,1	7,9	53	6	100	0,03
Not economically active	1,6	1,7	-11	-107	85	0,82
Discouraged work-seekers	5,2	6,7	48	-22	117	0,18
Other	1,6	2,1	-59	-146	29	0,19
Rates (%)						
Unemployment rate	7,0	7,7	3,3	-0,7	7,3	0,11
Employed/population ratio (absorption)	3,5	3,8	0,2	-2,9	3,2	0,93
Labour force participation rate	3,0	3,0	1,5	-1,3	4,5	0,28

Appendix 3.1B: Sampling variability for the employed by industry and sex

	Oct-Dec 2010 CV	Oct-Dec 2011 CV	Estimate	Lower 95%	Upper 95%	P-value
Both sexes	0,7	0,7	365	112	619	
Agriculture	4,7	6,9	3	-100	106	0,01
Mining	6,9	9,9	29	-40	98	0,95
Manufacturing	2,8	2,8	6	-143	155	0,41
Utilities	10,5	10,6	-13	-41	14	0,94
Construction	3,5	3,7	1	-107	109	0,33
Trade	2,3	2,2	85	-109	279	0,99
Transport	3,7	3,9	27	-55	109	0,39
Finance	3,1	2,8	145	12	279	0,52
Community and social services	2,0	2,1	76	-96	248	0,03
Private households	3,6	3,2	1	-105	106	0,38
						1,00
Women	1,0	1,0	222	64	381	
Agriculture	7,3	8,6	-11	-56	35	0,01
Mining	12,6	16,3	-7	-22	8	0,65
Manufacturing	4,5	4,7	-32	-116	53	0,33
Utilities	16,4	32,6	-14	-26	-1	0,46
Construction	10,4	8,5	8	-22	38	0,03
Trade	2,8	2,7	64	-44	170	0,60
Transport	7,0	7,6	15	-17	46	0,25
Finance	4,0	3,8	98	19	177	0,36
Community and social services	2,5	2,4	91	-27	209	0,02
Private households	3,5	3,2	10	-69	89	0,13
						0,80
Men	0,9	0,8	143	-23	308	
Agriculture	5,4	7,6	14	-65	92	0,09
Mining	7,7	10,1	37	-27	100	0,73
Manufacturing	2,9	3,0	37	-62	137	0,26
Utilities	12,4	12,7	0	-24	24	0,46
Construction	3,7	3,9	-7	-107	93	0,97
Trade	3,1	2,9	22	-112	156	0,89
Transport	4,2	4,2	12	-58	83	0,75
Finance	4,0	3,6	47	-53	147	0,73
Community and social services	2,9	2,8	-15	-111	82	0,36
Private households	7,9	6,1	-10	-60	41	0,77
						0,70

Appendix 3.4B: Sampling variability for the employed by province and sector

	Oct-Dec 2010 CV	Oct-Dec 2011 CV	Estimate	Lower 95%	Upper 95%	P-value
South Africa						
Formal sector (non-agricultural)	0,7	0,7	365	112	619	0,01
Informal sector (non-agricultural)	1,0	1,0	453	193	714	0,00
Agriculture	2,3	2,5	-91	-237	54	0,22
Private households	4,7	6,9	3	-100	106	0,95
	3,6	3,2	1	-105	106	1,00
Western Cape						
Formal sector (non-agricultural)	1,7	1,6	70	-12	152	0,09
Informal sector (non-agricultural)	2,3	2,2	94	7	181	0,03
Agriculture	5,8	8,5	-1	-37	35	0,96
Private households	9,0	11,8	-28	-60	5	0,10
	8,0	7,2	4	-22	30	0,75
Eastern Cape						
Formal sector (non-agricultural)	2,7	2,7	-2	-107	104	0,98
Informal sector (non-agricultural)	4,0	3,6	59	-34	152	0,22
Agriculture	5,4	6,4	-48	-93	-3	0,04
Private households	14,7	20,1	-2	-37	31	0,87
	11,9	12,8	-10	-50	31	0,63
Northern Cape						
Formal sector (non-agricultural)	3,0	3,4	13	-13	39	0,32
Informal sector (non-agricultural)	5,7	5,5	17	-9	43	0,21
Agriculture	13,5	13,8	-1	-14	11	0,85
Private households	13,2	10,7	1	-20	21	0,93
	8,1	13,8	-4	-14	7	0,52
Free State						
Formal sector (non-agricultural)	2,3	2,0	-32	-77	14	0,17
Informal sector (non-agricultural)	2,7	2,7	-14	-51	24	0,48
Agriculture	7,6	7,0	-10	-33	12	0,37
Private households	10,1	9,1	-2	-18	15	0,84
	11,5	8,7	-6	-32	21	0,67
KwaZulu-Natal						
Formal sector (non-agricultural)	1,8	1,7	123	-1	246	0,05
Informal sector (non-agricultural)	2,7	2,9	90	-43	221	0,18
Agriculture	5,5	6,0	66	-14	146	0,11
Private households	15,5	18,1	-26	-73	21	0,28
	8,6	8,2	-7	-55	41	0,79

Appendix 3.4B: Sampling variability for the employed by province and sector

	Oct-Dec 2010 CV	Oct-Dec 2011 CV	Estimate	Lower 95%	Upper 95%	P-value
North West						
Formal sector (non-agricultural)	4,0	2,7	-40	-118	39	0,32
Informal sector (non-agricultural)	5,9	3,7	-40	-122	43	0,34
Agriculture	7,3	8,8	-1	-23	20	0,90
Private households	15,3	21,5	-1	-17	15	0,88
	10,3	11,6	2	-14	19	0,78
Gauteng						
Formal sector (non-agricultural)	1,3	1,2	162	17	307	0,03
Informal sector (non-agricultural)	1,9	1,8	156	-14	326	0,07
Agriculture	5,5	5,6	-55	-131	21	0,16
Private households	35,7	29,9	37	-4	78	0,08
	7,3	6,7	24	-39	87	0,46
Mpumalanga						
Formal sector (non-agricultural)	2,6	2,3	47	-18	112	0,16
Informal sector (non-agricultural)	4,0	3,9	19	-34	73	0,48
Agriculture	7,3	6,0	11	-26	49	0,56
Private households	9,7	13,0	1	-20	22	0,94
	7,6	9,3	15	-7	38	0,17
Limpopo						
Formal sector (non-agricultural)	3,5	3,8	23	-78	125	0,65
Informal sector (non-agricultural)	5,0	4,5	73	2	142	0,04
Agriculture	6,8	6,1	-52	-110	6	0,08
Private households	9,7	30,6	23	-34	80	0,42
	16,8	10,6	-20	-56	15	0,26

Appendix 3.5B: Sampling variability for the employed by sex and occupation

	Oct-Dec 2010 CV	Oct-Dec 2011 CV	Estimate	Lower 95%	Upper 95%	P-value
Both sexes	0,7	0,7	365	112	619	0,01
Manager	3,3	3,1	6	-95	106	0,91
Professional	3,4	4,5	-17	-101	66	0,68
Technician	2,8	2,7	29	-82	140	0,61
Clerk	2,8	2,5	89	-21	199	0,11
Sales and services	2,9	2,3	78	-61	218	0,27
Skilled agriculture	14,3	12,2	-6	-31	20	0,67
Craft and related trade	2,7	2,7	71	-42	186	0,22
Plant and machine operator	3,5	3,0	1	-105	105	1,00
Elementary	2,1	2,1	104	-70	280	0,24
Domestic worker	3,4	3,3	9	-72	90	0,83
Women	1,0	1,0	222	64	381	0,01
Manager	5,4	5,7	-17	-72	38	0,54
Professional	5,5	5,6	0	-52	52	1,00
Technician	3,4	3,6	27	-48	102	0,48
Clerk	3,2	3,0	81	-5	166	0,07
Sales and services	3,6	3,1	48	-34	128	0,25
Skilled agriculture	24,6	22,3	0	-13	13	1,00
Craft and related trade	6,6	7,2	-2	-38	34	0,91
Plant and machine operator	8,9	8,3	2	-37	42	0,91
Elementary	3,1	2,9	67	-32	167	0,18
Domestic worker	3,5	3,3	17	-61	94	0,67
Men	0,9	0,8	143	-23	308	0,09
Manager	3,7	3,7	23	-62	107	0,60
Professional	4,7	5,2	-17	-71	36	0,53
Technician	3,7	3,8	2	-67	71	0,96
Clerk	5,3	4,3	8	-55	72	0,79
Sales and services	3,9	3,1	32	-70	133	0,54
Skilled agriculture	15,3	12,7	-6	-25	14	0,57
Craft and related trade	3,1	2,8	74	-39	187	0,20
Plant and machine operator	3,5	3,3	-2	-94	90	0,96
Elementary	2,7	2,8	37	-94	168	0,58
Domestic worker	15,4	17,4	-8	-24	8	0,33