



Human Sciences Research Council
Lekgotla la Dinyakisišo tša Semahlale tša Setho
Raad vir Geesteswetenskaplike Navorsing
Umkhandlu Wezokucwaninga Ngesayensi Yesintu
Ibhunga Lophando Ngenzulu-Lwazi Kantu

USER GUIDE

SOUTH AFRICAN SOCIAL ATTITUDES SURVEY

AUGUST 2003

Introduction to the South African Social Attitudes Survey 2003.

The primary objective of SASAS is to design, develop and implement a conceptually and methodologically robust study of changing social attitudes and values in South Africa. In meeting this objective, the HSRC intends to position itself so as to be able to carefully and consistently monitor and explain changes in attitudes amongst various socio-demographic groupings.

It is intended that SASAS will explore a wide range of value changes, including the distribution and shape of racial attitudes and aspirations, attitudes towards democratic and constitutional issues, and the redistribution of resources and power.

Moreover, there is also an explicit interest in mapping changing attitudes towards some of the great moral issues that confront and are fiercely debated in South Africa, for instance abortion, gender issues, AIDS, crime and punishment, governance, service delivery, etc.

In sum, then, SASAS is intended to provide a unique long-term account of the social fabric of modern South Africa, and of how its changing political and institutional structures interact over time with changing social attitudes and values.

To accommodate the wide variety of topics that was included in the 2003 survey, two questionnaires were administered simultaneously. This will continue to occur in future phases of the SASAS survey. Apart from the standard set of demographic and background variables, each version of the questionnaire contains a harmonised core module that will remain constant from round to round, with the aim of monitoring change and continuity in a variety of socio-economic and socio-political variables. In addition, a number of themes will be accommodated on a rotational basis. This rotating element of the survey consists of two or more topic-specific modules in each round of interviewing and is directed at measuring a range of policy and academic concerns and issues that require more detailed examination at a specific point in time than the multi-topic core module would permit. In respect of the two SASAS questionnaires, the questions contained in the core module (demographics and core thematic issues) were asked of all 7 000 respondents, while the remaining rotating modules were asked of a half sample of approximately 3 500 respondents each. The two different versions of the questionnaire were administered concurrently in each of the chosen sampling areas.

Fieldworkers were required to complete a paper-based instrument while interviews were conducted face-to-face.

International Social Survey Programme

The International Social Survey Programme (ISSP) is run by a group of research organisations, each of which undertakes to field annually an agreed module of questions on a chosen topic area. SASAS 2003 represents the formalisation of South Africa's inclusion in the ISSP, the intention being to include the module in one of the SASAS questionnaires in each round of interviewing. Each module is chosen for repetition at intervals to allow comparisons both between countries (membership currently stands at 40) and over time. In 2003, the chosen subject was national identity, and the module was carried in version 2 of the questionnaire (Qs.152-203).

Thematic content:

Democracy, Identity, Public services, Moral issues, Crime, Voting, Demographics and other classificatory variables, Nature of families and family authority

Rotating modules:

Questionnaire 1: Poverty, Generational and gender attitudes and family/household violence,
Questionnaire 2: Communication, ISSP module – National Identity, Democracy part 2

The harmonised core module data are available as the 'combined dataset'. Questions for the core module were asked of both samples (3 500 respondents each - 7000) of which 4980 realised.

Sampling design

The South African Social Attitudes Survey has been designed to yield a representative sample of adults aged 16 and older. The sampling frame for the survey is the Human Sciences Research Council's (HSRC) Master Sample, which was designed in 2002 and consists of 1 000 primary sampling units (PSUs). The 2001 population census enumerator areas (EAs) were used as PSUs. These PSUs were drawn, with probability proportional to size, from a pre-census 2001 list of EAs provided by Statistics South Africa.

The Master Sample excludes special institutions (such as hospitals, military camps, old age homes, school and university hostels), recreational areas, industrial areas and vacant EAs. It therefore focuses on dwelling units or visiting points as secondary sampling units, which have been defined as 'separate (non-vacant) residential stands, addresses, structures, flats, homesteads, etc.'.

As the basis of the 2003 SASAS round of interviewing, a sub-sample of 500 PSUs was drawn from the HSRC's Master Sample. Three explicit stratification variables were used, namely province, geographic type and majority population group.

Within each stratum, the allocated number of PSUs was drawn using proportional to size probability sampling. In each of these drawn PSUs, two clusters of 11 dwelling units each were drawn. These 22 dwelling units in each drawn PSU were systematically grouped into three sub-samples of sizes seven, seven and eight respectively, to give the two SASAS samples and a client survey that was run in parallel.

Selection of individuals

Interviewers called at each visiting point selected from the HSRC Master Sample and listed all those eligible for inclusion in the sample, that is, all persons currently aged 16 or over and resident at the selected visiting point. The interviewer then selected one respondent using a random selection procedure based on a Kish grid.

Missing values within the dataset

Missing values in the data are indicated as 'System missing' denoted by a dot (.). In certain cases questions had to be skipped depending on the answer provided at a previous question and follow-up question(s) were left blank.

Inconsistencies in the data could be attributed to various aspects during fieldwork such as the following:

In some cases questions were not completed due to respondents refusing to answer particular questions, or due to fieldworker error or respondent / fieldworker fatigue and occasionally certain questions were misunderstood.

It is useful to run frequencies on all variables as a first stage in analysing the data to examine the distribution of responses and the proportion of missing values.

Weighting

The data were weighted to take account of the fact that not all the units covered in the survey had the same probability of selection. The weighting reflected the relative selection

probabilities of the individual at the three main stages of selection: visiting point (address), household and individual.

Visiting points in the Northern Cape and KwaZulu-Natal were oversampled, because of the small population size in the former and a desire to ensure a large enough Indian/Asian sample in the latter. Because of this, weights had to be applied to compensate for the greater probability of being selected.

The resulting weight is called 'benchwgt' in the half samples and 'combiwgt' in the full sample. The sample is weighted to represent the South African population older than 16 years.

All analysis should be done on weighted data.

Available Datasets

Datasets available in NESSTAR:

TAAMAA_Sasas2003_q1 (n=2497); 369 variables, 'benchwgt' (weight variable)
TAAMAA_Sasas2003_q2 (n=2483); 356 variables, 'benchwgt' (weight variable)
TAAMAA_Sasas2003_comb_wgt (n=4980); 269 variables, 'combiwgt' (weight variable)

To obtain more information about Nesstar and the use of weights when analyzing data, use the following link: <http://nesstar/webview/help/3-1.html>

SPSS datasets:

TAAMAA_SASAS2003_q1.sav (n=2497); 369 variables, 'benchwgt' (weight variable)
TAAMAA_SASAS2003_q2.sav (n=2483); 356 variables, 'benchwgt' (weight variable)
TAAMAA_SASAS2003_comb_wgt.sav (n=4980); 269 variables, 'combiwgt' (weight variable)

Stata datasets:

TAAMAA_SASAS2003_q1.dta (n=2497); 369 variables, 'benchwgt' (weight variable)
TAAMAA_SASAS2003_q2.dta (n=2483); 356 variables, 'benchwgt' (weight variable)
TAAMAA_SASAS2003_comb_wgt.dta (n=4980); 269 variables, 'combiwgt' (weight variable)

SAS datasets:

TAAMAA_SASAS2003_q1.sas7bdat (n=2497); 369 variables, 'benchwgt' (weight variable)
TAAMAA_SASAS2003_q2.sas7bdat (n=2483); 356 variables, 'benchwgt' (weight variable)
TAAMAA_SASAS2003_comb_wgt.sas7bdat (n=4980); 269 variables, 'combiwgt' (weight variable)

ASCII datasets:

TAAMAA_SASAS2003_q1.dat (n=2497); 369 variables, 'benchwgt' (weight variable)
TAAMAA_SASAS2003_q2.dat (n=2483); 356 variables, 'benchwgt' (weight variable)
TAAMAA_SASAS2003_comb_wgt.dat (n=4980); 269 variables, 'combiwgt' (weight variable)

The datasets contain a mix of discrete and continuous variables.

Lists and descriptions of all variables for the 3 different datasets are given on pages 10 to 30.

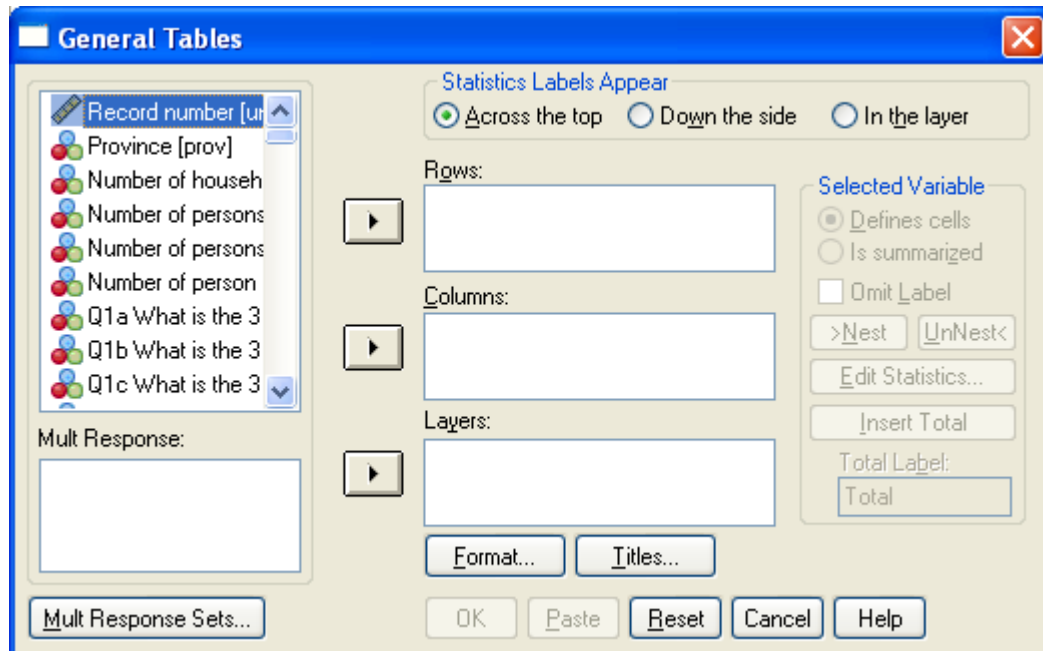
Analysing Multiple Response Questions:

Multiple Response Questions:

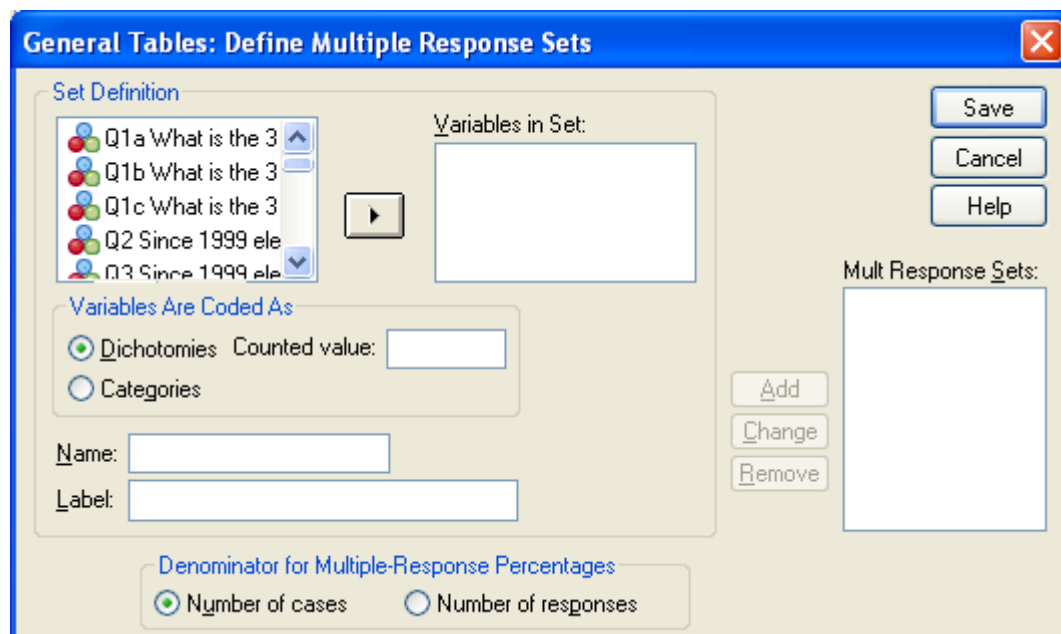
Multiple response questions: Questionnaire 1: Q1a-Q1c, Q35, Q319, Q320, Q322.

Multiple response questions: Questionnaire 2: Q1a-Q1c, Q35, Q306, Q307, Q309.

If you want to analyse multiple response questions to get an overview of similar responses, you can use SPSS multiple response set functionality under *Analyze, Tables, General Tables*:



Click *Mult Response Sets...*



Select the variables you will need for the multiple response set: e.g. Q1a, Q1b, Q1c and put in *Variables in set:* box by ticking the ► arrow.

General Tables: Define Multiple Response Sets

Set Definition

Variables in Set:

- Q1a What is the 3
- Q1b What is the 3
- Q1c What is the 3

Variables Are Coded As

☒ Dichotomies Counted value:

☐ Categories

Name:

Label:

Denominator for Multiple-Response Percentages

☒ Number of cases ☐ Number of responses

Buttons: Save, Cancel, Help, Add, Change, Remove

In this case *Categories* will be ticked, as answer options in Q1a to Q1c vary from code 1 to code 20.

(In the case where variables are coded as 'Yes/No', *Dichotomies* will be ticked and *Counted value* will be assigned in the box.)

Assign a variable name in the *Name* box (Q1mult) and a description in the *Label* box (Q1 Challenges facing South Africa today). Choose *Number of cases* or *Number of responses* at *Denominator for Multiple-Response Percentages*.

General Tables: Define Multiple Response Sets

Set Definition

Variables in Set:

- Q1a What is the 3
- Q1b What is the 3
- Q1c What is the 3

Variables Are Coded As

☐ Dichotomies Counted value:

☒ Categories

Name: Q1mult

Label: 1 Challenges facing South Africa today

Denominator for Multiple-Response Percentages

☒ Number of cases ☐ Number of responses

Buttons: Save, Cancel, Help, Add, Change, Remove

Click *Add*, then *Save*.

General Tables

Statistics Labels Appear
☒ Across the top ☐ Down the side ☐ In the layer

Record number [ur]
Province [prov]
Number of househ
Number of persons
Number of persons
Number of person
Q1a 'What is the 3
Q1b 'What is the 3
Q1c 'What is the 3

Rows:
Columns:
Layers:

Selected Variable
☒ Defines cells
☐ Is summarized
☐ Omit Label
>Nest <UnNest<
Edit Statistics...
Insert Total
Total Label:
Total

Mult Response:
Q1 Challenges facing

Format... Titles...

Mult Response Sets... OK Paste Reset Cancel Help

'Q1mult' is now a variable under *Mult Response* and can be used in a table.

Example of output for Multiple Response questions:

		Cases	Col Response %
Q1	HIV/AIDS	2293	46.1%
Challenges	Unemployment	3768	75.8%
facing South	Racism	310	6.2%
Africa today	Xenophobia	46	.9%
	Crime and safety	2357	47.4%
	Service provision/delivery	484	9.7%
	Affordable housing	559	11.2%
	Land reform issues	102	2.1%
	Human rights	115	2.3%
	Education	473	9.5%
	Economic and financial issues	276	5.5%
	Work-related issues	122	2.5%
	Family and youth issues	85	1.7%
	Religion and culture issues	57	1.1%
	Environmental issues	168	3.4%
	Political issues	101	2.0%
	Corruption	655	13.2%
	Poverty	2042	41.1%
	Other (specify)	282	5.7%
	Do not know	173	3.5%

Note that percentages do not add up to 100.0% when the denominator is *Number of cases*, as 1 person could choose 3 answer options. (The above is an example and calculations were not done on weighted data.)

Coding frame for Occupation

- 1 Legislators, senior officials, managers
- 2 Professionals
- 3 Technicians & associate professionals
- 4 Clerks
- 5 Service, shop & market sales workers
- 6 Skilled agricultural & fishery
- 7 Craft & related trades workers
- 8 Plant & machine operators & assemblers
- 9 Elementary occupations
- 10 Self-employed
- 11 Employed full time
- 12 Cannot categorise
- 92 Exile
- 93 Volunteer SAP, AIDS
- 94 Disabled
- 95 Pensioner
- 96 Unemployed
- 97 Student
- 98 Housewife
- 99 Dont Know

The following variables have been recoded/categorised:

Age:

Agegrp – Age in 10 year categories

- 16-24 years
- 25-34 years
- 35-44 years
- 45-54 years
- 55-64 years
- 65+ years

Agecat4 – Age in 4 categories

- 16-24 years
- 25-34 years
- 35-49 years
- 50+ years

Household income: (Q316 – Q1; Q303 – Q2);

Hhincomg - Total monthly household income – categorised

Code 1 = 1; No income

Code 2 = 2; R1 - R500

Code 3-5 = 3; R501 - R1500

Codes 6-8 = 4; R1501 - R5000

Codes 9-14 = 5; R5001+

Codes 15-16 = 6; Refuse/ uncertain/ don't know

Personal income: (Q317 – Q1; Q304 – Q2)

persincg - Personal total monthly income - categorised

Code 1 = 1; No income

Code 2 = 2; R1 - R500

Code 3-5 = 3; R501 - R1500

Codes 6-8 = 4; R1501 - R5000

Codes 9-14 = 5; R5001+

Codes 15-16 = 6; Refuse/ uncertain/ don't know

Education (Q271 – Q1; Q258 – Q2)

Educatg - Highest qualification you have ever completed

Code 0 = 0; No schooling

Codes 1-8=1; Primary

Codes 9-12, 14-15=2; Gr 8-11 or equivalent

Codes 13, 16-17=3; Matric or equivalent

Codes 18-20 = 4; Tertiary

Codes 21-22 = 5; Other/don't know

List of variables within the datasets

Variable information - SASAS 2003: Q1

Variable	Variable number	Description
uniqueid	1	Record number
prov	2	Province
hhnum	3	Number of households
pers16	4	Number of persons 16 years and older at visiting point
hhper	5	Number of persons in household
hhper16	6	Number of persons in household 16 years and older
q1a	7	Q1a What are the 3 most important challenges facing SA-1
q1b	8	Q1b What are the 3 most important challenges facing SA-2
q1c	9	Q1c What are the 3 most important challenges facing SA-3
q2	10	Q2 Since 1999 election life improved most people in SA
q3	11	Q3 Since 1999 election life improved for people like you
q4	12	Q4 In the next 5 years will life improve for most people in SA
q5	13	Q5 In the next 5 years will life improve for people like you
q6	14	Q6 Satisfied/Dissatisfied about democracy in SA
q7	15	Q7 Provincial government stop national government from becoming too strong
q8	16	Q8 Provincial government are a waste of taxpayers money
q9	17	Q9 Provincial government bring government closer to the people
q10	18	Q10 Provincial government assure that national government distribute resource fairly
q11	19	Q11 Trust/Distrust national government in SA
q12	20	Q12 Trust/Distrust courts in SA
q13	21	Q13 Trust/Distrust the Independent Electoral Commission
q14	22	Q14 Trust/Distrust your provincial government in SA
q15	23	Q15 Trust/Distrust the SABC
q16	24	Q16 Trust/Distrust the parliament of SA
q17	25	Q17 Trust/Distrust the SAP
q18	26	Q18 Trust/Distrust SA Defense force
q19	27	Q19 Trust/Distrust big business in SA
q20	28	Q20 Trust/Distrust your local government
q21	29	Q21 Trust/Distrust the church
q22	30	Q22 Do you have a ward committee in your neighbourhood
q23	31	Q23 Government handling supply water & sanitation in neighbourhood
q24	32	Q24 Government handling providing electricity in neighbourhood
q25	33	Q25 Government handling removal of refuse in neighbourhood
q26	34	Q26 Government handling affordable housing in neighbourhood
q27	35	Q27 Government handling access to health care in neighbourhood
q28	36	Q28 Government handling treatment of sexually transmitted infections
q29	37	Q29 Government handling crime in neighbourhood
q30	38	Q30 Government creating jobs in your neighbourhood
q31	39	Q31 Government handling land reform in neighbourhood
q32	40	Q32 People different racial groups don't trust/like each other
q33	41	Q33 People different racial groups will never trust/like each
q34	42	Q34 Racial groups in SA that you don't trust or like
q35a	43	Q35a Which racial groups don't you trust-first choice
q35b	44	Q35b Which racial groups don't you trust-second choice
q35c	45	Q35c Which racial groups don't you trust-third choice

Variable	Variable number	Description
q35d	46	Q35d Which racial groups don't you trust-fourth choice
q35e	47	Q35e Which racial groups don't you trust-fifth choice
q36	48	Q36 Do you feel attached to those that speak your language
q37	49	Q37 Do you feel attached to the same race group as you
q38	50	Q38 Do feel attached those who are same financial position
q39	51	Q39 Do you feel attached to those living in neighbourhood
q40	52	Q40 Are you discriminated against in this country
q41	53	Q41 Grounds of Discrimination-option 1
q42	54	Q42 Grounds of Discrimination-option 2
q43	55	Q43 Generally welcome to SA
q44	56	Q44 Which group would you least want to come live in SA
q45	57	Q45 The group presents a threat in terms of job opportunities
q46	58	Q46 The group presents a threat in terms of crime
q47	59	Q47 The group presents a threat to my culture & lifestyle
q48	60	Q48 Do you think that race relations improved in SA
q49	61	Q49 How often do you feel racially discriminated against
q50	62	Q50 Where has this racial discrimination happened to you
q51	63	Q51 Racism in SA-most whites in SA have racist attitudes
q52	64	Q52 Racism in SA-most coloured people have racist attitudes
q53	65	Q53 Racism in SA-most blacks in SA have racist attitudes
q54	66	Q54 Racism in SA-most Indian people have racist attitudes
q55	67	Q55 Government should give contracts & tax break-black businesses
q56	68	Q56 Redistribute land to black South Africans
q57	69	Q57 Pay money to victims apartheid for history discrimination
q58	70	Q58 Black treatment-racial quotas in national sports teams
q59	71	Q59 Black treatment-preferential, promotion of black employment
q60	72	Q60 Black treatment-preferential, promotion of women employment
q61	73	Q61 Compulsory school attendance up to what level
q62	74	Q62 All schools should contain children of different races
q63	75	Q63 All schools should contain children of different languages
q64	76	Q64 Different religion groups should be educated separately
q65	77	Q65 Girls and boys should be educated separately
q66	78	Q66 Economic well-off, poor children should educated together
q67	79	Q67 Aims of education improve chances of a good job
q68	80	Q68 Aims education enable critical & independent thinking
q69	81	Q69 Aims education is to keep children off the street
q70	82	Q70 Aims education to help children to become better citizens
q71	83	Q71 Aims education help children to get along with each other
q72	84	Q72 I respect teachers for their dedicated service to children
q73	85	Q73 Teachers should not damage their teaching role
q74	86	Q74 Main language in grade 1 to 3
q75	87	Q75 Main language in grade 4 to 9
q76	88	Q76 Main language in grade 10 to 12
q77	89	Q77 Main language in higher education
q78	90	Q78 Discipline in school: Reasoning/discussion with learner
q79	91	Q79 Discipline in school: Corporal punishment by teacher
q80	92	Q80 Discipline in school: Corporal punishment by principal
q81	93	Q81 Discipline in school: Physical labour like sweeping
q82	94	Q82 Discipline in school: Keep learner after school hours

Variable	Variable number	Description
q83	95	Q83 Discipline in school: Additional learning tasks
q84	96	Q84 Top priority when spending money on local high schools
q85	97	Q85 Compulsory religious sessions have no place school
q86	98	Q86 Educating girls to a high level is of no use
q87	99	Q87 Girls should be educated to operate on equal terms with boys
q88	100	Q88 The path a child should be encouraged to take after matric
q89	101	Q89 How would you rate your health at present
q90	102	Q90 Ever diagnosed with hypertension/high blood pressure
q91	103	Q91 Ever diagnosed with Tuberculosis (TB)
q92	104	Q92 Ever diagnosed with Malaria
q93	105	Q93 Ever diagnosed with Sexually transmitted infections
q94	106	Q94 Ever diagnosed with mental illness
q95	107	Q95 Anyone in household too sick/disabled to cope on their own
q96	108	Q96 Received nutritional supplements during past 12 months
q97	109	Q97 Exercise at least 15 minutes 3 times/week in past 12 months
q98	110	Q98 Do you drink alcohol
q99	111	Q99 Do you smoke cigarettes
q100	112	Q100 Do you smoke dagga (marijuana)
q101	113	Q101 Do you use mandrax
q102	114	Q102 Do you inject drugs into your body
q103	115	Q103 Advise to improve health: Not to smoke
q104	116	Q104 Advise to improve health: Drink less/no alcohol
q105	117	Q105 Advise to improve health: Take more exercise
q106	118	Q106 Advise to improve health: Eat more fruit and vegetables
q107	119	Q107 Advise to improve health: Eat less fatty food
q108	120	Q108 Advise to improve health: Take less sugar
q109	121	Q109 Advise to improve health: Try to reduce stress
q110	122	Q110 Advise to improve health: No drugs
q111	123	Q111 Advise to improve health: Other (specify)
q112	124	Q112 Personally know someone who you think/know died of AIDS
q113	125	Q113 Past year: attend funeral of person who is said died of AIDS
q114	126	Q114 Would sleep in same room as someone with HIV/AIDS
q115	127	Q115 Would share a meal with someone who is HIV positive
q116	128	Q116 Would talk to someone with HIV/AIDS
q117	129	Q117 Would treat a family member with HIV/AIDS well
q118	130	Q118 Would not get infected if in same room as infected person
q119	131	Q119 Should write in medical records if person is HIV positive
q120	132	Q120 Should write HIV/AIDS related death on death notification
q121	133	Q121 Satisfied with time patients wait before getting served
q122	134	Q122 Satisfied with way patients are treated by doctors
q123	135	Q123 Satisfied with way patients are treated by nurses
q124	136	Q124 Satisfied with availability of medicine at hospital/clinic
q125	137	Q125 Satisfied with emergency services such as ambulances
q126	138	Q126 Sexual relations between man and woman before marriage
q127	139	Q127 Sexual relations between two adults of same gender
q128	140	Q128 Is abortion wrong: strong chance for serious defect in baby
q129	141	Q129 Is abortion wrong: low income, cannot afford more children
q130	142	Q130 If convicted of murder, should be subject to death penalty
q131	143	Q131 Could not pay clothing/furniture account in last year

Variable	Variable number	Description
q132	144	Q132 Asked financial help from family in last year
q133	145	Q133 Asked financial help from friends in last year
q134	146	Q134 Borrowed from mashonisa or moneylender in last year
q135	147	Q135 How hard would it be to find R500 for emergency in one week
q136	148	Q136 Main source from which you would raise that money
q137	149	Q137 Responsibility in job important when deciding on earnings
q138	150	Q138 Skills or qualifications important when deciding on earnings
q139	151	Q139 Work experience important when deciding on earnings
q140	152	Q140 If supervise others important when deciding on earnings
q141	153	Q141 If children to support important when deciding on earnings
q142	154	Q142 How well one does job important when deciding on earnings
q143	155	Q143 How hard one works important when deciding on earnings
q144	156	Q144 To get to the top of business in SA, you have to be corrupt
q145	157	Q145 Higher incomes can pay for better health care
q146	158	Q146 Higher incomes can pay for better education for children
q147	159	Q147 Tension between poor and rich in SA
q148	160	Q148 Tension between employed and unemployed in SA
q149	161	Q149 Tension between management and workers in SA
q150	162	Q150 Tension between young and old in SA
q151	163	Q151 Tension between different races in SA
q152	164	Q152 Preference to continue living in your area
q153	165	Q153 Do people help each other in your neighbourhood
q154	166	Q154 Do people do things together in your neighbourhood
q155	167	Q155 How often is people aggressive in your neighbourhood
q156	168	Q156 How much burglary/theft in your neighbourhood
q157	169	Q157 Would you say that you and your family are:
q158	170	Q158 Satisfaction with the income of your household
q159	171	Q159 Satisfaction with your dwelling
q160	172	Q160 Satisfaction with how much work you can get
q161	173	Q161 Satisfaction with amount of paid holidays
q162	174	Q162 Satisfaction with your life as a whole these days
q163	175	Q163 My household is able to get enough food for its needs
q164	176	Q164 My households income is adequate for our needs
q165	177	Q165 The best things in life cannot be bought with money
q166	178	Q166 In South Africa incomes are too unequal
q167	179	Q167 Government should ensure everyone is provided for
q168	180	Q168 Governments duty is to provide employment
q169	181	Q169 Importance of family in your life
q170	182	Q170 Importance of friends in your life
q171	183	Q171 Importance of income in your life
q172	184	Q172 Importance of health in your life
q173	185	Q173 Importance of leisure time in your life
q174	186	Q174 Importance of paid work in your life
q175	187	Q175 Importance of religion in your life
q176	188	Q176 Importance of politics in your life
q177	189	Q177 When comparing income, who do you compare with
q178	190	Q178 Taking all things together, would you say you are
q179	191	Q179 Main reason for being not happy or not at all happy
q180	192	Q180 Household income compare to others in neighbourhood

Variable	Variable number	Description
q181	193	Q181 What is your current marital status
q182	194	Q182 Do you live together with a partner
q183	195	Q183 Child younger than 5 likely to suffer if mother works
q184	196	Q184 Men ought to do larger share of childcare than now
q185	197	Q185 One parent can bring up child as well as two can
q186	198	Q186 Children need the discipline that a father can give
q187	199	Q187 Children who grow up with only mother likely to be spoilt
q188	200	Q188 Who usually makes decisions on bringing up children
q189	201	Q189 Spoil children if pick them up/comfort them when crying
q190	202	Q190 If leaving children to cope on own, more independent
q191	203	Q191 Children should never be spanked when they misbehave
q192	204	Q192 Children who are crying are usually best ignored
q193	205	Q193 Always better to talk to child than to give a smack
q194	206	Q194 Children should be forced to accept parents are in charge
q195	207	Q195 Young who are hugged/kissed usually grow up to be sissies
q196	208	Q196 Last time you or partner smacked child once with a hand
q197	209	Q197 If it happened in the last week, how old was the child
q198	210	Q198 Last time you or partner beat child with strap, belt etc
q199	211	Q199 If it happened in the last week, how old was the child
q200	212	Q200 How often you and partner argue about housework
q201	213	Q201 Who makes decisions about choosing leisure activities
q202	214	Q202 Who makes decisions about furniture for the home
q203	215	Q203 Who makes decisions about buying children's clothes
q204	216	Q204 Who makes decisions about treatment for sick family
q205	217	Q205 Who makes decisions about shopping for groceries
q206	218	Q206 Who makes decisions about how to discipline children
q207	219	Q207 Job is alright, but most women want home and children
q208	220	Q208 Being a housewife is just as fulfilling as working for pay
q209	221	Q209 Having a job is best way for woman to be independent
q210	222	Q210 Man and woman should contribute to household income
q211	223	Q211 Woman's job: look after home/family rather than work
q212	224	Q212 Man who do not bring money into household is a loser
q213	225	Q213 Most men spend earnings on clothes and things for self
q214	226	Q214 In past year: threw thing at partner that could hurt
q215	227	Q215 In past year: partner threw thing at me that could hurt
q216	228	Q216 In past year: twisted partners arm or hair
q217	229	Q217 In past year: partner twisted my arm or hair
q218	230	Q218 In past year: pushed or shoved partner
q219	231	Q219 In past year: partner pushed or shoved me
q220	232	Q220 In past year: used knife or gun on partner
q221	233	Q221 In past year: partner used knife or gun on me
q222	234	Q222 In past year: punched or hit partner with something
q223	235	Q223 In past year: partner punched or hit me with something
q224	236	Q224 In past year: slammed partner against the wall
q225	237	Q225 In past year: partner slammed me against the wall
q226	238	Q226 In past year: slapped partner
q227	239	Q227 In past year: partner slapped me
q228	240	Q228 In past year: burned or scalded partner on purpose
q229	241	Q229 In past year: partner burned or scalded me on purpose

Variable	Variable number	Description
q230	242	Q230 In past year: kicked my partner
q231	243	Q231 In past year: partner kicked me
q232	244	Q232 Self-completed or completed by face-to-face interview
q233	245	Q233 In the last 6 months victim of: Residential burglary
q234	246	Q234 In the last 6 months victim of: Robbery-aggravating circumstances
q235	247	Q235 In the last 6 months victim of: Vehicle theft
q236	248	Q236 In the last 6 months victim of: Theft from vehicle
q237	249	Q237 In the last 6 months victim of: Stock theft
q238	250	Q238 In the last 6 months victim of: Hijacking or attempted hijacking
q239	251	Q239 In the last 6 months victim of: Murder
q240	252	Q240 In the last 6 months victim of: Gang related violence
q241	253	Q241 In the last 6 months victim of: Attempted murder
q242	254	Q242 In the last 6 months victim of: Common assault
q243	255	Q243 In the last 6 months victim of: Rape
q244	256	Q244 In the last 6 months victim of: Indecent assault
q245	257	Q245 Exposed to corruption by public officials in last 6 months
q246	258	Q246 Exposed to drug related crime in last 6 months
q247	259	Q247 Party voted for in the 1999 national election
q248	260	Q248 Main reason for your not voting in 1999 election
q249	261	Q249 Party planning to vote for in the next national election
q250	262	Q250 Main reason for thinking you will not vote in 2004 election
q251	263	Q251 To which other party do you feel close
q252	264	Q252 To which party do you feel most close
q253	265	Q253 How often do you talk about politics
q254	266	Q254 How close/distant do you feel to ANC
q255	267	Q255 How close/distant do you feel to DA/DP
q256	268	Q256 How close/distant do you feel to IFP
q257	269	Q257 How close/distant do you feel to NP
q258	270	Q258 Whether I vote or not makes no difference
q259	271	Q259 After elected all parties are the same, voting is pointless
q260	272	Q260 It is the duty of all citizens to vote
q261	273	Q261 Voting meaningless because no politician can be trusted
q262	274	Q262 Politics too complicated these days to understand
q263	275	Q263 Politicians guilty of bribery/corruption should resign
q264	276	Q264 Elected politicians should resign when changing party
q265	277	Q265 Government should have authority to prevent criticism
q266	278	Q266 Citizens should have right to form/join organisation freely
q267	279	Q267 Government should control information given to public
q268	280	Q268 Mass action acceptable way to express views
q270	281	Q270 Age of respondent in completed years
q271	282	Q271 Highest education level you have ever completed
q272	283	Q272 Highest education level your mother ever completed
q273	284	Q273 Highest education level your father ever completed
q274	285	Q274 Are you a citizen of South Africa
q275	286	Q275 Are you registered as a voter of South Africa
q276	287	Q276 What language do you speak mostly at home
q277	288	Q277 What is you mother tongue
q278	289	Q278 Current employment status
q279	290	Q279 Employment status of partner

Variable	Variable number	Description
q280	291	Q280 Your current occupation
q281	292	Q281 What is your partners occupation
q282	293	Q282 Fathers occupation when respondent was 14
q283	294	Q283 Mothers occupation when respondent was 14
q284	295	Q284 Do you consider yourself as belonging to any religion
q285	296	Q285 Please specify denomination
q286	297	Q286 Not special occasions: How often attend religious meetings
q287	298	Q287 Main material used for the roof of the dwelling
q288	299	Q288 Main material used for the walls of the dwelling
q289	300	Q289 Most often used source of drinking water by household
q290	301	Q290 Water household use each day for all purposes
q296	302	Q296 What kind of toilet does this household use
q297	303	Q297 Working landline telephone in your dwelling
q298	304	Q298 Do you have access to a computer
q299	305	Q299 Do you have access to the Internet
q300a	306	Q300a What Internet access is used for-1
q300b	307	Q300b What Internet access is used for-2
q300c	308	Q300c What Internet access is used for-3
q300d	309	Q300d What Internet access is used for-4
q300e	310	Q300e What Internet access is used for-5
q300f	311	Q300f What Internet access is used for-6
q301	312	Q301 Have a cell phone for personal or business use
q302	313	Q302 Household have - Fridge
q303	314	Q303 Household have - Freezer
q304	315	Q304 Household have - Polisher or vacuum cleaner
q305	316	Q305 Household have - Television
q306	317	Q306 Household have - Hi-fi or music centre (radio excl)
q307	318	Q307 Household have - Radio
q308	319	Q308 Household have - Microwave oven
q309	320	Q309 Household have - Washing machine
q310	321	Q310 Do you have the following - Grid Electricity
q311	322	Q311 Do you have the following - Hot running water
q312	323	Q312 Do you have the following - Domestic worker
q313	324	Q313 Do you have the following - At least one working car
q314	325	Q314 In the past year, time children under 7 went hungry
q315	326	Q315 In the past year, members of the household went hungry
q316	327	Q316 Total monthly household income before tax/deductions
q317	328	Q317 Personal total monthly income before tax/deductions
q318	329	Q318 Monthly income level minimal for household
q319a	330	Q319a Who do you consider to be part of your family-1
q319b	331	Q319b Who do you consider to be part of your family-2
q319c	332	Q319c Who do you consider to be part of your family-3
q319d	333	Q319d Who do you consider to be part of your family-4
q319e	334	Q319e Who do you consider to be part of your family-5
q319f	335	Q319f Who do you consider to be part of your family-6
q319g	336	Q319g Who do you consider to be part of your family-7
q319h	337	Q319h Who do you consider to be part of your family-8
q319i	338	Q319i Who do you consider to be part of your family-9
q319j	339	Q319j Who do you consider to be part of your family-10

Variable	Variable number	Description
q319k	340	Q319k Who do you consider to be part of your family-11
q319l	341	Q319l Who do you consider to be part of your family-12
q319m	342	Q319m Who do you consider to be part of your family-13
q319n	343	Q319n Who do you consider to be part of your family-14
q320a	344	Q320a Why do you say that these people are family-1
q320b	345	Q320b Why do you say that these people are family-2
q320c	346	Q320c Why do you say that these people are family-3
q320d	347	Q320d Why do you say that these people are family-4
q320e	348	Q320e Why do you say that these people are family-5
q320f	349	Q320f Why do you say that these people are family-6
q320g	350	Q320g Why do you say that these people are family-7
q321	351	Q321 Person who holds final position of authority in family
q322a	352	Q322a If yes, what is the primary basis of their authority-1
q322b	353	Q322b If yes, what is the primary basis of their authority-2
q322c	354	Q322c If yes, what is the primary basis of their authority-3
q322d	355	Q322d If yes, what is the primary basis of their authority-4
q322e	356	Q322e If yes, what is the primary basis of their authority-5
q322f	357	Q322f If yes, what is the primary basis of their authority-6
q323	358	Q323 If person could no longer fulfill this role, who would
q324	359	Q324 Today and last few days: would you say that you are
geo_type	360	Environmental milieu
eatype	361	EATYPE
sex	362	Gender
race	363	Race of respondent
agegrp	364	Age in 10 year categories
agecat4g	365	Age 4 categories
hhincomg	366	Total monthly household income - categorised
persincg	367	Personal total monthly income - categorised
educatg	368	Highest qualification you have ever completed
benchwtg	369	Benchmark weight

Variable information - SASAS 2003: Q2

Variable	Variable number	Description
uniqueid	1	Record number
prov	2	Province
hhnum	3	Number of households
pers16	4	Number of persons 16 years and older at visiting point
hhper	5	Number of persons in household
hhper16	6	Number of persons in household 16 years and older
q1a	8	Q1a What are the 3 most important challenges facing SA-1
q1b	9	Q1b What are the 3 most important challenges facing SA-2
q1c	10	Q1c What are the 3 most important challenges facing SA-3
q2	11	Q2 Since 1999 election life improved most people in SA
q3	12	Q3 Since 1999 election life improved for people like you
q4	13	Q4 In the next 5 years will life improve for most people in SA
q5	14	Q5 In the next 5 years will life improve for people like you
q6	15	Q6 Satisfied/Dissatisfied about democracy in SA

Variable	Variable number	Description
q7	16	Q7 Provincial government stop national government from becoming to strong
q8	17	Q8 Provincial government are a waste of taxpayers money
q9	18	Q9 Provincial government bring government closer to the people
q10	19	Q10 Provincial government assure that national government distribute resource fairly
q11	20	Q11 Trust/Distrust national government in SA
q12	21	Q12 Trust/Distrust courts in SA
q13	22	Q13 Trust/Distrust the Independent Electoral Commission
q14	23	Q14 Trust/Distrust your provincial government in SA
q15	24	Q15 Trust/Distrust the SABC
q16	25	Q16 Trust/Distrust the parliament of SA
q17	26	Q17 Trust/Distrust the SAP
q18	27	Q18 Trust/Distrust SA Defense force
q19	28	Q19 Trust/Distrust big business in SA
q20	29	Q20 Trust/Distrust your local government
q21	30	Q21 Trust/Distrust the church
q22	31	Q22 Do you have a ward committee in your neighbourhood
q23	32	Q23 Government handling supply water & sanitation in neighbourhood
q24	33	Q24 Government handling providing electricity in neighbourhood
q25	34	Q25 Government handling removal of refuse in neighbourhood
q26	35	Q26 Government handling affordable housing in neighbourhood
q27	36	Q27 Government handling access to health care in neighbourhood
q28	37	Q28 Government handling treatment of sexually transmitted infections
q29	38	Q29 Government handling crime in neighbourhood
q30	39	Q30 Government creating jobs in your neighbourhood
q31	40	Q31 Government handling land reform in neighbourhood
q32	41	Q32 People different racial groups don't trust/like each other
q33	42	Q33 People different racial groups will never trust/like each
q34	43	Q34 Racial groups in SA that you don't trust or like
q35a	44	Q35a Which racial groups don't you trust-first choice
q35b	45	Q35b Which racial groups don't you trust-second choice
q35c	46	Q35c Which racial groups don't you trust-third choice
q35d	47	Q35d Which racial groups don't you trust-fourth choice
q35e	48	Q35e Which racial groups don't you trust-fifth choice
q36	49	Q36 Do you feel attached to those that speak your language
q37	50	Q37 Do you feel attached to the same race group as you
q38	51	Q38 Do feel attached those who are same financial position
q39	52	Q39 Do you feel attached to those living in neighbourhood
q40	53	Q40 Are you discriminated against in this country
q41	54	Q41 Grounds of Discrimination-option 1
q42	55	Q42 Grounds of Discrimination-option 2
q43	56	Q43 Generally welcome to SA
q44	57	Q44 Which group would you least want to come live in SA
q45	58	Q45 The group presents a threat in terms of job opportunities
q46	59	Q46 The group presents a threat in terms of crime
q47	60	Q47 The group presents a threat to my culture & lifestyle
q48	61	Q48 Do you think that race relations improved in SA
q49	62	Q49 How often do you feel racially discriminated against
q50	63	Q50 Where has this racial discrimination happened to you

Variable	Variable number	Description
q51	64	Q51 Racism in SA-most whites in SA have racist attitudes
q52	65	Q52 Racism in SA-most coloured people have racist attitudes
q53	66	Q53 Racism in SA-most blacks in SA have racist attitudes
q54	67	Q54 Racism in SA-most Indian people have racist attitudes
q55	68	Q55 Government should give contracts & tax break-black businesses
q56	69	Q56 Redistribute land to black South Africans
q57	70	Q57 Pay money to victims apartheid for history discrimination
q58	71	Q58 Black treatment-racial quotas in national sports teams
q59	72	Q59 Black treatment-preferential promotion of black employment
q60	73	Q60 Black treatment-preferential promotion of women employment
q61	74	Q61 Compulsory school attendance up to what level
q62	75	Q62 All schools should contain children of different races
q63	76	Q63 All schools should contain children of different languages
q64	77	Q64 Different religion groups should be educated separately
q65	78	Q65 Girls and boys should be educated separately
q66	79	Q66 Economic well-off and poor children should educated together
q67	80	Q67 Aims of education improve chances of a good job
q68	81	Q68 Aims education enable critical & independent thinking
q69	82	Q69 Aims education is to keep children off the street
q70	83	Q70 Aims education to help children to become better citizens
q71	84	Q71 Aims education help children to get along with each other
q72	85	Q72 I respect teachers for their dedicated service to children
q73	86	Q73 Teachers should not damage their teaching role
q74	87	Q74 Main language in grade 1 to 3
q75	88	Q75 Main language in grade 4 to 9
q76	89	Q76 Main language in grade 10 to 12
q77	90	Q77 Main language in higher education
q78	91	Q78 Discipline in school: Reasoning/discussion with learner
q79	92	Q79 Discipline in school: Corporal punishment by teacher
q80	93	Q80 Discipline in school: Corporal punishment by principal
q81	94	Q81 Discipline in school: Physical labour like sweeping
q82	95	Q82 Discipline in school: Keep learner after school hours
q83	96	Q83 Discipline in school: Additional learning tasks
q84	97	Q84 Top priority when spending money on local high schools
q85	98	Q85 Compulsory religious sessions have no place school
q86	99	Q86 Educating girls to a high level is of no use
q87	100	Q87 Girls should be educated to operate on equal terms with boys
q88	101	Q88 The path a child should be encouraged to take after matric
q89	102	Q89 How would you rate your health at present
q90	103	Q90 Ever diagnosed with hypertension/high blood pressure
q91	104	Q91 Ever diagnosed with Tuberculosis (TB)
q92	105	Q92 Ever diagnosed with Malaria
q93	106	Q93 Ever diagnosed with Sexually transmitted infections
q94	107	Q94 Ever diagnosed with mental illness
q95	108	Q95 Anyone in household too sick/disabled to cope on their own
q96	109	Q96 Received nutritional supplements during past 12 months
q97	110	Q97 Exercise at least 15 minutes 3 times/week in past 12 months
q98	111	Q98 Do you drink alcohol
q99	112	Q99 Do you smoke cigarettes

Variable	Variable number	Description
q100	113	Q100 Do you smoke dagga (marijuana)
q101	114	Q101 Do you use mandrax
q102	115	Q102 Do you inject drugs into your body
q103	116	Q103 Advise to improve health: Not to smoke
q104	117	Q104 Advise to improve health: Drink less/no alcohol
q105	118	Q105 Advise to improve health: Take more exercise
q106	119	Q106 Advise to improve health: Eat more fruit and vegetables
q107	120	Q107 Advise to improve health: Eat less fatty food
q108	121	Q108 Advise to improve health: Take less sugar
q109	122	Q109 Advise to improve health: Try to reduce stress
q110	123	Q110 Advise to improve health: No drugs
q111	124	Q111 Advise to improve health: Other (specify)
q112	125	Q112 Personally know someone who you think/know died of AIDS
q113	126	Q113 Past year: attend funeral of person who is said died of AIDS
q114	127	Q114 Would sleep in same room as someone with HIV/AIDS
q115	128	Q115 Would share a meal with someone who is HIV positive
q116	129	Q116 Would talk to someone with HIV/AIDS
q117	130	Q117 Would treat a family member with HIV/AIDS well
q118	131	Q118 Would not get infected if in same room as infected person
q119	132	Q119 Should write in medical records if person is HIV positive
q120	133	Q120 Should write HIV/AIDS related death on death notification
q121	134	Q121 Satisfied with time patients wait before getting served
q122	135	Q122 Satisfied with way patients are treated by doctors
q123	136	Q123 Satisfied with way patients are treated by nurses
q124	137	Q124 Satisfied with availability of medicine at hospital/clinic
q125	138	Q125 Satisfied with emergency services such as ambulances
q126	139	Q126 Sexual relations between man and woman before marriage
q127	140	Q127 Sexual relations between two adults of same gender
q128	141	Q128 Is abortion wrong: strong chance for serious defect in baby
q129	142	Q129 Is abortion wrong: low income, cannot afford more children
q130	143	Q130 If convicted of murder, should be subject to death penalty
q131	144	Q131 Single main source of community news
q132	145	Q132 Single main source of national news
q133	146	Q133 Single main source of international news
q134	147	Q134 Prefer local or foreign-made programmes on television
q135	148	Q135 Prefer local or foreign news programmes on television
q136	149	Q136 Too much sex on television or not bothered about it
q137	150	Q137 Too much violence on television or not bothered about it
q138	151	Q138 Too much nudity on television or not bothered about it
q139	152	Q139 Too much swearing on television or not bothered about it
q140	153	Q140 Too much prejudice on television or not bothered about it
q141	154	Q141 Read at least one complete book in the last month
q142	155	Q142 Too many American programmes on TV or not bothered
q143	156	Q143 Used cellphone to make an outgoing call in past week
q144	157	Q144 Received a call on a cellphone in past week
q145	158	Q145 Used cellphone to send text message in past week
q146	159	Q146 Received text message on a cellphone in past week
q147	160	Q147 No cellphone - cannot afford it or do not want it
q148	161	Q148 Hours on an average working day spend watching TV

Variable	Variable number	Description
q149	162	Q149 Hours on average working day spend listening radio
q150	163	Q150 Hours on average working day reading newspaper
q151	164	Q151 Hours on average working day spend using internet
q152	165	Q152 Most important to you in describing who you are
q153	166	Q153 Second most important to you in describing who you are
q154	167	Q154 Third most important to you in describing who you are
q155	168	Q155 How attached do you feel to your town or city or village
q156	169	Q156 How attached do you feel to your province
q157	170	Q157 How attached do you feel to South Africa
q158	171	Q158 How attached do you feel to Africa
q159	172	Q159 Truly South African have been born in South Africa
q160	173	Q160 Truly South African have South African citizenship
q161	174	Q161 Truly South African lived in SA for most of ones life
q162	175	Q162 Truly South African speak at least one official language
q163	176	Q163 Truly South African member of the Christian church
q164	177	Q164 Truly South African respect SA political institutions/laws
q165	178	Q165 Truly South African feel South African
q166	179	Q166 Truly South African have South African ancestry
q167	180	Q167 Rather a citizen of South Africa than any other country
q168	181	Q168 Some things make me feel ashamed of South Africa
q169	182	Q169 World a better place if countries were more like SA
q170	183	Q170 South Africa better country than most other countries
q171	184	Q171 Should support country even if country is in the wrong
q172	185	Q172 Country does well in international sports: proud to be SA
q173	186	Q173 Often less proud of South Africa than I would like to be
q174	187	Q174 Proud of SA: The way democracy works
q175	188	Q175 Proud of SA: Its political influence in the world
q176	189	Q176 Proud of SA: South Africa's economic achievements
q177	190	Q177 Proud of SA: Its social security system
q178	191	Q178 Proud of SA: Scientific and technological achievements
q179	192	Q179 Proud of SA: Its achievements in sports
q180	193	Q180 Proud of SA: Its achievements in the arts and literature
q181	194	Q181 Proud of SA: South Africa's armed forces
q182	195	Q182 Proud of SA: Its history
q183	196	Q183 Proud of SA: Fair and equal treatment of all groups
q184	197	Q184 SA should limit import to protect its national economy
q185	198	Q185 SA should follow own interests, even if leads to conflict
q186	199	Q186 Foreigners should not be allowed to buy land in SA
q187	200	Q187 SA television should give preference to SA programmes
q188	201	Q188 Businesses from other countries damage local businesses
q189	202	Q189 SA should follow decisions of international organizations
q190	203	Q190 International organizations take too much power from SA
q191	204	Q191 Foreign films exposure etc damage national/local culture
q192	205	Q192 Internet make info available to more people worldwide
q193	206	Q193 Impossible if not sharing SA traditions to become fully SA
q194	207	Q194 Minorities given assistance to preserve customs/traditions
q195	208	Q195 Racial/ethnic groups maintain customs/blend together
q196	209	Q196 One or both parents SA citizens at time of your birth
q197	210	Q197 Born in SA, parents not citizens, may become citizen

Variable	Variable number	Description
q198	211	Q198 Born abroad, parent citizen, may become citizens
q199	212	Q199 Legal immigrants to SA same rights as SA citizens
q200	213	Q200 SA take stronger measures to exclude illegal immigrants
q201	214	Q201 How proud are you to being South African
q202	215	Q202 Statement closer to your viewpoint
q203	216	Q203 How close do you feel to your ethnic group
q204	217	Q204 In the last 6 months victim of: Residential burglary
q205	218	Q205 In the last 6 months victim of: Robbery-aggravating circumstances
q206	219	Q206 In the last 6 months victim of: Vehicle theft
q207	220	Q207 In the last 6 months victim of: Theft from vehicle
q208	221	Q208 In the last 6 months victim of: Stock theft
q209	222	Q209 In the last 6 months victim of: Hijacking or attempted hijacking
q210	223	Q210 In the last 6 months victim of: Murder
q211	224	Q211 In the last 6 months victim of: Gang related violence
q212	225	Q212 In the last 6 months victim of: Attempted murder
q213	226	Q213 In the last 6 months victim of: Common assault
q214	227	Q214 In the last 6 months victim of: Rape
q215	228	Q215 In the last 6 months victim of: Indecent assault
q216	229	Q216 Exposed to corruption by public officials in last 6 months
q217	230	Q217 Exposed to drug related crime in last 6 months
q218	231	Q218 Living conditions in neighbourhood will improve/get worse in 5 years
q219	232	Q219 Way local government/municipality is performing its job
q220	233	Q220 Way province is performing its job at present
q221	234	Q221 Way South Africa is being governed at present
q222	235	Q222 Easy/difficult to influence decisions that affect the country
q223	236	Q223 Easy/difficult to influence decisions that affect province
q224	237	Q224 Easy/difficult to influence municipal decisions on neighbourhood
q225	238	Q225 Supporter or active member: Political party / grouping
q226	239	Q226 Supporter or active member: Trade union
q227	240	Q227 Supporter or active member: Church/religious organisation
q228	241	Q228 Supporter or active member: Women's organisation
q229	242	Q229 Supporter or active member: Community organisation
q230	243	Q230 Supporter or active member: Sports association / club
q231	244	Q231 Supporter or active member: Youth group
q232	245	Q232 Party voted for in the 1999 national election
q233	246	Q233 Main reason for your not voting in 1999 election
q234	247	Q234 Party planning to vote for in the next national election
q235	248	Q235 Main reason for thinking you will not vote in 2004 election
q236	249	Q236 To which other party do you feel close
q237	250	Q237 To which party do you feel most close
q238	251	Q238 How often do you talk about politics
q239	252	Q239 How close/distant do you feel to ANC
q240	253	Q240 How close/distant do you feel to DA/DP
q241	254	Q241 How close/distant do you feel to IFP
q242	255	Q242 How close/distant do you feel to NNP
q243	256	Q243 Whether I vote or not makes no difference
q244	257	Q244 After elected all parties are the same, voting is pointless
q245	258	Q245 It is the duty of all citizens to vote
q246	259	Q246 Voting meaningless because no politician can be trusted

Variable	Variable number	Description
q247	260	Q247 Politics too complicated these days to understand
q248	261	Q248 Politicians guilty of bribery/corruption should resign
q249	262	Q249 Elected politicians should resign when changing party
q250	263	Q250 Government should have authority to prevent criticism
q251	264	Q251 Citizens should have right to form/join organisation freely
q252	265	Q252 Government should control information given to public
q253	266	Q253 Mass action acceptable way to express views
q255	267	Q255 Age of respondent in completed years
q256	268	Q256 Current marital status
q257	269	Q257 Live together with a partner
q258	270	Q258 Highest education level you have ever completed
q259	271	Q259 Highest education level your mother ever completed
q260	272	Q260 Highest education level your father ever completed
q261	273	Q261 Are you a citizen of South Africa
q262	274	Q262 Are you registered as a voter of South Africa
q263	275	Q263 What language do you speak mostly at home
q264	276	Q264 What is your mother tongue
q265	277	Q265 Current employment status
q266	278	Q266 Employment status of partner
q267	279	Q267 Your current occupation
q268	280	Q268 What is your partner's occupation
q269	281	Q269 Father's occupation when respondent was 14
q270	282	Q270 Mother's occupation when respondent was 14
q271	283	Q271 Do you consider yourself as belonging to any religion
q272	284	Q272 Please specify denomination
q273	285	Q273 Not special occasions: How often attend religious meetings
q274	286	Q274 Main material used for the roof of the dwelling
q275	287	Q275 Main material used for the walls of the dwelling
q276	288	Q276 Most often used source of drinking water by household
q277	289	Q277 Water household use each day for all purposes
q283	290	Q283 What kind of toilet does this household use
q284	291	Q284 Working landline telephone in your dwelling
q285	292	Q285 Do you have access to a computer
q286	293	Q286 Do you have access to the Internet
q287a	294	Q287a What Internet access is used for-1
q287b	295	Q287b What Internet access is used for-2
q287c	296	Q287c What Internet access is used for-3
q287d	297	Q287d What Internet access is used for-4
q287e	298	Q287e What Internet access is used for-5
q287f	299	Q287f What Internet access is used for-6
q288	300	Q288 Have a cell phone for personal or business use
q289	301	Q289 Household have - Fridge
q290	302	Q290 Household have - Freezer
q291	303	Q291 Household have - Polisher or vacuum cleaner
q292	304	Q292 Household have - Television
q293	305	Q293 Household have - Hi-fi or music centre (radio excl)
q294	306	Q294 Household have - Radio
q295	307	Q295 Household have - Microwave oven
q296	308	Q296 Household have - Washing machine

Variable	Variable number	Description
q297	309	Q297 Do you have the following - Grid Electricity
q298	310	Q298 Do you have the following - Hot running water
q299	311	Q299 Do you have the following - Domestic worker
q300	312	Q300 Do you have the following - At least one working car
q301	313	Q301 In the past year, time children under 7 went hungry
q302	314	Q302 In the past year, members of the household went hungry
q303	315	Q303 Total monthly household income before tax/deductions
q304	316	Q304 Personal total monthly income before tax/deductions
q305	317	Q305 Monthly income level minimal for household
q306a	318	Q306a Who do you consider to be part of your family-1
q306b	319	Q306b Who do you consider to be part of your family-2
q306c	320	Q306c Who do you consider to be part of your family-3
q306d	321	Q306d Who do you consider to be part of your family-4
q306e	322	Q306e Who do you consider to be part of your family-5
q306f	323	Q306f Who do you consider to be part of your family-6
q306g	324	Q306g Who do you consider to be part of your family-7
q306h	325	Q306h Who do you consider to be part of your family-8
q306i	326	Q306i Who do you consider to be part of your family-9
q306j	327	Q306j Who do you consider to be part of your family-10
q306k	328	Q306k Who do you consider to be part of your family-11
q306l	329	Q306l Who do you consider to be part of your family-12
q306m	330	Q306m Who do you consider to be part of your family-13
q306n	331	Q306n Who do you consider to be part of your family-14
q307a	332	Q307a Why do you say that these people are family-1
q307b	333	Q307b Why do you say that these people are family-2
q307c	334	Q307c Why do you say that these people are family-3
q307d	335	Q307d Why do you say that these people are family-4
q307e	336	Q307e Why do you say that these people are family-5
q307f	337	Q307f Why do you say that these people are family-6
q307g	338	Q307g Why do you say that these people are family-7
q308	339	Q308 Person who holds final position of authority in family
q309a	340	Q309a If yes, what is the primary basis of their authority-1
q309b	341	Q309b If yes, what is the primary basis of their authority-2
q309c	342	Q309c If yes, what is the primary basis of their authority-3
q309d	343	Q309d If yes, what is the primary basis of their authority-4
q309e	344	Q309e If yes, what is the primary basis of their authority-5
q309f	345	Q309f If yes, what is the primary basis of their authority-6
q310	346	Q310 If person could no longer fulfill this role, who would
q311	347	Q311 Today and last few days: would you say that you are
geo_type	348	Environmental milieu
eatype	349	EA type
sex	350	Gender
race	351	Race of respondent
agegrp	352	Age in 10 year categories
agecat4g	353	Age in 4 groups
hhincomg	354	Total monthly household income - categorised
persincg	355	Personal total monthly income - categorised
educatg	356	Highest qualification you have ever completed

Variable	Variable number	Description
benchwgt	357	Benchmark weight

Variable information - SASAS 2003: Combined dataset

Variable	Variable number	Description
uniqueid	1	Record number
prov	2	Province
hhnum	3	Number of households
pers16	4	Number of persons 16 years and older in visiting point
hhper	5	Number of persons in household
hhper16	6	Number of persons in household 16 years and older
q1a	7	Q1a What are the 3 most important challenges facing SA-1
q1b	8	Q1b What are the 3 most important challenges facing SA-2
q1c	9	Q1c What are the 3 most important challenges facing SA-3
q2	10	Q2 Since 1999 election life improved most people in SA
q3	11	Q3 Since 1999 election life improved for people like you
q4	12	Q4 In the next 5 years will life improve for most people in SA
q5	13	Q5 In the next 5 years will life improve for people like you
q6	14	Q6 Satisfied/Dissatisfied about democracy in SA
q7	15	Q7 Provincial government stop national government from becoming too strong
q8	16	Q8 Provincial government are a waste of taxpayers money
q9	17	Q9 Provincial government bring government closer to the people
q10	18	Q10 Provincial government assure that national government distribute resource fairly
q11	19	Q11 Trust/Distrust national government in SA
q12	20	Q12 Trust/Distrust courts in SA
q13	21	Q13 Trust/Distrust the Independent Electoral Commission
q14	22	Q14 Trust/Distrust your provincial government in SA
q15	23	Q15 Trust/Distrust the SABC
q16	24	Q16 Trust/Distrust the parliament of SA
q17	25	Q17 Trust/Distrust the SAP
q18	26	Q18 Trust/Distrust SA Defense force
q19	27	Q19 Trust/Distrust big business in SA
q20	28	Q20 Trust/Distrust your local government
q21	29	Q21 Trust/Distrust the church
q22	30	Q22 Do you have a ward committee in your neighbourhood
q23	31	Q23 Government handling supply water & sanitation in neighbourhood
q24	32	Q24 Government handling providing electricity in neighbourhood
q25	33	Q25 Government handling removal of refuse in neighbourhood
q26	34	Q26 Government handling affordable housing in neighbourhood
q27	35	Q27 Government handling access to health care in neighbourhood
q28	36	Q28 Government handling treatment of sexually transmitted infections
q29	37	Q29 Government handling crime in neighbourhood
q30	38	Q30 Government creating jobs in your neighbourhood
q31	39	Q31 Government handling land reform in neighbourhood
q32	40	Q32 People different racial groups don't trust/like each other
q33	41	Q33 People different racial groups will never trust/like each other
q34	42	Q34 Racial groups in SA that you don't trust or like

Variable	Variable number	Description
q35a	43	Q35a Which racial groups don't you trust-first choice
q35b	44	Q35b Which racial groups don't you trust-second choice
q35c	45	Q35c Which racial groups don't you trust-third choice
q35d	46	Q35d Which racial groups don't you trust-fourth choice
q35e	47	Q35e Which racial groups don't you trust-fifth choice
q36	48	Q36 Do you feel attached to those that speak your language
q37	49	Q37 Do you feel attached to the same race group as you
q38	50	Q38 Do feel attached those who are same financial position
q39	51	Q39 Do you feel attached to those living in neighbourhood
q40	52	Q40 Are you discriminated against in this country
q41	53	Q41 Grounds of Discrimination-option 1
q42	54	Q42 Grounds of Discrimination-option 2
q43	55	Q43 Generally welcome to SA
q44	56	Q44 Which group would you least want to come live in SA
q45	57	Q45 The group presents a threat in terms of job opportunities
q46	58	Q46 The group presents a threat in terms of crime
q47	59	Q47 The group presents a threat to my culture & lifestyle
q48	60	Q48 Do you think that race relations improved in SA
q49	61	Q49 How often do you feel racially discriminated against
q50	62	Q50 Where has this racial discrimination happened to you
q51	63	Q51 Racism in SA-most whites in SA have racist attitudes
q52	64	Q52 Racism in SA-most coloured people have racist attitudes
q53	65	Q53 Racism in SA-most blacks in SA have racist attitudes
q54	66	Q54 Racism in SA-most Indian people have racist attitudes
q55	67	Q55 Government should give contracts & tax break-black businesses
q56	68	Q56 Redistribute land to black South Africans
q57	69	Q57 Pay money to victims apartheid for history discrimination
q58	70	Q58 Black treatment-racial quotas in national sports teams
q59	71	Q59 Black treatment-preferential, promotion of black employment
q60	72	Q60 Black treatment-preferential, promotion of women employment
q61	73	Q61 Compulsory school attendance up to what level
q62	74	Q62 All schools should contain children of different races
q63	75	Q63 All schools should contain children of different languages
q64	76	Q64 Different religion groups should be educated separately
q65	77	Q65 Girls and boys should be educated separately
q66	78	Q66 Economic well-off, poor children should educated together
q67	79	Q67 Aims of education improve chances of a good job
q68	80	Q68 Aims education enable critical & independent thinking
q69	81	Q69 Aims education is to keep children off the street
q70	82	Q70 Aims education to help children to become better citizens
q71	83	Q71 Aims education help children to get along with each other
q72	84	Q72 I respect teachers for their dedicated service to children
q73	85	Q73 Teachers should not damage their teaching role
q74	86	Q74 Main language in grade 1 to 3
q75	87	Q75 Main language in grade 4 to 9
q76	88	Q76 Main language in grade 10 to 12
q77	89	Q77 Main language in higher education
q78	90	Q78 Discipline in school: Reasoning/discussion with learner
q79	91	Q79 Discipline in school: Corporal punishment by teacher

Variable	Variable number	Description
q80	92	Q80 Discipline in school: Corporal punishment by principal
q81	93	Q81 Discipline in school: Physical labour like sweeping
q82	94	Q82 Discipline in school: Keep learner after school hours
q83	95	Q83 Discipline in school: Additional learning tasks
q84	96	Q84 Top priority when spending money on local high schools
q85	97	Q85 Compulsory religious sessions have no place school
q86	98	Q86 Educating girls to a high level is of no use
q87	99	Q87 Girls should be educated to operate on equal terms with boys
q88	100	Q88 The path a child should be encouraged to take after matric
q89	101	Q89 How would you rate your health at present
q90	102	Q90 Ever diagnosed with hypertension/high blood pressure
q91	103	Q91 Ever diagnosed with Tuberculosis (TB)
q92	104	Q92 Ever diagnosed with Malaria
q93	105	Q93 Ever diagnosed with Sexually transmitted infections
q94	106	Q94 Ever diagnosed with mental illness
q95	107	Q95 Anyone in household too sick/disabled to cope on their own
q96	108	Q96 Received nutritional supplements during past 12 months
q97	109	Q97 Exercise at least 15 minutes 3 times/week in past 12 months
q98	110	Q98 Do you drink alcohol
q99	111	Q99 Do you smoke cigarettes
q100	112	Q100 Do you smoke dagga (marijuana)
q101	113	Q101 Do you use mandrax
q102	114	Q102 Do you inject drugs into your body
q103	115	Q103 Advise to improve health: Not to smoke
q104	116	Q104 Advise to improve health: Drink less/no alcohol
q105	117	Q105 Advise to improve health: Take more exercise
q106	118	Q106 Advise to improve health: Eat more fruit and vegetables
q107	119	Q107 Advise to improve health: Eat less fatty food
q108	120	Q108 Advise to improve health: Take less sugar
q109	121	Q109 Advise to improve health: Try to reduce stress
q110	122	Q110 Advise to improve health: No drugs
q111	123	Q111 Advise to improve health: Other (specify)
q112	124	Q112 Personally know someone who you think/know died of AIDS
q113	125	Q113 Past year: attend funeral of person who is said died of AIDS
q114	126	Q114 Would sleep in same room as someone with HIV/AIDS
q115	127	Q115 Would share a meal with someone who is HIV positive
q116	128	Q116 Would talk to someone with HIV/AIDS
q117	129	Q117 Would treat a family member with HIV/AIDS well
q118	130	Q118 Would not get infected if in same room as infected person
q119	131	Q119 Should write in medical records if person is HIV positive
q120	132	Q120 Should write HIV/AIDS related death on death notification
q121	133	Q121 Satisfied with time patients wait before getting served
q122	134	Q122 Satisfied with way patients are treated by doctors
q123	135	Q123 Satisfied with way patients are treated by nurses
q124	136	Q124 Satisfied with availability of medicine at hospital/clinic
q125	137	Q125 Satisfied with emergency services such as ambulances
q126	138	Q126 Sexual relations between man and woman before marriage
q127	139	Q127 Sexual relations between two adults of same gender
q128	140	Q128 Is abortion wrong: strong chance for serious defect in baby

Variable	Variable number	Description
q129	141	Q129 Is abortion wrong: low income, cannot afford more children
q130	142	Q130 If convicted of murder, should be subject to death penalty
crime1	143	In the last 6 months victim of: Residential burglary
crime2	144	In the last 6 months victim of: Robbery-aggravating circumstances
crime3	145	In the last 6 months victim of: Vehicle theft
crime4	146	In the last 6 months victim of: Theft from vehicle
crime5	147	In the last 6 months victim of: Stock theft
crime6	148	In the last 6 months victim of: Hijacking or attempted hijacking
crime7	149	In the last 6 months victim of: Murder
crime8	150	In the last 6 months victim of: Gang related violence
crime9	151	In the last 6 months victim of: Attempted murder
crime10	152	In the last 6 months victim of: Common assault
crime11	153	In the last 6 months victim of: Rape'
crime12	154	In the last 6 months victim of: Indecent assault
crime13	155	Exposed to corruption by public officials in last 6 months
crime14	156	Exposed to drug related crime in last 6 months
voting1	157	Party voted for in the 1999 national election
voting2	158	Main reason for your not voting in 1999 election
voting3	159	Party planning to vote for in the next national election
voting4	160	Main reason for thinking you will not vote in 2004 election
voting5	161	To which other party do you feel close
voting6	162	To which party do you feel most close
voting7	163	How often do you talk about politics
voting8	164	How close/distant do you feel to ANC
voting9	165	How close/distant do you feel to DA/DP
voting10	166	How close/distant do you feel to IFP
voting11	167	How close/distant do you feel to NP
voting12	168	Whether I vote or not makes no difference
voting13	169	After elected all parties are the same, voting is pointless
voting14	170	It is the duty of all citizens to vote
voting15	171	Voting meaningless because no politician can be trusted
voting16	172	Politics too complicated these days to understand
voting17	173	Politicians guilty of bribery/corruption should resign
voting18	174	Elected politicians should resign when changing party
voting19	175	Government should have authority to prevent criticism
voting20	176	Citizens should have right to form/join organisation freely
voting21	177	Government should control information given to public
voting22	178	Mass action acceptable way to express views
age	179	Age of respondent in completed years
marital	180	What is your current marital status
partner	181	Do you live together with a partner
educ	182	Highest education level you have ever completed
qualmoth	183	Highest education level your mother ever completed
qualfath	184	Highest education level your father ever completed
citizen	185	Are you a citizen of South Africa
register	186	Are you registered as a voter of South Africa
homelang	187	What language do you speak mostly at home
mothtong	188	What is you mother tongue
employ	189	Current employment status

Variable	Variable number	Description
otheremp	190	Employment status of partner
occup	191	Your current occupation
otherocc	192	What is your partners occupation
fathrocc	193	Fathers occupation when respondent was 14
mothrocc	194	Mothers occupation when respondent was 14
religion	195	Do you consider yourself as belonging to any religion
denomina	196	Please specify denomination
attend	197	Not special occasions: How often attend religious meetings
roof	198	Main material used for the roof of the dwelling
walls	199	Main material used for the walls of the dwelling
source	200	Most often used source of drinking water by household
eachday	201	Water household use each day for all purposes
toilet	202	What kind of toilet does this household use
telephon	203	Working landline telephone in your dwelling
computer	204	Do you have access to a computer
internet	205	Do you have access to the Internet
entertai	206	What Internet access is used for-1
business	207	What Internet access is used for-2
banking	208	What Internet access is used for-3
informat	209	What Internet access is used for-4
other	210	What Internet access is used for-5
allabove	211	What Internet access is used for-6
cell	212	Have a cell phone for personal or business use
fridge	213	Household have - Fridge
freezer	214	Household have - Freezer
polisher	215	Household have - Polisher or vacuum cleaner
tv	216	Household have - Television
hifi	217	Household have - Hi-fi or music centre (radio excl)
radio	218	Household have - Radio
microwav	219	Household have - Microwave oven
washingm	220	Household have - Washing machine
gridelec	221	Do you have the following - Grid Electricity
hotwater	222	Do you have the following - Hot running water
domestic	223	Do you have the following - Domestic worker
onocar	224	Do you have the following - At least one working car
hungry7	225	In the past year, time children under 7 went hungry
otherhun	226	In the past year, members of the household went hungry
hhincome	227	Total monthly household income before tax/deductions
persinco	228	Personal total monthly income before tax/deductions
minimal	229	Monthly income level minimal for household
family1	230	Who do you consider to be part of your family-1
family2	231	Who do you consider to be part of your family-2
family3	232	Who do you consider to be part of your family-3
family4	233	Who do you consider to be part of your family-4
family5	234	Who do you consider to be part of your family-5
family6	235	Who do you consider to be part of your family-6
family7	236	Who do you consider to be part of your family-7
family8	237	Who do you consider to be part of your family-8
family9	238	Who do you consider to be part of your family-9

Variable	Variable number	Description
family10	239	Who do you consider to be part of your family-10
family11	240	Who do you consider to be part of your family-11
family12	241	Who do you consider to be part of your family-12
family13	242	Who do you consider to be part of your family-13
family14	243	Who do you consider to be part of your family-14
famreas1	244	Why do you say that these people are family-1
famreas2	245	Why do you say that these people are family-2
famreas3	246	Why do you say that these people are family-3
famreas4	247	Why do you say that these people are family-4
famreas5	248	Why do you say that these people are family-5
famreas6	249	Why do you say that these people are family-6
famreas7	250	Why do you say that these people are family-7
authorit	251	Person who holds final position of authority in family
basis1	252	If yes, what is the primary basis of their authority-1
basis2	253	If yes, what is the primary basis of their authority-2
basis3	254	If yes, what is the primary basis of their authority-3
basis4	255	If yes, what is the primary basis of their authority-4
basis5	256	If yes, what is the primary basis of their authority-5
basis6	257	If yes, what is the primary basis of their authority-6
whoposi	258	If person could no longer fulfill this role, who would
mood	259	Today and last few days: would you say that you are
geo_type	260	Environmental milieu
sex	261	Gender
agegrp	262	Age in 10 year categories
race	263	Race of respondent
hhincomg	264	Total monthly household income
persincg	265	Personal total monthly income
educatg	266	Highest qualification you have ever completed
electmis	267	Party planning to vote for in the next national election (missing values included)
agecat4g	268	Age categorised in 4 categories
combiwgt	269	Weight