
Statistical release

P0211

Quarterly Labour Force Survey

Quarter 4, 2012

Embargoed until:

**05 February 2013
11:30**

Enquiries:

User Information Services
Tel: (012) 310 8600/4892/8390

Forthcoming issue:

Quarter 1, 2013

Expected release date

May 2013

Contents

	Page
List of tables in highlights of the results	ii
List of figures in highlights of the results	ii
List of tables.....	iii
1. Introduction	v
2. Highlights of the results	v
3. Employment	vi
4. The unemployed population	xiv
5. Characteristics of the not economically active population.....	xvii
6. People who were not in employment, education or training (NEET).....	xvii
7. Technical notes	xix
7.1. Response details.....	xix
7.2. Survey requirements and design	xix
7.3. Sample rotation	xix
7.4. Weighting	xx
7.5. Non-response adjustment	xx
7.6. Final survey weights.....	xx
7.7. Estimation	xx
7.8. Reliability of the survey estimates.....	xx
8. Definitions	xxi

List of tables in highlights of the results

	Page
Table A: Key labour market indicators.....	v
Table B: Employment by industry	vii
Table C: Employment by province.....	viii
Table D: Employment by occupation	xi
Table E: The unemployed by sex	xiv
Table F: Response rates by province	xix

List of figures in highlights of the results

Figure 1: Total employment, quarter 1:2008 to quarter 4:2012	vi
Figure 2: Quarter-to-quarter change in employment, quarter 1:2008 to quarter 4:2012.....	vi
Figure 3: Year-on-year change in employment, quarter 1:2008 to quarter 4:2012.....	vii
Figure 4: Changes in the formal sector employment by industry.....	viii
Figure 5: Quarter-to-quarter changes in the formal sector employment.....	ix
Figure 6: Year-on-year changes in the formal sector employment.....	ix
Figure 7: Changes in the informal sector employment by industry.....	x
Figure 8: Quarter-to-quarter changes in the informal sector employment	x
Figure 9: Year-on-year changes in the informal sector employment	xi
Figure 10: Employee access to selected leave benefits.....	xii
Figure 11: Employee access to other benefits.....	xii
Figure 12: Nature of employment contract or agreement , quarter 1:2008 to quarter 4:2012	xiii
Figure 13: How annual salary increment is negotiated	xiii
Figure 14: Total unemployment, quarter 1:2008 to quarter 4:2012	xiv
Figure 15: Unemployment rate by sex.....	xv
Figure 16: Share of the unemployed by education level.....	xv
Figure 17: Unemployment rate by province.....	xvi
Figure 18: Unemployment rate by population group.....	xvi
Figure 19: The not economically active	xvii
Figure 20: NEET rate ¹ of youth aged 15-24 years by sex	xvii
Figure 21: Share of 15-24 year olds who are not in the employment, education or training by sex	xviii

List of tables

	Page
Table 1: Population of working age (15-64 years)	1
Table 2: Labour force characteristics by sex - All population groups	2
Table 2: Labour force characteristics by sex - All population groups (concluded)	3
Table 2.1: Labour force characteristics by population group	4
Table 2.1: Labour force characteristics by population group (concluded)	5
Table 2.2: Labour force characteristics by province	6
Table 2.2: Labour force characteristics by province (continued)	7
Table 2.2: Labour force characteristics by province (continued)	8
Table 2.2: Labour force characteristics by province (continued)	9
Table 2.2: Labour force characteristics by province (concluded)	10
Table 2.3: Labour force characteristics by province - Expanded definition of unemployment	11
Table 2.3: Labour force characteristics by province - Expanded definition of unemployment (continued) ...	12
Table 2.3: Labour force characteristics by province - Expanded definition of unemployment (continued) ...	13
Table 2.3: Labour force characteristics by province - Expanded definition of unemployment (concluded) ..	14
Table 3.1: Employed by industry and sex - South Africa	15
Table 3.2: Employed by industry and province	16
Table 3.2: Employed by industry and province (continued)	17
Table 3.2: Employed by industry and province (continued)	18
Table 3.2: Employed by industry and province (concluded)	19
Table 3.3: Employed by sector and industry - South Africa	20
Table 3.4: Employed by province and sector	21
Table 3.4: Employed by province and sector (concluded)	22
Table 3.5: Employed by sex and occupation - South Africa	23
Table 3.6: Employed by sex and status in employment - South Africa	24
Table 3.7: Employed by sex and usual hours of work - South Africa	25
Table 3.8: Conditions of employment - South Africa	26
Table 3.8: Conditions of employment - South Africa (continued)	27
Table 3.8: Conditions of employment - South Africa (continued)	28
Table 3.8: Conditions of employment - South Africa (continued)	29
Table 3.8: Conditions of employment - South Africa (continued)	30
Table 3.8: Conditions of employment - South Africa (concluded)	31
Table 3.9: Time-related underemployment - South Africa	32
Table 4: Characteristics of the unemployed - South Africa	33
Table 4: Characteristics of the unemployed - South Africa (concluded)	34
Table 5: Characteristics of the not economically active - South Africa	35
Table 6: Socio-demographic characteristics - South Africa	36
Table 6: Socio-demographic characteristics - South Africa (continued)	37

Table 6: Socio-demographic characteristics - South Africa (continued)	38
Table 6: Socio-demographic characteristics - South Africa (concluded)	39
Table 7: Profile of those not in education and not in employment - South Africa	40
Table 8: Involvement in non-market activities and labour market status by province	41
Table 8: Involvement in non-market activities and labour market status by province (continued)	42
Table 8: Involvement in non-market activities and labour market status by province (continued)	43
Table 8: Involvement in non-market activities and labour market status by province (concluded)	44
Appendix 2A: Sampling variability for labour force characteristics by sex	45
Appendix 2A: Sampling variability for labour force characteristics by sex (conclude)	46
Appendix 2.1A: Sampling variability for labour force characteristics by population group	47
Appendix 2.1A: Sampling variability for labour force characteristics by population group (concluded)	48
Appendix 2.2A: Sampling variability for labour force characteristics by province	49
Appendix 2.2A: Sampling variability for labour force characteristics by province (continued)	50
Appendix 2.2A: Sampling variability for labour force characteristics by province (continued)	51
Appendix 2.2A: Sampling variability for labour force characteristics by province (continued)	52
Appendix 2.2A: Sampling variability for labour force characteristics by province (concluded)	53
Appendix 3.1A: Sampling variability for the employed by industry and sex	54
Appendix 3.4A: Sampling variability for the employed by province and sector	55
Appendix 3.4A: Sampling variability for the employed by province and sector (concluded)	56
Appendix 3.5A: Sampling variability for the employed by sex and occupation	57
Appendix 2B: Sampling variability for labour force characteristics by sex	58
Appendix 2B: Sampling variability for labour force characteristics by sex (concluded)	59
Appendix 2.1B: Sampling variability for labour force characteristics by population group	60
Appendix 2.1B: Sampling variability for labour force characteristics by population group (concluded)	61
Appendix 2.2B: Sampling variability for labour force characteristics by province	62
Appendix 2.2B: Sampling variability for labour force characteristics by province (continued)	63
Appendix 2.2B: Sampling variability for labour force characteristics by province (continued)	64
Appendix 2.2B: Sampling variability for labour force characteristics by province (continued)	65
Appendix 2.2B: Sampling variability for labour force characteristics by province (concluded)	66
Appendix 3.1B: Sampling variability for the employed by industry and sex	67
Appendix 3.4B: Sampling variability for the employed by province and sector	68
Appendix 3.4B: Sampling variability for the employed by province and sector (concluded)	69
Appendix 3.5B: Sampling variability for the employed by sex and occupation	70

1. Introduction

The Quarterly Labour Force Survey (QLFS) is a household-based sample survey conducted by Statistics South Africa (Stats SA). It collects data on the labour market activities of individuals aged 15 years and above who live in South Africa. However, this report only covers labour market activities of persons aged 15 to 64 years.

This report presents the key findings of the QLFS conducted from October to December 2012 (Q4: 2012).

2. Highlights of the results

Table A: Key labour market indicators

	Oct-Dec 2011	Jul-Sep 2012	Oct-Dec 2012	Qrt to Qrt change	Year on year change	Qrt to Qrt change	Year on year change
	Thousand					Thousand	
Population aged 15–64 yrs	32 670	33 018	33 128	110	458	0,3	1,4
Labour force	17 741	18 313	18 078	-235	337	-1,3	1,9
Employed	13 497	13 645	13 577	-68	80	-0,5	0,6
Formal sector (non-agricultural)	9 616	9 663	9 611	-52	-5	-0,5	-0,1
Informal sector (non-agricultural)	2 134	2 197	2 205	8	71	0,4	3,3
Agriculture	630	661	685	24	55	3,6	8,7
Private households	1 118	1 124	1 076	-48	-42	-4,3	-3,8
Unemployed	4 244	4 667	4 501	-166	257	-3,6	6,1
Not economically active	14 929	14 705	15 050	345	121	2,3	0,8
Discouraged work-seekers	2 315	2 170	2 257	87	-58	4,0	-2,5
Other (not economically active)	12 614	12 535	12 794	259	180	2,1	1,4
Rates (%)							
Unemployment rate	23,9	25,5	24,9	-0,6	1,0		
Employed/population ratio (absorption)	41,3	41,3	41,0	-0,3	-0,3		
Labour force participation rate	54,3	55,5	54,6	-0,9	0,3		

Due to rounding, numbers do not necessarily add up to totals.

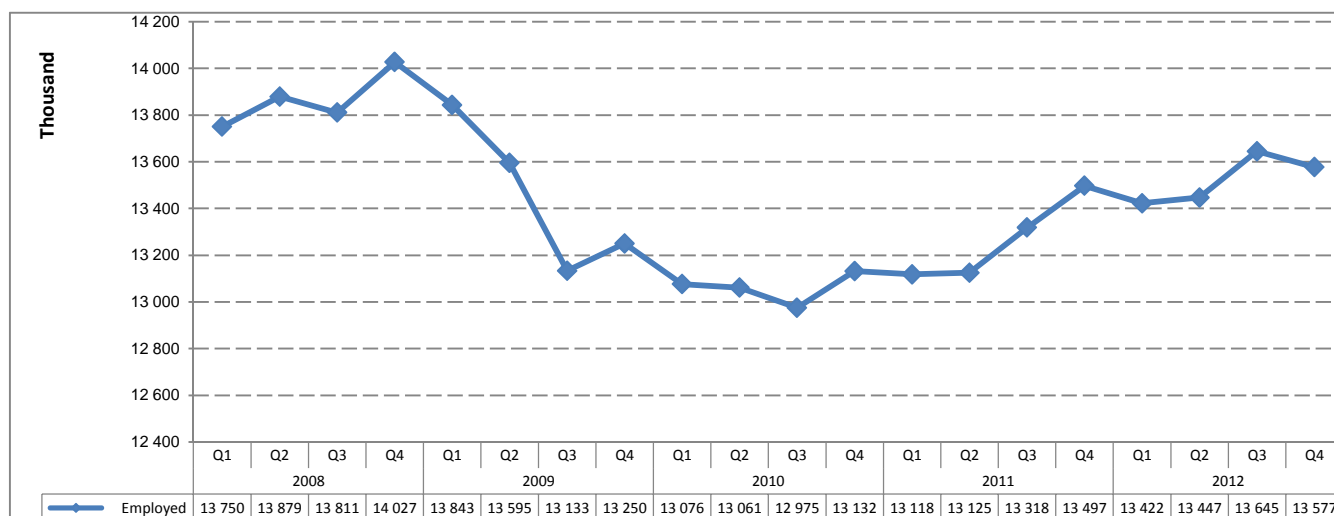
The labour force decreased by 235 000 persons between Q3: 2012 and Q4: 2012. This decrease was reflected in a decrease in the number of both unemployed persons (166 000) and employed persons (68 000), which saw the unemployment rate decline by 0,6 of a percentage point from 25,5% to 24,9% in Q4: 2012. It is the first time since the inception of the QLFS that there is a decrease in employment in the 4th quarter of a year.

A decrease in employment was attributable to job losses experienced in the formal sector (down by 52 000) and Private households (down by 8 000). Employment in agriculture and in the informal sector increased by 24 000 (3,6%) and 8 000 (0,4%) respectively. The number of discouraged work-seekers increased by 87 000 between Q3:2012 and Q4:2012, while other not economically active persons increased by 259 000.

Compared to a year ago, in Q4: 2012, employment increased by 0,6% (80 000), unemployment increased by 6,1% (257 000), the number of discouraged work-seekers decreased by 2,5% (58 000) and other (not economically active) increased by 1,4% (180 000), resulting in a net increase of 121 000 in the not economically active population.

3. Employment

Figure 1: Total employment, quarter 1:2008 to quarter 4:2012



Since 2008 there has been a rise in employment during the fourth quarter of every year, followed by a decline in the subsequent quarter with the exception of Q4:2012. Since Q3:2010, employment levels have steadily risen from 12,9 million to 13,5 million in Q4:2012, with annual increases of 365 000 and 80 000 for the years ending Q4:2011 and Q4:2012 respectively. The highest employment levels were observed in Q3:2012 and Q4:2012 since Q2:2009.

Figure 2: Quarter-to-quarter change in employment, quarter 1:2008 to quarter 4:2012

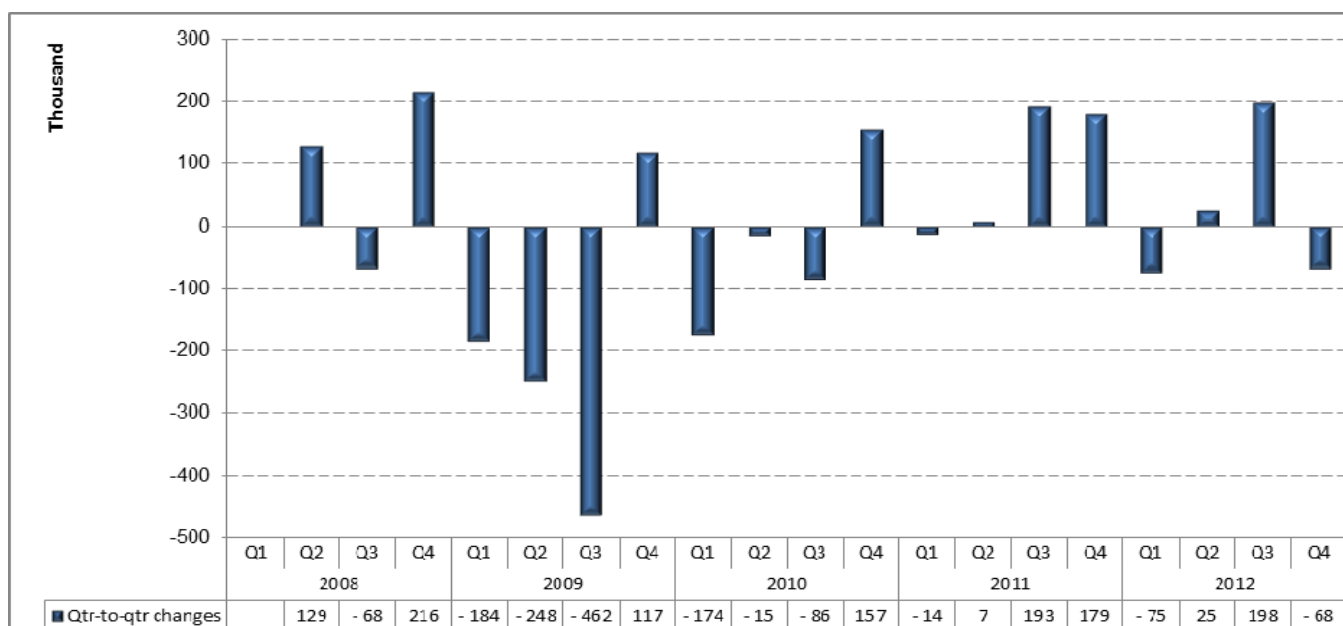
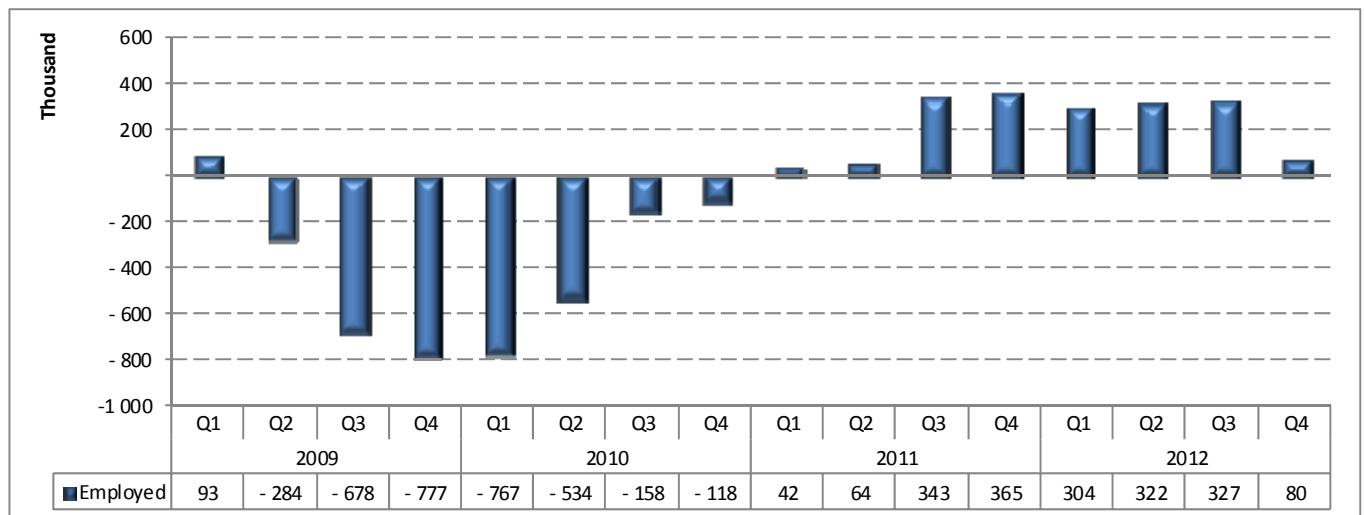


Figure 2 shows that after three successive quarters of increases in employment, employment declined by 75 000 in Q1:2012. Further employment gains of 25 000 and 198 000 were observed in Q2:2012 and Q3:2012 respectively, followed by job losses of 68 000 in Q4:2012.

Figure 3: Year-on-year change in employment, quarter 1:2008 to quarter 4:2012



South Africa has experienced weak employment growth over the past year, with annual employment growing by 80 000 (or 0,6%), following a growth of 327 000 (or 2,5%) in the year ended September 2012. Total employment has grown for eight consecutive quarters on an annual basis since Q1:2011.

Table B: Employment by industry

	Oct-Dec 2011	Jul-Sep 2012	Oct-Dec 2012	Qtr-to- qtr change	Year-on- year change	Qtr-to- qtr change	Year-on- year change
Industry	Thousand					Per cent	
Total*	13 497	13 645	13 577	-68	80	-0,5	0,6
Agriculture	630	661	685	24	55	3,6	8,7
Mining [#]	327	349	357	8	30	2,3	9,2
Manufacturing	1 789	1 727	1 730	3	-59	0,2	-3,3
Utilities	81	105	98	-7	17	-6,7	21,0
Construction	1 057	1 046	1 061	15	4	1,4	0,4
Trade	3 060	2 962	2 921	-41	-139	-1,4	-4,5
Transport	788	834	816	-18	28	-2,2	3,6
Finance and other business services	1 739	1 811	1 804	-7	65	-0,4	3,7
Community and social services	2 902	3 025	3 028	3	126	0,1	4,3
Private households	1 118	1 124	1 076	-48	-42	-4,3	-3,8

Note: Total includes other industry.

[#]Mining is a very clustered industry, hence the industry might not have been adequately captured by the QLFS sample.

For more robust mining estimates, please use the Quarterly Employment Statistics (QES).

*Due to rounding, numbers do not necessarily add up to totals.

Table B indicates that between Q3:2012 and Q4:2012, the decline in total employment was mainly driven by the decrease in the number of employed persons in Private households (48 000), Trade (41 000) and Transport (18 000) industries, while employment gains were observed in Agriculture (24 000), Construction (15 000) and Mining (8 000).

Compared to the same period last year, employment increased by 80 000 jobs, with Community and social services, Finance and other business services and Agriculture, contributing 126 000, 65 000 and 55 000 jobs respectively. Job losses of 139 000, 59 000 and 42 000 were observed in Trade, Manufacturing and Private Households industries respectively between Q4:2011 and Q4:2012.

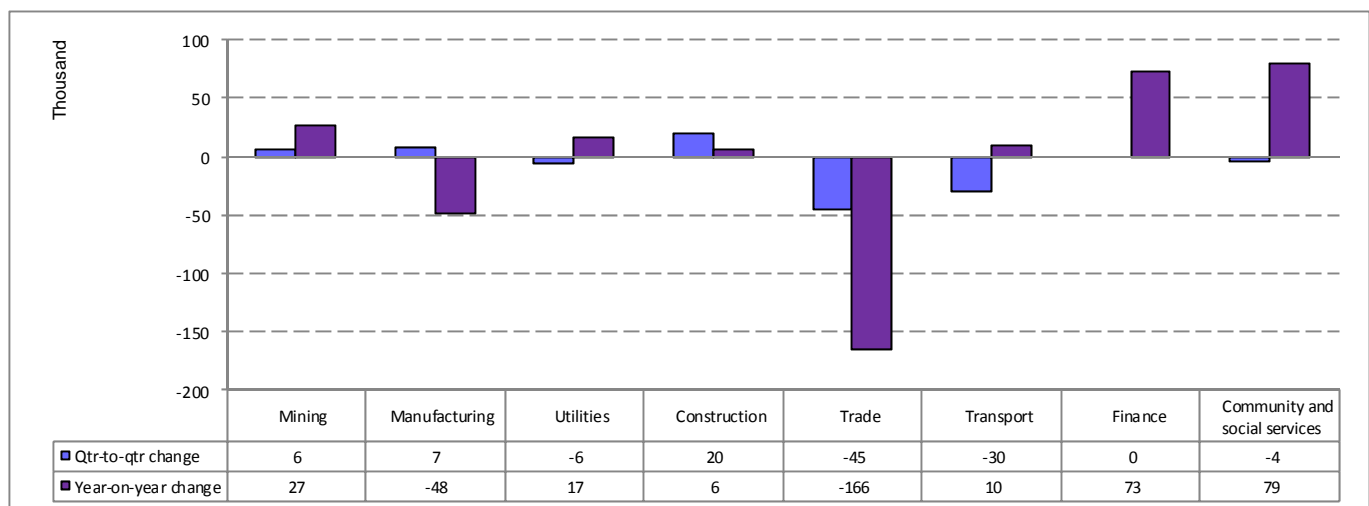
Table C: Employment by province

	Oct-Dec 2011	Jul-Sep 2012	Oct-Dec 2012	Qtr-to- qtr change	Year-on- year change	Qtr-to- qtr change	Year-on- year change
Province	Thousand					Per cent	
South Africa	13 497	13 645	13 577	-68	80	-0,5	0,6
Western Cape	1 842	1 806	1 824	18	-18	1,0	-1,0
Eastern Cape	1 326	1 330	1 261	-69	-65	-5,2	-4,9
Northern Cape	291	290	292	2	1	0,7	0,3
Free State	753	736	732	-4	-21	-0,5	-2,8
KwaZulu-Natal	2 562	2 533	2 493	-40	-69	-1,6	-2,7
North West	700	745	747	2	47	0,3	6,7
Gauteng	4 115	4 194	4 178	-16	63	-0,4	1,5
Mpumalanga	923	928	959	31	36	3,3	3,9
Limpopo	985	1 084	1 092	8	107	0,7	10,9

*Due to rounding, numbers do not necessarily add up to totals.

Table C shows that between Q3:2012 and Q4:2012, there were job losses in four of the nine provinces, with the largest declines observed in Eastern Cape (69 000), KwaZulu-Natal (40 000) and Gauteng (16 000). There were employment gains in Mpumalanga (31 000), Western Cape (18 000) and Limpopo (8 000) over the same period.

Compared to the year ended December 2011, employment increased in five of the nine provinces, with Limpopo (107 000), Gauteng (63 000) and North West (47 000) being the biggest contributors, while job losses were observed in KwaZulu-Natal (69 000), Eastern Cape (65 000) and Free State (21 000).

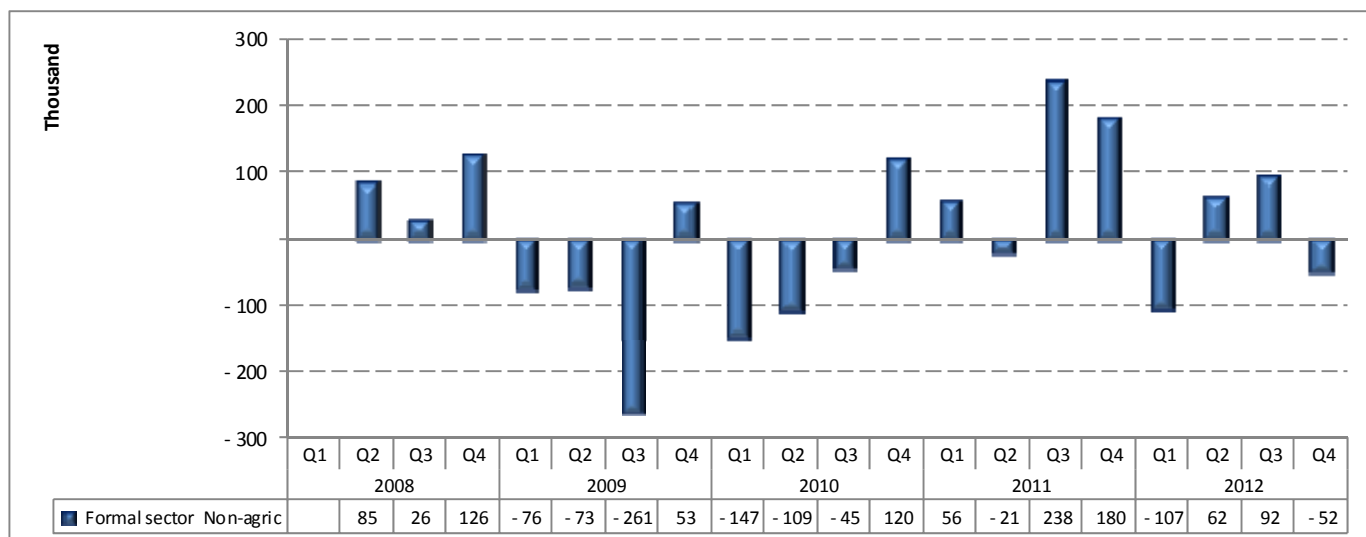
Figure 4: Changes in the formal sector employment by industry

*Mining is a very clustered industry, hence the industry might not have been adequately captured by the QLFS sample. For more robust mining estimates please use the Quarterly Employment Statistics (QES)

In Q4:2012, formal sector employment accounted for 70,8% of total employment, which remained unchanged from the previous quarter. Between Q3:2012 and Q4:2012, employment in the formal sector declined by 52 000, the majority of the job gains being in the Construction (20 000), Manufacturing (7 000) and Mining (6 000) industries.

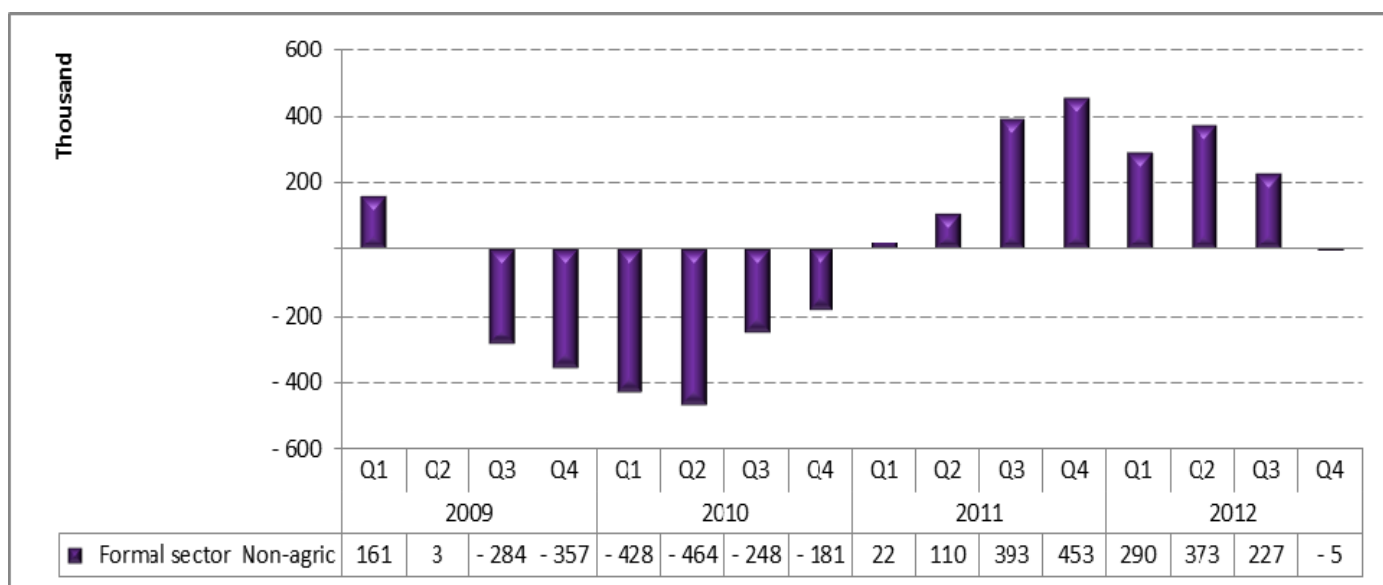
Compared to the same period last year, employment gains were recorded in six of the eight industries, in particular the Community and social services (79 000), Finance and other business services (73 000) and Mining (27 000) industries.

Figure 5: Quarter-to-quarter changes in the formal sector employment

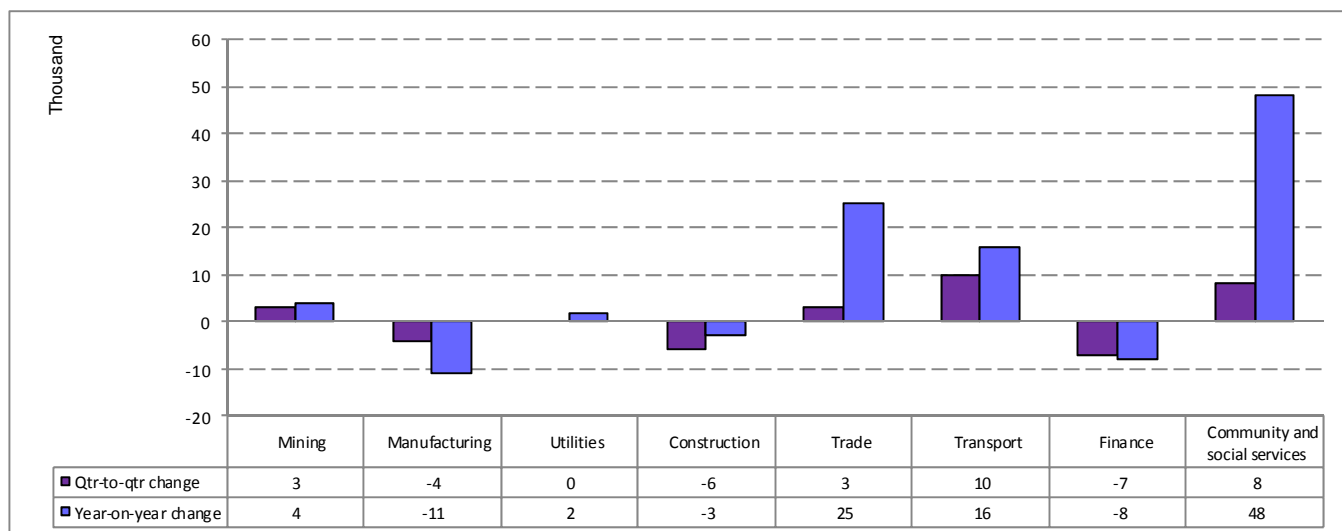


Following two consecutive quarters of employment gains, the formal sector shed 52 000 jobs in Q4:2012 compared to Q3:2012.

Figure 6: Year-on-year changes in the formal sector employment



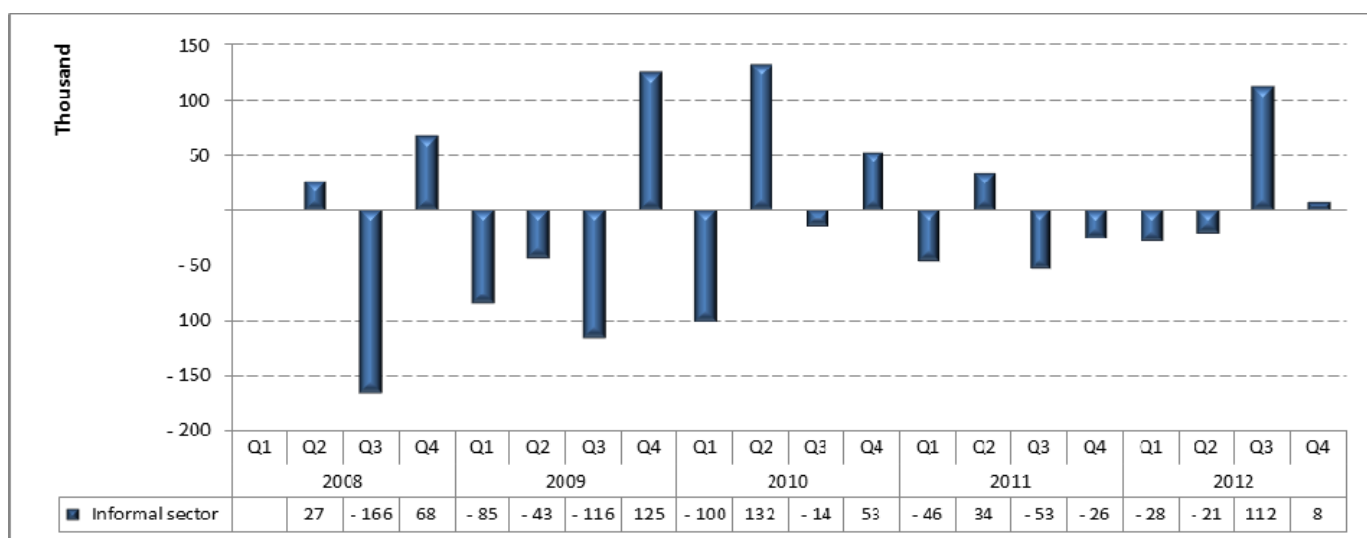
The annual change in the number of persons employed in the formal sector has been rising since Q1:2011 to Q3:2012. Compared to a year ago, formal sector employment remained virtually unchanged in Q4:2012, (a slight decline of 5 000 jobs).

Figure 7: Changes in the informal sector employment by industry

#Mining is a very clustered industry, hence the industry might not have been adequately captured by the QLFS sample. For more robust mining estimates please use the Quarterly Employment Statistics (QES)

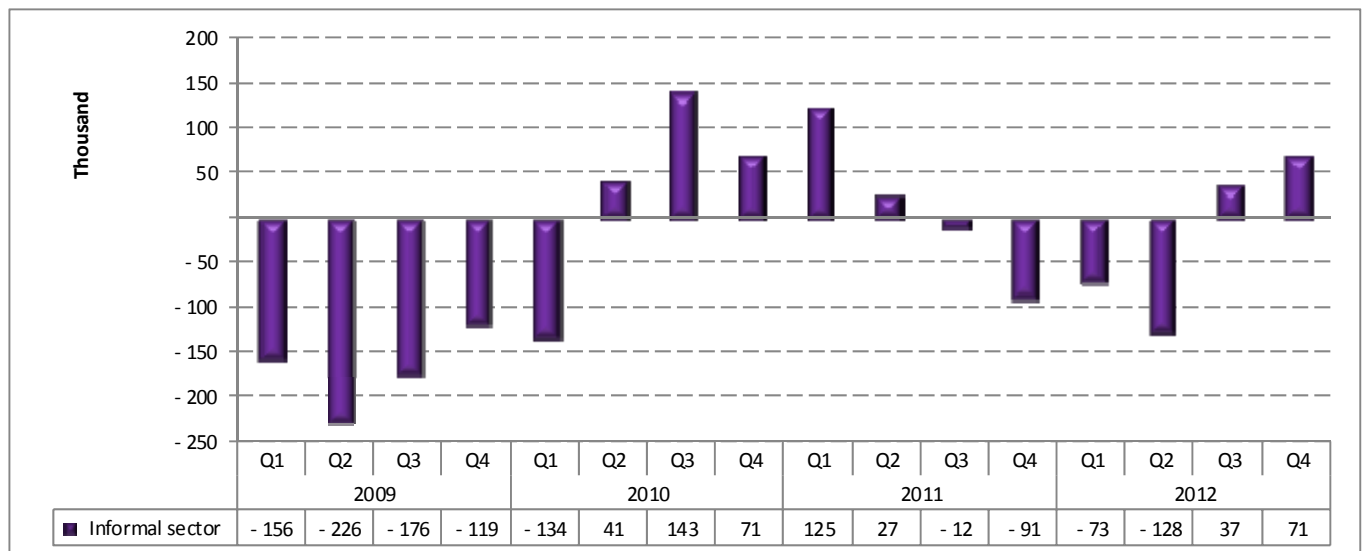
Informal sector employment increased by 8 000 jobs between Q3:2012 and Q4:2012. Figure 7 indicates that the majority of jobs in the sector were created in Transport (10 000), and Community and social services (8 000), while job losses were mainly observed in Finance and other business services (7 000) and Construction (6 000).

Compared to Q4:2011, the informal sector created 71 000 more jobs in Q4:2012. Community and social service, Trade and Transport are the industries with robust employment gains, contributing 48 000, 25 000 and 16 000 jobs respectively.

Figure 8: Quarter-to-quarter changes in the informal sector employment

Informal sector employment increased by 8 000 (0,4%) jobs between Q3:2012 and Q4:2012, this increase follows 112 000 (5,4%) quarter-to-quarter increase in the previous quarter.

Figure 9: Year-on-year changes in the informal sector employment



Informal sector jobs had contracted for four successive quarters, year-on-year, since Q3:2011. However, 37 000 more jobs were created in Q3:2012 and 71 000 jobs in Q4:2012 compared to the same quarters in the previous year.

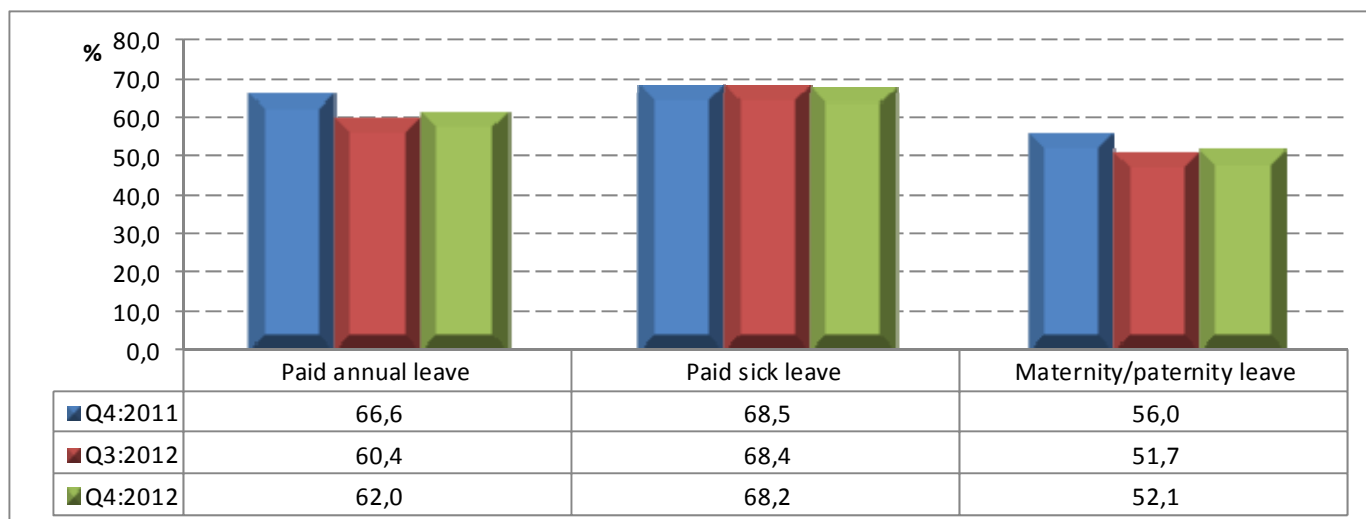
Table D: Employment by occupation

	Oct-Dec 2011	Jul-Sep 2012	Oct-Dec 2012	Qtr-to-qtr change	Year-on-year change	Qtr-to-qtr change	Year-on-year change
Occupation	Thousand				Per cent		
Total	13 497	13 645	13 577	-68	80	-0,5	0,6
Manager	1 130	1 135	1 075	-60	-55	-5,3	-4,9
Professional	745	798	805	7	60	0,9	8,1
Technician	1 498	1 523	1 503	-20	5	-1,3	0,3
Clerk	1 523	1 390	1 443	53	-80	3,8	-5,3
Sales and services	1 960	2 062	1 996	-66	36	-3,2	1,8
Skilled agriculture	67	67	60	-7	-7	-10,4	-10,4
Craft and related trade	1 637	1 662	1 660	-2	23	-0,1	1,4
Plant and machine operator	1 126	1 150	1 139	-11	13	-1,0	1,2
Elementary	2 933	2 982	3 034	52	101	1,7	3,4
Domestic worker	878	876	861	-15	-17	-1,7	-1,9

*Due to rounding, numbers do not necessarily add up to totals.

Elementary occupations account for the largest share of total employment at 22,3%. The number of persons employed in Elementary occupations increased by 52 000 in Q4:2012. The biggest decline in employment by occupational category was observed in Sales and services (66 000), followed by Managerial (60 000) and Technical (20 000) occupations. Increases in employment were observed in Clerical (53 000), Elementary (52 000) and Professional (7 000) occupations in Q4:2012.

Compared to a year ago, job creation was concentrated in Elementary (101 000), Professional (60 000) and Sales and services (36 000) occupations. There was a decline in the number of persons employed in Clerical (80 000), Managerial (55 000) and Domestic work (17 000) occupations.

Figure 10: Employee access to selected leave benefits

Between Q3:2012 and Q4:2012, the proportion of employees with access to paid annual leave and maternity leave increased, while paid sick leave benefit declined. Entitlement to paid sick leave benefit was the most available benefit offered by employers, with paid sick leave available to 68,2% of employees in Q4:2012, 0,2 of a percentage point decline from the previous quarter. The proportion of employees with paid annual (vacation) leave increased from 60,4% in Q3:2012 to 62,0% in Q4:2012; while a slight increase (0,4 of a percentage point) was observed in the proportion of employees with maternity/paternity leave benefit.

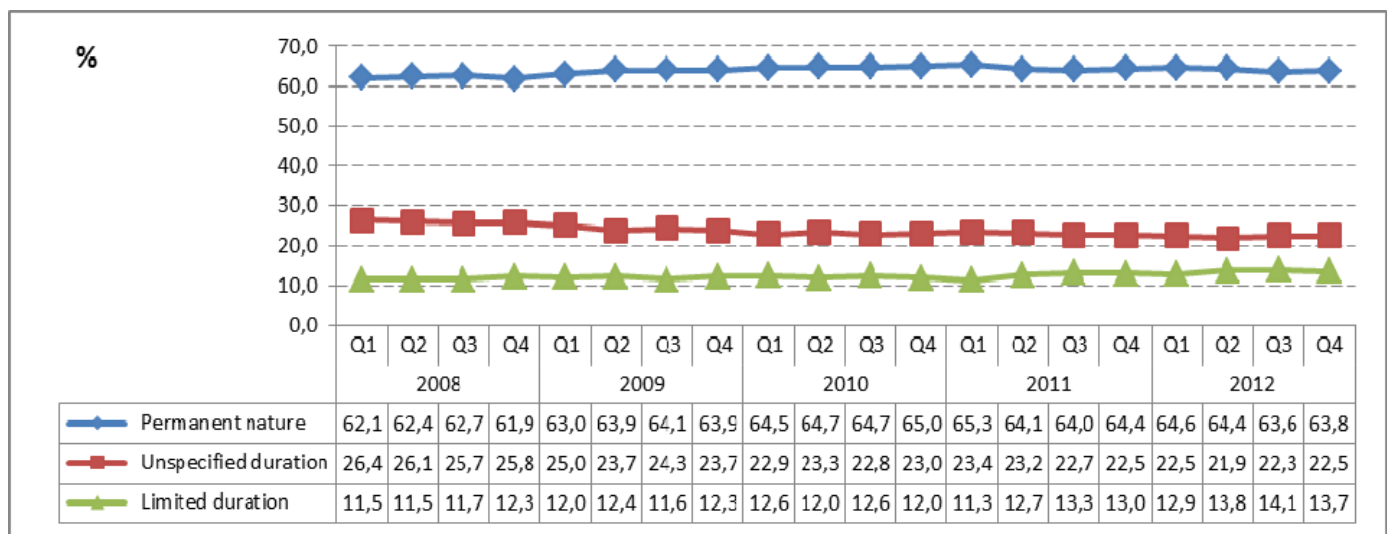
Compared to the same quarter in 2011, the proportion of employees with access to selected leave benefits declined. Proportion of employees with paid sick leave benefit declined marginally by 0,3 of a percentage points, while paid annual leave benefit and maternity leave benefit increased by 4,6 and 3,9 percentage points respectively.

Figure 11: Employee access to other benefits

About three fifths of the employees indicated that their employers paid Unemployment Insurance Fund (UIF) contributions on their behalf, while about a third of employees were entitled to medical aid benefits from their employers. Between Q3:2012 and Q4:2012, there was a decrease of 0,7 of a percentage point in the proportion of employees for whom their employers paid UIF, while medical aid benefit coverage decreased by 1,1 percentage points.

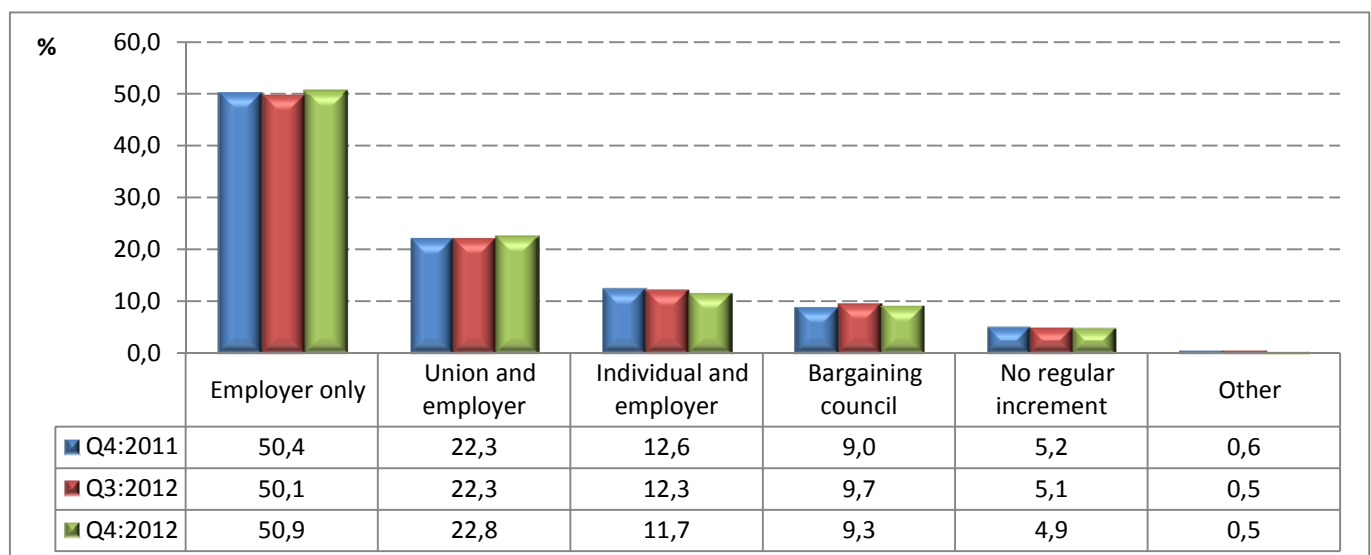
Compared to a year ago, improvements were observed in the proportion of employees whose employers paid UIF for them (up by 4,0 percentage points), while those with medical benefit saw an increase of only 0,2 of a percentage point.

Figure 12: Nature of employment contract or agreement, quarter 1:2008 to quarter 4:2012



Since Q1:2008, more than 60,0% of the employees had a permanent contract/agreement with their employer, while more than 11,0% had a contract of a limited duration with their employer. Between Q1:2008 and Q4:2012, employees with a permanent contract/agreement with their employer had increased by 1,7 percentage points, while those with a limited duration contract increased by 2,2 percentage points.

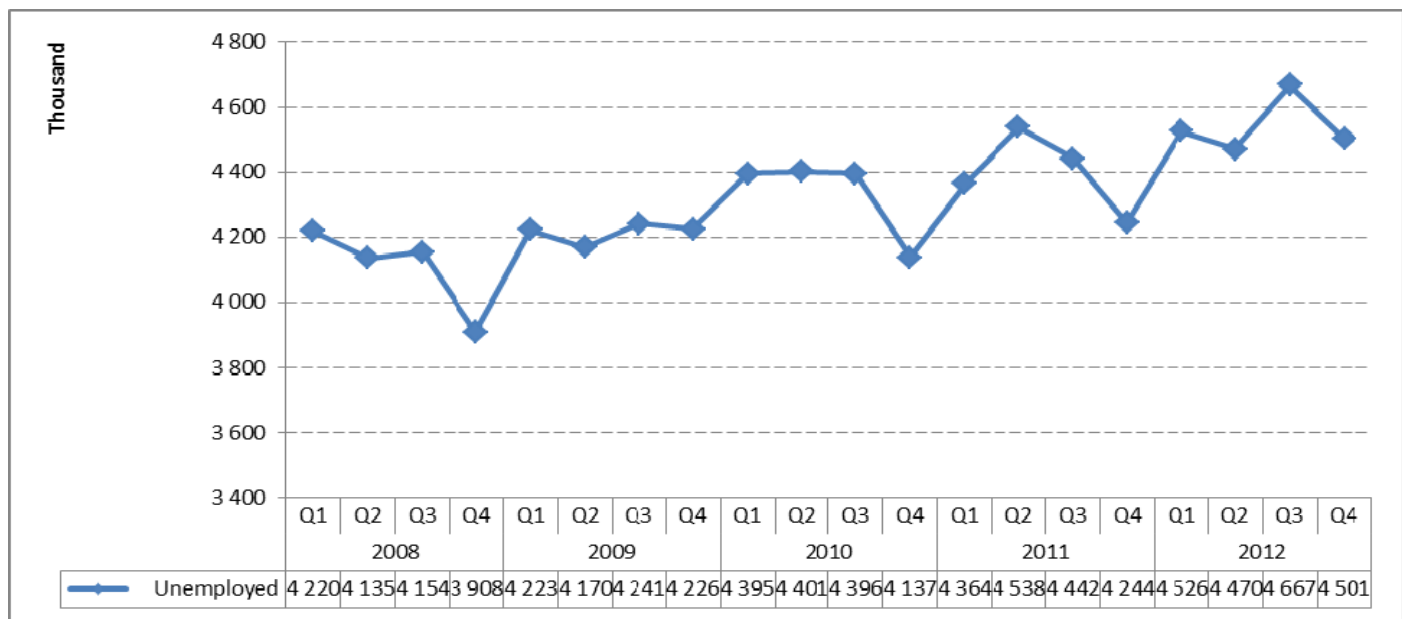
Figure 13: How annual salary increment is negotiated



Approximately 95% of employees have a regular salary increase, though a large proportion (50,9%) indicated that their annual salary increases are determined by the employer only. While the union negotiates salary increment for 22,8% of employees, 11,7% of employees negotiate for themselves and for 9,3% of employees negotiations are made by the bargaining council.

4. The unemployed population

Figure 14: Total unemployment, quarter 1:2008 to quarter 4:2012



In Q4:2008, there were approximately 3,9 million persons unemployed in South Africa, the lowest number since Q1:2008. During the financial and economic crisis, the level of unemployment climbed rapidly, reaching a peak of 4,4 million in Q2:2010, and remaining around this level in the following quarter. The number of unemployed persons rose to 4,6 million in Q3:2012 and decreased by 166 000 (or 3,6%) to 4,5 million in Q4:2012.

Table E: The unemployed by sex

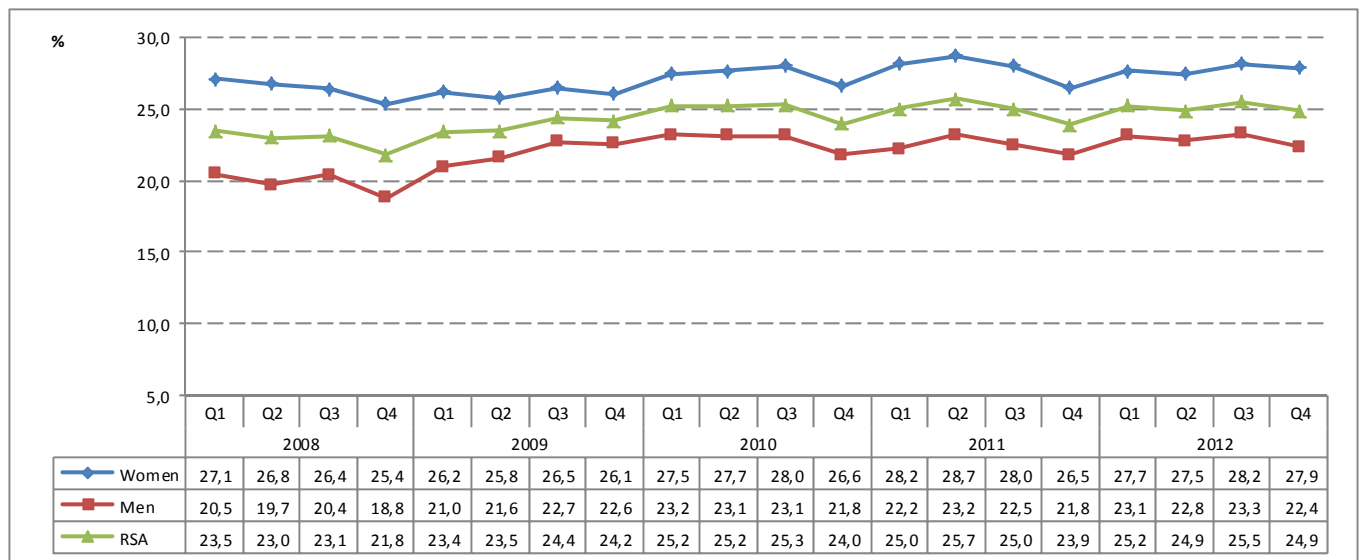
	Oct-Dec 2011	Jul-Sep 2012	Oct-Dec 2012	Qtr-to-qtr change	Year-on-year change	Qtr-to-qtr change	Year-on-year change
Unemployed	Thousand				Per cent		
Total*	4 244	4 667	4 501	-166	257	-3,6	6,1
Women	2 129	2 331	2 279	-52	150	-2,2	7,0
Men	2 115	2 336	2 222	-114	107	-4,9	5,1

*Due to rounding, numbers do not necessarily add up to totals.

Unemployment decreased by 166 000 (or 3,2%) persons between Q3:2012 and Q4:2012. This decline reflected a drop in both the number of unemployed men (114 000) and unemployed women (52 000).

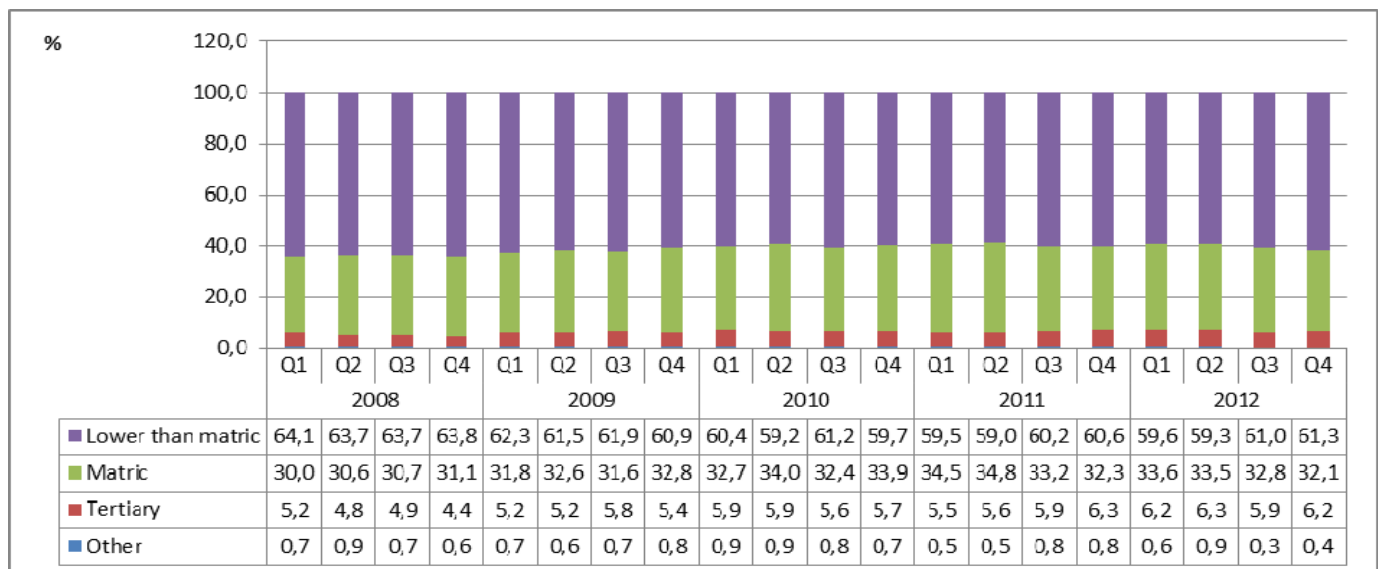
Year-on-year, the number of unemployed women increased by 150 000 (or 7,0%), while the number of unemployed men increased by 107 000 (or 5,1%).

Figure 15: Unemployment rate by sex



The unemployment rate for women was 27,1% in Q1:2008, while the rate for men was 6,6 percentage points lower, and by Q4:2012 this gap had narrowed to 5,5 percentage points. Unemployment rate for women remained higher than the national average between Q1:2008 and Q4:2012. The biggest difference in unemployment rate between men and women was observed in Q2:2008 (7,1 percentage points), while the smallest difference was realised in Q4:2009 (3,5 percentage points).

Figure 16: Share of the unemployed by education level



In general, lower unemployment rates are associated with higher levels of education. In Q1:2008, about 64% of the unemployed did not have matric, while only 5,2% of the unemployed had tertiary qualifications. In Q4:2012, 61,3% of the unemployed did not have matric (2,8 percentage points lower than in Q1:2008) and only 6,2% had tertiary qualifications (1,0 percentage point higher than in Q1:2008). The share of the unemployed persons with educational levels lower than matric has been steady, accounting for around 60% in each quarter.

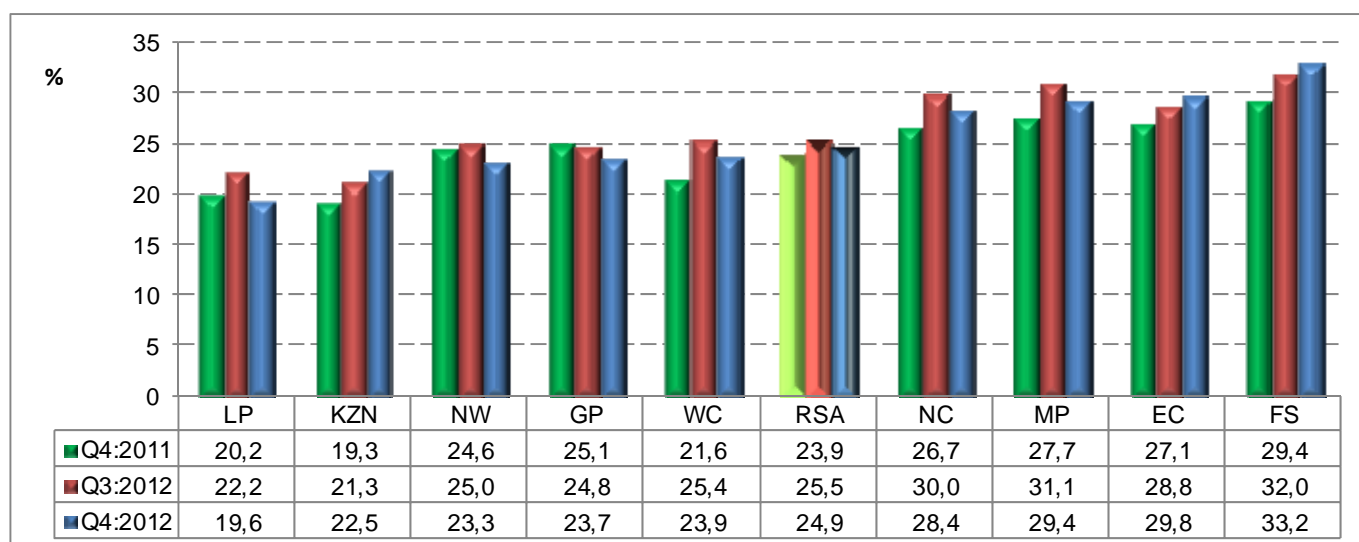
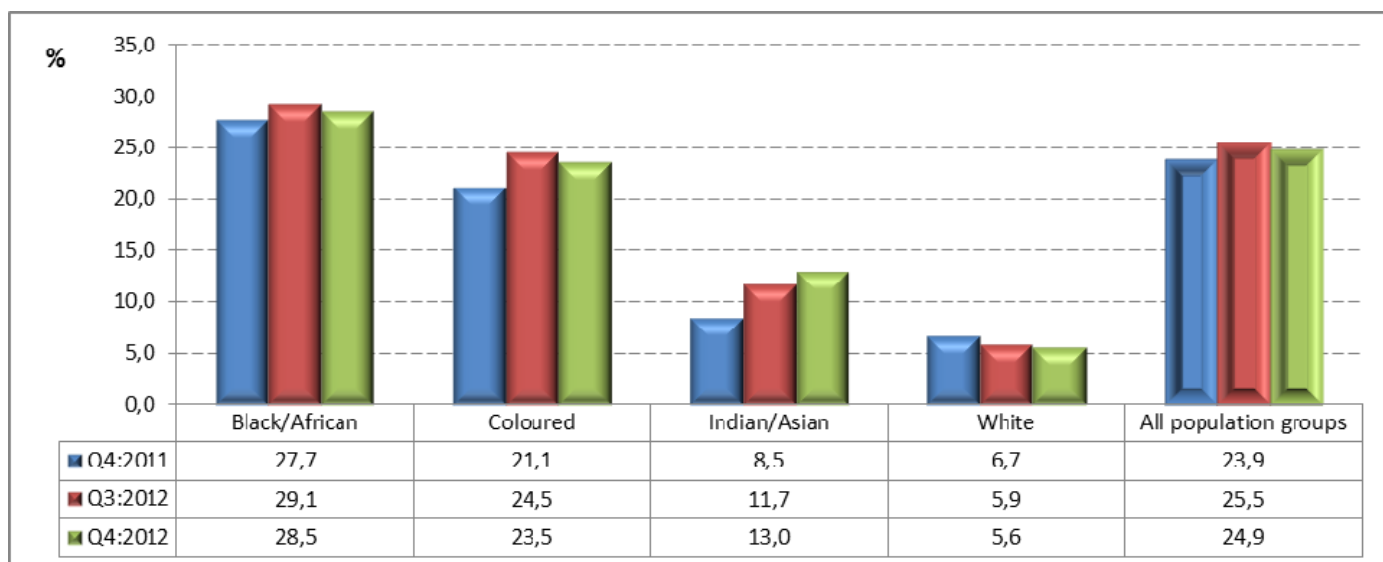
Figure 17: Unemployment rate by province

Figure 17 shows a decrease in the unemployment rate in six of the nine provinces in Q4:2012 compared to Q3:2012. The biggest decrease in the unemployment rate was observed in Limpopo (2,6 percentage points), North West (1,7 percentage points) and Mpumalanga (1,7 percentage points). The biggest increase in unemployment rate was recorded in KwaZulu-Natal (1,2 percentage points) and Free State (1,2 percentage points).

In comparison to the same period last year, the unemployment rate increased by 1,0 percentage point at the national level. The biggest increases in the unemployment rate were observed in Free State (3,8 percentage points), KwaZulu-Natal (3,2 percentage points) and Eastern Cape (2,7 percentage points). The biggest decrease in unemployment rate was recorded in Gauteng (1,4 percentage points) in the same period.

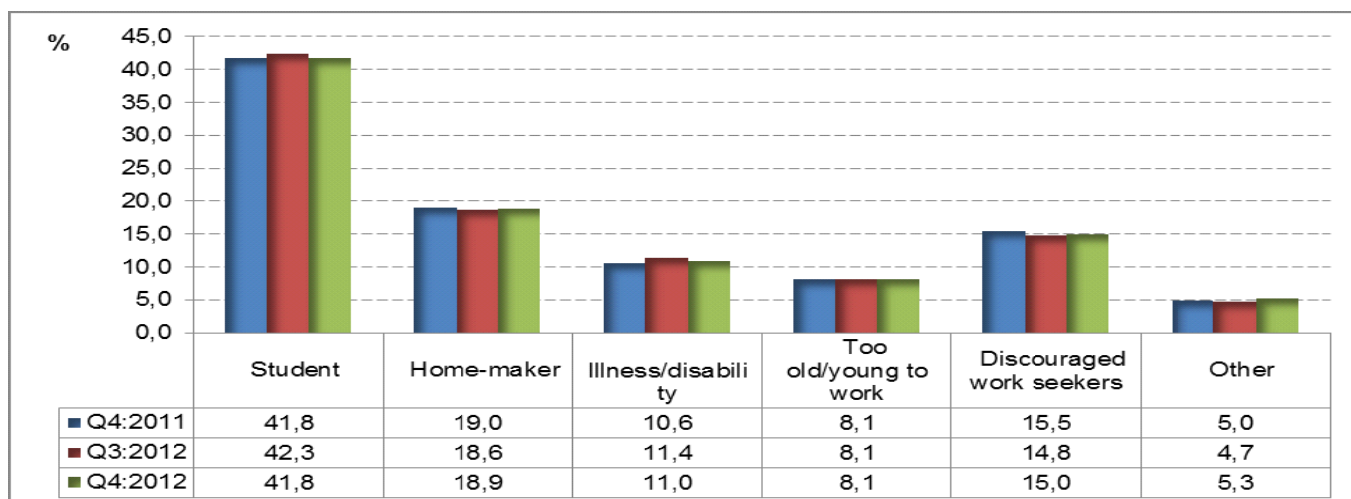
Figure 18: Unemployment rate by population group

Between Q3:2012 and Q4:2012, unemployment rate decreased among the black African population (down by 0,6 of a percentage point), coloured (down by 1,0 percentage point) and white (down by 0,3 of a percentage point) population groups; while an increase of 1,3 percentage points was observed among the Indian/Asian population.

The year-on-year comparisons show an increase in the unemployment rate among the black African, coloured and Indian/Asian population groups, while it decreased among the white population group.

5. Characteristics of the not economically active population

Figure 19: The not economically active



In Q4:2012, students (41,8%) accounted for the largest share of the not economically active population, followed by home-makers (18,9%), while discouraged work-seekers accounted for 15,0% of the not economically active (0,2 of a percentage point higher than in the previous quarter).

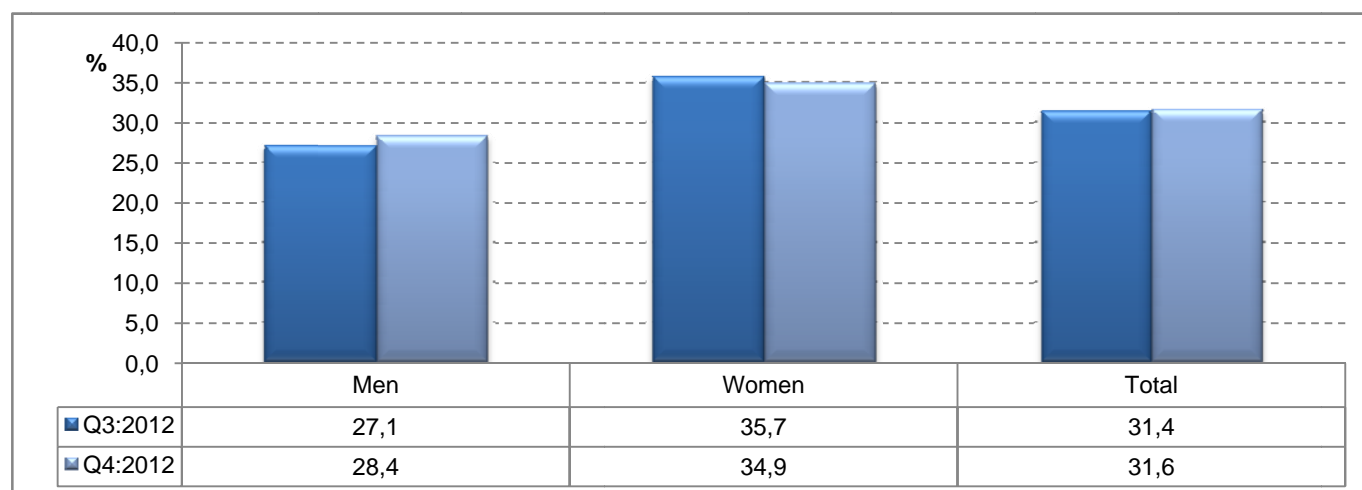
Compared to a year ago (Q4:2011), the share of students among the not economically active population remained unchanged; while the share of discouraged work-seekers decreased by 0,5 of a percentage point.

6. People who were not in employment, education or training (NEET)

Recently there has been increasing interest in the challenges faced by young people in the labour market. This interest resulted in a demand for more information on the dynamics of the youth not in employment, education or training (NEET). Consequently Stats SA decided to include questions in the QLFS questionnaire to enable the identification of the NEETs. The Q4:2012 release is the second report with statistics on NEETs.

Approximately a third of the youth aged 15–24 years were not in employment, education or training in Q4:2012, which indicates the vulnerability of this group. The youth who are categorised as NEET are considered to be disengaged from both work and education. In Q4:2012, approximately 3,3 million youth were NEETs.

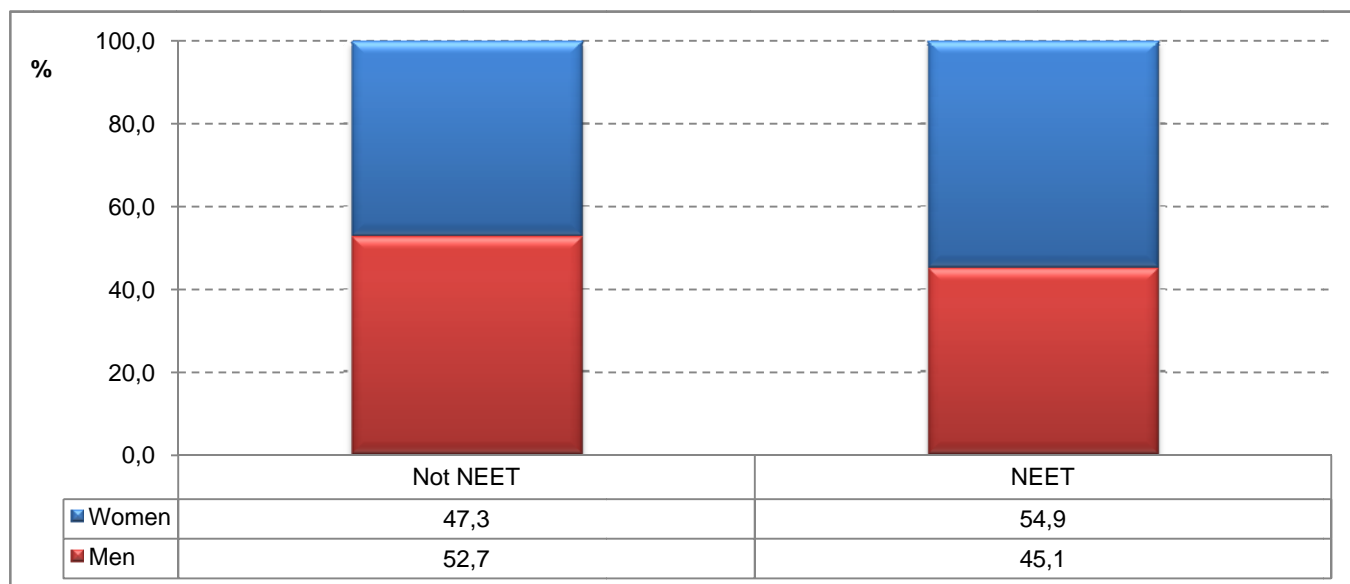
Figure 20: NEET rate¹ of youth aged 15–24 years by sex



¹Note: NEET rate = (Number of unemployed youth + number of youth not in the labour force) – (number of unemployed youth and youth not in the labour force who are in education or training) / Total number of youth.

In Q4:2012 a total NEET rate of 31,6% was observed for youth aged 15–24 years, with a NEET rate for women (34,9%) higher than the NEET rate for men (28,4%). Compared to Q3:2012 the NEET rate for women has decreased by 0,8 of a percentage point, while the NEET rate for men increased by 1,3 percentage points.

Figure 21: Share of 15–24 year olds who are not in the employment, education or training by sex



Women account for a bigger share of those aged 15–24 years who are not in employment, education or training; 54,9% were women and 45,1% were men (Figure 17).

PJ Lehohla
Statistician-General: Statistics South Africa

7. Technical notes

7.1. Response details

Table F: Response rates by province

Province	Oct–Dec 2012
	Per cent
Western Cape	91,9
Eastern Cape	98,3
Northern Cape	91,4
Free State	96,7
KwaZulu-Natal	97,8
North West	93,4
Gauteng	78,1
Mpumalanga	93,8
Limpopo	98,7
South Africa	92,4

7.2. Survey requirements and design

The Quarterly Labour Force Survey (QLFS) frame has been developed as a general-purpose household survey frame that can be used by all other household surveys irrespective of the sample size requirement of the survey. The sample size for the QLFS is roughly 30 000 dwellings per quarter.

The sample is based on information collected during the 2001 Population Census conducted by Stats SA. In preparation for the 2001 Census, the country was divided into 80 787 enumeration areas (EAs). Stats SA's household-based surveys use a master sample of primary sampling units (PSUs) which comprise EAs that are drawn from across the country.

The sample is designed to be representative at provincial level and within provinces at metro/non-metro level. Within the metros, the sample is further distributed by geography type. The four geography types are: urban formal, urban informal, farms and tribal. This implies, for example, that within a metropolitan area the sample is representative at the different geography types that may exist within that metro.

The current sample size is 3 080 PSUs. It is divided equally into four subgroups or panels called rotation groups. The rotation groups are designed in such a way that each of these groups has the same distribution pattern as that which is observed in the whole sample. They are numbered from one to four and these numbers also correspond to the quarters of the year in which the sample will be rotated for the particular group.

The sample for the redesigned Labour Force Survey (i.e. the QLFS) is based on a stratified two-stage design with probability proportional to size (PPS) sampling of PSUs in the first stage, and sampling of dwelling units (DUs) with systematic sampling in the second stage.

7.3. Sample rotation

Each quarter, a ¼ of the sampled dwellings rotate out of the sample and are replaced by new dwellings from the same PSU or the next PSU on the list. Thus, sampled dwellings will remain in the sample for four consecutive quarters. It should be noted that the sampling unit is the dwelling, and the unit of observation is the household. Therefore, if a household moves out of a dwelling after being in the sample for, say two quarters, and a new household moves in, the new household will be enumerated for the next two quarters. If no household moves into the sampled dwelling, the dwelling will be classified as vacant (unoccupied).

7.4. Weighting

The sampling weights for the data collected from the sampled households are constructed in such a manner that the responses could be properly expanded to represent the entire civilian population of South Africa. The weights are the result of calculations involving several factors, including original selection probabilities, adjustment for non-response, and benchmarking to known population estimates from the Demographic division of Stats SA.

7.5. Non-response adjustment

In general, imputation is used for item non-response (i.e. blanks within the questionnaire) and edits failure (i.e. invalid or inconsistent responses). The eligible households in the sampled dwellings can be divided into two response categories: respondents and non-respondents; and weight adjustment is applied to account for the non-respondent households (e.g. refusal, no contact, etc.).

7.6. Final survey weights

The final survey weights are constructed using regression estimation to calibrate to the known population counts at the national level population estimates (which are supplied by the Demography division) cross-classified by 5-year age groups, gender and race, and provincial population estimates by broad age groups. The 5-year age groups are: 0–4, 5–9, 10–14, etc., and 65 years and above. The provincial level age groups are: 0–14, 15–34, 35–64, and 65 years and over. The calibrated weights are constructed such that all persons in a household would have the same final weight.

7.7. Estimation

The final survey weights are used to obtain the estimates for various domains of interest, e.g. number of persons employed in agriculture in Western Cape, number of females employed in manufacturing, etc.

7.8. Reliability of the survey estimates

Since estimates are based on sample data, they differ from figures that would have been obtained from complete enumeration of the population using the same instrument. Results are subject to both sampling and non-sampling errors. Non-sampling errors include biases from inaccurate reporting, processing, and tabulation, etc., as well as errors from non-response and incomplete reporting. These types of errors cannot be measured readily. However, to some extent, non-sampling errors can be minimised through the procedures used for data collection, editing, quality control, and non-response adjustment. The variances of the survey estimates are used to measure sampling errors. The variance estimation methodology is discussed below.

(i) Variance estimation

The most commonly used methods for estimating variances of survey estimates from complex surveys such as the QLFS, are the Taylor-series Linearization, Jackknife Replication, Balanced Repeated Replication (BRR), and Bootstrap methods (Wolter, 2007)¹. The Fay's BRR method has been used for variance estimation in the QLFS because of its simplicity.

(ii) Coefficient of variation

It is more useful in many situations to assess the size of the standard error relative to the magnitude of the characteristic being measured (the standard error is defined as the square root of the variance). The **coefficient of variation** (cv) provides such a measure. It is the **ratio of the standard error of the survey estimate to the value of the estimate itself expressed as a percentage**. It is very useful in comparing the precision of several different survey estimates, where their sizes or scale differ from one another.

(iii) P-value of an estimate of change

The p-value corresponding to an estimate of change is the probability of observing a value larger than the particular observed value under the hypothesis that there is no real change. If p-value < 0,01, the difference is highly significant; if p-value is between 0,01 and 0,05, the difference is significant; and if p-value > 0,05, the difference is not significant.

¹Wolter KM, 2007. *Introduction to Variance Estimation*, 2nd Edition. New York: Springer-Verlag.

8. Definitions

Discouraged work-seeker is a person who was not employed during the reference period, wanted to work, was available to work/start a business but did not take active steps to find work during the last four weeks, provided that the main reason given for not seeking work was any of the following: no jobs available in the area; unable to find work requiring his/her skills; lost hope of finding any kind of work.

Economic activities are those that contribute to the production of goods and services in the country. There are two types of economic activities, namely: (1) Market production activities (work done for others and usually associated with pay or profit); and (2) Non-market production activities (work done for the benefit of the household, e.g. subsistence farming).

Employed persons are those aged 15–64 years who, during the reference week: did any work for at least one hour; or had a job or business but were not at work (temporarily absent).

Employment-to-population ratio (labour absorption rate) is the proportion of the working-age population that is employed.

Informal employment identifies persons who are in precarious employment situations irrespective of whether or not the entity for which they work is in the formal or informal sector. Persons in informal employment therefore consist of all persons in the informal sector; employees in the formal sector; and persons working in private households who are not entitled to basic benefits such as pension or medical aid contributions from their employer, and who do not have a written contract of employment.

Informal sector: The informal sector has the following two components:

- i) Employees working in establishments that employ less than five employees, who do not deduct income tax from their salaries/wages; and
- ii) Employers, own-account workers and persons helping unpaid in their household business who are not registered for either income tax or value-added tax.

The **labour force** comprises all persons who are employed plus all persons who are unemployed.

Labour force participation rate is the proportion of the working-age population that is either employed or unemployed.

Long-term unemployment: Persons in long-term unemployment are those individuals among the unemployed who were without work and trying to find a job or start a business for one year or more.

Not economically active: Persons aged 15–64 years who are neither employed nor unemployed in the reference week.

Persons in **underemployment (time-related)** are employed persons who were willing and available to work additional hours, whose total number of hours actually worked during the reference period was below 35 hours per week.

Underutilised labour comprises three groups as follows: persons who are underemployed, persons who are unemployed, and persons who are discouraged.

Unemployed persons are those (aged 15–64 years) who:

- a) Were not employed in the reference week **and**;
- b) Actively looked for work or tried to start a business in the four weeks preceding the survey interview **and**;
- c) Were available for work, i.e. would have been able to start work or a business in the reference week **or**;
- d) Had not actively looked for work in the past four weeks but had a job or business to start at a definite date in the future and were available.

Unemployment rate is the proportion of the labour force that is unemployed.

The **working-age population** comprises all persons aged 15–64 years

Appendix 1

Table 1: Population of working age (15–64 years)									
	Oct–Dec 2011	Jan–Mar 2012	Apr–Jun 2012	Jul–Sep 2012	Oct–Dec 2012	Qrt to Qrt change	Year on year change	Qrt to Qrt change	Year on year change
	Thousand	Thousand	Thousand	Thousand	Thousand	Thousand	Thousand	Percent	Percent
Both sexes	32 670	32 786	32 903	33 018	33 128	110	458	0,3	1,4
Women	16 797	16 847	16 898	16 948	16 995	47	198	0,3	1,2
Men	15 873	15 939	16 005	16 070	16 133	63	260	0,4	1,6
Population groups	32 670	32 786	32 903	33 018	33 128	110	458	0,3	1,4
Black/African	25 608	25 720	25 833	25 944	26 052	108	444	0,4	1,7
Coloured	3 046	3 055	3 063	3 071	3 079	8	33	0,3	1,1
Indian/Asian	934	938	943	947	951	4	17	0,4	1,8
White	3 081	3 073	3 064	3 056	3 047	-9	-34	-0,3	-1,1
South Africa	32 670	32 786	32 903	33 018	33 128	110	458	0,3	1,4
Western Cape	3 457	3 470	3 484	3 497	3 511	14	54	0,4	1,6
Eastern Cape	4 191	4 203	4 215	4 225	4 234	9	43	0,2	1,0
Northern Cape	723	725	727	730	732	2	9	0,3	1,2
Free State	1 877	1 881	1 884	1 888	1 891	3	14	0,2	0,7
KwaZulu-Natal	6 802	6 828	6 855	6 881	6 905	24	103	0,3	1,5
North West	2 049	2 055	2 061	2 067	2 073	6	24	0,3	1,2
Gauteng	7 847	7 873	7 899	7 926	7 954	28	107	0,4	1,4
Mpumalanga	2 346	2 356	2 366	2 376	2 386	10	40	0,4	1,7
Limpopo	3 378	3 394	3 411	3 427	3 442	15	64	0,4	1,9

Due to rounding, numbers do not necessarily add up to totals.

Table 2: Labour force characteristics by sex - All population groups

	Oct–Dec 2011	Jan–Mar 2012	Apr–Jun 2012	Jul–Sep 2012	Oct–Dec 2012	Qrt to Qrt change	Year on year change	Qrt to Qrt change	Year on year change
	Thousand	Thousand	Thousand	Thousand	Thousand	Thousand	Thousand	Percent	Percent
Both sexes									
Population 15–64 yrs	32 670	32 786	32 903	33 018	33 128	110	458	0,3	1,4
Labour Force	17 741	17 948	17 916	18 313	18 078	-235	337	-1,3	1,9
Employed	13 497	13 422	13 447	13 645	13 577	-68	80	-0,5	0,6
Formal sector (Non-agricultural)	9 616	9 509	9 571	9 663	9 611	-52	-5	-0,5	-0,1
Informal sector (Non-agricultural)	2 134	2 106	2 085	2 197	2 205	8	71	0,4	3,3
Agriculture	630	656	638	661	685	24	55	3,6	8,7
Private households	1 118	1 151	1 153	1 124	1 076	-48	-42	-4,3	-3,8
Unemployed	4 244	4 526	4 470	4 667	4 501	-166	257	-3,6	6,1
Not economically active	14 929	14 838	14 987	14 705	15 050	345	121	2,3	0,8
Discouraged work-seekers	2 315	2 335	2 311	2 170	2 257	87	-58	4,0	-2,5
Other(not economically active)	12 614	12 503	12 675	12 535	12 794	259	180	2,1	1,4
Rates (%)									
Unemployment rate	23,9	25,2	24,9	25,5	24,9	-0,6	1,0		
Employed / population ratio (Absorption)	41,3	40,9	40,9	41,3	41,0	-0,3	-0,3		
Labour force participation rate	54,3	54,7	54,5	55,5	54,6	-0,9	0,3		
Women									
Population 15–64 yrs	16 797	16 847	16 898	16 948	16 995	47	198	0,3	1,2
Labour Force	8 050	8 167	8 099	8 271	8 164	-107	114	-1,3	1,4
Employed	5 920	5 902	5 872	5 940	5 885	-55	-35	-0,9	-0,6
Formal sector (Non-agricultural)	3 982	3 944	3 941	3 971	3 944	-27	-38	-0,7	-1,0
Informal sector (Non-agricultural)	874	857	842	891	874	-17	0	-1,9	0,0
Agriculture	198	213	201	221	227	6	29	2,7	14,6
Private households	866	888	889	857	840	-17	-26	-2,0	-3,0
Unemployed	2 129	2 265	2 227	2 331	2 279	-52	150	-2,2	7,0
Not economically active	8 748	8 681	8 799	8 677	8 831	154	83	1,8	0,9
Discouraged work-seekers	1 281	1 281	1 325	1 213	1 268	55	-13	4,5	-1,0
Other(not economically active)	7 467	7 399	7 474	7 463	7 563	100	96	1,3	1,3
Rates (%)									
Unemployment rate	26,5	27,7	27,5	28,2	27,9	-0,3	1,4		
Employed / population ratio (Absorption)	35,2	35,0	34,7	35,0	34,6	-0,4	-0,6		
Labour force participation rate	47,9	48,5	47,9	48,8	48,0	-0,8	0,1		

Due to rounding, numbers do not necessarily add up to totals.

Note: Employment refers to market production activities.

Table 2: Labour force characteristics by sex - All population groups (concluded)

	Oct–Dec 2011	Jan–Mar 2012	Apr–Jun 2012	Jul–Sep 2012	Oct–Dec 2012	Qrt to Qrt change	Year on year change	Qrt to Qrt change	Year on year change
	Thousand	Thousand	Thousand	Thousand	Thousand	Thousand	Thousand	Percent	Percent
Men									
Population 15–64 yrs	15 873	15 939	16 005	16 070	16 133	63	260	0,4	1,6
Labour Force	9 692	9 781	9 817	10 042	9 914	-128	222	-1,3	2,3
Employed	7 577	7 520	7 574	7 706	7 693	-13	116	-0,2	1,5
Formal sector (Non-agricultural)	5 634	5 565	5 630	5 692	5 668	-24	34	-0,4	0,6
Informal sector (Non-agricultural)	1 260	1 249	1 243	1 306	1 331	25	71	1,9	5,6
Agriculture	432	443	438	440	458	18	26	4,1	6,0
Private households	251	263	264	268	236	-32	-15	-11,9	-6,0
Unemployed	2 115	2 261	2 243	2 336	2 222	-114	107	-4,9	5,1
Not economically active	6 181	6 158	6 187	6 028	6 219	191	38	3,2	0,6
Discouraged work-seekers	1 034	1 054	986	956	988	32	-46	3,3	-4,4
Other(not economically active)	5 147	5 104	5 201	5 072	5 231	159	84	3,1	1,6
Rates (%)									
Unemployment rate	21,8	23,1	22,8	23,3	22,4	-0,9	0,6		
Employed / population ratio (Absorption)	47,7	47,2	47,3	48,0	47,7	-0,3	0,0		
Labour force participation rate	61,1	61,4	61,3	62,5	61,5	-1,0	0,4		

Due to rounding, numbers do not necessarily add up to totals.

Note: Employment refers to market production activities.

Table 2.1: Labour force characteristics by population group

	Oct–Dec 2011	Jan–Mar 2012	Apr–Jun 2012	Jul–Sep 2012	Oct–Dec 2012	Qrt to Qrt change	Year on year change	Qrt to Qrt change	Year on year change
	Thousand	Thousand	Thousand	Thousand	Thousand	Thousand	Thousand	Percent	Percent
South Africa									
Population 15–64 yrs	32 670	32 786	32 903	33 018	33 128	110	458	0,3	1,4
Labour Force	17 741	17 948	17 916	18 313	18 078	-235	337	-1,3	1,9
Employed	13 497	13 422	13 447	13 645	13 577	-68	80	-0,5	0,6
Unemployed	4 244	4 526	4 470	4 667	4 501	-166	257	-3,6	6,1
Not economically active	14 929	14 838	14 987	14 705	15 050	345	121	2,3	0,8
Rates (%)									
Unemployment rate	23,9	25,2	24,9	25,5	24,9	-0,6	1,0		
Employed / population ratio (Absorption)	41,3	40,9	40,9	41,3	41,0	-0,3	-0,3		
Labour force participation rate	54,3	54,7	54,5	55,5	54,6	-0,9	0,3		
Black/African									
Population 15–64 yrs	25 608	25 720	25 833	25 944	26 052	108	444	0,4	1,7
Labour Force	13 171	13 350	13 383	13 714	13 514	-200	343	-1,5	2,6
Employed	9 519	9 470	9 544	9 719	9 660	-59	141	-0,6	1,5
Unemployed	3 651	3 879	3 839	3 995	3 854	-141	203	-3,5	5,6
Not economically active	12 437	12 370	12 449	12 230	12 538	308	101	2,5	0,8
Rates (%)									
Unemployment rate	27,7	29,1	28,7	29,1	28,5	-0,6	0,8		
Employed / population ratio (Absorption)	37,2	36,8	36,9	37,5	37,1	-0,4	-0,1		
Labour force participation rate	51,4	51,9	51,8	52,9	51,9	-1,0	0,5		
Coloured									
Population 15–64 yrs	3 046	3 055	3 063	3 071	3 079	8	33	0,3	1,1
Labour Force	1 926	1 955	1 936	1 979	1 961	-18	35	-0,9	1,8
Employed	1 520	1 488	1 473	1 494	1 501	7	-19	0,5	-1,3
Unemployed	406	468	464	485	460	-25	54	-5,2	13,3
Not economically active	1 121	1 099	1 127	1 092	1 118	26	-3	2,4	-0,3
Rates (%)									
Unemployment rate	21,1	23,9	24,0	24,5	23,5	-1,0	2,4		
Employed / population ratio (Absorption)	49,9	48,7	48,1	48,6	48,7	0,1	-1,2		
Labour force participation rate	63,2	64,0	63,2	64,4	63,7	-0,7	0,5		

Due to rounding, numbers do not necessarily add up to totals.

Note: Employment refers to market production activities.

Table 2.1: Labour force characteristics by population group (concluded)

	Oct–Dec 2011	Jan–Mar 2012	Apr–Jun 2012	Jul–Sep 2012	Oct–Dec 2012	Qrt to Qrt change	Year on year change	Qrt to Qrt change	Year on year change
	Thousand	Thousand	Thousand	Thousand	Thousand	Thousand	Thousand	Percent	Percent
Indian/Asian									
Population 15–64 yrs	934	938	943	947	951	4	17	0,4	1,8
Labour Force	533	551	529	556	570	14	37	2,5	6,9
Employed	487	500	479	491	496	5	9	1,0	1,8
Unemployed	45	51	50	65	74	9	29	13,8	64,4
Not economically active	402	388	413	391	381	-10	-21	-2,6	-5,2
Rates (%)									
Unemployment rate	8,5	9,3	9,5	11,7	13,0	1,3	4,5		
Employed / population ratio (Absorption)	52,1	53,3	50,8	51,8	52,2	0,4	0,1		
Labour force participation rate	57,0	58,7	56,1	58,7	59,9	1,2	2,9		
White									
Population 15–64 yrs	3 081	3 073	3 064	3 056	3 047	-9	-34	-0,3	-1,1
Labour Force	2 112	2 092	2 067	2 065	2 034	-31	-78	-1,5	-3,7
Employed	1 971	1 964	1 950	1 942	1 921	-21	-50	-1,1	-2,5
Unemployed	142	128	117	122	113	-9	-29	-7,4	-20,4
Not economically active	969	981	997	991	1 013	22	44	2,2	4,5
Rates (%)									
Unemployment rate	6,7	6,1	5,7	5,9	5,6	-0,3	-1,1		
Employed / population ratio (Absorption)	64,0	63,9	63,6	63,5	63,0	-0,5	-1,0		
Labour force participation rate	68,6	68,1	67,5	67,5	66,8	-0,7	-1,8		

Due to rounding, numbers do not necessarily add up to totals.

Note: Employment refers to market production activities.

Table 2.2: Labour force characteristics by province

	Oct–Dec 2011	Jan–Mar 2012	Apr–Jun 2012	Jul–Sep 2012	Oct–Dec 2012	Qrt to Qrt change	Year on year change	Qrt to Qrt change	Year on year change
	Thousand	Thousand	Thousand	Thousand	Thousand	Thousand	Thousand	Percent	Percent
South Africa									
Population 15–64 yrs	32 670	32 786	32 903	33 018	33 128	110	458	0,3	1,4
Labour Force	17 741	17 948	17 916	18 313	18 078	-235	337	-1,3	1,9
Employed	13 497	13 422	13 447	13 645	13 577	-68	80	-0,5	0,6
Unemployed	4 244	4 526	4 470	4 667	4 501	-166	257	-3,6	6,1
Not economically active	14 929	14 838	14 987	14 705	15 050	345	121	2,3	0,8
Discouraged work-seekers	2 315	2 335	2 311	2 170	2 257	87	-58	4,0	-2,5
Other	12 614	12 503	12 675	12 535	12 794	259	180	2,1	1,4
Rates (%)									
Unemployment rate	23,9	25,2	24,9	25,5	24,9	-0,6	1,0		
Employed / population ratio (Absorption)	41,3	40,9	40,9	41,3	41,0	-0,3	-0,3		
Labour force participation rate	54,3	54,7	54,5	55,5	54,6	-0,9	0,3		
Western Cape									
Population 15–64 yrs	3 457	3 470	3 484	3 497	3 511	14	54	0,4	1,6
Labour Force	2 349	2 393	2 363	2 421	2 396	-25	47	-1,0	2,0
Employed	1 842	1 847	1 815	1 806	1 824	18	-18	1,0	-1,0
Unemployed	507	546	548	615	573	-42	66	-6,8	13,0
Not economically active	1 108	1 077	1 121	1 076	1 114	38	6	3,5	0,5
Discouraged work-seekers	46	28	31	29	30	1	-16	3,4	-34,8
Other	1 062	1 049	1 090	1 047	1 084	37	22	3,5	2,1
Rates (%)									
Unemployment rate	21,6	22,8	23,2	25,4	23,9	-1,5	2,3		
Employed / population ratio (Absorption)	53,3	53,2	52,1	51,6	52,0	0,4	-1,3		
Labour force participation rate	67,9	69,0	67,8	69,2	68,3	-0,9	0,4		

Due to rounding, numbers do not necessarily add up to totals.

Note: Employment refers to market production activities.

Table 2.2: Labour force characteristics by province (continued)

	Oct–Dec 2011	Jan–Mar 2012	Apr–Jun 2012	Jul–Sep 2012	Oct–Dec 2012	Qrt to Qrt change	Year on year change	Qrt to Qrt change	Year on year change
	Thousand	Thousand	Thousand	Thousand	Thousand	Thousand	Thousand	Percent	Percent
Eastern Cape									
Population 15–64 yrs	4 191	4 203	4 215	4 225	4 234	9	43	0,2	1,0
Labour Force	1 821	1 783	1 819	1 870	1 797	-73	-24	-3,9	-1,3
Employed	1 326	1 279	1 298	1 330	1 261	-69	-65	-5,2	-4,9
Unemployed	494	504	521	539	536	-3	42	-0,6	8,5
Not economically active	2 370	2 420	2 396	2 356	2 437	81	67	3,4	2,8
Discouraged work-seekers	353	399	383	396	478	82	125	20,7	35,4
Other	2 018	2 020	2 012	1 959	1 959		-59	0,0	-2,9
Rates (%)									
Unemployment rate	27,1	28,3	28,6	28,8	29,8	1,0	2,7		
Employed / population ratio (Absorption)	31,6	30,4	30,8	31,5	29,8	-1,7	-1,8		
Labour force participation rate	43,4	42,4	43,2	44,2	42,4	-1,8	-1,0		
Northern Cape									
Population 15–64 yrs	723	725	727	730	732	2	9	0,3	1,2
Labour Force	397	382	401	414	408	-6	11	-1,4	2,8
Employed	291	286	281	290	292	2	1	0,7	0,3
Unemployed	106	95	120	124	116	-8	10	-6,5	9,4
Not economically active	326	343	327	315	324	9	-2	2,9	-0,6
Discouraged work-seekers	39	34	30	30	28	-2	-11	-6,7	-28,2
Other	287	310	296	285	296	11	9	3,9	3,1
Rates (%)									
Unemployment rate	26,7	24,9	29,9	30,0	28,4	-1,6	1,7		
Employed / population ratio (Absorption)	40,2	39,4	38,7	39,7	39,9	0,2	-0,3		
Labour force participation rate	54,9	52,6	55,2	56,7	55,7	-1,0	0,8		

Due to rounding, numbers do not necessarily add up to totals.

Note: Employment refers to market production activities.

Table 2.2: Labour force characteristics by province (continued)

	Oct-Dec 2011	Jan-Mar 2012	Apr-Jun 2012	Jul-Sep 2012	Oct-Dec 2012	Qrt to Qrt change	Year on year change	Qrt to Qrt change	Year on year change
	Thousand	Thousand	Thousand	Thousand	Thousand	Thousand	Thousand	Percent	Percent
Free State									
Population 15–64 yrs	1 877	1 881	1 884	1 888	1 891	3	14	0,2	0,7
Labour Force	1 067	1 087	1 085	1 081	1 096	15	29	1,4	2,7
Employed	753	737	728	736	732	-4	-21	-0,5	-2,8
Unemployed	314	350	357	346	363	17	49	4,9	15,6
Not economically active	810	794	799	806	795	-11	-15	-1,4	-1,9
Discouraged work-seekers	87	69	82	87	82	-5	-5	-5,7	-5,7
Other	723	725	717	719	713	-6	-10	-0,8	-1,4
Rates (%)									
Unemployment rate	29,4	32,2	32,9	32,0	33,2	1,2	3,8		
Employed / population ratio (Absorption)	40,1	39,2	38,6	39,0	38,7	-0,3	-1,4		
Labour force participation rate	56,8	57,8	57,6	57,3	57,9	0,6	1,1		
KwaZulu-Natal									
Population 15–64 yrs	6 802	6 828	6 855	6 881	6 905	24	103	0,3	1,5
Labour Force	3 176	3 168	3 143	3 218	3 215	-3	39	-0,1	1,2
Employed	2 562	2 519	2 520	2 533	2 493	-40	-69	-1,6	-2,7
Unemployed	614	649	623	685	722	37	108	5,4	17,6
Not economically active	3 626	3 660	3 712	3 663	3 690	27	64	0,7	1,8
Discouraged work-seekers	547	579	585	570	589	19	42	3,3	7,7
Other	3 079	3 081	3 127	3 092	3 101	9	22	0,3	0,7
Rates (%)									
Unemployment rate	19,3	20,5	19,8	21,3	22,5	1,2	3,2		
Employed / population ratio (Absorption)	37,7	36,9	36,8	36,8	36,1	-0,7	-1,6		
Labour force participation rate	46,7	46,4	45,8	46,8	46,6	-0,2	-0,1		

Due to rounding, numbers do not necessarily add up to totals.

Note: Employment refers to market production activities.

Table 2.2: Labour force characteristics by province (continued)

	Oct–Dec 2011	Jan–Mar 2012	Apr–Jun 2012	Jul–Sep 2012	Oct–Dec 2012	Qrt to Qrt change	Year on year change	Qrt to Qrt change	Year on year change
	Thousand	Thousand	Thousand	Thousand	Thousand	Thousand	Thousand	Percent	Percent
North West									
Population 15–64 yrs	2 049	2 055	2 061	2 067	2 073	6	24	0,3	1,2
Labour Force	928	954	961	994	973	-21	45	-2,1	4,8
Employed	700	704	709	745	747	2	47	0,3	6,7
Unemployed	228	250	252	248	227	-21	-1	-8,5	-0,4
Not economically active	1 121	1 101	1 101	1 074	1 100	26	-21	2,4	-1,9
Discouraged work-seekers	262	251	257	197	199	2	-63	1,0	-24,0
Other	859	850	844	877	901	24	42	2,7	4,9
Rates (%)									
Unemployment rate	24,6	26,2	26,2	25,0	23,3	-1,7	-1,3		
Employed / population ratio (Absorption	34,2	34,3	34,4	36,0	36,0	0,0	1,8		
Labour force participation rate	45,3	46,4	46,6	48,0	47,0	-1,0	1,7		
Gauteng									
Population 15–64 yrs	7 847	7 873	7 899	7 926	7 954	28	107	0,4	1,4
Labour Force	5 493	5 596	5 527	5 576	5 477	-99	-16	-1,8	-0,3
Employed	4 115	4 140	4 125	4 194	4 178	-16	63	-0,4	1,5
Unemployed	1 379	1 456	1 402	1 382	1 299	-83	-80	-6,0	-5,8
Not economically active	2 354	2 277	2 372	2 351	2 477	126	123	5,4	5,2
Discouraged work-seekers	309	293	284	259	294	35	-15	13,5	-4,9
Other	2 045	1 984	2 088	2 092	2 183	91	138	4,3	6,7
Rates (%)									
Unemployment rate	25,1	26,0	25,4	24,8	23,7	-1,1	-1,4		
Employed / population ratio (Absorption	52,4	52,6	52,2	52,9	52,5	-0,4	0,1		
Labour force participation rate	70,0	71,1	70,0	70,4	68,9	-1,5	-1,1		

Due to rounding, numbers do not necessarily add up to totals.

Note: Employment refers to market production activities.

Table 2.2: Labour force characteristics by province (concluded)

	Oct–Dec 2011	Jan–Mar 2012	Apr–Jun 2012	Jul–Sep 2012	Oct–Dec 2012	Qrt to Qrt change	Year on year change	Qrt to Qrt change	Year on year change
	Thousand	Thousand	Thousand	Thousand	Thousand	Thousand	Thousand	Percent	Percent
Mpumalanga									
Population 15–64 yrs	2 346	2 356	2 366	2 376	2 386	10	40	0,4	1,7
Labour Force	1 277	1 310	1 341	1 345	1 357	12	80	0,9	6,3
Employed	923	913	953	928	959	31	36	3,3	3,9
Unemployed	354	397	388	418	399	-19	45	-4,5	12,7
Not economically active	1 069	1 046	1 025	1 031	1 029	-2	-40	-0,2	-3,7
Discouraged work-seekers	232	257	229	243	226	-17	-6	-7,0	-2,6
Other	837	789	795	788	803	15	-34	1,9	-4,1
Rates (%)									
Unemployment rate	27,7	30,3	28,9	31,1	29,4	-1,7	1,7		
Employed / population ratio (Absorption)	39,3	38,8	40,3	39,1	40,2	1,1	0,9		
Labour force participation rate	54,4	55,6	56,7	56,6	56,9	0,3	2,5		
Limpopo									
Population 15–64 yrs	3 378	3 394	3 411	3 427	3 442	15	64	0,4	1,9
Labour Force	1 234	1 275	1 276	1 394	1 358	-36	124	-2,6	10,0
Employed	985	996	1 018	1 084	1 092	8	107	0,7	10,9
Unemployed	249	279	258	310	266	-44	17	-14,2	6,8
Not economically active	2 144	2 119	2 134	2 033	2 084	51	-60	2,5	-2,8
Discouraged work-seekers	441	424	430	357	330	-27	-111	-7,6	-25,2
Other	1 703	1 695	1 705	1 676	1 754	78	51	4,7	3,0
Rates (%)									
Unemployment rate	20,2	21,9	20,2	22,2	19,6	-2,6	-0,6		
Employed / population ratio (Absorption)	29,2	29,3	29,8	31,6	31,7	0,1	2,5		
Labour force participation rate	36,5	37,6	37,4	40,7	39,5	-1,2	3,0		

Due to rounding, numbers do not necessarily add up to totals.

Note: Employment refers to market production activities.

Table 2.3: Labour force characteristics by province - Expanded definition of unemployment

	Oct–Dec 2011	Jan–Mar 2012	Apr–Jun 2012	Jul–Sep 2012	Oct–Dec 2012	Qrt to Qrt change	Year on year change	Qrt to Qrt change	Year on year change
	Thousand	Thousand	Thousand	Thousand	Thousand	Thousand	Thousand	Percent	Percent
South Africa									
Population 15–64 yrs	32 670	32 786	32 903	33 018	33 128	110	458	0,3	1,4
Labour Force	20 893	21 167	21 070	21 412	21 179	-233	286	-1,1	1,4
Employed	13 497	13 422	13 447	13 645	13 577	-68	80	-0,5	0,6
Unemployed	7 396	7 745	7 623	7 767	7 602	-165	206	-2,1	2,8
Not economically active	11 777	11 619	11 833	11 606	11 949	343	172	3,0	1,5
Rates (%)									
Unemployment rate	35,4	36,6	36,2	36,3	35,9	-0,4	0,5		
Employed / population ratio (Absorption)	41,3	40,9	40,9	41,3	41,0	-0,3	-0,3		
Labour force participation rate	64,0	64,6	64,0	64,8	63,9	-0,9	-0,1		
Western Cape									
Population 15–64 yrs	3 457	3 470	3 484	3 497	3 511	14	54	0,4	1,6
Labour Force	2 433	2 446	2 420	2 472	2 452	-20	19	-0,8	0,8
Employed	1 842	1 847	1 815	1 806	1 824	18	-18	1,0	-1,0
Unemployed	590	599	605	666	628	-38	38	-5,7	6,4
Not economically active	1 024	1 024	1 063	1 026	1 059	33	35	3,2	3,4
Rates (%)									
Unemployment rate	24,3	24,5	25,0	26,9	25,6	-1,3	1,3		
Employed / population ratio (Absorption)	53,3	53,2	52,1	51,6	52,0	0,4	-1,3		
Labour force participation rate	70,4	70,5	69,5	70,7	69,8	-0,9	-0,6		
Eastern Cape									
Population 15–64 yrs	4 191	4 203	4 215	4 225	4 234	9	43	0,2	1,0
Labour Force	2 243	2 245	2 255	2 333	2 341	8	98	0,3	4,4
Employed	1 326	1 279	1 298	1 330	1 261	-69	-65	-5,2	-4,9
Unemployed	917	967	957	1 002	1 080	78	163	7,8	17,8
Not economically active	1 947	1 958	1 960	1 893	1 893		-54	0,0	-2,8
Rates (%)									
Unemployment rate	40,9	43,1	42,4	43,0	46,1	3,1	5,2		
Employed / population ratio (Absorption)	31,6	30,4	30,8	31,5	29,8	-1,7	-1,8		
Labour force participation rate	53,5	53,4	53,5	55,2	55,3	0,1	1,8		

Due to rounding, numbers do not necessarily add up to totals.

Note: Employment refers to market production activities.

Table 2.3: Labour force characteristics by province - Expanded definition of unemployment (continued)

	Oct–Dec 2011	Jan–Mar 2012	Apr–Jun 2012	Jul–Sep 2012	Oct–Dec 2012	Qrt to Qrt change	Year on year change	Qrt to Qrt change	Year on year change
	Thousand	Thousand	Thousand	Thousand	Thousand	Thousand	Thousand	Percent	Percent
Northern Cape									
Population 15-64 yrs	723	725	727	730	732	2	9	0,3	1,2
Labour Force	448	432	446	463	450	-13	2	-2,8	0,4
Employed	291	286	281	290	292	2	1	0,7	0,3
Unemployed	157	146	166	172	157	-15		-8,7	0,0
Not economically active	275	293	281	267	282	15	7	5,6	2,5
Rates (%)									
Unemployment rate	35,0	33,8	37,1	37,2	35,0	-2,2	0,0		
Employed / population ratio (Absorption)	40,2	39,4	38,7	39,7	39,9	0,2	-0,3		
Labour force participation rate	62,0	59,6	61,5	63,3	61,3	-2,0	-0,7		
Free State									
Population 15-64 yrs	1 877	1 881	1 884	1 888	1 891	3	14	0,2	0,7
Labour Force	1 197	1 207	1 206	1 220	1 222	2	25	0,2	2,1
Employed	753	737	728	736	732	-4	-21	-0,5	-2,8
Unemployed	444	470	478	484	489	5	45	1,0	10,1
Not economically active	680	674	678	668	670	2	-10	0,3	-1,5
Rates (%)									
Unemployment rate	37,1	38,9	39,6	39,7	40,0	0,3	2,9		
Employed / population ratio (Absorption)	40,1	39,2	38,6	39,0	38,7	-0,3	-1,4		
Labour force participation rate	63,8	64,2	64,0	64,6	64,6	0,0	0,8		
KwaZulu-Natal									
Population 15-64 yrs	6 802	6 828	6 855	6 881	6 905	24	103	0,3	1,5
Labour Force	4 038	4 152	4 097	4 186	4 092	-94	54	-2,2	1,3
Employed	2 562	2 519	2 520	2 533	2 493	-40	-69	-1,6	-2,7
Unemployed	1 476	1 633	1 577	1 652	1 599	-53	123	-3,2	8,3
Not economically active	2 764	2 676	2 758	2 695	2 814	119	50	4,4	1,8
Rates (%)									
Unemployment rate	36,6	39,3	38,5	39,5	39,1	-0,4	2,5		
Employed / population ratio (Absorption)	37,7	36,9	36,8	36,8	36,1	-0,7	-1,6		
Labour force participation rate	59,4	60,8	59,8	60,8	59,3	-1,5	-0,1		

Due to rounding, numbers do not necessarily add up to totals.

Note: Employment refers to market production activities.

Table 2.3: Labour force characteristics by province - Expanded definition of unemployment (continued)

	Oct–Dec 2011	Jan–Mar 2012	Apr–Jun 2012	Jul–Sep 2012	Oct–Dec 2012	Qrt to Qrt change	Year on year change	Qrt to Qrt change	Year on year change
	Thousand	Thousand	Thousand	Thousand	Thousand	Thousand	Thousand	Percent	Percent
North West									
Population 15–64 yrs	2 049	2 055	2 061	2 067	2 073	6	24	0,3	1,2
Labour Force	1 272	1 292	1 292	1 273	1 267	-6	-5	-0,5	-0,4
Employed	700	704	709	745	747	2	47	0,3	6,7
Unemployed	572	587	583	528	520	-8	-52	-1,5	-9,1
Not economically active	777	763	769	794	806	12	29	1,5	3,7
Rates (%)									
Unemployment rate	45,0	45,5	45,1	41,5	41,0	-0,5	-4,0		
Employed / population ratio (Absorption)	34,2	34,3	34,4	36,0	36,0	0,0	1,8		
Labour force participation rate	62,1	62,8	62,7	61,6	61,1	-0,5	-1,0		
Gauteng									
Population 15–64 yrs	7 847	7 873	7 899	7 926	7 954	28	107	0,4	1,4
Labour Force	5 867	5 942	5 879	5 920	5 866	-54	-1	-0,9	0,0
Employed	4 115	4 140	4 125	4 194	4 178	-16	63	-0,4	1,5
Unemployed	1 752	1 802	1 754	1 726	1 688	-38	-64	-2,2	-3,7
Not economically active	1 980	1 931	2 021	2 007	2 088	81	108	4,0	5,5
Rates (%)									
Unemployment rate	29,9	30,3	29,8	29,2	28,8	-0,4	-1,1		
Employed / population ratio (Absorption)	52,4	52,6	52,2	52,9	52,5	-0,4	0,1		
Labour force participation rate	74,8	75,5	74,4	74,7	73,7	-1,0	-1,1		
Mpumalanga									
Population 15–64 yrs	2 346	2 356	2 366	2 376	2 386	10	40	0,4	1,7
Labour Force	1 614	1 665	1 667	1 701	1 698	-3	84	-0,2	5,2
Employed	923	913	953	928	959	31	36	3,3	3,9
Unemployed	691	752	714	773	739	-34	48	-4,4	6,9
Not economically active	732	691	699	675	689	14	-43	2,1	-5,9
Rates (%)									
Unemployment rate	42,8	45,2	42,8	45,4	43,5	-1,9	0,7		
Employed / population ratio (Absorption)	39,3	38,8	40,3	39,1	40,2	1,1	0,9		
Labour force participation rate	68,8	70,7	70,5	71,6	71,2	-0,4	2,4		

Due to rounding, numbers do not necessarily add up to totals.

Note: Employment refers to market production activities.

Table 2.3: Labour force characteristics by province - Expanded definition of unemployment (concluded)

	Oct–Dec 2011	Jan–Mar 2012	Apr–Jun 2012	Jul–Sep 2012	Oct–Dec 2012	Qrt to Qrt change	Year on year change	Qrt to Qrt change	Year on year change
	Thousand	Thousand	Thousand	Thousand	Thousand	Thousand	Thousand	Percent	Percent
Limpopo									
Population 15–64 yrs	3 378	3 394	3 411	3 427	3 442	15	64	0,4	1,9
Labour Force	1 781	1 786	1 807	1 846	1 792	-54	11	-2,9	0,6
Employed	985	996	1 018	1 084	1 092	8	107	0,7	10,9
Unemployed	796	790	789	762	701	-61	-95	-8,0	-11,9
Not economically active	1 597	1 608	1 603	1 581	1 650	69	53	4,4	3,3
Rates (%)									
Unemployment rate	44,7	44,2	43,7	41,3	39,1	-2,2	-5,6		
Employed / population ratio (Absorption)	29,2	29,3	29,8	31,6	31,7	0,1	2,5		
Labour force participation rate	52,7	52,6	53,0	53,9	52,1	-1,8	-0,6		

Due to rounding, numbers do not necessarily add up to totals.

Note: Employment refers to market production activities.

Table 3.1: Employed by industry and sex - South Africa

	Oct-Dec 2011	Jan-Mar 2012	Apr-Jun 2012	Jul-Sep 2012	Oct-Dec 2012	Qrt to Qrt change	Year on year change	Qrt to Qrt change	Year on year change
	Thousand	Thousand	Thousand	Thousand	Thousand	Thousand	Thousand	Thousand	Thousand
Both sexes	13 497	13 422	13 447	13 645	13 577	-68	80	-0,5	0,6
Agriculture	630	656	638	661	685	24	55	3,6	8,7
Mining	327	336	357	349	357	8	30	2,3	9,2
Manufacturing	1 789	1 722	1 678	1 727	1 730	3	-59	0,2	-3,3
Utilities	81	91	98	105	98	-7	17	-6,7	21,0
Construction	1 057	986	1 012	1 046	1 061	15	4	1,4	0,4
Trade	3 060	3 057	2 966	2 962	2 921	-41	-139	-1,4	-4,5
Transport	788	783	791	834	816	-18	28	-2,2	3,6
Finance	1 739	1 741	1 737	1 811	1 804	-7	65	-0,4	3,7
Community and social services	2 902	2 891	3 012	3 025	3 028	3	126	0,1	4,3
Private households	1 118	1 151	1 153	1 124	1 076	-48	-42	-4,3	-3,8
Other	6	7	5	1	2	1	-4	100,0	-66,7
Women	5 920	5 902	5 872	5 940	5 885	-55	-35	-0,9	-0,6
Agriculture	198	213	201	221	227	6	29	2,7	14,6
Mining	34	43	52	47	49	2	15	4,3	44,1
Manufacturing	581	557	516	561	557	-4	-24	-0,7	-4,1
Utilities	14	14	19	27	22	-5	8	-18,5	57,1
Construction	118	107	120	127	141	14	23	11,0	19,5
Trade	1 469	1 452	1 391	1 398	1 414	16	-55	1,1	-3,7
Transport	167	162	155	165	142	-23	-25	-13,9	-15,0
Finance	743	748	744	739	747	8	4	1,1	0,5
Community and social services	1 729	1 715	1 785	1 798	1 744	-54	15	-3,0	0,9
Private households	866	888	889	857	840	-17	-26	-2,0	-3,0
Other	2	3	2		1	1	-1	.	-50,0
Men	7 577	7 520	7 574	7 706	7 693	-13	116	-0,2	1,5
Agriculture	432	443	438	440	458	18	26	4,1	6,0
Mining	294	293	306	302	308	6	14	2,0	4,8
Manufacturing	1 208	1 165	1 162	1 166	1 173	7	-35	0,6	-2,9
Utilities	67	77	80	78	76	-2	9	-2,6	13,4
Construction	939	880	892	919	920	1	-19	0,1	-2,0
Trade	1 592	1 606	1 574	1 564	1 507	-57	-85	-3,6	-5,3
Transport	621	621	636	669	673	4	52	0,6	8,4
Finance	996	993	993	1 072	1 057	-15	61	-1,4	6,1
Community and social services	1 173	1 176	1 227	1 227	1 284	57	111	4,6	9,5
Private households	251	263	264	268	236	-32	-15	-11,9	-6,0
Other	5	4	3		0		-5		-100,0

Table 3.2: Employed by industry and province

	Oct–Dec 2011	Jan–Mar 2012	Apr–Jun 2012	Jul–Sep 2012	Oct–Dec 2012	Qrt to Qrt change	Year on year change	Qrt to Qrt change	Year on year change
	Thousand	Thousand	Thousand	Thousand	Thousand	Thousand	Thousand	Thousand	Thousand
Agriculture	630	656	638	661	685	24	55	3,6	8,7
Western Cape	94	127	102	123	129	6	35	4,9	37,2
Eastern Cape	64	47	60	60	60	0	-4	0,0	-6,3
Northern Cape	55	47	43	45	49	4	-6	8,9	-10,9
Free State	62	72	56	68	63	-5	1	-7,4	1,6
KwaZulu-Natal	95	91	91	89	99	10	4	11,2	4,2
North West	30	38	34	31	28	-3	-2	-9,7	-6,7
Gauteng	64	62	69	49	45	-4	-19	-8,2	-29,7
Mpumalanga	75	83	85	87	95	8	20	9,2	26,7
Limpopo	90	88	99	109	117	8	27	7,3	30,0
Mining	327	336	357	349	357	8	30	2,3	9,2
Western Cape	4	3	4	2	3	1	-1	50,0	-25,0
Eastern Cape	.	.	3	1	2	1	.	100,0	.
Northern Cape	13	16	19	17	17		4	0,0	30,8
Free State	27	28	26	27	27			0,0	0,0
KwaZulu-Natal	13	18	19	18	30	12	17	66,7	130,8
North West	110	109	120	115	122	7	12	6,1	10,9
Gauteng	30	28	32	30	23	-7	-7	-23,3	-23,3
Mpumalanga	69	64	67	60	59	-1	-10	-1,7	-14,5
Limpopo	61	70	68	78	75	-3	14	-3,8	23,0
Manufacturing	1 789	1 722	1 678	1 727	1 730	3	-59	0,2	-3,3
Western Cape	320	294	280	287	279	-8	-41	-2,8	-12,8
Eastern Cape	155	158	158	163	174	11	19	6,7	12,3
Northern Cape	15	16	10	11	11		-4	0,0	-26,7
Free State	64	54	57	59	71	12	7	20,3	10,9
KwaZulu-Natal	428	386	389	392	361	-31	-67	-7,9	-15,7
North West	62	56	56	55	59	4	-3	7,3	-4,8
Gauteng	608	608	589	607	608	1	0	0,2	0,0
Mpumalanga	76	81	76	77	96	19	20	24,7	26,3
Limpopo	62	69	63	76	71	-5	9	-6,6	14,5

For all values of 10 000 or lower the sample size is too small for reliable estimates.
Due to rounding, numbers do not necessarily add up to totals.

Table 3.2: Employed by industry and province (continued)

	Oct-Dec 2011	Jan-Mar 2012	Apr-Jun 2012	Jul-Sep 2012	Oct-Dec 2012	Qrt to Qrt change	Year on year change	Qrt to Qrt change	Year on year change
	Thousand	Thousand	Thousand	Thousand	Thousand	Thousand	Thousand	Percent	Percent
Utilities	81	91	98	105	98	-7	17	-6,7	21,0
Western Cape	6	4	6	13	12	-1	6	-7,7	100,0
Eastern Cape	5	7	7	6	3	-3	-2	-50,0	-40,0
Northern Cape	3	4	3	3	3	0	0	0,0	0,0
Free State	3	5	6	6	3	-3	0	-50,0	0,0
KwaZulu-Natal	7	9	13	10	14	4	7	40,0	100,0
North West	3	3	5	8	5	-3	2	-37,5	66,7
Gauteng	25	26	22	28	29	1	4	3,6	16,0
Mpumalanga	22	24	26	22	17	-5	-5	-22,7	-22,7
Limpopo	7	8	11	9	12	3	5	33,3	71,4
Construction	1 057	986	1 012	1 046	1 061	15	4	1,4	0,4
Western Cape	144	135	144	135	138	3	-6	2,2	-4,2
Eastern Cape	124	108	106	143	131	-12	7	-8,4	5,6
Northern Cape	19	19	20	14	18	4	-1	28,6	-5,3
Free State	49	47	48	51	52	1	3	2,0	6,1
KwaZulu-Natal	239	210	211	215	220	5	-19	2,3	-7,9
North West	49	46	45	42	43	1	-6	2,4	-12,2
Gauteng	259	265	269	279	287	8	28	2,9	10,8
Mpumalanga	78	64	76	66	73	7	-5	10,6	-6,4
Limpopo	95	92	94	101	99	-2	4	-2,0	4,2
Trade	3 060	3 057	2 966	2 962	2 921	-41	-139	-1,4	-4,5
Western Cape	406	391	395	383	378	-5	-28	-1,3	-6,9
Eastern Cape	308	327	324	313	284	-29	-24	-9,3	-7,8
Northern Cape	42	41	42	48	50	2	8	4,2	19,0
Free State	173	160	156	149	150	1	-23	0,7	-13,3
KwaZulu-Natal	614	570	545	524	497	-27	-117	-5,2	-19,1
North West	138	152	145	151	142	-9	4	-6,0	2,9
Gauteng	914	944	851	910	932	22	18	2,4	2,0
Mpumalanga	222	228	249	224	226	2	4	0,9	1,8
Limpopo	242	246	259	259	261	2	19	0,8	7,9

For all values of 10 000 or lower the sample size is too small for reliable estimates.

Due to rounding, numbers do not necessarily add up to totals.

Table 3.2: Employed by industry and province (continued)

	Oct–Dec 2011	Jan–Mar 2012	Apr–Jun 2012	Jul–Sep 2012	Oct–Dec 2012	Qrt to Qrt change	Year on year change	Qrt to Qrt change	Year on year change
	Thousand	Thousand	Thousand	Thousand	Thousand	Thousand	Thousand	Percent	Percent
Transport	788	783	791	834	816	-18	28	-2,2	3,6
Western Cape	96	100	96	92	96	4		4,3	0,0
Eastern Cape	75	75	69	69	65	-4	-10	-5,8	-13,3
Northern Cape	10	10	8	10	10		0	0,0	0,0
Free State	35	27	30	32	28	-4	-7	-12,5	-20,0
KwaZulu-Natal	171	180	196	206	186	-20	15	-9,7	8,8
North West	26	26	30	31	33	2	7	6,5	26,9
Gauteng	298	263	254	293	296	3	-2	1,0	-0,7
Mpumalanga	39	48	56	47	53	6	14	12,8	35,9
Limpopo	39	55	53	54	49	-5	10	-9,3	25,6
Finance	1 739	1 741	1 737	1 811	1 804	-7	65	-0,4	3,7
Western Cape	281	293	282	273	305	32	24	11,7	8,5
Eastern Cape	147	126	102	120	106	-14	-41	-11,7	-27,9
Northern Cape	27	24	25	29	23	-6	-4	-20,7	-14,8
Free State	62	70	76	66	66		4	0,0	6,5
KwaZulu-Natal	277	276	282	298	302	4	25	1,3	9,0
North West	56	52	45	64	78	14	22	21,9	39,3
Gauteng	740	761	786	804	773	-31	33	-3,9	4,5
Mpumalanga	84	79	85	97	83	-14	-1	-14,4	-1,2
Limpopo	66	58	55	61	68	7	2	11,5	3,0
Community and social services	2 902	2 891	3 012	3 025	3 028	3	126	0,1	4,3
Western Cape	374	382	391	377	388	11	14	2,9	3,7
Eastern Cape	339	336	363	348	320	-28	-19	-8,0	-5,6
Northern Cape	79	83	89	87	83	-4	4	-4,6	5,1
Free State	192	181	176	180	183	3	-9	1,7	-4,7
KwaZulu-Natal	516	540	544	560	566	6	50	1,1	9,7
North West	165	161	164	175	184	9	19	5,1	11,5
Gauteng	830	824	900	899	888	-11	58	-1,2	7,0
Mpumalanga	163	149	148	158	168	10	5	6,3	3,1
Limpopo	244	234	236	242	249	7	5	2,9	2,0

For all values of 10 000 or lower the sample size is too small for reliable estimates.
Due to rounding, numbers do not necessarily add up to totals.

Table 3.2: Employed by industry and province (concluded)									
	Oct–Dec 2011	Jan–Mar 2012	Apr–Jun 2012	Jul–Sep 2012	Oct–Dec 2012	Qrt to Qrt change	Year on year change	Qrt to Qrt change	Year on year change
	Thousand	Thousand	Thousand	Thousand	Thousand	Thousand	Thousand	Percent	Percent
Private households	1 118	1 151	1 153	1 124	1 076	-48	-42	-4,3	-3,8
Western Cape	117	117	117	119	95	-24	-22	-20,2	-18,8
Eastern Cape	110	94	106	109	116	7	6	6,4	5,5
Northern Cape	28	25	23	26	30	4	2	15,4	7,1
Free State	85	92	97	96	91	-5	6	-5,2	7,1
KwaZulu-Natal	201	239	229	222	217	-5	16	-2,3	8,0
North West	61	60	64	73	52	-21	-9	-28,8	-14,8
Gauteng	341	354	349	296	296		-45	0,0	-13,2
Mpumalanga	95	94	86	88	88		-7	0,0	-7,4
Limpopo	78	76	81	96	90	-6	12	-6,3	15,4

For all values of 10 000 or lower the sample size is too small for reliable estimates.
Due to rounding, numbers do not necessarily add up to totals.

Table 3.3: Employed by sector and industry - South Africa

	Oct–Dec 2011	Jan–Mar 2012	Apr–Jun 2012	Jul–Sep 2012	Oct–Dec 2012	Qrt to Qrt change	Year on year change	Qrt to Qrt change	Year on year change
	Thousand	Thousand	Thousand	Thousand	Thousand	Thousand	Thousand	Percent	Percent
Total employed	13 497	13 422	13 447	13 645	13 577	-68	80	-0,5	0,6
Formal and informal sector (Non-agricultural)	11 750	11 615	11 656	11 860	11 816	-44	66	-0,4	0,6
Mining	327	336	357	349	357	8	30	2,3	9,2
Manufacturing	1 789	1 722	1 678	1 727	1 730	3	-59	0,2	-3,3
Utilities	81	91	98	105	98	-7	17	-6,7	21,0
Construction	1 057	986	1 012	1 046	1 061	15	4	1,4	0,4
Trade	3 060	3 057	2 966	2 962	2 921	-41	-139	-1,4	-4,5
Transport	788	783	791	834	816	-18	28	-2,2	3,6
Finance	1 739	1 741	1 737	1 811	1 804	-7	65	-0,4	3,7
Community and social services	2 902	2 891	3 012	3 025	3 028	3	126	0,1	4,3
Other	6	7	5	1	2	1	-4	100,0	-66,7
Formal sector (Non- agricultural)	9 616	9 509	9 571	9 663	9 611	-52	-5	-0,5	-0,1
Mining	327	335	357	348	354	6	27	1,7	8,3
Manufacturing	1 586	1 540	1 507	1 531	1 538	7	-48	0,5	-3,0
Utilities	80	90	97	103	97	-6	17	-5,8	21,3
Construction	737	659	719	723	743	20	6	2,8	0,8
Trade	2 064	2 062	1 965	1 943	1 898	-45	-166	-2,3	-8,0
Transport	597	575	604	637	607	-30	10	-4,7	1,7
Finance	1 598	1 607	1 605	1 671	1 671	0	73	0,0	4,6
Community and social services	2 622	2 634	2 712	2 705	2 701	-4	79	-0,1	3,0
Other	5	7	5	1	2	1	-3	100,0	-60,0
Informal sector (Non-agricultural)	2 134	2 106	2 085	2 197	2 205	8	71	0,4	3,3
Mining	0	1	0	1	4	3	4	300,0	.
Manufacturing	203	182	171	196	192	-4	-11	-2,0	-5,4
Utilities	0	1	2	2	2	0	2	0,0	.
Construction	320	328	292	323	317	-6	-3	-1,9	-0,9
Trade	997	995	1 000	1 019	1 022	3	25	0,3	2,5
Transport	192	208	187	198	208	10	16	5,1	8,3
Finance	141	134	132	140	133	-7	-8	-5,0	-5,7
Community and social services	280	257	300	320	328	8	48	2,5	17,1
Other	1								
Agriculture	630	656	638	661	685	24	55	3,6	8,7
Private households	1 118	1 151	1 153	1 124	1 076	-48	-42	-4,3	-3,8

For all values of 10 000 or lower the sample size is too small for reliable estimates.

Due to rounding, numbers do not necessarily add up to totals.

Table 3.4: Employed by province and sector

	Oct–Dec 2011	Jan–Mar 2012	Apr–Jun 2012	Jul–Sep 2012	Oct–Dec 2012	Qrt to Qrt change	Year on year change	Qrt to Qrt change	Year on year change
	Thousand	Thousand	Thousand	Thousand	Thousand	Thousand	Thousand	Percent	Percent
South Africa	13 497	13 422	13 447	13 645	13 577	-68	80	-0,5	0,6
Formal sector (Non-agricultural)	9 616	9 509	9 571	9 663	9 611	-52	-5	-0,5	-0,1
Informal sector (Non-agricultural)	2 134	2 106	2 085	2 197	2 205	8	71	0,4	3,3
Agriculture	630	656	638	661	685	24	55	3,6	8,7
Private households	1 118	1 151	1 153	1 124	1 076	-48	-42	-4,3	-3,8
Western Cape	1 842	1 847	1 815	1 806	1 824	18	-18	1,0	-1,0
Formal sector (Non-agricultural)	1 455	1 435	1 435	1 400	1 422	22	-33	1,6	-2,3
Informal sector (Non-agricultural)	176	168	162	163	177	14	1	8,6	0,6
Agriculture	94	127	102	123	129	6	35	4,9	37,2
Private households	117	117	117	119	95	-24	-22	-20,2	-18,8
Eastern Cape	1 326	1 279	1 298	1 330	1 261	-69	-65	-5,2	-4,9
Formal sector (Non-agricultural)	903	852	877	868	830	-38	-73	-4,4	-8,1
Informal sector (Non-agricultural)	250	286	254	294	255	-39	5	-13,3	2,0
Agriculture	64	47	60	60	60	0	-4	0,0	-6,3
Private households	110	94	106	109	116	7	6	6,4	5,5
Northern Cape	291	286	281	290	292	2	1	0,7	0,3
Formal sector (Non-agricultural)	178	186	189	186	180	-6	2	-3,2	1,1
Informal sector (Non-agricultural)	30	29	26	33	34	1	4	3,0	13,3
Agriculture	55	47	43	45	49	4	-6	8,9	-10,9
Private households	28	25	23	26	30	4	2	15,4	7,1
Free State	753	737	728	736	732	-4	-21	-0,5	-2,8
Formal sector (Non-agricultural)	488	472	475	465	466	1	-22	0,2	-4,5
Informal sector (Non-agricultural)	118	101	100	106	113	7	-5	6,6	-4,2
Agriculture	62	72	56	68	63	-5	1	-7,4	1,6
Private households	85	92	97	96	91	-5	6	-5,2	7,1
KwaZulu-Natal	2 562	2 519	2 520	2 533	2 493	-40	-69	-1,6	-2,7
Formal sector (Non-agricultural)	1 757	1 729	1 757	1 814	1 791	-23	34	-1,3	1,9
Informal sector (Non-agricultural)	509	460	443	408	386	-22	-123	-5,4	-24,2
Agriculture	95	91	91	89	99	10	4	11,2	4,2
Private households	201	239	229	222	217	-5	16	-2,3	8,0

For all values of 10 000 or lower the sample size is too small for reliable estimates.
Due to rounding, numbers do not necessarily add up to totals.

Table 3.4: Employed by province and sector (concluded)

	Oct–Dec 2011	Jan–Mar 2012	Apr–Jun 2012	Jul–Sep 2012	Oct–Dec 2012	Qrt to Qrt change	Year on year change	Qrt to Qrt change	Year on year change
	Thousand	Thousand	Thousand	Thousand	Thousand	Thousand	Thousand	Percent	Percent
North West	700	704	709	745	747	2	47	0,3	6,7
Formal sector (Non-agricultural)	519	514	505	535	560	25	41	4,7	7,9
Informal sector (Non-agricultural)	89	92	106	106	107	1	18	0,9	20,2
Agriculture	30	38	34	31	28	-3	-2	-9,7	-6,7
Private households	61	60	64	73	52	-21	-9	-28,8	-14,8
Gauteng	4 115	4 140	4 125	4 194	4 178	-16	63	-0,4	1,5
Formal sector (Non-agricultural)	3 217	3 233	3 227	3 301	3 253	-48	36	-1,5	1,1
Informal sector (Non-agricultural)	492	491	479	548	584	36	92	6,6	18,7
Agriculture	64	62	69	49	45	-4	-19	-8,2	-29,7
Private households	341	354	349	296	296		-45	0,0	-13,2
Mpumalanga	923	913	953	928	959	31	36	3,3	3,9
Formal sector (Non-agricultural)	555	548	568	554	547	-7	-8	-1,3	-1,4
Informal sector (Non-agricultural)	197	189	214	199	228	29	31	14,6	15,7
Agriculture	75	83	85	87	95	8	20	9,2	26,7
Private households	95	94	86	88	88		-7	0,0	-7,4
Limpopo	985	996	1 018	1 084	1 092	8	107	0,7	10,9
Formal sector (Non-agricultural)	544	541	538	540	563	23	19	4,3	3,5
Informal sector (Non-agricultural)	273	290	301	339	322	-17	49	-5,0	17,9
Agriculture	90	88	99	109	117	8	27	7,3	30,0
Private households	78	76	81	96	90	-6	12	-6,3	15,4

For all values of 10 000 or lower the sample size is too small for reliable estimates.
Due to rounding, numbers do not necessarily add up to totals.

Table 3.5: Employed by sex and occupation - South Africa

	Oct–Dec 2011	Jan–Mar 2012	Apr–Jun 2012	Jul–Sep 2012	Oct–Dec 2012	Qrt to Qrt change	Year on year change	Qrt to Qrt change	Year on year change
	Thousand	Thousand	Thousand	Thousand	Thousand	Thousand	Thousand	Percent	Percent
Both sexes	13 497	13 422	13 447	13 645	13 577	-68	80	-0,5	0,6
Manager	1 130	1 102	1 062	1 135	1 075	-60	-55	-5,3	-4,9
Professional	745	747	816	798	805	7	60	0,9	8,1
Technician	1 498	1 532	1 577	1 523	1 503	-20	5	-1,3	0,3
Clerk	1 523	1 419	1 406	1 390	1 443	53	-80	3,8	-5,3
Sales and services	1 960	1 969	1 956	2 062	1 996	-66	36	-3,2	1,8
Skilled agriculture	67	61	67	67	60	-7	-7	-10,4	-10,4
Craft and related trade	1 637	1 605	1 581	1 662	1 660	-2	23	-0,1	1,4
Plant and machine operator	1 126	1 106	1 111	1 150	1 139	-11	13	-1,0	1,2
Elementary	2 933	2 983	2 957	2 982	3 034	52	101	1,7	3,4
Domestic worker	878	896	913	876	861	-15	-17	-1,7	-1,9
Women	5 920	5 902	5 872	5 940	5 885	-55	-35	-0,9	-0,6
Manager	340	357	337	346	330	-16	-10	-4,6	-2,9
Professional	343	321	370	343	345	2	2	0,6	0,6
Technician	838	854	842	859	829	-30	-9	-3,5	-1,1
Clerk	1 066	987	987	970	1 015	45	-51	4,6	-4,8
Sales and services	886	912	895	969	909	-60	23	-6,2	2,6
Skilled agriculture	21	22	17	22	24	2	3	9,1	14,3
Craft and related trade	186	188	154	168	189	21	3	12,5	1,6
Plant and machine operator	165	143	148	155	147	-8	-18	-5,2	-10,9
Elementary	1 233	1 248	1 248	1 271	1 269	-2	36	-0,2	2,9
Domestic worker	843	871	874	837	828	-9	-15	-1,1	-1,8
Men	7 577	7 520	7 574	7 706	7 693	-13	116	-0,2	1,5
Manager	790	745	725	789	745	-44	-45	-5,6	-5,7
Professional	402	427	446	455	460	5	58	1,1	14,4
Technician	660	678	736	664	675	11	15	1,7	2,3
Clerk	457	433	419	420	428	8	-29	1,9	-6,3
Sales and services	1 075	1 057	1 061	1 092	1 086	-6	11	-0,5	1,0
Skilled agriculture	46	40	50	46	36	-10	-10	-21,7	-21,7
Craft and related trade	1 452	1 417	1 427	1 494	1 471	-23	19	-1,5	1,3
Plant and machine operator	960	963	962	995	992	-3	32	-0,3	3,3
Elementary	1 700	1 735	1 710	1 711	1 765	54	65	3,2	3,8
Domestic worker	35	25	39	39	33	-6	-2	-15,4	-5,7

For all values of 10 000 or lower the sample size is too small for reliable estimates.

Due to rounding, numbers do not necessarily add up to totals.

Table 3.6: Employed by sex and status in employment - South Africa

	Oct–Dec 2011	Jan–Mar 2012	Apr–Jun 2012	Jul–Sep 2012	Oct–Dec 2012	Qrt to Qrt change	Year on year change	Qrt to Qrt change	Year on year change
	Thousand	Thousand	Thousand	Thousand	Thousand	Thousand	Thousand	Percent	Percent
Both sexes	13 497	13 422	13 447	13 645	13 577	-68	80	-0,5	0,6
Employee	11 460	11 406	11 416	11 541	11 511	-30	51	-0,3	0,4
Employer	704	669	695	767	698	-69	-6	-9,0	-0,9
Own-account worker	1 230	1 247	1 243	1 236	1 285	49	55	4,0	4,5
Unpaid household member	103	100	93	101	84	-17	-19	-16,8	-18,4
Women	5 920	5 902	5 872	5 940	5 885	-55	-35	-0,9	-0,6
Employee	5 125	5 122	5 118	5 173	5 116	-57	-9	-1,1	-0,2
Employer	148	129	148	154	138	-16	-10	-10,4	-6,8
Own-account worker	580	582	543	544	577	33	-3	6,1	-0,5
Unpaid household member	68	70	64	69	53	-16	-15	-23,2	-22,1
Men	7 577	7 520	7 574	7 706	7 693	-13	116	-0,2	1,5
Employee	6 335	6 284	6 298	6 368	6 394	26	59	0,4	0,9
Employer	556	540	546	613	560	-53	4	-8,6	0,7
Own-account worker	650	666	701	692	708	16	58	2,3	8,9
Unpaid household member	36	30	29	33	30	-3	-6	-9,1	-16,7

For all values of 10 000 or lower the sample size is too small for reliable estimates.

Due to rounding, numbers do not necessarily add up to totals.

Table 3.7: Employed by sex and usual hours of work - South Africa

	Oct–Dec 2011	Jan–Mar 2012	Apr–Jun 2012	Jul–Sep 2012	Oct–Dec 2012	Qrt to Qrt change	Year on year change	Qrt to Qrt change	Year on year change
	Thousand	Thousand	Thousand	Thousand	Thousand	Thousand	Thousand	Percent	Percent
Both sexes	13 497	13 422	13 447	13 645	13 577	-68	80	-0,5	0,6
Working less than 15 hours per week	238	218	228	247	254	7	16	2,8	6,7
Working 15-29 hours per week	774	811	784	797	814	17	40	2,1	5,2
Working 30-39 hours per week	932	989	936	991	940	-51	8	-5,1	0,9
Working 40-45 hours per week	7 424	7 377	7 504	7 455	7 404	-51	-20	-0,7	-0,3
Working more than 45 hours per week	4 129	4 027	3 994	4 155	4 165	10	36	0,2	0,9
Women	5 920	5 902	5 872	5 940	5 885	-55	-35	-0,9	-0,6
Working less than 15 hours per week	143	142	146	160	177	17	34	10,6	23,8
Working 15-29 hours per week	501	529	521	528	536	8	35	1,5	7,0
Working 30-39 hours per week	576	598	600	602	600	-2	24	-0,3	4,2
Working 40-45 hours per week	3 264	3 202	3 275	3 197	3 131	-66	-133	-2,1	-4,1
Working more than 45 hours per week	1 436	1 432	1 330	1 453	1 440	-13	4	-0,9	0,3
Men	7 577	7 520	7 574	7 706	7 693	-13	116	-0,2	1,5
Working less than 15 hours per week	95	76	82	88	77	-11	-18	-12,5	-18,9
Working 15-29 hours per week	273	282	263	269	278	9	5	3,3	1,8
Working 30-39 hours per week	356	391	336	389	339	-50	-17	-12,9	-4,8
Working 40-45 hours per week	4 159	4 175	4 229	4 257	4 273	16	114	0,4	2,7
Working more than 45 hours per week	2 693	2 595	2 664	2 703	2 725	22	32	0,8	1,2

For all values of 10 000 or lower the sample size is too small for reliable estimates.
 Due to rounding, numbers do not necessarily add up to totals.

Table 3.8: Conditions of employment - South Africa

	Oct–Dec 2011	Jan–Mar 2012	Apr–Jun 2012	Jul–Sep 2012	Oct–Dec 2012	Qrt to Qrt change	Year on year change	Qrt to Qrt change	Year on year change
	Thousand	Thousand	Thousand	Thousand	Thousand	Thousand	Thousand	Percent	Percent
Pension/retirement fund contribution									
Both sexes	11 460	11 406	11 416	11 541	11 511	-30	51	-0,3	0,4
Yes	5 537	5 513	5 631	5 603	5 597	-6	60	-0,1	1,1
No	5 769	5 726	5 612	5 711	5 734	23	-35	0,4	-0,6
Don't know	154	167	172	227	180	-47	26	-20,7	16,9
Women	5 125	5 122	5 118	5 173	5 116	-57	-9	-1,1	-0,2
Yes	2 315	2 288	2 347	2 321	2 308	-13	-7	-0,6	-0,3
No	2 743	2 760	2 707	2 758	2 732	-26	-11	-0,9	-0,4
Don't know	66	75	64	94	77	-17	11	-18,1	16,7
Men	6 335	6 284	6 298	6 368	6 394	26	59	0,4	0,9
Yes	3 222	3 225	3 284	3 282	3 290	8	68	0,2	2,1
No	3 025	2 966	2 905	2 952	3 001	49	-24	1,7	-0,8
Don't know	88	93	109	133	103	-30	15	-22,6	17,0
Entitled to any paid leave									
Both sexes	11 460	11 406	11 416	11 541	11 511	-30	51	-0,3	0,4
Yes	7 631	7 613	7 568	6 968	7 141	173	-490	2,5	-6,4
No	3 712	3 680	3 723	4 401	4 230	-171	518	-3,9	14,0
Don't know	118	112	124	172	140	-32	22	-18,6	18,6
Women	5 125	5 122	5 118	5 173	5 116	-57	-9	-1,1	-0,2
Yes	3 343	3 314	3 284	3 035	3 086	51	-257	1,7	-7,7
No	1 741	1 752	1 791	2 076	1 971	-105	230	-5,1	13,2
Don't know	41	55	43	63	59	-4	18	-6,3	43,9
Men	6 335	6 284	6 298	6 368	6 394	26	59	0,4	0,9
Yes	4 288	4 299	4 284	3 934	4 055	121	-233	3,1	-5,4
No	1 971	1 928	1 933	2 325	2 259	-66	288	-2,8	14,6
Don't know	76	57	81	109	81	-28	5	-25,7	6,6

For all values of 10 000 or lower the sample size is too small for reliable estimates.
Due to rounding, numbers do not necessarily add up to totals.

Table 3.8: Conditions of employment - South Africa (continued)

	Oct-Dec 2011	Jan-Mar 2012	Apr-Jun 2012	Jul-Sep 2012	Oct-Dec 2012	Qrt to Qrt change	Year on year change	Qrt to Qrt change	Year on year change
	Thousand	Thousand	Thousand	Thousand	Thousand	Thousand	Thousand	Percent	Percent
Entitled to paid sick leave									
Both sexes	11 460	11 406	11 416	11 541	11 511	-30	51	-0,3	0,4
Yes	7 846	7 909	7 879	7 893	7 856	-37	10	-0,5	0,1
No	3 614	3 497	3 537	3 648	3 654	6	40	0,2	1,1
Women	5 125	5 122	5 118	5 173	5 116	-57	-9	-1,1	-0,2
Yes	3 471	3 487	3 449	3 438	3 395	-43	-76	-1,3	-2,2
No	1 654	1 635	1 669	1 735	1 721	-14	67	-0,8	4,1
Men	6 335	6 284	6 298	6 368	6 394	26	59	0,4	0,9
Yes	4 374	4 422	4 430	4 455	4 461	6	87	0,1	2,0
No	1 961	1 862	1 868	1 913	1 933	20	-28	1,0	-1,4
Entitled to maternity/paternity leave									
Both sexes	11 460	11 406	11 416	11 541	11 511	-30	51	-0,3	0,4
Yes	6 415	6 338	6 284	5 969	5 993	24	-422	0,4	-6,6
No	5 045	5 068	5 132	5 572	5 517	-55	472	-1,0	9,4
Women	5 125	5 122	5 118	5 173	5 116	-57	-9	-1,1	-0,2
Yes	2 961	2 910	2 898	2 792	2 759	-33	-202	-1,2	-6,8
No	2 163	2 211	2 220	2 381	2 357	-24	194	-1,0	9,0
Men	6 335	6 284	6 298	6 368	6 394	26	59	0,4	0,9
Yes	3 454	3 427	3 386	3 177	3 234	57	-220	1,8	-6,4
No	2 881	2 856	2 912	3 191	3 160	-31	279	-1,0	9,7

For all values of 10 000 or lower the sample size is too small for reliable estimates.

Due to rounding, numbers do not necessarily add up to totals.

Table 3.8: Conditions of employment - South Africa (continued)

	Oct-Dec 2011	Jan-Mar 2012	Apr-Jun 2012	Jul-Sep 2012	Oct-Dec 2012	Qrt to Qrt change	Year on year change	Qrt to Qrt change	Year on year change
	Thousand	Thousand	Thousand	Thousand	Thousand	Thousand	Thousand	Percent	Percent
UIF contribution									
Both sexes	11 460	11 406	11 416	11 541	11 511	-30	51	-0,3	0,4
Yes	6 563	6 541	6 463	7 159	7 059	-100	496	-1,4	7,6
No	4 748	4 738	4 819	4 183	4 277	94	-471	2,2	-9,9
Don't know	148	127	134	200	175	-25	27	-12,5	18,2
Women	5 125	5 122	5 118	5 173	5 116	-57	-9	-1,1	-0,2
Yes	2 688	2 684	2 640	2 957	2 953	-4	265	-0,1	9,9
No	2 363	2 378	2 434	2 132	2 081	-51	-282	-2,4	-11,9
Don't know	73	60	43	85	82	-3	9	-3,5	12,3
Men	6 335	6 284	6 298	6 368	6 394	26	59	0,4	0,9
Yes	3 875	3 857	3 823	4 202	4 106	-96	231	-2,3	6,0
No	2 385	2 360	2 385	2 051	2 196	145	-189	7,1	-7,9
Don't know	75	66	90	115	93	-22	18	-19,1	24,0
Medical aid benefits									
Both sexes	11 460	11 406	11 416	11 541	11 511	-30	51	-0,3	0,4
Yes	3 689	3 686	3 767	3 821	3 686	-135	-3	-3,5	-0,1
No	7 672	7 634	7 538	7 601	7 725	124	53	1,6	0,7
Don't know	99	86	110	119	100	-19	1	-16,0	1,0
Women	5 125	5 122	5 118	5 173	5 116	-57	-9	-1,1	-0,2
Yes	1 613	1 594	1 640	1 640	1 580	-60	-33	-3,7	-2,0
No	3 458	3 480	3 430	3 486	3 492	6	34	0,2	1,0
Don't know	54	48	47	47	45	-2	-9	-4,3	-16,7
Men	6 335	6 284	6 298	6 368	6 394	26	59	0,4	0,9
Yes	2 075	2 091	2 127	2 181	2 107	-74	32	-3,4	1,5
No	4 214	4 154	4 108	4 115	4 233	118	19	2,9	0,5
Don't know	46	39	63	72	55	-17	9	-23,6	19,6

For all values of 10 000 or lower the sample size is too small for reliable estimates.

Due to rounding, numbers do not necessarily add up to totals.

Table 3.8: Conditions of employment - South Africa (continued)

	Oct-Dec 2011	Jan-Mar 2012	Apr-Jun 2012	Jul-Sep 2012	Oct-Dec 2012	Qrt to Qrt change	Year on year change	Qrt to Qrt change	Year on year change
	Thousand	Thousand	Thousand	Thousand	Thousand	Thousand	Thousand	Percent	Percent
Income tax (PAYE/ SITE) deduction									
Both sexes	11 460	11 406	11 416	11 541	11 511	-30	51	-0,3	0,4
Yes	6 527	6 390	6 369	6 422	6 445	23	-82	0,4	-1,3
No	4 781	4 861	4 872	4 900	4 878	-22	97	-0,4	2,0
Don't know	152	154	175	219	188	-31	36	-14,2	23,7
Women	5 125	5 122	5 118	5 173	5 116	-57	-9	-1,1	-0,2
Yes	2 742	2 667	2 674	2 674	2 663	-11	-79	-0,4	-2,9
No	2 323	2 387	2 383	2 428	2 382	-46	59	-1,9	2,5
Don't know	60	68	60	71	71		11	0,0	18,3
Men	6 335	6 284	6 298	6 368	6 394	26	59	0,4	0,9
Yes	3 785	3 723	3 695	3 748	3 782	34	-3	0,9	-0,1
No	2 458	2 474	2 488	2 471	2 495	24	37	1,0	1,5
Don't know	93	87	115	149	117	-32	24	-21,5	25,8
Condition of employment									
Both sexes	11 460	11 406	11 416	11 541	11 511	-30	51	-0,3	0,4
Written contract	9 149	9 163	9 233	9 311	9 206	-105	57	-1,1	0,6
Verbal agreement	2 311	2 243	2 182	2 229	2 304	75	-7	3,4	-0,3
Women	5 125	5 122	5 118	5 173	5 116	-57	-9	-1,1	-0,2
Written contract	4 035	4 029	4 055	4 088	4 041	-47	6	-1,1	0,1
Verbal agreement	1 090	1 093	1 063	1 085	1 076	-9	-14	-0,8	-1,3
Men	6 335	6 284	6 298	6 368	6 394	26	59	0,4	0,9
Written contract	5 114	5 134	5 178	5 223	5 166	-57	52	-1,1	1,0
Verbal agreement	1 221	1 150	1 120	1 144	1 229	85	8	7,4	0,7

For all values of 10 000 or lower the sample size is too small for reliable estimates.

Due to rounding, numbers do not necessarily add up to totals.

Table 3.8: Conditions of employment - South Africa (continued)

	Oct-Dec 2011	Jan-Mar 2012	Apr-Jun 2012	Jul-Sep 2012	Oct-Dec 2012	Qrt to Qrt change	Year on year change	Qrt to Qrt change	Year on year change
	Thousand	Thousand	Thousand	Thousand	Thousand	Thousand	Thousand	Percent	Percent
Nature of contract/agreement									
Both sexes	11 460	11 406	11 416	11 541	11 511	-30	51	-0,3	0,4
Limited duration	1 495	1 477	1 571	1 622	1 574	-48	79	-3,0	5,3
Permanent nature	7 384	7 364	7 350	7 342	7 349	7	-35	0,1	-0,5
Unspecified duration	2 581	2 565	2 495	2 577	2 588	11	7	0,4	0,3
Women	5 125	5 122	5 118	5 173	5 116	-57	-9	-1,1	-0,2
Limited duration	685	680	712	762	735	-27	50	-3,5	7,3
Permanent nature	3 225	3 217	3 190	3 172	3 132	-40	-93	-1,3	-2,9
Unspecified duration	1 215	1 225	1 216	1 239	1 249	10	34	0,8	2,8
Men	6 335	6 284	6 298	6 368	6 394	26	59	0,4	0,9
Limited duration	810	797	859	860	839	-21	29	-2,4	3,6
Permanent nature	4 159	4 147	4 160	4 170	4 217	47	58	1,1	1,4
Unspecified duration	1 366	1 340	1 279	1 338	1 339	1	-27	0,1	-2,0
Trade union membership									
Both sexes	11 460	11 406	11 416	11 541	11 511	-30	51	-0,3	0,4
Yes	3 363	3 327	3 406	3 367	3 417	50	54	1,5	1,6
No	7 876	7 842	7 768	7 858	7 836	-22	-40	-0,3	-0,5
Don't know	221	237	241	315	258	-57	37	-18,1	16,7
Women	5 125	5 122	5 118	5 173	5 116	-57	-9	-1,1	-0,2
Yes	1 368	1 344	1 374	1 354	1 399	45	31	3,3	2,3
No	3 665	3 680	3 647	3 700	3 614	-86	-51	-2,3	-1,4
Don't know	92	98	96	119	103	-16	11	-13,4	12,0
Men	6 335	6 284	6 298	6 368	6 394	26	59	0,4	0,9
Yes	1 995	1 984	2 032	2 013	2 018	5	23	0,2	1,2
No	4 212	4 161	4 121	4 158	4 222	64	10	1,5	0,2
Don't know	128	139	145	196	155	-41	27	-20,9	21,1

For all values of 10 000 or lower the sample size is too small for reliable estimates.

Due to rounding, numbers do not necessarily add up to totals.

Table 3.8: Conditions of employment - South Africa (concluded)

	Oct-Dec 2011	Jan-Mar 2012	Apr-Jun 2012	Jul-Sep 2012	Oct-Dec 2012	Qrt to Qrt change	Year on year change	Qrt to Qrt change	Year on year change
	Thousand	Thousand	Thousand	Thousand	Thousand	Thousand	Thousand	Percent	Percent
How annual salary increment is negotiated									
Both sexes	11 460	11 406	11 416	11 541	11 511	-30	51	-0,3	0,4
Individual and employer	1 442	1 404	1 337	1 425	1 349	-76	-93	-5,3	-6,4
Union and employer	2 551	2 660	2 738	2 574	2 620	46	69	1,8	2,7
Bargaining council	1 031	1 054	1 079	1 121	1 067	-54	36	-4,8	3,5
Employer only	5 779	5 647	5 586	5 777	5 855	78	76	1,4	1,3
No regular increment	593	565	619	584	567	-17	-26	-2,9	-4,4
Other	65	75	56	60	53	-7	-12	-11,7	-18,5
Women	5 125	5 122	5 118	5 173	5 116	-57	-9	-1,1	-0,2
Individual and employer	634	592	590	619	569	-50	-65	-8,1	-10,3
Union and employer	989	1 032	1 065	967	1 012	45	23	4,7	2,3
Bargaining council	506	503	507	561	500	-61	-6	-10,9	-1,2
Employer only	2 671	2 679	2 643	2 719	2 757	38	86	1,4	3,2
No regular increment	296	284	293	285	258	-27	-38	-9,5	-12,8
Other	28	33	20	21	20	-1	-8	-4,8	-28,6
Men	6 335	6 284	6 298	6 368	6 394	26	59	0,4	0,9
Individual and employer	807	812	748	806	780	-26	-27	-3,2	-3,3
Union and employer	1 561	1 629	1 673	1 606	1 608	2	47	0,1	3,0
Bargaining council	525	552	572	560	567	7	42	1,3	8,0
Employer only	3 108	2 968	2 943	3 057	3 097	40	-11	1,3	-0,4
No regular increment	297	281	327	300	309	9	12	3,0	4,0
Other	37	42	36	39	33	-6	-4	-15,4	-10,8

For all values of 10 000 or lower the sample size is too small for reliable estimates.

Due to rounding, numbers do not necessarily add up to totals.

Table 3.9: Time-related underemployment - South Africa

	Oct-Dec 2011	Jan-Mar 2012	Apr-Jun 2012	Jul-Sep 2012	Oct-Dec 2012	Qrt to Qrt change	Year on year change	Qrt to Qrt change	Year on year change
	Thousand	Thousand	Thousand	Thousand	Thousand	Thousand	Thousand	Percent	Percent
Both sexes	521	544	531	549	566	17	45	3,1	8,6
Women	306	313	327	337	345	8	39	2,4	12,7
Men	215	231	204	212	220	8	5	3,8	2,3
As percentage of the labour force (Both sexes)	2,9	3,0	3,0	3,0	3,1	0,1	0,2		
Women	3,8	3,8	4,0	4,1	4,2	0,1	0,4		
Men	2,2	2,4	2,1	2,1	2,2	0,1	0,0		
As percentage of total employment (Both sexes)	3,9	4,1	3,9	4,0	4,2	0,2	0,3		
Women	5,2	5,3	5,6	5,7	5,9	0,2	0,7		
Men	2,8	3,1	2,7	2,8	2,9	0,1	0,1		
Industry	521	544	531	549	566	17	45	3,1	8,6
Agriculture	11	14	7	11	15	4	4	36,4	36,4
Mining	1	0	0		0		-1		-100,0
Manufacturing	50	32	29	32	28	-4	-22	-12,5	-44,0
Utilities	.	0
Construction	48	57	53	75	77	2	29	2,7	60,4
Trade	98	126	99	93	95	2	-3	2,2	-3,1
Transport	10	19	14	16	10	-6	0	-37,5	0,0
Finance	35	33	38	37	39	2	4	5,4	11,4
Community and social services	77	68	91	91	92	1	15	1,1	19,5
Private households	191	196	200	193	210	17	19	8,8	9,9
Occupation	521	544	531	549	566	17	45	3,1	8,6
Manager	7	6	7	11	11	0	4	0,0	57,1
Professional	6	6	6	7	6	-1	0	-14,3	0,0
Technician	29	24	32	29	40	11	11	37,9	37,9
Clerk	14	16	14	18	14	-4	0	-22,2	0,0
Sales and services	48	55	56	58	63	5	15	8,6	31,3
Skilled agriculture	4	5	2	3	5	2	1	66,7	25,0
Craft and related trade	72	75	63	71	57	-14	-15	-19,7	-20,8
Plant and machine operator	14	15	16	15	9	-6	-5	-40,0	-35,7
Elementary	190	200	185	185	197	12	7	6,5	3,7
Domestic worker	138	142	151	152	163	11	25	7,2	18,1

For all values of 10 000 or lower the sample size is too small for reliable estimates.

Due to rounding, numbers do not necessarily add up to totals.

Table 4: Characteristics of the unemployed - South Africa

	Oct-Dec 2011	Jan-Mar 2012	Apr-Jun 2012	Jul-Sep 2012	Oct-Dec 2012	Qrt to Qrt change	Year on year change	Qrt to Qrt change	Year on year change
	Thousand	Thousand	Thousand	Thousand	Thousand	Thousand	Thousand	Percent	Percent
Unemployed	4 244	4 526	4 470	4 667	4 501	-166	257	-3,6	6,1
Job losers	1 288	1 400	1 458	1 417	1 338	-79	50	-5,6	3,9
Job leavers	260	275	232	284	280	-4	20	-1,4	7,7
New entrants	1 850	1 993	1 924	2 075	1 974	-101	124	-4,9	6,7
Re-entrants	236	164	161	178	195	17	-41	9,6	-17,4
Other	610	694	694	714	713	-1	103	-0,1	16,9
Unemployed	4 244	4 526	4 470	4 667	4 501	-166	257	-3,6	6,1
Long-term unemployment (1 year and more)	2 866	3 069	3 032	3 132	3 059	-73	193	-2,3	6,7
Short-term unemployment (less than 1 year)	1 378	1 457	1 437	1 535	1 442	-93	64	-6,1	4,6
Long-term unemployment (%)									
Proportion of the labour force	16,2	17,1	16,9	17,1	16,9	-0,2	0,7		
Proportion of the unemployed	67,5	67,8	67,8	67,1	68,0	0,9	0,5		
Those who have worked in the past 5 years									
Previous occupation	1 784	1 839	1 851	1 879	1 814	-65	30	-3,5	1,7
Manager	45	53	31	40	45	5	0	12,5	0,0
Professional	39	39	45	33	42	9	3	27,3	7,7
Technician	94	100	96	95	94	-1	0	-1,1	0,0
Clerk	218	235	240	248	229	-19	11	-7,7	5,0
Sales and services	262	270	291	291	276	-15	14	-5,2	5,3
Skilled agriculture	6	7	9	4	3	-1	-3	-25,0	-50,0
Craft and related trade	293	328	315	308	296	-12	3	-3,9	1,0
Plant and machine operator	154	147	144	159	134	-25	-20	-15,7	-13,0
Elementary	512	525	527	542	545	3	33	0,6	6,4
Domestic worker	161	137	153	157	151	-6	-10	-3,8	-6,2
Other				3	1	-2		-66,7	

For all values of 10 000 or lower the sample size is too small for reliable estimates.

Due to rounding, numbers do not necessarily add up to totals.

Table 4: Characteristics of the unemployed - South Africa (concluded)

	Oct-Dec 2011	Jan-Mar 2012	Apr-Jun 2012	Jul-Sep 2012	Oct-Dec 2012	Qrt to Qrt change	Year on year change	Qrt to Qrt change	Year on year change
	Thousand	Thousand	Thousand	Thousand	Thousand	Thousand	Thousand	Percent	Percent
Previous industry	1 784	1 839	1 851	1 879	1 814	-65	30	-3,5	1,7
Agriculture	80	70	86	85	93	8	13	9,4	16,3
Mining	24	21	35	35	24	-11	0	-31,4	0,0
Manufacturing	251	266	258	256	211	-45	-40	-17,6	-15,9
Utilities	12	9	5	6	11	5	-1	83,3	-8,3
Construction	256	298	297	269	310	41	54	15,2	21,1
Trade	440	429	432	450	436	-14	-4	-3,1	-0,9
Transport	94	91	85	96	88	-8	-6	-8,3	-6,4
Finance	223	228	233	265	236	-29	13	-10,9	5,8
Community and social services	204	231	221	206	211	5	7	2,4	3,4
Private households	199	197	199	208	193	-15	-6	-7,2	-3,0
Other	1	.	.	3	1	-2	0	-66,7	0

For all values of 10 000 or lower the sample size is too small for reliable estimates.

Due to rounding, numbers do not necessarily add up to totals.

Table 5: Characteristics of the not economically active - South Africa

	Oct–Dec 2011	Jan–Mar 2012	Apr–Jun 2012	Jul–Sep 2012	Oct–Dec 2012	Qrt to Qrt change	Year on year change	Qrt to Qrt change	Year on year change
	Thousand	Thousand	Thousand	Thousand	Thousand	Thousand	Thousand	Percent	Percent
Not economically active	14 929	14 838	14 987	14 705	15 050	345	121	2,3	0,8
Student	6 235	6 161	6 391	6 225	6 292	67	57	1,1	0,9
Home-maker	2 836	2 784	2 726	2 741	2 837	96	1	3,5	0,0
Illness/disability	1 585	1 608	1 637	1 673	1 654	-19	69	-1,1	4,4
Too old/young to work	1 215	1 213	1 263	1 198	1 216	18	1	1,5	0,1
Discouraged work seekers	2 315	2 335	2 311	2 170	2 257	87	-58	4,0	-2,5
Other	743	738	658	698	795	97	52	13,9	7,0
Inactivity rate by age (Both sexes)	45,7	45,3	45,5	44,5	45,4	0,9	-0,3		
15-24 yrs	75,1	73,9	75,8	74,3	75,3	1,0	0,2		
25-54 yrs	27,8	27,7	27,1	26,4	27,4	1,0	-0,4		
55-64 yrs	58,6	59,3	60,0	58,8	59,0	0,2	0,4		
Inactivity rate by age (Women)	52,1	51,5	52,1	51,2	52,0	0,8	-0,1		
15-24 yrs	77,3	76,4	78,2	76,5	77,4	0,9	0,1		
25-54 yrs	36,6	36,1	36,1	35,3	36,2	0,9	-0,4		
55-64 yrs	66,8	67,3	67,6	68,8	68,1	-0,7	1,3		
Inactivity rate by age (Men)	38,9	38,6	38,7	37,5	38,5	1,0	-0,4		
15-24 yrs	73,0	71,5	73,5	72,2	73,2	1,0	0,2		
25-54 yrs	18,3	18,6	17,4	16,9	18,0	1,1	-0,3		
55-64 yrs	48,7	49,6	50,9	46,9	48,1	1,2	-0,6		

Due to rounding, numbers do not necessarily add up to totals.

Table 6: Socio-demographic characteristics - South Africa

	Oct-Dec 2011	Jan-Mar 2012	Apr-Jun 2012	Jul-Sep 2012	Oct-Dec 2012	Qrt to Qrt change	Year on year change	Qrt to Qrt change	Year on year change
	Thousand	Thousand	Thousand	Thousand	Thousand	Thousand	Thousand	Percent	Percent
Age group of the employed	13 497	13 422	13 447	13 645	13 577	-68	80	-0,5	0,6
15-24 yrs	1 306	1 305	1 217	1 278	1 260	-18	-46	-1,4	-3,5
25-34 yrs	4 522	4 491	4 519	4 572	4 498	-74	-24	-1,6	-0,5
35-44 yrs	3 921	3 899	3 993	4 033	4 071	38	150	0,9	3,8
45-54 yrs	2 553	2 551	2 551	2 555	2 555	0	2	0,0	0,1
55-64 yrs	1 196	1 175	1 167	1 206	1 193	-13	-3	-1,1	-0,3
Age group of the unemployed	4 244	4 526	4 470	4 667	4 501	-166	257	-3,6	6,1
15-24 yrs	1 267	1 393	1 291	1 386	1 308	-78	41	-5,6	3,2
25-34 yrs	1 737	1 819	1 870	1 921	1 893	-28	156	-1,5	9,0
35-44 yrs	813	862	864	908	851	-57	38	-6,3	4,7
45-54 yrs	349	366	364	368	348	-20	-1	-5,4	-0,3
55-64 yrs	79	86	80	85	100	15	21	17,6	26,6
Age group of the not economically active	14 929	14 838	14 987	14 705	15 050	345	121	2,3	0,8
15-24 yrs	7 770	7 658	7 863	7 720	7 827	107	57	1,4	0,7
25-34 yrs	2 481	2 465	2 421	2 352	2 488	136	7	5,8	0,3
35-44 yrs	1 508	1 528	1 477	1 439	1 503	64	-5	4,4	-0,3
45-54 yrs	1 368	1 354	1 358	1 352	1 375	23	7	1,7	0,5
55-64 yrs	1 802	1 834	1 867	1 841	1 857	16	55	0,9	3,1
Highest level of education of the employed	13 497	13 422	13 447	13 645	13 577	-68	80	-0,5	0,6
No schooling	350	373	347	328	338	10	-12	3,0	-3,4
Less than primary completed	1 090	1 073	1 033	1 039	1 029	-10	-61	-1,0	-5,6
Primary completed	590	601	594	598	587	-11	-3	-1,8	-0,5
Secondary not completed	4 523	4 469	4 426	4 738	4 621	-117	98	-2,5	2,2
Secondary completed	4 032	4 086	4 199	4 204	4 255	51	223	1,2	5,5
Tertiary	2 732	2 670	2 670	2 622	2 620	-2	-112	-0,1	-4,1
Other	179	151	178	115	127	12	-52	10,4	-29,1

Due to rounding, numbers do not necessarily add up to totals.

Table 6: Socio-demographic characteristics - South Africa (continued)

	Oct–Dec 2011	Jan–Mar 2012	Apr–Jun 2012	Jul–Sep 2012	Oct–Dec 2012	Qrt to Qrt change	Year on year change	Qrt to Qrt change	Year on year change
	Thousand	Thousand	Thousand	Thousand	Thousand	Thousand	Thousand	Percent	Percent
Highest level of education of the unemployed	4 244	4 526	4 470	4 667	4 501	-166	257	-3,6	6,1
No schooling	67	80	66	73	66	-7	-1	-9,6	-1,5
Less than primary completed	287	305	294	319	319		32	0,0	11,1
Primary completed	205	193	196	208	201	-7	-4	-3,4	-2,0
Secondary not completed	2 014	2 119	2 096	2 246	2 171	-75	157	-3,3	7,8
Secondary completed	1 371	1 520	1 498	1 531	1 447	-84	76	-5,5	5,5
Tertiary	266	280	280	276	280	4	14	1,4	5,3
Other	33	29	40	15	17	2	-16	13,3	-48,5
Highest level of education of the not economically active	14 929	14 838	14 987	14 705	15 050	345	121	2,3	0,8
No schooling	773	797	769	763	796	33	23	4,3	3,0
Less than primary completed	1 899	1 787	1 814	1 779	1 806	27	-93	1,5	-4,9
Primary completed	1 174	1 017	1 093	1 076	1 073	-3	-101	-0,3	-8,6
Secondary not completed	8 019	7 839	7 999	7 967	8 249	282	230	3,5	2,9
Secondary completed	2 532	2 847	2 754	2 622	2 584	-38	52	-1,4	2,1
Tertiary	416	425	426	415	446	31	30	7,5	7,2
Other	116	126	131	82	97	15	-19	18,3	-16,4
Employed	-	-	-	13 645	13 577	-68	-	-0,5	-
Attending educational institution	-	-	-	351	306	-45	-	-12,8	-
Not attending educational institution	-	-	-	13 294	13 271	-23	-	-0,2	-
Unemployed	-	-	-	4 667	4 501	-166	-	-3,6	-
Attending educational institution	-	-	-	103	91	-12	-	-11,7	-
Not attending educational institution	-	-	-	4 564	4 409	-155	-	-3,4	-
Not economically active	-	-	-	14 705	15 050	345	-	2,3	-
Attending educational institution	-	-	-	6 057	6 053	-4	-	-0,1	-
Not attending educational institution	-	-	-	8 648	8 997	349	-	4	-

Due to rounding, numbers do not necessarily add up to totals.

Table 6: Socio-demographic characteristics - South Africa (continued)

	Oct–Dec 2011	Jan–Mar 2012	Apr–Jun 2012	Jul–Sep 2012	Oct–Dec 2012	Qrt to Qrt change	Year on year change	Qrt to Qrt change	Year on year change
	Thousand	Thousand	Thousand	Thousand	Thousand	Thousand	Thousand	Percent	Percent
Employed and attending by type of educational institution	-	-	-	351	306	-45	-	-12,8	-
Ordinary school	-	-	-	28	25	-3	-	-10,7	-
Special school	-	-	-	1	-	-	-	-	-
Further education and training college (FET)	-	-	-	36	33	-3	-	-8,3	-
Other college	-	-	-	34	23	-11	-	-32,4	-
Higher education institution	-	-	-	242	209	-33	-	-13,6	-
Adult basic education and training centre(ABET CENTRE)	-	-	-	5	13	8	-	160	-
Literacy classes (e.g KHA RI GUDE, SANLI)	-	-	-	2	-	-	-	-	-
Home based education or home schooling	-	-	-	1	1	0	-	0	-
Unemployed and attending by type of educational institution	-	-	-	103	91	-12	-	-11,7	-
Ordinary school	-	-	-	47	31	-16	-	-34	-
Special school	-	-	-	1	1	0	-	0	-
Further education and training college (FET)	-	-	-	13	21	8	-	61,5	-
Other college	-	-	-	10	8	-2	-	-20	-
Higher education institution	-	-	-	19	25	6	-	31,6	-
Adult basic education and training centre(ABET CENTRE)	-	-	-	10	6	-4	-	-40	-
Literacy classes (e.g KHA RI GUDE, SANLI)	-	-	-	-	-	-	-	-	-
Home based education or home schooling	-	-	-	-	-	-	-	-	-
Not economically active and attending by type of educational institution	-	-	-	6 057	6053	-4	-	-0,1	-
Ordinary school	-	-	-	4 962	5066	104	-	2,1	-
Special school	-	-	-	42	39	-3	-	-7,1	-
Further education and training college (FET)	-	-	-	294	266	-28	-	-9,5	-
Other college	-	-	-	116	107	-9	-	-7,8	-
Higher education institution	-	-	-	560	506	-54	-	-9,6	-
Adult basic education and training centre(ABET CENTRE)	-	-	-	35	30	-5	-	-14,3	-
Literacy classes (e.g KHA RI GUDE, SANLI)	-	-	-	4	4	0	-	0	-
Home based education or home schooling	-	-	-	6	1	-5	-	-83,3	-

For all values of 10 000 or lower the sample size is too small for reliable estimates.
Due to rounding, numbers do not necessarily add up to totals.

Table 6: Socio-demographic characteristics - South Africa (concluded)

	Oct–Dec 2011	Jan–Mar 2012	Apr–Jun 2012	Jul–Sep 2012	Oct–Dec 2012	Qrt to Qrt change	Year on year change	Qrt to Qrt change	Year on year change
	Thousand	Thousand	Thousand	Thousand	Thousand	Thousand	Thousand	Percent	Percent
Current marital status of the employed	13 497	13 422	13 447	13 645	13 577	-68	80	-0,5	0,6
Married	5 639	5 641	5 720	5 771	5 639	-132	0	-2,3	0
Living together like husband and wife	1 498	1 468	1 515	1 521	1 581	60	83	3,9	5,5
Widow/widower	428	430	405	424	398	-26	-30	-6,1	-7,0
Divorced or separated	469	476	477	488	476	-12	7	-2,5	1,5
Never married	5 463	5 407	5 330	5 441	5 483	42	20	0,8	0,4
Current marital status of the unemployed	4 244	4 526	4 470	4 667	4 501	-166	257	-3,6	6,1
Married	719	753	727	768	737	-31	18	-4,0	2,5
Living together like husband and wife	418	465	471	466	490	24	72	5,2	17,2
Widow/widower	63	58	55	58	62	4	-1	6,9	-1,6
Divorced or separated	79	80	75	77	84	7	5	9,1	6,3
Never married	2 964	3 169	3 142	3 298	3 128	-170	164	-5,2	5,5
Current marital status of the not economically active	14 929	14 838	14 987	14 705	15 050	345	121	2,3	0,8
Married	2 913	2 957	2 934	2 948	2 974	26	61	0,9	2,1
Living together like husband and wife	731	712	714	674	724	50	-7	7,4	-1,0
Widow/widower	659	641	640	640	638	-2	-21	-0,3	-3,2
Divorced or separated	246	253	242	230	222	-8	-24	-3,5	-9,8
Never married	10 380	10 276	10 456	10 214	10 492	278	112	2,7	1,1

Due to rounding, numbers do not necessarily add up to totals.

Table 7: Profile of those not in education and not in employment - South Africa

	Oct–Dec 2011	Jan–Mar 2012	Apr–Jun 2012	Jul–Sep 2012	Oct–Dec 2012	Qrt to Qrt change	Year on year change	Qrt to Qrt change	Year on year change
	Thousand	Thousand	Thousand	Thousand	Thousand	Thousand	Thousand	Percent	Percent
Both sexes	-	-	-	13 213	13 406	193	-	1,5	-
Women	-	-	-	7 996	8 088	92	-	1,2	-
Men	-	-	-	5 216	5 318	102	-	2	-
	-	-	-				-		-
Age group	-	-	-	13 213	13 406	193	-	1,5	-
15-24 yrs	-	-	-	3 262	3 288	26	-	0,8	-
25-34 yrs	-	-	-	4 011	4 130	119	-	3	-
35-44 yrs	-	-	-	2 310	2 318	8	-	0,3	-
45-54 yrs	-	-	-	1 710	1 719	9	-	0,5	-
55-64 yrs	-	-	-	1 920	1 951	31	-	1,6	-
Population groups	-	-	-	13 213	13 406	193	-	1,5	-
Black/African	-	-	-	10 963	11 125	162	-	1,5	-
Coloured	-	-	-	1 202	1 197	-5	-	-0,4	-
Indian/Asian	-	-	-	337	344	7	-	2,1	-
White	-	-	-	710	740	30	-	4,2	-
South Africa	-	-	-	13 213	13 406	193	-	1,5	-
Western Cape	-	-	-	1 274	1 255	-19	-	-1,5	-
Eastern Cape	-	-	-	1 904	1 998	94	-	4,9	-
Northern Cape	-	-	-	319	315	-4	-	-1,3	-
Free State	-	-	-	808	821	13	-	1,6	-
KwaZulu-Natal	-	-	-	2 889	2 960	71	-	2,5	-
North West	-	-	-	944	965	21	-	2,2	-
Gauteng	-	-	-	2 671	2 718	47	-	1,8	-
Mpumalanga	-	-	-	990	976	-14	-	-1,4	-
Limpopo	-	-	-	1 415	1 398	-17	-	-1,2	-

Table 8: Involvement in non-market activities and labour market status by province									
	Oct–Dec 2011	Jan–Mar 2012	Apr–Jun 2012	Jul–Sep 2012	Oct–Dec 2012	Qrt to Qrt change	Year on year change	Qrt to Qrt change	Year on year change
	Thousand	Thousand	Thousand	Thousand	Thousand	Thousand	Thousand	Percent	Percent
South Africa									
Subsistence farming	1 796	2 077	1 526	1 517	1 792	275	-4	18,1	-0,2
Fetching water or collecting wood/dung	4 144	4 292	4 046	4 383	3 949	-434	-195	-9,9	-4,7
Produce other goods for household use	161	189	96	99	80	-19	-81	-19,2	-50,3
Construction or major repairs to own home'	330	321	341	214	209	-5	-121	-2,3	-36,7
Hunting or fishing for household use	42	46	33	30	38	8	-4	26,7	-9,5
Involvement in at least one activity	5 152	5 540	4 903	5 271	5 102	-169	-50	-3,2	-1,0
Employed	1 146	1 211	1 005	1 137	1 144	7	-2	0,6	-0,2
Unemployed	596	675	615	770	646	-124	50	-16,1	8,4
Not economically active	3 411	3 654	3 283	3 364	3 312	-52	-99	-1,5	-2,9
Western Cape									
Subsistence farming	20	30	12	18	12	-6	-8	-33,3	-40,0
Fetching water or collecting wood/dung	36	41	31	29	29	0	-7	0,0	-19,4
Produce other goods for household use	4	1	.	2	1	-1	-3	-50,0	-75,0
Construction or major repairs to own home'	9	6	2	3	4	1	-5	33,3	-55,6
Hunting or fishing for household use	3	1	8	3	1	-2	-2	-66,7	-66,7
Involvement in at least one activity	56	74	51	53	46	-7	-10	-13,2	-17,9
Employed	32	38	25	28	18	-10	-14	-35,7	-43,8
Unemployed	8	16	12	10	9	-1	1	-10,0	12,5
Not economically active	16	20	15	16	20	4	4	25,0	25,0
Eastern Cape									
Subsistence farming	521	523	466	392	415	23	-106	5,9	-20,3
Fetching water or collecting wood/dung	1 003	1 024	1 034	1 071	1 001	-70	-2	-6,5	-0,2
Produce other goods for household use	18	22	11	6	4	-2	-14	-33,3	-77,8
Construction or major repairs to own or household'	118	104	166	73	30	-43	-88	-58,9	-74,6
Hunting or fishing for household use	5	6	1	.	1	.	-4	.	-80,0
Involvement in at least one activity	1 242	1 348	1 326	1 317	1 325	8	83	0,6	6,7
Employed	201	254	256	259	268	9	67	3,5	33,3
Unemployed	109	103	123	145	158	13	49	9,0	45,0
Not economically active	933	990	947	912	899	-13	-34	-1,4	-3,6

For all values of 10 000 or lower the sample size is too small for reliable estimates.

Due to rounding, numbers do not necessarily add up to totals.

Table 8: Involvement in non-market activities and labour market status by province (continued)

	Oct–Dec 2011	Jan–Mar 2012	Apr–Jun 2012	Jul–Sep 2012	Oct–Dec 2012	Qrt to Qrt change	Year on year change	Qrt to Qrt change	Year on year change
	Thousand	Thousand	Thousand	Thousand	Thousand	Thousand	Thousand	Percent	Percent
Northern Cape									
Subsistence farming	5	7	8	8	12	4	7	50,0	140,0
Fetching water or collecting wood/dung	66	85	97	113	82	-31	16	-27,4	24,2
Produce other goods for household use	0	1	.	1		-1	0	-100,0	.
Construction or major repairs to own home ¹	1	1	.	1	1	0	0	0,0	0,0
Hunting or fishing for household use	1	4	1	8	7	-1	6	-12,5	600,0
Involvement in at least one activity	69	91	100	119	93	-26	24	-21,8	34,8
Employed	12	16	17	32	25	-7	13	-21,9	108,3
Unemployed	14	15	26	28	18	-10	4	-35,7	28,6
Not economically active	44	60	57	58	50	-8	6	-13,8	13,6
Free State									
Subsistence farming	84	118	60	75	115	40	31	53,3	36,9
Fetching water or collecting wood/dung	21	40	30	38	48	10	27	26,3	128,6
Produce other goods for household use	3	4	1	3	2	-1	-1	-33,3	-33,3
Construction or major repairs to own home ¹	10	7	3	6	4	-2	-6	-33,3	-60,0
Hunting or fishing for household use	8	14	8	6	12	6	4	100,0	50,0
Involvement in at least one activity	106	162	89	114	157	43	51	37,7	48,1
Employed	48	58	31	39	54	15	6	38,5	12,5
Unemployed	13	34	19	20	27	7	14	35,0	107,7
Not economically active	45	70	39	54	76	22	31	40,7	68,9
KwaZulu-Natal									
Subsistence farming	742	853	640	626	647	21	-95	3,4	-12,8
Fetching water or collecting wood/dung	1 269	1 350	1 271	1 363	1 202	-161	-67	-11,8	-5,3
Produce other goods for household use	47	66	41	41	45	4	-2	9,8	-4,3
Construction or major repairs to own home ¹	133	132	107	85	113	28	-20	32,9	-15,0
Hunting or fishing for household use	11	10	9	5	6	1	-5	20,0	-45,5
Involvement in at least one activity	1 605	1 754	1 545	1 638	1 524	-114	-81	-7,0	-5,0
Employed	390	398	343	348	337	-11	-53	-3,2	-13,6
Unemployed	209	236	193	262	194	-68	-15	-26,0	-7,2
Not economically active	1 005	1 121	1 009	1 028	993	-35	-12	-3,4	-1,2

For all values of 10 000 or lower the sample size is too small for reliable estimates.

Due to rounding, numbers do not necessarily add up to totals.

Table 8: Involvement in non-market activities and labour market status by province (continued)

	Oct-Dec 2011	Jan-Mar 2012	Apr-Jun 2012	Jul-Sep 2012	Oct-Dec 2012	Qrt to Qrt change	Year on year change	Qrt to Qrt change	Year on year change
	Thousand	Thousand	Thousand	Thousand	Thousand	Thousand	Thousand	Percent	Percent
North West									
Subsistence farming	75	76	78	100	83	-17	8	-17,0	10,7
Fetching water or collecting wood/dung	232	211	216	299	231	-68	-1	-22,7	-0,4
Produce other goods for household use	1	1		3
Construction or major repairs to own home'	1	1	.	1	1	0	0	0,0	0,0
Hunting or fishing for household use	0	0	0	.	1	.	1	.	.
Involvement in at least one activity	274	253	253	350	267	-83	-7	-23,7	-2,6
Employed	39	40	45	77	56	-21	17	-27,3	43,6
Unemployed	41	46	41	63	35	-28	-6	-44,4	-14,6
Not economically active	193	166	167	211	175	-36	-18	-17,1	-9,3
Gauteng									
Subsistence farming	34	10	7	16	41	25	7	156,3	20,6
Fetching water or collecting wood/dung	41	69	22	65	34	-31	-7	-47,7	-17,1
Produce other goods for household use	60	63	3	12	6	-6	-54	-50,0	-90,0
Construction or major repairs to own home'	12	16	12	12	11	-1	-1	-8,3	-8,3
Hunting or fishing for household use	3	.	1	2	2	0	-1	0,0	-33,3
Involvement in at least one activity	136	151	38	94	86	-8	-50	-8,5	-36,8
Employed	93	83	17	45	42	-3	-51	-6,7	-54,8
Unemployed	17	20	11	27	18	-9	1	-33,3	5,9
Not economically active	26	47	9	21	25	4	-1	19,0	-3,8
Mpumalanga									
Subsistence farming	135	158	108	127	192	65	57	51,2	42,2
Fetching water or collecting wood/dung	257	305	293	316	276	-40	19	-12,7	7,4
Produce other goods for household use	24	30	38	31	20	-11	-4	-35,5	-16,7
Construction or major repairs to own home'	14	16	19	19	24	5	10	26,3	71,4
Hunting or fishing for household use	1	1	.	1	2	1	1	100,0	100,0
Involvement in at least one activity	358	409	380	419	411	-8	53	-1,9	14,8
Employed	74	93	76	82	92	10	18	12,2	24,3
Unemployed	88	97	93	110	103	-7	15	-6,4	17,0
Not economically active	195	219	211	226	215	-11	20	-4,9	10,3

For all values of 10 000 or lower the sample size is too small for reliable estimates.
Due to rounding, numbers do not necessarily add up to totals.

Table 8: Involvement in non-market activities and labour market status by province (concluded)

	Oct-Dec 2011	Jan-Mar 2012	Apr-Jun 2012	Jul-Sep 2012	Oct-Dec 2012	Qrt to Qrt change	Year on year change	Qrt to Qrt change	Year on year change
	Thousand	Thousand	Thousand	Thousand	Thousand	Thousand	Thousand	Percent	Percent
Limpopo									
Subsistence farming	180	302	146	155	274	119	94	76,8	52,2
Fetching water or collecting wood/dung	1 218	1 165	1 053	1 089	1 046	-43	-172	-3,9	-14,1
Produce other goods for household use	4	2	1	1	2	1	-2	100,0	-50,0
Construction or major repairs to own home'	32	37	31	14	21	7	-11	50,0	-34,4
Hunting or fishing for household use	9	11	5	5	5	0	-4	0,0	-44,4
Involvement in at least one activity	1 306	1 298	1 121	1 167	1 194	27	-112	2,3	-8,6
Employed	257	230	195	226	254	28	-3	12,4	-1,2
Unemployed	97	108	98	103	83	-20	-14	-19,4	-14,4
Not economically active	952	960	828	838	858	20	-94	2,4	-9,9

For all values of 10 000 or lower the sample size is too small for reliable estimates.

Due to rounding, numbers do not necessarily add up to totals.

Appendix 2A: Sampling variability for labour force characteristics by sex						
	Jul-Sep 2012 CV	Oct-Dec 2012 CV	Estimate	Lower 95%	Upper 95%	P-value
Both sexes						
Population 15–64 yrs						
Labour Force	0,5	0,6	-235	-413	-56	0,01
Employed	0,7	0,7	-68	-222	86	0,39
Formal sector (Non-agricultural)	1,0	1,0	-52	-218	114	0,54
Informal sector (Non-agricultural)	2,3	2,3	8	-91	107	0,87
Agriculture	5,8	6,0	24	-29	78	0,37
Private households	3,2	3,5	-48	-113	15	0,13
Unemployed	1,8	2,0	-166	-328	-6	0,04
Not economically active	0,6	0,7	345	167	524	0,00
Discouraged work-seekers	3,1	3,0	87	-34	208	0,16
Other(not economically active)	0,7	0,7	259	78	439	0,01
Rates (%)						
Unemployment rate	1,6	1,8	-0,6	-1,4	0,2	0,13
Employed / population ratio (Absorption)	0,7	0,7	-0,3	-0,8	0,1	0,15
Labour force participation rate	0,5	0,6	-0,9	-1,4	-0,4	0,00
Women						
Population 15-64 yrs						
Labour Force	0,8	0,9	-107	-235	22	0,10
Employed	1,0	1,0	-55	-159	49	0,30
Formal sector (Non-agricultural)	1,5	1,4	-27	-132	78	0,61
Informal sector (Non-agricultural)	3,2	3,3	-17	-77	42	0,57
Agriculture	8,6	7,5	6	-23	35	0,69
Private households	3,3	3,4	-17	-70	36	0,53
Unemployed	2,2	2,4	-52	-159	55	0,34
Not economically active	0,8	0,8	154	26	283	0,02
Discouraged work-seekers	3,4	3,3	55	-27	137	0,19
Other(not economically active)	0,9	0,9	99	-34	233	0,14
Rates (%)						
Unemployment rate	1,9	2,0	-0,3	-1,4	0,8	0,63
Employed / population ratio (Absorption)	1,0	1,0	-0,4	-1,0	0,2	0,18
Labour force participation rate	0,8	0,9	-0,8	-1,5	0,0	0,05

Appendix 2A: Sampling variability for labour force characteristics by sex (concluded)						
	Jul-Sep 2012 CV	Oct-Dec 2012 CV	Estimate	Lower 95%	Upper 95%	P-value
Men						
Population 15–64 yrs						
Labour Force	0,5	0,6	-128	-232	-23	0,02
Employed	0,8	0,8	-13	-128	102	0,82
Formal sector (Non-agricultural)	1,1	1,2	-24	-147	98	0,69
Informal sector (Non-agricultural)	2,9	3,0	25	-54	104	0,53
Agriculture	5,9	6,5	18	-24	60	0,39
Private households	6,5	7,6	-32	-62	-1	0,04
Unemployed	2,3	2,4	-114	-221	-8	0,04
Not economically active	0,9	0,9	191	87	295	0,00
Discouraged work-seekers	3,8	4,0	32	-43	106	0,40
Other(not economically active	0,9	1,0	159	60	259	0,00
Rates (%)						
Unemployment rate	2,2	2,3	-0,9	-1,9	0,1	0,09
Employed / population ratio (Absorption)	0,8	0,8	-0,3	-1,0	0,4	0,46
Labour force participation rate	0,5	0,6	-1,0	-1,7	-0,4	0,00

Appendix 2.1A: Sampling variability for labour force characteristics by population group						
	Jul-Sep 2012 CV	Oct-Dec 2012 CV	Estimate	Lower 95%	Upper 95%	P-value
South Africa						
Population 15–64 yrs						
Labour Force	0,5	0,6	-235	-413	-56	0,01
Employed	0,7	0,7	-68	-222	86	0,39
Unemployed	1,8	2,0	-166	-328	-6	0,04
Not economically active	0,6	0,7	345	167	524	0,00
Rates (%)						
Unemployment rate	1,6	1,8	-0,6	-1,4	0,2	0,13
Employed / population ratio (Absorption)	0,7	0,7	-0,3	-0,8	0,1	0,15
Labour force participation rate	0,5	0,6	-0,9	-1,4	-0,4	0,00
Black/African						
Population 15–64 yrs						
Labour Force	0,6	0,7	-200	-349	-50	0,01
Employed	0,9	0,8	-59	-195	77	0,39
Unemployed	2,0	2,2	-141	-292	11	0,07
Not economically active	0,7	0,7	308	158	457	0,00
Rates (%)						
Unemployment rate	1,8	1,9	-0,6	-1,6	0,4	0,21
Employed / population ratio (Absorption)	0,9	0,8	-0,4	-0,9	0,1	0,15
Labour force participation rate	0,6	0,7	-1,0	-1,6	-0,4	0,00
Coloured						
Population 15–64 yrs						
Labour Force	1,2	1,0	-18	-66	30	0,46
Employed	1,6	1,6	7	-37	51	0,75
Unemployed	4,3	4,2	-25	-62	12	0,18
Not economically active	2,1	1,8	26	-22	74	0,29
Rates (%)						
Unemployment rate	4,0	4,1	-1,0	-2,7	0,6	0,21
Employed / population ratio (Absorption)	1,6	1,6	0,1	-1,3	1,5	0,88
Labour force participation rate	1,2	1,0	-0,7	-2,3	0,8	0,35

Appendix 2.1A: Sampling variability for labour force characteristics by population group (concluded)						
	Jul-Sep 2012 CV	Oct-Dec 2012 CV	Estimate	Lower 95%	Upper 95%	P-value
Indian/Asian						
Population 15–64 yrs						
Labour Force	2,1	2,6	14	-17	45	0,37
Employed	2,4	3,9	5	-29	39	0,78
Unemployed	12,7	22,0	9	-16	34	0,47
Not economically active	3,0	3,9	-10	-41	21	0,52
Rates (%)						
Unemployment rate	12,1	21,4	1,3	-2,9	5,6	0,54
Employed / population ratio (Absorption)	2,4	3,9	0,4	-3,3	3,9	0,87
Labour force participation rate	2,1	2,6	1,2	-2,0	4,5	0,45
White						
Population 15–64 yrs						
Labour Force	1,4	1,5	-31	-85	23	0,26
Employed	1,5	1,6	-21	-69	27	0,39
Unemployed	11,2	9,9	-9	-38	18	0,49
Not economically active	2,9	3,0	22	-32	76	0,42
Rates (%)						
Unemployment rate	11,0	9,6	-0,3	-1,7	0,9	0,56
Employed / population ratio (Absorption)	1,5	1,6	-0,5	-2,1	1,1	0,53
Labour force participation rate	1,4	1,5	-0,7	-2,6	1,0	0,36

Appendix 2.2A: Sampling variability for labour force characteristics by province						
	Jul-Sep 2012 CV	Oct-Dec 2012 CV	Estimate	Lower 95%	Upper 95%	P-value
South Africa						
Population 15–64 yrs						
Labour Force	0,5	0,6	-235	-413	-56	0,01
Employed	0,7	0,7	-68	-222	86	0,39
Unemployed	1,8	2,0	-166	-328	-6	0,04
Not economically active	0,6	0,7	345	167	524	0,00
Discouraged work-seekers	3,1	3,0	87	-34	208	0,16
Other	0,7	0,7	259	78	439	0,01
Rates (%)						
Unemployment rate	1,6	1,8	-0,6	-1,4	0,2	0,13
Employed / population ratio (Absorption)	0,7	0,7	-0,3	-0,8	0,1	0,15
Labour force participation rate	0,5	0,6	-0,9	-1,4	-0,4	0,00
Western Cape						
Population 15–64 yrs						
Labour Force	0,9	1,1	-25	-72	23	0,31
Employed	1,6	1,6	18	-33	70	0,49
Unemployed	3,9	3,5	-42	-73	-13	0,01
Not economically active	1,9	2,3	38	-9	85	0,12
Discouraged work-seekers	21,0	20,4	1	-8	11	0,83
Other	2,0	2,5	37	-9	82	0,11
Rates (%)						
Unemployment rate	3,9	3,5	-1,5	-2,8	-0,3	0,02
Employed / population ratio (Absorption)	1,6	1,6	0,4	-1,2	1,8	0,67
Labour force participation rate	0,9	1,1	-0,9	-2,3	0,4	0,16

Appendix 2.2A: Sampling variability for labour force characteristics by province (continued)						
	Jul-Sep 2012 CV	Oct-Dec 2012 CV	Estimate	Lower 95%	Upper 95%	P-value
Eastern Cape						
Population 15–64 yrs						
Labour Force	2,3	2,8	-73	-155	10	0,09
Employed	2,6	2,8	-69	-121	-17	0,01
Unemployed	4,7	6,0	-3	-62	56	0,91
Not economically active	1,8	2,1	81	-1	164	0,05
Discouraged work-seekers	7,2	5,2	82	20	144	0,01
Other	2,0	2,1		-89	88	0,99
Rates (%)						
Unemployment rate	3,9	4,4	1,0	-1,4	3,3	0,41
Employed / population ratio (Absorption)	2,6	2,8	-1,7	-2,9	-0,5	0,01
Labour force participation rate	2,3	2,8	-1,8	-3,8	0,2	0,07
Northern Cape						
Population 15–64 yrs						
Labour Force	2,1	2,0	-6	-28	16	0,58
Employed	2,9	2,9	2	-22	25	0,89
Unemployed	4,0	6,9	-8	-25	9	0,35
Not economically active	2,7	2,6	9	-13	30	0,45
Discouraged work-seekers	13,2	15,6	-2	-11	7	0,62
Other	2,6	2,2	11	-5	27	0,19
Rates (%)						
Unemployment rate	3,8	6,2	-1,6	-5,5	2,5	0,46
Employed / population ratio (Absorption)	2,9	2,9	0,2	-3,2	3,4	0,95
Labour force participation rate	2,1	2,0	-1,0	-4,0	2,0	0,50

Appendix 2.2A: Sampling variability for labour force characteristics by province (continued)						
	Jul-Sep 2012 CV	Oct-Dec 2012 CV	Estimate	Lower 95%	Upper 95%	P-value
Free State						
Population 15–64 yrs						
Labour Force	1,5	1,7	15	-32	61	0,54
Employed	2,2	2,3	-4	-36	29	0,84
Unemployed	3,9	3,0	17	-14	49	0,27
Not economically active	2,1	2,4	-11	-57	35	0,64
Discouraged work-seekers	8,8	12,5	-5	-28	18	0,68
Other	2,2	2,7	-6	-54	42	0,81
Rates (%)						
Unemployment rate	3,5	2,7	1,2	-1,0	3,4	0,28
Employed / population ratio (Absorption)	2,2	2,3	-0,3	-2,0	1,5	0,78
Labour force participation rate	1,5	1,7	0,6	-1,8	3,1	0,60
KwaZulu-Natal						
Population 15–64 yrs						
Labour Force	1,7	2,0	-3	-89	84	0,95
Employed	2,2	2,0	-40	-119	40	0,33
Unemployed	5,5	6,2	37	-37	112	0,33
Not economically active	1,5	1,7	27	-59	114	0,54
Discouraged work-seekers	7,4	7,1	19	-40	77	0,54
Other	1,7	1,8	9	-84	102	0,85
Rates (%)						
Unemployment rate	5,1	5,2	1,2	-0,9	3,2	0,26
Employed / population ratio (Absorption)	2,2	2,0	-0,7	-1,9	0,5	0,23
Labour force participation rate	1,7	2,0	-0,2	-1,5	1,1	0,75

Appendix 2.2A: Sampling variability for labour force characteristics by province (continued)						
	Jul-Sep 2012 CV	Oct-Dec 2012 CV	Estimate	Lower 95%	Upper 95%	P-value
North West						
Population 15–64 yrs						
Labour Force	2,6	3,0	-21	-73	32	0,45
Employed	2,4	3,5	2	-31	34	0,92
Unemployed	7,5	6,6	-21	-59	15	0,25
Not economically active	2,4	2,6	26	-26	79	0,33
Discouraged work-seekers	7,9	7,7	2	-35	39	0,92
Other	2,7	3,3	24	-27	76	0,36
Rates (%)						
Unemployment rate	5,9	6,0	-1,7	-4,6	1,1	0,24
Employed / population ratio (Absorption)	2,4	3,5	0,0	-1,6	1,6	0,98
Labour force participation rate	2,6	3,0	-1,0	-3,7	1,4	0,39
Gauteng						
Population 15–64 yrs						
Labour Force	1,0	1,1	-99	-209	12	0,08
Employed	1,5	1,5	-16	-118	86	0,76
Unemployed	3,8	4,3	-83	-189	24	0,13
Not economically active	2,4	2,4	126	15	236	0,03
Discouraged work-seekers	11,7	10,9	35	-18	87	0,19
Other	2,5	2,4	91	-9	192	0,08
Rates (%)						
Unemployment rate	3,6	4,0	-1,1	-2,8	0,7	0,23
Employed / population ratio (Absorption)	1,5	1,5	-0,4	-1,7	0,9	0,56
Labour force participation rate	1,0	1,1	-1,5	-2,9	-0,1	0,04

Appendix 2.2A: Sampling variability for labour force characteristics by province (concluded)						
	Jul-Sep 2012 CV	Oct-Dec 2012 CV	Estimate	Lower 95%	Upper 95%	P-value
Mpumalanga						
Population 15–64 yrs						
Labour Force	2,2	2,0	12	-23	47	0,51
Employed	2,2	2,6	31	-9	70	0,12
Unemployed	6,9	7,6	-19	-50	13	0,24
Not economically active	2,9	2,7	-2	-37	33	0,91
Discouraged work-seekers	8,0	8,3	-17	-42	8	0,17
Other	2,8	2,7	15	-21	51	0,40
Rates (%)						
Unemployment rate	5,4	6,5	-1,7	-3,9	0,6	0,14
Employed / population ratio (Absorption)	2,2	2,6	1,1	-0,5	2,8	0,18
Labour force participation rate	2,2	2,0	0,3	-1,2	1,8	0,73
Limpopo						
Population 15–64 yrs						
Labour Force	2,7	3,3	-36	-85	13	0,15
Employed	3,3	4,0	8	-45	61	0,77
Unemployed	6,1	8,4	-44	-80	-8	0,02
Not economically active	1,9	2,1	51	3	100	0,04
Discouraged work-seekers	5,6	7,8	-27	-70	17	0,23
Other	2,2	2,4	78	17	140	0,01
Rates (%)						
Unemployment rate	5,7	8,1	-2,6	-5,2	-0,1	0,04
Employed / population ratio (Absorption)	3,3	4,0	0,1	-1,5	1,6	0,91
Labour force participation rate	2,7	3,3	-1,2	-2,7	0,2	0,09

Appendix 3.1A: Sampling variability for the employed by industry and sex						
	Jul-Sep 2012 CV	Oct-Dec 2012 CV	Estimate	Lower 95%	Upper 95%	P-value
Both sexes	0,7	0,7	-68	-222	86	0,39
Agriculture	5,8	6,0	24	-29	78	0,37
Mining	7,3	9,4	8	-34	50	0,71
Manufacturing	2,8	2,8	3	-84	90	0,95
Utilities	10,0	10,8	-7	-25	13	0,52
Construction	3,2	3,1	15	-58	87	0,69
Trade	2,2	2,1	-41	-142	60	0,43
Transport	4,3	4,8	-18	-84	47	0,57
Finance	3,0	2,9	-7	-89	75	0,86
Community and social services	2,1	2,1	3	-91	98	0,95
Private households	3,2	3,5	-48	-113	15	0,13
Women	1,0	1,0	-55	-159	49	0,30
Agriculture	8,6	7,5	6	-23	35	0,69
Mining	13,0	15,2	2	-12	16	0,75
Manufacturing	4,8	4,6	-4	-48	40	0,86
Utilities	20,7	20,9	-5	-12	3	0,24
Construction	9,9	9,5	14	-11	38	0,28
Trade	2,8	2,6	16	-59	91	0,68
Transport	9,8	10,7	-23	-48	2	0,07
Finance	4,3	4,6	8	-41	58	0,74
Community and social services	2,3	2,5	-54	-122	15	0,12
Private households	3,3	3,4	-17	-70	36	0,53
Men	0,8	0,8	-13	-128	102	0,82
Agriculture	5,9	6,5	18	-24	60	0,39
Mining	7,8	9,4	6	-30	42	0,75
Manufacturing	3,1	3,1	7	-65	79	0,85
Utilities	10,1	12,0	-2	-19	16	0,84
Construction	3,3	3,2	1	-69	71	0,98
Trade	2,9	2,8	-57	-142	28	0,19
Transport	4,5	4,6	4	-51	60	0,88
Finance	3,4	3,0	-15	-74	42	0,60
Community and social services	3,1	3,0	57	-6	120	0,07
Private households	6,5	7,6	-32	-62	-1	0,04

Appendix 3.4A: Sampling variability for the employed by province and sector						
	Jul-Sep 2012 CV	Oct-Dec 2012 CV	Estimate	Lower 95%	Upper 95%	P-value
South Africa	0,7	0,7	-68	-222	86	0,39
Formal sector (Non-agricultural)	1,0	1,0	-52	-218	114	0,54
Informal sector (Non-agricultural)	2,3	2,3	8	-91	107	0,87
Agriculture	5,8	6,0	24	-29	78	0,37
Private households	3,2	3,5	-48	-113	15	0,13
Western Cape	1,6	1,6	18	-33	70	0,49
Formal sector (Non-agricultural)	2,2	2,3	22	-29	73	0,39
Informal sector (Non-agricultural)	8,0	7,8	14	-11	38	0,26
Agriculture	10,8	11,5	6	-10	23	0,47
Private households	8,3	9,1	-24	-36	-12	0,00
Eastern Cape	2,6	2,8	-69	-121	-17	0,01
Formal sector (Non-agricultural)	3,7	3,7	-38	-90	14	0,15
Informal sector (Non-agricultural)	6,9	5,9	-39	-68	-10	0,01
Agriculture	21,3	12,8	0	-15	16	0,94
Private households	10,5	9,6	7	-10	25	0,40
Northern Cape	2,9	2,9	2	-22	25	0,89
Formal sector (Non-agricultural)	4,1	5,8	-6	-32	18	0,59
Informal sector (Non-agricultural)	8,8	11,3	1	-7	9	0,79
Agriculture	6,6	10,6	4	-8	15	0,55
Private households	18,3	12,4	4	-4	12	0,34
Free State	2,2	2,3	-4	-36	29	0,84
Formal sector (Non-agricultural)	3,1	3,4	1	-26	28	0,94
Informal sector (Non-agricultural)	7,3	7,5	7	-11	25	0,47
Agriculture	18,9	11,4	-5	-23	12	0,55
Private households	7,4	7,9	-5	-16	5	0,27
KwaZulu-Natal	2,2	2,0	-40	-119	40	0,33
Formal sector (Non-agricultural)	2,9	2,6	-23	-95	49	0,53
Informal sector (Non-agricultural)	5,3	4,7	-22	-73	28	0,38
Agriculture	19,6	17,3	10	-7	28	0,24
Private households	7,3	9,2	-5	-34	25	0,76

Appendix 3.4A: Sampling variability for the employed by province and sector (concluded)						
	Jul-Sep 2012 CV	Oct-Dec 2012 CV	Estimate	Lower 95%	Upper 95%	P-value
North West	2,4	3,5	2	-31	34	0,92
Formal sector (Non-agricultural)	3,1	4,0	25	-5	55	0,10
Informal sector (Non-agricultural)	8,3	7,7	1	-16	16	0,98
Agriculture	20,8	23,2	-3	-10	3	0,35
Private households	10,3	13,0	-21	-32	-9	0,00
Gauteng	1,5	1,5	-16	-118	86	0,76
Formal sector (Non-agricultural)	2,1	2,3	-48	-169	72	0,43
Informal sector (Non-agricultural)	4,8	5,6	36	-26	98	0,26
Agriculture	26,6	36,7	-4	-22	14	0,67
Private households	8,3	8,3		-46	47	0,98
Mpumalanga	2,2	2,6	31	-9	70	0,12
Formal sector (Non-agricultural)	3,0	2,8	-7	-42	29	0,71
Informal sector (Non-agricultural)	6,9	7,2	29	6	52	0,01
Agriculture	11,1	10,3	8	-17	34	0,52
Private households	10,4	9,8		-12	12	0,99
Limpopo	3,3	4,0	8	-45	61	0,77
Formal sector (Non-agricultural)	4,1	6,7	23	-29	75	0,38
Informal sector (Non-agricultural)	6,3	6,5	-17	-48	13	0,26
Agriculture	16,9	21,7	8	-16	32	0,52
Private households	7,6	9,4	-6	-19	7	0,39

Appendix 3.5A: Sampling variability for the employed by sex and occupation						
	Jul-Sep 2012 CV	Oct-Dec 2012 CV	Estimate	Lower 95%	Upper 95%	P-value
Both sexes	0,7	0,7	-68	-222	86	0,39
Manager	3,8	4,1	-60	-132	13	0,11
Professional	4,1	4,3	7	-49	64	0,80
Technician	2,9	2,7	-20	-109	69	0,66
Clerk	2,9	2,8	53	-28	135	0,20
Sales and services	2,6	2,7	-66	-159	27	0,17
Skilled agriculture	14,1	11,3	-7	-26	11	0,42
Craft and related trade	2,5	2,6	-2	-82	77	0,95
Plant and machine operator	3,2	3,5	-11	-82	59	0,75
Elementary	2,0	1,9	52	-50	155	0,32
Domestic worker	3,3	3,3	-15	-66	38	0,59
Women	1,0	1,0	-55	-159	49	0,30
Manager	5,7	6,8	-16	-60	28	0,47
Professional	6,4	5,6	2	-34	39	0,89
Technician	3,3	3,4	-30	-97	36	0,37
Clerk	3,4	3,3	45	-22	112	0,19
Sales and services	3,2	3,3	-60	-121	1	0,05
Skilled agriculture	23,8	18,4	2	-10	14	0,70
Craft and related trade	7,0	6,8	21	-5	46	0,11
Plant and machine operator	9,2	9,1	-8	-36	20	0,57
Elementary	2,7	2,8	-2	-70	66	0,95
Domestic worker	3,3	3,5	-9	-61	43	0,73
Men	0,8	0,8	-13	-128	102	0,82
Manager	4,3	4,1	-44	-100	13	0,13
Professional	5,0	5,7	5	-43	53	0,84
Technician	4,1	3,7	11	-42	63	0,69
Clerk	5,1	4,5	8	-35	51	0,72
Sales and services	3,7	3,6	-6	-73	61	0,86
Skilled agriculture	16,1	13,7	-10	-22	2	0,12
Craft and related trade	2,6	2,8	-23	-99	52	0,54
Plant and machine operator	3,3	3,5	-3	-68	62	0,92
Elementary	2,5	2,8	54	-29	138	0,20
Domestic worker	16,9	16,2	-6	-18	8	0,44

Appendix 2B: Sampling variability for labour force characteristics by sex						
	Oct–Dec 2011 CV	Oct–Dec 2012 CV	Estimate	Lower 95%	Upper 95%	P-Value
Both sexes						
Population 15–64 yrs						
Labour Force	0,5	0,6	337	94	580	0,01
Employed	0,7	0,7	80	-151	311	0,50
Formal sector (Non-agricultural)	1,0	1,0	-5	-243	234	0,97
Informal sector (Non-agricultural)	2,5	2,3	71	-63	206	0,30
Agriculture	6,9	6,0	55	-5	115	0,07
Private households	3,2	3,5	-42	-136	52	0,38
Unemployed	1,9	2,0	257	49	464	0,02
Not economically active	0,6	0,7	121	-122	364	0,33
Discouraged work-seekers	2,8	3,0	-58	-219	102	0,47
Other(not economically active)	0,6	0,7	180	-45	405	0,12
Rates (%)						
Unemployment rate	1,7	1,8	1,0	-0,1	2,0	0,07
Employed / population ratio (Absorption)	0,7	0,7	-0,3	-1,0	0,4	0,36
Labour force participation rate	0,5	0,6	0,3	-0,5	1,0	0,48
Women						
Population 15–64 yrs						
Labour Force	0,8	0,9	114	-53	281	0,18
Employed	1,0	1,0	-35	-190	119	0,65
Formal sector (Non-agricultural)	1,4	1,4	-38	-183	107	0,61
Informal sector (Non-agricultural)	3,4	3,3	0	-77	78	1,00
Agriculture	8,6	7,5	29	-9	66	0,13
Private households	3,2	3,4	-26	-101	48	0,49
Unemployed	2,4	2,4	150	17	282	0,03
Not economically active	0,7	0,8	83	-83	251	0,33
Discouraged work-seekers	3,4	3,3	-13	-116	91	0,82
Other(not economically active)	0,8	0,9	96	-61	253	0,23
Rates (%)						
Unemployment rate	2,1	2,0	1,4	0,0	2,9	0,05
Employed / population ratio (Absorption)	1,0	1,0	-0,6	-1,5	0,3	0,18
Labour force participation rate	0,8	0,9	0,1	-0,9	1,1	0,82

Appendix 2B: Sampling variability for labour force characteristics by sex (concluded)						
	Oct-Dec 2011 CV	Oct-Dec 2012 CV	Estimate	Lower 95%	Upper 95%	P-Value
Men						
Population 15–64 yrs						
Labour Force	0,6	0,6	222	75	370	0,00
Employed	0,8	0,8	116	-41	272	0,15
Formal sector (Non-agricultural)	1,1	1,2	34	-130	197	0,69
Informal sector (Non-agricultural)	3,2	3,0	71	-36	179	0,19
Agriculture	7,6	6,5	26	-23	77	0,30
Private households	6,1	7,6	-15	-58	26	0,46
Unemployed	2,4	2,4	107	-28	242	0,12
Not economically active	0,9	0,9	38	-109	185	0,61
Discouraged work-seekers	3,5	4,0	-46	-142	50	0,35
Other(not economically active)	1,0	1,0	84	-52	219	0,23
Rates (%)						
Unemployment rate	2,3	2,3	0,6	-0,7	1,9	0,37
Employed / population ratio (Absorption)	0,8	0,8	0,0	-1,0	0,9	0,92
Labour force participation rate	0,6	0,6	0,4	-0,5	1,3	0,40

Appendix 2.1B: Sampling variability for labour force characteristics by population group						
	Oct-Dec 2011 CV	Oct-Dec 2012 CV	Estimate	Lower 95%	Upper 95%	P-Value
South Africa						
Population 15–64 yrs						
Labour Force	0,5	0,6	337	94	580	0,01
Employed	0,7	0,7	80	-151	311	0,50
Unemployed	1,9	2,0	257	49	464	0,02
Not economically active	0,6	0,7	121	-122	364	0,33
Rates (%)						
Unemployment rate	1,7	1,8	1,0	-0,1	2,0	0,07
Employed / population ratio (Absorption)	0,7	0,7	-0,3	-1,0	0,4	0,36
Labour force participation rate	0,5	0,6	0,3	-0,5	1,0	0,48
Black/African						
Population 15–64 yrs						
Labour Force	0,7	0,7	343	134	552	0,00
Employed	0,9	0,8	141	-55	336	0,16
Unemployed	2,1	2,2	203	6	400	0,04
Not economically active	0,7	0,7	101	-108	310	0,34
Rates (%)						
Unemployment rate	1,9	1,9	0,8	-0,5	2,1	0,23
Employed / population ratio (Absorption)	0,9	0,8	-0,1	-0,9	0,7	0,81
Labour force participation rate	0,7	0,7	0,5	-0,4	1,3	0,29
Coloured						
Population 15–64 yrs						
Labour Force	1,1	1,0	35	-16	86	0,18
Employed	1,5	1,6	-19	-83	45	0,55
Unemployed	5,0	4,2	54	7	102	0,02
Not economically active	1,9	1,8	-3	-53	49	0,93
Rates (%)						
Unemployment rate	4,7	4,1	2,4	0,0	4,8	0,05
Employed / population ratio (Absorption)	1,5	1,6	-1,2	-3,3	0,9	0,28
Labour force participation rate	1,1	1,0	0,5	-1,2	2,1	0,59

Appendix 2.1B: Sampling variability for labour force characteristics by population group (concluded)						
	Oct–Dec 2011 CV	Oct–Dec 2012 CV	Estimate	Lower 95%	Upper 95%	P-Value
Indian/Asian						
Population 15–64 yrs						
Labour Force	2,5	2,6	37	-9	83	0,11
Employed	3,4	3,9	9	-43	61	0,74
Unemployed	18,1	22,0	29	-1	58	0,06
Not economically active	3,3	3,9	-21	-67	25	0,37
Rates (%)						
Unemployment rate	18,5	21,4	4,5	-0,8	9,6	0,09
Employed / population ratio (Absorption)	3,4	3,9	0,1	-5,5	5,5	0,99
Labour force participation rate	2,5	2,6	2,9	-2,0	7,8	0,24
White						
Population 15–64 yrs						
Labour Force	1,3	1,5	-78	-155	-2	0,05
Employed	1,5	1,6	-50	-123	23	0,18
Unemployed	10,1	9,9	-29	-59	1	0,06
Not economically active	2,7	3,0	44	-33	120	0,26
Rates (%)						
Unemployment rate	10,1	9,6	-1,1	-2,6	0,2	0,10
Employed / population ratio (Absorption)	1,5	1,6	-1,0	-3,3	1,5	0,46
Labour force participation rate	1,3	1,5	-1,8	-4,3	0,7	0,16

Appendix 2.2B: Sampling variability for labour force characteristics by province						
	Oct-Dec 2011 CV	Oct-Dec 2012 CV	Estimate	Lower 95%	Upper 95%	P-Value
South Africa						
Population 15–64 yrs						
Labour Force	0,5	0,6	337	94	580	0,01
Employed	0,7	0,7	80	-151	311	0,50
Unemployed	1,9	2,0	257	49	464	0,02
Not economically active	0,6	0,7	121	-122	364	0,33
Discouraged work-seekers	2,8	3,0	-58	-219	102	0,47
Other	0,6	0,7	180	-45	405	0,12
Rates (%)						
Unemployment rate	1,7	1,8	1,0	-0,1	2,0	0,07
Employed / population ratio (Absorption)	0,7	0,7	-0,3	-1,0	0,4	0,36
Labour force participation rate	0,5	0,6	0,3	-0,5	1,0	0,48
Western Cape						
Population 15–64 yrs						
Labour Force	1,0	1,1	47	-19	114	0,16
Employed	1,6	1,6	-18	-95	58	0,63
Unemployed	4,0	3,5	66	12	121	0,02
Not economically active	2,1	2,3	6	-60	73	0,85
Discouraged work-seekers	16,8	20,4	-16	-32	0	0,06
Other	2,1	2,5	22	-45	89	0,52
Rates (%)						
Unemployment rate	4,0	3,5	2,3	0,1	4,6	0,04
Employed / population ratio (Absorption)	1,6	1,6	-1,3	-3,6	0,9	0,23
Labour force participation rate	1,0	1,1	0,4	-1,6	2,2	0,75

Appendix 2.2B: Sampling variability for labour force characteristics by province (continued)						
	Oct-Dec 2011 CV	Oct-Dec 2012 CV	Estimate	Lower 95%	Upper 95%	P-Value
Eastern Cape						
Population 15–64 yrs						
Labour Force	2,7	2,8	-24	-130	83	0,67
Employed	2,7	2,8	-65	-163	32	0,19
Unemployed	8,0	6,0	42	-37	120	0,30
Not economically active	2,0	2,1	67	-40	173	0,22
Discouraged work-seekers	8,1	5,2	125	71	180	0,00
Other	2,1	2,1	-59	-164	45	0,27
Rates (%)						
Unemployment rate	6,5	4,4	2,7	-1,2	6,5	0,17
Employed / population ratio (Absorption)	2,7	2,8	-1,8	-4,2	0,5	0,12
Labour force participation rate	2,7	2,8	-1,0	-3,5	1,5	0,44
Northern Cape						
Population 15–64 yrs						
Labour Force	2,3	2,0	11	-11	33	0,32
Employed	3,4	2,9	1	-20	22	0,93
Unemployed	8,0	6,9	10	-10	30	0,33
Not economically active	2,8	2,6	-2	-24	20	0,84
Discouraged work-seekers	11,1	15,6	-11	-21	0	0,04
Other	3,3	2,2	9	-14	31	0,45
Rates (%)						
Unemployment rate	7,4	6,2	1,7	-2,8	6,3	0,45
Employed / population ratio (Absorption)	3,4	2,9	-0,3	-3,3	2,6	0,81
Labour force participation rate	2,3	2,0	0,8	-2,2	3,8	0,58

Appendix 2.2B: Sampling variability for labour force characteristics by province (continued)						
	Oct-Dec 2011 CV	Oct-Dec 2012 CV	Estimate	Lower 95%	Upper 95%	P-Value
Free State						
Population 15-64 yrs						
Labour Force	1,8	1,7	29	-14	71	0,19
Employed	2,0	2,3	-21	-64	22	0,34
Unemployed	4,1	3,0	49	20	79	0,00
Not economically active	2,3	2,4	-15	-57	28	0,51
Discouraged work-seekers	16,3	12,5	-5	-39	29	0,79
Other	2,5	2,7	-10	-52	32	0,65
Rates (%)						
Unemployment rate	3,3	2,7	3,8	1,1	6,4	0,01
Employed / population ratio (Absorption)	2,0	2,3	-1,4	-3,7	0,9	0,23
Labour force participation rate	1,8	1,7	1,1	-1,2	3,3	0,35
KwaZulu-Natal						
Population 15-64 yrs						
Labour Force	1,7	2,0	39	-93	172	0,56
Employed	1,7	2,0	-69	-180	43	0,23
Unemployed	5,3	6,2	108	13	203	0,03
Not economically active	1,4	1,7	64	-69	196	0,35
Discouraged work-seekers	5,2	7,1	42	-50	134	0,37
Other	1,7	1,8	22	-105	149	0,73
Rates (%)						
Unemployment rate	4,6	5,2	3,2	0,6	5,7	0,02
Employed / population ratio (Absorption)	1,7	2,0	-1,6	-3,2	0,1	0,06
Labour force participation rate	1,7	2,0	-0,1	-2,1	1,8	0,90

Appendix 2.2B: Sampling variability for labour force characteristics by province (continued)						
	Oct-Dec 2011 CV	Oct-Dec 2012 CV	Estimate	Lower 95%	Upper 95%	P-Value
North West						
Population 15–64 yrs						
Labour Force	2,7	3,0	45	-11	102	0,12
Employed	2,7	3,5	47	-9	103	0,10
Unemployed	7,2	6,6	-1	-41	38	0,94
Not economically active	2,2	2,6	-21	-78	36	0,46
Discouraged work-seekers	5,7	7,7	-63	-107	-20	0,00
Other	2,6	3,3	42	-20	105	0,19
Rates (%)						
Unemployment rate	5,8	6,0	-1,3	-5,1	2,5	0,51
Employed / population ratio (Absorption)	2,7	3,5	1,8	-0,9	4,6	0,18
Labour force participation rate	2,7	3,0	1,7	-1,1	4,4	0,24
Gauteng						
Population 15–64 yrs						
Labour Force	1,0	1,1	-16	-162	130	0,83
Employed	1,2	1,5	63	-78	204	0,38
Unemployed	3,7	4,3	-80	-212	54	0,24
Not economically active	2,2	2,4	123	-23	269	0,10
Discouraged work-seekers	10,4	10,9	-15	-86	56	0,68
Other	2,0	2,4	138	20	255	0,02
Rates (%)						
Unemployment rate	3,3	4,0	-1,4	-3,6	0,8	0,22
Employed / population ratio (Absorption)	1,2	1,5	0,1	-1,7	1,9	0,92
Labour force participation rate	1,0	1,1	-1,1	-3,0	0,7	0,23

Appendix 2.2B: Sampling variability for labour force characteristics by province (concluded)						
	Oct-Dec 2011 CV	Oct-Dec 2012 CV	Estimate	Lower 95%	Upper 95%	P-Value
Mpumalanga						
Population 15–64 yrs						
Labour Force	1,7	2,0	80	22	139	0,01
Employed	2,3	2,6	36	-20	91	0,20
Unemployed	5,8	7,6	45	-14	104	0,14
Not economically active	2,0	2,7	-40	-99	18	0,18
Discouraged work-seekers	7,8	8,3	-6	-47	35	0,78
Other	2,7	2,7	-34	-94	26	0,26
Rates (%)						
Unemployment rate	5,2	6,5	1,7	-2,2	5,5	0,40
Employed / population ratio (Absorption)	2,3	2,6	0,9	-1,5	3,2	0,48
Labour force participation rate	1,7	2,0	2,5	0,0	4,9	0,05
Limpopo						
Population 15–64 yrs						
Labour Force	3,0	3,3	124	39	208	0,00
Employed	3,8	4,0	107	21	192	0,02
Unemployed	7,9	8,4	17	-30	64	0,48
Not economically active	1,7	2,1	-60	-144	25	0,17
Discouraged work-seekers	6,7	7,8	-111	-178	-43	0,00
Other	2,1	2,4	51	-47	149	0,31
Rates (%)						
Unemployment rate	7,7	8,1	-0,6	-4,1	3,0	0,75
Employed / population ratio (Absorption)	3,8	4,0	2,5	0,0	5,1	0,05
Labour force participation rate	3,0	3,3	3,0	0,4	5,4	0,02

Appendix 3.1B: Sampling variability for the employed by industry and sex						
	Oct-Dec 2011 CV	Oct-Dec 2012 CV	Estimate	Lower 95%	Upper 95%	P-Value
Both sexes	0,7	0,7	80	-151	311	0,50
Agriculture	6,9	6,0	55	-5	115	0,07
Mining	9,9	9,4	30	-37	97	0,38
Manufacturing	2,8	2,8	-59	-193	74	0,38
Utilities	10,6	10,8	17	-7	42	0,15
Construction	3,7	3,1	4	-92	100	0,93
Trade	2,2	2,1	-139	-301	22	0,09
Transport	3,9	4,8	28	-70	125	0,58
Finance	2,8	2,9	65	-64	194	0,32
Community and social services	2,1	2,1	126	-43	296	0,14
Private households	3,2	3,5	-42	-136	52	0,38
Women	1,0	1,0	-35	-190	119	0,65
Agriculture	8,6	7,5	29	-9	66	0,13
Mining	16,3	15,2	15	-1	32	0,07
Manufacturing	4,7	4,6	-24	-91	44	0,49
Utilities	32,6	20,9	8	-4	20	0,17
Construction	8,5	9,5	23	-10	56	0,18
Trade	2,7	2,6	-55	-158	48	0,30
Transport	7,6	10,7	-25	-64	15	0,22
Finance	3,8	4,6	4	-82	91	0,93
Community and social services	2,4	2,5	15	-100	130	0,80
Private households	3,2	3,4	-26	-101	48	0,49
Men	0,8	0,8	116	-41	272	0,15
Agriculture	7,6	6,5	26	-23	77	0,30
Mining	10,1	9,4	14	-46	75	0,64
Manufacturing	3,0	3,1	-35	-134	63	0,48
Utilities	12,7	12,0	9	-13	32	0,40
Construction	3,9	3,2	-19	-110	73	0,69
Trade	2,9	2,8	-85	-197	27	0,14
Transport	4,2	4,6	52	-27	130	0,20
Finance	3,6	3,0	61	-24	145	0,16
Community and social services	2,8	3,0	111	18	205	0,02
Private households	6,1	7,6	-15	-58	26	0,46

Appendix 3.4B: Sampling variability for the employed by province and sector						
	Oct–Dec 2011 CV	Oct–Dec 2012 CV	Estimate	Lower 95%	Upper 95%	P-Value
South Africa	0,7	0,7	80	-151	311	0,50
Formal sector (Non-agricultural)	1,0	1,0	-5	-243	234	0,97
Informal sector (Non-agricultural)	2,5	2,3	71	-63	206	0,30
Agriculture	6,9	6,0	55	-5	115	0,07
Private households	3,2	3,5	-42	-136	52	0,38
Western Cape	1,6	1,6	-18	-95	58	0,63
Formal sector (Non-agricultural)	2,2	2,3	-33	-111	46	0,41
Informal sector (Non-agricultural)	8,5	7,8	1	-36	39	0,93
Agriculture	11,8	11,5	35	13	56	0,00
Private households	7,2	9,1	-22	-40	-4	0,02
Eastern Cape	2,7	2,8	-65	-163	32	0,19
Formal sector (Non-agricultural)	3,6	3,7	-73	-152	6	0,07
Informal sector (Non-agricultural)	6,4	5,9	5	-34	43	0,81
Agriculture	20,1	12,8	-4	-29	22	0,79
Private households	12,8	9,6	6	-28	41	0,72
Northern Cape	3,4	2,9	1	-20	22	0,93
Formal sector (Non-agricultural)	5,5	5,8	2	-23	27	0,88
Informal sector (Non-agricultural)	13,8	11,3	4	-5	13	0,40
Agriculture	10,7	10,6	-6	-18	5	0,29
Private households	13,8	12,4	2	-10	13	0,81
Free State	2,0	2,3	-21	-64	22	0,34
Formal sector (Non-agricultural)	2,7	3,4	-22	-62	17	0,27
Informal sector (Non-agricultural)	7,0	7,5	-5	-30	21	0,72
Agriculture	9,1	11,4	1	-19	20	0,95
Private households	8,7	7,9	6	-12	23	0,55
KwaZulu-Natal	1,7	2,0	-69	-180	43	0,23
Formal sector (Non-agricultural)	2,9	2,6	34	-78	147	0,54
Informal sector (Non-agricultural)	6,0	4,7	-123	-189	-57	0,00
Agriculture	18,1	17,3	4	-19	27	0,74
Private households	8,2	9,2	16	-27	60	0,46

Appendix 3.4B: Sampling variability for the employed by province and sector (concluded)						
	Oct-Dec 2011 CV	Oct-Dec 2012 CV	Estimate	Lower 95%	Upper 95%	P-Value
North West	2,7	3,5	47	-9	103	0,10
Formal sector (Non-agricultural)	3,7	4,0	41	-10	91	0,12
Informal sector (Non-agricultural)	8,8	7,7	18	-7	42	0,15
Agriculture	21,5	23,2	-2	-9	4	0,52
Private households	11,6	13,0	-9	-26	9	0,32
Gauteng	1,2	1,5	63	-78	204	0,38
Formal sector (Non-agricultural)	1,8	2,3	36	-126	197	0,67
Informal sector (Non-agricultural)	5,6	5,6	92	12	172	0,03
Agriculture	29,9	36,7	-19	-40	2	0,08
Private households	6,7	8,3	-45	-108	18	0,16
Mpumalanga	2,3	2,6	36	-20	91	0,20
Formal sector (Non-agricultural)	3,9	2,8	-8	-52	35	0,71
Informal sector (Non-agricultural)	6,0	7,2	31	-2	64	0,07
Agriculture	13,0	10,3	20	3	37	0,02
Private households	9,3	9,8	-7	-30	16	0,55
Limpopo	3,8	4,0	107	21	192	0,02
Formal sector (Non-agricultural)	4,5	6,7	19	-50	88	0,59
Informal sector (Non-agricultural)	6,1	6,5	49	1	97	0,05
Agriculture	30,6	21,7	27	0	53	0,05
Private households	10,6	9,4	12	-9	33	0,28

Appendix 3.5B: Sampling variability for the employed by sex and occupation						
	Oct-Dec 2011 CV	Oct-Dec 2012 CV	Estimate	Lower 95%	Upper 95%	P-Value
Both sexes	0,7	0,7	80	-151	311	0,50
Manager	3,1	4,1	-55	-167	57	0,34
Professional	4,5	4,3	60	-20	141	0,14
Technician	2,7	2,7	5	-96	106	0,92
Clerk	2,5	2,8	-80	-189	30	0,15
Sales and services	2,3	2,7	36	-98	169	0,60
Skilled agriculture	12,2	11,3	-7	-27	13	0,48
Craft and related trade	2,7	2,6	23	-94	138	0,71
Plant and machine operator	3,0	3,5	13	-87	114	0,79
Elementary	2,1	1,9	101	-45	247	0,17
Domestic worker	3,3	3,3	-17	-94	60	0,67
Women	1,0	1,0	-35	-190	119	0,65
Manager	5,7	6,8	-10	-74	53	0,75
Professional	5,6	5,6	2	-48	53	0,93
Technician	3,6	3,4	-9	-88	69	0,82
Clerk	3,0	3,3	-51	-141	40	0,27
Sales and services	3,1	3,3	23	-51	98	0,54
Skilled agriculture	22,3	18,4	3	-10	16	0,62
Craft and related trade	7,2	6,8	3	-32	39	0,86
Plant and machine operator	8,3	9,1	-18	-52	15	0,28
Elementary	2,9	2,8	36	-57	129	0,45
Domestic worker	3,3	3,5	-15	-90	60	0,70
Men	0,8	0,8	116	-41	272	0,15
Manager	3,7	4,1	-45	-127	38	0,29
Professional	5,2	5,7	58	3	114	0,04
Technician	3,8	3,7	15	-52	82	0,67
Clerk	4,3	4,5	-29	-80	22	0,27
Sales and services	3,1	3,6	11	-87	111	0,81
Skilled agriculture	12,7	13,7	-10	-24	3	0,14
Craft and related trade	2,8	2,8	19	-89	128	0,73
Plant and machine operator	3,3	3,5	32	-61	124	0,50
Elementary	2,8	2,8	65	-57	187	0,29
Domestic worker	17,4	16,2	-2	-18	14	0,83