



Country Opinion Surveys

FY 2023 **Algeria** Country Opinion Survey Report

Acknowledgements

The Algeria Country Opinion Survey is part of the Country Opinion Survey Program series of the World Bank Group. This report was prepared by the Business Intelligence (BI) team, led by José De Buerba (Senior External Affairs Officer) and Svetlana Markova (Senior External Affairs Officer). Yulia Danilina, Jessica Cameron, Nan Lin, and Sofya Gubaydullina oversaw the design, reporting, and analysis of the survey results. Noreen Wambui and Irina Popova provided data support.

BI acknowledges the significant contribution of the Algeria country team. In particular, BI is grateful for the support from Fella Damerdji (Program Assistant) and Salim Gora (Consultant) who coordinated the survey-related activities from Algiers, Algeria.



Contents

Objectives

Methodology Overview

Overall Context

Overall Attitudes Toward the World Bank Group

World Bank Group's Work and Engagement on the Ground

Communications and Outreach

Sample Demographics and Detailed Methodology



Objectives

This survey was designed to assist the World Bank Group (WBG) in gaining a better understanding of how stakeholders in Algeria perceive the WBG. The survey explored the following questions:

1. **Overall Context:** How familiar are they with the WBG? How much do they trust the WBG?
2. **Key Indicators:** What opinion do key stakeholders have of the WBG regarding its effectiveness, relevance, alignment with Algeria's development priorities, and other key indicators? Are opinions improving or declining?
3. **Engagement and Work on the Ground:** How is the WBG perceived as a development partner? Are opinions improving or declining? Are opinions significantly different between stakeholder groups?
4. **Communication and Outreach:** What are the preferred communication channels and which channels are reported to be used the most?
5. **Message Recall:** What key topics that the WBG communicates do stakeholders recall? Is there a relationship between message recall and views of the WBG's work?



Methodology Overview

■ Fielded May 2023 thru September 2023

- 258 potential participants were asked to complete a mostly quantitative survey
- Respondents completed the questionnaires online
- List of names provided solely by the WBG country team
- The online survey platform is monitored and managed by the COS team

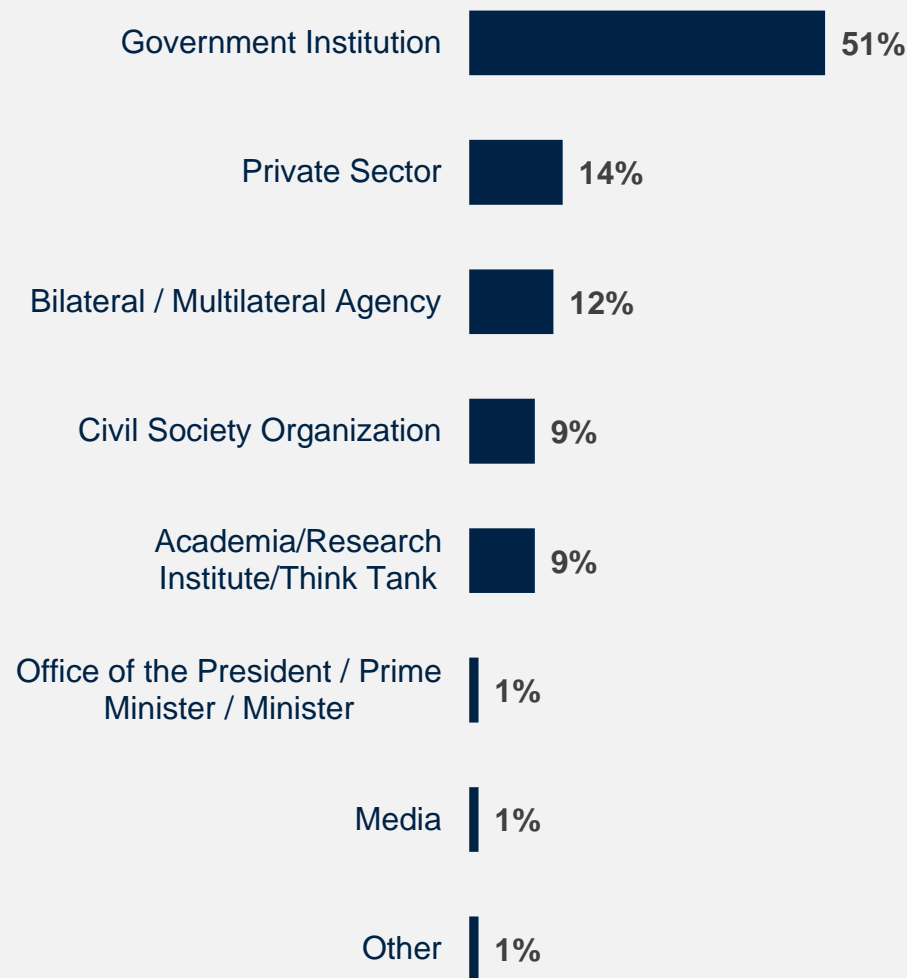
■ 74 participants (29% response rate)

- 49% currently collaborate with the WBG

■ Compared to FY17 Country Survey

- 107 participants (24% response rate)
- Most respondents received and completed the questionnaire online; a small number received the questionnaire via courier and returned it accordingly.
- 36% collaborated with the WBG

Click [here](#) for details of the Sample Demographics and Methodology



Note: There were no respondents from the office of a parliamentarian and the local government office.



Which of the following best describes your current affiliation?
(Select only 1 response) (Percentage of Respondents, N=74)

Overall Context



WORLD BANK GROUP

Familiarity with the World Bank has Improved

- **Year comparison:** Respondents in this year's Country Survey reported significantly higher levels of familiarity with the WBG compared to FY17:

Mean familiarity: **FY23 = 6.5**

FY17 = 4.4

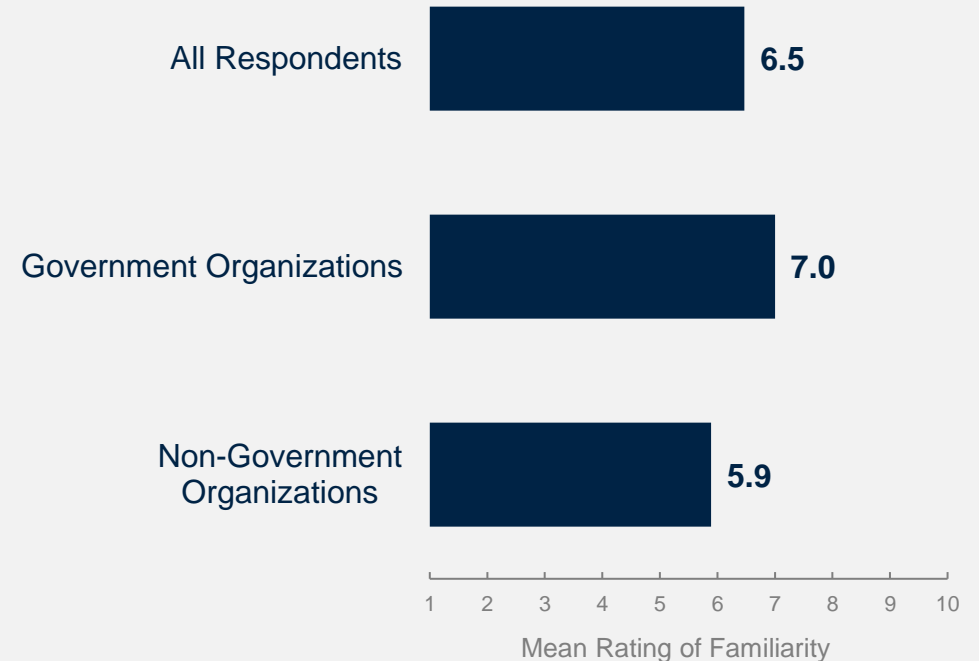
- **Collaboration with the WBG:** Respondents who collaborate with the WBG reported significantly higher levels of familiarity with the institution's work:

Mean familiarity: **Collaborate with WBG = 7.2**

Do not collaborate = 5.8

- **Stakeholder Analysis:** Respondents from government organizations reported slightly higher levels of familiarity (mean = 7.0), though not statistically significant.

*Note: **Government Organizations** respondents included respondents from the Office of the President, Prime Minister, Minister, and government institutions; **Non-government Organizations** respondents included respondents from bilateral or multilateral agencies, civil society organizations, the private sector, academia, the media, and others.*



The World Bank Group is Among the Most Trusted Institutions in Algeria

The United Nations (UN) and Algeria's Central Bank were the top trusted institutions (mean = 7.3 for both) followed closely by the national government and the WBG (mean = 7.2 for both). In contrast, youth organizations and media were the least trusted among the institutions studied (mean = 5.7 and 5.0, respectively).

- **Stakeholder Analysis:** Respondents from **government organizations** reported significantly higher levels of trust in many institutions and organizations compared to respondents from **non-government organizations**. Trust in the private sector, civil society, and youth organizations was on par in both stakeholder groups.



Overall Attitudes toward the World Bank Group

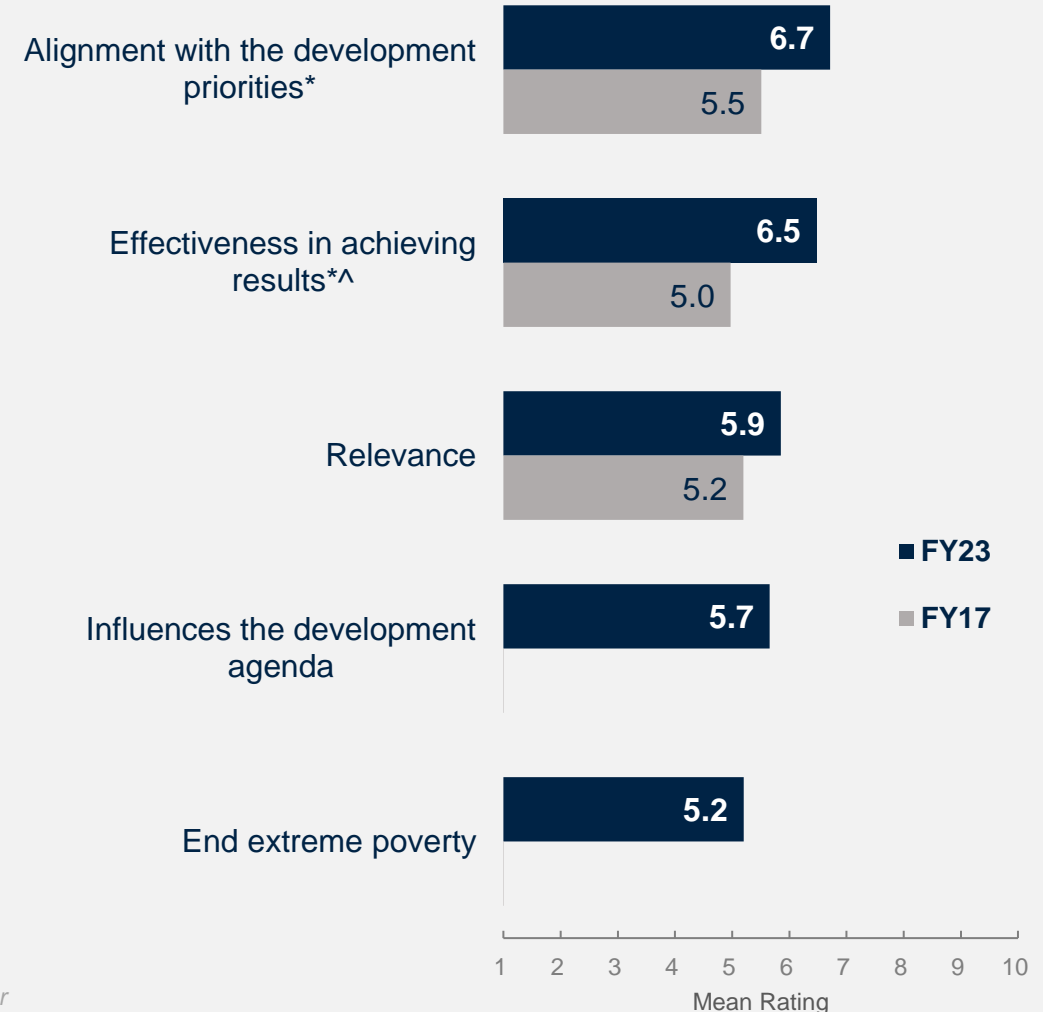


WORLD BANK GROUP

WBG's Alignment with the Development Priorities and Effectiveness in Achieving Results Improved

In FY23, respondents' perception of WBG's **alignment** with the country's development priorities and its **effectiveness** in achieving development results in Algeria significantly improved compared to FY17.

Perceptions of the WBG's **relevance** have also improved, although not significantly.



The WBG's work is aligned with what I consider the development priorities for Algeria.

Scale: 1 Strongly disagree – 10 Strongly agree

How effective has the WBG been in achieving development results in Algeria?

Scale: 1 Not effective at all – 10 Very effective

The WBG currently plays a relevant role in development in Algeria.

Scale: 1 Strongly disagree – 10 Strongly agree

To what extent does the WBG influence the development agenda in Algeria?

Scale: 1 To no degree at all – 10 To a very significant degree

The World Bank Group's work helps end extreme poverty in Algeria.

Scale: 1 Strongly disagree – 10 Strongly agree

^Compared to a mean score of the two questions asked in FY17: "Overall, please rate your impression of the WBG's effectiveness in Algeria."

Scale: 1 Not effective at all – 10 Very effective; To what extent does the WBG's work help to achieve development results in Algeria?

Scale: 1 To no degree at all – 10 To a very significant degree



Respondents from Government Organizations Hold more Positive Views of the WBG's Work

Respondents from **government organizations** have positive perceptions of the WBG and its work while **non-government organizations** tend to be more critical. Differences in the ratings of trust, effectiveness in achieving development results, and relevance were statistically significant between the two groups.



To what extent do you trust the WBG to do what is right?

Scale: 1 To no degree at all – 10 To a very significant degree

How effective has the WBG been in achieving development results in Algeria?

Scale: 1 Not effective at all – 10 Very effective

The WBG's work is aligned with what I consider the development priorities for Algeria.

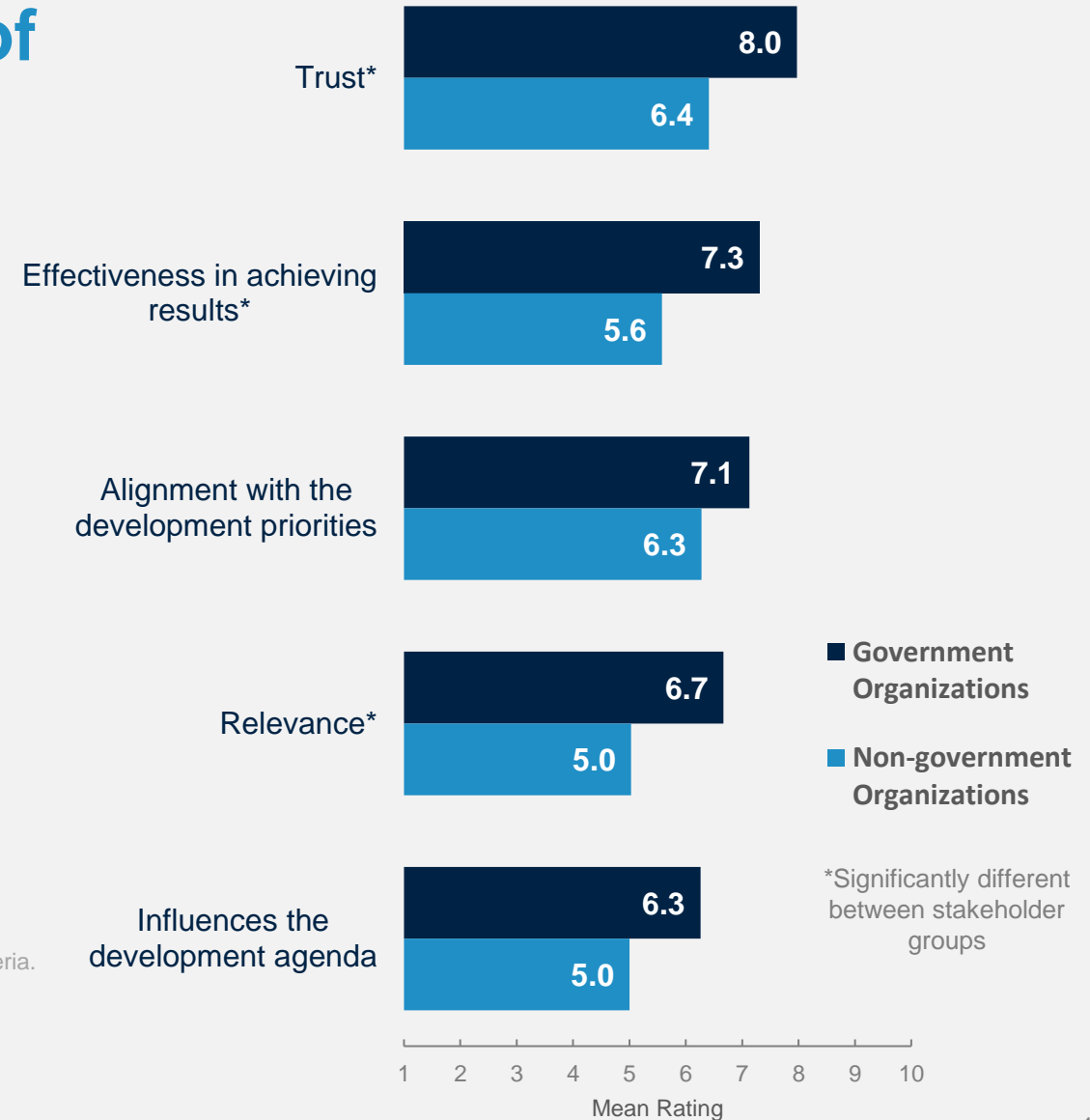
Scale: 1 Strongly disagree – 10 Strongly agree

The WBG currently plays a relevant role in the development in Algeria

Scale: 1 Strongly disagree – 10 Strongly agree

To what extent does the WBG influence the development agenda in Algeria?

Scale: 1 To no degree at all – 10 To a very significant degree



Ratings for Most Indicator Questions Have Increased

Year comparison: Respondents in this year's survey reported significantly higher ratings for several indicator questions compared to FY17 (please see the chart on the right).

Collaboration: In this year's survey, 49% of respondents indicated that they collaborated with the WBG as opposed to 36% in FY17. Because respondents who collaborate with the WBG tend to rate it more positively, analyses were conducted comparing collaborators and non-collaborators in FY23 and FY17. Respondents who collaborated with the WBG tended to give similar scores in both FY23 and FY17 (means across all questions=6.6 and 6.4, respectively); however, respondents who did not collaborate gave higher ratings in FY23 compared to FY17 (means across all questions =6.1 and 4.8, respectively). **Thus, an increase in this year's ratings can be partially attributed to more positive perceptions among non-collaborators.**

Stakeholder analysis: Respondents from government organizations (mean = 7.2) had significantly higher mean ratings of the aggregated responses to the twelve COS indicator questions while respondents from non-government organizations had lower mean ratings (mean = 5.6).



*significantly different between years



World Bank Group's Work and Engagement on the Ground



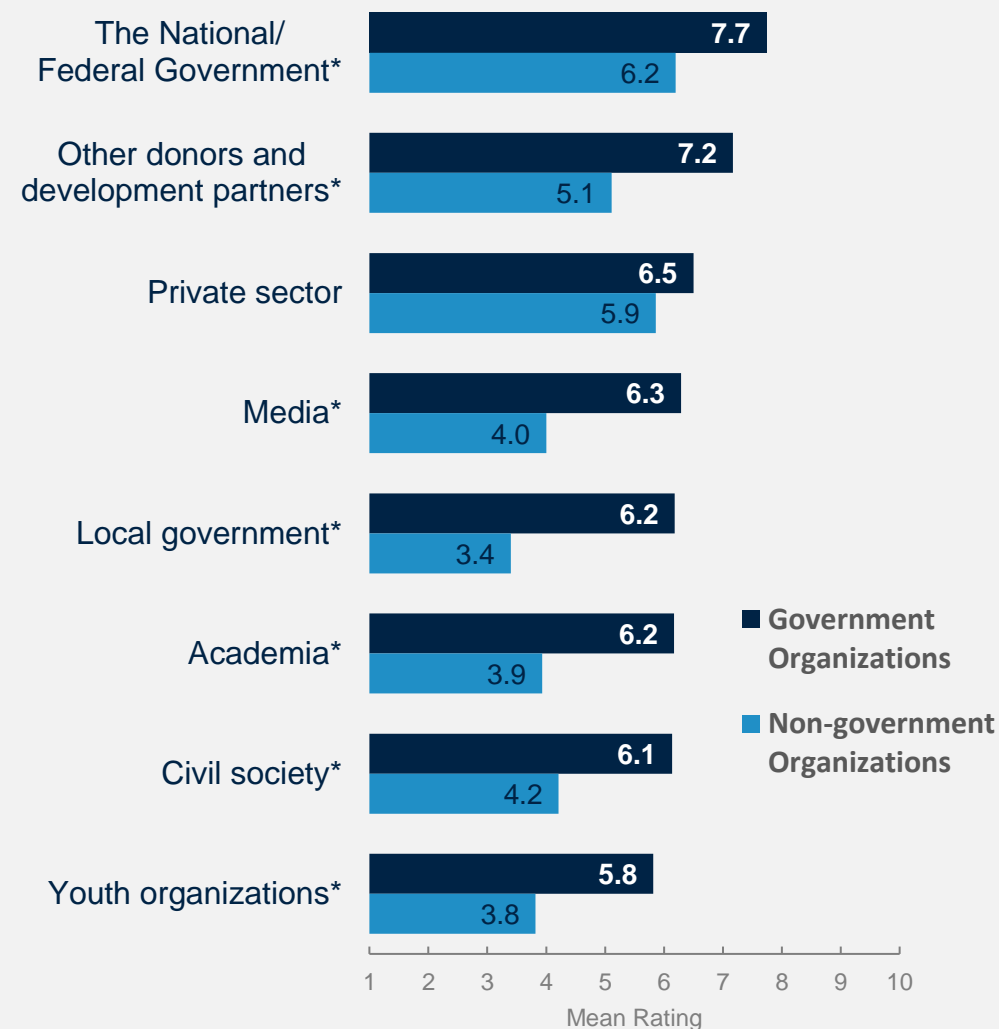
WORLD BANK GROUP

WBG Continues to be an Effective Development Partner

The WBG's collaboration with the **national / federal government** received the highest ratings from respondents (mean = 7.0).

There were very significant differences in perceptions of the WBG's collaboration among government and non-government stakeholder groups. Respondents from government organizations reported significantly higher ratings for the WBG as an effective development partner in Algeria in terms of collaborating with most stakeholder groups (except for the private sector) compared to respondents from non-government organizations.

- Notably, respondents from non-government organizations expressed particularly low ratings for the WBG's collaboration with **local governments** (mean=3.4).



*Significantly different between stakeholder groups



Communications and Outreach

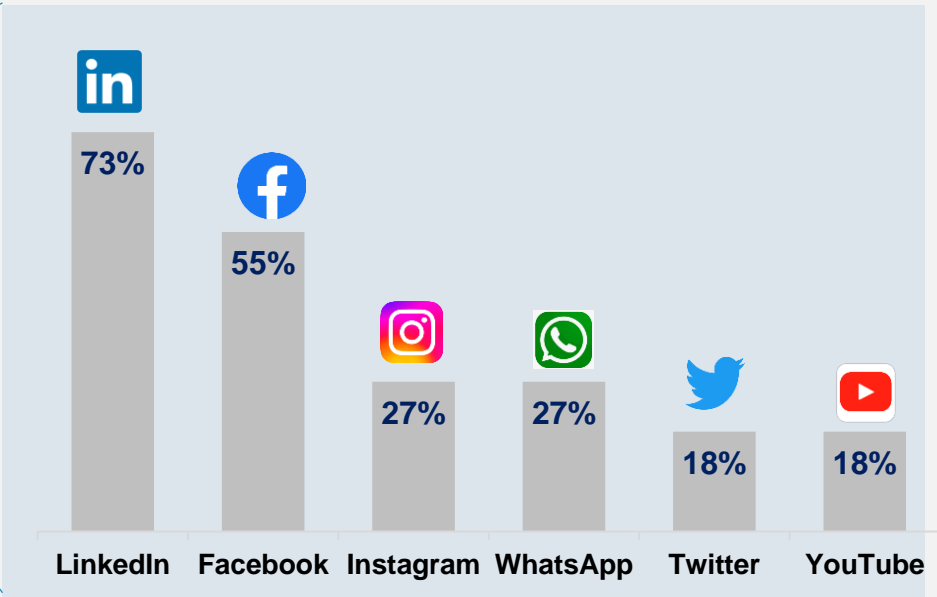


WORLD BANK GROUP

Two-thirds of Respondents Engaged with the WBG in the Last 30 Days

67% of respondents recalled hearing or seeing something about the WBG in the last 30 days.

Respondents reported seeing or hearing that information most often during **WBG events**, on the **WBG website**, or via **direct contact with the WBG staff**. Among those who selected “Social media”, respondents most commonly reported seeing something on LinkedIn and Facebook.



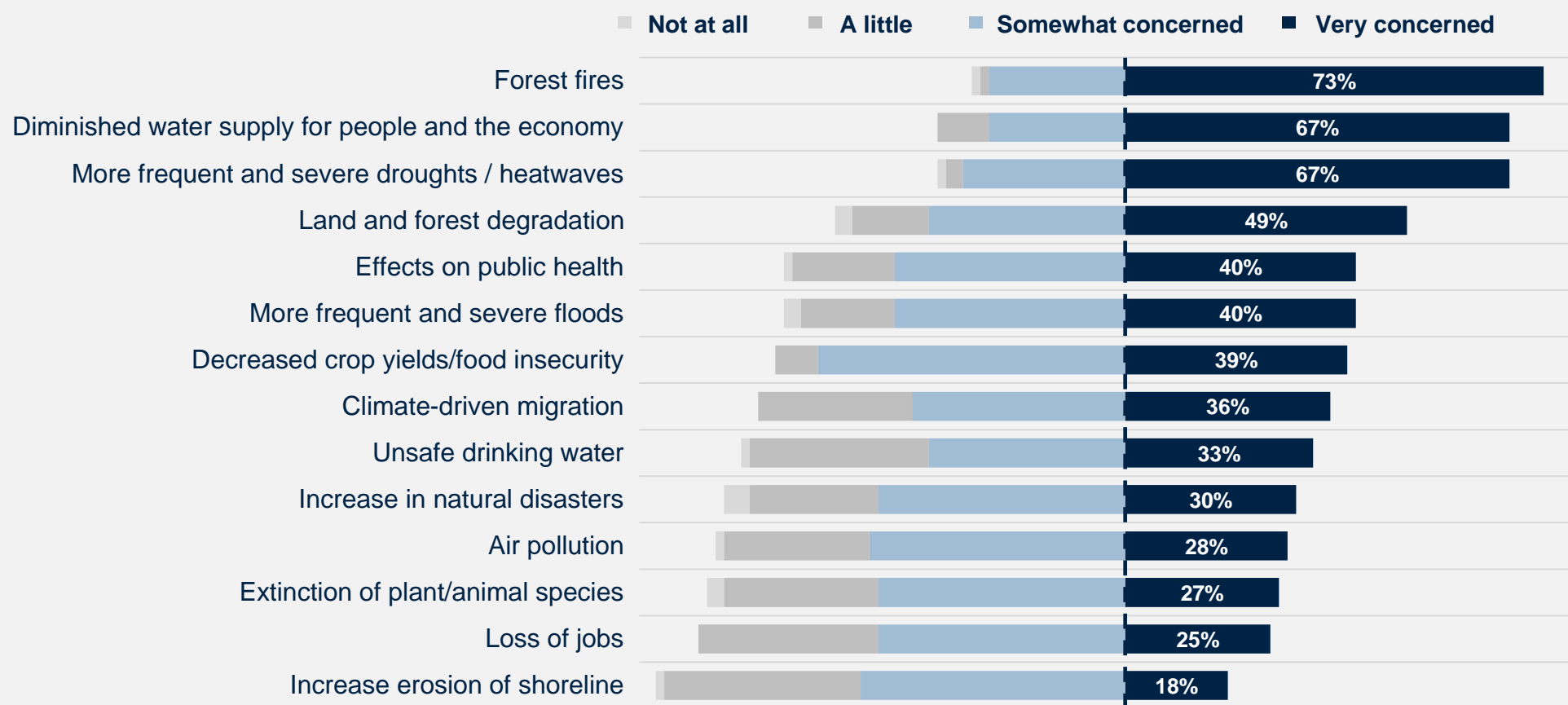
WBG Global Economic Forecasts and Climate Change were the Most Commonly Recalled Topics

Respondents most frequently recalled WBG's **global economic forecasts** and its work or research on **climate change**.



Climate Change Communications can be More Impactful when Related to Stakeholders' Top Concern: Forest Fires

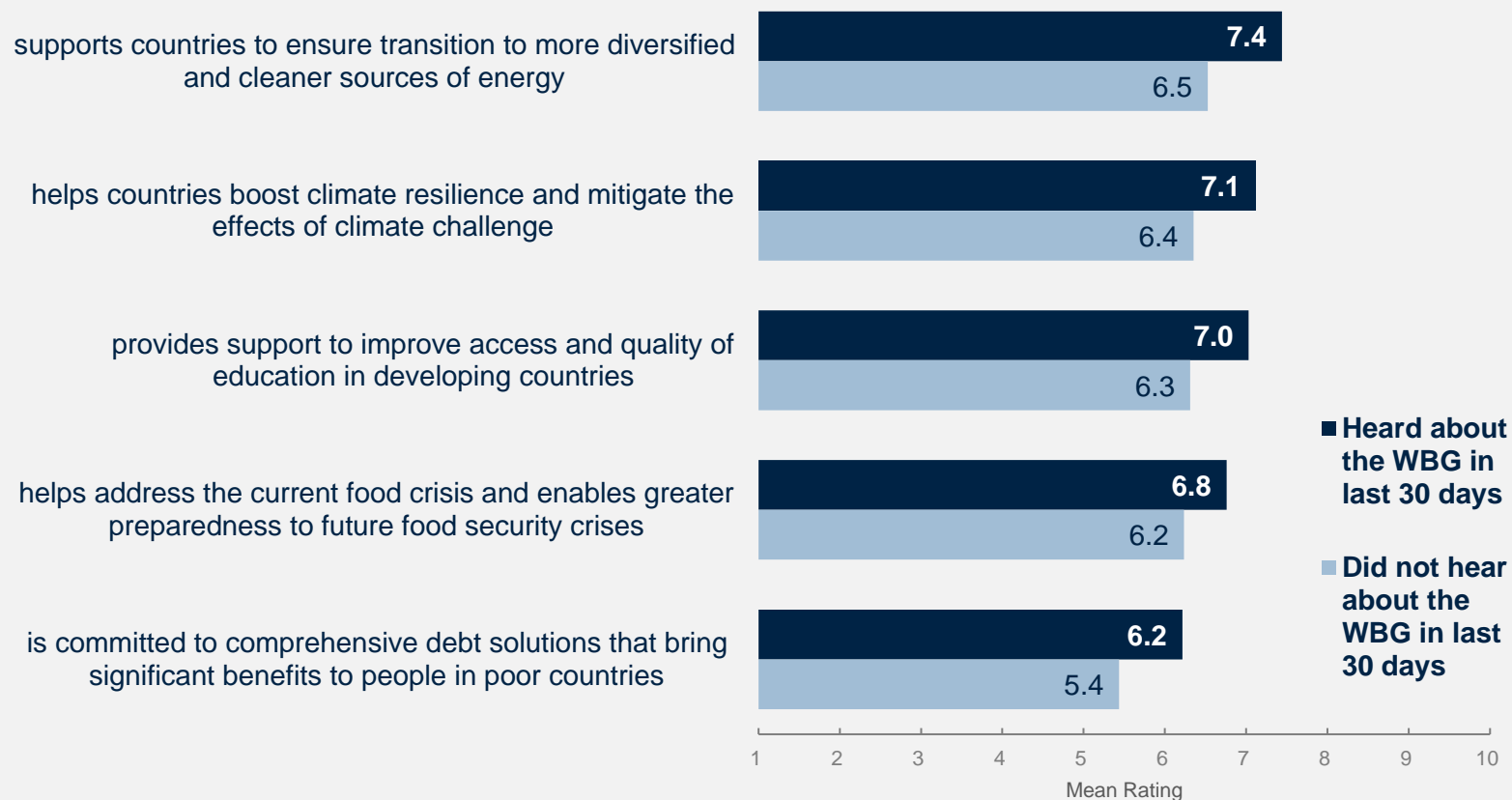
Over 7 in 10 respondents were very concerned about **forest fires** when it comes to the potential impacts of climate change in Algeria. **Diminished water supply for people and the economy** and **more frequent and severe droughts / heatwaves** were also of great concern. These key areas of concern should be taken into consideration to make communications about climate change more impactful in Algeria.



WBG's Energy Transition Support Received the High Agreement Rating

The WBG supports countries to ensure the transition to more **diversified and cleaner sources of energy** received the highest agreement ratings (mean = 7.1). Respondents who recalled seeing or hearing something about the WBG in the last 30 days reported relatively higher agreement ratings compared to those who did not recall seeing or hearing anything, although the difference was not statistically significant.

The World Bank Group...

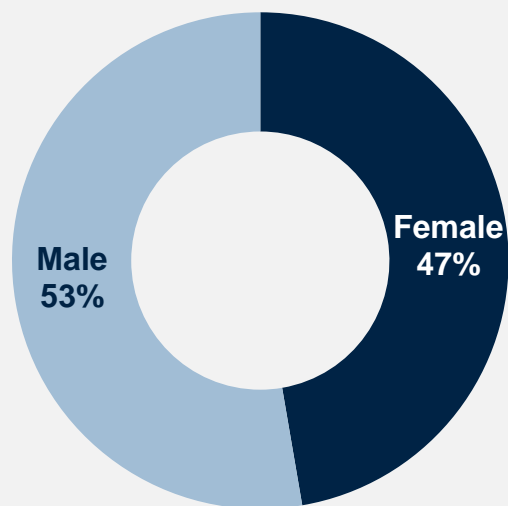


Sample Demographics and Detailed Methodology

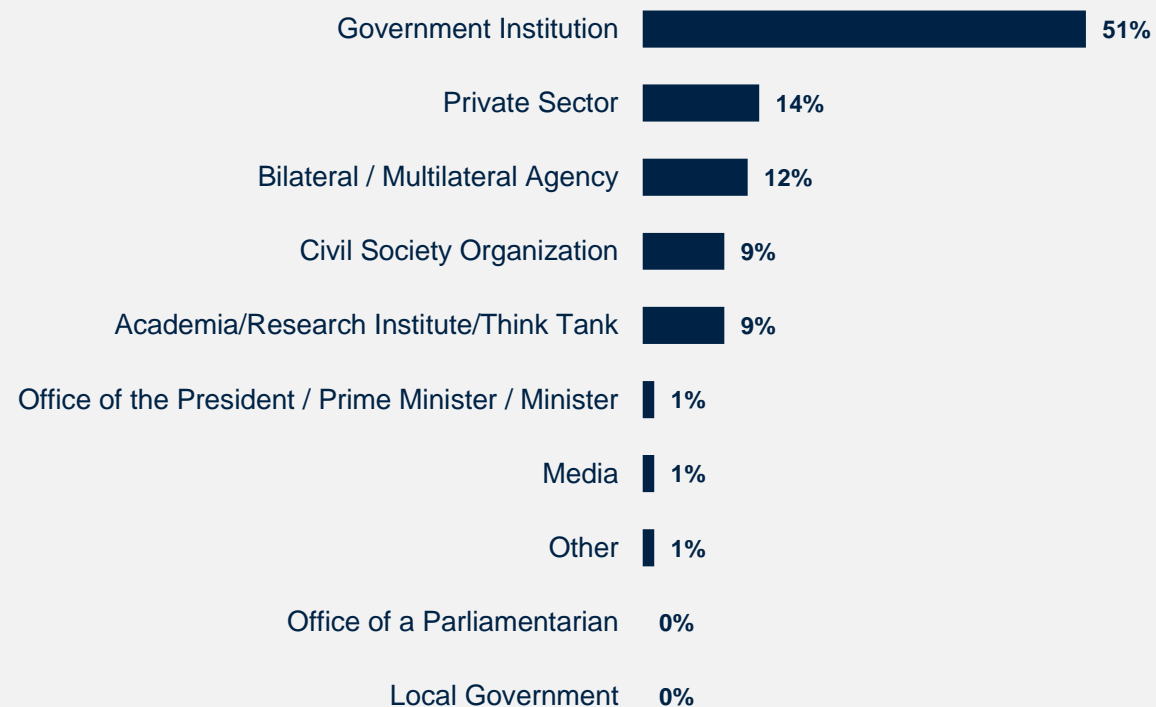


Sample Demographics

What's your gender?
(N=74)



Which of the following best describes your current affiliation?
(N=74)

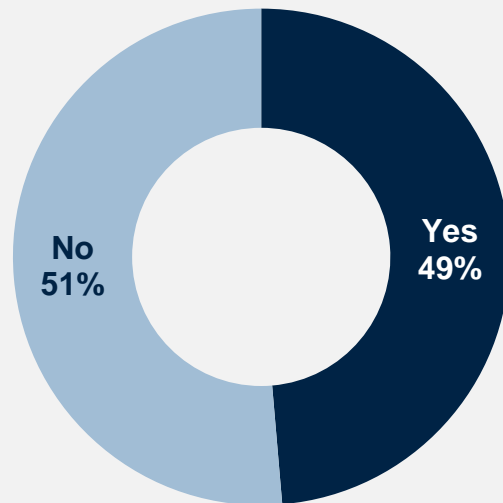


Note: There were no respondents from the office of a parliamentarian and the local government office.

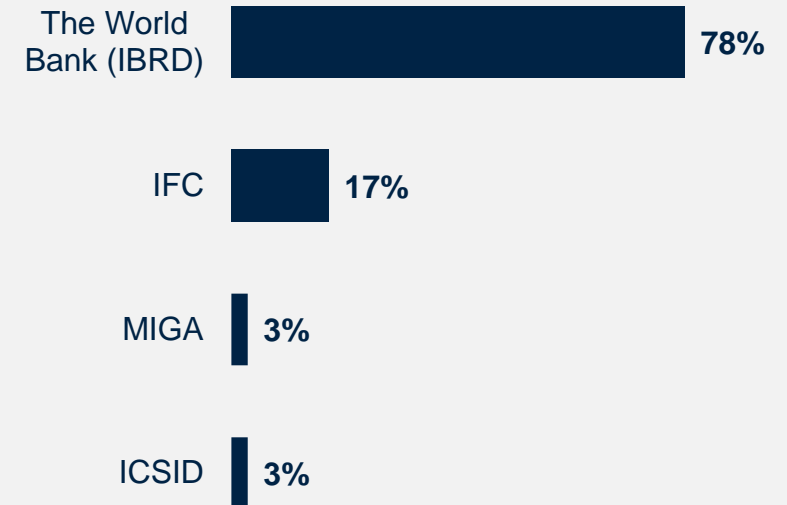


Sample Demographics

Currently, do you professionally collaborate/ work with the WBG in your country? (N=74)



Which of the following agencies of the WBG do you primarily collaborate/work with in Algeria? (N=36)



Detailed Methodology

From **May 2023** to **September 2023**, a total of **258** stakeholders of the WBG in Algeria were invited to provide their opinions about the WBG's work in the country by participating in a Country Opinion Survey (COS). Participants were drawn from the Office of the President, Prime Minister, Minister, Office of a Parliamentarian (National Assembly, Legislative body), Government Institutions, Local Governments, Bilateral/ Multilateral Agencies, Private Sector, Civil Society, Academia, and the Media.

A total of **74 stakeholders participated in the survey (29% response rate)**. Respondents completed the questionnaire via an online platform. The results of this year's survey were compared to the **FY17 COS Survey with a response rate of 24% (N=107)**.

Comparing responses across years reflects changes in attitudes over time, but also changes in respondent samples, methodology, and the survey instrument itself. To reduce the influence of the latter factor, only those questions with similar response scales/options were analyzed. Additionally, this year, the COS project utilized the Pulse Survey format, which is a shorter version conducted online by the COS team. The list of respondents was provided solely by the country team, which indicates a shift in the stakeholder composition compared to FY17. Thus, this year's survey saw an increased outreach to and response from government stakeholders and stakeholders from bilateral and multilateral agencies, but a decrease in civil society, academia, and media. These differences in stakeholder composition between the two years should be considered when interpreting the results of the past-year comparison analyses.

Key statistically significant findings (tested at the research standard of $p < .05$) are noted throughout the report.

Breakdowns for individual questions by stakeholder group can be found in the "Algeria COS FY23 Appendices with data breakdowns.xlsx" file published in the WBG Microdata Library, along with the survey microdata and this report.

Percentage of Respondents	FY 2017	FY 2023
Government Principals: Office of the President, Prime Minister, Minister; Office of a Parliamentarian (National Assembly, Legislative body)	3%	1%
Government Institutions: Employee of a Ministry, Department, Project Implementation Unit, Independent Government Institution, Judiciary, State-Owned Enterprise	19%	51%
Local Government	0%	0%
Bilateral/Multilateral Agency: Embassy, Development Organization, Development Bank, UN Agency	5%	12%
Civil Society: NGOs, Community-Based Organization, Private Foundation, Professional / Trade Association, Faith-Based Group, Youth Group	19%	9%
Private Sector: Private Company, Financial Sector Organization, Private Bank	14%	14%
Academia/Research Institute/Think Tank	18%	9%
Media	16%	1%
Other	7%	1%
Total Number of Respondents	102	74

Indicator Questions

A1_3. To what extent do you trust the World Bank Group to do what is right? Scale: 1-10 (1: To no degree at all – 10: To a very significant degree)

A2. How effective has the World Bank Group been in achieving development results in Algeria?

A3. The World Bank Group currently plays a relevant role in development in Algeria, Scale: 1-10 (1: Strongly disagree – 10: Strongly agree)

A4. The World Bank Group's work is aligned with what I consider the development priorities for Algeria, Scale: 1-10 (1: Strongly disagree – 10: Strongly agree)

A6. To what extent does the World Bank Group influence the development agenda in Algeria? Scale: 1-10 (1: To no degree at all – 10: To a very significant degree)

A7. How significant a contribution do you believe the World Bank Group's knowledge work and activities make to development results in your country?
Scale: 1-10 (1: Not significant at all – 10: Very significant)

To what extent is the World Bank Group an effective development partner in Algeria, in terms of each of the following? – Scale: 1-10 (1: To no degree at all – 10: To a very significant degree)

B1. Responsiveness to needs, **B2.** Access to WBG staff and experts,

To what extent is the WBG an effective development partner in Algeria, in terms of collaborating with the following groups: – Scale: 1-10 (1: To no degree at all – 10: To a very significant degree)

B3. Collaboration with the national government

B4. Collaboration with the private sector

B5. Collaboration with civil society

B6. Collaboration with other donor and development partners

Note: Corporate Score questions are highlighted in **RED**





Country Opinion Surveys

Thank you

*For more information about this report
or the Country Opinion Survey program,
please contact:*

Svetlana Markova

smarkova@worldbankgroup.org

