

Labour force survey

September 2001

Co-operation between Statistics South Africa (Stats SA), the citizens of the country, the private sector and government institutions is essential for a successful statistical system. Without continued co-operation and goodwill, the timely release of relevant and reliable official statistics will not be possible.

Embargo: 11:30
Date: 26 March 2002

Stats SA publishes approximately three hundred different releases each year. It is not economically viable to produce them in more than one of South Africa's eleven official languages. Since the releases are used extensively, not only locally, but also by international economic and social-scientific communities, Stats SA releases are published in English only.

Published by Statistics South Africa, Private Bag X44, Pretoria 0001

© Statistics South Africa, 2002

Users may apply or process this data, provided Statistics South Africa (Stats SA) is acknowledged as the original source of the data; that it is specified that the application an/or analysis is the result of the user's independent processing of the data; and that neither the basic data nor any reprocessed version or application thereof may be sold or offered for sale in any form whatsoever without prior permission from Stats SA.

Stats SA Library Cataloguing-in-Publication (CIP) Data

Labour Force Survey September 2001/ Statistics South Africa. Pretoria: Statistics South Africa, 2001

xiv 77 p.

Biannually, No.1

1. Labour supply – Statistics
 2. Labour supply (South Africa)
 3. Unemployment (South Africa)
 4. Informal sector (Economics) – South Africa
 5. Formal sector (Economics) – South Africa
- I. Statistics South Africa
II. Series
(LCSH 16)

A complete set of Stats SA publications is available at Stats SA Library and the following libraries:

National Library of South Africa, Pretoria Division
National Library of South Africa, Cape Town Division
Library of Parliament, Cape Town
Bloemfontein Public Library
Natal Society Library, Pietermaritzburg
Johannesburg Public Library
Eastern Cape Library Services, King William's Town
Central Regional Library, Pietersburg
Central Reference Library, Nelspruit
Central Reference Collection, Kimberley
Central Reference Library, Mmabatho

Obtainable from: Publications, Statistics South Africa

Tel: (012) 310 8251

Fax: (012) 322 3374

(012) 310 8619

E-mail: publications@statssa.pwv.gov.za

CONTENTS

	Page
Introduction	i
The labour market in September 2001	i
Labour market changes	
<i>The main labour market trends</i>	ii
<i>Employment by sector</i>	iii
<i>Employment by industry</i>	v
<i>Unemployment in urban and non-urban areas</i>	vii
<i>Unemployment by province</i>	vii
<i>Unemployment by population group</i>	viii
<i>Unemployment by population group and sex</i>	viii
Employment in the formal and informal sectors	
<i>Formal and informal sector employment by industry</i>	ix
<i>Comparison of formal sector employment figures in the LFS and the SEE</i>	ix
<i>Comparison of formal sector employment by industry in the LFS and the SEE of September of 2001</i>	x
Labour market trends according to the expanded definition of unemployment	x
Notes	
1. <i>Official and expanded unemployment rates</i>	xii
2. <i>Sample design</i>	xii
3. <i>Coverage</i>	xii
4. <i>Weighting the LFS</i>	xii
5. <i>Symbols used in the tables that follow</i>	xii
6. <i>Comparability of results with other Stats SA data sources</i>	xii
7. <i>Urbanisation</i>	xiii
8. <i>Confidence intervals</i>	xiii
Definitions of terms	xiii
Tables	
1. Population	
1.1 By area, age, population group and sex	1
2. Population of working age	
2.1 By economic activity, population group and sex	3
2.2 By economic activity and sex	5
2.3 By economic activity and area	7
2.4 By population group, area, sex and labour market status	
2.4.1 Official definition of unemployment	9
2.4.2 Expanded definition of unemployment	10
2.5 By province, area, sex and labour market status	
2.5.1 Official definition of unemployment	11
2.5.2 Expanded definition of unemployment	13
2.6 By highest level of education, sex and labour market status	
2.6.1 Official definition of unemployment	
2.6.1.1 All population groups	15
2.6.1.2 African	16
2.6.1.3 Coloured	17
2.6.1.4 Indian/Asian	18
2.6.1.5 White	19

2.6.2	Expanded definition of unemployment	
2.6.2.1	All population groups	20
2.6.2.2	African	21
2.6.2.3	Coloured	22
2.6.2.4	Indian/Asian	23
2.6.2.5	White	24
2.7	By definition of unemployment, work-related skills training, sex and labour market status	25
3.	Workers (employers, employees and self-employed)	
3.1	By main industry and sector	26
3.2	By main occupation and sector	27
3.3	By population group, sex and sector	28
3.4	By main industry, population group and sex	
3.4.1	All sectors	29
3.4.2	Formal sector	30
3.4.3	Informal sector	31
3.5	By monthly income and sector	32
3.6	By highest level of education and sector	33
3.7	By highest level of education and monthly income	
3.7.1	All population groups	34
3.7.2	African	35
3.7.3	Coloured	36
3.7.4	Indian/Asian	37
3.7.5	White	38
3.8	With degrees, diplomas and certificates by field of study and monthly income	39
3.9	By main industry and monthly income	40
3.10	By main occupation and monthly income	41
3.11	By employment status	
3.11.1	By sector and sex	42
3.11.2	By sector, population group and sex	44
3.12	Conditions of work of employees	
3.12.1	By main industry and existence of written contract	45
3.12.2	By main industry and terms of employment	46
3.12.3	By main industry and paid leave status	47
3.12.4	By main industry and trade union membership	48
3.12.5	By main industry and provision for, or contribution towards, medical aid or health insurance	49
3.13	By main industry and provision for, or contribution towards, medical aid or health insurance	
3.13.1	Formal sector	50
3.13.2	Informal sector	51
3.14	By main industry and location of business	
3.14.1	Formal sector	52
3.14.2	Informal sector	53
3.15	By main industry and number of regular workers in the business	54
3.16	By main industry and whether the business is a registered company or close corporation	55
3.17	By main industry and deduction of UIF contributions	56
4.	The unemployed	
4.1	By area, age, population group and sex	
4.1.1	Official definition of unemployment	57
4.1.2	Expanded definition of unemployment	58
4.2	By duration of job seeking, age and whether they have worked before	59
4.3	Unemployed persons who have worked before by duration of unemployment and previous industry	
4.3.1	Official definition of unemployment	60
4.3.2	Expanded definition of unemployment	61
4.4	Unemployed persons who have worked before by duration of unemployment and previous occupation	
4.4.1	Official definition of unemployment	62
4.4.2	Expanded definition of unemployment	63
4.5	Unemployed persons who have worked before by duration of unemployment and age	64

4.6	Unemployed persons who have never worked, by duration of job seeking and age	65
4.7	By highest level of education, population group and sex	
4.7.1	Official definition of unemployment	66
4.7.2	Expanded definition of unemployment	67
4.8	Unemployed persons with degrees, diplomas and certificates by field of study and sex: Both definitions of unemployment	68
4.9	Unemployed and not economically active population by reason for not working and sex	
4.9.1	Official definition of unemployment	69
4.9.2	Expanded definition of unemployment	70
5.	Economic activities of the aged (66 years and above)	
5.1	By type of economic activity, if any, and sex	71
5.2	By type of economic activity, if any, and population group	73
5.3	Working aged by population group, sex and sector	75
5.4	Working aged by main industry and sex	76
5.5	Working aged by main occupation and sex	77

Data and metadata set

Labour force survey September 2001

The data and metadata set from the *Labour force survey September 2001* is available on CD-ROM at the following prices:

	Africa	Elsewhere
Students	R 500	R1 000
Academic researchers	R2 000	R4 000
Non-profit institutions	R2 000	R4 000
Consultants and researchers for profit	R4 000	R8 000
Institutions for profit	R4 000	R8 000

For more details, and to place orders, contact

**User Enquiries
Statistics South Africa
Private Bag X44
Pretoria
0001
South Africa**

**Tel: (012) 310-8600
Fax: (012) 310-8500
E-mail: info@statssa.pwv.gov.za
website: www.statssa.gov.za**

LABOUR FORCE SURVEY ROUND 4: SEPTEMBER 2001

This statistical release presents a selection of key findings and additional tables from Stats SA's fourth labour force survey (LFS), conducted in September 2001, which examines employment in both the formal and informal sectors of the country, and unemployment. The survey gathered detailed information on approximately 70 000 adults of working age (15-65 years) living in 30 000 dwelling units across the country. This release also compares employment and unemployment data in September 2001 with data from the previous rounds of the LFS (February and September 2000, and February 2001), and with the corresponding rounds of the survey of employment and earnings (SEE).

INTRODUCTION

The LFS is a twice-yearly rotating panel household survey, specifically designed to measure the dynamics of employment and unemployment in the country. It measures a variety of issues related to the labour market, including unemployment rates (official and expanded), according to standard definitions of the International Labour Organisation (ILO). *For these definitions see Note 1 below.*

Statistics South Africa is conducting experiments on using a rotating panel methodology to collect labour force statistics. A rotating panel sample involves visiting the same dwelling units on a number of occasions (in this instance, five at most), and after the panel is established, replacing a proportion of these dwelling units each round (in this instance 20%). New dwelling units are added to the sample to replace those that are taken out. The advantage of this type of design is that it offers the ability to see how the work situation of members of the same households change over time, while retaining the larger picture of the overall employment situation in the country. It also allows for both longitudinal and cross-sectional analysis.

The first pilot round of LFS fieldwork took place in February 2000, based on a probability sample of 10 000 dwelling units. The sample was increased to 30 000 dwelling units in September 2000. Both of these surveys were published as discussion documents. The third round took place in February 2001, using the same 30 000 dwelling units. The results of this round were published as official statistics. The present document gives the findings from the fourth round of the LFS, which took place in September 2001, when a new sample of 30 000 dwelling units were visited. This will enable us to compare panel and cross-sectional data and study the similarities and differences of the results obtained by using the different methods. Rotation of 20% of this sample has commenced with the fifth round currently being conducted (February/March 2002).

All the labour force survey results, at this stage, are based on a cross-sectional analysis. This round was based on a new sample altogether. A longitudinal analysis of the first three rounds of the survey is currently underway.

THE LABOUR MARKET IN SEPTEMBER 2001

In Table A, Stats SA gives the overall labour market trends for September 2001, based on the official definition of unemployment (*see Note 1 for this definition*). It looks at:

- the estimated total number of people in the age category 15-65 years (those of working age),
- the number of people in this age category who were not economically active (for example, full-time students, full-time homemakers, retired people and the disabled who are unable to work),
- those who were economically active (both the employed and the unemployed according to the official definition of unemployment),
- the labour market participation rate (the percentage of all people aged 15-65 years who are economically active), and
- the labour absorption rate (the percentage of all those aged 15-65 years who are actually employed) in September 2001.

The table shows that, in September 2001, there were an estimated 27,4 million people aged between 15 and 65 years. Among these people:

- 15,4 million were economically active, of whom
 - 10,8 million were employed, and
 - 4,5 million were unemployed.
- In addition, 12,0 million were not economically active, of whom
 - 4,9 million were full-time scholars,
 - 1,2 million were full-time homemakers,

- 1,2 million were disabled or chronically ill, hence unable to work,
- 0,8 million were either too young or too old to work, and
- 0,3 million were retired.

The remainder were not economically active for other reasons.

- The official unemployment rate is estimated to be 29,5%.

TABLE A: LABOUR MARKET TRENDS IN SEPTEMBER 2001 ACCORDING TO THE OFFICIAL DEFINITION OF UNEMPLOYMENT		
		(000s)
a	Total employed	10 833
b	Total unemployed (official definition)	4 525
c	Total economically active = a + b	15 358
d	Total not economically active	12 006
e	Total aged 15–65 years = c + d	27 365
f	Official unemployment rate = $b * 100 / c$	29,5%
g	Labour market participation rate = $c * 100 / e$	56,1%
h	Labour absorption rate = $a * 100 / e$	39,6%

LABOUR MARKET CHANGES

The main labour market trends

The statistics in Table B indicate that there were quite a number of changes in the labour market between February 2000 and September 2001. Some of these are significant, while others are not.

- The total **number of unemployed people** was estimated to be 4 240 000 in February 2001. We are 95% confident that the actual value of this estimate lies somewhere between 4 069 000 and 4 412 000. In September 2001, the total number of unemployed people was estimated to be 4 525 000. This number falls, within the 95% confidence limits range, between 4 343 000 and 4 707 000. Therefore the increase in the number of unemployed people between February 2001 and September 2001 is not statistically significant. It can be explained by sampling error.
- Taking sampling error into account, the total **number of people who were not economically active** was significantly higher in September 2001 than the three earlier rounds.
- Similarly, although there were no significant changes in the **number of employed people** between February 2000 and February 2001, a significant decrease is found in September 2001.
- The increase in the **unemployment rate** from 26,4% in February 2001 to 29,5 % in September 2001 is statistically significant. However, the drop in the rate from 26,7% in February 2000 to 25,8% in September 2000 and the slight increase to 26,4% in February 2001 were not statistically significant.
- The **labour market participation rate** decreased between February 2000 and September 2000, remained more or less the same between September 2000 (58,7%) and February 2001 (59,3%), then decreased significantly in September 2001 (56,1%).
- The **labour absorption rate** showed a similar picture.

In summary, the number of employed has decreased, while the number of unemployed has remained more or less static. The total number of economically active has decreased slightly, while the number who are not economically active has increased significantly. The above suggests that there was a significant change in the labour market picture, overall, between February 2001 and September 2001. The reasons for this change will become clear as we probe further into the issue.

TABLE B: LFS COMPARISON FEBRUARY 2000, SEPTEMBER 2000, FEBRUARY 2001 AND SEPTEMBER 2001 LABOUR MARKET MEASUREMENTS USING THE OFFICIAL DEFINITION OF UNEMPLOYMENT WITHIN 95% CONFIDENCE LIMITS					
Variable		Lower limit (000s)	Estimate (000s)	Upper limit (000s)	Statistical significance of Sep 2001 result compared to this result
a	Total employed = a				
	Feb 2000	11 491	11 880	12 268	Significant
	Sep 2000	11 446	11 712	11 979	Significant
	Feb 2001	11 563	11 837	12 111	Significant
	Sep 2001	10 602	10 833	11 063	
b	Total unemployed (official definition) = b				
	Feb 2000	4 085	4 333	4 581	Not significant
	Sep 2000	3 910	4 082	4 254	Significant
	Feb 2001	4 069	4 240	4 412	Not significant
	Sep 2001	4 343	4 525	4 707	
c	Total economically active = a + b = c				
	Feb 2000	15 730	16 213	16 696	Significant
	Sep 2000	15 453	15 794	16 135	Not significant
	Feb 2001	15 728	16 077	16 427	Not significant
	Sep 2001	15 057	15 358	15 659	
d	Total not economically active = d				
	Feb 2000	9 798	10 242	10 685	Significant
	Sep 2000	10 815	11 100	11 386	Significant
	Feb 2001	10 763	11 044	11 324	Significant
	Sep 2001	11 706	12 006	12 307	
e	Total aged 15–65 years = c + d = e				
	Feb 2000	25 705	26 454	27 203	Not significant
	Sep 2000	26 385	26 894	27 404	Not significant
	Feb 2001	26 596	27 121	27 646	Not significant
	Sep 2001	26 878	27 365	27 851	
f	Official unemployment rate = b * 100 / c = f				
	Feb 2000	25,5%	26,7%	27,9%	Significant
	Sep 2000	25,0%	25,8%	26,7%	Significant
	Feb 2001	25,6%	26,4%	27,2%	Significant
	Sep 2001	28,8%	29,5%	30,3%	
g	Labour market participation rate = c * 100 / e = g				
	Feb 2000	60,2%	61,3%	62,3%	Significant
	Sep 2000	58,0%	58,7%	59,4%	Significant
	Feb 2001	58,6%	59,3%	60,0%	Significant
	Sep 2001	55,4%	56,1%	56,8%	
h	Labour absorption rate = a * 100 / e = h				
	Feb 2000	43,8%	44,9%	46,0%	Significant
	Sep 2000	42,8%	43,5%	44,3%	Significant
	Feb 2001	42,9%	43,6%	44,4%	Significant
	Sep 2001	38,8%	39,6%	40,3%	

Employment by sector

When comparing employment trends by sector between the four surveys conducted so far, Table C indicates the following.

- The total number of employed people was stable between February and September 2000, and September 2000 and February 2001, at approximately 11,8 million. In September 2001 however, there was a significant decrease of approximately a million compared to the results of the previous surveys.
- The total number of people employed in the formal sector, excluding agriculture, over this time period, was stable, at approximately 6,9 million.
- Employment in commercial agriculture also remained stable, at approximately 0,7 million.

- In subsistence or small-scale farming, however, there was a significant decrease. In February 2000, there were 1,5 million people in subsistence farming, decreasing to 1,0 million in September 2000, 0,7 million in February 2001 and then 0,4 million in September 2001. Seasonal variation may account for the difference between February and September in both 2000 and 2001. The floods in early 2001, which affected the more rural provinces such as Limpopo (formerly Northern Province) and Mpumalanga, may explain the smaller number in agriculture in February 2001. Self-classification may also have had some influence on the results, as for the informal sector in general (see the next paragraph).
- In the informal sector, the difference in the number of those working over the six-month time period between February 2001 and September 2001 is statistically significant, indicating a decrease of approximately 0,8 million jobs. There are no statistically significant differences between the figure of September 2001 and those of February and September 2000. Of the four surveys, it is the February 2001 figure that stands out. Self-classification may have had some influence on these results. In February 2001 more probing questions about self-employment and small businesses were asked in a follow-on survey, which may have led to a larger number of respondents than usual classifying themselves as employed. In September 2001 a new sample was drawn, and once again respondents may have classified themselves as not economically active rather than as employed in the informal sector. Moreover the ease with which people may enter or leave the informal sector is notable, relative to formal sector opportunities and other circumstances. A fluctuating picture is therefore not necessarily surprising.
- In domestic service, there has been a gradual, but non-significant decline in employment opportunities over the time period.

TABLE C: LFS COMPARISON FEBRUARY 2000, SEPTEMBER 2000, FEBRUARY 2001 AND SEPTEMBER 2001 SECTOR IN WHICH EMPLOYED PEOPLE WORK ESTIMATES WITHIN 95% CONFIDENCE LIMITS					
Variable		Lower limit (000s)	Estimate (000s)	Upper limit (000s)	Statistical significance of Sep 2001 result compared to this result
Total employed					
	Feb 2000	11 491	11 880	12 268	Significant
	Sep 2000	11 446	11 712	11 979	Significant
	Feb 2001	11 563	11 837	12 111	Significant
	Sep 2001	10 602	10 833	11 063	
Among the employed					
Employed in the formal sector (excluding agriculture)					
	Feb 2000	6 413	6 678	6 942	Not significant
	Sep 2000	6 647	6 842	7 036	Not significant
	Feb 2001	6 481	6 678	6 876	Not significant
	Sep 2001	6 682	6 873	7 064	
Employed in commercial agriculture					
	Feb 2000	662	757	852	Not significant
	Sep 2000	606	667	728	Not significant
	Feb 2001	636	699	761	Not significant
	Sep 2001	611	666	720	
Employed in subsistence or small-scale agriculture					
	Feb 2000	1 350	1 508	1 667	Significant
	Sep 2000	890	965	1 039	Significant
	Feb 2001	585	653	722	Significant
	Sep 2001	326	359	394	
Employed in the informal sector					
	Feb 2000	1 704	1 821	1 936	Not significant
	Sep 2000	1 861	1 933	2 006	Not significant
	Feb 2001	2 573	2 665	2 757	Significant
	Sep 2001	1 808	1 873	1 938	
Employed in domestic service					
	Feb 2000	940	1 001	1 061	Not significant
	Sep 2000	952	999	1 046	Not significant
	Feb 2001	870	914	959	Not significant
	Sep 2001	880	916	952	

In summary, both in the informal agricultural sector and the informal sector as a whole, employment trends tend to vary as a result of seasonal and other factors. The informal sector offers less secure, possibly short-term employment opportunities. People within the sector may be leaving it and re-entering it at different rates at various times of the year. Those in the sector who are perhaps having a downturn and are not working are likely

to define themselves as not economically active, rather than as unemployed. In addition, unless carefully probed, people may not regard subsistence agriculture and informal economic activity as work. The picture on informal work is thus an unstable one.

Employment by industry

Figure 1 and Table D show that

- Employment in mining, manufacturing, electricity, construction and transport, and in community services, has remained more or less stable over the time period February 2000 to September 2001.
- On the other hand, employment in agriculture has decreased over this time period, particularly subsistence farming.
- Whilst between September 2000 and February 2001, employment in trading industries increased significantly, a significant decrease is found between February 2001 and September 2001, making February 2001 stand out, with the highest figure of approximately 2,9 million. A large number of trading businesses are informal.
- Between February 2000 and September 2001, employment in business service industries (finance) also increased significantly.
- Employment in private households decreased significantly between September 2000 and September 2001.

Figure 1 Employment by industry: February 2000, September 2000, February 2001 and September 2001

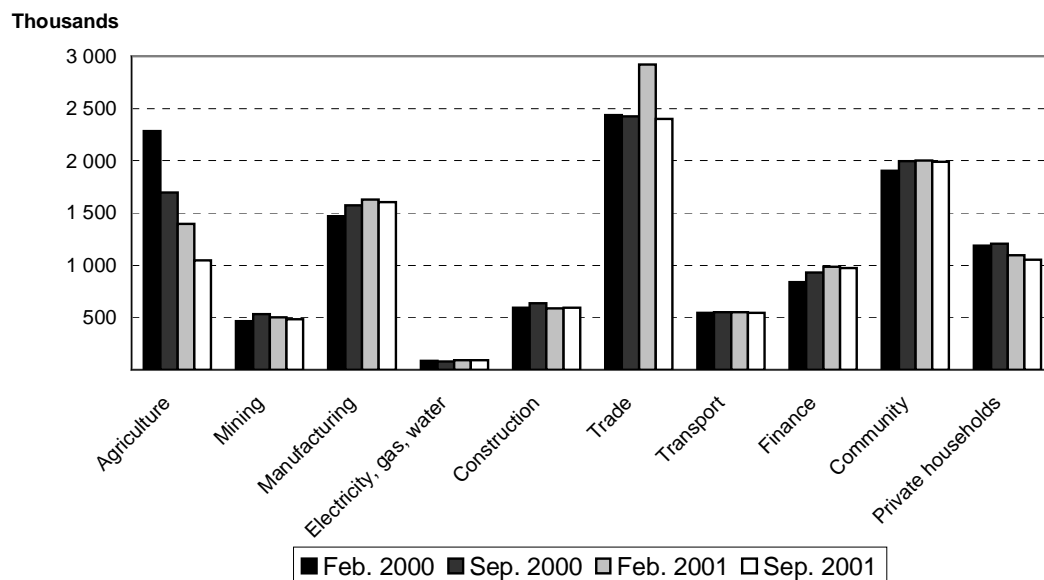


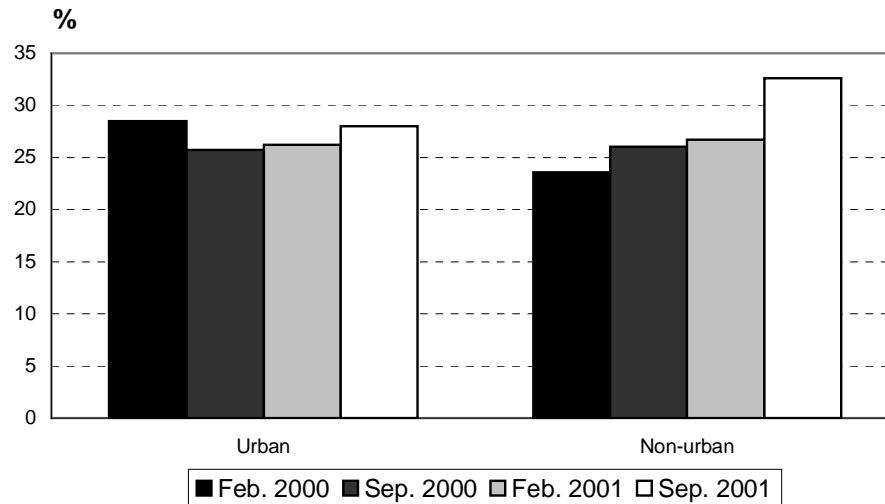
TABLE D: LFS COMPARISON, FEBRUARY 2000, SEPTEMBER 2000, FEBRUARY 2001 AND SEPTEMBER 2001 EMPLOYMENT BY INDUSTRY WITHIN 95% CONFIDENCE LIMITS						
Variable		Lower limit (000s)	Estimate (000s)	%	Upper limit (000s)	Statistical significance of Sep 2001 result compared to this result
Total employed						
	Feb 2000	11 491	11 880	100,0	12 268	Significant
	Sep 2000	11 446	11 712	100,0	11 979	Significant
	Feb 2001	11 563	11 837	100,0	12 111	Significant
	Sep 2001	10 602	10 833	100,0	11 063	
Employed by industry						
Agriculture						
	Feb 2000	2 102	2 285	19,2	2 468	Significant
	Sep 2000	1 593	1 694	14,5	1 795	Significant
	Feb 2001	1 296	1 394	11,8	1 493	Significant
	Sep 2001	981	1 051	9,7	1 121	
Mining						
	Feb 2000	393	467	3,9	542	Not significant
	Sep 2000	478	531	4,5	583	Not significant
	Feb 2001	455	504	4,3	553	Not significant
	Sep 2001	437	487	4,5	537	
Manufacturing						
	Feb 2000	1 380	1 469	12,4	1 559	Not significant
	Sep 2000	1 506	1 576	13,5	1 645	Not significant
	Feb 2001	1 551	1 627	13,7	1 702	Not significant
	Sep 2001	1 540	1 605	14,8	1 671	
Electricity						
	Feb 2000	73	88	0,7	102	Not significant
	Sep 2000	73	82	0,7	91	Not significant
	Feb 2001	83	93	0,8	103	Not significant
	Sep 2001	83	95	0,9	106	
Construction						
	Feb 2000	550	596	5,0	643	Not significant
	Sep 2000	607	639	5,5	670	Not significant
	Feb 2001	561	589	5,0	617	Not significant
	Sep 2001	566	594	5,5	622	
Trade						
	Feb 2000	2 300	2 434	20,5	2 569	Not significant
	Sep 2000	2 340	2 426	20,7	2 513	Not significant
	Feb 2001	2 824	2 916	24,6	3 008	Significant
	Sep 2001	2 317	2 397	22,1	2 478	
Transport						
	Feb 2000	509	547	4,6	585	Not significant
	Sep 2000	523	551	4,7	578	Not significant
	Feb 2001	525	554	4,7	583	Not significant
	Sep 2001	514	543	5,0	571	
Business services						
	Feb 2000	779	837	7,0	896	Significant
	Sep 2000	875	928	7,9	981	Not significant
	Feb 2001	929	985	8,3	1 042	Not significant
	Sep 2001	920	975	9,0	1 030	
Community services						
	Feb 2000	1 793	1 900	16,0	2 007	Not significant
	Sep 2000	1 912	1 994	17,0	2 076	Not significant
	Feb 2001	1 920	2 000	16,9	2 079	Not significant
	Sep 2001	1 908	1 988	18,3	2 068	
Private households						
	Feb 2000	1 007	1 187	10,0	1 267	Not significant
	Sep 2000	1 149	1 205	10,3	1 260	Significant
	Feb 2001	1 043	1 099	9,3	1 155	Not significant
	Sep 2001	1 014	1 055	9,7	1 096	

Totals include unspecified

Unemployment in urban and non-urban areas (official definition)

Figure 2 suggests that between February 2000 and September 2001 the unemployment rate increased in non-urban areas while it remained more or less stable in urban areas. The increase in non-urban areas could be due to the decreasing employment in trade and agriculture, which is noticeable in Figure 1 and Table D.

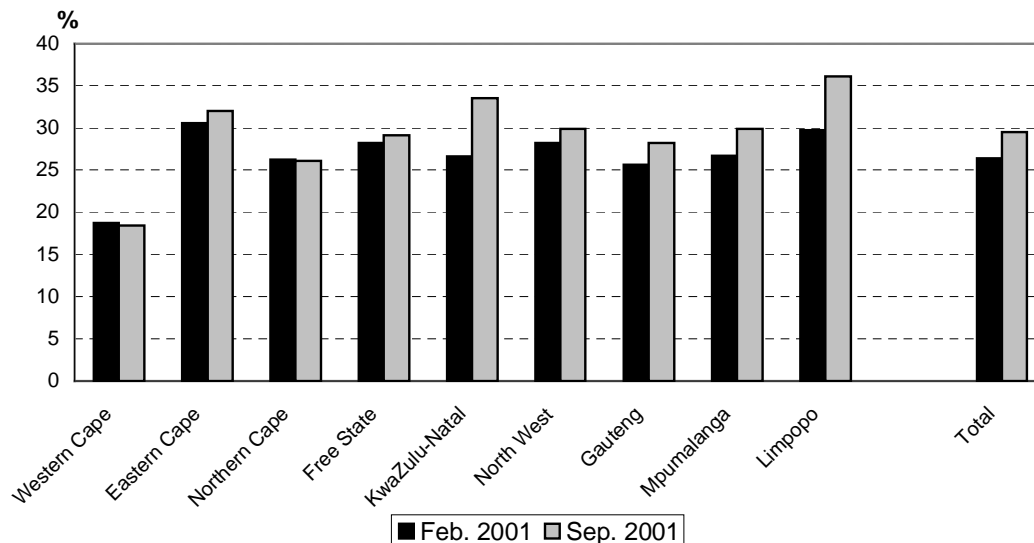
**Figure 2: Official unemployment rate in urban and non-urban areas:
February 2000, September 2000, February 2001 and September 2001**



Unemployment by province

Figure 3 shows that between February 2001 and September 2001 there was an increase in unemployment in all provinces except Western Cape and Northern Cape. However the change is more noticeable in KwaZulu-Natal and Limpopo than in other provinces.

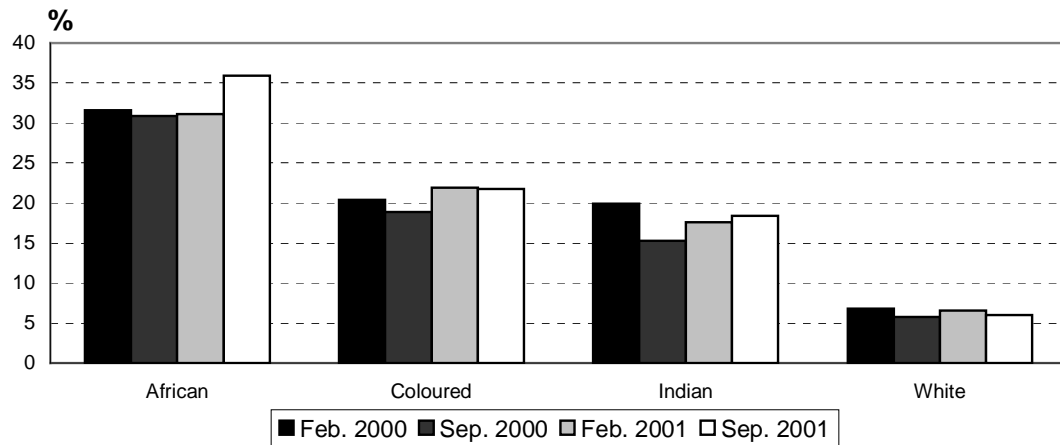
**Figure 3: Official unemployment by province:
February 2001 and September 2001**



Unemployment by population group

Figure 4 indicates a high unemployment rate for Africans compared to other population groups. Whilst among coloured, Indian and white people, the unemployment rate has remained more or less the same from February 2000 to September 2001, African unemployment rose sharply in September 2001.

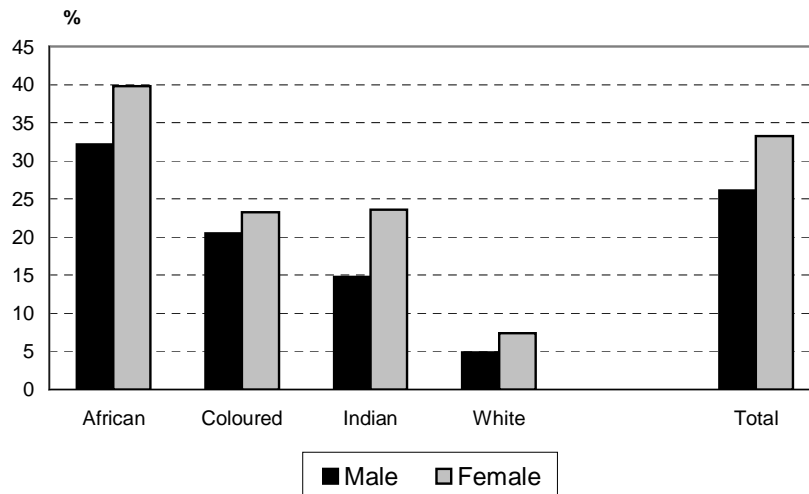
Figure 4 Official unemployment by population group: February 2000, September 2000, February 2001 and September 2001



Unemployment by population group and sex

Figure 5 suggests that unemployment is highest among African women and lowest among white men. However the disparity in gender within population groups is highest among the Indian population.

Figure 5: Official unemployment by population group and sex: September 2001



EMPLOYMENT IN THE FORMAL AND INFORMAL SECTORS

Formal and informal sector employment by industry

The industries providing the greatest percentage of jobs are different in the formal and informal sectors. Table E is based on the LFS of September 2001. It examines the industry in which people work in both the formal and informal sectors. Domestic work is indicated in a separate column. The table shows that:

- Among people working in the formal sector, 24,0% were found in community and social services, while 18,9% were involved in wholesale and retail trade, 18,4% in manufacturing and 8,8% in agriculture.
- Among people working in the informal sector, on the other hand, 16,1% were in agriculture, 42,0% in trade, 11,6% in construction and 7,3% in community services.

TABLE E: EMPLOYMENT IN THE FORMAL AND INFORMAL SECTORS BY INDUSTRY (INCLUDING AGRICULTURE), SEPTEMBER 2001								
Industry	Formal		Informal		Domestic		Total	
	N (000s)	%	N (000s)	%	N (000s)	%	N (000s)	%
Agriculture	666	8,8	359	16,1			1 051	9,7
Mining	484	6,4	3	0,1			487	4,5
Manufacturing	1 384	18,4	199	8,9			1 605	14,8
Electricity	93	1,2	2	0,1			95	0,9
Construction	319	4,2	258	11,6			594	5,5
Trade	1 427	18,9	937	42,0			2 397	22,1
Transport	429	5,7	104	4,6			543	5,0
Business services	890	11,8	77	3,4			975	9,0
Community services	1 812	24,0	163	7,3			1 988	18,4
Private households	10	0,1	127	5,7	916	100,0	1 055	9,7
Other/unspecified industry	27	0,4	3	1,3			42	0,4
Total	7 539	100,0	2 232	100,0	914	100,0	10 833	100,0

Comparison of formal employment figures in the LFS and the SEE

Formal sector employment figures may be obtained from various other Stats SA data sets, including the survey of employment and earnings (SEE), which collects information on formal employment in South Africa (excluding certain industries, divisions and activities as described below).

The comparable results to the LFS of February are from the SEE of March. The comparable results to the LFS of September are from the SEE of the same month. It needs to be borne in mind that SEE obtains data from businesses, while in the LFS households, rather than businesses, are sampled.

Households contain people working in all industries. When complex probability sampling is used, people have the same chance of being selected in their particular stratum in the sample as their overall proportion in a particular industry within that stratum.

The SEE on the other hand collects information from formal sector businesses, *excluding* the following:

- agriculture, hunting, forestry and fishing,
- restaurants and other eating and drinking places, boarding houses, caravan parks, guest farms,
- water and air transport,
- financial institutions excluding banks,
- real estate and business services,
- educational services outside the public sector,
- medical, dental and other health services outside the public sector,
- welfare organisations outside the public sector,
- religious organisations,
- recreational and cultural services,
- household services and domestic workers in private households, and
- informal businesses.

Table F indicates that SEE shows a decline in formal sector employment in the industries and divisions that it includes. The LFS, on the other hand, show an increase in formal sector employment over time, in the industries and divisions that are not well covered by SEE.

TABLE F: COMPARISONS OF FORMAL SECTOR EMPLOYMENT ACCORDING TO THE LFS AND THE SEE				
	February/ March 2000	September 2000	February/ March 2001	September 2001
	(000s)	(000s)	(000s)	(000s)
Employed according to SEE	4 754	4 685	4 676	4 650
Employed in formal sector in activities which are not covered in SEE	1 924	2 157	2 002	2 223

Comparison of formal sector employment by industry in the LFS and the SEE of September 2001

As indicated previously, the SEE excludes a range of businesses not only in certain industries but also in divisions within industries, which may indeed be formal businesses.

Table G indicates significant differences in all types of industry between LFS and SEE.

The SEE finds less employment than the LFS in all types of industry. It would therefore seem as if formal sector employment is growing in those industries or divisions that are not well covered by SEE. This may be indicative of a shift to the tertiary rather than the secondary sector in new job opportunities. It may also be indicative of outsourcing of non-core business in some industries.

TABLE G: THE FORMAL SECTOR AS MEASURED IN THE LFS OF SEPTEMBER 2001 AND THE SEE OF SEPTEMBER 2001					
	LFS	95% confidence limits		SEE	Stat. significance
	N (000s)	Lower	Upper	N (000s)	
Agriculture	(666)	(601)	(731)	-	-
Mining	484	434	534	404	Sign.
Manufacturing	1 384	1 318	1 449	1 265	Sign.
Electricity	93	81	105	39	Sign.
Construction	319	293	344	219	Sign.
Trade	1 427	1 358	1 495	880	Sign.
Transport	429	399	456	209	Sign.
Business services	890	836	944	192	Sign.
Community services (excluding domestic)	1 812	1 731	1 891	1 441	Sign.
Home businesses, other and unspecified	(37)			-	
Total (excluding agriculture, home business, other and unspecified)	6 836	6 643	7 029	4 650	Sign.

LABOUR MARKET TRENDS ACCORDING TO THE EXPANDED DEFINITION OF UNEMPLOYMENT

The main difference between the official and the expanded definitions of unemployment is the requirement in the former that, in order to be classified as unemployed, a person must have engaged in job seeking in the four weeks prior to the interview (*see Note 1 for both definitions*). These criteria have a significant effect on the size of what is considered to be the labour market. Table H below gives overall labour market trends in February and September 2000 and February and September 2001 based on the expanded definition of unemployment.

Table H shows that, using the expanded definition, the size of the economically active population, the number of unemployed people and the unemployment rate increase substantially. A large group of people who were

available for work did not actively seek work in the four weeks prior to the interview. Taking sampling error into account, the total who were not economically active was significantly lower in February 2000 and February 2001 than in September 2001. The increase between September 2000 and September 2001 is not statistically significant. It can be attributed to sampling error.

TABLE H: LFS COMPARISON, FEBRUARY 2000, SEPTEMBER 2000, FEBRUARY 2001 AND SEPTEMBER 2001 USING THE EXPANDED DEFINITION OF UNEMPLOYMENT WITHIN 95% CONFIDENCE LIMITS					
Variable		Lower limit	Estimate	Upper limit	Statistical significance compared to Sep 2001
a	Total employed (000s) = a				
	Feb 2000	11 491	11 880	12 268	Signif.
	Sep 2000	11 446	11 712	11 979	Signif.
	Feb 2001	11 563	11 837	12 111	Signif.
	Sep 2001	10 602	10 833	11 063	.
b	Total unemployed (expanded definition) (000s) = b				
	Feb 2000	6 231	6 553	6 874	Signif.
	Sep 2000	6 339	6 559	6 780	Signif.
	Feb 2001	6 730	6 961	7 191	Signif.
	Sep 2001	7 449	7 698	7 947	
c	Total economically active (000s) = a + b = c				
	Feb 2000	17 898	18 432	18 967	Not signif.
	Sep 2000	17 899	18 272	18 645	Not signif.
	Feb 2001	18 414	18 798	19 182	Not signif.
	Sep 2001	18 186	18 531	18 876	
d	Total not economically active (000s) = d				
	Feb 2000	7 671	8 022	8 373	Signif.
	Sep 2000	8 391	8 623	8 854	Not signif.
	Feb 2001	8 107	8 323	8 539	Signif.
	Sep 2001	8 602	8 834	9 065	
e	Total aged 15–65 years (000s) = c + d = e				
	Feb 2000	25 705	26 454	27 203	Not signif.
	Sep 2000	26 385	26 894	27 404	Not signif.
	Feb 2001	26 596	27 121	27 646	Not signif.
	Sep 2001	26 878	27 365	27 851	
f	Expanded unemployment rate = b * 100 / c = f				
	Feb 2000	34,3%	35,5%	36,8%	Signif.
	Sep 2000	35,0%	35,9%	36,8%	Signif.
	Feb 2001	36,2%	37,0%	37,9%	Signif.
	Sep 2001	40,6%	41,5%	42,5%	
g	Labour market participation rate = c * 100 / e = g				
	Feb 2000	68,8%	69,7%	70,6%	Not signif.
	Sep 2000	67,4%	67,9%	68,5%	Not signif.
	Feb 2001	68,8%	69,3%	69,9%	Not signif.
	Sep 2001	67,1%	67,7%	68,3%	
h	Labour absorption rate = a * 100 / e = h				
	Feb 2000	43,8%	44,9%	46,0%	Signif.
	Sep 2000	42,8%	43,5%	44,3%	Signif.
	Feb 2001	42,9%	43,6%	44,4%	Signif.
	Sep 2001	38,8%	39,6%	40,3%	

Mr Pali Lehohla
Statistician-General: Statistics South Africa

NOTES

1. *Official and expanded unemployment rates*

Statistics South Africa (Stats SA) uses the following definition of unemployment as its *official* definition. The *unemployed* are those people within the *economically active population* who: (a) did not work during the seven days prior to the interview, (b) want to work and are available to start work within a week of the interview, and (c) have taken active steps to look for work or to start some form of self-employment in the four weeks prior to the interview. The *expanded unemployment rate* excludes criterion (c).

Among those who are included in the expanded but not the official definition of unemployment will be discouraged job seekers (those who said they were unemployed but had not taken active steps to find work in the four weeks prior to the interview).

Stats SA reports on the situation of the unemployed using both the official and the expanded definition. In the present economic climate, there is a proportion of discouraged work seekers who face constraints, for example high travel costs and lack of transport, when seeking work.

2. *Sample design*

For the LFS a rotating panel sample design is being used, to allow for measurement of change in people's employment situation over time. The same dwellings will be visited on, at most, five different occasions. After this, new dwelling units will be included for interviewing from the same PSU in the master sample. This means a rotation of 20% of dwelling units each time.

The LFS samples of February and September 2000 were drawn from a master sample, in which the same primary sampling units will be visited in future LFSs. The database of enumerator areas (EAs), as established during the demarcation phase of Census '96, constituted the sampling frame for selecting EAs for the LFS. As part of the master sample, small EAs consisting of fewer than 100 dwelling units were combined with adjacent EAs to form primary sampling units (PSUs) of at least 100 dwelling units, to allow for repeated sampling of dwelling units within each PSU. The sampling procedure for the master sample involved explicit stratification by province and within each province, by urban and non-urban areas. Independent samples of PSUs were drawn for each stratum within each province. The smaller provinces were given a disproportionately larger number of PSUs than the bigger provinces. Simple random sampling was applied to select 10 dwelling units to visit in each PSU as ultimate sampling units. If more than one household is found in the same dwelling unit all such households are interviewed.

Altogether, 3 000 PSUs were drawn for the master sample, by means of probability proportional to size principles in each stratum. The measure of size was the number of dwelling units in each PSU. A subset of 1 000 PSUs was drawn for the pilot LFS of February 2000. This was increased to 3 000 PSUs for September 2000 and February 2001, in which the same 30 000 dwelling units were visited. In September 2001 a new sample of 30 000 dwelling units was drawn. Rotation of 20% of these dwelling units has begun in the fifth round, currently being conducted (February/March 2002).

3. *Coverage*

The target population is all private households and residents in workers hostels. The survey does not cover institutions such as student hostels, old age homes, hospitals, prisons and military barracks.

4. *Weighting the LFS of September 2001*

A two-stage weighting procedure was done on LFS September 2001. The first stage weighted the results to separate estimates of the population size, based on the population census of October 1996, as adjusted by a post-enumeration survey (PES). The second stage used post-stratification by province, gender, population group and five-year interval age groups based on mid-year estimates.

5. *Symbols used in the tables that follow*

When a dash (-) is shown there were no respondents in the category.

When a single asterisk (*) is shown in the table, the sample size was too small to give reliable estimates.

6. *Comparability of results with other Stats SA data sources*

The *survey of employment and earnings* (SEE) collects information on formal employment in South Africa. The comparable results of the SEE, i.e. for March and September, are published in June and December in *statistical release* P0271.

7. *Urbanisation*

The urban population constituted 54,1% of the total population according to *Census '96*. In the weighting matrix for the LFS of September 2001, the proportionate distribution of the population by urban and non-urban areas was based on the population census of 1996. It follows that urbanisation cannot be detected from the LFS, but will be measured by comparing *Census '96* with *Census 2001*.

8. *Confidence intervals*

Stats SA have calculated 95% confidence limits for key variables. These are available on request to users who require this information.

DEFINITIONS OF TERMS

A *household* consists of a single person or a group of people who live together for at least four nights a week, who eat together and who share resources.

A *dwelling unit* is any structure or part of a structure or group of structures occupied by one or more than one household; or which is vacant or under construction but could be lived in at the time of the survey. The dwelling unit is the major listing unit for this survey. However, if multiple households are identified during listing, then each household is listed separately. But the listing unit is not primarily households, as multiple households are sometimes discovered at the time of the survey. In workers hostels, (1) where rooms are occupied by individual persons/households, then each room is treated as a dwelling unit, and (2) in the case of dormitories/communal rooms, each bed is listed separately and treated as a dwelling unit. It is important to note that the dwelling unit as defined here was also the selection unit for our sample.

Population group describes the racial classification of a particular group of South African citizens. The previous government used legislation to impose this type of classification, to divide the South African population into distinct groupings on which to base apartheid policies. For quite a different reason it remains important for Stats SA to continue to use this classification wherever possible. It clearly indicates the effects of discrimination of the past, and permits monitoring of policies to alleviate discrimination. Note that, in the past, population group was based on a legal definition, but it is now based on self-perceptions and self-classification. An *African/black* person is someone who classifies him/herself as such. The same applies to a *coloured, Indian/Asian or white* person.

A *hostel* is a communal living quarter for workers, provided by a public organisation such as a local authority, or a private organisation such as a mining company. These were residential dormitories established for migrant workers during the apartheid era, and they continue to house people working in certain industries, such as the mining industry.

Institutions are communal temporary, semi-permanent or permanent living arrangements for people in special circumstances, for example prisons, police cells, school boarding facilities, homes for the aged or the disabled, hotels and hospitals.

The *working age population* includes all those aged between 15 and 65 years.

The *economically active population* consists of both those who are employed and those who are unemployed.

The *employed* are those who performed work for pay, profit or family gain in the seven days prior to the survey interview, or who were absent from work during these seven days, but did have some form of paid work during this time.

The *official unemployment rate*: see Note 1.

The *expanded unemployment rate*: see Note 1.

The people who are *out of the labour market* or who are *not economically active* are those who are not available for work. This category includes full-time scholars and students, full-time homemakers, those who are retired, and those who are unable or unwilling to work.

The *formal sector* includes all businesses that are registered in any way.

The informal sector consists of those businesses that are not registered in any way. They are generally small in nature, and are seldom run from business premises. Instead, they are run from homes, street pavements or other informal arrangements.

Primary industries include agriculture, forestry and fishing, and mining and quarrying.

Secondary industries include manufacturing, electricity and other utilities, and construction.

Tertiary industries include trade, transport, financial and business services, and social, personal and community services.

Employment status refers to whether or not the person is self-employed, or works as an employee, or both, or else works as a domestic worker in a household.

Location refers to whether the person lives in an urban or non-urban area.

- An *urban* area is one that has been legally proclaimed as being urban. These include towns, cities and metropolitan areas.
- A *semi-urban* area is not part of a legally proclaimed urban area, but adjoins it. Informal settlements are examples of these types of areas. In this publication *semi-urban* areas have been *included* with non-urban areas.
- All other areas are classified as *non-urban*, including commercial farms, small settlements, rural villages and other areas which are further away from towns and cities.

Workers include the self-employed, employers and employees.

Labour market dynamics refer to movement into and out of the labour market, and into and out of actual employment, over a specified time period.

1. Population

1.1 By area, age, population group and sex

1 000

Area and age group	African			Coloured			Indian/Asian			White			Total		
	Total	Male	Female	Total	Male	Female	Total	Male	Female	Total	Male	Female	Total	Male	Female
RSA															
Total	34,800	16,635	18,164	4,091	1,931	2,160	1,266	615	651	4,448	2,260	2,188	44,671	21,474	23,196
0 - 4	5,227	2,621	2,606	553	264	289	107	48	59	349	197	152	6,241	3,134	3,107
5 - 9	3,665	1,853	1,812	414	196	218	92	48	44	330	182	149	4,507	2,283	2,224
10-14	3,935	1,956	1,979	418	213	205	96	47	49	300	155	146	4,754	2,372	2,382
15-19	3,853	1,947	1,906	398	193	205	122	59	62	334	186	148	4,708	2,385	2,323
20-24	3,432	1,655	1,777	351	172	179	132	61	72	259	136	123	4,177	2,026	2,151
25-29	3,085	1,464	1,621	357	161	196	117	62	56	326	161	165	3,889	1,848	2,041
30-34	2,509	1,135	1,374	340	151	190	106	53	53	387	180	207	3,348	1,523	1,825
35-39	2,150	1,015	1,135	303	141	162	101	47	54	396	201	195	2,957	1,408	1,549
40-44	1,831	843	988	245	117	128	102	48	54	327	171	157	2,511	1,182	1,330
45-49	1,385	627	758	216	105	112	84	39	45	315	163	152	2,001	934	1,067
50-54	1,014	454	560	153	73	80	74	38	36	291	144	146	1,533	711	822
55-59	703	317	386	116	54	61	52	29	23	248	123	124	1,124	527	597
60-64	612	223	389	79	34	45	30	13	18	189	85	104	914	357	557
65+	1,354	495	859	147	56	91	51	23	27	378	167	211	1,943	748	1,195
Unspecified	45	28	17	*	*	-	-	-	-	19	*	*	64	37	27
Urban															
Total	15,469	7,492	7,977	3,442	1,624	1,819	1,246	607	638	4,094	2,079	2,015	24,309	11,833	12,476
0 - 4	2,030	1,002	1,028	447	217	229	106	48	58	316	182	134	2,902	1,451	1,451
5 - 9	1,340	666	674	342	163	178	91	48	43	307	171	135	2,085	1,052	1,032
10-14	1,432	706	725	361	184	177	95	46	49	275	143	132	2,165	1,081	1,085
15-19	1,475	736	739	348	170	178	119	59	60	313	174	139	2,256	1,139	1,118
20-24	1,534	739	795	294	149	145	129	58	70	246	131	115	2,205	1,079	1,126
25-29	1,678	844	835	300	135	166	113	61	53	295	142	153	2,391	1,181	1,210
30-34	1,414	691	723	285	125	160	105	53	52	355	166	189	2,163	1,039	1,124
35-39	1,231	610	621	254	116	138	101	47	54	372	188	184	1,964	965	1,000
40-44	1,017	482	535	203	95	108	100	47	53	295	156	140	1,620	782	838
45-49	720	344	377	188	89	99	82	39	44	294	149	144	1,286	621	665
50-54	509	239	270	128	61	67	72	37	35	269	132	136	980	471	509
55-59	338	156	182	99	46	53	51	28	23	224	111	113	718	345	373
60-64	249	93	156	67	29	38	30	13	17	169	74	95	518	211	307
65+	472	166	306	127	45	82	51	23	27	346	151	195	1,007	391	616
Unspecified	30	18	12	-	-	-	-	-	-	18	*	*	48	26	22

1. Population

1.1 By area, age, population group and sex (concluded)

1 000

Area and age group	African			Coloured			Indian/Asian			White			Total		
	Total	Male	Female	Total	Male	Female	Total	Male	Female	Total	Male	Female	Total	Male	Female
Non-urban															
Total	19,330	9,143	10,188	649	307	342	21	*	13	354	181	173	20,362	9,641	10,720
0 - 4	3,197	1,619	1,578	106	47	59	*	-	*	33	15	18	3,339	1,683	1,656
5 - 9	2,325	1,187	1,138	72	33	40	*	-	*	23	*	13	2,422	1,230	1,192
10-14	2,504	1,250	1,254	57	29	28	*	*	*	26	12	14	2,588	1,291	1,297
15-19	2,378	1,211	1,167	50	23	27	*	*	*	21	12	*	2,452	1,247	1,205
20-24	1,898	916	982	57	23	34	*	*	*	13	*	*	1,972	946	1,025
25-29	1,406	620	786	57	27	30	*	*	*	30	19	12	1,498	667	831
30-34	1,095	444	651	56	26	30	*	*	*	32	14	18	1,185	485	701
35-39	918	405	513	50	25	24	-	-	-	24	13	11	992	443	549
40-44	814	362	453	42	22	20	*	*	*	32	15	17	891	400	491
45-49	665	284	381	28	15	13	*	*	*	21	13	*	715	313	402
50-54	504	214	290	26	13	13	*	*	*	22	12	*	554	240	314
55-59	365	161	204	16	*	*	*	*	-	24	12	11	407	183	224
60-64	363	130	233	12	*	*	*	-	*	20	11	*	396	146	249
65+	882	329	553	20	11	*	*	-	*	31	16	16	935	357	579
Unspecified	14	*	*	*	*	-	-	-	-	*	*	*	16	11	*

* For all values of 10 000 or lower the sample size is too small for reliable estimates

- No respondents

Totals include other and unspecified population groups

2. Population of working age

2.1 By economic activity, population group and sex

1 000

Economic activity and population group	Involved			Not involved			Total		
	Total	Male	Female	Total	Male	Female	Total	Male	Female
Run or do any kind of business, big or small, for									
Total	1 750	945	805	25 604	12 029	13 575	27 365	12 981	14 384
African	1 154	528	626	19 554	9 197	10 357	20 713	9 729	10 984
Coloured	84	51	33	2 492	1 158	1 334	2 576	1 209	1 367
Indian/Asian	84	64	20	845	389	456	929	453	476
White	420	296	124	2 683	1 272	1 411	3 108	1 571	1 537
any payment in kind									
Total	7 700	4 783	2 917	19 655	8 192	11 463	27 365	12 981	14 384
African	4 625	3 046	1 579	16 082	6 679	9 403	20 713	9 729	10 984
Coloured	1 065	623	442	1 511	586	925	2 576	1 209	1 367
Indian/Asian	391	235	157	538	218	320	929	453	476
White	1 602	872	731	1 501	697	804	3 108	1 571	1 537
Do any work as a domestic worker for a wage, salary, or any payment in kind									
Total	1 049	150	900	26 305	12 825	13 480	27 365	12 981	14 384
African	920	136	784	19 788	9 589	10 199	20 713	9 729	10 984
Coloured	119	13	107	2 456	1 196	1 260	2 576	1 209	1 367
Indian/Asian	*	-	*	928	453	475	929	453	476
White	*	*	*	3 095	1 568	1 527	3 108	1 571	1 537
Help unpaid in a family business of any kind									
Total	150	59	92	27 204	12 916	14 288	27 365	12 981	14 384
African	122	47	75	20 585	9 678	10 907	20 713	9 729	10 984
Coloured	*	*	*	2 571	1 207	1 364	2 576	1 209	1 367
Indian/Asian	*	*	*	923	450	473	929	453	476
White	17	*	*	3 087	1 562	1 525	3 108	1 571	1 537
Do any work in his/her own or the family's plot, farm, food garden, cattle post or kraal or help in growing farm produce or in looking after animals for the household									
Total	317	188	129	27 037	12 786	14 251	27 365	12 981	14 384
African	274	159	115	20 433	9 566	10 867	20 713	9 729	10 984
Coloured	11	*	*	2 565	1 201	1 364	2 576	1 209	1 367
Indian/Asian	*	*	*	925	452	473	929	453	476
White	27	19	*	3 077	1 549	1 527	3 108	1 571	1 537

2. Population of working age

2.1 By economic activity, population group and sex (concluded)

1 000

Economic activity and population group	Involved			Not involved			Total		
	Total	Male	Female	Total	Male	Female	Total	Male	Female
Do any construction or major repair work on his/her own home, plot, cattle post or business or those of the family									
Total	76	52	24	27 278	12 923	14 355	27 365	12 981	14 384
African	55	35	20	20 652	9 690	10 963	20 713	9 729	10 984
Coloured	*	*	-	2 574	1 208	1 367	2 576	1 209	1 367
Indian/Asian	-	-	-	929	453	476	929	453	476
White	18	14	*	3 085	1 554	1 531	3 108	1 571	1 537
Catch any fish, prawns, shells, wild animals or other food for sale or family food									
Total	*	*	*	27 344	12 966	14 378	27 365	12 981	14 384
African	*	*	*	20 701	9 720	10 981	20 713	9 729	10 984
Coloured	*	*	-	2 574	1 207	1 366	2 576	1 209	1 367
Indian/Asian	-	-	-	929	453	476	929	453	476
White	*	*	-	3 102	1 567	1 535	3 108	1 571	1 537
Beg for money or food in public									
Total	*	*	*	27 349	12 973	14 376	27 365	12 981	14 384
African	*	*	*	20 704	9 724	10 980	20 713	9 729	10 984
Coloured	*	*	*	2 574	1 208	1 366	2 576	1 209	1 367
Indian/Asian	-	-	-	929	453	476	929	453	476
White	-	-	-	3 103	1 569	1 535	3 108	1 571	1 537
Involved in at least one economic activity except begging									
Total	10 764	6 016	4 747	16 601	6 964	9 637	27 365	12 981	14 384
African	6 978	3 859	3 119	13 735	5 870	7 865	20 713	9 729	10 984
Coloured	1 271	688	583	1 304	521	784	2 576	1 209	1 367
Indian/Asian	482	301	182	447	153	294	929	453	476
White	2 008	1 155	852	1 100	415	685	3 108	1 571	1 537

* For all values of 10 000 or lower the sample size is too small for reliable estimates

- No respondents

Totals include other and unspecified population groups

2. Population of working age

2.2 By economic activity and sex

1 000

Economic activity and sex	Involved	Not involved	Total
Run or do any kind of business, big or small for himself/herself			
Total	1 750	25 604	27 365
Male	945	12 029	12 981
Female	805	13 575	14 384
Do any work for a wage, salary, commission or any payment in kind			
Total	7 700	19 655	27 365
Male	4 783	8 192	12 981
Female	2 917	11 463	14 384
Do any work as a domestic worker for a wage, salary, or any payment in kind			
Total	1 049	26 305	27 365
Male	150	12 825	12 981
Female	900	13 480	14 384
Help unpaid in a family business of any kind			
Total	150	27 204	27 365
Male	59	12 916	12 981
Female	92	14 288	14 384
Do any work in his/her own or the family's plot, farm, food garden, cattle post or kraal or help in growing farm produce or in looking after animals for the household			
Total	317	27 037	27 365
Male	188	12 786	12 981
Female	129	14 251	14 384
Do any construction or major repair work on his/her own home, plot, cattle post or business or those of the family			
Total	76	27 278	27 365
Male	52	12 923	12 981
Female	24	14 355	14 384

2. Population of working age

2.2 By economic activity and sex (concluded)

1 000

Economic activity and sex	Involved	Not involved	Total
Catch any fish, prawns, shells, wild animals or other food for sale or family food			
Total	*	27 344	27 365
Male	*	12 966	12 981
Female	*	14 378	14 384
Beg for money or food in public			
Total	*	27 349	27 365
Male	*	12 973	12 981
Female	*	14 376	14 384
Involved in at least one of these activity except begging			
Total	10 764	16 601	27 365
Male	6 016	6 964	12 981
Female	4 747	9 637	14 384

* For all values of 10 000 or lower the sample size is too small for reliable estimates

2. Population of working age
2.3 By economic activity and area

1 000

Economic activity and area	Involved	Not involved	Total
Run or do any kind of business, big or small for himself/herself			
Total	1 750	25 604	27 365
Urban	1 092	15 108	16 208
Non-urban	658	10 495	11 156
Do any work for a wage, salary, commission or any payment in kind			
Total	7 700	19 655	27 365
Urban	5 693	10 508	16 208
Non-urban	2 007	9 147	11 156
Do any work as a domestic worker for a wage, salary, or any payment in kind			
Total	1 049	26 305	27 365
Urban	668	15 533	16 208
Non-urban	381	10 772	11 156
Help unpaid in a family business of any kind			
Total	150	27 204	27 365
Urban	68	16 133	16 208
Non-urban	83	11 071	11 156
Do any work on his/her own or the family plot, farm, food garden, cattle post or kraal or help in growing farm produce or in looking after animals for the household			
Total	317	27 037	27 365
Urban	70	16 131	16 208
Non-urban	247	10 907	11 156

2. Population of working age

2.3 By economic activity and area (concluded)

1 000

Economic activity and area	Involved	Not involved	Total
Do any construction or major repair work on his/her own home, plot, cattle post or business or those of the family			
Total	76	27 278	27 365
Urban	24	16 177	16 208
Non-urban	52	11 101	11 156
Catch any fish, prawns, shells, wild animals or other food for sale or family food			
Total	*	27 344	27 365
Urban	*	16 196	16 208
Non-urban	*	11 148	11 156
Beg for money or food in public			
Total	*	27 349	27 365
Urban	*	16 197	16 208
Non-urban	*	11 152	11 156
Involved in at least one economic activity except begging			
Total	10 764	16 601	27 365
Urban	7 468	8 740	16 208
Non-urban	3 296	7 861	11 156

* For all values of 10 000 or lower the sample size is too small for reliable estimates

2. Population of working age

2.4 By population group, area, sex and labour market status

2.4.1 Official definition of unemployment

1 000

Population group and area	Male						Female						Total					
	Total	Not economically active	Economically active				Total	Not economically active	Economically active				Total	Not economically active	Economically active			
			Total	Workers	Unemployed	Rate %			Total	Workers	Unemployed	Rate %			Total	Workers	Unemployed	Rate %
All population groups																		
Total	12 981	4 792	8 188	6 049	2 139	26.1	14 384	7 214	7 170	4 783	2 386	33.3	27 365	12 006	15 358	10 833	4 525	29.5
Urban	7 874	2 320	5 554	4 169	1 385	24.9	8 334	3 453	4 881	3 344	1 536	31.5	16 208	5 774	10 434	7 513	2 922	28.0
Non-urban	5 106	2 472	2 635	1 881	754	28.6	6 050	3 761	2 289	1 439	850	37.1	11 156	6 233	4 924	3 320	1 604	32.6
African																		
Total	9 729	3 999	5 730	3 882	1 848	32.2	10 984	5 761	5 223	3 142	2 081	39.8	20 713	9 760	10 953	7 024	3 929	35.9
Urban	4 949	1 581	3 368	2 260	1 109	32.9	5 269	2 166	3 103	1 850	1 253	40.4	10 218	3 747	6 471	4 109	2 362	36.5
Non-urban	4 780	2 418	2 362	1 623	739	31.3	5 716	3 595	2 121	1 292	828	39.1	10 496	6 014	4 482	2 915	1 567	35.0
Coloured																		
Total	1 209	338	871	693	178	20.5	1 367	596	771	591	180	23.3	2 576	933	1 642	1 284	358	21.8
Urban	1 020	305	715	547	168	23.5	1 160	493	667	502	165	24.8	2 180	798	1 382	1 049	333	24.1
Non-urban	189	33	156	146	11	6.7	207	102	104	89	15	14.1	396	136	260	235	25	9.7
Indian/Asian																		
Total	453	99	354	302	53	14.8	476	237	239	183	56	23.6	929	336	593	484	109	18.4
Urban	446	98	348	297	52	14.8	466	231	235	179	56	23.7	912	328	583	476	107	18.4
Non-urban	*	*	*	*	*	*	11	*	*	*	*	*	18	*	*	*	*	*
White																		
Total	1 571	352	1 219	1 159	60	4.9	1 537	612	925	857	68	7.4	3 108	964	2 144	2 016	128	6.0
Urban	1 442	333	1 109	1 053	56	5.1	1 422	557	865	803	62	7.2	2 864	890	1 974	1 856	118	6.0
Non-urban	129	19	110	106	*	*	115	55	60	54	*	*	244	74	170	160	*	*

* For all values of 10 000 or lower the sample size is too small for reliable estimates

Totals include other and unspecified population groups

2. Population of working age

2.4 By population group, area, sex and labour market status

2.4.2 Expanded definition of unemployment

1 000

Population group and area	Male						Female						Total					
	Total	Not economically active	Economically active				Total	Not economically active	Economically active				Total	Not economically active	Economically active			
			Total	Workers	Unemployed	Rate			Total	Workers	Unemployed	Rate			Total	Workers	Unemployed	Rate
All population groups																		
Total	12 981	3 651	9 330	6 049	3 280	35.2	14 384	5 183	9 201	4 783	4 418	48.0	27 365	8 834	18 531	10 833	7 698	41.5
Urban	7 874	1 863	6 011	4 169	1 842	30.6	8 334	2 634	5 700	3 344	2 356	41.3	16 208	4 497	11 711	7 513	4 198	35.8
Non-urban	5 106	1 788	3 319	1 881	1 438	43.3	6 050	2 549	3 501	1 439	2 062	58.9	11 156	4 337	6 820	3 320	3 500	51.3
African																		
Total	9 729	2 966	6 763	3 882	2 881	42.6	10 984	3 949	7 035	3 142	3 893	55.3	20 713	6 915	13 798	7 024	6 774	49.1
Urban	4 949	1 222	3 727	2 260	1 468	39.4	5 269	1 526	3 743	1 850	1 893	50.6	10 218	2 747	7 470	4 109	3 361	45.0
Non-urban	4 780	1 744	3 036	1 623	1 413	46.6	5 716	2 424	3 292	1 292	2 000	60.7	10 496	4 167	6 328	2 915	3 413	53.9
Coloured																		
Total	1 209	262	947	693	254	26.8	1 367	448	919	591	328	35.7	2 576	710	1 866	1 284	582	31.2
Urban	1 020	237	783	547	235	30.1	1 160	380	780	502	279	35.7	2 180	617	1 563	1 049	514	32.9
Non-urban	189	25	164	146	18	11.3	207	68	138	89	49	35.3	396	93	302	235	67	22.3
Indian/Asian																		
Total	453	87	367	302	65	17.7	476	214	263	183	80	30.5	929	300	629	484	145	23.0
Urban	446	86	360	297	64	17.7	466	208	258	179	78	30.4	912	294	618	476	142	23.0
Non-urban	*	*	*	*	*	*	11	*	*	*	*	*	18	*	11	*	*	*
White																		
Total	1 571	333	1 237	1 159	78	6.3	1 537	565	972	857	115	11.9	3 108	899	2 209	2 016	193	8.8
Urban	1 442	315	1 126	1 053	74	6.5	1 422	514	909	803	105	11.6	2 864	829	2 035	1 856	179	8.8
Non-urban	129	18	111	106	*	*	115	51	63	54	*	*	244	69	174	160	14	8.2

* For all values of 10 000 or lower the sample size is too small for reliable estimates

Totals include other and unspecified population groups

2. Population of working age

2.5 By province, area, sex and labour market status

2.5.1 Official definition of unemployment

1 000

Province and area	Male						Female						Total					
	Total	Not economically active	Economically active				Total	Not economically active	Economically active				Total	Not economically active	Economically active			
			Total	Workers	Unemployed	Rate			Total	Workers	Unemployed	Rate			Total	Workers	Unemployed	Rate
RSA																		
Total	12 981	4 792	8 188	6 049	2 139	26.1	14 384	7 214	7 170	4 783	2 386	33.3	27 365	12 006	15 358	10 833	4 525	29.5
Urban	7 874	2 320	5 554	4 169	1 385	24.9	8 334	3 453	4 881	3 344	1 536	31.5	16 208	5 774	10 434	7 513	2 922	28.0
Non-urban	5 106	2 472	2 635	1 881	754	28.6	6 050	3 761	2 289	1 439	850	37.1	11 156	6 233	4 924	3 320	1 604	32.6
Western Cape																		
Total	1 351	352	999	834	165	16.5	1 443	608	835	663	173	20.7	2 794	959	1 834	1 497	338	18.4
Urban	1 210	331	879	722	157	17.8	1 299	545	754	590	164	21.8	2 509	876	1 633	1 312	321	19.7
Non-urban	141	21	120	112	*	*	144	62	82	73	*	*	284	83	201	185	16	8.2
Eastern Cape																		
Total	1 796	882	913	629	284	31.1	2 205	1 269	937	628	308	32.9	4 001	2 151	1 850	1 258	592	32.0
Urban	738	270	468	315	153	32.7	872	386	486	318	168	34.5	1 610	656	954	633	321	33.6
Non-urban	1 057	612	445	315	131	29.3	1 334	883	451	310	141	31.2	2 391	1 495	896	625	271	30.3
Northern Cape																		
Total	272	97	176	136	39	22.3	291	155	136	93	42	31.1	563	252	311	230	81	26.1
Urban	189	82	108	74	34	31.3	210	111	99	63	36	36.4	399	193	206	137	70	33.7
Non-urban	83	15	68	62	*	*	81	44	37	31	*	*	164	59	105	93	12	11.2
Free State																		
Total	918	294	624	473	152	24.3	912	429	484	312	171	35.4	1 830	722	1 108	785	323	29.1
Urban	613	223	389	278	111	28.6	660	302	358	234	123	34.5	1 272	525	747	512	235	31.4
Non-urban	305	70	235	195	40	17.1	253	127	126	78	48	38.0	558	197	361	273	88	24.4
KwaZulu-Natal																		
Total	2 539	1 031	1 508	1 036	472	31.3	3 021	1 589	1 432	918	514	35.9	5 561	2 620	2 940	1 955	986	33.5
Urban	1 445	438	1 007	745	262	26.0	1 597	676	921	623	298	32.3	3 042	1 115	1 928	1 368	559	29.0
Non-urban	1 094	593	501	291	210	41.9	1 424	913	511	295	216	42.2	2 518	1 506	1 013	587	426	42.1

2. Population of working age

2.5 By province, area, sex and labour market status

2.5.1 Official definition of unemployment (concluded)

1 000

Province and area	Male						Female						Total					
	Total	Not economically active	Economically active				Total	Not economically active	Economically active				Total	Not economically active	Economically active			
			Total	Workers	Unemployed	Rate			Total	Workers	Unemployed	Rate			Total	Workers	Unemployed	Rate
North West																		
Total	1 092	431	661	507	155	23.4	1 127	649	477	291	186	38.9	2 219	1 080	1 139	798	340	29.9
Urban	405	144	261	199	62	23.9	437	213	224	142	82	36.6	842	357	485	340	144	29.8
Non-urban	687	287	400	308	92	23.0	690	436	254	150	104	41.0	1 377	723	654	458	196	30.0
Gauteng																		
Total	2 764	654	2 110	1 587	523	24.8	2 674	962	1 713	1 156	557	32.5	5 438	1 616	3 822	2 743	1 080	28.2
Urban	2 688	642	2 046	1 533	513	25.1	2 599	937	1 662	1 119	542	32.6	5 287	1 580	3 708	2 653	1 055	28.5
Non-urban	76	12	64	54	*	*	75	24	51	37	14	28.2	151	36	115	90	25	21.6
Mpumalanga																		
Total	882	333	548	408	140	25.6	983	505	478	311	167	34.9	1 865	839	1 026	719	307	29.9
Urban	377	119	258	189	68	26.6	423	185	239	154	84	35.4	800	304	496	343	153	30.8
Non-urban	505	214	291	219	72	24.6	560	321	240	157	82	34.4	1 065	535	530	376	154	29.0
Limpopo																		
Total	1 367	719	649	438	210	32.4	1 727	1 049	678	410	269	39.6	3 094	1 768	1 327	848	479	36.1
Urban	209	71	138	113	25	18.1	238	98	140	101	39	27.7	447	168	278	215	64	22.9
Non-urban	1 158	648	510	325	185	36.3	1 489	951	538	309	230	42.7	2 648	1 599	1 049	633	415	39.6

* For all values of 10 000 or lower the sample size is too small for reliable estimates

Due to rounding numbers do not necessarily add up to totals

Totals include other and unspecified population groups

2. Population of working age
2.5 By province, area, sex and labour market status
2.5.2 Expanded definition of unemployment

1 000

Province and area	Male						Female						Total					
	Total	Not economically active	Economically active				Total	Not economically active	Economically active				Total	Not economically active	Economically active			
			Total	Workers	Unemployed	Rate			Total	Workers	Unemployed	Rate			Total	Workers	Unemployed	Rate
RSA																		
Total	12 981	3 651	9 330	6 049	3 280	35.2	14 384	5 183	9 201	4 783	4 418	48.0	27 365	8 834	18 531	10 833	7 698	41.5
Urban	7 874	1 863	6 011	4 169	1 842	30.6	8 334	2 634	5 700	3 344	2 356	41.3	16 208	4 497	11 711	7 513	4 198	35.8
Non-urban	5 106	1 788	3 319	1 881	1 438	43.3	6 050	2 549	3 501	1 439	2 062	58.9	11 156	4 337	6 820	3 320	3 500	51.3
Western Cape																		
Total	1 351	290	1 061	834	227	21.4	1 443	482	961	663	298	31.0	2 794	772	2 022	1 497	525	26.0
Urban	1 210	271	939	722	216	23.0	1 299	433	866	590	277	31.9	2 509	704	1 805	1 312	493	27.3
Non-urban	141	19	122	112	*	*	144	49	94	73	21	22.7	284	68	217	185	32	14.7
Eastern Cape																		
Total	1 796	644	1 152	629	522	45.3	2 205	917	1 288	628	659	51.2	4 001	1 561	2 439	1 258	1 182	48.4
Urban	738	206	532	315	217	40.8	872	288	583	318	265	45.4	1 610	495	1 115	633	482	43.2
Non-urban	1 057	437	620	315	305	49.3	1 334	629	704	310	394	56.0	2 391	1 067	1 324	625	700	52.8
Northern Cape																		
Total	272	72	200	136	63	31.8	291	115	176	93	83	47.0	563	187	376	230	146	38.9
Urban	189	63	126	74	52	41.2	210	87	123	63	60	48.9	399	151	249	137	112	45.0
Non-urban	83	*	74	62	12	15.7	81	28	53	31	23	42.4	164	36	127	93	34	26.9
Free State																		
Total	918	244	674	473	202	29.9	912	315	597	312	285	47.7	1 830	559	1 272	785	486	38.2
Urban	613	188	425	278	147	34.6	660	231	429	234	195	45.4	1 272	418	854	512	341	40.0
Non-urban	305	56	250	195	55	21.9	253	85	168	78	90	53.6	558	140	418	273	145	34.7
KwaZulu-Natal																		
Total	2 539	770	1 769	1 036	733	41.4	3 021	1 157	1 864	918	946	50.7	5 561	1 927	3 633	1 955	1 679	46.2
Urban	1 445	345	1 100	745	355	32.2	1 597	517	1 080	623	457	42.3	3 042	862	2 180	1 368	812	37.2
Non-urban	1 094	425	670	291	378	56.5	1 424	640	784	295	488	62.3	2 518	1 065	1 453	587	867	59.6

2. Population of working age

2.5 By province, area, sex and labour market status

2.5.2 Expanded definition of unemployment (concluded)

1 000

Province and area	Male						Female						Total					
	Total	Not economically active	Economically active				Total	Not economically active	Economically active				Total	Not economically active	Economically active			
			Total	Workers	Unemployed	Rate			Total	Workers	Unemployed	Rate			Total	Workers	Unemployed	Rate
North West																		
Total	1 092	294	798	507	291	36.5	1 127	427	700	291	408	58.3	2 219	721	1 497	798	699	46.7
Urban	405	113	291	199	93	31.9	437	152	284	142	142	50.1	842	266	576	340	235	40.9
Non-urban	687	181	506	308	198	39.2	690	275	415	150	266	64.0	1 377	455	922	458	464	50.3
Gauteng																		
Total	2 764	532	2 232	1 587	646	28.9	2 674	728	1 946	1 156	790	40.6	5 438	1 260	4 179	2 743	1 436	34.4
Urban	2 688	520	2 168	1 533	635	29.3	2 599	709	1 890	1 119	771	40.8	5 287	1 229	4 059	2 653	1 406	34.6
Non-urban	76	11	64	54	11	16.8	75	19	56	37	19	34.4	151	31	120	90	30	25.0
Mpumalanga																		
Total	882	263	619	408	210	34.0	983	372	611	311	300	49.1	1 865	635	1 230	719	511	41.5
Urban	377	99	278	189	89	32.0	423	142	281	154	127	45.2	800	241	560	343	216	38.7
Non-urban	505	164	340	219	121	35.6	560	230	330	157	173	52.4	1 065	394	670	376	294	43.9
Limpopo																		
Total	1 367	543	824	438	386	46.8	1 727	669	1 058	410	649	61.3	3 094	1 212	1 883	848	1 035	55.0
Urban	209	57	152	113	39	25.7	238	75	163	101	61	37.7	447	132	315	215	100	31.9
Non-urban	1 158	486	672	325	347	51.6	1 489	594	896	309	587	65.6	2 648	1 080	1 568	633	934	59.6

* For all values of 10 000 or lower the sample size is too small for reliable estimates

Due to rounding numbers do not necessarily add up to totals

Totals include other and unspecified population groups

2. Population of working age
2.6 By highest level of education, sex and labour market status
2.6.1 Official definition of unemployment
2.6.1.1 All population groups

1 000

Highest level of education	Male						Female						Total					
	Total	Not economy- cally active	Economically active				Total	Not economy- cally active	Economically active				Total	Not economy- cally active	Economically active			
			Total	Workers	Unem- ployed	Rate			Total	Workers	Unem- ployed	Rate			Total	Workers	Unem- ployed	Rate
Total	12 981	4 792	8 188	6 049	2 139	26.1	14 384	7 214	7 170	4 783	2 386	33.3	27 365	12 006	15 358	10 833	4 525	29.5
None	754	302	452	369	83	18.3	1 168	737	432	325	107	24.7	1 923	1 039	884	694	189	21.4
Grade 0 to Grade 3/Std 1	611	238	372	280	92	24.7	583	336	247	183	64	25.9	1 194	574	620	464	156	25.2
Grade 4/Std 2	454	178	276	197	79	28.5	439	248	192	136	55	28.9	894	426	468	334	134	28.6
Grade 5/Std 3	561	246	315	225	90	28.5	574	319	255	170	85	33.4	1 135	565	570	395	175	30.7
Grade 6/Std 4	774	344	430	313	117	27.2	784	438	346	233	112	32.5	1 558	782	776	547	229	29.6
Grade 7/Std 5	1 148	517	631	436	195	30.9	1 268	742	526	346	180	34.3	2 416	1 259	1 157	782	376	32.5
Grade 8/Std 6	1 278	617	661	460	201	30.4	1 430	859	571	366	206	36.0	2 708	1 476	1 232	826	407	33.0
Grade 9/Std 7	1 105	577	528	359	169	32.0	1 291	794	497	289	208	41.8	2 396	1 371	1 025	648	377	36.8
Grade 10/Std 8	1 370	569	801	567	234	29.2	1 592	886	706	422	284	40.2	2 961	1 455	1 507	989	518	34.4
Grade 11/Std 9	1 098	497	601	367	234	39.0	1 250	675	575	290	285	49.6	2 348	1 172	1 176	656	520	44.2
Grade 12/Std 10	2 431	510	1 921	1 400	521	27.1	2 638	923	1 715	1 096	619	36.1	5 069	1 433	3 636	2 496	1 140	31.4
NTC I - NTC III	151	39	111	96	15	13.7	46	19	26	15	11	41.4	196	59	138	112	26	19.0
Dipl./cert. with Grade 11/Std 9 or lower	95	14	81	66	15	18.1	123	30	93	71	22	23.6	217	43	174	137	37	21.0
Dipl./cert. with Grade 12/Std 10	546	69	477	421	56	11.7	679	117	562	459	103	18.4	1 225	186	1 039	880	159	15.3
Degree and higher	467	36	431	407	24	5.6	420	58	362	327	35	9.6	887	94	793	734	59	7.4
Other	21	12	*	*	*	*	*	*	*	*	*	7.4	29	15	14	12	*	*
Unspecified	116	26	90	77	13	14.3	90	30	60	51	*	*	206	56	149	127	22	14.8

* For all values of 10 000 or lower the sample size is too small for reliable estimates

2. Population of working age

2.6 By highest level of education, sex and labour market status

2.6.1 Official definition of unemployment

2.6.1.2 African

1 000

Highest level of education	Male						Female						Total					
	Total	Not economy- cally active	Economically active				Total	Not economy- cally active	Economically active				Total	Not economy- cally active	Economically active			
			Total	Workers	Unem- ployed	Rate			Total	Workers	Unem- ployed	Rate			Total	Workers	Unem- ployed	Rate
Total	9 729	3 999	5 730	3 882	1 848	32.2	10 984	5 761	5 223	3 142	2 081	39.8	20 713	9 760	10 953	7 024	3 929	35.9
None	684	275	409	329	81	19.7	1 098	691	408	306	102	25.0	1 782	965	817	634	183	22.3
Grade 0 to Grade 3/Std 1	562	223	340	252	88	25.8	521	301	220	163	58	26.2	1 083	523	560	415	145	26.0
Grade 4/Std 2	422	168	253	179	75	29.4	397	220	177	124	53	30.0	819	389	430	303	128	29.7
Grade 5/ Std 3	511	232	280	195	85	30.3	506	274	232	153	79	34.0	1 017	506	511	348	163	32.0
Grade 6/Std 4	686	318	368	266	103	27.9	684	387	296	196	100	33.9	1 370	705	665	462	203	30.5
Grade 7/Std 5	1 005	466	539	370	169	31.4	1 089	641	448	286	162	36.2	2 094	1 107	987	655	331	33.6
Grade 8/Std 6	1 046	526	520	354	166	32.0	1 152	694	459	287	172	37.5	2 199	1 220	979	640	338	34.6
Grade 9/Std 7	878	475	403	263	141	34.9	1 049	656	393	219	174	44.3	1 927	1 130	797	482	315	39.5
Grade 10/Std 8	973	447	526	340	186	35.4	1 165	661	503	264	239	47.6	2 137	1 108	1 029	603	426	41.4
Grade 11/Std 9	889	410	479	266	213	44.4	1 026	558	468	208	260	55.5	1 915	968	947	474	473	49.9
Grade 12/Std 10	1 466	353	1 113	674	439	39.4	1 564	548	1 016	488	527	51.9	3 030	901	2 129	1 162	966	45.4
NTC I - NTC III	47	19	28	20	*	29.4	30	14	16	*	*	*	77	33	44	26	19	41.9
Dipl./cert. with Grade 11/Std 9 or lower	49	*	40	27	13	33.0	63	18	45	30	16	34.4	112	27	85	56	29	33.8
Dipl./cert. with Grade 12/Std 10	273	39	234	183	51	21.7	402	56	346	250	96	27.7	675	95	580	434	146	25.2
Degree and higher	137	12	125	108	17	13.3	168	18	150	125	24	16.2	305	30	275	234	41	14.9
Other	*	*	*	-	*	*	*	*	*	*	-	*	12	*	*	*	*	54.6
Unspecified	92	21	71	58	12	17.5	66	22	44	36	*	*	158	43	115	94	20	17.9

* For all values of 10 000 or lower the sample size is too small for reliable estimates

- No respondents

2. Population of working age
2.6 By highest level of education, sex and labour market status
2.6.1 Official definition of unemployment
2.6.1.3 Coloured

1 000

Highest level of education	Male						Female						Total					
	Total	Not economy- cally active	Economically active				Total	Not economy- cally active	Economically active				Total	Not economy- cally active	Economically active			
			Total	Workers	Unem- ployed	Rate			Total	Workers	Unem- ployed	Rate			Total	Workers	Unem- ployed	Rate
Total	1 209	338	871	693	178	20.5	1 367	596	771	591	180	23.3	2 576	933	1 642	1 284	358	21.8
None	60	24	37	34	*	*	60	36	23	19	*	*	120	60	60	53	*	*
Grade 0 to Grade 3/Std 1	48	16	32	28	*	*	54	29	25	19	*	*	102	45	57	47	*	*
Grade 4/Std 2	28	*	20	17	*	*	35	21	14	12	*	*	63	29	35	29	*	*
Grade 5/ Std 3	46	12	34	29	*	*	59	38	21	17	*	*	105	50	55	46	*	*
Grade 6/Std 4	78	24	54	42	12	22.5	88	42	46	34	12	25.3	165	66	100	76	24	23.8
Grade 7/Std 5	114	37	77	55	22	28.9	146	78	68	53	15	22.2	260	115	145	107	37	25.8
Grade 8/Std 6	159	52	107	79	28	26.0	173	88	86	60	26	29.8	332	140	192	139	53	27.7
Grade 9/Std 7	130	50	79	56	23	29.0	157	77	79	53	26	32.7	286	128	158	110	49	30.9
Grade 10/Std 8	149	44	106	79	27	25.1	159	66	93	67	26	27.5	308	110	198	146	52	26.3
Grade 11/Std 9	80	25	55	43	12	21.0	96	40	56	39	16	29.6	176	65	110	82	28	25.4
Grade 12/Std 10	219	31	187	153	34	18.2	238	65	173	136	37	21.2	456	96	360	290	71	19.6
NTC I - NTC III	13	*	*	*	*	*	*	*	*	*	-	-	15	*	11	*	*	*
Dipl./cert. with Grade 11/Std 9 or lower	*	-	*	*	-	-	12	*	*	*	*	*	18	*	17	15	*	*
Dipl./cert. with Grade 12/Std 10	40	*	36	34	*	*	59	*	52	48	*	*	99	*	88	82	*	*
Degree and higher	21	*	20	19	*	*	16	*	13	13	-	-	37	*	33	32	*	*
Other	*	*	*	*	-	-	-	-	-	-	-	-	*	*	*	*	-	-
Unspecified	15	*	12	12	-	-	13	*	*	*	*	*	28	*	22	21	*	*

* For all values of 10 000 or lower the sample size is too small for reliable estimates

- No respondents

2. Population of working age
2.6 By highest level of education, sex and labour market
2.6.1 Official definition of unemployment
2.6.1.4 Indian/Asian

1 000

Highest level of education	Male						Female						Total					
	Total	Not economy- cally active	Economically active				Total	Not economy- cally active	Economically active				Total	Not economy- cally active	Economically active			
			Total	Workers	Unem- ployed	Rate			Total	Workers	Unem- ployed	Rate			Total	Workers	Unem- ployed	Rate
Total	453	99	354	302	53	14.8	476	237	239	183	56	23.6	929	336	593	484	109	18.4
None	*	*	*	*	-	-	*	*	-	-	-	-	13	*	*	*	-	-
Grade 0 to Grade 3/Std 1	-	-	-	-	-	-	*	*	*	*	*	*	*	*	*	*	*	*
Grade 4/Std 2	*	*	*	*	-	-	*	*	-	-	-	-	*	*	*	*	*	*
Grade 5/Std 3	*	*	*	*	-	-	*	*	*	-	*	*	11	*	*	*	*	*
Grade 6/Std 4	*	*	*	*	*	*	*	*	*	*	*	*	17	*	*	*	*	*
Grade 7/Std 5	14	*	*	*	*	*	22	16	*	*	*	*	36	21	15	*	*	*
Grade 8/Std 6	28	13	15	*	*	*	43	33	11	*	*	*	71	45	26	18	*	*
Grade 9/Std 7	29	11	17	15	*	*	24	15	-	*	*	*	52	26	26	22	*	*
Grade 10/Std 8	62	19	42	35	*	*	58	32	26	20	*	*	119	51	68	55	*	*
Grade 11/Std 9	46	14	32	24	*	*	36	24	12	*	*	*	82	38	44	31	*	*
Grade 12/Std 10	170	25	144	123	21	14.5	179	70	109	82	27	24.6	349	96	253	206	*	*
NTC I - NTC III	*	-	*	*	-	-	*	*	*	*	-	-	*	*	*	*	-	-
Dipl./cert. with Grade 11/Std 9 or lower	*	*	*	*	-	-	*	*	*	*	*	*	18	*	13	12	*	*
Dipl./cert. with Grade 12/Std 10	28	*	27	26	*	*	23	*	17	13	*	*	52	*	44	39	*	*
Degree and higher	41	*	38	35	*	*	39	*	34	29	*	*	79	*	73	64	*	*
Other	-	-	-	-	-	-	-	-	-	-	-	-	-	-	-	-	-	-
Unspecified	*	-	*	*	-	-	*	*	*	*	-	*	*	*	*	*	-	-

* For all values of 10 000 or lower the sample size is too small for reliable estimates

- No respondents

2. Population of working age
2.6 By highest level of education, sex and labour market status
2.6.1 Official definition of unemployment
2.6.1.5 White

1 000

Highest level of education	Male						Female						Total					
	Total	Not economy- cally active	Economically active				Total	Not economy- cally active	Economically active				Total	Not economy- cally active	Economically active			
			Total	Workers	Unem- ployed	Rate			Total	Workers	Unem- ployed	Rate			Total	Workers	Unem- ployed	Rate
Total	1 571	352	1 219	1 159	60	4.9	1 537	612	925	857	68	7.4	3 108	964	2 144	2 016	128	6.0
None	*	*	-	-	-	-	*	*	*	*	-	-	*	*	*	*	-	-
Grade 0 to Grade 3/Std 1	-	-	-	-	-	-	*	*	-	-	-	-	*	*	-	-	-	-
Grade 4/Std 2	*	*	*	*	-	-	*	*	-	-	-	-	*	*	*	*	-	-
Grade 5/Std 3	-	-	-	-	-	-	*	-	*	-	*	*	*	-	*	-	*	*
Grade 6/Std 4	*	*	*	*	*	*	*	*	*	*	-	-	*	*	*	*	*	*
Grade 7/Std 5	15	*	*	*	*	*	11	*	*	*	*	*	25	16	*	*	*	*
Grade 8/Std 6	45	26	19	17	*	*	60	44	16	11	*	*	105	70	35	28	*	*
Grade 9/Std 7	69	40	28	26	*	*	61	45	15	*	*	*	130	86	44	35	*	*
Grade 10/Std 8	185	59	126	112	14	10.8	209	125	84	71	13	15.7	393	184	210	183	27	12.8
Grade 11/Std 9	82	48	34	32	*	*	92	53	39	35	*	*	174	101	73	67	*	*
Grade 12/Std 10	573	100	474	447	26	5.5	647	236	410	382	28	6.9	1 220	336	884	830	54	6.1
NTC I - NTC III	86	17	69	64	*	*	*	*	*	*	*	*	96	19	76	71	*	*
Dipl./cert. with Grade 11/Std 9 or lower	32	*	30	29	*	*	37	*	30	26	*	*	69	*	59	54	*	*
Dipl./cert. with Grade 12/Std 10	200	22	178	176	*	*	194	47	147	146	*	*	394	69	324	322	*	*
Degree and higher	263	20	244	240	*	*	196	33	163	159	*	*	460	53	407	398	*	*
Other	*	*	*	*	-	-	*	*	*	*	-	-	*	*	*	*	-	-
Unspecified	*	*	*	*	*	*	*	*	*	*	-	-	14	*	*	*	*	*

* For all values of 10 000 or lower the sample size is too small for reliable estimates

- No respondents

2. Population of working age
2.6 By highest level of education, sex and labour market status
2.6.2 Expanded definition of unemployment
2.6.2.1 All population groups

1 000

Highest level of education	Male						Female						Total					
	Total	Not economy- cally active	Economically active				Total	Not economy- cally active	Economically active				Total	Not economy- cally active	Economically active			
			Total	Workers	Unem- ployed	Rate			Total	Workers	Unem- ployed	Rate			Total	Workers	Unem- ployed	Rate
Total	12 981	3 651	9 330	6 049	3 280	35.2	14 384	5 183	9 201	4 783	4 418	48.0	27 365	8 834	18 531	10 833	7 698	41.5
None	754	224	531	369	161	30.4	1 168	573	595	325	270	45.4	1 923	797	1 126	694	432	38.3
Grade 0 to Grade 3/Std 1	611	148	462	280	182	39.3	583	222	362	183	178	49.3	1 194	370	824	464	360	43.7
Grade 4/Std 2	454	120	335	197	137	41.0	439	164	275	136	139	50.5	894	284	610	334	276	45.3
Grade 5/Std 3	561	171	390	225	165	42.3	574	218	356	170	186	52.3	1 135	389	746	395	351	47.1
Grade 6/Std 4	774	248	526	313	213	40.5	784	301	483	233	250	51.7	1 558	549	1 010	547	463	45.8
Grade 7/Std 5	1 148	406	742	436	306	41.2	1 268	538	730	346	384	52.6	2 416	945	1 472	782	690	46.9
Grade 8/Std 6	1 278	507	771	460	311	40.4	1 430	646	784	366	418	53.4	2 708	1 153	1 555	826	730	46.9
Grade 9/Std 7	1 105	489	616	359	257	41.7	1 291	591	701	289	411	58.7	2 396	1 080	1 317	648	668	50.8
Grade 10/Std 8	1 370	467	902	567	336	37.2	1 592	692	900	422	478	53.1	2 961	1 159	1 802	989	814	45.1
Grade 11/Std 9	1 098	395	703	367	336	47.8	1 250	470	780	290	490	62.9	2 348	865	1 483	656	827	55.7
Grade 12/Std 10	2 431	327	2 104	1 400	704	33.5	2 638	583	2 055	1 096	959	46.7	5 069	910	4 159	2 496	1 663	40.0
NTC I - NTC III	151	32	119	96	23	19.0	46	16	30	15	15	48.6	196	48	149	112	37	25.0
Dipl./cert. with Grade 11/Std 9 or lower	95	10	84	66	18	21.6	123	23	100	71	29	28.8	217	33	184	137	47	25.5
Dipl./cert. with Grade 12/Std 10	546	50	497	421	75	15.2	679	74	605	459	146	24.1	1 225	124	1 101	880	221	20.1
Degree and higher	467	29	438	407	31	7.0	420	46	374	327	47	12.5	887	75	812	734	78	9.5
Other	21	11	*	*	*	*	*	*	*	*	*	*	29	14	15	12	*	*
Unspecified	116	17	98	77	22	22.1	90	22	68	51	17	25.2	206	40	166	127	39	23.3

* For all values of 10 000 or lower the sample size is too small for reliable estimates

2. Population of working age
2.6 By highest level of education, sex and labour market status
2.6.2 Expanded definition of unemployment
2.6.2.2 African

1 000

Highest level of education	Male						Female						Total					
	Total	Not economy- cally active	Economically active				Total	Not economy- cally active	Economically active				Total	Not economy- cally active	Economically active			
			Total	Workers	Unem- ployed	Rate			Total	Workers	Unem- ployed	Rate			Total	Workers	Unem- ployed	Rate
Total	9 729	2 966	6 763	3 882	2 881	42.6	10 984	3 949	7 035	3 142	3 893	55.3	20 713	6 915	13 798	7 024	6 774	49.1
None	684	199	486	329	157	32.3	1 098	532	566	306	260	46.0	1 782	731	1 052	634	417	39.7
Grade 0 to Grade 3/Std 1	562	135	427	252	175	41.0	521	196	325	163	162	49.9	1 083	332	752	415	337	44.8
Grade 4/Std 2	422	111	310	179	132	42.4	397	142	255	124	132	51.6	819	253	566	303	263	46.5
Grade 5/Std 3	511	161	350	195	155	44.4	506	187	319	153	166	52.1	1 017	347	670	348	322	48.1
Grade 6/Std 4	686	229	457	266	192	41.9	684	260	424	196	228	53.8	1 370	488	881	462	420	47.6
Grade 7/Std 5	1 005	366	639	370	269	42.1	1 089	454	635	286	349	55.0	2 094	820	1 274	655	618	48.5
Grade 8/Std 6	1 046	432	614	354	260	42.4	1 152	509	643	287	356	55.4	2 199	942	1 257	640	616	49.0
Grade 9/Std 7	878	394	484	263	221	45.7	1 049	477	572	219	353	61.7	1 927	871	1 056	482	574	54.4
Grade 10/Std 8	973	361	612	340	272	44.5	1 165	493	671	264	407	60.7	2 137	854	1 283	603	680	53.0
Grade 11/Std 9	889	316	573	266	307	53.6	1 026	365	661	208	452	68.5	1 915	681	1 233	474	759	61.5
Grade 12/Std 10	1 466	191	1 275	674	601	47.1	1 564	262	1 302	488	813	62.5	3 030	453	2 577	1 162	1 414	54.9
NTC I - NTC III	47	15	32	20	12	38.3	30	12	19	*	13	68.5	77	26	51	26	25	49.4
Dipl./cert. with Grade 11/Std 9 or lower	49	*	43	27	17	38.6	63	11	52	30	22	43.0	112	17	95	56	39	41.0
Dipl./cert. with Grade 12/Std 10	273	24	249	183	66	26.4	402	21	381	250	131	34.3	675	45	630	434	196	31.2
Degree and higher	137	*	131	108	23	17.2	168	12	156	125	31	19.7	305	18	287	234	53	18.6
Other	*	*	*	*	*	*	*	*	*	*	*	*	12	*	*	*	*	*
Unspecified	92	12	79	58	21	26.4	66	15	51	36	15	30.0	158	27	131	94	36	27.8

* For all values of 10 000 or lower the sample size is too small for reliable estimates

2. Population of working age

2.6 By highest level of education, sex and labour market status

2.6.2 Expanded definition of unemployment

2.6.2.3 Coloured

1 000

Highest level of education	Male						Female						Total					
	Total	Not economy- cally active	Economically active				Total	Not economy- cally active	Economically active				Total	Not economy- cally active	Economically active			
			Total	Workers	Unem- ployed	Rate			Total	Workers	Unem- ployed	Rate			Total	Workers	Unem- ployed	Rate
Total	1 209	262	947	693	254	26.8	1 367	448	919	591	328	35.7	2 576	710	1 866	1 284	582	31.2
None	60	21	39	34	*	*	60	31	28	19	*	*	120	53	67	53	14	21.4
Grade 0 to Grade 3/Std 1	48	13	35	28	*	*	54	20	34	19	15	44.0	102	33	69	47	22	31.8
Grade 4/Std 2	28	*	22	17	*	*	35	16	19	12	*	*	63	22	41	29	12	29.9
Grade 5/Std 3	46	*	37	29	*	*	59	25	34	17	17	50.2	105	34	71	46	25	35.6
Grade 6/Std 4	78	17	61	42	19	31.7	88	33	54	34	20	37.0	165	50	115	76	39	34.2
Grade 7/Std 5	114	26	88	55	33	37.6	146	63	84	53	31	36.7	260	89	171	107	64	37.2
Grade 8/Std 6	159	40	119	79	40	33.6	173	67	107	60	46	43.6	332	107	226	139	87	38.3
Grade 9/Std 7	130	44	85	56	29	34.1	157	58	99	53	45	45.9	286	103	184	110	74	40.4
Grade 10/Std 8	149	33	117	79	38	32.3	159	49	109	67	42	38.7	308	82	226	146	80	35.4
Grade 11/Std 9	80	19	61	43	18	29.0	96	32	64	39	25	38.9	176	51	125	82	43	34.0
Grade 12/Std 10	219	20	198	153	45	22.7	238	41	197	136	60	30.7	456	61	395	290	105	26.7
NTC I - NTC III	13	*	*	*	*	*	*	*	*	*	*	*	15	*	12	*	*	*
Dipl./cert. with Grade 11/Std 9 or lower	*	*	*	*	*	*	12	*	11	*	*	*	18	*	17	15	*	*
Dipl./cert. with Grade 12/Std 10	40	*	37	34	*	*	59	*	53	48	*	*	99	*	90	82	*	*
Degree and higher	21	*	20	19	*	*	16	*	13	13	-	-	37	*	33	32	*	*
Other	*	*	*	*	-	-	*	*	-	-	-	-	*	*	*	*	-	-
Unspecified	15	*	12	12	*	*	13	*	11	*	*	*	28	*	23	21	*	*

* For all values of 10 000 or lower the sample size is too small for reliable estimates

- No respondents

2. Population of working age
2.6 By highest level of education, sex and labour market
2.6.2 Expanded definition of unemployment
2.6.2.4 Indian/Asian

1 000

Highest level of education	Male						Female						Total					
	Total	Not economy- cally active	Economically active				Total	Not economy- cally active	Economically active				Total	Not economy- cally active	Economically active			
			Total	Workers	Unem- ployed	Rate			Total	Workers	Unem- ployed	Rate			Total	Workers	Unem- ployed	Rate
Total	453	87	367	302	65	17.7	476	214	263	183	80	30.5	929	300	629	484	145	23.0
None	*	*	*	*	-	-	*	*	-	-	-	-	13	*	*	*	-	-
Grade 0 to Grade 3/Std 1	-	-	*	*	-	-	*	*	*	*	*	*	*	*	*	*	*	*
Grade 4/Std 2	*	*	*	*	*	*	*	*	*	*	-	-	*	*	*	*	*	*
Grade 5/Std 3	*	*	*	*	*	*	*	*	*	-	*	*	11	*	*	*	*	*
Grade 6/Std 4	*	*	*	*	*	*	*	*	*	*	*	*	17	*	*	*	*	*
Grade 7/Std 5	14	*	*	*	*	*	22	15	*	*	*	*	36	20	16	*	*	*
Grade 8/Std 6	28	11	17	*	*	*	43	30	14	*	*	*	71	41	31	18	12	40.5
Grade 9/Std 7	29	*	19	15	*	*	24	14	*	*	*	*	52	24	29	22	*	*
Grade 10/Std 8	62	18	43	35	*	*	58	31	27	20	*	*	119	49	70	55	16	22.1
Grade 11/Std 9	46	12	33	24	*	*	36	22	13	*	*	*	82	35	47	31	15	33.0
Grade 12/Std 10	170	20	150	123	27	17.7	179	59	120	82	38	31.6	349	79	270	206	65	23.9
NTC I - NTC III	*	-	*	*	-	-	*	*	*	*	-	-	*	*	*	*	-	-
Dipl./cert. with Grade 11/Std 9 or lower	*	*	*	*	-	-	*	*	*	*	*	*	18	*	13	12	*	*
Dipl./cert. with Grade 12/Std 10	28	*	27	26	*	*	23	*	17	13	*	*	52	*	44	39	*	*
Degree and higher	41	*	38	35	*	*	39	*	36	29	*	*	79	*	74	64	*	*
Other	-	-	-	-	-	-	*	-	-	-	-	-	*	*	-	-	-	-
Unspecified	*	-	*	*	-	-	*	*	*	*	-	-	*	*	*	*	-	-

* For all values of 10 000 or lower the sample size is too small for reliable estimates

- No respondents

2. Population of working age
2.6 By highest level of education, sex and labour market status
2.6.2 Expanded definition of unemployment
2.6.2.5 White

1 000

Highest level of education	Male						Female						Total					
	Total	Not economy- cally active	Economically active				Total	Not economy- cally active	Economically active				Total	Not economy- cally active	Economically active			
			Total	Workers	Unem- ployed	Rate			Total	Workers	Unem- ployed	Rate			Total	Workers	Unem- ployed	Rate
Total	1 571	333	1 237	1 159	78	6.3	1 537	565	972	857	115	11.9	3 108	899	2 209	2 016	193	8.8
None	*	*	-	-	-	-	*	*	*	*	-	-	*	*	*	*	-	-
Grade 0 to Grade 3/Std 1	-	-	-	-	-	-	*	*	*	*	-	-	*	*	-	-	-	-
Grade 4/Std 2	*	*	*	*	-	-	*	*	*	-	*	*	*	*	*	*	-	*
Grade 5/Std 3	-	-	-	-	-	-	*	-	*	-	*	*	*	-	*	-	*	*
Grade 6/Std 4	*	*	*	*	*	*	*	*	*	*	-	-	*	*	*	*	*	*
Grade 7/Std 5	15	*	*	*	*	*	11	*	*	*	*	*	25	16	*	*	*	*
Grade 8/Std 6	45	24	21	17	*	*	60	40	20	11	*	*	105	64	41	28	14	32.9
Grade 9/Std 7	69	40	28	26	*	*	61	42	19	*	*	*	130	82	47	35	12	25.4
Grade 10/Std 8	185	55	129	112	17	13.4	209	117	92	71	21	23.0	393	172	221	183	38	17.4
Grade 11/Std 9	82	47	35	32	*	*	92	51	42	35	*	*	174	98	76	67	9	12.4
Grade 12/Std 10	573	95	478	447	31	6.4	647	218	429	382	47	10.9	1 220	313	907	830	77	8.5
NTC I - NTC III	86	14	72	64	*	*	*	*	*	*	*	*	96	17	79	71	*	*
Dipl./cert. with Grade 11/Std 9 or lower	32	*	30	29	*	*	37	*	30	26	*	*	69	*	59	54	*	*
Dipl./cert. with Grade 12/Std 10	200	20	180	176	*	*	194	41	153	146	*	*	394	61	333	322	11	3.2
Degree and higher	263	19	244	240	*	*	196	29	167	159	*	*	460	48	412	398	13	3.2
Other	*	*	*	*	*	*	*	*	*	*	-	-	*	*	*	*	*	*
Unspecified	*	*	*	*	*	*	*	*	*	*	-	-	14	*	*	*	*	*

* For all values of 10 000 or lower the sample size is too small for reliable estimates

- No respondents

2. Population of working age

2.7 By definition of unemployment, work-related skills training, sex and labour market status

1 000

Definition of unemployment and work-related skills training	Male						Female						Total					
	Total	Not economically active	Economically active				Total	Not economically active	Economically active				Total	Not economically active	Economically active			
			Total	Workers	Unemployed	Rate			Total	Workers	Unemployed	Rate			Total	Workers	Unemployed	Rate
Official definition of unemployment																		
Total	12 981	4 792	8 188	6 049	2 139	26.1	14 384	7 214	7 170	4 783	2 386	33.3	27 365	12 006	15 358	10 833	4 525	29.5
Yes	1 690	208	1 482	1 176	306	20.7	1 248	282	966	705	262	27.1	2 938	490	2 448	1 880	568	23.2
No	11 078	4 504	6 575	4 770	1 805	27.4	12 913	6 809	6 105	4 012	2 092	34.3	23 992	11 312	12 679	8 782	3 897	30.7
Don't know	208	79	129	100	28	22.0	219	123	96	64	32	33.7	427	202	224	164	61	27.0
Unspecified	*	*	*	*	-	-	*	*	*	*	*	*	*	*	*	*	*	*
Expanded definition of unemployment																		
Total	12 981	3 651	9 330	6 049	3 280	35.2	14 384	5 183	9 201	4 783	4 418	48.0	27 365	8 834	18 531	10 833	7 698	41.5
Yes	1 690	118	1 572	1 176	397	25.2	1 248	180	1 068	705	363	34.0	2 938	298	2 640	1 880	760	28.8
No	11 078	3 476	7 602	4 770	2 832	37.3	12 913	4 908	8 006	4 012	3 993	49.9	23 992	8 384	15 608	8 782	6 825	43.7
Don't know	208	56	152	100	51	33.8	219	94	125	64	61	49.0	427	151	276	164	112	40.7
Unspecified	*	*	*	*	-	-	*	*	*	*	*	*	*	*	*	*	*	*

* For all values of 10 000 or lower the sample size is too small for reliable estimates

- No respondents

3. Workers (employers, employees and self-employed)

3.1 By main industry and sector

1 000

Main industry	Formal	Informal	Domestic	Unspecified	Total
Total	7 539	2 232	916	146	10 833
Agriculture, hunting, forestry and fishing	666	359	-	26	1 051
Mining and quarrying	484	*	-	*	487
Manufacturing	1 384	199	-	23	1 605
Electricity, gas and water supply	93	*	-	-	95
Construction	319	258	-	17	594
Wholesale and retail trade	1 427	937	-	34	2 397
Transport, storage and communication	429	104	-	*	543
Financial intermediation, insurance, real estate and business services	890	77	-	*	975
Community, social and personal services	1 812	163	-	13	1 988
Private households with employed persons	*	127	916	*	1 055
Exterior organisations and foreign government	*	-	-	-	*
Other	19	*	-	*	23
Unspecified	*	*	-	*	16

* For all values of 10 000 or lower the sample size is too small for reliable estimates

- No respondents

3. Workers (employers, employees and self-employed)

3.2 By main occupation and sector

1 000

Main occupation	Formal	Informal	Domestic	Unspecified	Total
Total	7 539	2 232	916	146	10 833
Legislators, senior officials and managers	592	63	-	*	661
Professionals	462	20	-	*	485
Technical and associate professionals	1 047	91	-	*	1 146
Clerks	1 060	33	-	*	1 101
Service workers and shop and market sales workers	997	380	-	19	1 396
Skilled agricultural and fishery workers	129	333	-	*	469
Craft and related trades workers	924	481	-	30	1 434
Plant and machine operators and assemblers	968	102	-	15	1 085
Elementary occupation	1 348	726	-	41	2 115
Domestic workers	-	-	916	-	916
Other	*	*	-	*	*
Unspecified	*	*	-	*	17

* For all values of 10 000 or lower the sample size is too small for reliable estimates

- No respondents

3. Workers (employers, employees and self-employed)

3.3 By population group, sex and sector

1 000

Population group and sex	Formal	Informal	Domestic	Unspecified	Total
All population groups					
Total	7 539	2 232	916	146	10 833
Male	4 679	1 251	26	93	6 049
Female	2 860	981	889	53	4 783
African					
Total	4 189	1 916	805	114	7 024
Male	2 727	1 055	23	78	3 882
Female	1 462	861	782	37	3 142
Coloured					
Total	1 030	145	102	*	1 284
Male	595	91	*	*	693
Female	435	54	100	*	591
Indian/Asian					
Total	439	41	*	*	484
Male	276	24	*	*	302
Female	163	18	*	-	183
White					
Total	1 860	129	*	22	2 016
Male	1 070	80	-	*	1 159
Female	790	48	*	14	857

* For all values of 10 000 or lower the sample size is too small for reliable estimates

- No respondents

Totals include other and unspecified population groups

3. Workers (employers, employees and self-employed)

3.4 By main industry, population group and sex

3.4.1 All sectors

1 000

Main industry	African			Coloured			Indian/Asian			White			Total		
	Total	Male	Female	Total	Male	Female	Total	Male	Female	Total	Male	Female	Total	Male	Female
Total	7 024	3 882	3 142	1 284	693	591	484	302	183	2 016	1 159	857	10 833	6 049	4 783
Agriculture, hunting, forestry and fishing	781	529	252	185	132	53	*	*	*	81	64	17	1 051	727	324
Mining and quarrying	401	393	*	11	*	*	*	*	-	76	68	*	487	470	17
Manufacturing	910	567	343	246	136	110	122	82	40	323	216	107	1 605	1 004	602
Electricity, gas and water supply	55	46	*	*	*	*	*	*	-	27	22	*	95	80	15
Construction	436	391	46	74	70	*	*	*	*	73	63	*	594	534	60
Wholesale and retail trade	1 604	730	874	244	116	128	157	105	53	386	231	155	2 397	1 186	1 212
Transport, storage and communication	327	289	38	61	51	*	34	26	*	119	83	36	543	448	94
Financial intermediation, insurance, real estate and business services	364	239	125	109	51	58	62	29	33	436	226	210	975	547	428
Community, social and personal services	1 200	550	651	220	103	117	87	45	42	476	178	298	1 988	878	1 110
Private households with employed persons	928	137	791	116	12	104	*	*	*	*	*	*	1 055	150	905
Exterior organisations and foreign government	*	*	*	-	-	-	-	-	-	-	-	-	*	*	*
Other	*	*	*	*	*	*	-	-	-	*	*	*	23	15	*
Unspecified	*	*	*	*	*	*	*	*	*	*	*	*	16	*	*

* For values of 10 000 or lower the sample size is too small for reliable estimates

- No respondents

Totals include other and unspecified population groups

3. Workers (employers, employees and self-employed)

3.4 By main industry, population group and sex

3.4.2 Formal sector

1 000

Main industry	African			Coloured			Indian/Asian			White			Total		
	Total	Male	Female	Total	Male	Female	Total	Male	Female	Total	Male	Female	Total	Male	Female
Total	4 189	2 727	1 462	1 030	595	435	439	276	163	1 860	1 070	790	7 539	4 679	2 860
Agriculture, hunting, forestry and fishing	420	297	123	167	118	48	*	*	*	76	61	15	666	478	188
Mining and quarrying	398	390	*	*	*	*	*	*	-	75	67	*	484	467	17
Manufacturing	732	496	237	228	129	99	118	79	38	302	202	99	1 384	909	475
Electricity, gas and water supply	53	44	*	*	*	*	*	*	-	27	22	*	93	79	14
Construction	202	180	22	52	49	*	10	*	*	54	45	*	319	284	34
Wholesale and retail trade	740	406	334	195	88	107	130	86	44	357	213	144	1 427	796	631
Transport, storage and communication	226	195	31	54	44	*	32	25	*	115	80	35	429	344	85
Financial intermediation, insurance, real estate and business services	318	207	111	103	48	55	61	27	33	404	206	198	890	491	399
Community, social and personal services	1 079	496	583	204	98	107	81	43	38	443	168	275	1 812	807	1 005
Private households with employed persons	*	*	*	*	*	-	-	-	-	-	-	-	*	*	*
Exterior organisations and foreign government	*	*	*	-	-	-	-	-	-	-	-	-	*	*	*
Other	*	*	*	*	*	*	-	-	-	*	*	*	19	12	*
Unspecified	*	*	*	*	-	*	*	*	*	-	-	-	*	*	*

* For values of 10 000 or lower the sample size is too small for reliable estimates

- No respondents

Totals include other and unspecified population groups

3. Workers (employers, employees and self-employed)

3.4 By main industry, population group and gender

3.4.3 Informal sector

1 000

Main industry	African			Coloured			Indian/Asian			White			Total		
	Total	Male	Female	Total	Male	Female	Total	Male	Female	Total	Male	Female	Total	Male	Female
Total	1 916	1 055	861	145	91	54	41	24	18	129	80	48	2 232	1 251	981
Agriculture, hunting, forestry and fishing	336	215	120	17	13	*	*	-	*	*	*	*	359	231	128
Mining and quarrying	*	*	-	-	*	*	-	-	-	-	-	-	*	*	*
Manufacturing	163	62	101	17	*	*	*	*	*	16	11	*	199	81	118
Electricity, gas and water supply	*	*	*	*	*	-	-	-	-	-	-	-	*	*	*
Construction	219	195	23	21	19	*	*	-	-	19	18	*	258	233	26
Wholesale and retail trade	836	307	529	49	28	21	27	18	*	24	17	*	937	371	566
Transport, storage and communication	92	85	*	*	*	-	*	*	*	*	*	-	104	96	*
Financial intermediation, insurance, real estate and business services	39	28	11	*	*	*	*	*	-	30	18	12	77	51	26
Community, social and personal services	113	53	61	15	*	*	*	*	*	30	*	20	163	68	95
Private households with employed persons	112	104	*	13	*	*	-	-	-	*	-	*	127	113	14
Other	*	*	*	-	-	-	-	-	-	-	-	-	*	*	*
Unspecified	-	-	-	*	-	*	-	-	-	-	-	-	*	-	*

* For values of 10 000 or lower the sample size is too small for reliable estimates

- No respondents

Totals include other and unspecified population groups

3. Workers (employers, employees and self-employed)

3.5 By monthly income and sector

1 000

Monthly income	Formal	Informal	Domestic	Unspecified	Total
Total	7 539	2 232	916	146	10 833
None	34	286	-	*	326
R1 - R500	671	928	590	34	2 223
R501 - R1 000	1 010	414	253	32	1 709
R1 001 - R2 500	2 273	328	51	29	2 681
R2 501 - R8 000	2 378	161	*	17	2 558
R8 001+	581	16	-	*	600
Don't know/Refused	562	86	17	11	676
Unspecified	30	14	*	14	60

* For all values of 10 000 or lower the sample size is too small for reliable estimates

- No respondents

3. Workers (employees, employers and self-employed)

3.6 By highest level of education and sector

1 000

Highest level of education	Formal	Informal	Domestic	Unspecified	Total
Total	7 539	2 232	916	146	10 833
None	302	254	126	13	694
Grade 0 to Grade 3/Std 1	220	154	81	*	464
Grade 4/Std 2	160	114	54	*	334
Grade 5/Std 3	185	125	79	*	395
Grade 6/Std 4	281	174	83	*	547
Grade 7/Std 5	418	224	127	12	782
Grade 8/Std 6	472	225	115	14	826
Grade 9/Std 7	390	179	71	*	648
Grade 10/Std 8	686	219	71	12	989
Grade 11/Std 9	458	152	38	*	656
Grade 12/Std 10	2 127	284	55	31	2 496
NTC I - NTC III	100	*	*	*	112
Dipl./cert. with Grade 11/Std 9 or lower	122	15	-	*	137
Dipl./cert. with Grade 12/Std 10	816	57	*	*	880
Degree/higher	704	24	*	*	734
Other	11	-	-	-	12
Unspecified	87	23	11	*	127

* For all values of 10 000 or lower the sample size is too small for reliable estimates

- No respondents

3. Workers (employers, employees and self-employed)

3.7 By highest level of education and monthly income

3.7.1 All population groups

1,000

Highest level of education	None	R1-R500	R501-R1 000	R1 001-R2 500	R2 501-R8 000	R8 001 or more	Unspecified	Total
Total	326	2,223	1,709	2,681	2,558	600	736	10,833
None	30	366	149	113	19	*	16	694
Grade 0 to Grade 3/Std 1	21	209	99	109	13	*	*	464
Grade 4/Std 2	19	135	82	79	11	*	*	334
Grade 5/Std 3	18	162	95	91	18	*	*	395
Grade 6/Std 4	24	199	130	145	32	*	12	547
Grade 7/Std 5	35	240	210	226	50	*	19	782
Grade 8/Std 6	38	213	187	256	91	*	34	826
Grade 9/Std 7	31	157	132	210	84	*	26	648
Grade 10/Std 8	23	162	169	328	212	27	67	989
Grade 11/Std 9	26	119	132	222	111	12	34	656
Grade 12/Std 10	47	205	254	653	914	165	259	2,496
NTC I-III	-	*	*	14	51	17	20	112
Dipl./cert. with Grade 11/Std 9 or lower	*	*	*	25	67	17	12	137
Dipl./cert. with Grade 12/Std 10	*	20	24	129	516	110	76	880
Degree and higher	*	*	*	40	348	224	102	734
Other	*	*	-	*	*	*	-	12
Unspecified	*	17	21	35	16	*	35	127

* For all values of 10 000 or lower the sample size is too small for reliable estimates

- No respondents

3. Workers (employers, employees and self-employed)

3.7 By highest level of education and monthly income

3.7.2 African

1,000

Highest level of education	None	R1-R500	R501-R1 000	R1 001-R2 500	R2 501-R8 000	R8 001 or more	Unspecified	Total
Total	297	1,996	1,388	1,911	1,084	90	257	7,024
None	29	336	135	103	16	*	15	634
Grade 0 to Grade 3/Std 1	21	189	84	98	12	*	*	415
Grade 4/Std 2	19	127	72	71	*	*	*	303
Grade 5/Std 3	18	149	82	77	13	*	*	348
Grade 6/Std 4	24	181	105	120	23	*	*	462
Grade 7/Std 5	34	215	175	184	35	*	12	655
Grade 8/Std 6	38	184	152	189	53	*	21	640
Grade 9/Std 7	29	140	104	151	40	*	15	482
Grade 10/Std 8	21	143	132	211	64	*	28	603
Grade 11/Std 9	23	110	114	155	52	*	18	474
Grade 12/Std 10	32	180	189	397	291	16	57	1,162
NTC I-III	-	*	*	*	*	*	*	26
Dipl./cert. with Grade 11/Std 9 or lower	*	*	*	13	30	*	*	56
Dipl./cert. with Grade 12/Std 10	*	18	19	83	278	17	17	434
Degree and higher	*	*	*	22	148	40	16	234
Other	-	*	-	*	*	*	-	*
Unspecified	*	15	14	28	11	*	22	94

* For all values of 10 000 or lower the sample size is too small for reliable estimates

- No respondents

3. Workers (employers, employees and self-employed)

3.7 By highest level of education and monthly income

3.7.3 Coloured

1,000

Highest level of education	None	R1-R500	R501-R1 000	R1 001-R2 500	R2 501-R8 000	R8 001 or more	Unspecified	Total
Total	*	181	227	402	314	32	121	1,284
None	*	25	14	*	*	-	*	53
Grade 0 to Grade 3/Std 1	-	19	15	*	*	*	*	47
Grade 4/Std 2	-	*	*	*	*	-	*	29
Grade 5/Std 3	*	13	12	15	*	-	*	46
Grade 6/Std 4	*	18	24	22	*	*	*	76
Grade 7/Std 5	*	24	30	36	*	-	*	107
Grade 8/Std 6	*	28	29	50	24	*	*	139
Grade 9/Std 7	*	13	24	46	18	*	*	110
Grade 10/Std 8	*	13	23	55	36	*	15	146
Grade 11/Std 9	*	*	11	33	24	*	*	82
Grade 12/Std 10	*	*	25	93	105	*	46	290
NTC I-III	-	-	*	*	*	*	*	*
Dipl./cert. with Grade 11/Std 9 or lower	-	*	*	*	*	*	*	15
Dipl./cert. with Grade 12/Std 10	-	*	*	13	50	*	11	82
Degree and higher	-	*	*	*	15	11	*	32
Other	-	-	-	*	*	-	*	*
Unspecified	-	*	*	*	*	-	*	21

* For all values of 10 000 or lower the sample size is too small for reliable estimates

- No respondents

3. Workers (employers, employees and self-employed)

3.7 By highest level of education and monthly income

3.7.4 Indian/Asian

1 000

Highest level of education	None	R1 - R500	R501 - R1 000	R1 001 - R2 500	R2 501 - R8 000	R8 001 or more	Unspecified	Total
Total	*	13	41	129	205	37	53	484
None	-	*	-	*	*	-	-	*
Grade 0 to Grade 3/Std 1	-	-	*	*	*	-	-	*
Grade 4/Std 2	-	-	*	*	-	-	-	*
Grade 5/Std 3	-	-	*	-	*	-	-	*
Grade 6/Std 4	-	*	*	*	*	*	-	*
Grade 7/Std 5	-	*	*	*	*	*	-	*
Grade 8/Std 6	-	*	*	*	*	*	*	18
Grade 9/Std 7	*	*	*	*	*	*	*	22
Grade 10/Std 8	-	*	*	19	22	*	*	55
Grade 11/Std 9	-	*	*	12	*	*	*	31
Grade 12/Std 10	*	*	15	59	95	11	19	206
NTC I	-	-	*	*	*	-	*	*
Dipl./cert. with Grade 11/Std 9 or lower	-	*	*	*	*	*	*	12
Dipl./cert. with Grade 12/Std 10	-	*	*	*	21	*	*	39
Degree and higher	-	*	*	*	34	*	14	64
Unspecified	-	-	*	*	-	-	*	*

* For all values of 10 000 or lower the sample size is too small for reliable estimates

- No respondents

3. Workers (employers, employees and self-employed)

3.7 By highest level of education and monthly income

3.7.5 White

1 000

Highest level of education	None	R1 - R500	R501 - R1 000	R1 001 - R2 500	R2 501 - R8 000	R8 001 or more	Unspecified	Total
Total	13	34	52	236	948	432	301	2 016
None	-	*	-	-	-	-	-	*
Grade 0 to Grade 3/Std 1	-	-	-	-	-	-	-	*
Grade 4/Std 2	-	-	-	-	*	-	-	*
Grade 5/Std 3	-	-	-	-	-	-	-	-
Grade 6/Std 4	-	-	-	*	-	-	*	*
Grade 7/Std 5	-	-	*	*	*	*	-	*
Grade 8/Std 6	-	-	*	*	*	*	*	28
Grade 9/Std 7	*	*	*	*	17	*	*	35
Grade 10/Std 8	*	*	*	42	89	20	18	183
Grade 11/Std 9	*	*	*	20	27	*	*	67
Grade 12/Std 10	*	14	24	102	419	128	136	830
NTC I - NTC III	-	-	*	*	36	15	13	71
Dipl./cert. with Grade 11/Std 9 or lower	-	*	*	*	25	13	*	54
Dipl./cert. with Grade 12/Std 10	*	*	*	28	168	78	42	322
Degree and higher	*	*	*	12	149	162	65	398
Other	*	-	-	*	*	*	-	*
Unspecified	-	-	*	-	*	-	*	*

* For all values of 10 000 or lower the sample size is too small for reliable estimates

- No respondents

3. Workers (employers, employees and self-employed)

3.8 With degrees, diplomas and certificates by field of study and monthly income

1 000

Field of study	None	R1 - R500	R501 - R1 000	R1 001 - R2 500	R2 501 - R8 000	R8 001 or more	Unspecified	Total
Total	*	34	42	195	931	351	190	1 752
Communication studies and language	-	*	*	*	13	*	*	33
Education, training and development	*	*	*	64	353	33	41	510
Manufacturing, engineering and technology	*	*	*	19	79	57	27	186
Human and social studies	*	*	*	*	27	15	*	60
Law, military science and security	*	*	*	*	47	26	14	100
Health sciences and social services	*	*	*	15	123	32	25	204
Agriculture and nature conservation	-	*	*	*	21	12	*	50
Culture and arts	*	*	*	*	25	14	*	50
Business, commerce and management studies	*	*	12	30	156	109	41	357
Physical, mathematical, computer and life sciences	*	*	*	18	38	31	11	104
Services	-	*	*	*	*	*	*	28
Physical planning and construction	-	-	*	*	*	*	*	12
Don't know	-	-	-	*	*	-	-	*
Unspecified	*	*	*	*	32	*	*	55

* For all values of 10 000 or lower the sample size is too small for reliable estimates

- No respondents

3. Workers (employers, employees and self-employed)

3.9 By main industry and monthly income

1 000

Main industry	None	R1 - R500	R501 - R1 000	R1 001 - R2 500	R2 501 - R8 000	R8 001 or more	Unspecified	Total
Total	326	2 223	1 709	2 681	2 558	600	736	10 833
Agriculture, hunting, forestry and fishing	195	445	228	82	48	20	32	1 051
Mining and quarrying	-	*	36	289	106	30	20	487
Manufacturing	*	168	248	571	387	120	101	1 605
Electricity, gas and water supply	-	*	*	30	34	17	*	95
Construction	22	109	126	189	88	19	41	594
Wholesale and retail trade	86	633	454	602	360	75	187	2 397
Transport, storage and communication	*	31	78	147	200	45	41	543
Financial intermediation, insurance, real estate and business services	*	42	89	251	330	147	111	975
Community, social and personal services	*	104	146	454	997	124	159	1 988
Private households with employed persons	*	680	292	59	*	-	20	1 055
Exterior organisations and foreign government	-	-	-	*	-	*	*	*
Other	-	*	*	*	*	*	*	23
Unspecified	*	-	-	-	-	-	15	16

* For all values of 10 000 or lower the sample size is too small for reliable estimates

- No respondents

3. Workers (employers, employees and self-employed)

3.10 By main occupation and monthly income

1 000

Main occupation	None	R1 - R500	R501 - R1 000	R1 001 - R2 500	R2 501 - R8 000	R8 001 or more	Unspecified	Total
Total	326	2 223	1 709	2 681	2 558	600	736	10 833
Legislators, senior officials and managers	*	*	15	54	268	223	88	661
Professionals	*	*	*	22	258	138	58	485
Technical and associate professionals	*	40	44	209	634	96	117	1 146
Clerks	*	47	90	303	498	40	114	1 101
Service workers and shop and market sales workers	55	268	250	439	271	26	87	1 396
Skilled agricultural and fishery workers	158	121	68	50	35	16	21	469
Craft and related trades workers	27	229	249	518	285	41	84	1 434
Plant and machine operators and assemblers	*	113	206	516	191	11	46	1 085
Elementary occupation	65	798	530	515	113	*	85	2 115
Domestic workers	*	590	253	51	*	-	18	916
Occupation not adequately defined	-	*	*	*	*	*	*	*
Unspecified	-	-	-	-	*	-	16	17

* For all values of 10 000 or lower the sample size is too small for reliable estimates

- No respondents

3. Workers (employers, employees and self-employed)

3.11 By employment status

3.11.1 By sector and sex

1 000

Employment status and sex	Formal	Informal	Domestic worker	Unspecified	Total
Total workers					
Total	7 539	2 232	916	146	10 833
Working for someone else	6 996	601	19	111	7 727
Working for one or more private households as a domestic employee, gardener or security guard	15	127	896	*	1 040
Working on his/her own small farm/plot or collecting natural products from the forest or sea	*	235	-	*	246
Working on his/her own or with a partner, in any type of business (including commercial farms)	488	1 173	*	18	1 679
Helping without pay in a family business	31	96	-	*	128
Unspecified	*	*	-	*	13
Male					
Total	4 679	1 251	26	93	6 049
Working for someone else	4 294	427	*	70	4 794
Working for one or more private households as a domestic employee, gardener or security guard	12	111	22	*	147
Working on his/her own small farm/plot or collecting natural products from the forest or sea	*	136	-	*	143
Working on his/her own or with a partner, in any type of business (including commercial farms)	355	541	-	13	909
Helping without pay in a family business	12	36	-	*	49
Unspecified	*	-	-	*	*

3. Workers (employers, employees and self-employed)

3.11 By employment status

3.11.1 By sector and sex (concluded)

1 000

Employment status and sex	Formal	Informal	Domestic worker	Unspecified	Total
Female					
Total	2 860	981	889	53	4 783
Working for someone else	2 702	174	15	42	2 933
Working for one or more private households as a domestic employee, gardener or security guard	*	16	874	-	893
Working on his/her own small farm/plot or collecting natural products from the forest or sea	*	99	-	*	103
Working on his/her own or with a partner, in any type of business (including commercial farms)	133	632	*	*	770
Helping without pay in a family business	19	60	-	-	79
Unspecified	*	*	-	*	*

* For all values of 10 000 or lower the sample size is too small for reliable estimates

- No respondents

3. Workers (employers, employees and self-employed)

3.11 By employment status

3.11.2 By sector, population group and sex

1 000

Employment status and sector	African			Coloured			Indian/Asian			White			Total		
	Total	Male	Female	Total	Male	Female	Total	Male	Female	Total	Male	Female	Total	Male	Female
Formal sector															
Total	4 189	2 727	1 462	1 030	595	435	439	276	163	1 860	1 070	790	7 539	4 679	2 860
Working for someone else for pay	4 053	2 641	1 412	1 011	580	431	375	224	150	1 542	841	701	6 996	4 294	2 702
Working for one or more private households as a domestic employee, gardener or security guard	14	11	*	*	*	-	-	-	-	-	*	-	15	12	*
Working on his/her own or on a small family farm/plot or collecting natural products from the forest or sea	*	*	*	-	-	-	-	-	-	*	*	*	*	*	*
Working on his/her own or with a partner, in any type of business (including commercial farms)	103	65	38	18	14	*	58	48	*	303	224	80	488	355	133
Helping without pay in a family business	17	*	*	-	-	-	*	*	*	*	*	*	31	12	19
Unspecified	-	-	-	-	-	-	*	*	*	-	-	-	*	*	*
Informal sector															
Total	1 916	1 055	861	145	91	54	41	24	18	129	80	48	2 232	1 251	981
Working for someone else for pay	496	360	136	61	41	19	12	*	*	32	19	13	601	427	174
Working for one or more private households as a domestic employee, gardener or security guard	112	102	*	13	*	*	-	-	-	*	*	*	127	111	16
Working on his/her own or on a small family farm/plot or collecting natural products from the forest or sea	226	131	95	*	*	*	*	-	*	*	*	*	235	136	99
Working on his/her own or with a partner, in any type of business (including commercial farms)	996	429	567	61	35	26	26	17	*	88	59	29	1 173	541	632
Helping without pay in a family business	87	33	54	*	*	*	*	*	*	*	*	*	96	36	60
Unspecified	-	-	-	*	-	*	-	-	-	-	-	-	*	-	*

* For all values of 10 000 and lower the sample size is too small for reliable estimates

- No respondents

Totals include other and unspecified population groups

Informal sector excludes domestic workers

3. Workers (employers, employees and self-employed)

3.12 Conditions of work of employees

3.12.1 By main industry and existence of written contract

1 000

Main industry	Written contract			
	Yes	No	Unspecified	Total
Total	4 611	3 823	332	8 767
Agriculture, hunting, forestry and fishing	239	486	18	742
Mining and quarrying	405	70	*	484
Manufacturing	864	477	68	1 410
Electricity, gas and water supply	73	19	*	95
Construction	156	249	22	427
Wholesale and retail trade	669	637	85	1 392
Transport, storage and communication	256	191	20	466
Financial intermediation, insurance, real estate and business services	576	218	29	823
Community, social and personal services	1 264	534	49	1 847
Private households with employed persons	92	935	27	1 054
Exterior organisations and foreign government	*	*	-	*
Other	12	*	*	21
Unspecified	*	-	-	*

* For all values of 10 000 or lower the sample size is too small for reliable estimates

- No respondents

Table excludes employers, self-employees and those working without pay

3. Workers (employers, employees and self-employed)

3.12 Conditions of work of employees

3.12.2 By main industry and terms of employment

1 000

Main industry	Terms of employment							
	Permanent	A fixed period contract	Temporary	Casual	Seasonal	Don't know	Unspecified	Total
Total	6 757	297	979	586	67	66	15	8 767
Agriculture, hunting, forestry and fishing	516	20	117	37	46	*		742
Mining and quarrying	422	49	11	*	-	*		484
Manufacturing	1 159	46	126	70	*	*	*	1 410
Electricity, gas and water supply	81	*	*	*	-	-		95
Construction	212	34	109	59	*	*	*	427
Wholesale and retail trade	1 004	20	160	186	*	15	*	1 392
Transport, storage and communication	380	*	49	24	*	*		466
Financial intermediation, insurance, real estate and business services	704	35	53	24	*	*	*	823
Community, social and personal services	1 652	60	96	29	*	*	*	1 847
Private households with employed persons	604	21	249	154	*	19	*	1 054
Exterior organisations and foreign government	*	*	*	-	-	-		*
Other	17	-	*	*	-	-	*	21
Unspecified	*	-	-	-	-	-		*

* For all values of 10 000 or lower the sample size is too small for reliable estimates

- No respondents

Table excludes employers, self-employed and those working without pay

3. Workers (employers, employees and self-employed)

3.12 Conditions of work of employees

3.12.3 By main industry and paid leave status

1 000

Main industry	Paid leave			
	Yes	No	Unspecified	Total
Total	5 115	3 410	242	8 767
Agriculture, hunting, forestry and fishing	224	508	11	742
Mining and quarrying	434	47	*	484
Manufacturing	941	426	43	1 410
Electricity, gas and water supply	75	19	*	95
Construction	140	268	19	427
Wholesale and retail trade	723	606	63	1 392
Transport, storage and communication	295	156	15	466
Financial intermediation, insurance, real estate and business services	592	205	26	823
Community, social and personal services	1 493	316	39	1 847
Private households with employed persons	181	854	19	1 054
Exterior organisations and foreign government	*	*	-	*
Other	12	*	*	21
Unspecified	*	*	-	*

* For all values of 10 000 or lower the sample size is too small for reliable estimates

- No respondents

Table excludes employers, self-employed and those working without pay

3. Workers (employers, employees and self-employed)

3.12 Conditions of work of employees

3.12.4 By main industry and trade union membership

1 000

Main industry	Trade union membership			
	Yes	No	Unspecified	Total
Total	2 827	5 573	367	8 767
Agriculture, hunting, forestry and fishing	64	671	*	742
Mining and quarrying	379	99	*	484
Manufacturing	515	808	87	1 410
Electricity, gas and water supply	48	39	*	95
Construction	70	333	24	427
Wholesale and retail trade	274	1 044	73	1 392
Transport, storage and communication	161	279	27	466
Financial intermediation, insurance, real estate and business services	192	591	40	823
Community, social and personal services	1 102	670	75	1 847
Private households with employed persons	15	1 022	16	1 054
Exterior organisations and foreign government	*	*	-	*
Other	*	14	*	21
Unspecified	*	*	*	*

* For all values of 10 000 or lower the sample size is too small for reliable estimates

- No respondents

Table excludes employers, self-employed and those working without pay

3. Workers (employers, employees and self-employed)

3.12 Conditions of work of employees

3.12.5 By main industry and provision for, or contribution towards, medical aid or health insurance

1 000

Main industry	Medical aid fund/ health insurance				
	Employee only	Employee and dependants	None	Unspecified	Total
Total	1 011	1 541	6 009	206	8 767
Agriculture, hunting, forestry and fishing	18	12	702	*	742
Mining and quarrying	144	77	258	*	484
Manufacturing	157	270	942	40	1 410
Electricity, gas and water supply	20	33	41	*	95
Construction	19	26	375	*	427
Wholesale and retail trade	98	134	1 107	53	1 392
Transport, storage and communication	75	118	259	14	466
Financial intermediation, insurance, real estate and business services	144	191	468	19	823
Community, social and personal services	326	666	812	44	1 847
Private households with employed persons	*	*	1 030	11	1 054
Exterior organisations and foreign government	*	*	*	-	*
Other	*	*	12	*	21
Unspecified	-	*	-	*	*

* For all values of 10 000 or lower the sample size is too small for reliable estimates

- No respondents

Table excludes employers, self-employed and those working without pay

3. Workers (employers, employees and self-employed)

3.13 By main industry and provision for, or contribution towards, medical aid or health insurance

3.13.1 Formal sector

1 000

Main industry	Medical aid fund/ health insurance				
	Worker only	Worker and dependants	None	Unspecified	Total
Total	1 036	1 587	4 752	164	7 539
Agriculture, hunting, forestry and fishing	28	24	609	*	666
Mining and quarrying	144	77	258	*	484
Manufacturing	161	275	915	33	1 384
Electricity, gas and water supply	19	33	40	*	93
Construction	17	30	265	*	319
Wholesale and retail trade	104	153	1 125	45	1 427
Transport, storage and communication	76	120	222	11	429
Financial intermediation, insurance, real estate and business services	156	204	512	18	890
Community, social and personal services	326	662	784	40	1 812
Private households with employed persons	-	*	*	*	*
Exterior organisations and foreign government	*	*	*	*	*
Other	*	*	11	*	19
Unspecified	*	*	*	*	*

* For all values of 10 000 or lower the sample size is too small for reliable estimates

- No respondents

3. Workers (employers, employees and self-employed)

3.13 By main industry and provision for, or contribution towards, medical aid or health insurance

3.13.2 Informal sector

1 000

Main industry	Medical aid fund/ health insurance				
	Worker only	Worker and dependants	None	Unspecified	Total
Total	21	44	2 145	22	2 232
Agriculture, hunting, forestry and fishing	*	*	348	*	359
Mining and quarrying	*	-	*	-	*
Manufacturing	*	*	193	*	199
Electricity, gas and water supply	*	-	*	-	*
Construction	*	*	250	*	258
Wholesale and retail trade	*	15	911	*	937
Transport, storage and communication	-	*	98	*	104
Financial intermediation, insurance, real estate and business services	*	*	68	*	77
Community, social and personal services	*	12	142	*	163
Private households with employed persons	*	*	126	*	127
Other	-	-	*	-	*
Unspecified	-	-	*	-	*

* For all values of 10 000 or lower the sample size is too small for reliable estimates

- No respondents

3. Workers (employers, employees and self-employed)

3.14 By main industry and location of business

3.14.1 Formal sector

1 000

Main industry	Location of business								
	Owner's home/farm	In someone else's home	Formal business premises (factory or office)	At a service outlet (shop, school, post office etc)	At a market	On a foot path, street corner, open space or field	No fixed location	Unspecified	Total
Total	722	53	4,411	1,952	17	128	210	45	7,539
Agriculture, hunting, forestry and fishing	505	12	105	*	-	22	*	*	666
Mining and quarrying	*	*	450	*	*	18	*	*	484
Manufacturing	27	*	1,231	97	*	14	*	*	1,384
Electricity, gas and water supply	*	-	74	12	-	*	*	-	93
Construction	21	*	171	29	-	*	81	*	319
Wholesale and retail trade	63	*	607	700	13	22	12	*	1,427
Transport, storage and communication	13	*	295	51	-	18	45	*	429
Financial intermediation, insurance, real estate and business services	50	*	672	133	*	*	23	*	890
Community, social and personal services	33	*	783	917	*	21	27	21	1,812
Private households with employed persons	*	*	*	-	-	-	*	-	*
Exterior organisations and foreign government	-	-	*	*	-	-	-	-	*
Other	*	-	17	*	-	-	-	-	19
Unspecified	-	-	*	-	-	-	-	*	*

* For all values of 10 000 or lower the sample size is too small for reliable estimates

- No respondents

3. Workers (employers, employees and self-employed)

3.14 By main industry and location of business

3.14.2 Informal sector

1 000

Main industry	Owner's home/farm	In someone else's home	Formal business premises (factory or office)	At a service outlet (shop, school, post office etc)	At a market	On a foot path, street corner, open space or field	No fixed location	Unspecified	Total
Total	1 227	182	87	142	15	142	422	13	2 232
Agriculture, hunting, forestry and fishing	289	15	*	*	-	23	21	*	359
Mining and quarrying	*	-	*	-	-	*		*	*
Manufacturing	123	*	23	12	*	*	21	*	199
Electricity, gas and water supply	*	-	-	*	-	*	*	-	*
Construction	67	34	*	*	-	*	144	*	258
Wholesale and retail trade	561	29	15	75	13	85	155	*	937
Transport, storage and communication	24	*	*	*	-	*	52	*	104
Financial intermediation, insurance, real estate and business services	36	*	16	*	-	*	11	-	77
Community, social and personal services	74	16	16	38	*	*	*	*	163
Private households with employed persons	51	67	*	*	-	*	*	-	127
Exterior organisations and foreign government		-	-	-	-	-	-	-	-
Other	*	*	-	-	-	-	*	-	*
Unspecified	-	*	-	-	-	-	-	-	*

* For all values of 10 000 or lower the sample size is too small for reliable estimates

- No respondents

3. Workers (employees, employers and self-employed)
3.15 By main industry and number of regular workers in the business

1 000

Main industry	Number of regular workers							
	1	2 - 4	5 - 9	10 - 19	20 - 49	50 or more	Unspecified	Total
Total	2 099	1 561	1 041	1 296	1 497	2 936	404	10 833
Agriculture, hunting, forestry and fishing	163	198	145	164	163	203	16	1 051
Mining and quarrying	*	16	24	28	25	376	15	487
Manufacturing	114	123	111	170	262	749	76	1 605
Electricity, gas and water supply	*	*	*	*	16	50	*	95
Construction	76	150	77	96	88	85	23	594
Wholesale and retail trade	656	510	302	287	260	292	92	2 397
Transport, storage and communication	78	73	38	42	71	215	26	543
Financial intermediation, insurance, real estate and business services	69	118	116	150	163	323	36	975
Community, social and personal services	119	187	193	331	437	628	93	1 988
Private households with employed persons	815	178	21	18	*	*	*	1 055
Exterior organisations and foreign government	-	-	*	*	-	-	-	*
Other	*	*	*	*	*	*	*	23
Unspecified	*	-	-	*	-	*	14	16

* For all values of 10 000 or more the sample size is too small for reliable estimates

- No respondents

3. Workers (employers, employees and self-employed)

3.16 By main industry and whether the business is a registered company or close corporation

1 000

Main industry	Registered company or close corporation			
	Yes	No	Unspecified	Total
Total	6 424	4 023	386	10 833
Agriculture, hunting, forestry and fishing	642	361	49	1 051
Mining and quarrying	478	*	*	487
Manufacturing	1 333	209	63	1 605
Electricity, gas and water supply	75	17	*	95
Construction	274	285	35	594
Wholesale and retail trade	1 349	960	88	2 397
Transport, storage and communication	405	114	25	543
Financial intermediation, insurance, real estate and business services	865	90	20	975
Community, social and personal services	928	999	61	1 988
Private households with employed persons	53	979	23	1 055
Exterior organisations and foreign government	*	-	-	*
Other	18	*	*	23
Unspecified	*	*	13	16

* For all values of 10 000 or lower the sample size is too small for reliable estimates

- No respondents

3. Workers (employers, employees and self-employed)

3.17 By main industry and deduction of UIF contributions

1 000

Main industry	Deduction of UIF contributions				
	Yes	No (income is above UIF limit)	No (other reasons)	Unspecified	Total
Total	4 363	702	5 342	426	10 833
Agriculture, hunting, forestry and fishing	278	29	714	30	1 051
Mining and quarrying	332	42	105	*	487
Manufacturing	968	98	465	75	1 605
Electricity, gas and water supply	64	*	17	*	95
Construction	161	28	375	31	594
Wholesale and retail trade	769	121	1 413	95	2 397
Transport, storage and communication	275	43	204	21	543
Financial intermediation, insurance, real estate and business services	556	85	288	46	975
Community, social and personal services	909	185	817	77	1 988
Private households with employed persons	35	62	936	22	1 055
Exterior organisations and foreign government	*	-	*	*	*
Other	11	*	*	*	23
Unspecified	*	*	-	11	16

* For all values of 10 000 or lower the sample size is too small for reliable estimates

- No respondents

4. The unemployed

4.1 By area, age, population group and sex

4.1.1 Official definition of unemployment

1 000

Area and age group	African			Coloured			Indian/Asian			White			Total		
	Total	Male	Female	Total	Male	Female	Total	Male	Female	Total	Male	Female	Total	Male	Female
RSA															
Total	3 929	1 848	2 081	358	178	180	109	53	56	128	60	68	4 525	2 139	2 386
15-24	1 147	549	598	147	76	71	48	21	27	29	16	13	1 372	663	709
25-34	1 704	764	941	102	45	58	31	17	14	44	16	28	1 881	841	1 041
35-44	730	355	375	69	33	36	14	*	*	25	12	13	839	407	431
45-54	271	132	139	35	20	14	*	*	*	19	*	*	334	165	169
55+	77	48	29	*	*	*	*	*	*	11	*	*	99	62	37
Urban															
Total	2 362	1 109	1 253	333	168	165	107	52	56	118	56	62	2 922	1 385	1 536
15-24	632	291	341	135	71	65	47	21	27	28	15	12	843	399	445
25-34	1 040	469	571	95	42	53	31	17	14	40	16	24	1 206	544	662
35-44	472	233	239	65	32	33	14	*	*	23	*	13	575	282	292
45-54	168	84	84	34	20	14	*	*	*	18	*	*	228	116	112
55+	49	31	18	*	*	*	*	*	*	*	*	*	69	44	25
Non-urban															
Total	1 567	739	828	25	11	15	*	*	*	*	*	*	1 604	754	850
15-24	515	258	257	12	*	*	*	*	*	*	*	*	529	265	264
25-34	664	294	370	*	*	*	-	-	-	*	*	*	676	297	379
35-44	258	122	136	*	*	*	-	-	-	*	*	-	264	125	139
45-54	102	47	55	*	*	*	*	*	-	*	*	*	105	49	56
55+	28	17	11	*	*	*	-	-	-	*	*	*	30	18	12

* For all values of 10 000 or more the sample size is too small for reliable estimates

- No respondents

Totals include other and unspecified population groups

4. The unemployed

4.1 By area, age, population group and sex

4.1.2 Expanded definition of unemployment

1 000

Area and age group	African			Coloured			Indian/Asian			White			Total		
	Total	Male	Female	Total	Male	Female	Total	Male	Female	Total	Male	Female	Total	Male	Female
RSA															
Total	6 774	2 881	3 893	582	254	328	145	65	80	193	78	115	7 698	3 280	4 418
15-24	2 165	948	1 218	243	114	129	58	25	33	48	22	26	2 517	1 111	1 406
25-34	2 716	1 107	1 609	168	61	107	42	20	22	59	20	39	2 986	1 208	1 778
35-44	1 212	511	701	108	44	64	24	*	14	44	17	27	1 389	582	807
45-54	535	230	305	51	27	24	14	*	*	30	12	18	630	274	356
55+	145	85	60	11	*	*	*	*	*	12	*	*	177	106	71
Urban															
Total	3 361	1 468	1 893	514	235	279	142	64	78	179	74	105	4 198	1 842	2 356
15-24	925	400	525	213	105	108	57	24	32	45	21	24	1 241	552	689
25-34	1 440	607	833	147	55	92	41	20	21	54	20	35	1 682	702	980
35-44	661	296	365	96	41	55	24	*	14	41	15	26	822	361	460
45-54	261	120	141	48	26	22	13	*	*	28	12	17	351	162	189
55+	74	45	29	*	*	*	*	*	*	11	*	*	103	65	38
Non-urban															
Total	3 413	1 413	2 000	67	18	49	*	*	*	14	*	*	3 500	1 438	2 062
15-24	1 241	548	693	30	*	21	*	*	*	*	*	*	1 276	558	717
25-34	1 277	500	776	21	*	15	*	-	*	*	*	*	1 304	506	798
35-44	552	216	336	12	*	*	-	-	-	*	*	*	567	220	347
45-54	273	110	163	*	*	*	*	*	-	*	*	*	279	112	167
55+	71	40	31	*	*	*	-	-	-	*	*	*	74	41	33

* For all values of 10 000 or more the sample size is too small for reliable estimates

- No respondents

Totals include other and unspecified population groups

4. The unemployed

4.2 By duration of job seeking, age and whether they have worked before

1 000

Duration of job seeking	15-30 years			31-46 years			47-65 years			Total		
	Total	Worked before	Never worked	Total	Worked before	Never worked	Total	Worked before	Never worked	Total	Worked before	Never worked
Total	2 716	776	1 938	1 463	998	465	347	298	49	4 525	2 072	2 452
Less than a month	168	64	104	87	62	25	21	17	*	276	144	132
1 month - < 2 months	126	43	83	59	46	13	15	13	*	200	102	97
2 months - < 3 months	111	43	68	39	32	*	*	*	*	159	84	75
3 months - < 4 months	103	38	65	39	26	13	*	*	*	149	70	79
4 months - < 6 months	104	31	72	47	37	*	14	14	*	165	82	83
6 months - < 1 year	389	107	282	112	90	22	28	25	*	529	223	307
1 year - < 3 years	830	214	615	306	230	76	66	61	*	1 202	506	695
3 years- > 3 years	828	219	609	735	447	288	175	146	30	1 738	812	927
Not applicable	29	*	19	16	14	*	*	*	*	49	26	23
Don't know/Unspecified	28	*	21	22	13	*	*	*	*	58	23	34

* For all values of 10 000 or lower the sample size is too small for reliable estimates

Totals exclude unspecified period of job seeking and whether a person has worked before

4. The unemployed

4.3 Unemployed persons who have worked before by duration of unemployment and previous industry

4.3.1 Official definition of unemployment

1 000

Duration of unemployment	Previous industry										
	Agriculture, hunting and forestry	Mining	Manufacturing	Electricity, gas and water	Construction	Wholesale and retail trade	Transport, storage and communication	Finance and business services	Community, social and personal services	Private households	Total**
Total	121	84	461	21	204	462	98	145	168	297	2 072
1 week - < 1 month	*	*	*	*	15	11	*	*	*	11	58
1 month - < 2 months	*	*	13	*	*	14	*	*	*	*	64
2 months - < 3 months	*	*	11	*	11	16	*	*	*	*	73
3 months - < 4 months	*	*	13	*	*	11	*	*	*	*	57
4 months - < 5 months	*	*	*	-	*	15	*	*	*	*	46
5 months - < 6 months	*	*	13	*	*	*	*	*	*	*	52
6 months - < 1 year	11	*	42	*	22	46	*	19	15	22	195
1 year - < 2 years	18	*	60	*	29	69	15	27	23	39	293
2 years - < 3 years	16	*	62	*	21	56	*	19	20	39	256
3 years - > 3 years	32	53	205	*	67	178	32	42	73	128	821
Don't know/Unspecified	13	*	32	*	14	38	*	12	11	20	158

* For all values of 10 000 or lower the sample size is too small for reliable estimates

**Total includes exterior organisations and foreign governments; other; and unspecified

4. The unemployed

4.3 Unemployed persons who have worked before by duration of unemployment and previous industry

4.3.2 Expanded definition of unemployment

1 000

Duration of unemployment	Previous industry										
	Agriculture, hunting and forestry	Mining	Manufacturing	Electricity, gas and water	Construction	Wholesale and retail trade	Transport, storage and communication	Finance and business services	Community, social and personal services	Private households	Total**
Total	259	151	677	28	284	676	127	201	257	553	3 231
1 week - < 1 month	13	*	*	*	18	18	*	*	*	18	88
1 month - < 2 months	15	*	18	*	*	23	*	*	*	15	97
2 months - < 3 months	14	*	22	*	13	24	*	*	*	15	108
3 months - < 4 months	*	*	18	*	*	17	*	*	*	12	90
4 months - < 5 months	*	*	11	-	*	19	*	*	*	*	67
5 months - < 6 months	*	*	15	*	*	14	*	*	*	14	84
6 months - < 1 year	30	*	58	*	27	63	14	25	19	37	285
1 year - < 2 years	42	11	87	*	41	96	19	37	38	84	461
2 years - < 3 years	29	14	87	*	33	80	12	30	30	69	389
3 years - > 3 years	68	99	305	12	98	265	45	62	117	245	1 322
Don't know/Unspecified	24	*	51	*	20	54	10	15	15	35	239

* For all values of 10 000 or lower the sample size is too small for reliable estimates

**Total includes exterior organisations and foreign governments; other; and unspecified

4. The unemployed

4.4 Unemployed persons who have worked before by duration of unemployment and previous occupation

4.4.1 Official definition of unemployment

1 000

Duration of unemployment	Previous occupation										
	Legislators, senior officials and managers	Professionals	Technicians and associate professionals	Clerks	Service workers and shop and market sales workers	Skilled agricultural and fishery workers	Craft and related trades workers	Plant and machine operators and assemblers	Elementary occupations	Domestic workers	Total
Total	24	16	87	216	311	43	341	275	481	272	2 072
1 week - < 1 month	-	*	-	*	*	*	14	*	14	*	58
1 month - < 2 months	*	-	*	*	11	*	13	*	14	*	64
2 months - < 3 months	*	*	*	*	13	*	13	*	16	*	73
3 months - < 4 months	*	-	*	*	*	*	11	*	12	*	57
4 months - < 5 months	*	-	*	*	*	*	*	*	12	*	46
5 months - < 6 months	*	-	*	*	*	*	*	*	15	*	52
6 months - < 1 year	*	*	13	24	26	*	35	24	47	19	195
1 year - < 2 years	*	*	14	30	50	*	44	35	69	36	293
2 years - < 3 years	*	*	12	27	42	*	32	40	55	35	256
3 years - > 3 years	*	*	32	75	119	*	139	120	189	123	821
Don't know/Unspecified	*	*	*	18	22	*	28	19	37	19	158

* For all values of 10 000 or lower the sample size is too small for reliable estimates

- No respondents

4. The unemployed

4.4 Unemployed persons who have worked before by duration of unemployment and previous occupation

4.4.2 Expanded definition of unemployment

1 000

Duration of unemployment	Previous occupation										
	Legislators, senior officials and managers	Professionals	Technicians and associate professionals	Clerks	Service workers and shop and market sales workers	Skilled agricultural and fishery workers	Craft and related trades workers	Plant and machine operators and assemblers	Elementary occupations	Domestic workers	Total
Total	32	20	134	304	455	69	494	384	814	514	3 231
1 week - < 1 month	-	*	*	11	*	*	17	*	21	16	88
1 month - < 2 months	*	-	*	*	18	*	16	11	25	11	97
2 months - < 3 months	*	*	*	14	16	*	17	*	29	13	108
3 months - < 4 months	*	*	*	*	11	*	13	13	25	*	90
4 months - < 5 months	*	-	*	*	*	*	*	*	21	*	67
5 months - < 6 months	*	*	*	*	*	*	11	*	24	13	84
6 months - < 1 year	*	*	15	33	39	*	45	31	80	33	285
1 year - < 2 years	*	*	23	43	73	13	60	46	118	77	461
2 years - < 3 years	*	*	20	37	55	*	51	53	89	64	389
3 years - > 3 years	11	*	50	108	183	19	215	172	317	236	1 322
Don't know/Unspecified	*	*	*	25	31	*	40	25	65	32	239

* For all values of 10 000 or lower the sample size is too small for reliable estimates

- No respondents

4. The unemployed

4.5 Unemployed persons who have worked before by duration of unemployment and age

Duration of unemployment	Age group							
	15-30 years		31-46 years		47-65 years		Total	
	N (1 000)	%	N (1000)	%	N (1 000)	%	N (1 000)	%
Total	776	100.0	998	100.0	298	100.0	2 072	100.0
1 week - < 1 month	33	4.2	21	2.1	*	*	58	2.8
1 month - < 2 months	31	4.0	27	2.7	*	*	64	3.1
2 months - < 3 months	42	5.4	26	2.6	*	*	73	3.5
3 months - < 4 months	34	4.4	17	1.7	*	*	57	2.7
4 months - < 5 months	24	3.1	18	1.8	*	*	46	2.2
5 months - < 6 months	26	3.4	20	2.0	*	*	52	2.5
6 months - < 1 year	101	13.1	73	7.4	20	6.9	195	9.4
1 year - < 2 years	141	18.2	122	12.2	30	10.1	293	14.1
2 years - > 3 years	100	12.8	124	12.4	32	10.9	256	12.3
3 years or more	180	23.2	478	48.0	163	54.8	821	39.6
Don't know/Unspecified	64	8.3	71	7.1	22	7.4	158	7.6

* For all values of 10 000 or lower the sample size is too small for reliable estimates

4. The unemployed

4.6 Unemployed persons who have never worked, by duration of job seeking and age

Duration of job seeking	Age group							
	15-30 years		31-46 years		47-65 years		Total	
	N (1 000)	%	N (1 000)	%	N (1 000)	%	N (1 000)	%
Total	1 938	100.0	465	100.0	49	100.0	2 452	100.0
Less than a month	104	5.4	25	5.3	*	*	132	5.4
1 month - < 2 months	83	4.3	13	2.8	*	*	97	4.0
2 months - < 3 months	68	3.5	*	*	*	*	75	3.1
3 months - < 4 months	65	3.3	13	2.7	*	*	79	3.2
4 months - < 6 months	72	3.7	*	2.1	*	*	83	3.4
6 months - < 1 year	282	14.6	22	4.7	*	*	307	12.5
1 year - < 3 years	615	31.7	76	16.3	*	*	695	28.4
3 years- > 3 years	609	31.4	288	62.0	30	59.8	927	37.8
Not applicable	19	1.0	*	*	*	*	23	0.9
Don't know/Unspecified	21	1.1	*	*	*	*	34	1.4

* For all values of 10 000 or lower the sample size is too small for reliable estimates

4. The unemployed

4.7 By highest level of education, population group and sex

4.7.1 Official definition of unemployment

1 000

Highest level of education	African			Coloured			Indian/Asian			White			Total		
	Total	Male	Female	Total	Male	Female	Total	Male	Female	Total	Male	Female	Total	Male	Female
Total	3 929	1 848	2 081	358	178	180	109	53	56	128	60	68	4 525	2 139	2 386
None	183	81	102	*	*	*	-	-	-	-	-	-	189	83	107
Grade 0 to Grade 3/Std 1	145	88	58	*	*	*	*	-	*	-	-	-	156	92	64
Grade 4/Std 2	128	75	53	*	*	*	*	*	-	-	-	-	134	79	55
Grade 5/Std 3	163	85	79	*	*	*	*	-	*	*	-	*	175	90	85
Grade 6/Std 4	203	103	100	24	12	12	*	*	*	*	*	-	229	117	112
Grade 7/Std 5	331	169	162	37	22	15	*	*	*	*	*	*	376	195	180
Grade 8/Std 6	338	166	172	53	28	26	*	*	*	*	*	*	407	201	206
Grade 9/Std 7	315	141	174	49	23	26	*	*	*	*	*	*	377	169	208
Grade 10/Std 8	426	186	239	52	27	26	13	*	*	27	14	13	518	234	284
Grade 11/Std 9	473	213	260	28	12	16	13	*	*	*	*	*	520	234	285
Grade 12/Std 10	966	439	527	71	34	37	48	21	27	54	26	28	1 140	521	619
NTC I - NTC III	19	*	*	*	*	-	-	-	-	*	*	*	26	15	11
Dipl./cert. with Grade 11/Std 9 or lower	29	13	16	*	*	*	*	-	*	*	*	*	37	15	22
Dipl./cert. with Grade 12/Std 10	146	51	96	*	*	*	*	*	*	*	*	*	159	56	103
Degree/higher	41	17	24	*	*	-	*	*	*	*	*	*	59	24	35
Other	*	*	*	-	-	-	-	-	-	-	-	-	*	*	*
Unspecified	20	12	*	*	*	*	-	-	-	*	*	-	22	13	*

* For all values of 10 000 or lower the sample size is too small for reliable estimates

- No respondents

Totals include other and unspecified population groups

4. The unemployed

4.7 By highest level of education, population group and sex

4.7.2 Expanded definition of unemployment

1 000

Highest level of education	African			Coloured			Indian/Asian			White			Total		
	Total	Male	Female	Total	Male	Female	Total	Male	Female	Total	Male	Female	Total	Male	Female
Total	6 774	2 881	3 893	582	254	328	145	65	80	193	78	115	7 698	3 280	4 418
None	417	157	260	14	*	*	-	-	-	-	-	-	432	161	270
Grade 0 to Grade 3/Std 1	337	175	162	22	*	15	*	-	*	-	-	-	360	182	178
Grade 4/Std 2	263	132	132	12	*	*	*	*	-	*	-	*	276	137	139
Grade 5/Std 3	322	155	166	25	*	17	*	*	*	*	-	*	351	165	186
Grade 6/Std 4	420	192	228	39	19	20	*	*	*	*	*	-	463	213	250
Grade 7/Std 5	618	269	349	64	33	31	*	*	*	*	*	*	690	306	384
Grade 8/Std 6	616	260	356	87	40	46	12	*	*	14	*	*	730	311	418
Grade 9/Std 7	574	221	353	74	29	45	*	*	*	12	*	*	668	257	411
Grade 10/Std 8	680	272	407	80	38	42	16	*	*	38	17	21	814	336	478
Grade 11/Std 9	759	307	452	43	18	25	15	*	*	*	*	*	827	336	490
Grade 12/Std 10	1 414	601	813	105	45	60	65	27	38	77	31	47	1 663	704	959
NTC I - NTC III	25	12	13	*	*	*	-	-	-	*	*	*	37	23	15
Dipl./cert. with Grade 11/Std 9 or lower	39	17	22	*	*	*	*	-	*	*	*	*	47	18	29
Dipl./cert. with Grade 12/Std 10	196	66	131	*	*	*	*	*	*	11	*	*	221	75	146
Degree/higher	53	23	31	*	*	-	*	*	*	13	*	*	78	31	47
Other	*	*	*	-	-	-	-	-	-	*	*	-	*	*	*
Unspecified	36	21	15	*	*	*	-	-	-	*	*	-	39	22	17

* For all values of 10 000 or lower the sample size is too small for reliable estimates

- No respondents

Totals include other and unspecified population groups

4. The unemployed

4.8 Unemployed persons with degrees, diplomas and certificates by field of study and sex: Both definitions of unemployment

1 000

Field of study	Official definition			Expanded definition		
	Total	Male	Female	Total	Male	Female
Total	254	94	160	346	124	221
Communication studies and language	*	*	*	*	*	*
Education, training and development	67	17	50	94	23	71
Manufacturing, engineering and technology	22	16	*	31	24	*
Human and social studies	11	*	*	15	*	*
Law, military science and security	*	*	*	*	*	*
Health sciences and social services	*	*	*	12	*	*
Agriculture and nature conservation	*	*	*	*	*	*
Culture and arts	*	*	*	*	*	*
Business, commerce and management studies	67	26	41	86	30	57
Physical, mathematical, computer and life sciences	34	*	26	50	12	38
Services	*	*	*	*	*	*
Physical planning and construction	*	*	*	*	*	*
Don't know	*	*	*	*	*	*
Unspecified	12	*	*	16	*	*

* For all values of 10 000 or lower the sample size is too small for reliable estimates

4. The unemployed

4.9 Unemployed and not economically active population by reason for not working and sex

4.9.1 Official definition of unemployment

1 000

Reason for not working	Male			Female			Total		
	Total	Not economically active	Unemployed	Total	Not economically active	Unemployed	Total	Not economically active	Unemployed
Total	6 931	4 792	2 139	9 601	7 214	2 386	16 532	12 006	4 525
Has found a job, but is only starting at a definite date in the future	25	-	25	24	-	24	49		49
Lack of skills or qualifications for available jobs	1 385	600	785	2 025	1 067	958	3 410	1 667	1 743
Scholar or student, prefers not to work	2 541	2 541	-	2 345	2 345	-	4 886	4 886	-
Housewife/homemaker, prefers not to work	37	37	-	1 173	1 173	-	1 210	1 210	-
Retired and prefers not to seek formal work	126	126	-	128	128	-	253	253	-
Illness, invalid, disabled or unable to work	568	568	-	641	641	-	1 209	1 209	-
Too young or too old to work	198	198	-	602	602	-	801	801	-
Seasonal worker, e.g. fruit picker, wool-shearer	27	-	18	61	37	24	88	45	42
Cannot find suitable work (salary, location of work or conditions not satisfactory)	1 546	485	1 061	2 086	885	1 201	3 632	1 370	2 262
Contract worker, e.g. mine worker resting according to contract	26	12	14	22	*	12	49	22	26
Recently retrenched	193	68	125	109	48	61	302	116	186
Other reasons	227	117	110	340	233	106	567	350	217
Not applicable	19	19	-	24	24	-	43	43	-
Unspecified	13	13	-	20	20	-	33	33	-

* For all values of 10 000 or lower the sample size is too small for reliable estimates

- No respondents

4. The unemployed

4.9 Unemployed and not economically active population by reason for not working and sex

4.9.2 Expanded definition of unemployment

Reason for not working	1 000								
	Male			Female			Total		
	Total	Not economically active	Unemployed	Total	Not economically active	Unemployed	Total	Not economically active	Unemployed
Total	6 931	3 651	3 280	9 601	5 183	4 418	16 532	8 834	7 698
Has found a job, but is only starting at a definite date in the future	25	-	25	24	-	24	49	-	49
Lack of skills or qualifications for available jobs	1 385	72	1 313	2 025	107	1 918	3 410	179	3 231
Scholar or student, prefers not to work	2 541	2 541	-	2 345	2 345	-	4 886	4 886	-
Housewife/homemaker, prefers not to work	37	37	-	1 173	1 173	-	1 210	1 210	-
Retired and prefers not to seek formal work	126	126	-	128	128	-	253	253	-
Illness, invalid, disabled or unable to work	568	568	-	641	641	-	1 209	1 209	-
Too young or too old to work	198	198	-	602	602	-	801	801	-
Seasonal worker, e.g. fruit picker, wool-shearer	27	*	26	61	*	53	88	*	80
Cannot find suitable work (salary, location of work or conditions not satisfactory)	1 546	23	1 524	2 086	46	2 040	3 632	68	3 564
Contract worker, e.g. mine worker resting according to contract	26	*	23	22	*	21	49	*	44
Recently retrenched	193	15	178	109	11	98	302	26	276
Other reasons	227	35	192	340	76	263	567	112	455
Not applicable	19	19	-	24	24	-	43	43	-
Unspecified	13	13	-	20	20	-	33	33	-

* For all values of 10 000 or lower the sample size is too small for reliable estimates

- No respondents

5. Economic activities of the aged (66 years and above)

5.1 By type of economic activity, if any, and sex

1 000

Activity and sex	Involved	Not involved	Total
Run or do any kind of business, big or small for himself/herself			
Total	65	1 737	1 802
Male	35	669	704
Female	29	1 068	1 098
Do any work for a wage, salary, commission or any payment in kind			
Total	71	1 731	1 802
Male	49	655	704
Female	22	1 076	1 098
Do any work as a domestic worker for a wage, salary, or any payment in kind			
Total	15	1 787	1 802
Male	*	700	704
Female	11	1 086	1 098
Help unpaid in a family business of any kind			
Total	*	1 799	1 802
Male	*	703	704
Female	*	1 096	1 098
Do any work in his/her own or the family's plot, farm, food garden, cattle post or kraal or help in growing farm produce or in looking after animals for the household			
Total	50	1 752	1 802
Male	32	673	704
Female	18	1 079	1 098

5. Economic activities of the aged (66 years and above)

5.1 By type of economic activity, if any, and sex (concluded)

1 000

Activity and sex	Involved	Not involved	Total
Do any construction or major repair work on his/her own home, plot, cattle post or business or those of the family			
Total	*	1 800	1 802
Male	*	704	704
Female	*	1 097	1 098
Catch any fish, prawns, shells, wild animals or other food for sale or family food			
Total	*	1 802	1 802
Male	*	704	704
Female	-	1 098	1 098
Beg for money or food in public			
Total	*	1 802	1 802
Male	-	704	704
Female	*	1 098	1 098
Involved in at least one activity except begging			
Total	201	1 601	1 802
Male	119	585	704
Female	82	1 016	1 098

* For all values of 10 000 or lower the sample size is too small for reliable estimates

- No respondents

Totals include unspecified gender

5. Economic activities of the aged (66 years and above)

5.2 By type of economic activity, if any, and population group

1 000

Activity and population group	Involved	Not involved	Total
Run or do any kind of business, big or small for himself/herself			
Total	65	1 737	1 802
African	43	1 214	1 256
Coloured	*	130	131
Indian/Asian	*	40	42
White	19	341	360
Do any work for a wage, salary, commission or any payment in kind			
Total	71	1 731	1 802
African	46	1 211	1 256
Coloured	*	127	131
Indian/Asian	*	40	42
White	19	342	360
Do any work as a domestic worker for a wage, salary, or any payment in kind			
Total	15	1 787	1 802
African	13	1 243	1 256
Coloured	*	128	131
Indian/Asian	-	42	42
White	-	360	360
Help unpaid in a family business of any kind			
Total	*	1 799	1 802
African	*	1 255	1 256
Coloured	-	131	131
Indian/Asian	-	42	42
White	*	359	360
Do any work in his/her own or the family's plot, farm, food garden, cattle post or kraal or help in growing farm produce or in looking after animals for the household			
Total	50	1 752	1 802
African	49	1 208	1 256
Coloured	*	130	131
Indian/Asian	-	42	42
White	*	360	360

5. Economic activities of the aged (66 years and above)

5.2 By type of economic activity, if any, and population group (concluded)

1 000

Activity and population group	Involved	Not involved	Total
Do any construction or major repair work on his/her own home, plot, cattle post or business or those of the family			
Total	*	1 800	1 802
African	*	1 255	1 256
Coloured	-	131	131
Indian/Asian	-	42	42
White	*	360	360
Catch any fish, prawns, shells, wild animals or other food for sale or family food			
Total	*	1 802	1 802
African	*	1 256	1 256
Coloured	-	131	131
Indian/Asian	-	42	42
White	-	360	360
Beg for money or food in public			
Total	*	1 802	1 802
African	*	1 256	1 256
Coloured	-	131	131
Indian/Asian	-	42	42
White	-	360	360
Involved in at least one activity except begging			
Total	201	1 601	1 802
African	149	1 107	1 256
Coloured	*	124	131
Indian/Asian	*	38	42
White	39	321	360

* For all values of 10 000 or lower the sample size is too small for reliable estimates

- No respondents

Totals include other and unspecified population groups

5. Economic activities of the aged (66 years and older)

5.3 Working aged by population group, sex and sector

1 000

Population group and sex	Formal	Informal	Domestic	Unspecified	Total
All population groups					
Total	78	108	12	*	201
Male	60	59	*	*	120
Female	18	50	12	*	81
African					
Total	42	96	*	*	150
Male	35	53	*	*	89
Female	*	43	*	*	60
Coloured					
Total	*	*	*	-	*
Male	*	*	-	-	*
Female	*	*	*	-	*
Indian/Asian					
Total	*	*	-	-	*
Male	*	*	-	-	*
Female	*	-	-	-	*
White					
Total	28	*	-	*	39
Male	20	*	-	-	24
Female	*	*	-	*	16

* For all values of 10 000 or lower the sample size is too small for reliable estimates

- No respondents

5. Economic activities of the aged (66 years and older)

5.4 Working age by main industry and sex

1 000

Main industry	Male	Female	Total
Total	120	81	201
Agriculture, hunting, forestry and fishing	46	21	67
Mining and quarrying	*	-	*
Manufacturing	*	*	17
Construction	*	*	*
Wholesale and retail trade	15	21	36
Transport, storage and communication	*	-	*
Financial intermediation, insurance, real estate and business services	13	*	21
Community, social and personal services	15	*	25
Private households with employed persons	*	12	16
Unspecified	-	*	*

* For all values of 10 000 or lower the sample size is too small for reliable estimates

- No respondents

5. Economic activities of the aged (66 years and older)

5.5 Working aged by main occupation and sex

1 000

Main occupation	Male	Female	Total
Total	120	81	201
Legislators, senior officials and managers	12	*	14
Professionals	*	*	11
Technical and associate professionals	*	*	17
Clerks	*	*	*
Service workers and shop and market sales workers	*	*	20
Skilled agricultural and fishery workers	40	20	60
Craft and related trades workers	11	*	15
Plant and machine operators and assemblers	*	*	*
Elementary occupation	20	14	34
Domestic workers	*	12	12
Occupation not adequately defined	-	-	-
Unspecified	-	*	*

* For all values of 10 000 the sample size is too small for reliable estimates

- No respondents