



**Statistics
South Africa**

Preferred supplier of quality statistics



Statistical release

P0211

Quarterly Labour Force Survey

Quarter 2, 2010

Embargoed until:

**27 July 2010
11:30**

Enquiries:

User Information Services
Tel: (012) 310 8600 / 4892 / 8390

Forthcoming issue:

Quarter 3, 2010

Expected release date

October 2010

Statistics South Africa • Mbalo-mbalo ya Afrika Tshipembe • Tinhlayo-tiko ta Afrika-Dzonga • Dipalopalo tsa Aforika Borwa • Ezezibalo zaseNingizimu Afrika
Dipalopalo tša Afrika Borwa • Dipalopalo tsa Afrika Borwa • Ubalo lwaseMzantsi Afrika • Telubalo eNingizimu Afrika • iNanimbalo leSewula Afrika • Statistiek Suid-Afrika

Published by Statistics South Africa, Private Bag X44, Pretoria 0001

© Statistics South Africa, 2010

Users may apply or process this data, provided Statistics South Africa (Stats SA) is acknowledged as the original source of the data; that it is specified that the application and/or analysis is the result of the user's independent processing of the data; and that neither the basic data nor any reprocessed version or application thereof may be sold or offered for sale in any form whatsoever without prior permission from Stats SA.

Stats SA Library Cataloguing-in-Publication (CIP) Data

Quarterly Labour Force Survey Quarter 2, 2010/Statistics South Africa. Pretoria: Statistics South Africa, 2010

Quarterly

1. Labour supply – Statistics
 2. Labour supply (South Africa)
 3. Unemployment (South Africa)
 4. Informal sector (Economics) – South Africa
 5. Formal sector (Economics) – South Africa
 - I. Statistics South Africa
 - II. Series
- (LCSH 16)

A complete set of Stats SA publications is available at Stats SA Library and the following libraries:

National Library of South Africa, Pretoria Division
National Library of South Africa, Cape Town Division
Library of Parliament, Cape Town
Bloemfontein Public Library
Natal Society Library, Pietermaritzburg
Johannesburg Public Library
Eastern Cape Library Services, King William's Town
Central Regional Library, Polokwane
Central Reference Library, Nelspruit
Central Reference Collection, Kimberley
Central Reference Library, Mmabatho

This publication is available both in hard copy and on the Stats SA website www.statssa.gov.za.

The data and metadata set from the Quarterly Labour Force Survey will be available on CD-ROM. A charge may be made according to the pricing policy, which can be accessed on the website.

Stats SA also provides a subscription service.

Enquiries:

	Printing and Distribution	User Information Services
Tel:	(012) 310 8251	(012) 310 8600
Fax:	(012) 321 7381	(012) 310 8500/ 8495
Email:	distribution@statssa.gov.za	info@statssa.gov.za

Table of contents

	Page
List of tables in highlights of the results	iii
List of figures in highlights of the results	iii
List of tables	iv
1. Introduction	vi
2. Highlights of the results	vi
3. Employment	vii
4. The unemployed population	xi
5. Characteristics of the not economically active population	xiii
6. Technical notes	xiv
6.1. Response details	xiv
6.2. Survey requirements and design	xv
6.3. Sample rotation	xv
6.4. Weighting	xv
6.5. Non-response adjustment	xv
6.6. Final survey weights	xvi
6.7. Estimation	xvi
6.8. Reliability of the survey estimates	xvi
7. Definitions	xvii

List of tables in highlights of the results

	Page
Table A: Key labour market indicators	vi
Table B: Employment by industry	viii
Table C: Employment by province	viii
Table D: Employment by occupation	x
Table E: Unemployed by sex	xi
Table F: Characteristics of the unemployed	xii
Table G: The not economically active	xiii
Table H: Response rates by province	xiv

List of figures in highlights of the results

Figure 1: Total employment, quarter 1: 2008 to quarter 2: 2010	vii
Figure 2: Quarter to quarter percentage change in employment, Quarter 1: 2008 to Quarter 2: 2010	vii
Figure 3: Formal sector employment by industry	ix
Figure 4: Informal sector employment by industry	x
Figure 5: Unemployment rate by province	xi
Figure 6: Unemployment rate by population group	xii

List of tables

	Page
Table 1: Population of working age (15-64 years)	1
Table 2: Labour force characteristics by sex - All population groups	2
Table 2: Labour force characteristics by sex - All population groups	3
Table 2.1: Labour force characteristics by population group	4
Table 2.1: Labour force characteristics by population group (Concluded)	5
Table 2.2: Labour force characteristics by province	6
Table 2.2: Labour force characteristics by province (Continued)	7
Table 2.2: Labour force characteristics by province (Continued)	8
Table 2.2: Labour force characteristics by province (Continued)	9
Table 2.2: Labour force characteristics by province (Concluded).....	10
Table 3.1: Employed by industry and sex - South Africa	11
Table 3.2: Employed by industry and province	12
Table 3.2: Employed by industry and province (Continued)	13
Table 3.2: Employed by industry and province (Continued)	14
Table 3.2: Employed by industry and province (Concluded)	15
Table 3.3: Employed by sector and industry - South Africa	16
Table 3.4: Employed by province and sector.....	17
Table 3.4: Employed by province and sector (Concluded)	18
Table 3.5: Employed by sex and occupation - South Africa	19
Table 3.6: Employed by sex and status in employment - South Africa.....	20
Table 3.7: Employed by sex and usual hours of work - South Africa	21
Table 3.8: Time-related underemployment - South Africa	22
Table 4: Characteristics of the unemployed - South Africa.....	23
Table 4: Characteristics of the unemployed - South Africa (Concluded)	24
Table 5: Characteristics of the not economically active - South Africa	25
Table 6: Socio-demographic characteristics - South Africa	26
Table 6: Socio-demographic characteristics - South Africa (Continued)	27
Table 6: Socio-demographic characteristics - South Africa (Concluded)	28
Table 7: Involvement in non-market activities and labour market status by province.....	29
Table 7: Involvement in non-market activities and labour market status by province (Continued).....	30
Table 7: Involvement in non-market activities and labour market status by province (Continued).....	31

Appendix 2A: Sampling variability for labour force characteristics by sex.....	32
Appendix 2A: Sampling variability for labour force characteristics by sex (Concluded).....	33
Appendix 2.1A: Sampling variability for labour force characteristics by population group.....	34
Appendix 2.1A: Sampling variability for labour force characteristics by population group (Concluded)	35
Appendix 2.2A: Sampling variability for labour force characteristics by province	36
Appendix 2.2A: Sampling variability for labour force characteristics by province	37
Appendix 2.2A: Sampling variability for labour force characteristics by province	38
Appendix 2.2A: Sampling variability for labour force characteristics by province	39
Appendix 2.2A: Sampling variability for labour force characteristics by province (Concluded)	40
Appendix 3.1A: Sampling variability for the employed by industry and sex.....	41
Appendix 3.4A: Sampling variability for the employed by province and sector	42
Appendix 3.4A: Sampling variability for the employed by province and sector (Concluded).....	43
Appendix 3.5A: Sampling variability for the employed by sex and occupation	44
Appendix 2B: Sampling variability for labour force characteristics by sex.....	45
Appendix 2B: Sampling variability for labour force characteristics by sex (Concluded).....	46
Appendix 2.1B: Sampling variability for labour force characteristics by population group.....	47
Appendix 2.1B: Sampling variability for labour force characteristics by population group (Concluded)	48
Appendix 2.2B: Sampling variability for labour force characteristics by province	49
Appendix 2.2B: Sampling variability for labour force characteristics by province	50
Appendix 2.2B: Sampling variability for labour force characteristics by province	51
Appendix 2.2B: Sampling variability for labour force characteristics by province	52
Appendix 2.2B: Sampling variability for labour force characteristics by province (Concluded)	53
Appendix 3.1B: Sampling variability for the employed by industry and sex.....	54
Appendix 3.4B: Sampling variability for the employed by province and sector	55
Appendix 3.4B: Sampling variability for the employed by province and sector (Concluded).....	56
Appendix 3.5B: Sampling variability for the employed by sex and occupation.....	57

1. Introduction

The Quarterly Labour Force Survey (QLFS) is a household-based sample survey conducted by Statistics South Africa (Stats SA). It collects data on the labour market activities of individuals aged 15 years and above who live in South Africa. However, this report only covers labour market activities of persons aged 15 to 64 years.

This report presents the key findings of the QLFS conducted in April–June, 2010 (Q2:2010).

2. Highlights of the results

Table A: Key labour market indicators

	Apr–Jun 2009	Jan–Mar 2010	Apr–Jun 2010	Qtr-to- qtr change	Year-on- year change	Qtr-to- qtr change	Year-on- year change
	Thousand					Per cent	
Population 15–64 yrs	31 080	31 350	31 399	49	319	0,2	1,0
Labour force	17 495	17 113	17 054	-59	-441	-0,3	-2,5
Employed	13 369	12 803	12 742	-61	-627	-0,5	-4,7
Formal sector (non-agricultural)	9 356	8 974	8 845	-129	-511	-1,4	-5,5
Informal sector (non-agricultural)	2 109	2 009	2 124	115	15	5,7	0,7
Agriculture	710	650	618	-32	-92	-4,9	-13,0
Private households	1 194	1 169	1 155	-14	-39	-1,2	-3,3
Unemployed	4 125	4 310	4 312	2	187	0,0	4,5
Not economically active	13 585	14 237	14 346	109	761	0,8	5,6
Discouraged work-seekers	1 517	1 839	1 907	68	390	3,7	25,7
Other (not economically active)	12 068	12 399	12 438	39	370	0,3	3,1
Rates (%)							
Unemployment rate	23,6	25,2	25,3	0,1	1,7		
Employed / population ratio (absorption)	43,0	40,8	40,6	-0,2	-2,4		
Labour force participation rate	56,3	54,6	54,3	-0,3	-2,0		

Due to rounding, numbers do not necessarily add up to totals.

The number of persons in the labour force decreased by 59 000 between Q1:2010 and Q2:2010. Table A shows that employment also decreased by 61 000 between Q1:2010 and Q2:2010 with the formal sector losing 129 000 jobs, the informal sector gaining 115 000; while Agriculture and Private Households lost some 32 000 and 14 000 jobs respectively.

The number of unemployed persons remained virtually unchanged between Q1:2010 and Q2:2010, while the number of discouraged work-seekers increased by 68 000, resulting in the unemployment rate also remaining unchanged between Q1:2010 (25,2%) and Q2:2010 (25,3%).

Compared to Q2:2009, there was an annual decrease of 4,7% (627 000) in employment, an increase of 4,5% (187 000) in the number of unemployed persons, and an increase of 5,6% (761 000) in the number of persons who are not economically active – 390 000 being discouraged work-seekers.

3. Employment

Figure 1: Total employment, quarter 1: 2008 to quarter 2: 2010

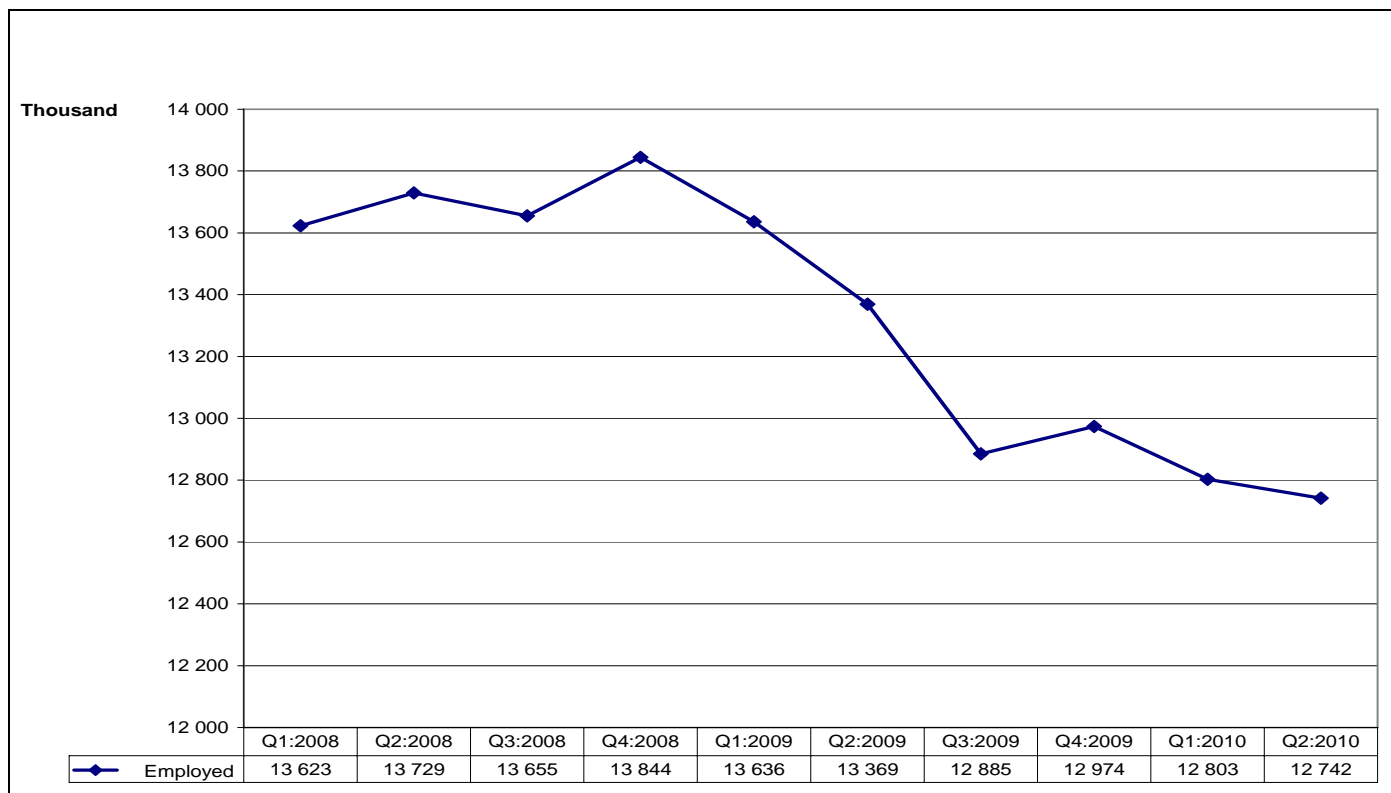


Figure 1 shows that the number of employed persons increased between the third and fourth quarters of 2008 and 2009. Employment peaked at 13,8 million in Q4:2008, after which it declined to 12,9 million in Q3:2009. After three quarters of successive decline in employment, there was a slight increase in the fourth quarter of 2009. However, in the first two quarters of 2010, employment once again declined, but not at the rate observed in the first three quarters of 2009 (see Figure 2 below).

Figure 2: Quarter-to-quarter percentage change in employment, quarter 1: 2008 to quarter 2: 2010

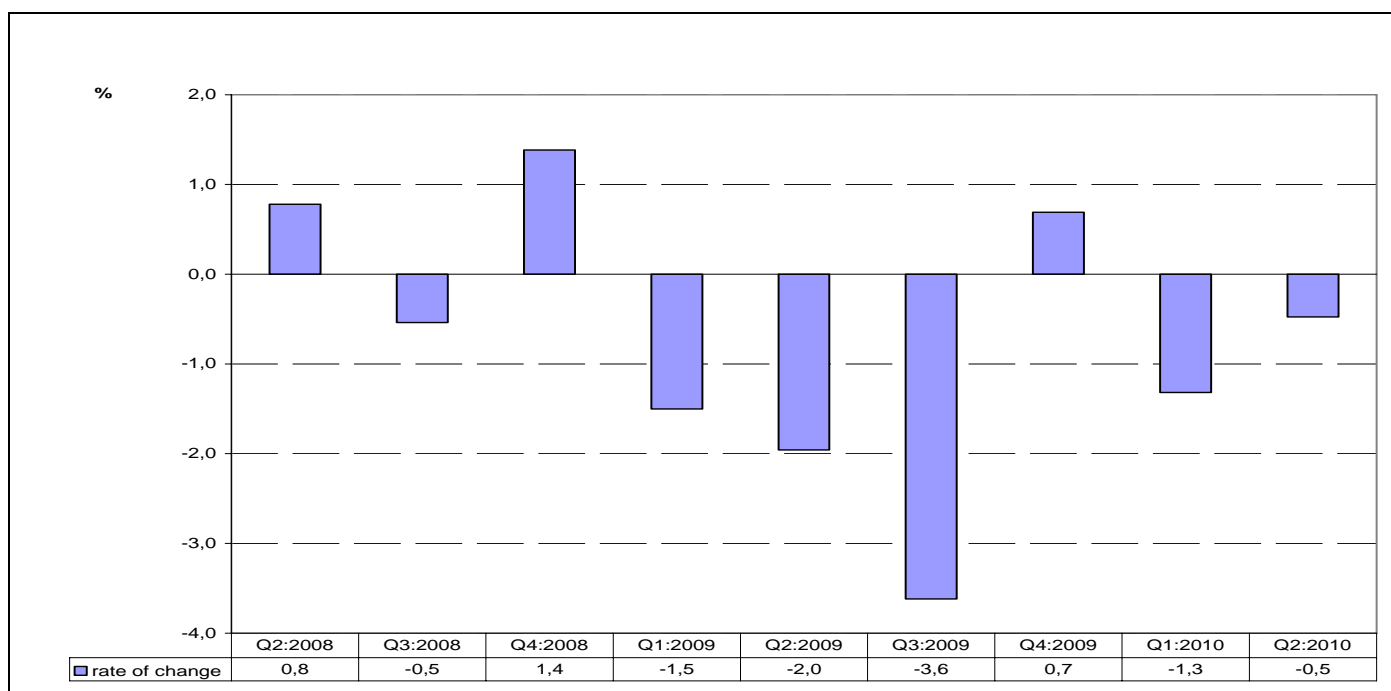


Table B: Employment by industry

	Apr–Jun 2009	Jan–Mar 2010	Apr–Jun 2010	Qtr-to-qtr change	Year-on- year change	Qtr-to- qtr change	Year-on- year change
	Thousand					Per cent	
Total	13 369	12 803	12 742	-61	-627	-0,5	-4,7
Agriculture	710	650	618	-32	-92	-4,9	-13,0
Mining	319	296	305	9	-14	3,0	-4,4
Manufacturing	1 873	1 709	1 656	-53	-217	-3,1	-11,6
Utilities	93	70	93	23	0	32,9	0,0
Construction	1 117	1 021	1 006	-15	-111	-1,5	-9,9
Trade	2 962	2 825	2 839	14	-123	0,5	-4,2
Transport	727	767	734	-33	7	-4,3	1,0
Finance	1 710	1 633	1 670	37	-40	2,3	-2,3
Community and social services	2 664	2 657	2 659	2	-5	0,1	-0,2
Private households	1 194	1 169	1 155	-14	-39	-1,2	-3,3

*Due to rounding, numbers do not necessarily add up to totals.

Table B indicates that between Q1:2010 and Q2:2010, some industries lost jobs while others created jobs, resulting in a net loss of 61 000 jobs across all industries. Most of the job losses were in Manufacturing, which accounted for 53 000 jobs, followed by Transport (33 000) and Agriculture (32 000). Job gains were observed in Finance (37 000), Utilities (23 000) and Trade (14 000).

The year-on-year comparisons show that job losses were experienced in most industries except Transport, where 7 000 jobs were created. Manufacturing accounted for 217 000 of the job losses experienced between Q2:2009 and Q2:2010, followed by Trade (123 000) and Construction (111 000).

Table C: Employment by province

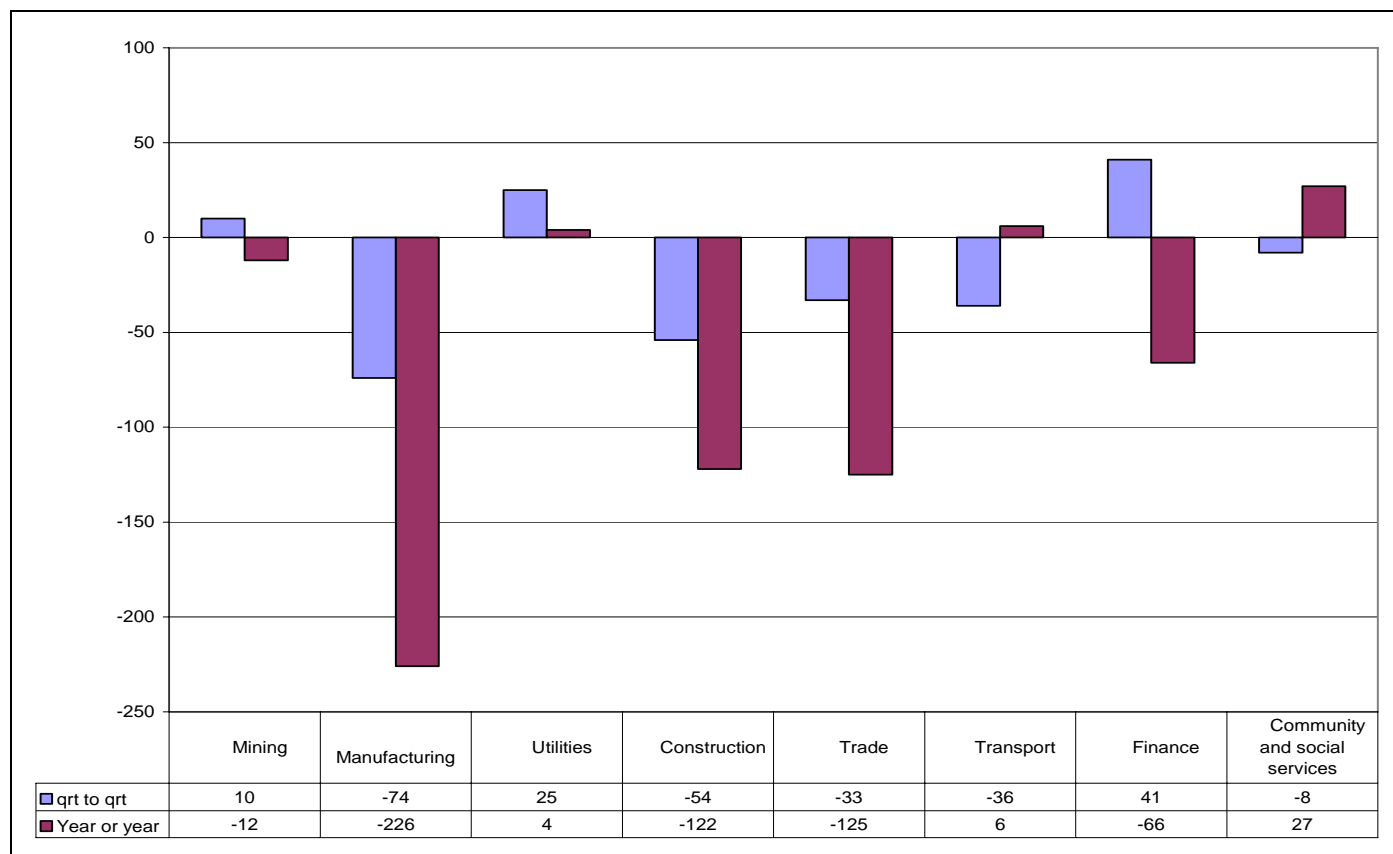
	Apr–Jun 2009	Jan–Mar 2010	Apr–Jun 2010	Qtr-to-qtr change	Year-on- year change	Qtr-to-qtr change	Year-on- year change
	Thousand					Per cent	
Total	13 369	12 803	12 742	-61	-627	-0,5	-4,7
Western Cape	1 898	1 915	1 869	-46	-29	-2,4	-1,5
Eastern Cape	1 353	1 243	1 243	0	-110	0,0	-8,1
Northern Cape	283	268	258	-10	-25	-3,7	-8,8
Free State	773	768	776	8	3	1,0	0,4
KwaZulu-Natal	2 457	2 418	2 362	-56	-95	-2,3	-3,9
North West	849	777	775	-2	-74	-0,3	-8,7
Gauteng	3 953	3 703	3 690	-13	-263	-0,4	-6,7
Mpumalanga	897	852	867	15	-30	1,8	-3,3
Limpopo	906	859	903	44	-3	5,1	-0,3

*Due to rounding, numbers do not necessarily add up to totals.

Table C shows that between Q1:2010 and Q2:2010, job losses were experienced in most provinces except Limpopo, Mpumalanga and Free State, which gained 44 000, 15 000 and 8 000 jobs respectively, and Eastern Cape remained unchanged. KwaZulu-Natal accounted for 56 000 of the job losses, followed by Western Cape with 46 000 job losses and Gauteng with 13 000.

The year-on-year comparisons (Q1:2010 and Q2:2010) show that Gauteng, Eastern Cape and KwaZulu-Natal were the hardest hit provinces in terms of job losses, with Gauteng recording 263 000 job losses, Eastern Cape recording 110 000 job losses and KwaZulu-Natal accounting for 95 000 of the 627 000 job losses.

Figure 3: Changes in formal sector employment by industry

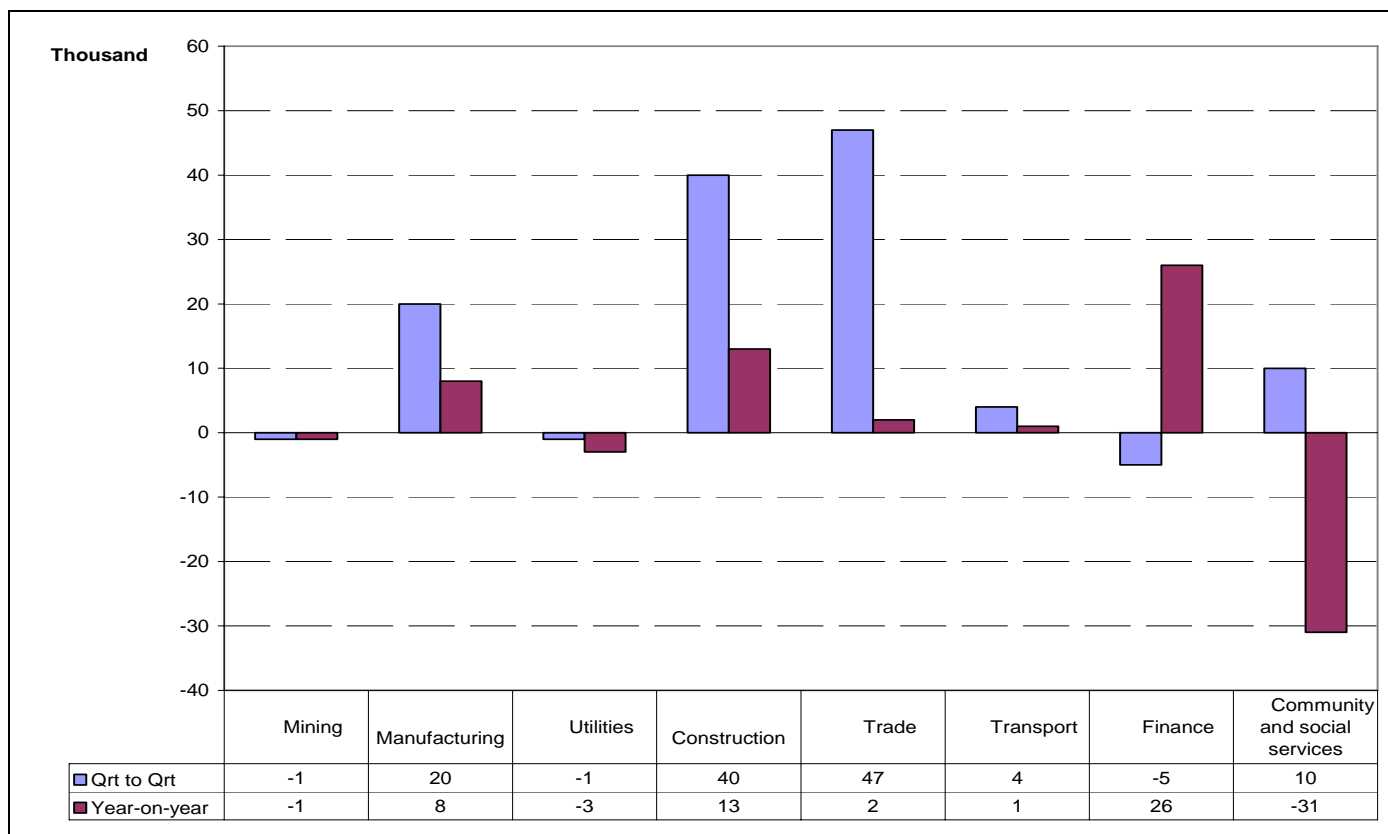


[#]QLFS mining figures are not robust and therefore the QES figures should be used.

Figure 3 shows that the formal sector lost 129 000 jobs between Q1:2010 and Q2:2010 with most of the jobs being in Manufacturing (74 000), Construction (54 000) and Transport (36 000). The Finance, Utilities and Mining industries gained 76 000 formal sector jobs in the same period.

The year-on-year comparisons show a net loss of 511 000 jobs in the formal sector, with Manufacturing, Trade and Construction being the hardest hit with the loss of 226 000, 125 000 and 122 000 jobs respectively.

Figure 4: Changes in informal sector employment by industry



*QLFS mining figures are not robust and therefore the QES figures should be used.

Figure 4 indicates that almost all industries had gained informal sector jobs except Finance, Mining and Utilities, where there was virtually no change between Q1:2010 and Q2:2010. The informal sector gained 115 000 jobs across all industries over a quarter, of which 47 000 were in Trade, 40 000 in Construction and 20 000 in Manufacturing.

Compared to Q2:2009, the informal sector gained 15 000 jobs in Q2:2010 with most of them being in Finance (26 000), Construction (13 000) and Manufacturing (8 000).

Table D: Employment by occupation

	Apr–Jun 2009	Jan–Mar 2010	Apr–Jun 2010	Qtr-to-qtr change	Year-on-year change	Qtr-to-qtr change	Year-on-year change
	Thousand			Per cent			
Total	13 369	12 803	12 742	-61	-627	-0,5	-4,7
Manager	1 022	977	978	1	-44	0,1	-4,3
Professional	654	679	735	56	81	8,2	12,4
Technician	1 550	1 488	1 408	-80	-142	-5,4	-9,2
Clerk	1 440	1 443	1 430	-13	-10	-0,9	-0,7
Sales and services	1 804	1 808	1 833	25	29	1,4	1,6
Skilled agriculture	83	88	112	24	29	27,3	34,9
Craft and related trade	1 779	1 576	1 535	-41	-244	-2,6	-13,7
Plant and machine operator	1 186	1 048	1 040	-8	-146	-0,8	-12,3
Elementary	2 889	2 806	2 769	-37	-120	-1,3	-4,2
Domestic worker	963	888	903	15	-60	1,7	-6,2

*Due to rounding, numbers do not necessarily add up to totals.

Table D shows that individuals in some of the occupations lost jobs. Most of the job losses were in the Technician (80 000), Craft and related trade (41 000) and Elementary (37 000) occupations.

The year-on-year comparisons show that almost all occupations experienced job losses resulting in a net loss of 627 000 jobs. Most of the job losses were in the Craft and related trade (244 000), Plant and machine operator (146 000), Technician (142 000), and Elementary occupations (120 000). Some job gains were observed in the Professional (81 000), Skilled agriculture (29 000) and Sales and services (29 000) occupations.

4. The unemployed population

Table E: Unemployed by sex

Unemployed	Apr–Jun 2009	Jan–Mar 2010	Apr–Jun 2010	Qtr-to-qtr change	Year-on- year change	Qtr-to-qtr change	Year-on- year change
	Thousand					Per cent	
Total	4 125	4 310	4 312	2	187	0,0	4,5
Women	2 065	2 146	2 152	6	87	0,3	4,2
Men	2 060	2 164	2 160	-4	100	-0,2	4,9

*Due to rounding, numbers do not necessarily add up to totals.

Table E shows that between Q1:2010 and Q2:2010, the number of unemployed persons remained virtually unchanged, even when disaggregated by sex, with the number increasing by merely 6 000 among women and decreasing by only 4 000 among men. This resulted in a net increase of 2 000 unemployed persons in Q2:2010.

The year-on-year comparisons show that the number of unemployed persons increased by 187 000, with an annual increase of 4,9% among men and 4,2% among men.

Figure 5: Unemployment rate by province

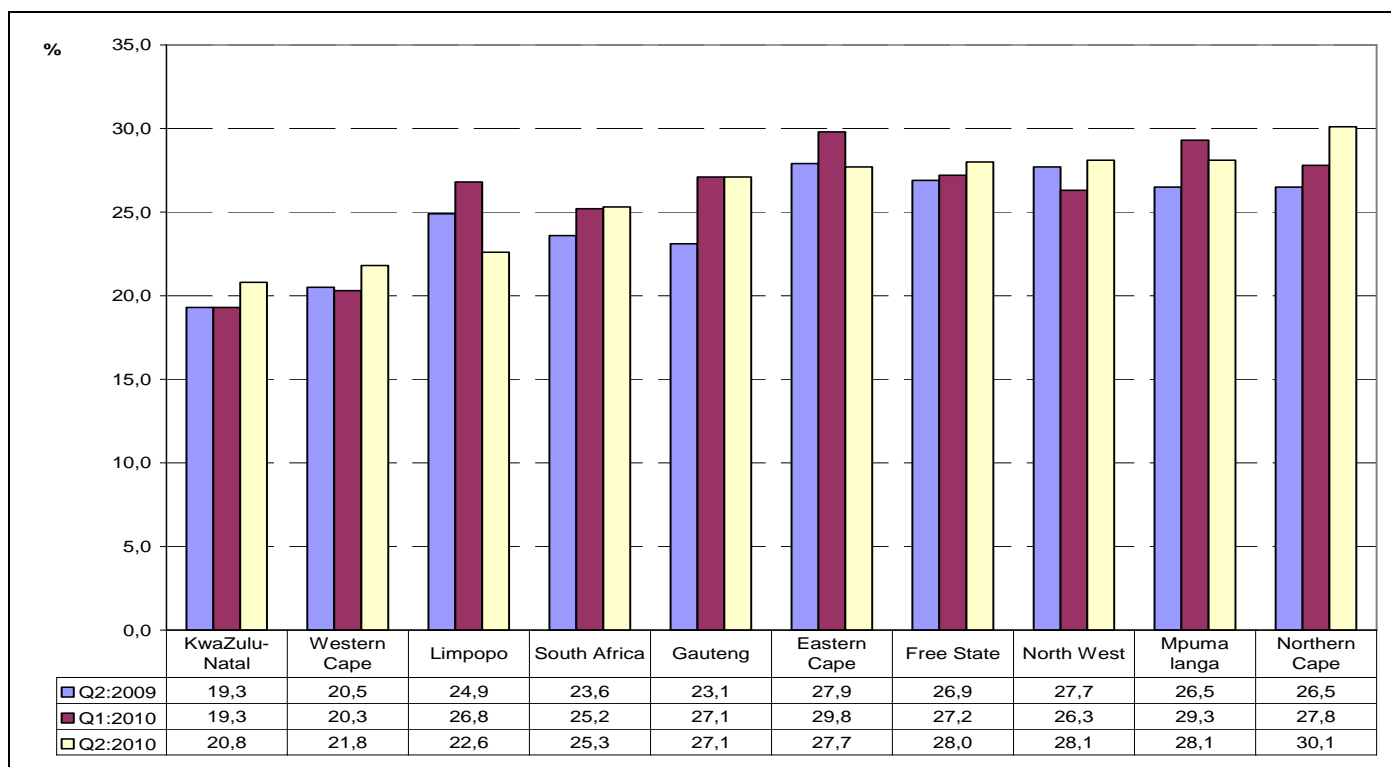


Figure 5 shows an increase in the unemployment rate in most of the provinces in Q2:2010 compared to the unemployment rate of Q1:2010. The biggest increase in the unemployment rate was observed in Northern Cape (2,3 percentage points), North West (1,8 percentage points), and KwaZulu-Natal and Western Cape (1,5 percentage points each). There was a decline in the unemployment rate in Limpopo, Eastern Cape and Mpumalanga (down by 4,2 percentage points, 2,1 percentage points and 1,2 of a percentage point respectively) between the two quarters, while it remained unchanged in Gauteng. KwaZulu-Natal had the lowest unemployment rate (20,8%) recorded for Q2:2010, as was the case in the previous quarter (19,3%).

The comparisons between Q2:2009 and Q2:2010 indicate that there was a substantial increase in the unemployment rate in Gauteng (4,0 percentage points) and Northern Cape (3,6 percentage points). The only provinces that experienced declines in the unemployment rate in the same period were Limpopo (2,3 percentage points) and Eastern Cape (0,2 of a percentage point).

Figure 6: Unemployment rate by population group

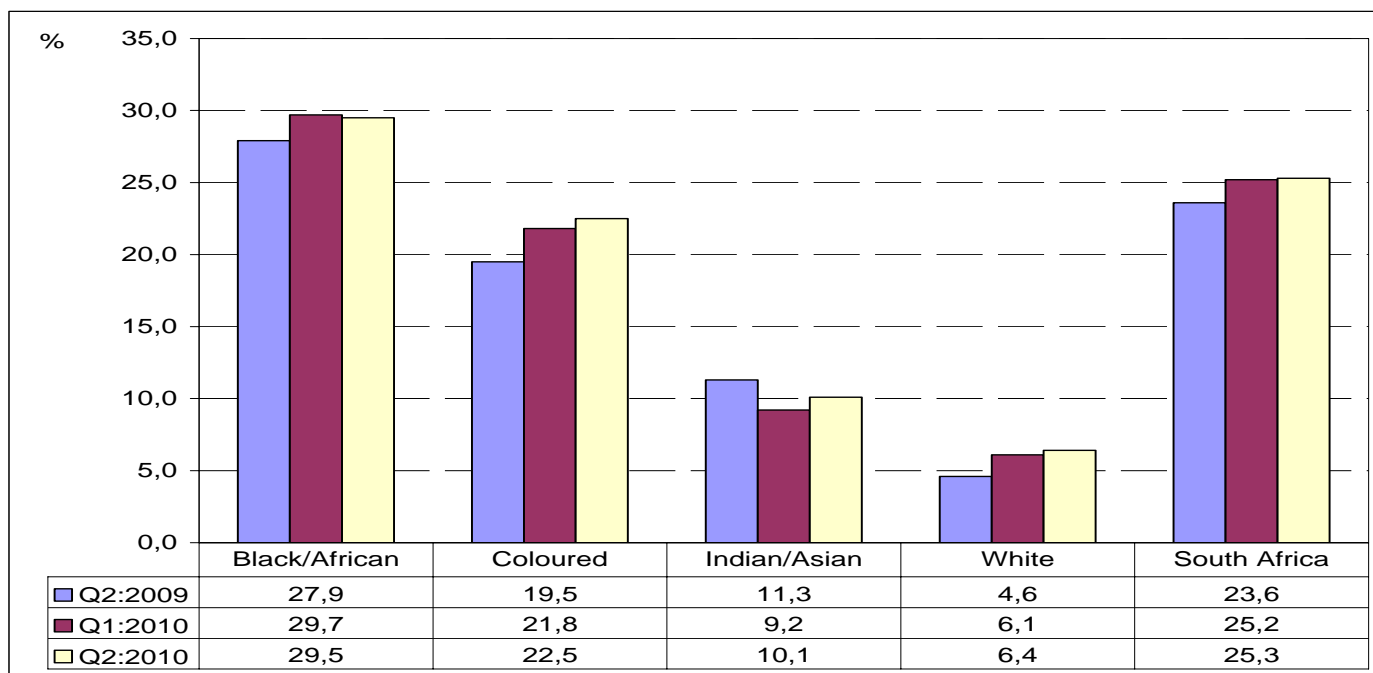


Figure 6 shows that between Q1:2010 and Q2:2010, the unemployment rate increased among the Indian/Asian, coloured, and white populations (up by 0,9, 0,7 and 0,3 percentage points respectively), but decreased by 0,1 of a percentage point among the black African population.

The year-on-year comparisons show that the unemployment rate increased substantially among all population groups except the Indian/Asian population where it decreased by 1,2 percentage points.

Table F: Characteristics of the unemployed

	Apr–Jun 2009	Jan–Mar 2010	Apr–Jun 2010	Qtr-to-qtr change	Year-on- year change	Qtr-to-qtr change	Year-on- year change
Unemployed	Thousand				Per cent		
Total	4 125	4 310	4 312	2	187	0,0	4,5
Job losers	1 427	1 410	1 443	33	16	2,3	1,1
Job leavers	345	284	285	1	-60	0,4	-17,4
New entrants	1 670	1 785	1 787	2	117	0,1	7,0
Re-entrants	173	209	201	-8	28	-3,8	16,2
Other	510	622	595	-27	85	-4,3	16,7

Table F shows that between Q1:2010 and Q2:2010 there was an increase in the number of job losers (33 000) while the number of re-entrants decreased by 8 000.

Compared to a year ago, the number of job leavers decreased by 60 000 while the number of new entrants, re-entrants and job losers into unemployment increased by 117 000, 28 000 and 16 000 respectively in Q2:2010.

5. Characteristics of the not economically active population

Table G: The not economically active

Not economically active	Apr–Jun 2009	Jan–Mar 2010	Apr–Jun 2010	Qtr-to-qtr change	Year-on-year change	Qtr-to-qtr change	Year-on-year change
	Thousand					Per cent	
Total	13 585	14 237	14 346	109	761	0,8	5,6
Student	5 693	5 841	5 964	123	271	2,1	4,8
Homemaker	2 652	2 753	2 849	96	197	3,5	7,4
Illness/disability	1 799	1 819	1 794	-25	-5	-1,4	-0,3
Too old/young to work	1 062	1 167	1 123	-44	61	-3,8	5,7
Discouraged	1 517	1 839	1 907	68	390	3,7	25,7
Other	862	820	708	-112	-154	-13,7	-17,9

Due to rounding, numbers do not necessarily add up to totals.

Table G shows that between Q1:2010 and Q2:2010, the number of students, homemakers and discouraged work-seekers who were not economically active increased by 123 000, 96 000 and 68 000 respectively, while the number of persons who were too old or too young to work decreased by 44 000 persons, and persons who were not economically active due to illnesses or disabilities decreased by 25 000.

The year-on-year changes indicate that there was an overall increase in the number of not economically active persons (761 000 or 5,6%) between Q2:2009 and Q2:2010. Discouraged work-seekers increased by 390 000 or 25,1%, while students and homemakers increased by 271 000 and 197 000 respectively.



PJ Lehohla
Statistician-General: Statistics South Africa

6. Technical notes

6.1. Response details

Table H: Response rates by province

Province	Apr–Jun 2010
	Per cent
Western Cape	80,6
Eastern Cape	95,6
Northern Cape	91,4
Free State	95,3
KwaZulu-Natal	94,3
North West	94,9
Gauteng	78,9
Mpumalanga	94,5
Limpopo	96,3
South Africa	90,3

6.2. Survey requirements and design

The Quarterly Labour Force Survey (QLFS) frame has been developed as a general-purpose household survey frame that can be used by all other household surveys irrespective of the sample size requirement of the survey. The sample size for the QLFS is roughly 30 000 dwellings per quarter.

The sample is based on information collected during the 2001 Population Census conducted by Stats SA. In preparation for the 2001 Census, the country was divided into 80 787 enumeration areas (EAs). Stats SA's household-based surveys use a master sample of primary sampling units (PSUs) which comprises EAs that are drawn from across the country.

The sample is designed to be representative at provincial level and within provinces at metro/non-metro level. Within the metros, the sample is further distributed by geography type. The four geography types are: urban formal, urban informal, farms and tribal. This implies, for example, that within a metropolitan area the sample is representative at the different geography types that may exist within that metro.

The current sample size is 3 080 PSUs. It is divided equally into four subgroups or panels called rotation groups. The rotation groups are designed in such a way that each of these groups has the same distribution pattern as that which is observed in the whole sample. They are numbered from one to four and these numbers also correspond to the quarters of the year in which the sample will be rotated for the particular group.

The sample for the redesigned Labour Force Survey (i.e. the QLFS) is based on a stratified two-stage design with probability proportional to size (PPS) sampling of PSUs in the first stage, and sampling of dwelling units (DUs) with systematic sampling in the second stage.

6.3. Sample rotation

Each quarter, a $\frac{1}{4}$ of the sampled dwellings rotate out of the sample and are replaced by new dwellings from the same PSU or the next PSU on the list. Thus, sampled dwellings will remain in the sample for four consecutive quarters. It should be noted that the sampling unit is the dwelling, and the unit of observation is the household. Therefore, if a household moves out of a dwelling after being in the sample for, say two quarters, and a new household moves in, the new household will be enumerated for the next two quarters. If no household moves into the sampled dwelling, the dwelling will be classified as vacant (unoccupied).

6.4. Weighting

The sampling weights for the data collected from the sampled households are constructed in such a manner that the responses could be properly expanded to represent the entire civilian population of South Africa. The weights are the result of calculations involving several factors, including original selection probabilities, adjustment for non-response, and benchmarking to known population estimates from the Demographic division of Stats SA.

6.5. Non-response adjustment

In general, imputation is used for item non-response (i.e. blanks within the questionnaire) and edit failure (i.e. invalid or inconsistent responses). The eligible households in the sampled dwellings can be divided into two response categories: respondents and non-respondents; and weight adjustment is applied to account for the non-respondent households (e.g. refusal, no contact, etc.).

6.6. Final survey weights

The final survey weights are constructed using regression estimation to calibrate to the known population counts at the national level population estimates (which are supplied by the Demography division) cross-classified by 5-year age groups, gender and race, and provincial population estimates by broad age groups. The 5-year age groups are: 0–4, 5–9, 10–14, etc., and 65 and over. The provincial-level age groups are: 0–14, 15–34, 35–64, and 65 years and over. The calibrated weights are constructed such that all persons in a household would have the same final weight.

6.7. Estimation

The final survey weights are used to obtain the estimates for various domains of interest, e.g. number of persons employed in agriculture in the province of Western Cape, number of females employed in manufacturing, etc.

6.8. Reliability of the survey estimates

Because estimates are based on sample data, they differ from figures that would have been obtained from complete enumeration of the population using the same instrument. Results are subject to both sampling and non-sampling errors. Non-sampling errors include biases from inaccurate reporting, processing, and tabulation, etc., as well as errors from non-response and incomplete reporting. These types of errors cannot be measured readily. However, to the extent possible, non-sampling errors can be minimised through the procedures used for data collection, editing, quality control, and non-response adjustment. The variances of the survey estimates are used to measure sampling errors. The variance estimation methodology is discussed below.

(i) Variance estimation

The most commonly used methods for estimating variances of survey estimates from complex surveys such as the QLFS, are the Taylor-series Linearization, Jackknife Replication, Balanced Repeated Replication (BRR), and Bootstrap methods (Wolter, 2007)¹. The Fay's BRR method has been used for variance estimation in the QLFS because of its simplicity.

(ii) Coefficient of variation

It is more useful in many situations to assess the size of the standard error relative to the magnitude of the characteristic being measured (the standard error is defined as the square root of the variance). The **coefficient of variation** (cv) provides such a measure. It is the **ratio of the standard error of the survey estimate to the value of the estimate itself expressed as a percentage**. It is very useful in comparing the precision of several different survey estimates, where their sizes or scale differ from one another.

(iii) P-value of an estimate of change

The p-value corresponding to an estimate of change is the probability of observing a value larger than the particular observed value under the hypothesis that there is no real change. If p-value < 0,01, the difference is highly significant; if p-value is between 0,01 and 0,05, the difference is significant; and if p-value > 0,05, the difference is not significant.

¹ Wolter KM, 2007. *Introduction to Variance Estimation*, 2nd Edition. New York: Springer-Verlag.

7. Definitions

Discouraged work-seeker is a person who was not employed during the reference period, wanted to work, was available to work/start a business but did not take active steps to find work during the last four weeks, provided that the main reason given for not seeking work was any of the following: no jobs available in the area; unable to find work requiring his/her skills; lost hope of finding any kind of work.

Economic activities are those that contribute to the production of goods and services in the country. There are two types of economic activities, and they are: (1) Market production activities (work done for others and usually associated with pay or profit); and (2) Non-market production activities (work done for the benefit of the household, e.g. subsistence farming).

Employed persons are those aged 15–64 years who, during the reference week: did any work for at least one hour; or had a job or business but were not at work (temporarily absent).

Employment-to-population ratio (labour absorption rate) is the proportion of the working-age population that is employed.

Informal employment identifies persons who are in precarious employment situations irrespective of whether or not the entity for which they work is in the formal or informal sector. Persons in informal employment therefore consist of all persons in the informal sector; employees in the formal sector; and persons working in private households who are not entitled to basic benefits such as pension or medical aid contributions from their employer, and who do not have a written contract of employment.

Informal sector: The informal sector has the following two components:

- i) Employees working in establishments that employ less than five employees, who do not deduct income tax from their salaries/wages; and
- ii) Employers, own-account workers and persons helping unpaid in their household business who are not registered for either income tax or value-added tax.

The **labour force** comprises all persons who are employed plus all persons who are unemployed.

Labour force participation rate is the proportion of the working-age population that is either employed or unemployed.

Long-term unemployment: Persons in long-term unemployment are those individuals among the unemployed who were without work and trying to find a job or start a business for one year or more.

Not economically active: Persons aged 15–64 years who are neither employed nor unemployed in the reference week.

Persons in **underemployment (time-related)** are employed persons who were willing and available to work additional hours, whose total number of hours actually worked during the reference period was below 35 hours per week.

Underutilised labour comprises three groups as follows: persons who are underemployed, persons who are unemployed, and persons who are discouraged.

Unemployed persons are those (aged 15–64 years) who:

- a) Were not employed in the reference week **and**;
- b) Actively looked for work or tried to start a business in the four weeks preceding the survey interview **and**;
- c) Were available for work, i.e. would have been able to start work or a business in the reference week **or**;
- d) Had not actively looked for work in the past four weeks but had a job or business to start at a definite date in the future and were available.

Unemployment rate is the proportion of the labour force that is unemployed.

The **working-age population** comprises all persons aged 15–64 years.

Appendix 1

Table 1: Population of working age (15–64 years)									
	Apr–Jun 2009	Jul–Sep 2009	Oct–Dec 2009	Jan–Mar 2010	Apr–Jun 2010	Qtr-to-qtr change	Year-on-year change	Qtr-to-qtr change	Year-on- year change
	Thousand	Thousand	Thousand	Thousand	Thousand	Thousand	Thousand	Per cent	Per cent
Both sexes	31 080	31 172	31 261	31 350	31 399	49	319	0,2	1,0
Women	16 252	16 293	16 333	16 372	16 394	22	142	0,1	0,9
Men	14 828	14 879	14 928	14 978	15 005	27	177	0,2	1,2
Population groups	31 080	31 172	31 261	31 350	31 399	49	319	0,2	1,0
Black African	24 129	24 215	24 298	24 381	24 427	46	298	0,2	1,2
Coloured	2 977	2 987	2 997	3 007	3 013	6	36	0,2	1,2
Indian	891	895	899	903	905	2	14	0,2	1,6
White	3 083	3 075	3 067	3 059	3 054	-5	-29	-0,2	-0,9
RSA	31 080	31 172	31 261	31 350	31 399	49	319	0,2	1,0
Western Cape	3 495	3 506	3 516	3 527	3 532	5	37	0,1	1,1
Eastern Cape	3 998	4 010	4 021	4 033	4 040	7	42	0,2	1,1
Northern Cape	707	708	709	710	710	0	3	0,0	0,4
Free State	1 865	1 868	1 870	1 872	1 872	0	7	0,0	0,4
KwaZulu-Natal	6 362	6 384	6 405	6 426	6 439	13	77	0,2	1,2
North West	2 183	2 187	2 190	2 194	2 195	1	12	0,0	0,5
Gauteng	7 149	7 167	7 184	7 201	7 209	8	60	0,1	0,8
Mpumalanga	2 210	2 218	2 225	2 233	2 237	4	27	0,2	1,2
Limpopo	3 111	3 126	3 140	3 154	3 164	10	53	0,3	1,7

Due to rounding, numbers do not necessarily add up to totals.

Table 2: Labour force characteristics by sex – All population groups									
	Apr–Jun 2009	Jul–Sep 2009	Oct–Dec 2009	Jan–Mar 2010	Apr–Jun 2010	Qtr-to-qtr change	Year-on-year change	Qtr-to-qtr change	Year-on- year change
	Thousand	Thousand	Thousand	Thousand	Thousand	Thousand	Thousand	Per cent	Per cent
Both sexes									
Population 15–64 yrs	31 080	31 172	31 261	31 350	31 399	49	319	0,2	1,0
Labour force	17 495	17 077	17 138	17 113	17 054	-59	-441	-0,3	-2,5
Employed	13 369	12 885	12 974	12 803	12 742	-61	-627	-0,5	-4,7
Formal sector (non-agricultural)	9 356	9 073	9 114	8 974	8 845	-129	-511	-1,4	-5,5
Informal sector (non-agricultural)	2 109	1 993	2 109	2 009	2 124	115	15	5,7	0,7
Agriculture	710	653	615	650	618	-32	-92	-4,9	-13,0
Private households	1 194	1 166	1 135	1 169	1 155	-14	-39	-1,2	-3,3
Unemployed	4 125	4 192	4 165	4 310	4 312	2	187	0,0	4,5
Not economically active	13 585	14 095	14 123	14 237	14 346	109	761	0,8	5,6
Discouraged work-seekers	1 517	1 632	1 686	1 839	1 907	68	390	3,7	25,7
Other(not economically active)	12 068	12 463	12 437	12 399	12 438	39	370	0,3	3,1
Rates (%)									
Unemployment rate	23,6	24,5	24,3	25,2	25,3	0,1	1,7		
Employed / population ratio (absorption)	43,0	41,3	41,5	40,8	40,6	-0,2	-2,4		
Labour force participation rate	56,3	54,8	54,8	54,6	54,3	-0,3	-2,0		
Women									
Population 15–64 yrs	16 252	16 293	16 333	16 372	16 394	22	142	0,1	0,9
Labour force	8 037	7 862	7 818	7 849	7 800	-49	-237	-0,6	-2,9
Employed	5 973	5 782	5 785	5 703	5 647	-56	-326	-1,0	-5,5
Formal sector (non-agricultural)	3 840	3 726	3 741	3 674	3 590	-84	-250	-2,3	-6,5
Informal sector (non-agricultural)	965	912	944	883	933	50	-32	5,7	-3,3
Agriculture	217	223	208	244	214	-30	-3	-12,3	-1,4
Private households	951	921	891	901	910	9	-41	1,0	-4,3
Unemployed	2 065	2 080	2 033	2 146	2 152	6	87	0,3	4,2
Not economically active	8 215	8 431	8 515	8 524	8 595	71	380	0,8	4,6
Discouraged work-seekers	880	925	990	1 042	1 070	28	190	2,7	21,6
Other(not economically active)	7 334	7 506	7 526	7 481	7 525	44	191	0,6	2,6
Rates (%)									
Unemployment rate	25,7	26,5	26,0	27,3	27,6	0,3	1,9		
Employed / population ratio (absorption)	36,8	35,5	35,4	34,8	34,4	-0,4	-2,4		
Labour force participation rate	49,5	48,3	47,9	47,9	47,6	-0,3	-1,9		

Due to rounding, numbers do not necessarily add up to totals.

Note: Employment refers to market production activities.

Table 2: Labour force characteristics by sex – All population groups (concluded)									
	Apr–Jun 2009	Jul–Sep 2009	Oct–Dec 2009	Jan–Mar 2010	Apr–Jun 2010	Qtr-to-qtr change	Year-on- year change	Qtr-to-qtr change	Year-on- year change
	Thousand	Thousand	Thousand	Thousand	Thousand	Thousand	Thousand	Per cent	Per cent
Men									
Population 15–64 yrs	14 828	14 879	14 928	14 978	15 005	27	177	0,2	1,2
Labour force	9 457	9 215	9 321	9 264	9 254	-10	-203	-0,1	-2,1
Employed	7 397	7 102	7 189	7 100	7 094	-6	-303	-0,1	-4,1
Formal sector (non-agricultural)	5 517	5 346	5 372	5 300	5 256	-44	-261	-0,8	-4,7
Informal sector (non-agricultural)	1 144	1 081	1 166	1 126	1 190	64	46	5,7	4,0
Agriculture	494	430	407	406	404	-2	-90	-0,5	-18,2
Private households	243	245	244	268	244	-24	1	-9,0	0,4
Unemployed	2 060	2 113	2 131	2 164	2 160	-4	100	-0,2	4,9
Not economically active	5 371	5 664	5 608	5 714	5 751	37	380	0,6	7,1
Discouraged work-seekers	637	707	697	796	837	41	200	5,2	31,4
Other(not economically active)	4 734	4 957	4 911	4 917	4 914	-3	180	-0,1	3,8
Rates (%)									
Unemployment rate	21,8	22,9	22,9	23,4	23,3	-0,1	1,5		
Employed / population ratio (absorption)	49,9	47,7	48,2	47,4	47,3	-0,1	-2,6		
Labour force participation rate	63,8	61,9	62,4	61,9	61,7	-0,2	-2,1		

Due to rounding, numbers do not necessarily add up to totals.

Note: Employment refers to market production activities.

Table 2.1: Labour force characteristics by population group									
	Apr–Jun 2009	Jul–Sep 2009	Oct–Dec 2009	Jan–Mar 2010	Apr–Jun 2010	Qtr-to-qtr change	Year-on-year change	Qtr-to-qtr change	Year-on- year change
	Thousand	Thousand	Thousand	Thousand	Thousand	Thousand	Thousand	Per cent	Per cent
South Africa									
Population 15–64 yrs	31 080	31 172	31 261	31 350	31 399	49	319	0,2	1,0
Labour force	17 495	17 077	17 138	17 113	17 054	-59	-441	-0,3	-2,5
Employed	13 369	12 885	12 974	12 803	12 742	-61	-627	-0,5	-4,7
Unemployed	4 125	4 192	4 165	4 310	4 312	2	187	0,0	4,5
Not economically active	13 585	14 095	14 123	14 237	14 346	109	761	0,8	5,6
Rates (%)									
Unemployment rate	23,6	24,5	24,3	25,2	25,3	0,1	1,7		
Employed / population ratio (absorption)	43,0	41,3	41,5	40,8	40,6	-0,2	-2,4		
Labour force participation rate	56,3	54,8	54,8	54,6	54,3	-0,3	-2,0		
Black African									
Population 15–64 yrs	24 129	24 215	24 298	24 381	24 427	46	298	0,2	1,2
Labour force	12 877	12 544	12 568	12 490	12 483	-7	-394	-0,1	-3,1
Employed	9 290	8 936	8 968	8 786	8 795	9	-495	0,1	-5,3
Unemployed	3 587	3 609	3 600	3 704	3 687	-17	100	-0,5	2,8
Not economically active	11 252	11 670	11 730	11 892	11 944	52	692	0,4	6,2
Rates (%)									
Unemployment rate	27,9	28,8	28,6	29,7	29,5	-0,2	1,6		
Employed / population ratio (absorption)	38,5	36,9	36,9	36,0	36,0	0,0	-2,5		
Labour force participation rate	53,4	51,8	51,7	51,2	51,1	-0,1	-2,3		
Coloured									
Population 15–64 yrs	2 977	2 987	2 997	3 007	3 013	6	36	0,2	1,2
Labour force	1 942	1 927	1 950	1 966	1 936	-30	-6	-1,5	-0,3
Employed	1 563	1 510	1 544	1 538	1 500	-38	-63	-2,5	-4,0
Unemployed	379	417	406	428	436	8	57	1,9	15,0
Not economically active	1 035	1 060	1 048	1 041	1 077	36	42	3,5	4,1
Rates (%)									
Unemployment rate	19,5	21,6	20,8	21,8	22,5	0,7	3,0		
Employed / population ratio (absorption)	52,5	50,6	51,5	51,1	49,8	-1,3	-2,7		
Labour force participation rate	65,2	64,5	65,1	65,4	64,3	-1,1	-0,9		

Due to rounding, numbers do not necessarily add up to totals.

Note: Employment refers to market production activities.

Table 2.1: Labour force characteristics by population group (concluded)									
	Apr–Jun 2009	Jul–Sep 2009	Oct–Dec 2009	Jan–Mar 2010	Apr–Jun 2010	Qtr-to-qtr change	Year-on-year change	Qtr-to-qtr change	Year-on- year change
	Thousand	Thousand	Thousand	Thousand	Thousand	Thousand	Thousand	Per cent	Per cent
Indian/Asian									
Population 15–64 yrs	891	895	899	903	905	2	14	0,2	1,6
Labour force	521	519	506	532	546	14	25	2,6	4,8
Employed	461	453	450	483	491	8	30	1,7	6,5
Unemployed	59	66	56	49	55	6	-4	12,2	-6,8
Not economically active	370	376	393	371	359	-12	-11	-3,2	-3,0
Rates (%)									
Unemployment rate	11,3	12,7	11,1	9,2	10,1	0,9	-1,2		
Employed / population ratio (absorption)	51,7	50,6	50,1	53,5	54,3	0,8	2,6		
Labour force participation rate	58,4	58,0	56,3	58,9	60,3	1,4	1,9		
White									
Population 15–64 yrs	3 083	3 075	3 067	3 059	3 054	-5	-29	-0,2	-0,9
Labour force	2 155	2 087	2 115	2 125	2 088	-37	-67	-1,7	-3,1
Employed	2 056	1 986	2 012	1 996	1 955	-41	-101	-2,1	-4,9
Unemployed	100	101	103	129	134	5	34	3,9	34,0
Not economically active	928	988	952	934	966	32	38	3,4	4,1
Rates (%)									
Unemployment rate	4,6	4,8	4,9	6,1	6,4	0,3	1,8		
Employed / population ratio (absorption)	66,7	64,6	65,6	65,3	64,0	-1,3	-2,7		
Labour force participation rate	69,9	67,9	69,0	69,5	68,4	-1,1	-1,5		

Due to rounding, numbers do not necessarily add up to totals.

Note: Employment refers to market production activities.

Table 2.2: Labour force characteristics by province									
	Apr–Jun 2009	Jul–Sep 2009	Oct–Dec 2009	Jan–Mar 2010	Apr–Jun 2010	Qtr-to-qtr change	Year-on-year change	Qtr-to-qtr change	Year-on- year change
	Thousand	Thousand	Thousand	Thousand	Thousand	Thousand	Thousand	Per cent	Per cent
South Africa									
Population 15–64 yrs	31 080	31 172	31 261	31 350	31 399	49	319	0,2	1,0
Labour force	17 495	17 077	17 138	17 113	17 054	-59	-441	-0,3	-2,5
Employed	13 369	12 885	12 974	12 803	12 742	-61	-627	-0,5	-4,7
Unemployed	4 125	4 192	4 165	4 310	4 312	2	187	0,0	4,5
Not economically active	13 585	14 095	14 123	14 237	14 346	109	761	0,8	5,6
Discouraged work-seekers	1 517	1 632	1 686	1 839	1 907	68	390	3,7	25,7
Other	12 068	12 463	12 437	12 399	12 438	39	370	0,3	3,1
Rates (%)									
Unemployment rate	23,6	24,5	24,3	25,2	25,3	0,1	1,7		
Employed / population ratio (absorption)	43,0	41,3	41,5	40,8	40,6	-0,2	-2,4		
Labour force participation rate	56,3	54,8	54,8	54,6	54,3	-0,3	-2,0		
Western Cape									
Population 15–64 yrs	3 495	3 506	3 516	3 527	3 532	5	37	0,1	1,1
Labour force	2 388	2 409	2 413	2 404	2 391	-13	3	-0,5	0,1
Employed	1 898	1 868	1 894	1 915	1 869	-46	-29	-2,4	-1,5
Unemployed	490	542	518	489	522	33	32	6,7	6,5
Not economically active	1 107	1 096	1 103	1 122	1 141	19	34	1,7	3,1
Discouraged work-seekers	33	38	42	51	58	7	25	13,7	75,8
Other	1 074	1 058	1 061	1 072	1 084	12	10	1,1	0,9
Rates (%)									
Unemployment rate	20,5	22,5	21,5	20,3	21,8	1,5	1,3		
Employed / population ratio (absorption)	54,3	53,3	53,9	54,3	52,9	-1,4	-1,4		
Labour force participation rate	68,3	68,7	68,6	68,2	67,7	-0,5	-0,6		

Due to rounding, numbers do not necessarily add up to totals.

Note: Employment refers to market production activities.

Table 2.2: Labour force characteristics by province (continued)									
	Apr–Jun 2009	Jul–Sep 2009	Oct–Dec 2009	Jan–Mar 2010	Apr–Jun 2010	Qtr-to-qtr change	Year-on-year change	Qtr-to-qtr change	Year-on- year change
	Thousand	Thousand	Thousand	Thousand	Thousand	Thousand	Thousand	Per cent	Per cent
Eastern Cape									
Population 15–64 yrs	3 998	4 010	4 021	4 033	4 040	7	42	0,2	1,1
Labour force	1 877	1 718	1 732	1 771	1 720	-51	-157	-2,9	-8,4
Employed	1 353	1 258	1 263	1 243	1 243	0	-110	0,0	-8,1
Unemployed	524	460	468	528	477	-51	-47	-9,7	-9,0
Not economically active	2 120	2 292	2 290	2 262	2 320	58	200	2,6	9,4
Discouraged work-seekers	302	326	339	355	376	21	74	5,9	24,5
Other	1 818	1 966	1 950	1 907	1 944	37	126	1,9	6,9
Rates (%)									
Unemployment rate	27,9	26,8	27,0	29,8	27,7	-2,1	-0,2		
Employed / population ratio (absorption)	33,8	31,4	31,4	30,8	30,8	0,0	-3,0		
Labour force participation rate	46,9	42,8	43,0	43,9	42,6	-1,3	-4,3		
Northern Cape									
Population 15–64 yrs	707	708	709	710	710	0	3	0,0	0,4
Labour force	385	365	386	371	368	-3	-17	-0,8	-4,4
Employed	283	255	290	268	258	-10	-25	-3,7	-8,8
Unemployed	102	109	96	103	111	8	9	7,8	8,8
Not economically active	322	343	323	339	342	3	20	0,9	6,2
Discouraged work-seekers	34	31	29	47	39	-8	5	-17,0	14,7
Other	288	313	294	292	303	11	15	3,8	5,2
Rates (%)									
Unemployment rate	26,5	29,9	24,9	27,8	30,1	2,3	3,6		
Employed / population ratio (absorption)	40,0	36,0	40,9	37,7	36,3	-1,4	-3,7		
Labour force participation rate	54,5	51,4	54,4	52,3	52,0	-0,3	-2,5		

Due to rounding, numbers do not necessarily add up to totals.

Note: Employment refers to market production activities.

Table 2.2: Labour force characteristics by province (continued)									
	Apr–Jun 2009	Jul–Sep 2009	Oct–Dec 2009	Jan–Mar 2010	Apr–Jun 2010	Qtr-to-qtr change	Year-on-year change	Qtr-to-qtr change	Year-on- year change
	Thousand	Thousand	Thousand	Thousand	Thousand	Thousand	Thousand	Per cent	Per cent
Free State									
Population 15–64 yrs	1 865	1 868	1 870	1 872	1 872	0	7	0,0	0,4
Labour force	1 059	1 061	1 059	1 055	1 078	23	19	2,2	1,8
Employed	773	758	790	768	776	8	3	1,0	0,4
Unemployed	285	304	268	287	302	15	17	5,2	6,0
Not economically active	806	806	811	817	794	-23	-12	-2,8	-1,5
Discouraged work-seekers	95	91	101	102	87	-15	-8	-14,7	-8,4
Other	712	715	711	715	708	-7	-4	-1,0	-0,6
Rates (%)									
Unemployment rate	26,9	28,6	25,3	27,2	28,0	0,8	1,1		
Employed / population ratio (absorption)	41,4	40,6	42,2	41,0	41,5	0,5	0,1		
Labour force participation rate	56,7	56,9	56,6	56,4	57,6	1,2	0,9		
KwaZulu-Natal									
Population 15–64 yrs	6 362	6 384	6 405	6 426	6 439	13	77	0,2	1,2
Labour force	3 043	3 024	2 983	2 998	2 984	-14	-59	-0,5	-1,9
Employed	2 457	2 458	2 409	2 418	2 362	-56	-95	-2,3	-3,9
Unemployed	586	566	574	580	622	42	36	7,2	6,1
Not economically active	3 319	3 360	3 422	3 428	3 456	28	137	0,8	4,1
Discouraged work-seekers	448	481	452	484	487	3	39	0,6	8,7
Other	2 871	2 878	2 970	2 944	2 969	25	98	0,8	3,4
Rates (%)									
Unemployment rate	19,3	18,7	19,2	19,3	20,8	1,5	1,5		
Employed / population ratio (absorption)	38,6	38,5	37,6	37,6	36,7	-0,9	-1,9		
Labour force participation rate	47,8	47,4	46,6	46,7	46,3	-0,4	-1,5		

Due to rounding, numbers do not necessarily add up to totals.

Note: Employment refers to market production activities.

Table 2.2: Labour force characteristics by province (continued)									
	Apr–Jun 2009	Jul–Sep 2009	Oct–Dec 2009	Jan–Mar 2010	Apr–Jun 2010	Qtr-to-qtr change	Year-on-year change	Qtr-to-qtr change	Year-on- year change
	Thousand	Thousand	Thousand	Thousand	Thousand	Thousand	Thousand	Per cent	Per cent
North West									
Population 15–64 yrs	2 183	2 187	2 190	2 194	2 195	1	12	0,0	0,5
Labour force	1 174	1 094	1 076	1 054	1 078	24	-96	2,3	-8,2
Employed	849	789	786	777	775	-2	-74	-0,3	-8,7
Unemployed	325	306	290	277	303	26	-22	9,4	-6,8
Not economically active	1 009	1 092	1 115	1 140	1 116	-24	107	-2,1	10,6
Discouraged work-seekers	117	130	146	141	163	22	46	15,6	39,3
Other	892	962	969	999	953	-46	61	-4,6	6,8
Rates (%)									
Unemployment rate	27,7	27,9	27,0	26,3	28,1	1,8	0,4		
Employed / population ratio (absorption)	38,9	36,1	35,9	35,4	35,3	-0,1	-3,6		
Labour force participation rate	53,8	50,1	49,1	48,0	49,1	1,1	-4,7		
Gauteng									
Population 15–64 yrs	7 149	7 167	7 184	7 201	7 209	8	60	0,1	0,8
Labour force	5 141	5 013	5 046	5 081	5 063	-18	-78	-0,4	-1,5
Employed	3 953	3 719	3 749	3 703	3 690	-13	-263	-0,4	-6,7
Unemployed	1 188	1 294	1 297	1 378	1 373	-5	185	-0,4	15,6
Not economically active	2 008	2 154	2 138	2 120	2 147	27	139	1,3	6,9
Discouraged work-seekers	160	187	231	236	242	6	82	2,5	51,3
Other	1 848	1 967	1 907	1 885	1 904	19	56	1,0	3,0
Rates (%)									
Unemployment rate	23,1	25,8	25,7	27,1	27,1	0,0	4,0		
Employed / population ratio (absorption)	55,3	51,9	52,2	51,4	51,2	-0,2	-4,1		
Labour force participation rate	71,9	69,9	70,2	70,6	70,2	-0,4	-1,7		

Due to rounding, numbers do not necessarily add up to totals.

Note: Employment refers to market production activities.

Table 2.2: Labour force characteristics by province (concluded)									
	Apr–Jun 2009	Jul–Sep 2009	Oct–Dec 2009	Jan–Mar 2010	Apr–Jun 2010	Qtr-to-qtr change	Year-on-year change	Qtr-to-qtr change	Year-on- year change
	Thousand	Thousand	Thousand	Thousand	Thousand	Thousand	Thousand	Per cent	Per cent
Mpumalanga									
Population 15–64 yrs	2 210	2 218	2 225	2 233	2 237	4	27	0,2	1,2
Labour force	1 221	1 185	1 200	1 205	1 205	0	-16	0,0	-1,3
Employed	897	881	881	852	867	15	-30	1,8	-3,3
Unemployed	324	304	319	353	339	-14	15	-4,0	4,6
Not economically active	989	1 033	1 026	1 028	1 032	4	43	0,4	4,3
Discouraged work-seekers	110	123	126	164	179	15	69	9,1	62,7
Other	879	910	900	864	853	-11	-26	-1,3	-3,0
Rates (%)									
Unemployment rate	26,5	25,7	26,6	29,3	28,1	-1,2	1,6		
Employed / population ratio (absorption)	40,6	39,7	39,6	38,2	38,8	0,6	-1,8		
Labour force participation rate	55,2	53,4	53,9	54,0	53,9	-0,1	-1,3		
Limpopo									
Population 15–64 yrs	3 111	3 126	3 140	3 154	3 164	10	53	0,3	1,7
Labour force	1 206	1 207	1 245	1 174	1 166	-8	-40	-0,7	-3,3
Employed	906	899	910	859	903	44	-3	5,1	-0,3
Unemployed	300	308	335	315	264	-51	-36	-16,2	-12,0
Not economically active	1 905	1 918	1 895	1 980	1 998	18	93	0,9	4,9
Discouraged work-seekers	219	225	219	258	277	19	58	7,4	26,5
Other	1 685	1 693	1 676	1 722	1 721	-1	36	-0,1	2,1
Rates (%)									
Unemployment rate	24,9	25,5	26,9	26,8	22,6	-4,2	-2,3		
Employed / population ratio (absorption)	29,1	28,8	29,0	27,2	28,5	1,3	-0,6		
Labour force participation rate	38,8	38,6	39,6	37,2	36,9	-0,3	-1,9		

Due to rounding, numbers do not necessarily add up to totals.

Note: Employment refers to market production activities.

Table 3.1: Employed by industry and sex – South Africa									
	Apr–Jun 2009	Jul–Sep 2009	Oct–Dec 2009	Jan–Mar 2010	Apr–Jun 2010	Qtr-to-qtr change	Year-on-year change	Qtr-to-qtr change	Year-on-year change
	Thousand	Thousand	Thousand	Thousand	Thousand	Thousand	Thousand	Per cent	Per cent
Both sexes	13 369	12 885	12 974	12 803	12 742	-61	-627	-0,5	-4,7
Agriculture	710	653	615	650	618	-32	-92	-4,9	-13,0
Mining	319	299	296	296	305	9	-14	3,0	-4,4
Manufacturing	1 873	1 723	1 742	1 709	1 656	-53	-217	-3,1	-11,6
Utilities	93	81	98	70	93	23	0	32,9	0,0
Construction	1 117	1 057	1 085	1 021	1 006	-15	-111	-1,5	-9,9
Trade	2 962	2 852	2 873	2 825	2 839	14	-123	0,5	-4,2
Transport	727	737	739	767	734	-33	7	-4,3	1,0
Finance	1 710	1 682	1 759	1 633	1 670	37	-40	2,3	-2,3
Community and social services	2 664	2 627	2 628	2 657	2 659	2	-5	0,1	-0,2
Private households	1 194	1 166	1 135	1 169	1 155	-14	-39	-1,2	-3,3
Other	2	6	3	6	6	0	4	0,0	200,0
Women	5 973	5 782	5 785	5 703	5 647	-56	-326	-1,0	-5,5
Agriculture	217	223	208	244	214	-30	-3	-12,3	-1,4
Mining	41	41	34	34	35	1	-6	2,9	-14,6
Manufacturing	621	576	586	563	563	0	-58	0,0	-9,3
Utilities	24	15	15	12	18	6	-6	50,0	-25,0
Construction	127	133	138	123	112	-11	-15	-8,9	-11,8
Trade	1 473	1 420	1 413	1 396	1 410	14	-63	1,0	-4,3
Transport	151	161	170	173	141	-32	-10	-18,5	-6,6
Finance	781	747	758	685	678	-7	-103	-1,0	-13,2
Community and social services	1 588	1 540	1 567	1 568	1 561	-7	-27	-0,4	-1,7
Private households	951	921	891	901	910	9	-41	1,0	-4,3
Other	0	5	3	3	5	2	5	66,7	.
Men	7 397	7 102	7 189	7 100	7 094	-6	-303	-0,1	-4,1
Agriculture	494	430	407	406	404	-2	-90	-0,5	-18,2
Mining	278	258	262	262	271	9	-7	3,4	-2,5
Manufacturing	1 252	1 147	1 156	1 145	1 092	-53	-160	-4,6	-12,8
Utilities	69	66	83	58	75	17	6	29,3	8,7
Construction	990	924	947	898	894	-4	-96	-0,4	-9,7
Trade	1 489	1 431	1 460	1 430	1 429	-1	-60	-0,1	-4,0
Transport	576	576	569	593	593	0	17	0,0	3,0
Finance	929	936	1 001	948	992	44	63	4,6	6,8
Community and social services	1 075	1 087	1 061	1 089	1 098	9	23	0,8	2,1
Private households	243	245	244	268	244	-24	1	-9,0	0,4
Other	2	2	0	3	1	-2	-1	-66,7	-50,0

For all values of 10 000 or lower the sample size is too small for reliable estimates.

Table 3.2: Employed by industry and province									
	Apr–Jun 2009	Jul–Sep 2009	Oct–Dec 2009	Jan–Mar 2010	Apr–Jun 2010	Qtr-to-qtr change	Year-on-year change	Qtr-to-qtr change	Year-on-year change
	Thousand	Thousand	Thousand	Thousand	Thousand	Thousand	Thousand	Per cent	Per cent
Agriculture	710	653	615	650	618	-32	-92	-4,9	-13,0
Western Cape	146	127	132	177	152	-25	6	-14,1	4,1
Eastern Cape	86	73	66	61	53	-8	-33	-13,1	-38,4
Northern Cape	57	40	50	44	32	-12	-25	-27,3	-43,9
Free State	87	84	74	75	74	-1	-13	-1,3	-14,9
KwaZulu-Natal	103	113	105	115	109	-6	6	-5,2	5,8
North West	45	37	40	41	42	1	-3	2,4	-6,7
Gauteng	40	42	24	29	28	-1	-12	-3,4	-30,0
Mpumalanga	79	74	66	65	74	9	-5	13,8	-6,3
Limpopo	68	63	57	44	53	9	-15	20,5	-22,1
Mining	319	299	296	296	305	9	-14	3,0	-4,4
Western Cape	2	3	3	1	1	0	-1	0,0	-50,0
Eastern Cape	1	4	1	1	2	1	1	100,0	100,0
Northern Cape	11	9	11	9	12	3	1	33,3	9,1
Free State	33	28	37	33	30	-3	-3	-9,1	-9,1
KwaZulu-Natal	11	6	7	8	8	0	-3	0,0	-27,3
North West	125	111	118	125	115	-10	-10	-8,0	-8,0
Gauteng	28	31	20	18	25	7	-3	38,9	-10,7
Mpumalanga	58	58	50	53	55	2	-3	3,8	-5,2
Limpopo	50	49	50	48	58	10	8	20,8	16,0
Manufacturing	1 873	1 723	1 742	1 709	1 656	-53	-217	-3,1	-11,6
Western Cape	304	294	298	288	284	-4	-20	-1,4	-6,6
Eastern Cape	200	158	155	137	131	-6	-69	-4,4	-34,5
Northern Cape	10	15	13	11	12	1	2	9,1	20,0
Free State	74	73	81	71	71	0	-3	0,0	-4,1
KwaZulu-Natal	415	397	388	407	363	-44	-52	-10,8	-12,5
North West	94	88	73	69	80	11	-14	15,9	-14,9
Gauteng	633	554	580	601	585	-16	-48	-2,7	-7,6
Mpumalanga	77	72	77	67	77	10	0	14,9	0,0
Limpopo	65	72	77	57	53	-4	-12	-7,0	-18,5

For all values of 10 000 or lower the sample size is too small for reliable estimates.

Due to rounding, numbers do not necessarily add up to totals.

Table 3.2: Employed by industry and province (continued)									
	Apr–Jun 2009	Jul–Sep 2009	Oct–Dec 2009	Jan–Mar 2010	Apr–Jun 2010	Qtr-to-qtr change	Year-on-year change	Qtr-to-qtr change	Year-on-year change
	Thousand	Thousand	Thousand	Thousand	Thousand	Thousand	Thousand	Per cent	Per cent
Utilities	93	81	98	70	93	23	0	32,9	0,0
Western Cape	6	4	8	8	9	1	3	12,5	50,0
Eastern Cape	4	3	4	3	6	3	2	100,0	50,0
Northern Cape	3	3	4	1	2	1	-1	100,0	-33,3
Free State	3	3	4	4	6	2	3	50,0	100,0
KwaZulu-Natal	8	4	8	5	8	3	0	60,0	0,0
North West	4	4	3	3	3	0	-1	0,0	-25,0
Gauteng	38	40	45	28	41	13	3	46,4	7,9
Mpumalanga	20	13	16	13	10	-3	-10	-23,1	-50,0
Limpopo	7	7	6	6	8	2	1	33,3	14,3
Construction	1 117	1 057	1 085	1 021	1 006	-15	-111	-1,5	-9,9
Western Cape	181	165	177	148	158	10	-23	6,8	-12,7
Eastern Cape	109	104	111	106	109	3	0	2,8	0,0
Northern Cape	22	10	18	15	18	3	-4	20,0	-18,2
Free State	55	57	56	45	49	4	-6	8,9	-10,9
KwaZulu-Natal	233	232	227	234	227	-7	-6	-3,0	-2,6
North West	51	58	57	55	44	-11	-7	-20,0	-13,7
Gauteng	297	264	258	259	249	-10	-48	-3,9	-16,2
Mpumalanga	84	82	80	61	64	3	-20	4,9	-23,8
Limpopo	84	85	100	99	88	-11	4	-11,1	4,8
Trade	2 962	2 852	2 873	2 825	2 839	14	-123	0,5	-4,2
Western Cape	416	413	406	417	402	-15	-14	-3,6	-3,4
Eastern Cape	320	284	275	298	303	5	-17	1,7	-5,3
Northern Cape	42	40	43	46	44	-2	2	-4,3	4,8
Free State	162	163	170	160	166	6	4	3,8	2,5
KwaZulu-Natal	521	519	518	515	501	-14	-20	-2,7	-3,8
North West	194	147	155	156	159	3	-35	1,9	-18,0
Gauteng	860	837	826	784	810	26	-50	3,3	-5,8
Mpumalanga	210	209	226	207	207	0	-3	0,0	-1,4
Limpopo	236	239	254	242	245	3	9	1,2	3,8

For all values of 10 000 or lower the sample size is too small for reliable estimates.
Due to rounding, numbers do not necessarily add up to totals.

Table 3.2: Employed by industry and province (continued)									
	Apr–Jun 2009	Jul–Sep 2009	Oct–Dec 2009	Jan–Mar 2010	Apr–Jun 2010	Qtr-to-qtr change	Year-on-year change	Qtr-to-qtr change	Year-on- year change
	Thousand	Thousand	Thousand	Thousand	Thousand	Thousand	Thousand	Per cent	Per cent
Transport	727	737	739	767	734	-33	7	-4,3	1,0
Western Cape	79	91	86	100	101	1	22	1,0	27,8
Eastern Cape	77	74	79	73	68	-5	-9	-6,8	-11,7
Northern Cape	12	9	13	9	7	-2	-5	-22,2	-41,7
Free State	39	43	44	45	44	-1	5	-2,2	12,8
KwaZulu-Natal	173	172	154	154	158	4	-15	2,6	-8,7
North West	21	21	25	26	23	-3	2	-11,5	9,5
Gauteng	249	256	263	287	254	-33	5	-11,5	2,0
Mpumalanga	40	38	39	39	41	2	1	5,1	2,5
Limpopo	37	33	36	32	39	7	2	21,9	5,4
Finance	1 710	1 682	1 759	1 633	1 670	37	-40	2,3	-2,3
Western Cape	259	270	272	267	269	2	10	0,7	3,9
Eastern Cape	128	128	128	113	111	-2	-17	-1,8	-13,3
Northern Cape	19	21	24	18	22	4	3	22,2	15,8
Free State	67	60	55	57	67	10	0	17,5	0,0
KwaZulu-Natal	280	305	299	268	302	34	22	12,7	7,9
North West	74	71	72	70	64	-6	-10	-8,6	-13,5
Gauteng	743	694	765	713	696	-17	-47	-2,4	-6,3
Mpumalanga	88	78	83	84	79	-5	-9	-6,0	-10,2
Limpopo	51	55	62	42	60	18	9	42,9	17,6
Community and social services	2 664	2 627	2 628	2 657	2 659	2	-5	0,1	-0,2
Western Cape	372	365	383	381	379	-2	7	-0,5	1,9
Eastern Cape	307	319	326	328	329	1	22	0,3	7,2
Northern Cape	78	82	85	84	84	0	6	0,0	7,7
Free State	169	161	169	189	178	-11	9	-5,8	5,3
KwaZulu-Natal	465	478	478	487	468	-19	3	-3,9	0,6
North West	164	175	171	157	168	11	4	7,0	2,4
Gauteng	729	678	667	659	684	25	-45	3,8	-6,2
Mpumalanga	154	159	158	176	172	-4	18	-2,3	11,7
Limpopo	226	210	190	196	197	1	-29	0,5	-12,8

For all values of 10 000 or lower the sample size is too small for reliable estimates.
Due to rounding, numbers do not necessarily add up to totals.

Table 3.2: Employed by industry and province (concluded)									
	Apr–Jun 2009	Jul–Sep 2009	Oct–Dec 2009	Jan–Mar 2010	Apr–Jun 2010	Qtr-to-qtr change	Year-on-year change	Qtr-to-qtr change	Year-on- year change
	Thousand	Thousand	Thousand	Thousand	Thousand	Thousand	Thousand	Per cent	Per cent
Private households	1 194	1 166	1 135	1 169	1 155	-14	-39	-1,2	-3,3
Western Cape	132	134	129	127	112	-15	-20	-11,8	-15,2
Eastern Cape	122	110	119	124	131	7	9	5,6	7,4
Northern Cape	28	26	29	30	27	-3	-1	-10,0	-3,6
Free State	85	85	100	89	92	3	7	3,4	8,2
KwaZulu-Natal	245	234	224	223	220	-3	-25	-1,3	-10,2
North West	79	77	72	74	76	2	-3	2,7	-3,8
Gauteng	334	316	297	321	310	-11	-24	-3,4	-7,2
Mpumalanga	88	98	85	88	87	-1	-1	-1,1	-1,1
Limpopo	81	84	79	92	100	8	19	8,7	23,5

Due to rounding, numbers do not necessarily add up to totals.

Table 3.3: Employed by sector and industry – South Africa

	Apr–Jun 2009	Jul–Sep 2009	Oct–Dec 2009	Jan–Mar 2010	Apr–Jun 2010	Qtr-to-qtr change	Year-on- year change	Qtr-to-qtr change	Year-on- year change
	Thousand	Thousand	Thousand	Thousand	Thousand	Thousand	Thousand	Per cent	Per cent
Total employed	13 369	12 885	12 974	12 803	12 742	-61	-627	-0,5	-4,7
Formal and informal sector (non-agricultural)	11 465	11 066	11 223	10 983	10 969	-14	-496	-0,1	-4,3
Mining	319	299	296	296	305	9	-14	3,0	-4,4
Manufacturing	1 873	1 723	1 742	1 709	1 656	-53	-217	-3,1	-11,6
Utilities	93	81	98	70	93	23	0	32,9	0,0
Construction	1 117	1 057	1 085	1 021	1 006	-15	-111	-1,5	-9,9
Trade	2 962	2 852	2 873	2 825	2 839	14	-123	0,5	-4,2
Transport	727	737	739	767	734	-33	7	-4,3	1,0
Finance	1 710	1 682	1 759	1 633	1 670	37	-40	2,3	-2,3
Community and social services	2 664	2 627	2 628	2 657	2 659	2	-5	0,1	-0,2
Other	2	6	3	6	6	0	4	0,0	200,0
Formal sector (non-agricultural)	9 356	9 073	9 114	8 974	8 845	-129	-511	-1,4	-5,5
Mining	316	297	295	294	304	10	-12	3,4	-3,8
Manufacturing	1 666	1 547	1 546	1 514	1 440	-74	-226	-4,9	-13,6
Utilities	89	80	96	68	93	25	4	36,8	4,5
Construction	832	804	808	764	710	-54	-122	-7,1	-14,7
Trade	1 973	1 882	1 903	1 881	1 848	-33	-125	-1,8	-6,3
Transport	531	558	548	573	537	-36	6	-6,3	1,1
Finance	1 593	1 557	1 597	1 486	1 527	41	-66	2,8	-4,1
Community and social services	2 353	2 341	2 318	2 388	2 380	-8	27	-0,3	1,1
Other	2	6	3	6	6	0	4	0,0	200,0
Informal sector (non-agricultural)	2 109	1 993	2 109	2 009	2 124	115	15	5,7	0,7
Mining	2	2	1	2	1	-1	-1	-50,0	-50,0
Manufacturing	207	176	196	195	215	20	8	10,3	3,9
Utilities	4	2	2	2	1	-1	-3	-50,0	-75,0
Construction	284	253	277	257	297	40	13	15,6	4,6
Trade	989	970	971	944	991	47	2	5,0	0,2
Transport	196	179	191	193	197	4	1	2,1	0,5
Finance	117	126	163	148	143	-5	26	-3,4	22,2
Community and social services	310	286	309	269	279	10	-31	3,7	-10,0
Agriculture	710	653	615	650	618	-32	-92	-4,9	-13,0
Private households	1 194	1 166	1 135	1 169	1 155	-14	-39	-1,2	-3,3

For all values of 10 000 or lower the sample size is too small for reliable estimates.
Due to rounding, numbers do not necessarily add up to totals.

Table 3.4: Employed by province and sector									
	Apr–Jun 2009	Jul–Sep 2009	Oct–Dec 2009	Jan–Mar 2010	Apr–Jun 2010	Qtr-to-qtr change	Year-on- year change	Qtr-to-qtr change	Year-on- year change
	Thousand	Thousand	Thousand	Thousand	Thousand	Thousand	Thousand	Per cent	Per cent
South Africa	13 369	12 885	12 974	12 803	12 742	-61	-627	-0,5	-4,7
Formal sector (non-agricultural)	9 356	9 073	9 114	8 974	8 845	-129	-511	-1,4	-5,5
Informal sector (non-agricultural)	2 109	1 993	2 109	2 009	2 124	115	15	5,7	0,7
Agriculture	710	653	615	650	618	-32	-92	-4,9	-13,0
Private households	1 194	1 166	1 135	1 169	1 155	-14	-39	-1,2	-3,3
Western Cape	1 898	1 868	1 894	1 915	1 869	-46	-29	-2,4	-1,5
Formal sector (non-agricultural)	1 423	1 419	1 441	1 410	1 387	-23	-36	-1,6	-2,5
Informal sector (non-agricultural)	198	187	191	200	218	18	20	9,0	10,1
Agriculture	146	127	132	177	152	-25	6	-14,1	4,1
Private households	132	134	129	127	112	-15	-20	-11,8	-15,2
Eastern Cape	1 353	1 258	1 263	1 243	1 243	0	-110	0,0	-8,1
Formal sector (Non-agricultural)	857	803	799	806	771	-35	-86	-4,3	-10,0
Informal sector (Non-agricultural)	287	272	280	252	287	35	0	13,9	0,0
Agriculture	86	73	66	61	53	-8	-33	-13,1	-38,4
Private households	122	110	119	124	131	7	9	5,6	7,4
Northern Cape	283	255	290	268	258	-10	-25	-3,7	-8,8
Formal sector (non-agricultural)	172	161	180	168	175	7	3	4,2	1,7
Informal sector (non-agricultural)	26	29	31	26	24	-2	-2	-7,7	-7,7
Agriculture	57	40	50	44	32	-12	-25	-27,3	-43,9
Private households	28	26	29	30	27	-3	-1	-10,0	-3,6
Free State	773	758	790	768	776	8	3	1,0	0,4
Formal sector (non-agricultural)	470	458	477	487	485	-2	15	-0,4	3,2
Informal sector (non-agricultural)	131	130	139	117	125	8	-6	6,8	-4,6
Agriculture	87	84	74	75	74	-1	-13	-1,3	-14,9
Private households	85	85	100	89	92	3	7	3,4	8,2
KwaZulu-Natal	2 457	2 458	2 409	2 418	2 362	-56	-95	-2,3	-3,9
Formal sector (non-agricultural)	1 662	1 653	1 649	1 672	1 627	-45	-35	-2,7	-2,1
Informal sector (non-agricultural)	447	458	431	408	407	-1	-40	-0,2	-8,9
Agriculture	103	113	105	115	109	-6	6	-5,2	5,8
Private households	245	234	224	223	220	-3	-25	-1,3	-10,2

Due to rounding, numbers do not necessarily add up to totals.

Table 3.4: Employed by province and sector (concluded)									
	Apr–Jun 2009	Jul–Sep 2009	Oct–Dec 2009	Jan–Mar 2010	Apr–Jun 2010	Qtr-to-qtr change	Year-on- year change	Qtr-to-qtr change	Year-on- year change
	Thousand	Thousand	Thousand	Thousand	Thousand	Thousand	Thousand	Per cent	Per cent
North West	849	789	786	777	775	-2	-74	-0,3	-8,7
Formal sector (non-agricultural)	617	570	570	566	551	-15	-66	-2,7	-10,7
Informal sector (non-agricultural)	108	104	104	96	106	10	-2	10,4	-1,9
Agriculture	45	37	40	41	42	1	-3	2,4	-6,7
Private households	79	77	72	74	76	2	-3	2,7	-3,8
Gauteng	3 953	3 719	3 749	3 703	3 690	-13	-263	-0,4	-6,7
Formal sector (non-agricultural)	3 110	2 971	2 946	2 891	2 848	-43	-262	-1,5	-8,4
Informal sector (non-agricultural)	468	390	481	462	503	41	35	8,9	7,5
Agriculture	40	42	24	29	28	-1	-12	-3,4	-30,0
Private households	334	316	297	321	310	-11	-24	-3,4	-7,2
Mpumalanga	897	881	881	852	867	15	-30	1,8	-3,3
Formal sector (non-agricultural)	533	527	526	516	520	4	-13	0,8	-2,4
Informal sector (non-agricultural)	198	182	204	183	186	3	-12	1,6	-6,1
Agriculture	79	74	66	65	74	9	-5	13,8	-6,3
Private households	88	98	85	88	87	-1	-1	-1,1	-1,1
Limpopo	906	899	910	859	903	44	-3	5,1	-0,3
Formal sector (non-agricultural)	511	509	525	458	481	23	-30	5,0	-5,9
Informal sector (non-agricultural)	246	243	249	265	268	3	22	1,1	8,9
Agriculture	68	63	57	44	53	9	-15	20,5	-22,1
Private households	81	84	79	92	100	8	19	8,7	23,5

Due to rounding, numbers do not necessarily add up to totals.

Table 3.5: Employed by sex and occupation – South Africa									
	Apr–Jun 2009	Jul–Sep 2009	Oct–Dec 2009	Jan–Mar 2010	Apr–Jun 2010	Qtr-to-qtr change	Year-on-year change	Qtr-to-qtr change	Year-on- year change
	Thousand	Thousand	Thousand	Thousand	Thousand	Thousand	Thousand	Per cent	Per cent
Both sexes	13 369	12 885	12 974	12 803	12 742	-61	-627	-0,5	-4,7
Manager	1 022	994	981	977	978	1	-44	0,1	-4,3
Professional	654	703	647	679	735	56	81	8,2	12,4
Technician	1 550	1 493	1 521	1 488	1 408	-80	-142	-5,4	-9,2
Clerk	1 440	1 431	1 462	1 443	1 430	-13	-10	-0,9	-0,7
Sales and services	1 804	1 792	1 844	1 808	1 833	25	29	1,4	1,6
Skilled agriculture	83	72	83	88	112	24	29	27,3	34,9
Craft and related trade	1 779	1 568	1 568	1 576	1 535	-41	-244	-2,6	-13,7
Plant and machine operator	1 186	1 097	1 083	1 048	1 040	-8	-146	-0,8	-12,3
Elementary	2 889	2 812	2 888	2 806	2 769	-37	-120	-1,3	-4,2
Domestic worker	963	924	898	888	903	15	-60	1,7	-6,2
Women	5 973	5 782	5 785	5 703	5 647	-56	-326	-1,0	-5,5
Manager	325	303	287	283	272	-11	-53	-3,9	-16,3
Professional	296	326	294	317	330	13	34	4,1	11,5
Technician	824	802	840	817	801	-16	-23	-2,0	-2,8
Clerk	1 019	1 009	1 029	1 007	984	-23	-35	-2,3	-3,4
Sales and services	895	882	859	852	837	-15	-58	-1,8	-6,5
Skilled agriculture	17	15	23	19	36	17	19	89,5	111,8
Craft and related trade	239	194	211	202	174	-28	-65	-13,9	-27,2
Plant and machine operator	180	173	176	144	147	3	-33	2,1	-18,3
Elementary	1 247	1 185	1 199	1 200	1 200	0	-47	0,0	-3,8
Domestic worker	931	894	866	861	867	6	-64	0,7	-6,9
Men	7 397	7 102	7 189	7 100	7 094	-6	-303	-0,1	-4,1
Manager	697	691	694	694	705	11	8	1,6	1,1
Professional	358	377	352	362	405	43	47	11,9	13,1
Technician	727	691	681	671	607	-64	-120	-9,5	-16,5
Clerk	421	422	433	436	446	10	25	2,3	5,9
Sales and services	909	910	985	956	997	41	88	4,3	9,7
Skilled agriculture	67	57	60	69	76	7	9	10,1	13,4
Craft and related trade	1 540	1 374	1 357	1 373	1 361	-12	-179	-0,9	-11,6
Plant and machine operator	1 006	924	908	904	893	-11	-113	-1,2	-11,2
Elementary	1 642	1 627	1 689	1 606	1 569	-37	-73	-2,3	-4,4
Domestic worker	32	30	31	27	36	9	4	33,3	12,5

Due to rounding, numbers do not necessarily add up to totals.

Table 3.6: Employed by sex and status in employment – South Africa									
	Apr–Jun 2009	Jul–Sep 2009	Oct–Dec 2009	Jan–Mar 2010	Apr–Jun 2010	Qtr-to-qtr change	Year-on-year change	Qtr-to-qtr change	Year-on-year change
	Thousand	Thousand	Thousand	Thousand	Thousand	Thousand	Thousand	Per cent	Per cent
Both sexes	13 369	12 885	12 974	12 803	12 742	-61	-627	-0,5	-4,7
Employee	11 292	11 000	10 976	10 872	10 772	-100	-520	-0,9	-4,6
Employer	722	627	680	664	664	0	-58	0,0	-8,0
Own-account worker	1 233	1 141	1 202	1 162	1 192	30	-41	2,6	-3,3
Unpaid household member	122	116	116	105	114	9	-8	8,6	-6,6
Women	5 973	5 782	5 785	5 703	5 647	-56	-326	-1,0	-5,5
Employee	5 099	4 974	4 954	4 897	4 840	-57	-259	-1,2	-5,1
Employer	156	129	138	153	134	-19	-22	-12,4	-14,1
Own-account worker	627	592	605	575	602	27	-25	4,7	-4,0
Unpaid household member	90	86	88	79	71	-8	-19	-10,1	-21,1
Men	7 397	7 102	7 189	7 100	7 094	-6	-303	-0,1	-4,1
Employee	6 193	6 026	6 022	5 975	5 932	-43	-261	-0,7	-4,2
Employer	566	498	542	511	530	19	-36	3,7	-6,4
Own-account worker	606	549	597	587	590	3	-16	0,5	-2,6
Unpaid household member	32	30	28	26	42	16	10	61,5	31,3

Due to rounding, numbers do not necessarily add up to totals.

Table 3.7: Employed by sex and usual hours of work – South Africa									
	Apr–Jun 2009	Jul–Sep 2009	Oct–Dec 2009	Jan–Mar 2010	Apr–Jun 2010	Qtr-to-qtr change	Year-on-year change	Qtr-to-qtr change	Year-on- year change
	Thousand	Thousand	Thousand	Thousand	Thousand	Thousand	Thousand	Per cent	Per cent
Both sexes	13 369	12 885	12 974	12 803	12 742	-61	-627	-0,5	-4,7
Working less than 15 hours per week	284	272	258	244	237	-7	-47	-2,9	-16,5
Working 15–29 hours per week	843	812	813	767	808	41	-35	5,3	-4,2
Working 30–39 hours per week	972	971	928	957	918	-39	-54	-4,1	-5,6
Working 40–45 hours per week	7 187	6 864	6 827	6 925	7 006	81	-181	1,2	-2,5
Working more than 45 hours per week	4 083	3 966	4 148	3 909	3 773	-136	-310	-3,5	-7,6
Women	5 973	5 782	5 785	5 703	5 647	-56	-326	-1,0	-5,5
Working less than 15 hours per week	182	164	171	148	150	2	-32	1,4	-17,6
Working 15–29 hours per week	566	543	555	521	549	28	-17	5,4	-3,0
Working 30–39 hours per week	629	615	590	611	589	-22	-40	-3,6	-6,4
Working 40–45 hours per week	3 110	3 009	2 985	2 992	3 009	17	-101	0,6	-3,2
Working more than 45 hours per week	1 485	1 451	1 483	1 431	1 351	-80	-134	-5,6	-9,0
Men	7 397	7 102	7 189	7 100	7 094	-6	-303	-0,1	-4,1
Working less than 15 hours per week	102	108	87	96	88	-8	-14	-8,3	-13,7
Working 15–29 hours per week	277	269	258	246	258	12	-19	4,9	-6,9
Working 30–39 hours per week	343	356	338	347	329	-18	-14	-5,2	-4,1
Working 40–45 hours per week	4 077	3 855	3 842	3 933	3 997	64	-80	1,6	-2,0
Working more than 45 hours per week	2 598	2 515	2 665	2 478	2 422	-56	-176	-2,3	-6,8

Due to rounding, numbers do not necessarily add up to totals.

Table 3.8: Time-related underemployment – South Africa									
	Apr–Jun 2009	Jul–Sep 2009	Oct–Dec 2009	Jan–Mar 2010	Apr–Jun 2010	Qtr-to-qtr change	Year-on- year change	Qtr-to-qtr change	Year-on- year change
	Thousand	Thousand	Thousand	Thousand	Thousand	Thousand	Thousand	Per cent	Per cent
Both sexes	651	667	592	588	550	-38	-101	-6,5	-15,5
Women	420	423	376	371	348	-23	-72	-6,2	-17,1
Men	230	245	216	217	202	-15	-28	-6,9	-12,2
As percentage of the labour force (both sexes)	3,7	3,9	3,5	3,4	3,2	-0,2	-0,5		
Women	5,2	5,4	4,8	4,7	4,5	-0,2	-0,7		
Men	2,4	2,7	2,3	2,3	2,2	-0,1	-0,2		
As percentage of total employment (both sexes)	4,9	5,2	4,6	4,6	4,3	-0,3	-0,6		
Women	7,0	7,3	6,5	6,5	6,2	-0,3	-0,8		
Men	3,1	3,4	3,0	3,1	2,8	-0,3	-0,3		
Industry	651	667	592	588	550	-38	-101	-6,5	-15,5
Agriculture	16	13	5	6	14	8	-2	133,3	-12,5
Mining				0	0	0		.	.
Manufacturing	41	43	30	36	34	-2	-7	-5,6	-17,1
Utilities					0			.	.
Construction	56	51	47	51	58	7	2	13,7	3,6
Trade	131	134	109	113	101	-12	-30	-10,6	-22,9
Transport	20	18	14	22	15	-7	-5	-31,8	-25,0
Finance	34	37	38	32	27	-5	-7	-15,6	-20,6
Community and social services	98	100	94	90	83	-7	-15	-7,8	-15,3
Private households	253	271	256	238	218	-20	-35	-8,4	-13,8
Occupation	651	667	592	588	550	-38	-101	-6,5	-15,5
Manager	10	14	4	8	5	-3	-5	-37,5	-50,0
Professional	16	11	5	10	11	1	-5	10,0	-31,3
Technician	50	42	39	34	29	-5	-21	-14,7	-42,0
Clerk	28	23	19	30	32	2	4	6,7	14,3
Sales and services	59	67	58	66	56	-10	-3	-15,2	-5,1
Skilled agriculture	4	3	3	4	7	3	3	75,0	75,0
Craft and related trade	58	56	48	55	63	8	5	14,5	8,6
Plant and machine operator	15	22	15	11	10	-1	-5	-9,1	-33,3
Elementary	207	223	206	208	175	-33	-32	-15,9	-15,5
Domestic worker	203	205	194	161	162	1	-41	0,6	-20,2

For all values of 10 000 or lower the sample size is too small for reliable estimates.

Table 4: Characteristics of the unemployed – South Africa									
	Apr–Jun 2009	Jul–Sep 2009	Oct–Dec 2009	Jan–Mar 2010	Apr–Jun 2010	Qtr-to-qtr change	Year-on- year change	Qtr-to-qtr change	Year-on- year change
	Thousand	Thousand	Thousand	Thousand	Thousand	Thousand	Thousand	Per cent	Per cent
Unemployed	4 125	4 192	4 165	4 310	4 312	2	187	0,0	4,5
Job losers	1 427	1 477	1 429	1 410	1 443	33	16	2,3	1,1
Job leavers	345	338	333	284	285	1	-60	0,4	-17,4
New entrants	1 670	1 615	1 687	1 785	1 787	2	117	0,1	7,0
Re-entrants	173	193	184	209	201	-8	28	-3,8	16,2
Other	510	570	531	622	595	-27	85	-4,3	16,7
Unemployed	4 125	4 192	4 165	4 310	4 312	2	187	0,0	4,5
Long-term unemployment 1 year and more)	2 484	2 489	2 468	2 739	2 749	10	265	0,4	10,7
Short-term unemployment (less than 1 year)	1 641	1 703	1 696	1 571	1 563	-8	-78	-0,5	-4,8
Long-term unemployment (%)									
Proportion of the labour force	14,2	14,6	14,4	16,0	16,1	0,1	1,9		
Proportion of the unemployed	60,2	59,4	59,3	63,5	63,8	0,3	3,6		
Those who have worked in the past 5 years									
Previous occupation	1 946	2 008	1 947	1 903	1 929	26	-17	1,4	-0,9
Manager	30	32	40	43	44	1	14	2,3	46,7
Professional	25	23	29	34	27	-7	2	-20,6	8,0
Technician	81	86	78	106	110	4	29	3,8	35,8
Clerk	193	213	187	218	218	0	25	0,0	13,0
Sales and services	306	292	266	281	280	-1	-26	-0,4	-8,5
Skilled agriculture	7	8	9	6	13	7	6	116,7	85,7
Craft and related trade	356	393	373	401	344	-57	-12	-14,2	-3,4
Plant and machine operator	174	188	165	167	172	5	-2	3,0	-1,1
Elementary	595	614	629	513	555	42	-40	8,2	-6,7
Domestic worker	180	158	171	134	169	35	-11	26,1	-6,1
Other	0			1					

For all values of 10 000 or lower the sample size is too small for reliable estimates.

Due to rounding, numbers do not necessarily add up to totals.

Table 4: Characteristics of the unemployed – South Africa (concluded)									
	Apr–Jun 2009	Jul–Sep 2009	Oct–Dec 2009	Jan–Mar 2010	Apr–Jun 2010	Qtr-to-qtr change	Year-on- year change	Qtr-to-qtr change	Year-on- year change
	Thousand	Thousand	Thousand	Thousand	Thousand	Thousand	Thousand	Per cent	Per cent
Previous industry	1 946	2 008	1 947	1 903	1 929	26	-17	1,4	-0,9
Agriculture	124	113	97	100	103	3	-21	3,0	-16,9
Mining	27	38	30	37	32	-5	5	-13,5	18,5
Manufacturing	316	312	307	297	289	-8	-27	-2,7	-8,5
Utilities	12	9	9	8	7	-1	-5	-12,5	-41,7
Construction	329	353	363	322	310	-12	-19	-3,7	-5,8
Trade	459	475	447	481	482	1	23	0,2	5,0
Transport	95	96	96	88	90	2	-5	2,3	-5,3
Finance	207	231	220	226	211	-15	4	-6,6	1,9
Community and social services	146	174	167	177	194	17	48	9,6	32,9
Private households	230	206	211	166	212	46	-18	27,7	-7,8
Other	0	1		1	1	0	1	0,0	

For all values of 10 000 or lower the sample size is too small for reliable estimates.

Due to rounding, numbers do not necessarily add up to totals.

Table 5: Characteristics of the not economically active – South Africa									
	Apr–Jun 2009	Jul–Sep 2009	Oct–Dec 2009	Jan–Mar 2010	Apr–Jun 2010	Qtr-to-qtr change	Year-on-year change	Qtr-to-qtr change	Year-on- year change
	Thousand	Thousand	Thousand	Thousand	Thousand	Thousand	Thousand	Per cent	Per cent
Not economically active	13 585	14 095	14 123	14 237	14 346	109	761	0,8	5,6
Student	5 693	5 902	5 968	5 841	5 964	123	271	2,1	4,8
Homemaker	2 652	2 757	2 747	2 753	2 849	96	197	3,5	7,4
Illness/disability	1 799	1 821	1 773	1 819	1 794	-25	-5	-1,4	-0,3
Too old/young to work	1 062	1 109	1 119	1 167	1 123	-44	61	-3,8	5,7
Discouraged work-seekers	1 517	1 632	1 686	1 839	1 907	68	390	3,7	25,7
Other	862	875	830	820	708	-112	-154	-13,7	-17,9
Inactivity rate by age (both sexes)	43,7	45,2	45,2	45,4	45,7	0,3	2,0		
15–24 yrs	71,4	73,6	73,2	73,6	73,2	-0,4	1,8		
25–54 yrs	26,1	27,2	27,3	27,4	28,2	0,8	2,1		
55–64 yrs	58,1	59,6	59,7	60,2	59,7	-0,5	1,6		
Inactivity rate by age (women)	50,5	51,7	52,1	52,1	52,4	0,3	1,9		
15–24 yrs	74,1	75,9	75,9	76,5	75,9	-0,6	1,8		
25–54 yrs	35,4	36,2	36,8	36,4	37,4	1,0	2,0		
55–64 yrs	68,5	70,2	69,8	69,9	69,2	-0,7	0,7		
Inactivity rate by age (men)	36,2	38,1	37,6	38,1	38,3	0,2	2,1		
15–24 yrs	68,8	71,4	70,6	70,8	70,6	-0,2	1,8		
25–54 yrs	15,6	17,1	16,6	17,3	17,7	0,4	2,1		
55–64 yrs	45,0	46,2	46,8	47,7	47,5	-0,2	2,5		

For all values of 10 000 or lower the sample size is too small for reliable estimates.

Due to rounding, numbers do not necessarily add up to totals.

Table 6: Socio-demographic characteristics – South Africa

	Apr–Jun 2009	Jul–Sep 2009	Oct–Dec 2009	Jan–Mar 2010	Apr–Jun 2010	Qtr-to-qtr change	Year-on-year change	Qtr-to-qtr change	Year-on-year change
	Thousand	Thousand	Thousand	Thousand	Thousand	Thousand	Thousand	Per cent	Per cent
Age group of the employed	13 369	12 885	12 974	12 803	12 742	-61	-627	-0,5	-4,7
15–24 yrs	1 489	1 373	1 399	1 337	1 325	-12	-164	-0,9	-11,0
25–34 yrs	4 480	4 322	4 344	4 292	4 251	-41	-229	-1,0	-5,1
35–44 yrs	3 674	3 595	3 596	3 588	3 566	-22	-108	-0,6	-2,9
45–54 yrs	2 586	2 504	2 541	2 506	2 512	6	-74	0,2	-2,9
55–64 yrs	1 140	1 090	1 094	1 080	1 088	8	-52	0,7	-4,6
Age group of the unemployed	4 125	4 192	4 165	4 310	4 312	2	187	0,0	4,5
15–24 yrs	1 382	1 286	1 308	1 339	1 397	58	15	4,3	1,1
25–34 yrs	1 678	1 740	1 729	1 773	1 726	-47	48	-2,7	2,9
35–44 yrs	685	752	742	781	745	-36	60	-4,6	8,8
45–54 yrs	317	334	307	331	346	15	29	4,5	9,1
55–64 yrs	64	79	78	86	97	11	33	12,8	51,6
Age group of the not economically active	13 585	14 095	14 123	14 237	14 346	109	761	0,8	5,6
15–24 yrs	7 175	7 418	7 403	7 467	7 438	-29	263	-0,4	3,7
25–34 yrs	2 146	2 248	2 246	2 261	2 353	92	207	4,1	9,6
35–44 yrs	1 286	1 328	1 367	1 364	1 438	74	152	5,4	11,8
45–54 yrs	1 307	1 376	1 369	1 384	1 364	-20	57	-1,4	4,4
55–64 yrs	1 671	1 724	1 738	1 762	1 752	-10	81	-0,6	4,8
Highest level of education of the employed	13 369	12 885	12 974	12 803	12 742	-61	-627	-0,5	-4,7
No schooling	490	455	438	420	393	-27	-97	-6,4	-19,8
Less than primary completed	1 256	1 162	1 175	1 106	1 094	-12	-162	-1,1	-12,9
Primary completed	704	646	664	608	643	35	-61	5,8	-8,7
Secondary not completed	4 455	4 178	4 232	4 186	4 219	33	-236	0,8	-5,3
Secondary completed	3 871	3 820	3 932	3 916	3 790	-126	-81	-3,2	-2,1
Tertiary	2 466	2 454	2 388	2 399	2 406	7	-60	0,3	-2,4
Other	128	168	146	168	197	29	69	17,3	53,9

Due to rounding, numbers do not necessarily add up to totals.

Table 6: Socio-demographic characteristics – South Africa (continued)									
	Apr–Jun 2009	Jul–Sep 2009	Oct–Dec 2009	Jan–Mar 2010	Apr–Jun 2010	Qtr-to-qtr change	Year-on- year change	Qtr-to-qtr change	Year-on- year change
	Thousand	Thousand	Thousand	Thousand	Thousand	Thousand	Thousand	Per cent	Per cent
Highest level of education of the unemployed	4 125	4 192	4 165	4 310	4 312	2	187	0,0	4,5
No schooling	94	90	94	80	67	-13	-27	-16,3	-28,7
Less than primary completed	383	370	352	347	340	-7	-43	-2,0	-11,2
Primary completed	203	225	193	217	189	-28	-14	-12,9	-6,9
Secondary not completed	1 863	1 918	1 905	1 970	1 967	-3	104	-0,2	5,6
Secondary completed	1 342	1 322	1 364	1 402	1 458	56	116	4,0	8,6
Tertiary	213	239	224	255	252	-3	39	-1,2	18,3
Other	27	29	34	39	39	0	12	0,0	44,4
Highest level of education of the not economically active	13 585	14 095	14 123	14 237	14 346	109	761	0,8	5,6
No schooling	916	882	848	843	852	9	-64	1,1	-7,0
Less than primary completed	1 911	1 992	2 043	1 873	1 933	60	22	3,2	1,2
Primary completed	1 080	1 102	1 190	994	1 148	154	68	15,5	6,3
Secondary not completed	7 143	7 397	7 424	7 493	7 517	24	374	0,3	5,2
Secondary completed	2 104	2 237	2 155	2 542	2 388	-154	284	-6,1	13,5
Tertiary	334	360	368	375	387	12	53	3,2	15,9
Other	97	125	95	118	120	2	23	1,7	23,7
Current marital status of the employed	13 369	12 885	12 974	12 803	12 742	-61	-627	-0,5	-4,7
Married	5 464	5 376	5 331	5 342	5 316	-26	-148	-0,5	-2,7
Living together like husband and wife	1 562	1 515	1 488	1 538	1 442	-96	-120	-6,2	-7,7
Widow/widower	446	425	460	453	482	29	36	6,4	8,1
Divorced or separated	501	434	480	435	449	14	-52	3,2	-10,4
Never married	5 396	5 135	5 216	5 034	5 053	19	-343	0,4	-6,4
Current marital status of the unemployed	4 125	4 192	4 165	4 310	4 312	2	187	0,0	4,5
Married	662	713	684	702	685	-17	23	-2,4	3,5
Living together like husband and wife	458	504	424	454	468	14	10	3,1	2,2
Widow/widower	56	53	63	52	49	-3	-7	-5,8	-12,5
Divorced or separated	67	68	61	88	76	-12	9	-13,6	13,4
Never married	2 882	2 854	2 932	3 015	3 033	18	151	0,6	5,2

Due to rounding, numbers do not necessarily add up to totals.

Table 6: Socio-demographic characteristics – South Africa (concluded)									
	Apr–Jun 2009	Jul–Sep 2009	Oct–Dec 2009	Jan–Mar 2010	Apr–Jun 2010	Qtr-to-qtr change	Year-on- year change	Qtr-to-qtr change	Year-on- year change
	Thousand	Thousand	Thousand	Thousand	Thousand	Thousand	Thousand	Per cent	Per cent
Current marital status of the not economically active	13 585	14 095	14 123	14 237	14 346	109	761	0,8	5,6
Married	2 766	2 873	2 914	2 854	2 866	12	100	0,4	3,6
Living together like husband and wife	671	739	730	763	753	-10	82	-1,3	12,2
Widow/widower	642	660	662	640	658	18	16	2,8	2,5
Divorced or separated	230	236	246	233	251	18	21	7,7	9,1
Never married	9 276	9 586	9 571	9 747	9 818	71	542	0,7	5,8

Due to rounding, numbers do not necessarily add up to totals.

Table 7: Involvement in non-market activities and labour market status by province									
	Apr-Jun 2009	Jul-Sep 2009	Oct-Dec 2009	Jan-Mar 2010	Apr-Jun 2010	Qtr-to-qtr change	Year-on- year change	Qtr-to- qtr change	Year-on- year change
	Thousand	Thousand	Thousand	Thousand	Thousand	Thousand	Thousand	Per cent	Per cent
South Africa									
Subsistence farming	1 386	1 232	1 506	1 449	1 302	-147	-84	-10,1	-6,1
Fetching water or collecting wood/dung	2 965	3 038	2 854	2 903	2 807	-96	-158	-3,3	-5,3
Produce other goods for household use	55	52	54	84	82	-2	27	-2,4	49,1
Construction or major repairs to own house	154	144	131	135	144	9	-10	6,7	-6,5
Hunting or fishing for household use	11	17	22	30	18	-12	7	-40,0	63,6
Involvement in at least one activity	3 712	3 711	3 713	3 686	3 425	-261	-287	-7,1	-7,7
Unemployed	560	548	589	602	515	-87	-45	-14,5	-8,0
Not economically active	3 151	3 163	3 125	3 084	2 909	-175	-242	-5,7	-7,7
Eastern Cape									
Subsistence farming	519	455	510	473	496	23	-23	4,9	-4,4
Fetching water or collecting wood/dung	589	654	616	645	735	90	146	14,0	24,8
Produce other goods for household use	2	2	7	5	4	-1	2	-20,0	100,0
Construction or major repairs to own house	4	14	21	13	43	30	39	230,8	975,0
Hunting or fishing for household use	1		1	3				.	.
Involvement in at least one activity	908	928	933	932	965	33	57	3,5	6,3
Unemployed	129	104	136	135	107	-28	-22	-20,7	-17,1
Not economically active	780	823	797	797	858	61	78	7,7	10,0
Northern Cape									
Subsistence farming	3	8	6	3	2	-1	-1	-33,3	-33,3
Fetching water or collecting wood/dung	81	82	73	84	80	-4	-1	-4,8	-1,2
Produce other goods for household use	1	0	0	0					
Construction or major repairs to own house	0	0			0		0		
Hunting or fishing for household use	0	0		0					
Involvement in at least one activity	84	84	75	86	81	-5	-3	-5,8	-3,6
Unemployed	20	19	13	24	17	-7	-3	-29,2	-15,0
Not economically active	63	65	62	62	64	2	1	3,2	1,6

For all values of 10 000 or lower the sample size is too small for reliable estimates.
Due to rounding, numbers do not necessarily add up to totals.

Table 7: Involvement in non-market activities and labour market status by province (continued)									
	Apr–Jun 2009	Jul–Sep 2009	Oct–Dec 2009	Jan–Mar 2010	Apr–Jun 2010	Qtr-to-qtr change	Year-on- year change	Qtr-to- qtr change	Year-on- year change
	Thousand	Thousand	Thousand	Thousand	Thousand	Thousand	Thousand	Per cent	Per cent
Free State									
Subsistence farming	34	39	83	62	42	-20	8	-32,3	23,5
Fetching water or collecting wood/dung	16	20	12	13	13	0	-3	0,0	-18,8
Produce other goods for household use	8	7	6	5	5	0	-3	0,0	-37,5
Construction or major repairs to own house	9	8	10	5	9	4	0	80,0	0,0
Hunting or fishing for household use	5	7	7	11	10	-1	5	-9,1	100,0
Involvement in at least one activity	56	57	99	76	54	-22	-2	-28,9	-3,6
Unemployed	12	19	22	15	11	-4	-1	-26,7	-8,3
Not economically active	44	38	77	61	43	-18	-1	-29,5	-2,3
KwaZulu-Natal									
Subsistence farming	531	450	545	491	417	-74	-114	-15,1	-21,5
Fetching water or collecting wood/dung	1 080	997	840	865	826	-39	-254	-4,5	-23,5
Produce other goods for household use	23	29	31	50	60	10	37	20,0	160,9
Construction or major repairs to own house	113	98	65	85	64	-21	-49	-24,7	-43,4
Hunting or fishing for household use	3	2	6	5	3	-2	0	-40,0	0,0
Involvement in at least one activity	1 252	1 176	1 069	1 057	977	-80	-275	-7,6	-22,0
Unemployed	165	157	143	143	142	-1	-23	-0,7	-13,9
Not economically active	1 087	1 019	926	913	835	-78	-252	-8,5	-23,2
North West									
Subsistence farming	76	105	99	83	73	-10	-3	-12,0	-3,9
Fetching water or collecting wood/dung	204	256	238	257	181	-76	-23	-29,6	-11,3
Produce other goods for household use	2	0	3	3	7	4	5	133,3	250,0
Construction or major repairs to own house	1		1		2		1	.	100,0
Hunting or fishing for household use		0	1	2	0	-2		-100,0	.
Involvement in at least one activity	237	291	281	286	224	-62	-13	-21,7	-5,5
Unemployed	56	74	65	81	66	-15	10	-18,5	17,9
Not economically active	181	218	216	206	158	-48	-23	-23,3	-12,7

For all values of 10 000 or lower the sample size is too small for reliable estimates.
Due to rounding, numbers do not necessarily add up to totals.

Table 7: Involvement in non-market activities and labour market status by province (concluded)									
	Apr–Jun 2009	Jul–Sep 2009	Oct–Dec 2009	Jan–Mar 2010	Apr–Jun 2010	Qtr-to-qtr change	Year-on- year change	Qtr-to- qtr change	Year-on- year change
	Thousand	Thousand	Thousand	Thousand	Thousand	Thousand	Thousand	Per cent	Per cent
Gauteng									
Subsistence farming	78	65	51	26	38	12	-40	46,2	-51,3
Fetching water or collecting wood/dung	19	17	18	11	16	5	-3	45,5	-15,8
Produce other goods for household use	10	3	3	12	1	-11	-9	-91,7	-90,0
Construction or major repairs to own house	11	4	10	9	7	-2	-4	-22,2	-36,4
Hunting or fishing for household use		3	4	3				.	.
Involvement in at least one activity	115	91	78	58	54	-4	-61	-6,9	-53,0
Unemployed	44	38	36	32	27	-5	-17	-15,6	-38,6
Not economically active	71	54	42	26	27	1	-44	3,8	-62,0
Mpumalanga									
Subsistence farming	55	55	97	116	87	-29	32	-25,0	58,2
Fetching water or collecting wood/dung	187	208	179	180	162	-18	-25	-10,0	-13,4
Produce other goods for household use	6	9	3	4	3	-1	-3	-25,0	-50,0
Construction or major repairs to own house	9	13	14	14	12	-2	3	-14,3	33,3
Hunting or fishing for household use	1	0	0	0	0	0	-1	.	-100,0
Involvement in at least one activity	228	247	238	245	215	-30	-13	-12,2	-5,7
Unemployed	42	51	59	57	61	4	19	7,0	45,2
Not economically active	186	197	179	188	153	-35	-33	-18,6	-17,7
Limpopo									
Subsistence farming	88	53	115	193	147	-46	59	-23,8	67,0
Fetching water or collecting wood/dung	783	802	878	845	794	-51	11	-6,0	1,4
Produce other goods for household use	4	1	0	5	2	-3	-2	-60,0	-50,0
Construction or major repairs to own house	7	5	8	6	6	0	-1	0,0	-14,3
Hunting or fishing for household use	1	1	3	3	4	1	3	33,3	300,0
Involvement in at least one activity	826	828	939	937	855	-82	29	-8,8	3,5
Unemployed	92	86	114	113	84	-29	-8	-25,7	-8,7
Not economically active	734	742	825	824	771	-53	37	-6,4	5,0

For all values of 10 000 or lower the sample size is too small for reliable estimates.
Due to rounding, numbers do not necessarily add up to totals.

Appendix 2A: Sampling variability for labour force characteristics by sex						
	Jan-Mar 2010 CV	Apr-Jun 2010 CV	Estimate	Lower 95%	Upper 95%	P-value
Both sexes						
Population 15-64 yrs						
Labour Force	3,1	0,5	-59	-219	101	0,47
Employed	3,1	0,7	-61	-206	84	0,41
Formal sector (Non-agricultural)	3,2	1,0	-129	-253	-4	0,04
Informal sector (Non-agricultural)	3,7	2,1	115	25	205	0,01
Agriculture	5,2	4,3	-32	-81	15	0,18
Private households	3,7	3,2	-14	-69	40	0,61
Unemployed	3,6	1,8	2	-132	135	0,98
Not economically active	3,1	0,6	109	-52	268	0,18
Discouraged work-seekers	4,4	3,2	68	-40	177	0,21
Other(not economically active)	3,0	0,7	39	-112	191	0,61
Rates (%)						
Unemployment rate	1,5	1,6	0,1	-0,6	0,8	0,78
Employed / population ratio (Absorption)	0,6	0,7	-0,3	-0,7	0,2	0,27
Labour force participation rate	0,5	0,5	-0,3	-0,8	0,2	0,29
Women						
Population 15-64 yrs						
Labour Force	3,0	0,8	-49	-163	65	0,40
Employed	2,9	1,0	-56	-153	43	0,27
Formal sector (Non-agricultural)	3,2	1,4	-84	-165	-4	0,04
Informal sector (Non-agricultural)	4,0	3,0	50	-5	106	0,07
Agriculture	6,4	5,7	-30	-58	-3	0,03
Private households	3,7	3,2	9	-37	56	0,70
Unemployed	3,8	2,3	6	-87	100	0,90
Not economically active	2,9	0,7	71	-43	185	0,22
Discouraged work-seekers	4,4	3,8	28	-47	103	0,47
Other(not economically active)	2,9	0,8	44	-71	157	0,46
Rates (%)						
Unemployment rate	2,0	2,0	0,3	-0,8	1,3	0,63
Employed / population ratio (Absorption)	0,9	1,0	-0,4	-1,0	0,2	0,21
Labour force participation rate	0,7	0,8	-0,4	-1,1	0,3	0,31

Appendix 2A: Sampling variability for labour force characteristics by sex (Concluded)						
	Jan-Mar 2010 CV	Apr-Jun 2010 CV	Estimate	Lower 95%	Upper 95%	P-value
Men						
Population 15-64 yrs						
Labour Force	3,3	0,6	-10	-110	90	0,84
Employed	3,3	0,8	-6	-104	93	0,91
Formal sector (Non-agricultural)	3,4	1,1	-44	-143	55	0,38
Informal sector (Non-agricultural)	4,3	2,8	64	-1	130	0,06
Agriculture	5,8	5,2	-2	-37	32	0,90
Private households	7,3	7,2	-24	-54	7	0,13
Unemployed	3,9	2,1	-4	-94	85	0,92
Not economically active	3,4	0,9	37	-62	137	0,46
Discouraged work-seekers	5,3	3,9	41	-21	102	0,19
Other(not economically active)	3,3	0,9	-3	-95	88	0,94
Rates (%)						
Unemployment rate	1,9	2,0	0,1	-0,9	0,9	0,96
Employed / population ratio (Absorption)	0,8	0,8	-0,1	-0,8	0,5	0,71
Labour force participation rate	0,6	0,6	-0,2	-0,9	0,5	0,60

Appendix 2.1A: Sampling variability for labour force characteristics by population group						
	Jan-Mar 2010 CV	Apr-Jun 2010 CV	Estimate	Lower 95%	Upper 95%	P-value
South Africa						
Population 15-64 yrs						
Labour Force	3,1	0,5	-59	-219	101	0,47
Employed	3,1	0,7	-61	-206	84	0,41
Unemployed	3,6	1,8	2	-132	135	0,98
Not economically active	3,1	0,6	109	-52	268	0,18
Rates (%)						
Unemployment rate	1,5	1,6	0,1	-0,6	0,8	0,78
Employed / population ratio (Absorption)	0,6	0,7	-0,2	-0,7	0,2	0,27
Labour force participation rate	0,5	0,5	-0,3	-0,8	0,2	0,29
Black/African						
Population 15-64 yrs						
Labour Force	3,1	0,7	-7	-149	135	0,92
Employed	3,0	0,9	9	-120	139	0,88
Unemployed	3,7	2,0	-17	-144	111	0,80
Not economically active	3,1	0,7	52	-89	194	0,47
Rates (%)						
Unemployment rate	1,7	1,8	-0,2	-1,0	0,8	0,80
Employed / population ratio (Absorption)	0,8	0,9	0,0	-0,6	0,5	0,92
Labour force participation rate	0,6	0,7	-0,1	-0,7	0,5	0,67
Coloured						
Population 15-64 yrs						
Labour Force	3,5	1,1	-30	-70	10	0,14
Employed	3,7	1,7	-38	-82	7	0,10
Unemployed	6,3	4,5	8	-25	40	0,65
Not economically active	3,3	2,1	36	-4	76	0,08
Rates (%)						
Unemployment rate	5,2	4,4	0,7	-0,9	2,3	0,38
Employed / population ratio (Absorption)	1,7	1,7	-1,3	-2,8	0,1	0,08
Labour force participation rate	1,2	1,1	-1,1	-2,5	0,2	0,10

Appendix 2.1A: Sampling variability for labour force characteristics by population group (Concluded)						
	Jan-Mar 2010 CV	Apr-Jun 2010 CV	Estimate	Lower 95%	Upper 95%	P-value
Indian/Asian						
Population 15-64 yrs						
Labour Force	4,1	2,1	14	-4	33	0,12
Employed	4,2	2,0	8	-10	26	0,38
Unemployed	11,5	14,6	6	-8	21	0,39
Not economically active	4,8	3,1	-12	-31	6	0,19
Rates (%)						
Unemployment rate	10,5	13,7	0,9	-1,7	3,5	0,48
Employed / population ratio (Absorption)	2,7	2,0	0,8	-1,3	2,8	0,45
Labour force participation rate	2,4	2,1	1,4	-0,6	3,5	0,16
White						
Population 15-64 yrs						
Labour Force	3,5	1,4	-37	-91	18	0,19
Employed	3,6	1,3	-41	-90	7	0,10
Unemployed	11,4	9,4	5	-29	38	0,79
Not economically active	4,4	3,0	32	-23	87	0,25
Rates (%)						
Unemployment rate	10,9	8,9	0,3	-1,2	1,8	0,67
Employed / population ratio (Absorption)	1,3	1,3	-1,3	-2,8	0,3	0,12
Labour force participation rate	1,0	1,4	-1,1	-2,9	0,7	0,23

Appendix 2.2A: Sampling variability for labour force characteristics by province						
	Jan-Mar 2010 CV	Apr-Jun 2010 CV	Estimate	Lower 95%	Upper 95%	P-value
South Africa						
Population 15-64 yrs						
Labour Force	3,1	0,5	-59	-219	101	0,47
Employed	3,1	0,7	-61	-206	84	0,41
Unemployed	3,6	1,8	2	-132	135	0,98
Not economically active	3,1	0,6	109	-52	268	0,18
Discouraged work-seekers	4,4	3,2	68	-40	177	0,21
Other	3,0	0,7	39	-112	191	0,61
Rates (%)						
Unemployment rate	1,5	1,6	0,1	-0,6	0,8	0,78
Employed / population ratio (Absorption)	0,6	0,7	-0,2	-0,7	0,2	0,27
Labour force participation rate	0,5	0,5	-0,3	-0,8	0,2	0,29
Western Cape						
Population 15-64 yrs						
Labour Force	3,5	2,3	-13	-68	42	0,64
Employed	3,7	14,7	-46	-100	9	0,10
Unemployed	5,3	2,3	33	-7	72	0,11
Not economically active	3,5	4,1	19	-36	74	0,50
Discouraged work-seekers	20,0	1,5	7	-20	34	0,61
Other	3,5	1,1	12	-39	63	0,65
Rates (%)						
Unemployment rate	4,0	4,1	1,5	-0,1	3,0	0,06
Employed / population ratio (Absorption)	1,5	1,5	-1,4	-2,9	0,2	0,08
Labour force participation rate	1,1	1,1	-0,5	-2,1	1,1	0,54

Appendix 2.2A: Sampling variability for labour force characteristics by province (Continued)						
	Jan-Mar 2010 CV	Apr-Jun 2010 CV	Estimate	Lower 95%	Upper 95%	P-value
Eastern Cape						
Population 15-64 yrs						
Labour Force	4,3	1,7	-51	-125	23	0,17
Employed	4,4	6,1	0	-55	54	0,99
Unemployed	6,5	1,9	-51	-106	5	0,07
Not economically active	4,2	5,0	58	-16	132	0,12
Discouraged work-seekers	7,4	3,1	21	-20	62	0,31
Other	4,2	2,2	37	-38	111	0,33
Rates (%)						
Unemployment rate	4,3	5,0	-2,1	-4,6	0,4	0,11
Employed / population ratio (Absorption)	3,1	3,1	-0,0	-1,4	1,3	0,93
Labour force participation rate	2,5	2,2	-1,3	-3,2	0,5	0,15
Northern Cape						
Population 15-64 yrs						
Labour Force	5,3	2,7	-3	-21	16	0,81
Employed	5,6	13,8	-10	-29	8	0,28
Unemployed	11,0	3,0	8	-5	21	0,22
Not economically active	5,3	5,6	3	-16	21	0,81
Discouraged work-seekers	11,0	3,6	-8	-20	3	0,15
Other	5,2	2,5	11	-9	30	0,28
Rates (%)						
Unemployment rate	8,6	5,6	2,3	-1,0	5,6	0,16
Employed / population ratio (Absorption)	3,9	3,6	-1,4	-4,1	1,2	0,28
Labour force participation rate	3,2	2,5	-0,3	-2,9	2,3	0,81

Appendix 2.2A: Sampling variability for labour force characteristics by province (Continued)						
	Jan-Mar 2010 CV	Apr-Jun 2010 CV	Estimate	Lower 95%	Upper 95%	P-value
Free State						
Population 15-64 yrs						
Labour Force	3,0	1,6	23	-3	49	0,09
Employed	3,4	9,4	8	-13	28	0,48
Unemployed	5,0	2,1	15	-8	38	0,20
Not economically active	3,0	3,7	-23	-49	3	0,09
Discouraged work-seekers	9,1	1,8	-15	-33	2	0,09
Other	3,0	1,2	-7	-35	20	0,61
Rates (%)						
Unemployment rate	4,1	3,7	0,8	-1,0	2,7	0,36
Employed / population ratio (Absorption)	2,0	1,8	0,5	-0,7	1,5	0,48
Labour force participation rate	1,1	1,2	1,2	-0,2	2,6	0,09
KwaZulu Natal						
Population 15-64 yrs						
Labour Force	4,0	1,3	-14	-92	64	0,73
Employed	4,0	5,5	-56	-124	13	0,11
Unemployed	6,6	1,4	42	-16	99	0,16
Not economically active	3,8	5,0	28	-51	105	0,50
Discouraged work-seekers	6,3	1,4	3	-50	55	0,93
Other	3,7	1,5	25	-56	105	0,55
Rates (%)						
Unemployment rate	4,8	5,0	1,5	-0,2	3,2	0,09
Employed / population ratio (Absorption)	1,7	1,4	-0,9	-2,0	0,1	0,08
Labour force participation rate	1,4	1,5	-0,4	-1,5	0,9	0,62

Appendix 2.2A: Sampling variability for labour force characteristics by province (Continued)						
	Jan-Mar 2010 CV	Apr-Jun 2010 CV	Estimate	Lower 95%	Upper 95%	P-value
North West						
Population 15-64 yrs						
Labour Force	3,5	2,5	24	-20	69	0,27
Employed	3,8	8,0	-2	-34	31	0,93
Unemployed	6,5	2,5	26	-11	63	0,17
Not economically active	3,3	4,6	-24	-68	20	0,29
Discouraged work-seekers	8,7	2,8	22	-1	44	0,06
Other	3,2	2,6	-46	-91	1	0,05
Rates (%)						
Unemployment rate	5,1	4,6	1,8	-1,0	4,6	0,20
Employed / population ratio (Absorption)	2,6	2,8	-0,1	-1,6	1,4	0,91
Labour force participation rate	2,3	2,6	1,1	-0,9	3,1	0,28
Gauteng						
Population 15-64 yrs						
Labour Force	2,6	2,7	-18	-113	76	0,70
Employed	2,8	14,8	-13	-99	72	0,76
Unemployed	4,2	2,6	-5	-89	80	0,91
Not economically active	2,9	3,3	27	-68	121	0,58
Discouraged work-seekers	11,9	1,6	6	-56	69	0,83
Other	3,0	1,2	19	-64	104	0,64
Rates (%)						
Unemployment rate	3,0	3,3	0,0	-1,5	1,5	1,00
Employed / population ratio (Absorption)	1,3	1,6	-0,2	-1,4	0,9	0,69
Labour force participation rate	1,0	1,2	-0,4	-1,7	1,0	0,62

Appendix 2.2A: Sampling variability for labour force characteristics by province (Concluded)						
	Jan-Mar 2010 CV	Apr-Jun 2010 CV	Estimate	Lower 95%	Upper 95%	P-value
Mpumalanga						
Population 15-64 yrs						
Labour Force	3,9	2,8	0	-35	36	0,99
Employed	4,1	9,6	15	-17	46	0,36
Unemployed	7,0	2,7	-14	-47	18	0,38
Not economically active	3,9	4,6	4	-31	39	0,82
Discouraged work-seekers	8,6	2,9	15	-11	41	0,25
Other	3,9	2,4	-11	-39	17	0,44
Rates (%)						
Unemployment rate	5,1	4,6	-1,2	-3,5	1,1	0,31
Employed / population ratio (Absorption)	2,7	2,9	0,6	-0,8	2,0	0,41
Labour force participation rate	2,2	2,4	-0,1	-1,7	1,5	0,91
Limpopo						
Population 15-64 yrs						
Labour Force	3,8	2,0	-8	-69	54	0,80
Employed	3,9	7,4	44	-25	112	0,21
Unemployed	6,5	2,1	-51	-85	-17	0,00
Not economically active	3,3	6,6	18	-44	80	0,57
Discouraged work-seekers	7,1	4,7	19	-14	52	0,27
Other	3,3	3,4	-1	-54	52	0,98
Rates (%)						
Unemployment rate	4,7	6,6	-4,2	-7,2	-1,2	0,01
Employed / population ratio (Absorption)	2,9	4,7	1,3	-0,9	3,5	0,24
Labour force participation rate	2,5	3,4	-0,4	-2,3	1,6	0,71

Appendix 3.1A: Sampling variability for the employed by industry and sex						
	Jan-Mar 2010 CV	Apr-Jun 2010 CV	Estimate	Lower 95%	Upper 95%	P-value
Both sexes	3,1	0,7	-61	-206	84	0,41
Agriculture	5,2	4,3	-32	-81	15	0,18
Mining	7,6	9,4	9	-27	46	0,62
Manufacturing	4,1	2,5	-53	-127	21	0,16
Utilities	11,6	11,4	23	7	40	0,01
Construction	4,5	3,5	-15	-81	51	0,66
Trade	3,6	2,0	14	-86	114	0,79
Transport	4,8	4,1	-33	-84	19	0,21
Finance	4,1	2,6	37	-31	105	0,28
Community and social services	3,7	2,1	2	-80	85	0,95
Private households	3,7	3,2	-14	-69	40	0,61
Other						
Women	2,9	1,0	-56	-153	43	0,27
Agriculture	6,4	5,7	-30	-58	-3	0,03
Mining	13,2	13,2	1	-6	7	0,87
Manufacturing	5,1	4,4	0	-42	42	1,00
Utilities	22,0	22,4	6	-2	15	0,13
Construction	10,3	9,6	-11	-32	10	0,32
Trade	3,9	2,6	14	-44	73	0,64
Transport	8,4	8,3	-32	-57	-8	0,01
Finance	4,6	3,6	-7	-51	37	0,75
Community and social services	3,7	2,5	-7	-63	48	0,80
Private households	3,7	3,2	9	-37	56	0,70
Other						
Men	3,3	0,8	-6	-104	93	0,91
Agriculture	5,8	5,2	-2	-37	32	0,90
Mining	7,9	9,9	9	-27	44	0,63
Manufacturing	4,4	2,8	-53	-114	8	0,09
Utilities	13,3	12,4	17	4	31	0,01
Construction	4,6	3,6	-4	-65	57	0,90
Trade	4,2	2,8	-1	-74	73	0,99
Transport	5,2	4,6	0	-46	45	1,00
Finance	4,7	3,7	44	-13	101	0,13
Community and social services	4,5	3,1	9	-47	67	0,74
Private households	7,3	7,2	-24	-54	7	0,13
Other						

Appendix 3.4A: Sampling variability for the employed by province and sector						
	Jan-Mar 2010 CV	Apr-Jun 2010 CV	Estimate	Lower 95%	Upper 95%	P-value
South Africa	3,1	0,7	-61	-206	84	0,41
Formal sector (Non-agricultural)	3,2	1,0	-129	-253	-4	0,04
Informal sector (Non-agricultural)	3,7	2,1	115	25	205	0,01
Agriculture	5,2	4,3	-32	-81	15	0,18
Private households	3,7	3,2	-14	-69	40	0,61
Western Cape	3,7	1,5	-46	-100	9	0,10
Formal sector (Non-agricultural)	4,1	2,2	-23	-69	22	0,31
Informal sector (Non-agricultural)	6,9	6,7	18	-15	51	0,29
Agriculture	10,7	8,1	-25	-56	6	0,12
Private households	8,3	9,9	-15	-32	2	0,09
Eastern Cape	5,4	3,1	0	-55	54	0,99
Formal sector (Non-agricultural)	5,4	4,6	-35	-72	3	0,07
Informal sector (Non-agricultural)	7,5	5,7	35	3	66	0,03
Agriculture	13,4	12,8	-8	-19	3	0,14
Private households	10,2	10,0	7	-15	30	0,52
Northern Cape	5,6	3,6	-10	-29	8	0,28
Formal sector (Non-agricultural)	6,5	4,8	7	-5	19	0,23
Informal sector (Non-agricultural)	15,5	10,7	-2	-9	6	0,63
Agriculture	25,7	10,8	-12	-30	5	0,16
Private households	9,9	11,8	-3	-9	3	0,30
Free State	3,4	1,8	8	-13	28	0,48
Formal sector (Non-agricultural)	5,1	4,0	-2	-21	16	0,80
Informal sector (Non-agricultural)	7,5	8,0	8	-10	25	0,40
Agriculture	9,6	9,6	-1	-9	8	0,91
Private households	7,5	10,2	3	-9	14	0,64
KwaZulu Natal	4,0	1,4	-56	-124	13	0,11
Formal sector (Non-agricultural)	4,5	2,2	-45	-106	15	0,14
Informal sector (Non-agricultural)	6,6	4,5	-1	-42	42	0,99
Agriculture	11,4	12,5	-6	-25	13	0,53
Private households	6,7	7,0	-3	-27	20	0,76

Appendix 3.4A: Sampling variability for the employed by province and sector						
	Jan-Mar 2010 CV	Apr-Jun 2010 CV	Estimate	Lower 95%	Upper 95%	P-value
North West	3,8	2,8	-2	-34	31	0,93
Formal sector (Non-agricultural)	5,0	4,5	-15	-42	13	0,30
Informal sector (Non-agricultural)	7,8	8,7	10	-7	26	0,26
Agriculture	12,4	17,2	1	-7	10	0,73
Private households	9,3	7,5	2	-9	14	0,73
Gauteng	2,8	1,6	-13	-99	72	0,76
Formal sector (Non-agricultural)	3,0	2,0	-43	-123	38	0,30
Informal sector (Non-agricultural)	5,0	5,0	41	-5	87	0,08
Agriculture	30,3	29,6	-1	-9	7	0,78
Private households	6,4	7,2	-11	-40	17	0,42
Mpumalanga	4,1	2,9	15	-17	46	0,36
Formal sector (Non-agricultural)	4,7	3,2	4	-27	35	0,81
Informal sector (Non-agricultural)	6,4	6,1	3	-16	21	0,78
Agriculture	11,4	13,0	9	-3	22	0,14
Private households	9,0	9,5	-1	-17	15	0,91
Limpopo	3,9	4,7	44	-25	112	0,21
Formal sector (Non-agricultural)	4,4	7,3	23	-31	77	0,40
Informal sector (Non-agricultural)	6,2	6,4	3	-34	41	0,86
Agriculture	18,1	13,4	9	-5	24	0,19
Private households	12,0	12,2	8	-8	23	0,33

Appendix 3.5A: Sampling variability for the employed by sex and occupation						
	Jan-Mar 2010 CV	Apr-Jun 2010 CV	Estimate	Lower 95%	Upper 95%	P-value
Both sexes	3,1	0,7	-61	-206	84	0,41
Manager	4,1	3,5	1	-65	66	0,99
Professional	4,9	3,8	56	-1	112	0,05
Technician	4,1	2,7	-80	-151	-10	0,03
Clerk	4,0	2,4	-13	-80	52	0,68
Sales and services	4,2	2,7	25	-53	103	0,53
Skilled agriculture	12,9	10,8	24	3	44	0,03
Craft and related trade	3,9	2,6	-41	-121	40	0,32
Plant and machine operator	4,9	3,7	-8	-69	53	0,80
Elementary	3,6	2,1	-37	-136	61	0,45
Domestic worker	3,7	3,1	15	-32	61	0,53
Other						
Women	2,9	1,0	-56	-153	43	0,27
Manager	6,3	5,5	-11	-41	19	0,48
Professional	5,5	5,0	13	-23	48	0,50
Technician	4,4	3,6	-16	-64	31	0,50
Clerk	4,2	2,9	-23	-77	31	0,40
Sales and services	4,4	3,1	-15	-64	33	0,53
Skilled agriculture	21,1	16,1	17	7	27	0,00
Craft and related trade	7,0	6,4	-28	-55	-2	0,03
Plant and machine operator	9,9	8,9	3	-15	22	0,72
Elementary	4,0	2,9	0	-65	64	1,00
Domestic worker	3,7	3,2	6	-39	52	0,78
Other						
Men	3,3	0,8	-6	-104	93	0,91
Manager	4,6	4,3	11	-45	67	0,69
Professional	6,6	5,1	43	1	85	0,04
Technician	5,1	4,3	-64	-114	-13	0,01
Clerk	5,7	4,8	10	-29	47	0,64
Sales and services	4,7	3,5	41	-18	98	0,17
Skilled agriculture	13,4	11,9	7	-10	23	0,43
Craft and related trade	4,1	2,6	-12	-86	61	0,74
Plant and machine operator	5,0	3,7	-11	-69	46	0,70
Elementary	4,1	3,0	-37	-117	42	0,36
Domestic worker	17,3	13,3	9	-4	20	0,17
Other						

Appendix 2B: Sampling variability for labour force characteristics by sex						
	Jan-Mar 2010 CV	Apr-Jun 2010 CV	Estimate	Lower 95%	Upper 95%	P-value
Both sexes						
Population 15-64 yrs						
Labour Force	0,5	0,5	-441	-684	-198	0,00
Employed	0,6	0,7	-627	-849	-407	0,00
Formal sector (Non-agricultural)	0,8	1,0	-511	-712	-310	0,00
Informal sector (Non-agricultural)	2,1	2,1	15	-101	130	0,80
Agriculture	5,1	4,3	-92	-169	-16	0,02
Private households	3,1	3,2	-39	-128	50	0,39
Unemployed	2,0	1,8	187	-8	382	0,06
Not economically active	0,7	0,6	761	517	1004	0,00
Discouraged work-seekers	3,3	3,2	390	253	527	0,00
Other(not economically active)	0,7	0,7	370	157	584	0,00
Rates (%)						
Unemployment rate	1,7	1,6	1,7	0,7	2,7	0,00
Employed / population ratio (Absorption)	0,6	0,7	-2,4	-3,2	-1,7	0,00
Labour force participation rate	0,5	0,5	-2,0	-2,8	-1,2	0,00
Women						
Population 15-64 yrs						
Labour Force	0,8	0,8	-237	-413	-63	0,01
Employed	0,8	1,0	-326	-473	-177	0,00
Formal sector (Non-agricultural)	1,3	1,4	-250	-382	-117	0,00
Informal sector (Non-agricultural)	2,9	3,0	-32	-105	41	0,39
Agriculture	6,7	5,7	-3	-40	34	0,89
Private households	3,2	3,2	-41	-118	36	0,30
Unemployed	2,7	2,3	87	-49	223	0,21
Not economically active	0,7	0,7	380	204	556	0,00
Discouraged work-seekers	3,5	3,8	190	104	275	0,00
Other(not economically active)	0,8	0,8	191	29	352	0,02
Rates (%)						
Unemployment rate	2,3	2,0	1,9	0,4	3,4	0,01
Employed / population ratio (Absorption)	0,8	1,0	-2,4	-3,2	-1,4	0,00
Labour force participation rate	0,7	0,8	-1,9	-3,0	-0,8	0,00

Appendix 2B: Sampling variability for labour force characteristics by sex (Concluded)						
	Jan-Mar 2010 CV	Apr-Jun 2010 CV	Estimate	Lower 95%	Upper 95%	P-value
Men						
Population 15-64 yrs						
Labour Force	0,6	0,6	-203	-339	-67	0,00
Employed	0,7	0,8	-303	-447	-158	0,00
Formal sector (Non-agricultural)	1,0	1,1	-261	-397	-125	0,00
Informal sector (Non-agricultural)	2,7	2,8	46	-38	131	0,28
Agriculture	5,5	5,2	-90	-145	-35	0,00
Private households	6,1	7,2	1	-40	42	0,95
Unemployed	2,2	2,1	100	-12	211	0,08
Not economically active	1,0	0,9	380	245	516	0,00
Discouraged work-seekers	4,4	3,9	200	121	279	0,00
Other(not economically active)	1,0	0,9	180	64	297	0,00
Rates (%)						
Unemployment rate	2,0	2,0	1,5	0,4	2,7	0,01
Employed / population ratio (Absorption)	0,7	0,8	-2,6	-3,6	-1,6	0,00
Labour force participation rate	0,5	0,6	-2,1	-3,0	-1,2	0,00

Appendix 2.1B: Sampling variability for labour force characteristics by population group						
	Jan-Mar 2010 CV	Apr-Jun 2010 CV	Estimate	Lower 95%	Upper 95%	P-value
South Africa						
Population 15-64 yrs						
Labour Force	0,5	0,5	-441	-684	-198	0,00
Employed	0,6	0,7	-627	-849	-407	0,00
Unemployed	2,0	1,8	187	-8	382	0,06
Not economically active	0,7	0,6	761	517	1004	0,00
Rates (%)						
Unemployment rate	1,7	1,6	1,7	0,7	2,7	0,00
Employed / population ratio (Absorption)	0,6	0,7	-2,4	-3,2	-1,7	0,00
Labour force participation rate	0,5	0,5	-2,0	-2,8	-1,2	0,00
Black/African						
Population 15-64 yrs						
Labour Force	0,7	0,7	-394	-607	-182	0,00
Employed	0,8	0,9	-495	-683	-306	0,00
Unemployed	2,2	2,0	100	-85	285	0,29
Not economically active	0,8	0,7	692	475	910	0,00
Rates (%)						
Unemployment rate	1,8	1,8	1,6	0,4	2,9	0,01
Employed / population ratio (Absorption)	0,8	0,9	-2,5	-3,3	-1,7	0,00
Labour force participation rate	0,7	0,7	-2,3	-3,1	-1,4	0,00
Coloured						
Population 15-64 yrs						
Labour Force	1,2	1,1	-6	-73	62	0,87
Employed	1,7	1,7	-63	-135	10	0,09
Unemployed	4,6	4,5	57	11	103	0,02
Not economically active	2,0	2,1	42	-21	105	0,19
Rates (%)						
Unemployment rate	4,6	4,4	3,0	0,7	5,3	0,01
Employed / population ratio (Absorption)	1,6	1,7	-2,7	-5,0	-0,4	0,02
Labour force participation rate	1,0	1,1	-0,9	-3,1	1,1	0,36

Appendix 2.1B: Sampling variability for labour force characteristics by population group (Concluded)						
	Jan-Mar 2010 CV	Apr-Jun 2010 CV	Estimate	Lower 95%	Upper 95%	P-value
Indian/Asian						
Population 15-64 yrs						
Labour Force	2,7	2,1	25	-1	53	0,06
Employed	2,9	2,0	30	2	58	0,03
Unemployed	9,6	14,6	-4	-23	15	0,67
Not economically active	3,4	3,1	-11	-36	13	0,36
Rates (%)						
Unemployment rate	9,1	13,7	-1,2	-4,7	2,1	0,46
Employed / population ratio (Absorption)	2,4	2,0	2,6	0,0	5,0	0,05
Labour force participation rate	2,2	2,1	1,9	-0,6	4,4	0,13
White						
Population 15-64 yrs						
Labour Force	1,1	1,4	-67	-136	3	0,06
Employed	1,1	1,3	-101	-167	-35	0,00
Unemployed	9,8	9,4	34	5	63	0,02
Not economically active	2,3	3,0	38	-30	106	0,28
Rates (%)						
Unemployment rate	9,7	8,9	1,8	0,5	3,1	0,01
Employed / population ratio (Absorption)	1,0	1,3	-2,7	-4,8	-0,6	0,01
Labour force participation rate	0,9	1,4	-1,5	-3,7	0,7	0,17

Appendix 2.2B: Sampling variability for labour force characteristics by province						
	Jan-Mar 2010 CV	Apr-Jun 2010 CV	Estimate	Lower 95%	Upper 95%	P-value
South Africa						
Population 15-64 yrs						
Labour Force	0,5	0,5	-441	-684	-198	0,00
Employed	0,6	0,7	-627	-849	-407	0,00
Unemployed	2,0	1,8	187	-8	382	0,06
Not economically active	0,7	0,6	761	517	1004	0,00
Discouraged work-seekers	3,3	3,2	390	253	527	0,00
Other	0,7	0,7	370	157	584	0,00
Rates (%)						
Unemployment rate	1,7	1,6	1,7	0,7	2,7	0,00
Employed / population ratio (Absorption)	0,6	0,7	-2,4	-3,2	-1,7	0,00
Labour force participation rate	0,5	0,5	-2,0	-2,8	-1,2	0,00
Western Cape						
Population 15-64 yrs						
Labour Force	1,1	1,1	3	-71	78	0,93
Employed	1,4	1,5	-29	-109	52	0,49
Unemployed	3,9	4,3	32	-29	92	0,31
Not economically active	2,4	2,3	34	-40	109	0,36
Discouraged work-seekers	29,0	14,7	25	3	46	0,02
Other	2,3	2,3	10	-64	83	0,79
Rates (%)						
Unemployment rate	3,7	4,1	1,3	-1,1	3,7	0,29
Employed / population ratio (Absorption)	1,4	1,5	-1,4	-3,7	0,9	0,23
Labour force participation rate	1,1	1,1	-0,6	-2,8	1,5	0,55

Appendix 2.2B: Sampling variability for labour force characteristics by province (Continued)						
	Jan-Mar 2010 CV	Apr-Jun 2010 CV	Estimate	Lower 95%	Upper 95%	P-value
Eastern Cape						
Population 15-64 yrs						
Labour Force	3,4	2,2	-157	-279	-37	0,01
Employed	2,7	3,1	-110	-202	-19	0,02
Unemployed	8,9	5,3	-47	-127	32	0,24
Not economically active	2,9	1,7	200	82	318	0,00
Discouraged work-seekers	8,7	6,1	74	5	142	0,04
Other	2,9	1,9	126	28	225	0,01
Rates (%)						
Unemployment rate	6,3	5,0	-0,2	-3,6	3,2	0,91
Employed / population ratio (Absorption)	2,6	3,1	-3,0	-5,3	-0,9	0,01
Labour force participation rate	3,3	2,2	-4,3	-7,3	-1,5	0,00
Northern Cape						
Population 15-64 yrs						
Labour Force	4,5	2,5	-17	-52	19	0,36
Employed	5,5	3,6	-25	-63	11	0,18
Unemployed	10,3	5,9	9	-8	26	0,31
Not economically active	5,3	2,7	20	-16	55	0,28
Discouraged work-seekers	26,4	13,8	5	-10	20	0,49
Other	4,5	3,0	15	-14	43	0,32
Rates (%)						
Unemployment rate	9,2	5,6	3,6	-1,2	8,5	0,14
Employed / population ratio (Absorption)	5,5	3,6	-3,7	-9,0	1,4	0,16
Labour force participation rate	4,5	2,5	-2,5	-7,6	2,5	0,32

Appendix 2.2B: Sampling variability for labour force characteristics by province (Continued)						
	Jan-Mar 2010 CV	Apr-Jun 2010 CV	Estimate	Lower 95%	Upper 95%	P-value
Free State						
Population 15-64 yrs						
Labour Force	1,9	1,2	19	-25	64	0,39
Employed	2,3	1,8	3	-37	42	0,90
Unemployed	4,4	4,0	17	-18	52	0,35
Not economically active	2,5	1,6	-12	-55	31	0,58
Discouraged work-seekers	11,2	9,4	-8	-27	11	0,40
Other	2,2	2,1	-4	-43	34	0,83
Rates (%)						
Unemployment rate	3,9	3,7	1,1	-1,8	4,0	0,46
Employed / population ratio (Absorption)	2,3	1,8	0,1	-2,1	2,1	0,98
Labour force participation rate	1,8	1,2	0,9	-1,5	3,1	0,48
KwaZulu Natal						
Population 15-64 yrs						
Labour Force	1,7	1,5	-59	-193	75	0,39
Employed	1,8	1,4	-95	-199	10	0,08
Unemployed	4,3	5,9	36	-44	115	0,38
Not economically active	1,5	1,3	137	4	269	0,04
Discouraged work-seekers	5,3	5,5	39	-25	103	0,23
Other	1,6	1,4	98	-20	216	0,10
Rates (%)						
Unemployment rate	3,8	5,0	1,5	-0,6	3,8	0,16
Employed / population ratio (Absorption)	1,8	1,4	-1,9	-3,6	-0,3	0,02
Labour force participation rate	1,7	1,5	-1,5	-3,6	0,6	0,16

Appendix 2.2B: Sampling variability for labour force characteristics by province (Continued)						
	Jan-Mar 2010 CV	Apr-Jun 2010 CV	Estimate	Lower 95%	Upper 95%	P-value
North West						
Population 15-64 yrs						
Labour Force	3,1	2,6	-96	-155	-36	0,00
Employed	3,7	2,8	-74	-126	-22	0,01
Unemployed	6,2	5,7	-22	-62	20	0,31
Not economically active	3,5	2,5	107	49	165	0,00
Discouraged work-seekers	11,5	8,0	46	24	69	0,00
Other	3,5	2,5	61	6	116	0,03
Rates (%)						
Unemployment rate	5,4	4,6	0,4	-2,6	3,6	0,76
Employed / population ratio (Absorption)	3,5	2,8	-3,6	-5,9	-1,3	0,00
Labour force participation rate	2,9	2,6	-4,7	-7,2	-2,1	0,00
Gauteng						
Population 15-64 yrs						
Labour Force	1,1	1,2	-78	-244	87	0,35
Employed	1,3	1,6	-263	-419	-108	0,00
Unemployed	4,1	3,7	185	59	310	0,00
Not economically active	2,5	2,7	139	-17	295	0,08
Discouraged work-seekers	13,1	14,8	82	11	154	0,02
Other	2,5	2,6	56	-84	198	0,43
Rates (%)						
Unemployment rate	3,7	3,3	4,0	1,8	6,2	0,00
Employed / population ratio (Absorption)	1,2	1,6	-4,1	-6,2	-2,0	0,00
Labour force participation rate	1,0	1,2	-1,7	-3,9	0,5	0,13

Appendix 2.2B: Sampling variability for labour force characteristics by province (Concluded)						
	Jan-Mar 2010 CV	Apr-Jun 2010 CV	Estimate	Lower 95%	Upper 95%	P-value
Mpumalanga						
Population 15-64 yrs						
Labour Force	2,3	2,4	-16	-81	48	0,62
Employed	3,0	2,9	-30	-94	33	0,34
Unemployed	5,1	5,4	15	-34	62	0,56
Not economically active	2,7	2,8	43	-21	107	0,19
Discouraged work-seekers	8,8	9,6	69	34	105	0,00
Other	2,6	2,7	-26	-87	34	0,39
Rates (%)						
Unemployment rate	4,9	4,6	1,6	-2,1	5,2	0,40
Employed / population ratio (Absorption)	3,0	2,9	-1,8	-4,7	1,0	0,20
Labour force participation rate	2,2	2,4	-1,3	-4,3	1,5	0,34
Limpopo						
Population 15-64 yrs						
Labour Force	2,5	3,4	-40	-117	37	0,31
Employed	2,6	4,7	-3	-86	79	0,93
Unemployed	9,0	5,7	-36	-86	13	0,15
Not economically active	1,6	2,0	93	12	174	0,02
Discouraged work-seekers	7,6	7,4	58	18	98	0,01
Other	1,9	2,1	36	-42	113	0,37
Rates (%)						
Unemployment rate	7,5	6,6	-2,3	-6,3	1,8	0,27
Employed / population ratio (Absorption)	2,5	4,7	-0,6	-3,2	2,0	0,65
Labour force participation rate	2,4	3,4	-1,9	-4,3	0,5	0,12

Appendix 3.1B: Sampling variability for the employed by industry and sex						
	Jan-Mar 2010 CV	Apr-Jun 2010 CV	Estimate	Lower 95%	Upper 95%	P-value
Both sexes	0,6	0,7	-627	-849	-407	0,00
Agriculture	5,1	4,3	-92	-169	-16	0,02
Mining	7,5	9,4	-14	-65	39	0,61
Manufacturing	2,7	2,5	-217	-333	-102	0,00
Utilities	18,7	11,4	0	-38	39	0,98
Construction	3,0	3,5	-111	-206	-14	0,03
Trade	1,8	2,0	-123	-259	13	0,08
Transport	3,8	4,1	7	-66	80	0,85
Finance	2,4	2,6	-40	-154	74	0,49
Community and social services	1,7	2,1	-5	-135	126	0,95
Private households	3,1	3,2	-39	-128	50	0,39
Other						
Women	0,8	1,0	-326	-473	-177	0,00
Agriculture	6,7	5,7	-3	-40	34	0,89
Mining	14,4	13,2	-6	-21	8	0,41
Manufacturing	4,1	4,4	-58	-121	5	0,07
Utilities	21,4	22,4	-6	-19	8	0,42
Construction	7,6	9,6	-15	-41	12	0,29
Trade	2,2	2,6	-63	-146	20	0,14
Transport	7,4	8,3	-10	-44	24	0,56
Finance	3,4	3,6	-103	-167	-38	0,00
Community and social services	2,1	2,5	-27	-124	70	0,58
Private households	3,2	3,2	-41	-118	36	0,30
Other						
Men	0,7	0,8	-303	-447	-158	0,00
Agriculture	5,5	5,2	-90	-145	-35	0,00
Mining	8,0	9,9	-7	-54	40	0,76
Manufacturing	3,2	2,8	-160	-252	-67	0,00
Utilities	21,1	12,4	6	-27	38	0,73
Construction	3,2	3,6	-96	-185	-6	0,04
Trade	2,4	2,8	-60	-156	37	0,23
Transport	4,1	4,6	17	-47	82	0,60
Finance	3,6	3,7	63	-32	158	0,19
Community and social services	2,7	3,1	23	-56	102	0,57
Private households	6,1	7,2	1	-40	42	0,95
Other						

Appendix 3.4B: Sampling variability for the employed by province and sector						
	Jan-Mar 2010 CV	Apr-Jun 2010 CV	Estimate	Lower 95%	Upper 95%	P-value
South Africa	0,6	0,7	-627	-849	-407	0,00
Formal sector (Non-agricultural)	0,8	1,0	-511	-712	-310	0,00
Informal sector (Non-agricultural)	2,1	2,1	15	-101	130	0,80
Agriculture	5,1	4,3	-92	-169	-16	0,02
Private households	3,1	3,2	-39	-128	50	0,39
Western Cape	1,4	1,5	-29	-109	52	0,49
Formal sector (Non-agricultural)	1,9	2,2	-36	-97	26	0,26
Informal sector (Non-agricultural)	8,2	6,7	20	-18	58	0,30
Agriculture	12,0	8,1	6	-28	40	0,72
Private households	8,7	9,9	-20	-48	9	0,18
Eastern Cape	2,7	3,1	-110	-202	-19	0,02
Formal sector (Non-agricultural)	3,6	4,6	-86	-170	-2	0,05
Informal sector (Non-agricultural)	5,3	5,7	0	-41	40	0,98
Agriculture	18,3	12,8	-33	-66	0	0,05
Private households	10,5	10,0	9	-26	44	0,61
Northern Cape	5,5	3,6	-25	-63	11	0,18
Formal sector (Non-agricultural)	3,4	4,8	3	-16	22	0,76
Informal sector (Non-agricultural)	12,2	10,7	-2	-9	4	0,52
Agriculture	30,3	10,8	-25	-61	10	0,16
Private households	8,4	11,8	-1	-8	6	0,77
Free State	2,3	1,8	3	-37	42	0,90
Formal sector (Non-agricultural)	4,1	4,0	15	-30	60	0,52
Informal sector (Non-agricultural)	6,4	8,0	-6	-27	14	0,53
Agriculture	11,2	9,6	-13	-32	7	0,21
Private households	8,1	10,2	7	-13	26	0,50
KwaZulu Natal	1,8	1,4	-95	-199	10	0,08
Formal sector (Non-agricultural)	2,3	2,2	-35	-115	44	0,39
Informal sector (Non-agricultural)	4,6	4,5	-40	-99	20	0,19
Agriculture	10,2	12,5	6	-23	35	0,69
Private households	7,2	7,0	-25	-78	26	0,33

Appendix 3.4B: Sampling variability for the employed by province and sector						
	Jan-Mar 2010 CV	Apr-Jun 2010 CV	Estimate	Lower 95%	Upper 95%	P-value
North West	3,7	2,8	-74	-126	-22	0,01
Formal sector (Non-agricultural)	4,2	4,5	-66	-111	-21	0,00
Informal sector (Non-agricultural)	7,2	8,7	-2	-26	20	0,82
Agriculture	23,4	17,2	-3	-15	10	0,70
Private households	10,2	7,5	-3	-22	16	0,75
Gauteng	1,3	1,6	-263	-419	-108	0,00
Formal sector (Non-agricultural)	1,7	2,0	-262	-422	-102	0,00
Informal sector (Non-agricultural)	5,4	5,0	35	-24	93	0,24
Agriculture	13,1	29,6	-12	-30	6	0,20
Private households	6,7	7,2	-24	-62	13	0,20
Mpumalanga	3,0	2,9	-30	-94	33	0,34
Formal sector (Non-agricultural)	4,8	3,2	-13	-68	41	0,63
Informal sector (Non-agricultural)	6,8	6,1	-12	-41	17	0,42
Agriculture	11,5	13,0	-5	-24	14	0,63
Private households	8,3	9,5	-1	-24	24	0,98
Limpopo	2,6	4,7	-3	-86	79	0,93
Formal sector (Non-agricultural)	5,4	7,3	-30	-96	35	0,36
Informal sector (Non-agricultural)	4,9	6,4	22	-18	64	0,27
Agriculture	11,3	13,4	-15	-33	4	0,13
Private households	11,9	12,2	19	-1	39	0,06

Appendix 3.5B: Sampling variability for the employed by sex and occupation						
	Jan-Mar 2010 CV	Apr-Jun 2010 CV	Estimate	Lower 95%	Upper 95%	P-value
Both sexes	0,6	0,7	-627	-849	-407	0,00
Manager	2,9	3,5	-44	-136	48	0,35
Professional	3,4	3,8	81	20	141	0,01
Technician	2,6	2,7	-142	-245	-39	0,01
Clerk	2,6	2,4	-10	-106	86	0,84
Sales and services	2,3	2,7	29	-95	154	0,64
Skilled agriculture	9,8	10,8	29	2	56	0,04
Craft and related trade	2,3	2,6	-244	-347	-141	0,00
Plant and machine operator	2,9	3,7	-146	-241	-51	0,00
Elementary	1,9	2,1	-120	-265	25	0,10
Domestic worker	3,3	3,1	-60	-138	17	0,13
Other						
Women	0,8	1,0	-326	-473	-177	0,00
Manager	5,1	5,5	-53	-98	-8	0,02
Professional	4,8	5,0	34	-5	72	0,09
Technician	2,7	3,6	-23	-94	48	0,53
Clerk	3,0	2,9	-35	-112	42	0,37
Sales and services	2,9	3,1	-58	-130	13	0,11
Skilled agriculture	19,8	16,1	19	7	32	0,00
Craft and related trade	5,7	6,4	-65	-99	-31	0,00
Plant and machine operator	7,0	8,9	-33	-68	2	0,06
Elementary	2,4	2,9	-47	-129	34	0,25
Domestic worker	3,4	3,2	-64	-141	13	0,10
Other						
Men	0,7	0,8	-303	-447	-158	0,00
Manager	3,4	4,3	8	-70	88	0,83
Professional	4,9	5,1	47	-6	100	0,08
Technician	3,9	4,3	-120	-191	-48	0,00
Clerk	4,6	4,8	25	-33	83	0,40
Sales and services	3,1	3,5	88	2	174	0,04
Skilled agriculture	10,8	11,9	9	-13	31	0,41
Craft and related trade	2,5	2,6	-179	-273	-85	0,00
Plant and machine operator	3,2	3,7	-113	-204	-22	0,02
Elementary	2,5	3,0	-73	-190	44	0,22
Domestic worker	14,8	13,3	4	-9	15	0,59
Other						